



A
C
J
O
N
E
S

T
R
O
A
N

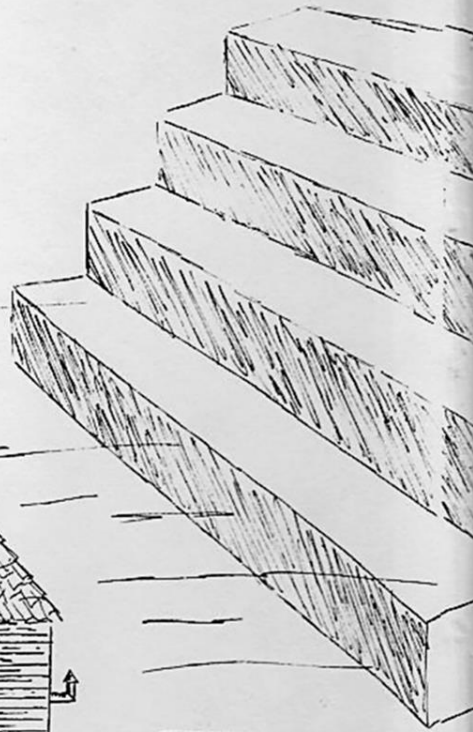
1958-59

Dear Miss D.
I really enjoyed
English II with you. I will
never forget Julius Caesar & Silas
Narrower the Trojan Staff. I am
looking forward to the coming years
of working with the staff also.
Kathy Myrick

To the greatest
Soph. English teacher
I've ever had.

Bob

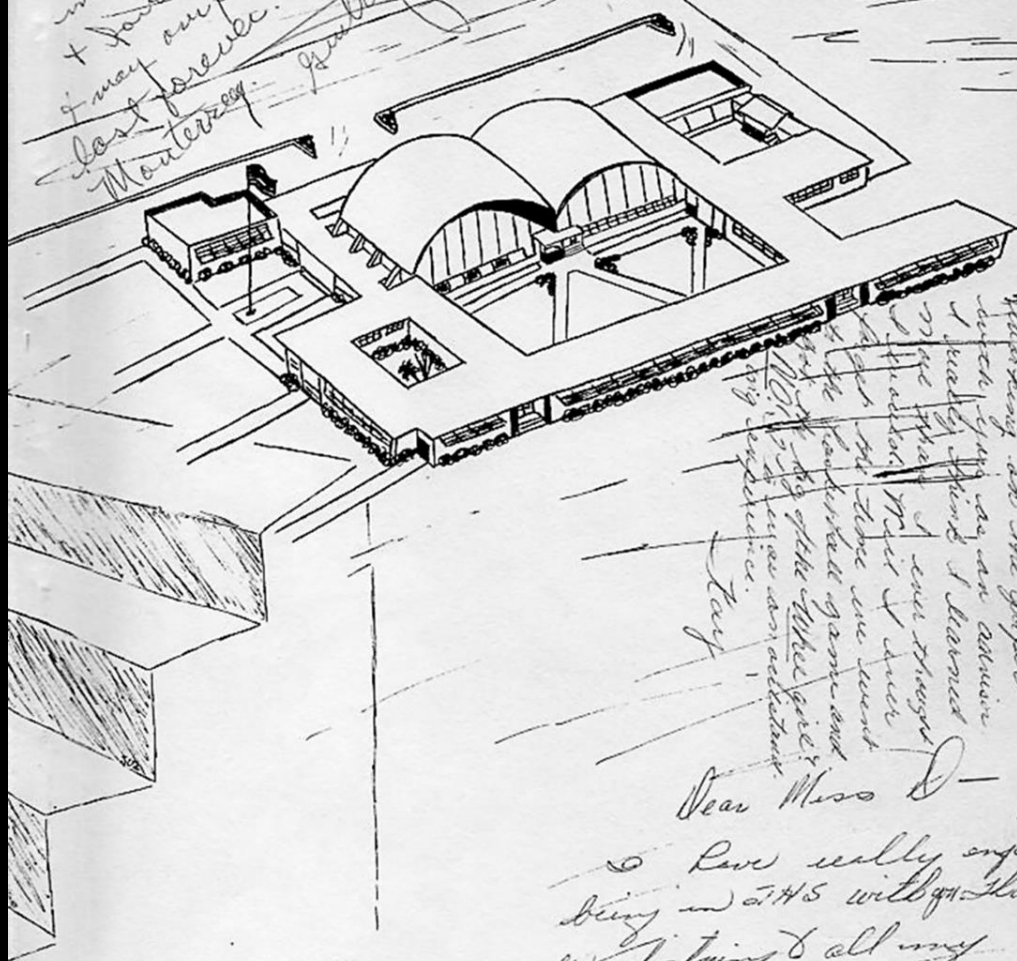
PROPERTY OF
A.C. JONES HIGH SCHOOL LIBRARY
REEVILLE, TEXAS



502

I just loved every
moment of your
+ your with you
+ may our friendships
last forever. Remember
Monterey. *Yours truly*

Jean Dugat



Dear Miss D.
I really have enjoyed
working on the paper
with you as an advisor
& really think I learned
more than I can say
of you. Miss I will
get the same one soon
to the point that you will
not be of the other side
of the paper. I will
try to see you soon.
Love
Jean

Dear Miss D -

I have really enjoyed
being in AHS with you. Thanks
for listening to all my
words & for helping me
pass Eng. II. Best of luck
to you & the JPM staff next
year. I just wish we could
be there. Maybe we'd be educated
enough not to fall to many
bloopers. — Many thanks

PROPERTY OF
A.C. JONES HIGH SCHOOL LIBRARY
BEEVILLE, TEXAS

I've
said it
a head in
your
THOSAN
Barton

Dear Miss Dugan -
I ~~just~~ just loved your
English class this past
year! Really, I did!
I sure hope that
I can be on the pa-
per next year.

Love
Gladie

Miss D.
We really had
a good time this year on
the Japan but I could
work to much on it. I'm sorry
about that.

Born

Dear Miss Dugan,
To a real wonderful
person who has been
real swell to all us
Japomores.

Love,
Janie Herbst



Introducing
Your
1958-59
Yearbook

THE
TROJAN

PROPERTY OF
A. C. JONES HIGH SCHOOL LIBRARY
BEEVILLE, TEXAS

A. C. Jones High
Beeville, Texas



THE ANNUAL STAFF

GRADY O'SHIELDS, Editor-in-Chief

SUSAN DOUGHERTY	-Associate Editor	JUDY LAWSON	Senior Representative
LINDA ROACH -	Layout Editor	BEA BITTNER	-Senior Representative
JOE TRLICA -	Sports Editor	LOIS SANDERS	Junior Representative
SUZ McKINNEY	-Artist	BEVERLY SHEPARDSON	Sophomore Representative
EDDIE WICKER	Business Manager	STANLEY ANN ANDERSON	-Sophomore Representative
MARTHA BOWES	Associate Business Manager	JAYNE LUNDSCHEN -	Sophomore Representative
CONWAY YOUNT	-- Photographer	JOHN WEST	-Sophomore Representative
FRANK JACKSON -	Photographer	LYNN BAUCH -	Freshman Representative
AUBREY MARTIN - -	Photographer	MARY CHESSIR	Freshman Representative
EVANGLINA BALDILLEZ	Senior Representative	MARGARET PETER	Freshman Representative

MRS. A. M. COALSON, Advisor

As the school year 1958-1959 moves on and progress is made, recorded, and then forgotten, thoughts of high school days also fade away and other interests take their places. But if somewhere, sometime, this book is taken from the shelf and the dust is carefully wiped away; if, as the pages are turned, memories of past years are refreshed, old friendships are remembered, and a smile brightens the reader's face, we, the staff, will have achieved our purpose.

Grady O'Shields

Editor-in-Chief

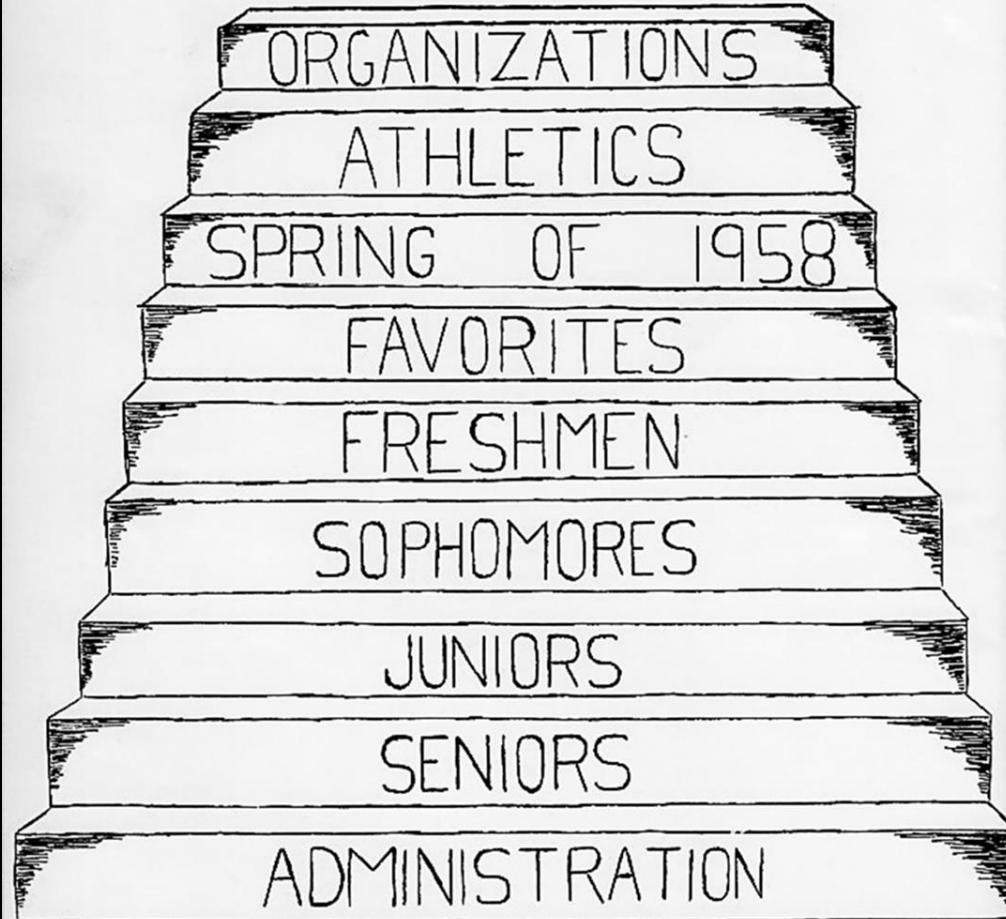
PROPERTY OF
A. C. JONES HIGH SCHOOL LIBRARY
BEEVILLE, TEXAS

DEDICATION



The yearbook staff proudly dedicates the 1958-59 TROJAN to Mr. Adam Berger, who has served A. C. Jones longer than any other employee. He has faithfully and generously devoted his time and efforts to developing and maintaining our campus. By this dedication we are saying thank you for all the things that you have done to make JHS just a little more enjoyable.

CONTENTS



S
U
P
E
R
I
N
T
E
N
D
E
N
T
,

M
E
S
S
A
G
E



Education is no longer considered a luxury. In the events of the last generation it has become a necessity that is within the reach of every boy and girl who has a real ambition to obtain it. Your high school days are days of decision as well as days of fun and enjoyment. English, math, science, shop, homemaking, etc., are your stepping stones to the future. Let me encourage you anew to take every advantage of the opportunities offered you by A. C. Jones High School. Your Principal, Counselor, and teaching staff have only one purpose to be of service to your educational ambitions. I have detected a note of seriousness and determination in the student body this year that is most reassuring to our attempt to constantly improve the school program. Your continued cooperation with the faculty, community, and other related educational groups will build an even greater A. C. Jones.

Archie A. Roberts

Superintendent



PRINCIPAL'S MESSAGE

Pleasant memories, unlike many other priceless treasures, cannot be taken from us. We can keep pleasant memories with us for the rest of our lives. This beautiful 1959 Trojan Annual will recall pleasant memories of the 1958-59 school year for many, many years. The sponsor, the editor, and the staff members who worked so hard to produce this pictorial record of this school year are to be commended for a job well done. The sentimental value of this annual and our appreciation for those who made it possible will grow as the years go by.

This has been a wonderful school year in all fields of endeavor, and I express my personal appreciation to those who have made it so the students and the faculty of A. C. Jones High School.

Lester W. McCoy

Principal

C
O
U
N
S
E
L
O
R
'
S

M
E
S
S
A
G
E



I congratulate the Annual Staff and all those who had a part in the preparation of this vivid record of life at A. C. Jones High School.

This has been a wonderful year. To some it has brought fame and thrills...to others obscurity and disappointment. But to all it has been another full year of unfolding life. I cherish the sincere hope that the total result of this year together has been to give to each of you some added bit of knowledge, understanding, skill, and purpose that will lead you into greater happiness and usefulness in the way you choose to direct your life.

To you Seniors I wish the very best of all that is good. Be good stewards of your heritage. You are taking with you a part of us, and we follow you with sensitive interest as you begin the path of your future.

George A. Elam Jr.

Guidance Counselor

SCHOOL BOARD



DAN CONOLY



BOB ATKINS



ALFREDO MORENO



ROCKY REAGAN
President

JAMES RIGGLE



BILL CUDE

SID MALONE

WOODROW HAM



OUR BUILDING



The 8:30 obstacle course as seen through the eyes of a student arriving late.



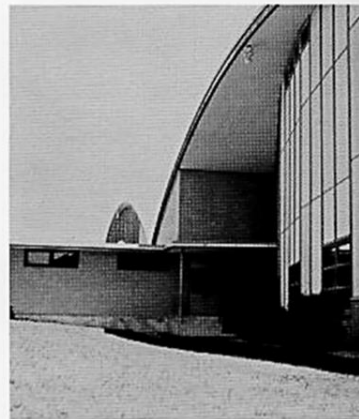
The entry to the tax office.



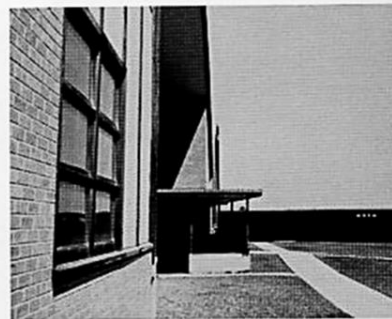
Our parking area and the catwalk on the north end of the school.



A view of our school from across the campus.



The stage door to the auditorium.



The south side of the auditorium as seen from the quadrangle.



MRS. DOROTHY BOWES
Plane Geometry
Algebra I
General Math I and II
Sponsor;
Sophomore Class



LARRY A. PAYNE
English I and II
Sponsor;
Sophomore Class



ALLEN C. DONAHO
Spanish
English II
Sponsor;
Senior Class

VERNON ULLMANN
Physical Education
World Geography
World History



MRS. RUTH A. GILL
Homemaking
Sponsor;
Freshman Class





JOE BATCHELOR
Government
History
Sponsor:
Freshman Class

MISS JEAN DUGAT
English II
Journalism
Sponsor:
Freshman Class
Trojan Newspaper



J. M. PERRYMAN
General Mathematics
Algebra
Sponsor:
Senior Class

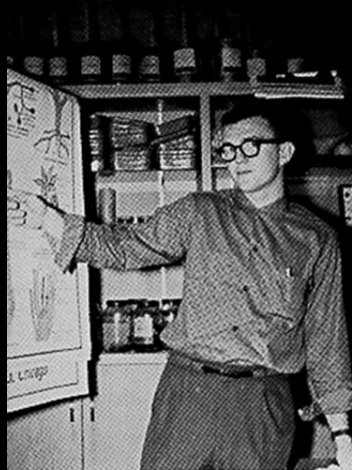


MRS. KENNETH HARRELL
English I and II
Sponsor:
Freshman Class



CHARLES NORTON
Typing
Sponsor:
Freshman Class





J. THOMAS MAY
General Science
Biology
World Geography
World History
Sponsor:
Freshman Class

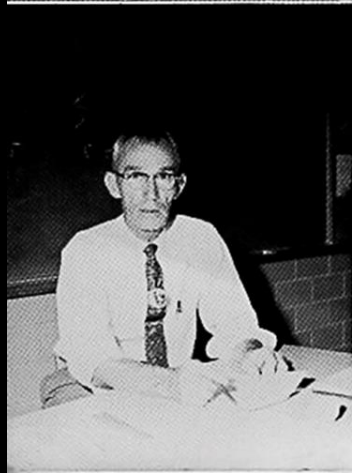


MRS. SUE NEWMAN
Speech
Sponsor:
National Thespians



MRS. IOLA OLSEN
Latin
Bookkeeping
Typing
Sponsor:
Sophomore Class
Latin Club

KENNETH FAUBION
General Science
Sponsor:
Sophomore Class



CECIL ALLEN
Plane Geometry
Biology
Sponsor:
Freshman Class





DORIS KUHNERT
Principal's Secretary

U. R. PFENNINGER
Driving Education
Sponsor:
Sophomore Class



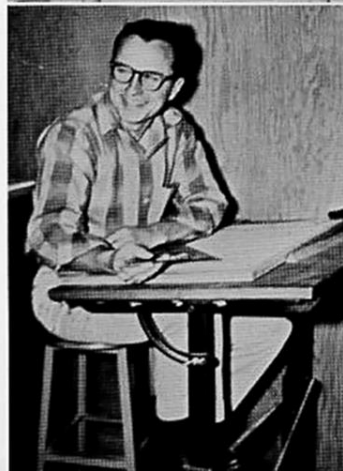
DON SCOTT
Biology
Coach



JOY COALSON
Secretarial Subjects
Sponsor:
Trojan Annual
Secretarial Arts
Senior Class



JOHN HENSALL
Shop I and II
Mechanical Drawing
Sponsor:
Industrial Arts
Sophomore Class





JIM GALLAGHER
American History
Sponsor:
Junior Class



MRS. CHRISTINE MUENNINK
Homemaking I and III
Sponsor:
Junior Class
FHA



MISS MARJORIE MILLER
English III and IV
Sponsor:
Senior Class
FTA

MRS. INA B. WEST
Librarian
Sponsor:
Library Club



A. R. HATCHER
Vocational Agriculture
Sponsor:
FFA



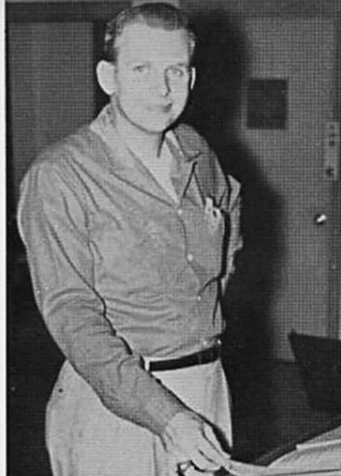


WOODROW HAM
Business Manager

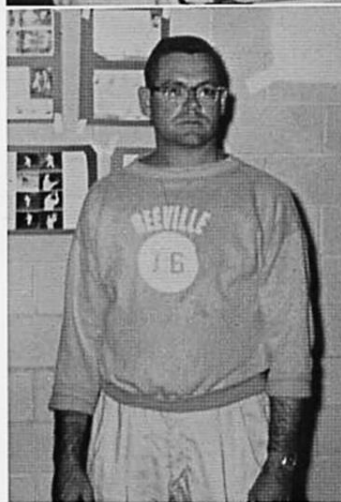
MRS. W. L. WEST
Cafeteria Manager



JACK FELTS
Band and Choral



DAVE GREEN
Assistant Coach
Boys' Physical Education
Sponsor:
Junior Class



HAL KIRKPATRICK
Distributive Education
Sponsor:
Distributive Education Club





MRS. YVONNE CURBO
Girls' Physical Education
Sponsor:
Junior Class



J. T. HUDMAN
Algebra I and II
Trigonometry
Solid Geometry
Sponsor:
Sophomore Class

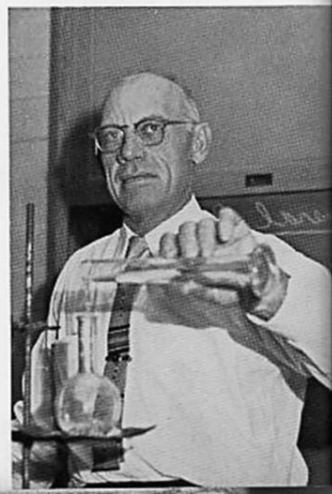


TEX KASEN
Algebra I
Coaching
Physical Education

JOE HILL
Physics
Chemistry
Sponsor:
Freshman Class
Science Club



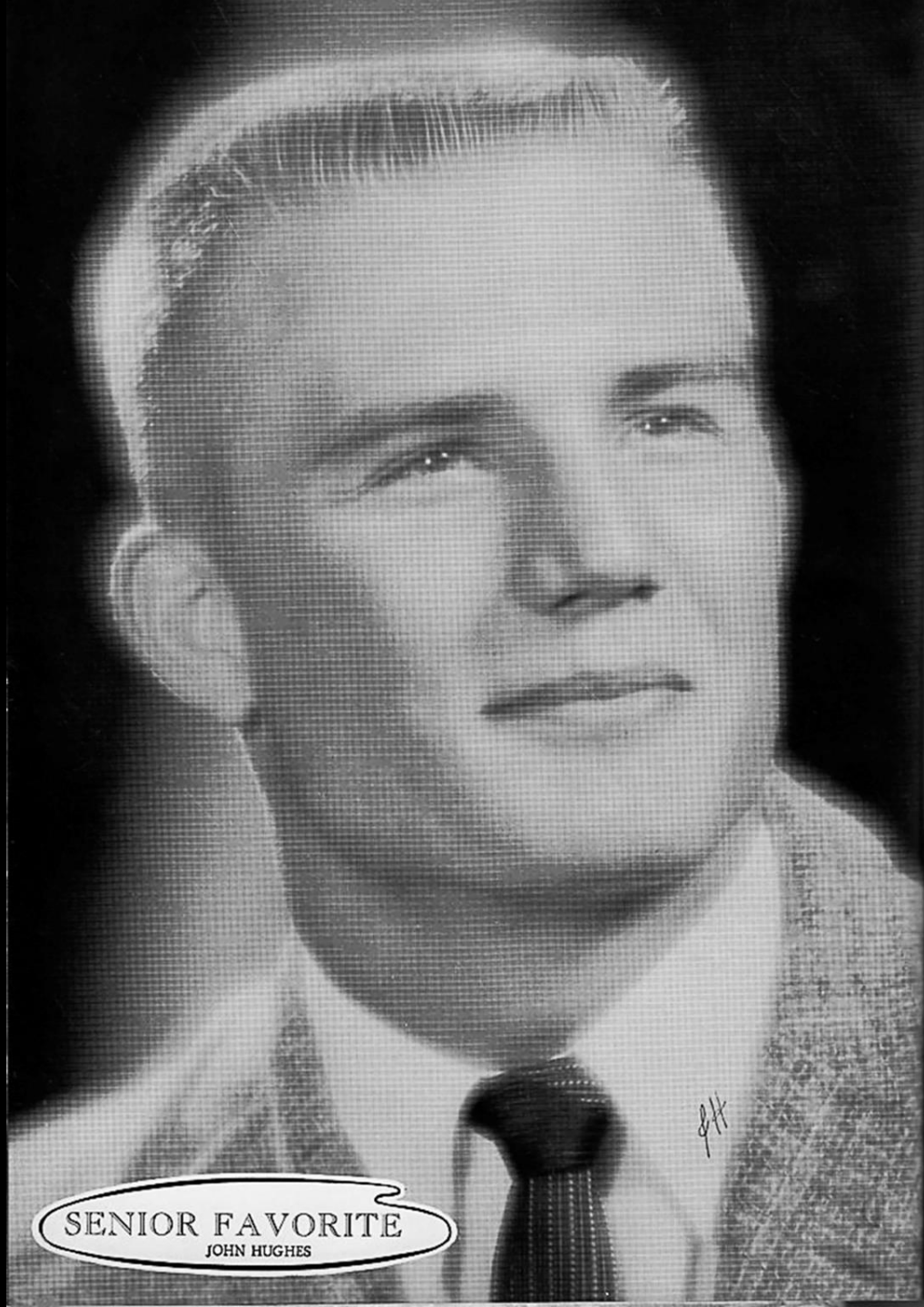
MRS. VIRGINIA PERRYMAN
English I and III
Sponsor:
Senior Class





SENIORS





SENIOR FAVORITE
JOHN HUGHES



SENIOR FAVORITE
PATSY CHAMRAD



SENIOR CLASS OFFICERS

JOSEPHINE WELDER		President
MIKE YOUNG	-	-Vice President
BETTY GILL	-	- Secretary
DAVID LAWRENCE	-	-Treasurer
PATSY CHAMROD		-Reporter

"I Believe" Song

"We Build the Ladder by Which We Climb" Motto

Orchid and Silver Colors

Carnation Flower

BROOKS ARNOLD

Basketball 2, Co-Captain 4; Entertained at Prom 2;
One-Act Play Cast 2; Junior Play Committee 3; In-
dustrial Arts, President 4.

SHIRLEY ATHEY

Band 2; One-Act Play 2; FTA 2, President 4; Library
Club 2, 4.

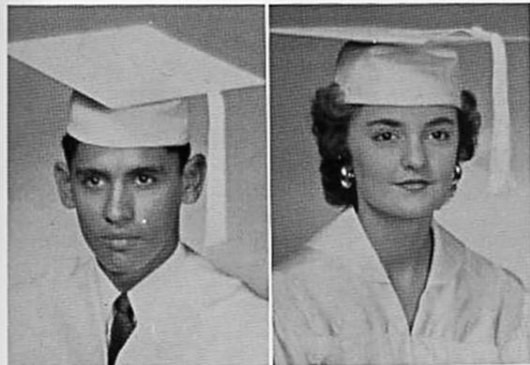
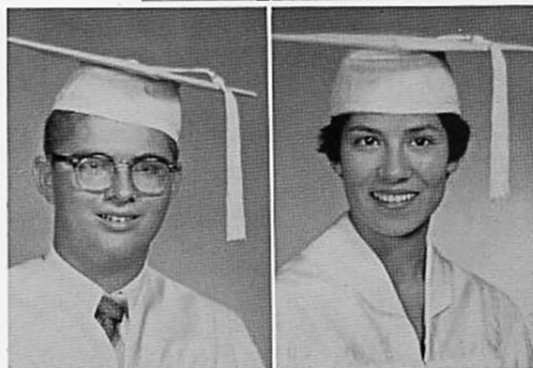


RICHARD BAKER

FHA 2; Key Club 2; Science Club 4.

EWANGELINA BALDILIZ

Student Council Alternate 2; Junior Play
Committee 3; One-Act Plays, Programs
2; Annual Staff 3, 4.



JIMMY BALTAZAR

JUNE BARBER

One-Act Play Cast 2, Director 4; Home-
room Secretary-Treasurer 2; Junior Play
Committee 3; Intramural Basketball 3;
FHA President 4.



LARRY BARECKY

One-Act Play Director 4.

VIRGEAN BAUMANN

Band Treasurer 4; Band 2-4; One-Act Play Cast 4; Of-
fice Staff 3; Powder Puff Bowl; Junior Play Committee;
Secretarial Arts Club 4; Prom Committee 3.



GLORIA JEAN BESS
FHA 2; Physical Education Class Captain 3.

MARY TEMPLE BENNETT
Student Council 2, 3, 4; Cheerleader 2, 3, Head Cheerleader 4; President of Homeroom 2; Nominee Sophomore Favorite; School Fund Queen 2; Ticket Com. 2; Prom Com. 2; Cage Queen Nominee 2; National Honor Society 2, 3, 4; Basketball Manager 2; Annual Staff 3; Annual Dance Com. 3; Nominee Junior Favorite; United Fund Nominee 3; One-Act Play 3; Junior Play; Powder Puff Game 3; Interscholastic League Play 3; Nominee Senior Favorite; Corr. Secretary, Student Council 4; Director One-Act Play 4.



JIMMY BERTRAM
Football 2-4, Tri-Captain 4; Baseball 2-4; Track 2; Student Council 2-4, Vice President 4; Nominee Most Handsome; President Letterman's Club; Who's Who; National Honor Society; Newspaper, Managing Editor; Basketball.

BEA BITTNER
National Honor Society; Band Sweetheart 4; United Fund Nominee; Majorette; State Band; One-Act Play Cast; Office Staff; Powder Puff Football Game; Annual Staff.

WALTER BOENIG, JR.
Band 2-4; Dance Band 2, 3; Newspaper, Make-up Editor 4; Band Equipment Manager.

FLORENCE BLACKWELL



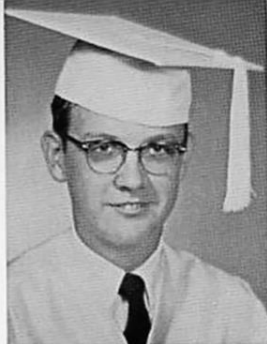
TOMMY BORCHERS
Biology Certificate 2.

ANN BROWN
FTA 2; Office Worker 2; Choir 2, 3; FHA 2; USF Chairman 4; Band Librarian 4.



CHARLES BROWN

Band 2-4; Student Director 3; Key Club 2, 3; Yearbook Staff 2, 3, Associate Editor 3; Science Club 2; Associate Editor Newspaper 3; Nominee Class Favorite 3.



JOAN BROWN

Librarian 2; Band 2; FHA Corresponding Secretary 4, Dinnerbelles 2; Newscaster 4; One-Act Play Cast 4; Senior Play Selection Committee 4.

SHARON BRUNDRETT

United Fund Homeroom Chairman 2; Secretary-Treasurer Secretarial Arts Club; Physical Education Class Captain.



BOGGIE CAFFALL

Student Council 2-4, President 4; Football 2-4; Who's Who 4; National Honor Society 2-4; Junior Favorite; All-School Favorite; Newspaper Staff; Annual.



ALEJANDRO COMACHO

CAROLE CAMPBELL

Advertising Manager One-Act Plays 4; Class Play Com. 4; One-Act Play Cast 4.



BENNY CANTU

Student Council 2; Football 2-4; National Honor Society 2-4.

CONNIE BURNETT



PATSY CHAMRAD

Student Council 2, 3, 4; FFA Sweetheart 2; Nominee Sophomore Favorite 2; Junior Favorite 3; Nominee Miss United Fund 3; One-Act Play Director 4; Nominee All-School Favorite 4; Nominee Most Beautiful 4; Nominee Homecoming Queen 4; Library 4; Homecoming Princess 4.

LOUIS CONTRERAS

DE Club, President 4.



ARMANDO CORTEZ, JR.

ROBERT LEON DAVIS

FFA 2, 3, 4; News Editor, Newspaper 4; FHA Beau 4.

DELORES DAWSON

One-Act Play Director 3; News Cast Reporter 3; Choir 4.

ANNA ROSE DICKINSON

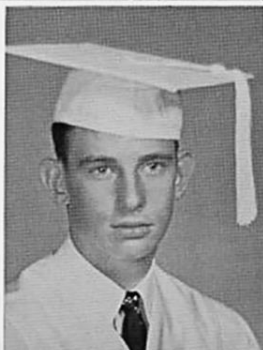
FHA 2; One-Act Play Cast 4.



JIMMY RAY DORSEY

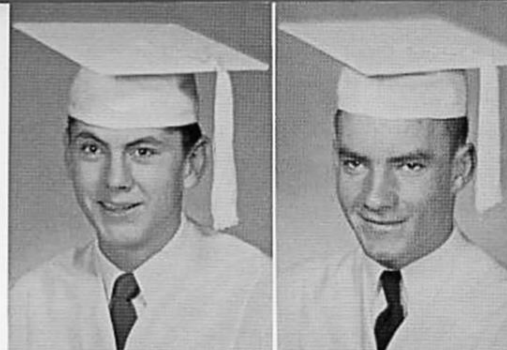
FFA 2, 4; One-Act Play, Propman 4.

HAROLD DAVIS



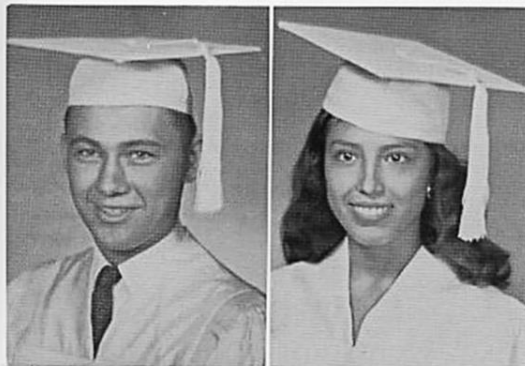
CARL DOUBRAVA
Band 2.

CLAY EISSLER
Band 2, 3; Science Club; Football "B" Team; Key
Club; Junior Play; Propman One-Act Plays; Play Se-
lection Committee.



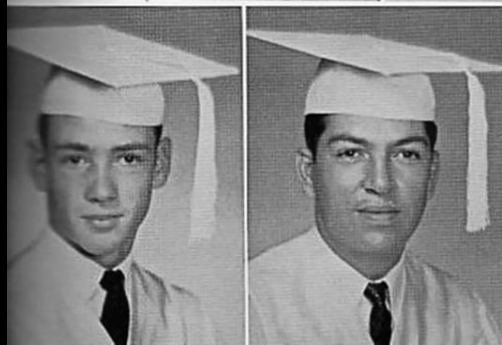
SOPHIE ESPINOSA
Band 2, 3; Secretarial Arts 4.

VERA NELL EVERETT
Band 2, 3.



PHILIP FINKE
Band 2-4; Key Club 2, 4; Band President;
Annual Staff 3; Library Club Sweetheart;
Lieutenant Governor Key Club; USF Chair-
man.

LUPE FLORES
FTA 2; Powder Puff Bowl; Choir 3, 4; In-
tramural Volleyball 3; Newspaper, Cir-
culation Editor; Secretarial Arts Club.



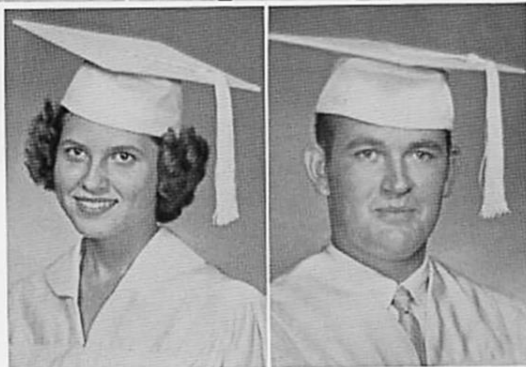
JERRY FOSTER
FFA 2, 3, 4; One-Act Play Cast; Christmas Assembly
Program.

ABE GARCIA
Track 2, 3; One-Act Plays, Lights.



LYDIA GARCIA

DELTON GIESICK



BETTY JEAN GILL

Band 2, 4; Office 2; Class Reporter 2; FTA 2, 3; FHA 2; Science Club 2; One-Act Play 2; Miss United Fund Queen 3; Student Council 4; Nominee Most Outstanding 4; Nominee Homecoming Queen 4; United Fund Princess 4.

JACK GLOVER

Band 2; FFA 4.

MARY ROMINE GROBE
Band 2, 3; DE 4.

ALICIA HAM
Library 2, 3; Band 2, 3; FHA 4; Secretarial Arts Club 4.



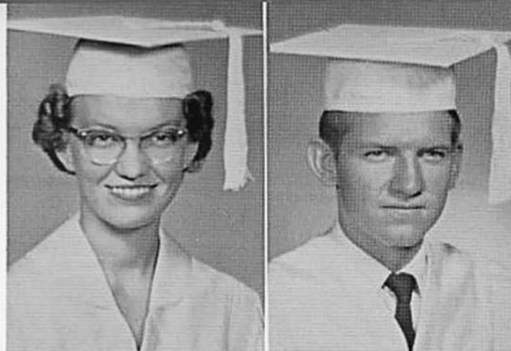
DOROTHY HARDEMAN
Choir 2; One-Act Play 3.

MARY ALICE HARTSFIELD
One-Act Plays, Costumes.



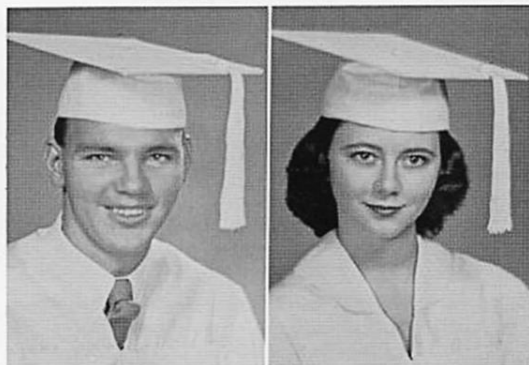
FRIEDA HARTZENDORF
 FHA; Secretarial Arts 4; Homeroom Chairman, Welfare
 Program.

FREDDIE RAY HECTOR



R. J. HENRICHSON
 DE Club Treasurer 3; DE Vice President 4;
 Industrial Arts Vice President 4; One-Act
 Play, Stage Manager.

SANDRA HEROD
 Office Worker 2; FHA Parliamentarian 4;
 President Secretarial Arts Club 4; Welfare
 Program Chairman 4.



EVELYN HOLTON
 Prom Entertainment 2; One-Act Play,
 Costumes 3.

JAMES HOLTON
 FFA.



JOAN HOUSEHOLDER
 One-Act Play, Makeup 3.

JOHN HUGHES
 Football 2-4. Tri-Captain 4; Basketball 2-4; Track
 2, 3; Baseball 2, 3; Nominee Sophomore Favorite;
 Newspaper 2-4, Associate Sports Editor 3, Editor 4;
 One-Act Play 3; Senior Class Favorite; Nominee All-
 School Favorite 4; Nominee Most Likely To Succeed;
 Nominee Most Outstanding; Nominee Most Athletic;
 Who's Who.

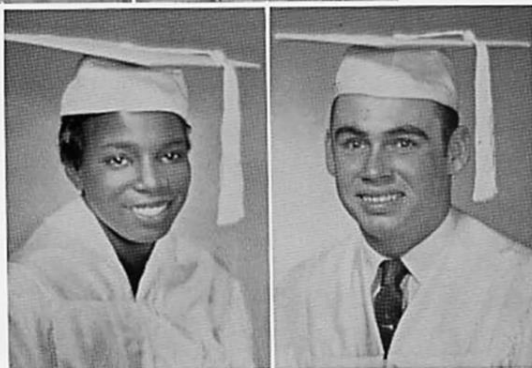


TOMI CLYDE HUTCHINS

Band 2; FTA 2; FHA 2; One-Act Plays, Ticket Chairman 4.

FRANK JACKSON

Band 2-4, All-District 4, All-Region 2, 4; Football 2-4, All-District 4; Choir 2-4, All-Region 4; NHS 2-4, Vice President 4; Thespian Club 4, President 4; Letterman's Club 3, 4; Junior Play 3; One-Act Play 4; Contest Play 4; Most Outstanding 4; Nominee Most Likely to Succeed 4; Annual Staff 4.



LENA JOHNSON

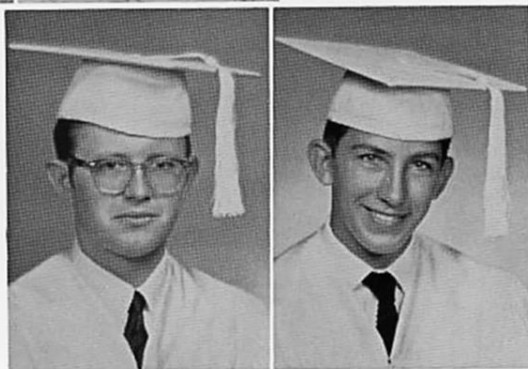
FMA 2; One-Act Plays, Costumes 4.

DAVID JONES

Football 2-4; Basketball 2, 4; Track 2; Baseball 2; National Honor Society 2-4; Newspaper 2, Publicity Editor 4.

GEORGE KELLER
Newspaper 2.

WALTER KELLEY
FFA 2-4.

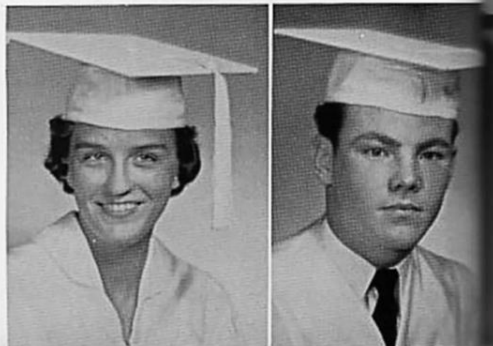


ARNETTE LAUGHTER

Band 2-4, Historian 3; Majorette 3, 4; Library Club 2-4, Vice President 4; National Honor Society 2-4; Newspaper 2, 4, Business Manager 4; FTA 2-4; Choir 2-4; Office Staff 3.

DAVID LAWRENCE

Band 2; Football 2-4; Class Treasurer 4.



JUDY LAWSON

National Honor Society 2-4; FHA 3, Recording Secretary 4; FTA 4; Annual Staff 3, 4; Secretarial Arts 4; One-Act Plays, Make-up Chairman 4; Powder Puff Bowl 4.



WILLADEAN LEVERMAN

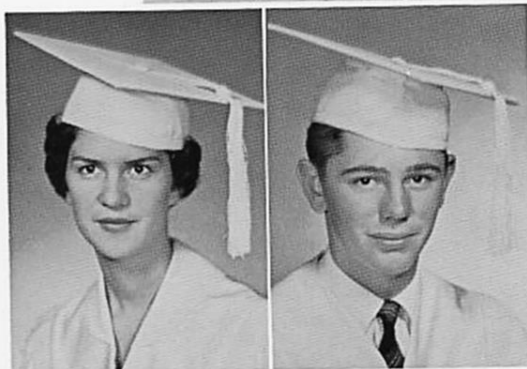
Band 2; Christmas Assembly Program 4; One-Act Plays, Advertising 4; FHA 4; Speech Class Play Cast 4; Secretarial Arts 4; Industrial Arts 4; Junior Play, Advertising; Basketball 3; Powder Puff Bowl 3; Prom Committee 3; Coach Office Staff 4.

MARGIE LONGORIA

Class Secretary-Treasurer 2; FHA 2; DE Club Sweetheart 3; Choir, Secretary-Treasurer 4.

GEORGE LOVE

Basketball 2-4; Industrial Arts Club, Treasurer 4.



JIMMY LUNDSCHEN

Football 2-4; Basketball 2-4; Baseball 2-4; Newspaper 2, 4; Track 3; Prom Committee 3; Nominee Most Athletic 4.

YVONNE MCGREGOR

One-Act Plays, Advertising 4; Secretarial Arts Club 4.



JOYCE McMAHAN

Band 2, 3; FTA 2; United School Fund Chairman 2, 4; One-Act Plays, Property Manager 3; Welfare Program Chairman 4.

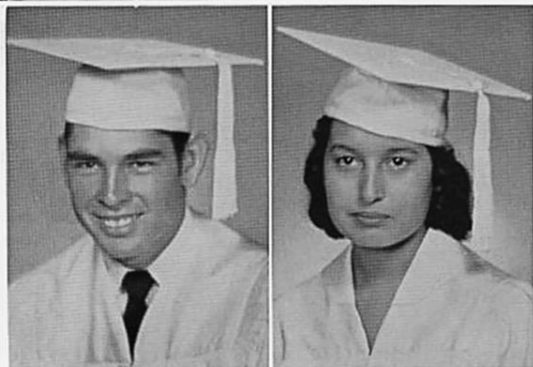
PATRICIA McMILLION

Annual Staff 2, 3; One-Act Plays, Advertising Committee 2, Director 4; Junior Play, Advertising Committee; Powder Puff Bowl 3; Newspaper, Make-up Editor 4; Thespian, Recording Scribe 4; Christmas Assembly Program 4; Served at Prom 2; Prom Committee 3.



MIKE McWHORTER
One-Act Play Cast 2; Band 2-4; Newspaper 2; Key
Club 2; Cheerleader 4.

RENATE MAIER
Secretarial Arts Club 4.



TRINO MARTINEZ
Football 2-4; Basketball 2-4; Track 2, 3;
Prom Committee 3; Newspaper 4; Indus-
trial Arts Club 4.

TERESA MEDINA
Secretarial Arts Club 4.

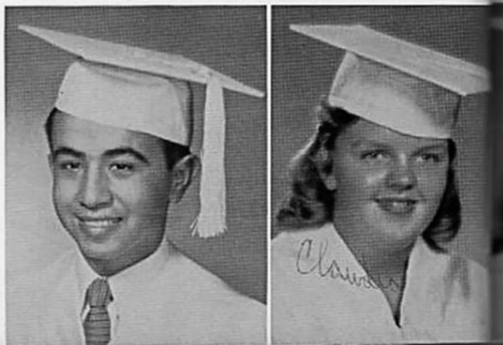
LANNY ROSS MILLS
KIBL Newscaster 4; One-Act Plays, Prop-
man 4.

BOBBY MOYA
Stage Club 2.



OTTO MOYA

CLAUDIA NELSON
Band 2-4; Publicity Manager 4; Newspaper, Art
Editor 4.



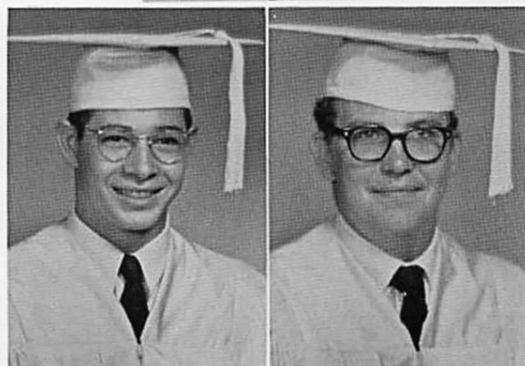
JON NEWTON
Senior Play Selection Committee 4.

ALBERTINA OCHOA
DE 4.



JON OLSEN
Science Club 2-4, Vice President 2,
Program Chairman 3, President 4; FFA
Secretary 2; Key Club 2-4; Football 2;
Track 2, 4; National Honor Society 2-4;
One-Act Play Cast 3; Junior Play 3;
KIBL Broadcaster 3; Most Likely to Suc-
ceed 4; Who's Who 4.

TIP O'NEIL
FFA.



GRADY O'SHIELDS
Student Council 2-4; Annual Staff 2-4,
Photographer 3, Editor 4; Key Club 2-4,
Secretary-Treasurer 3, Vice President 4;
Choir 2; National Honor Society 2-4,
Treasurer; Broadcaster, KIBL 3; News-
paper 3; One-Act Play Cast 3; Who's
Who 4; Two-Star Thespian 4.

ANNIE PAREDES
FHA 2.



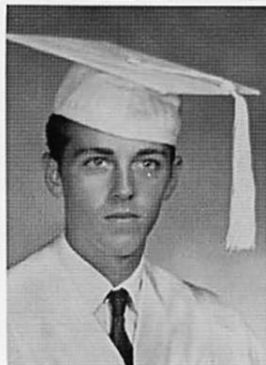
NELLIE PARKS
FTA 2; Band 2-4; Librarian 4; Library Club 2, 4; Junior
Play 3; Most Beautiful 4; United School Fund Chair-
man.

BARBARA SUE PAYNE
Band 2; FHA 2; DE, Treasurer 3, Sweetheart 4; United
School Fund Chairman.



PATRICIA KAY PETER
FHA 2.

NORMA PIEPER
Band 2-4, Business Manager 4; FHA 2; National Honor
Society 2-4; Office Staff 3; Junior Play Cast 3.

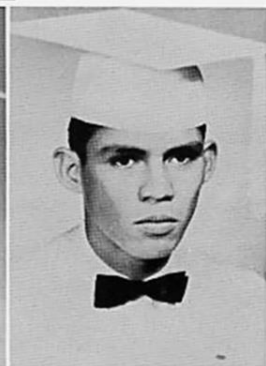
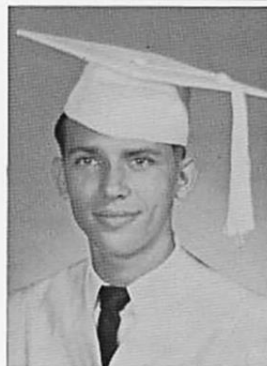


ROGER PREWITT
One-Act Play Cast 3; KIBL Newscaster 3;
FFA 2; Junior Play 3; Senior Play Selection
Committee 4.

HELEN RAMIREZ
FTA 3, 4; FHA 3; Powder Puff Bowl 3;
Newspaper, Art Editor 4; Choir, Reporter
4.

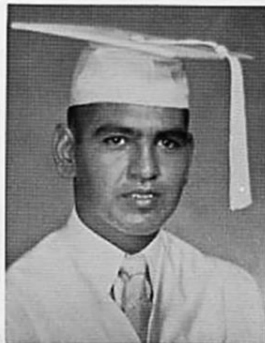
HAROLD REESE
One-Act Plays, Stage Assistant 2.

REYNALDO REMOS



RUBEN REYES
Football 2, 3; FFA 2-4, Reporter 4.

BETTY ROYCE ROBNETT



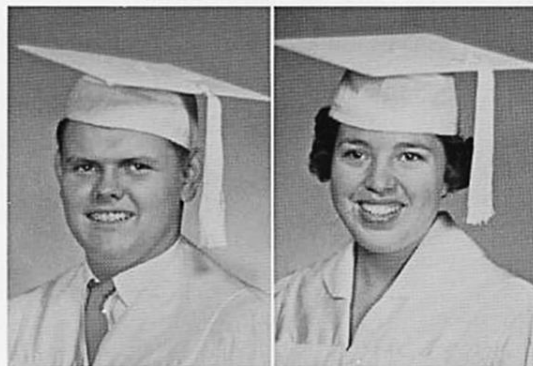
PALMIRA RODRIGUEZ
One-Act Plays, Make-up Committee 4.

THERESA RODRIGUEZ



HERSIE ROTHISBERGER
Science Club 2, 3; Senior Play Committee 4; Band 2, 3; One-Act Plays, Lights 3, Sound Director 4; KIBL Newscaster 4; Basketball Manager 4.

MARTHA SAENZ



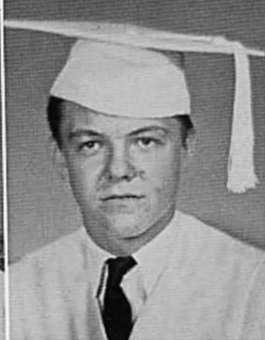
LYDIA SAUCEDA

CAROL SHOMAKE
Library Club 4; One-Act Plays, Make-up Committee; Speech Class Play Cast 4; Senior Play Committee 4.



VIVIAN SINOR
One-Act Plays, Prop Committee 2; Office Staff 3; Junior Play Committee.

MARILYN SLAY
Band 2-4; Choir 4; National Honor Society 2-4; Prom Committee 3; Newspaper, Copy Editor 4; Library Club 4; Latin Club, Treasurer-Reporter 4.



GLYNIS SMITH
Office Staff 2; Band 2, 3; FHA 2-4, Recording Secretary 3, Treasurer 4; Served at Prom 2.

JAMES SMITH
One-Act Plays, Stage Manager 4; Speech Class Play Cast 4; Senior Play Selection Committee 4; Christmas Assembly Program 4.



REX SMITH
FFA 2.

PETE SOLIZ
One-Act Plays, Ticket 4.

PORTER SPARKMAN
Band 2, 4; Thesplan 4; National Honor Society 2-4; Newspaper, Make-up Editor 4; Junior Play Cast 3; Science Club 2, 3, Vice President 3; One-Act Play Cast 4; Co-Chairman Senior Play Committee 4.

RUTH STANZIOLE



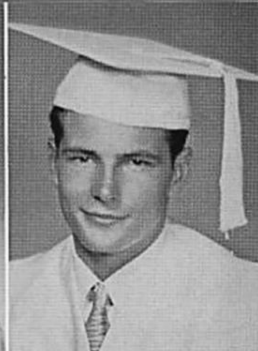
GENTRY STEELE
One-Act Play Cast 3; One-Act Play, Stage Committee 2; KIBL Newscaster 3; Junior Play Committee 3; Senior Play Committee 4; Band 2-4; Newspaper 2-4; News Editor 4; Science Club 2, 3; Key Club 3, 4; Debate Club 4.

ROSIE SYLVA
DE, Secretary 3.

Rosie



HERBERT LEE TAYLOR, JR.
Band 2-4.

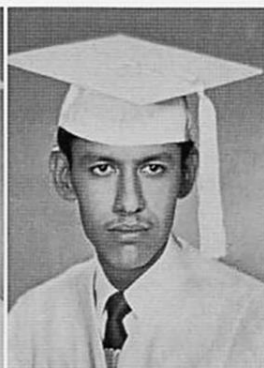


BILL TUCKER
KIBL Newscaster 4; One-Act Play Cast; Secretarial Arts Beau 4; Christmas Assembly Program 4; Speech Class Play Cast 4; Senior Play Committee 4.

KAREN VAN ALLEN
Library Club 2-4; Band 2, 4; Choir 2, 3;
FTA 2-4, Historian 4; FHA 2; Science Club 2-4; Newspaper, Feature Editor 4; One-Act Plays, Programs 4; Speech Class Play Cast 4.



EMMA VELASQUEZ
Secretarial Arts Club 4.



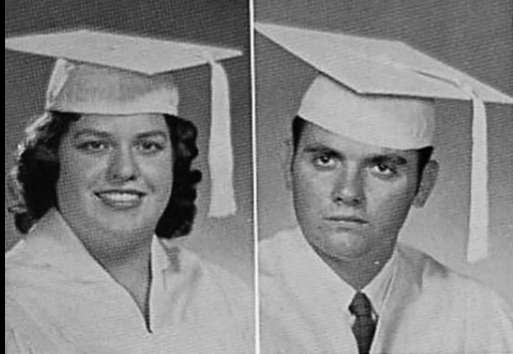
SOBEIDA VELASQUEZ
Secretarial Arts Club 4.

CHARLES VERGARA
One-Act Plays, Stage Manager 4.



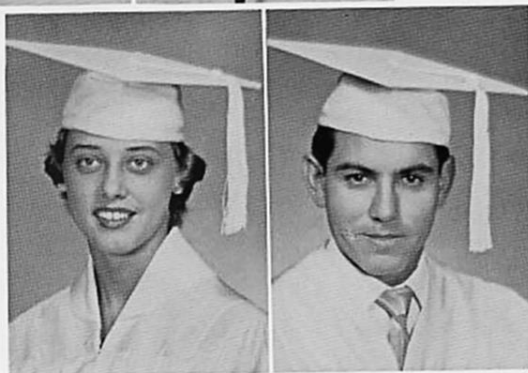
DIANE WILLIAMS
Secretarial Arts Club, Vice President; United School Fund Chairman 4; Welfare Program Chairman 4; FHA 3, 4; Powder Puff Bowl 3; FTA 3; Prom Committee.

GERALD WORKMAN
Band 2-4, Equipment Manager 4; KIBL Newscaster 4; One-Act Plays, Propman 4; Newspaper Staff 4; Industrial Arts Club 4.



DELIA VILLARREAL
Choir 2; FHA 2.

CURTIS VOSS
Track 2; Newspaper, Sports Editor 4; One-Act Plays,
Propman; Speech One-Act Play Cast 4.



SANDRA WALKER
Choir 2; FTA 2-4, Reporter 3, Secretary
4; FHA 2, First Vice President 3; Band 3;
Junior Play Cast 3; Newspaper 4; Nom-
inee All-School Favorite; Nominee Most
Beautiful; Industrial Arts, Secretary 4;
Football Sweetheart; Thespian.

ALFONSO TIJERINA

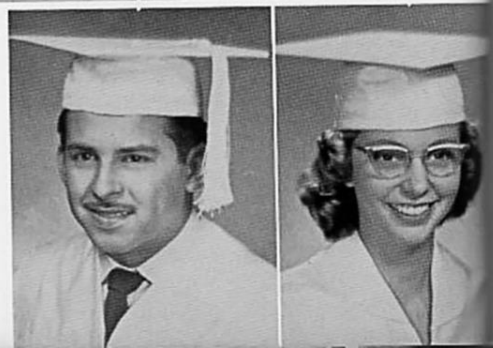
ROSEMARY WILSON
One-Act Play Cast 2; Library Club 2-4;
Science Club 2-4, President 3, Vice
President and Reporter 4; FTA 2-4; Na-
tional Honor Society 2-4; Nominee Most
Likely to Succeed.

JACKIE WINFREY
Band 2-4; Choir 2-4; National Honor
Society 2-4; One-Act Play Cast 4; Speech
Class Play Cast 4.



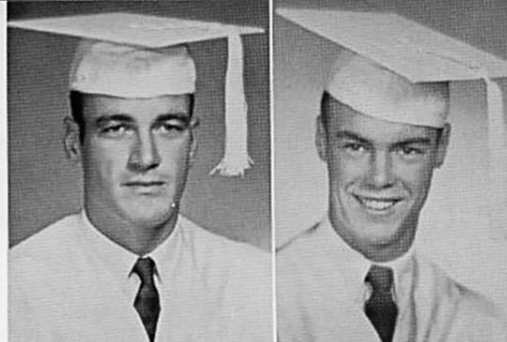
ADAN TREVINO

JOSEPHINE WELDER
Class President 2-4; Library Club 2, 4; Sophomore
Favorite; National Honor Society 2-4, President 4;
Nominee Junior Favorite; Annual Staff 3; Junior Play;
Nominee Senior Favorite; Nominee All-School Favor-
ite; Nominee Most Likely to Succeed; Most Outstand-
ing; Nominee Homecoming Queen 4; Student Council;
United School Fund Queen; Who's Who; Thespian;
One-Act Play Cast 4.



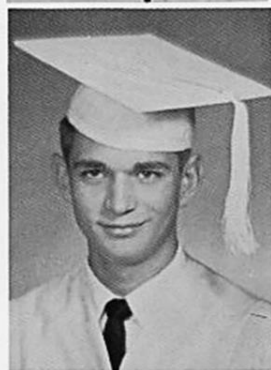
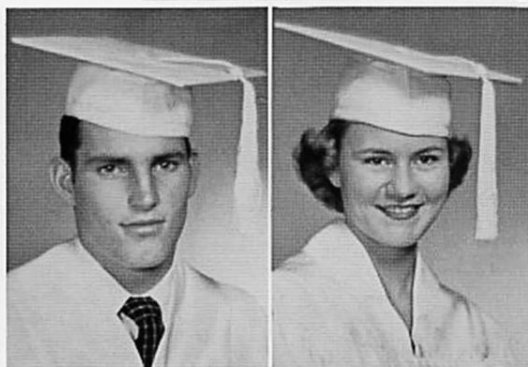
ALBERT WRIGHT
Football 2; FFA 2-4, President 4.

BOBBY WRINKLE
Newspaper Staff 2, 3; Football 2-4; Basketball Manager 2; Track Manager 2-3; National Honor Society 2-4.



MICHAEL YOUNG
Class Vice President 2, 3; Sophomore Favorite; Football 2-4; Newspaper Staff 2; Nominee Junior Favorite; Nominee Senior Favorite; Most Handsome.

MARY YOUNGBLOOD
Library Club 2-4, President 4; Band 2-4, FFA 2; Secretarial Arts Club, Parliamentarian 4.

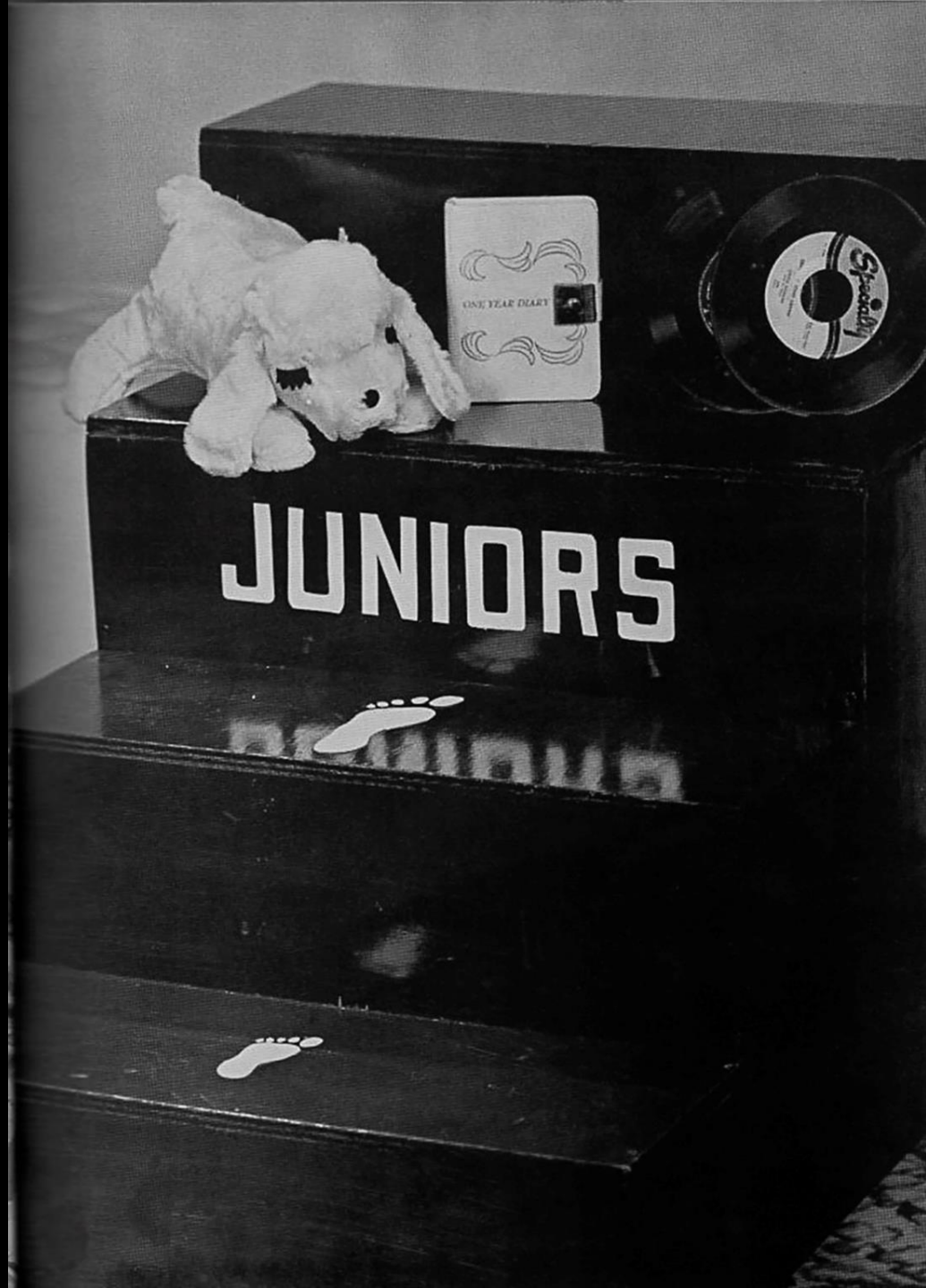


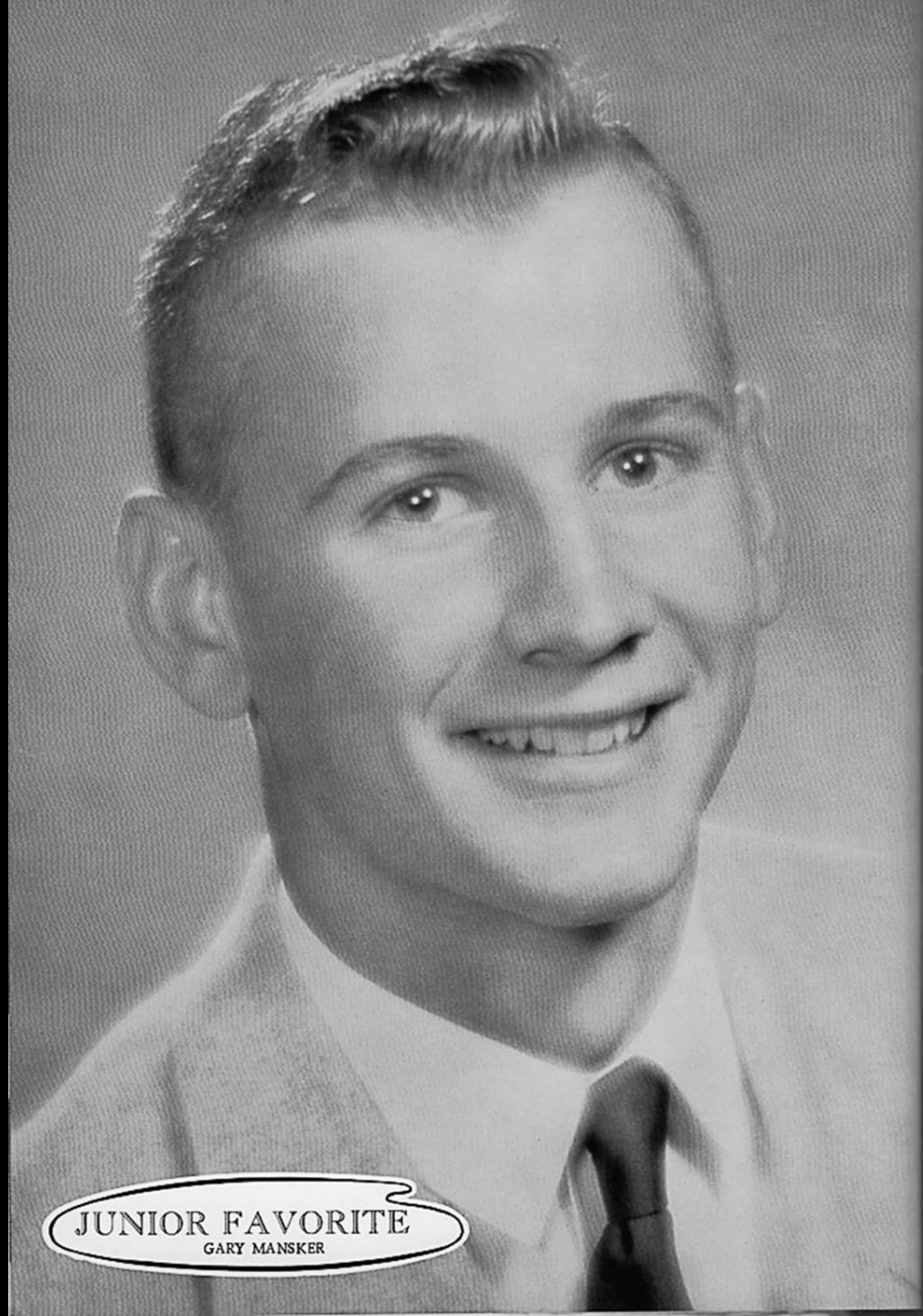
CONWAY YOUNT
Band 2-4, Student Conductor 4; Key Club 2-4; Annual Staff Photographer 3-4; Golf 3; One-Act Play Cast 3; KIBL Newscaster 3; Junior Play Committee; Drum Major 4; National Honor Society 3-4; Stage Band 3-4; District and Regional Band 3-4.

Picture not available:
J. D. FISH
CONRADO GARCIA
WAYNE RIDER
EDWARD WICKER

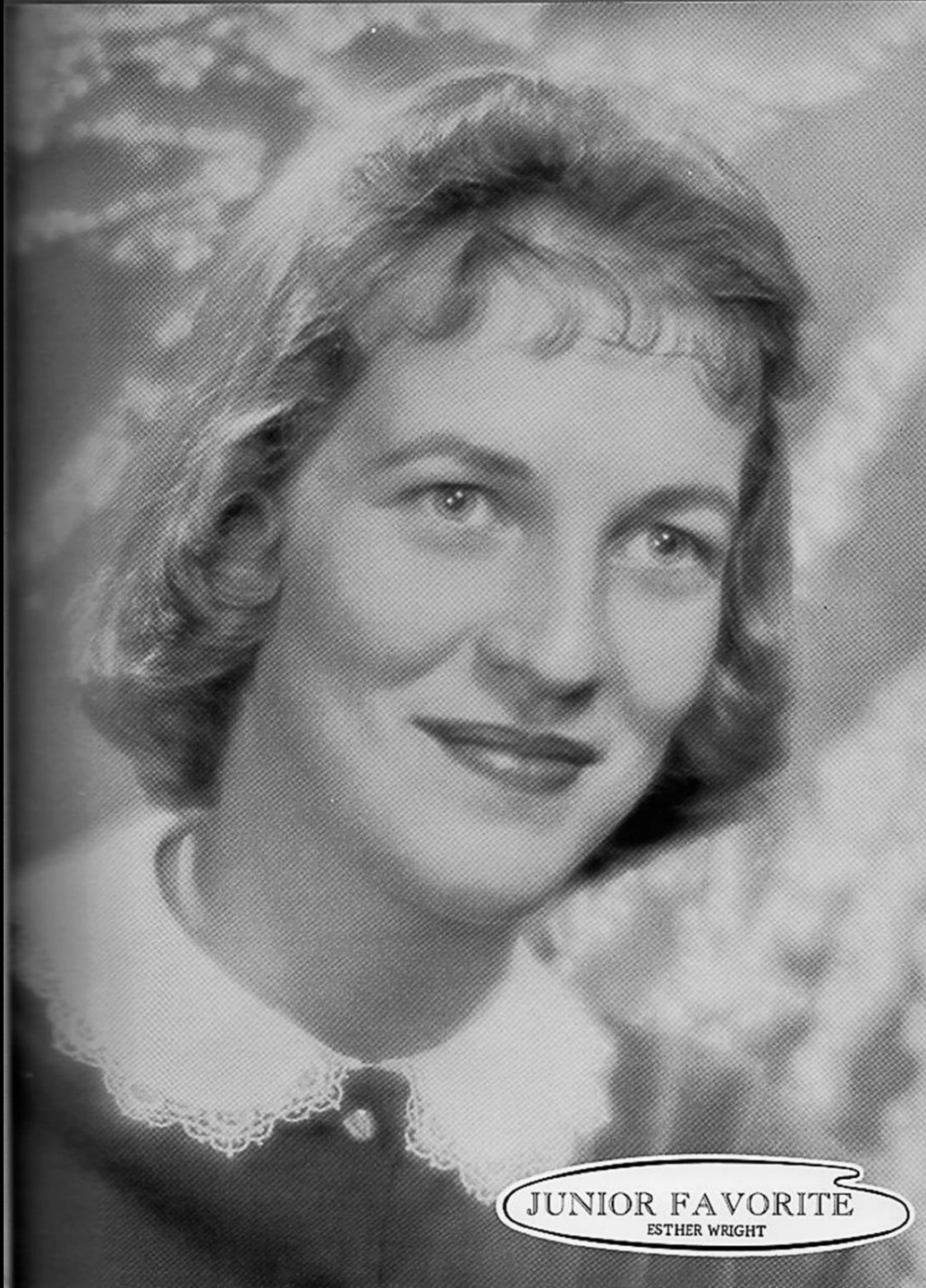


Most Beautiful
AND
Most Handsome





JUNIOR FAVORITE
GARY MANSKER



JUNIOR FAVORITE
ESTHER WRIGHT



JUNIOR CLASS OFFICERS

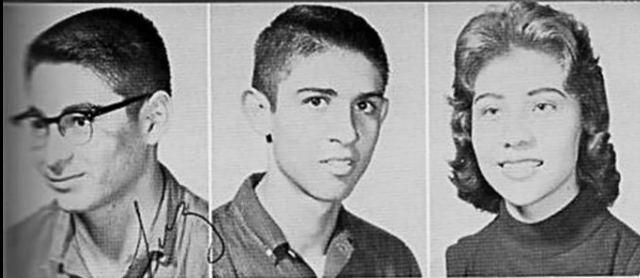
GARY MANSKER	President
ESTHER WRIGHT -	- Vice President
JOHN KACHOLD	- Secretary
VICKY ROWLAND - - -	Treasurer
LUZ ALANIS - - -	Reporter

Stacy
"You'll Never Walk Alone" Song

"Not for One but for All" Motto

Red and Silver Colors

Red Rose Flower



LUZ ALANIZ
JOE HENRY ALANIZ
SAUNDRA ALANIZ



JOHN ALEXANDER
JACKIE ANDERSON
SHERRY ARNETT

GILBERT ARREDONDO
ANNA ROSE AUSTIN
JANE BAIRD



SHARON BAKER
WILLIE BERGERA
KATHLEEN BERNSEN



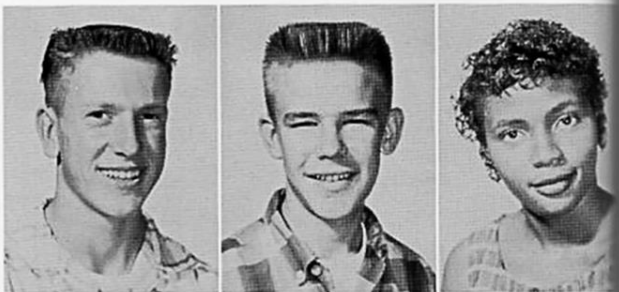


JOHN BLEVINS
KATHERINE BOEMER
LA NELLE BOENIG



JOAN BOHMFALK
MARTHA BOWES
BARBARA BROWN

DAVID BRUMMETT
BOB BUTTS
ANNIE CALLIS

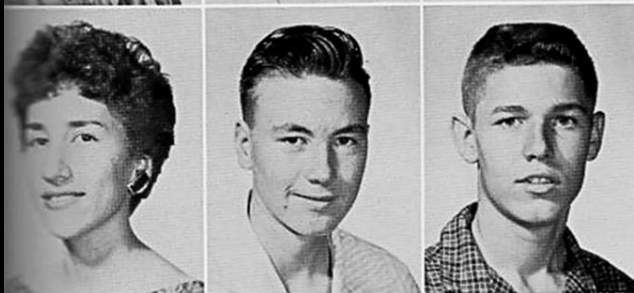


RICHARD CASAREZ
SCARLETT CASTELLO
BILL CROWE





PATTI DAVIS
JOAN DAY
ISAIAS DEL BOSQUE

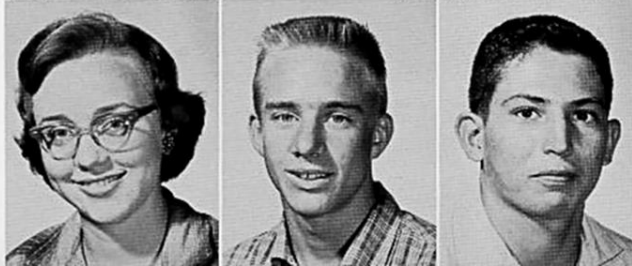


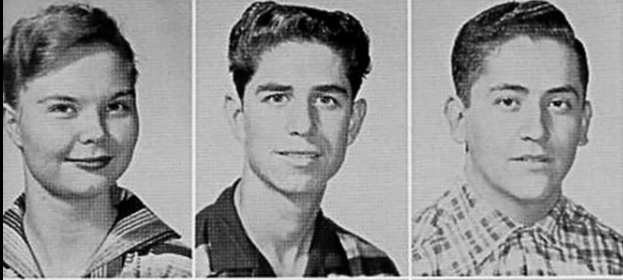
JOSIE DE LEON
SONNY DENSON
DON DONOHO

MARTHA JO DORSEY
SUSAN DOUGHERTY
GEORGE DUFFY



DOROTHY DUNN
TOMMY DUNN
JOE GARCIA





LANETA GLINES
FERNANDO GOMEZ
THOMAS GONZALES



JEFF GOSS
BOB GOYNES
SANDRA HAMM

CURTIS HARRIS
ALENE HATCHER
DANNY HAUGEN

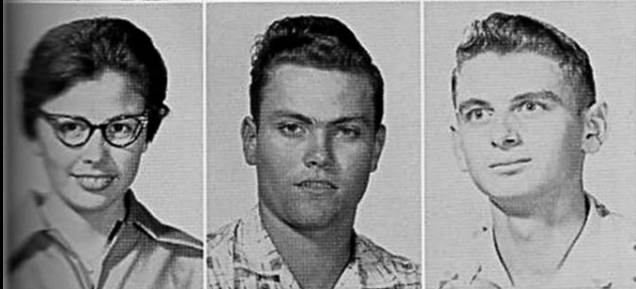


ELIZABETH HELVENSTON
PAUL HERNANDEZ
TOMMY HICKS



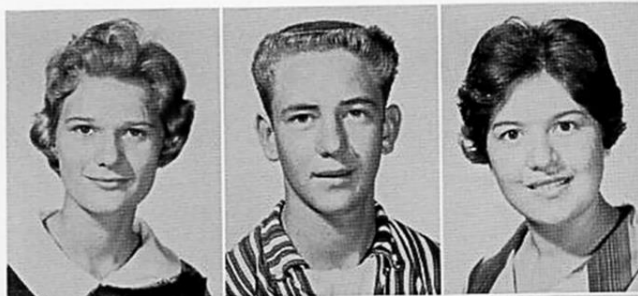


MIKE HITT
KATHERINE HOPKINS
ROSS HUEGLER



MARY LOU HUNTER
MIKE HUSER
JOHN KACHOLD

BARBARA KENNEDY
BILL LAZENBY
SANTOS LONGORIA



TONY LOPEZ
LEODANDA LOZANO
SYLVIA LOZANO



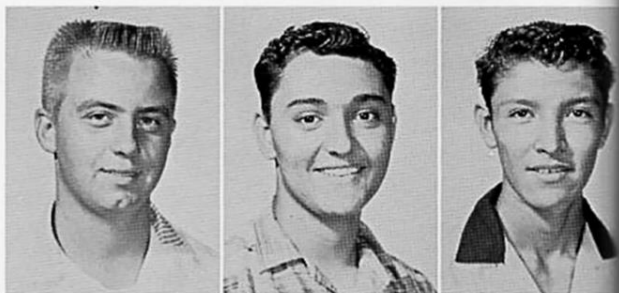


NONA SUE McKINNEY
GARY MANSKER
JOSEPHINE MEDINA



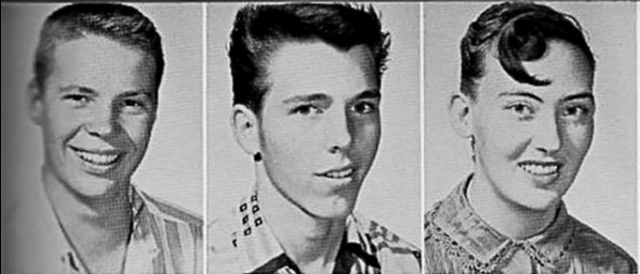
GUADELUPE MENDEZ
ISIDRO MONTEZ
BEVERLY JEAN MOORE

BILL MORELAND
ALFREDO MORENO
JOHN MORENO

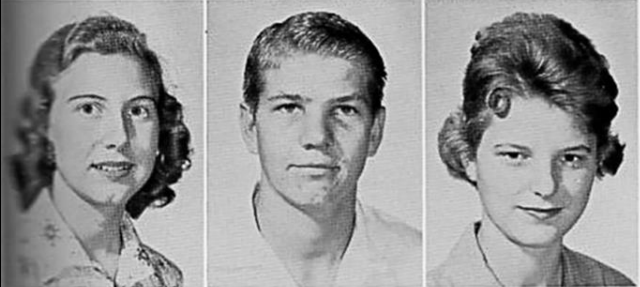


JULIE MORENO
MARY JANE MORENO
RICHARD NARANJO





TOMMY O'NEIL
JOHNNY ORCHARD
LORETTA OVERBY



SHARON PAGE
JIMMY PALMER
BARBARA PATTY

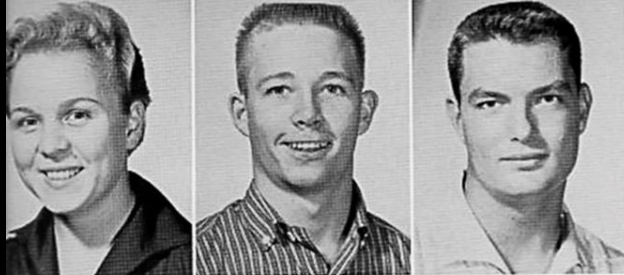
PROPERTY OF
A. C. JONES HIGH SCHOOL LIBRARY
BEEVILLE, TEXAS

MAX PATTY
ANGELITA PEREZ
MARIO PEREZ

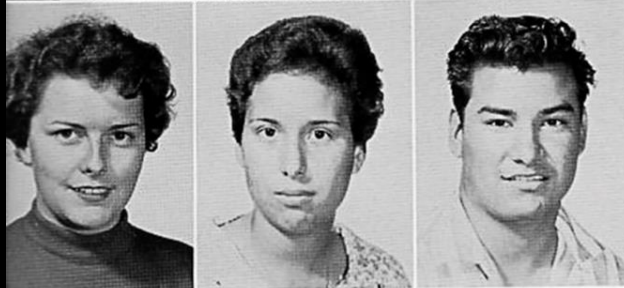


GENE PETERS
GLENN PETTIT
JAMES PIEPER





JOY POGUE
CARL PRINCE
WILSON RAY



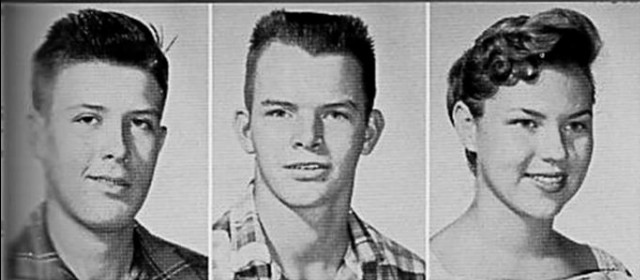
LINDA ROACH
PAULINE RODRIGUEZ
RENE RODRIGUEZ

VICKY ROWLAND
LOIS SANDERS
DOMINGO SANTELLANO

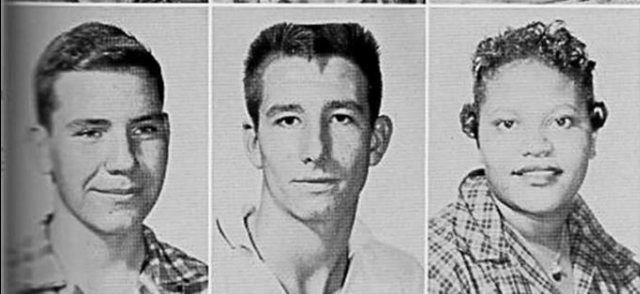


HATTIE ANN SKORUPPA
JOHNNIE SMEJKAL
BOB SPIELHAGEN





DON SUGAREK
BONN TANNER
PATRICIA THOMPSON



JERARD THORNTON
GENE THURMOND
SHIRLEY TIPPENS

OPHELIA TREVINO
JOE TRLICA
ELOY VALDEZ

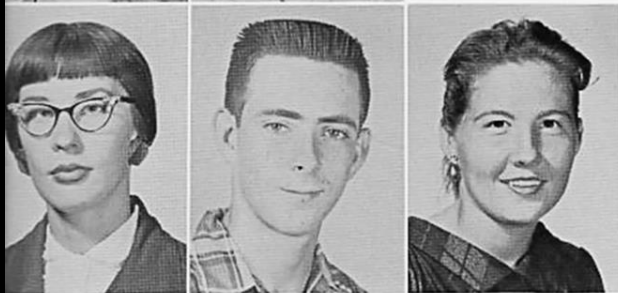


ANGELINA VASQUEZ
LEO VILLAREAL
CAROL WAGNER





BILL WALKER
PAT WEESE



MARY LOU WEST
E. L. WHITE
CAROLYN WILLIAMS

MARY WILSON
DORETHA WRIGHT
ESTHER WRIGHT

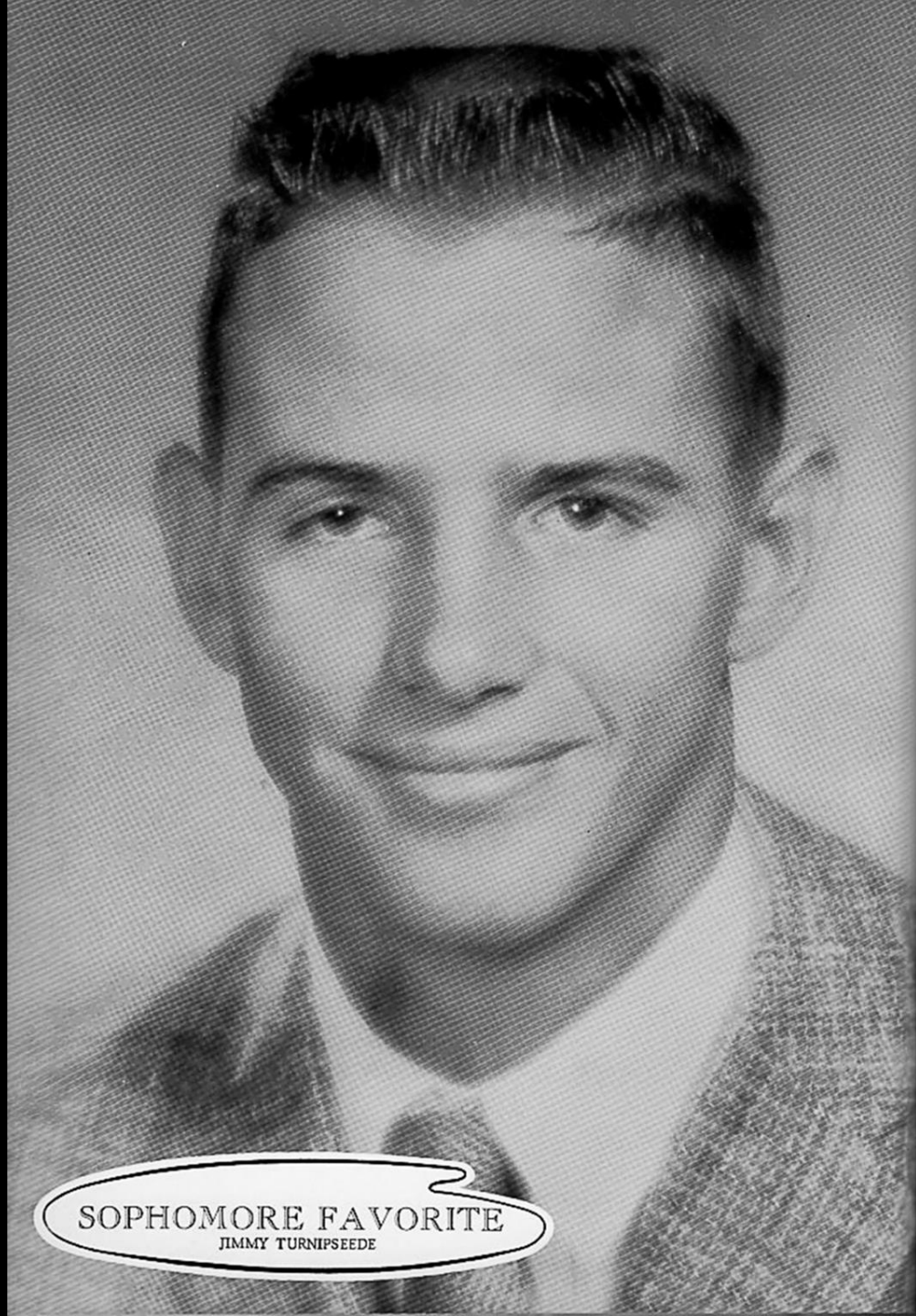


CHARLES WRINKLE
TOMMY WRINKLE
ELSA ZUNIGA





SOPHOMORES



SOPHOMORE FAVORITE
JIMMY TURNIPSEDE



SOPHOMORE FAVORITE
DIANE ABBOTT



SOPHOMORE CLASS OFFICERS

JUDY TURNER

President

JIMMY TURNIPSEDE

- Vice President

JUDY NEAL

Secretary-Treasurer

BARBARA BURNS

-

Reporter



Diane Abbott
Alicia Adamez
Billy Alexander
Frances Almarez



Rose Marie Anderson
Stanley Ann Anderson
Bonita Arnett



Espiridin Arrizola
Ruth Austen



Robert Ball
Dorothy Baltazar



Robert Baylor
John Beasley
Ida Lee Bell

Johnny Bell
Mary Benson
Richard Bertam
Kenneth Booth



Gloria Borrego
Timothy Bowes
George Brin
Terry Briscoe



Cherry Broadway
Barbara Burns
Jack Burns



Ruth Burriss
Tommy Camacho



Dorothy Canada
Elizabeth Cantu



Josie Cantu
Lydia Casarez
Joel Case



Mary Helen Castillo
Mary Clark
Andrea Cortez
Fred Cox

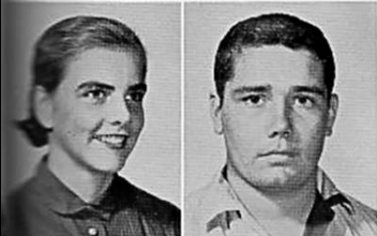




Ralph Davis
Maureen Dawson
Esther De La Cruz
Pilar De Leon



Carol Dement
Mary Ann De Russe
Charles Drinkard

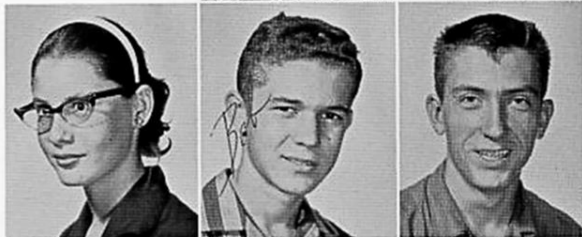


Jill Duffy
James Elliot

Chester Everett
Mary Louise Everett



Melissa Everett
Bobby Frazer
Robert Gallagher



Virginia Gallagher
Eloy Galvan
Carmel Garcia
Domingo Garcia



David Garza
Earnest Garza
Mary Garza
Robert Garza



Johnny Gold
Carlos Gomez
Sofia Gonzales



Claude Gotthardt
Maynard Green



Ellis Greer
Adolfo Guerrero



Gilbert Guerrero
Clinton Ham
Sarah Kay Handy



Kathy Harris
Sarah Harris
Linda Hausmann
Joan Hebert



Lesley Henry
Kenneth Hinderman
Mary Lou Hoff
Bill Holloway



Florette Huebner
James Jackson
Barbara Johnson



Shirley Kirk
Betty Koenig



Nancy Lawson
Serafin Leal



James Leeton
Janet L'Heureux
Patsy Loessin



Julian Longoria
Pablo Loya
Hore Luna
Jayne Lundschen

Don McCraig
Ralph McCraig
Phyllis McGill
Pat McWhorter



Sharon Marion
Aubrey Martin
Delores Martinez



Noemi Mayorga
Henry Medina



Thad Moore
Henry Moreno



Patricia Moreno
George Morrill
Oscar Naranjo



Judy Neal
Ralph Nelson
Charles Newsom
Deborah Newton





John Nowlin
Authur Nutt
Elmer Oatman
Myra Odom



Jackie Oswalt
Salura Owings
Barbara Paulson



Hilaria Perez
Margarito Perez



Delano Pfeffer
Jimmy Polozeck



Sandra Prewitt
Corliss Fay Prinz
Lois Jean Pruski



Rosemary Reagan
Richard Reese
Felix Reyna
Mary Reyna

Beaver Rider
Ben Rodriguez
Lupe Rodriguez
Juan Rodriguez



Santos Rodriguez
Gayle Rosebrock
Elfida Ruiz



Mary Salazar
Ruben Saldivar



Fred Saudia
Paul Santellana



Basilio Saucedo
Hilmer Schwieriske
Joyce Scott



Gordon Searcy
Jane Searcy
Jimmy Searcy
Jerry Sharp



Bev Shepardson
Wanda Sherrill
Ronald Sieg
Jeannie Simon



Robert Sims
Frances Sinor
Barbara Ann Smith



Pedro Soliz
Tony Soliz

Lee Sparks
Gene Stephenson



Paul Stephenson
Gwyn Still
Micheal Sturm



Gilbert Sylva
Janet Taylor
Pat Taylor
Sammy Thorp



Felix Tijerina
Manuel Trevino
Mary Jane Trial
Jane Turner



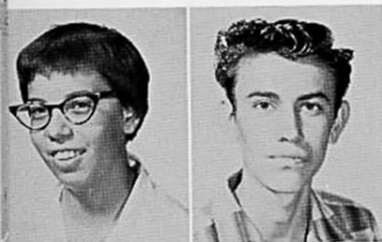
Judy Turner
Linda Turner
Sandra Turner



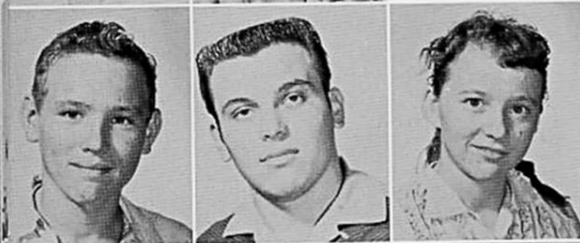
Jimmy Turnipseede
Charlotte Vander Stucken



Mary Ann Vaughn
Isreal Vega



Richard Vickery
Elias Villareal
Darlene Walter



John West
Jodie Williamson
Olivia Williamson
Martha Ann Wise





Daniel Vargas
Ann Woolworth
Kathryn Wyrick



Marcela Ybanez
Harriet Yount



Manuel Zapata



The Lone Ranger



Kiss me fool!



Remember your



Comfy?



The Line-up



Having fun?



No. X2376815

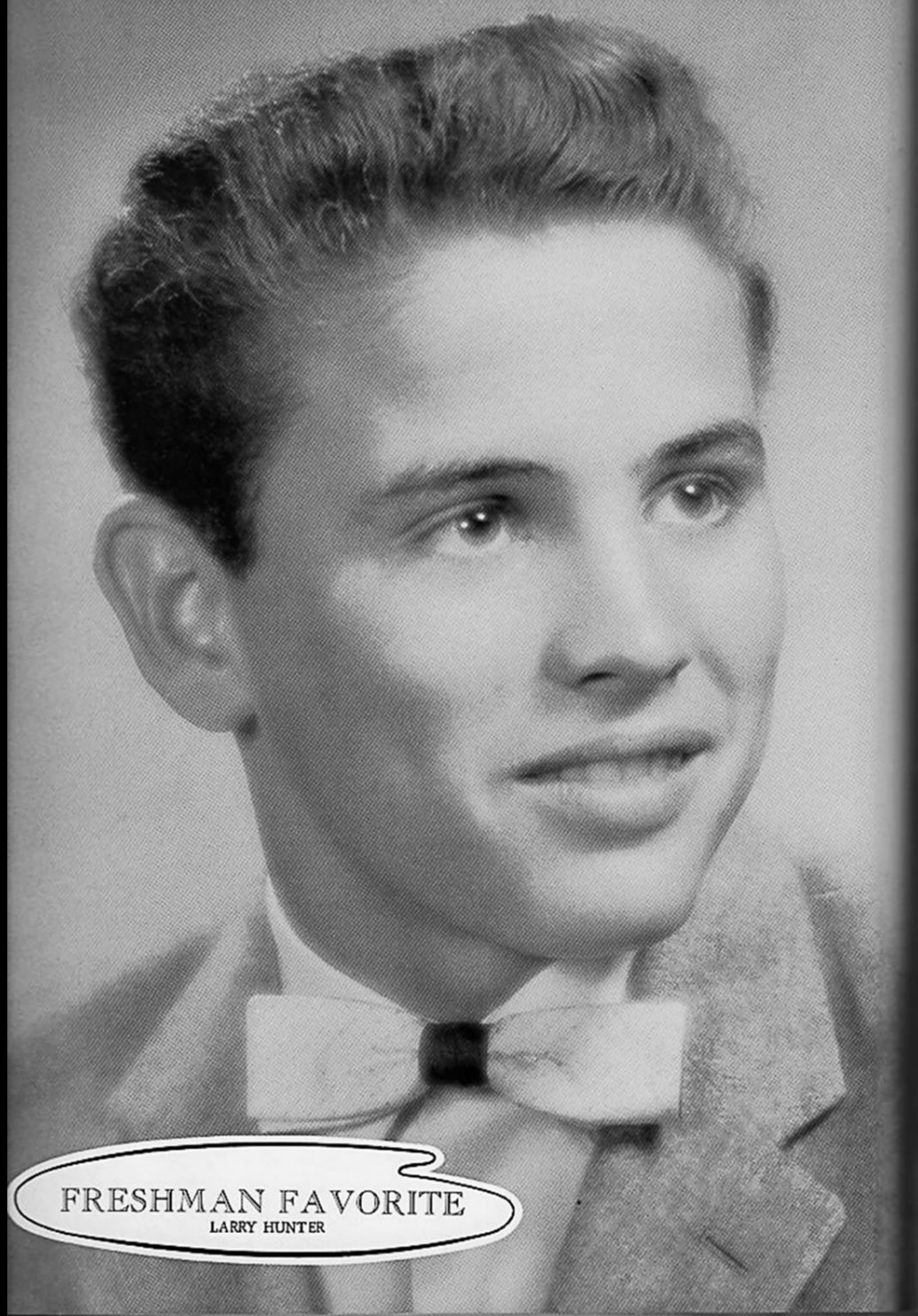
fish waving the flag



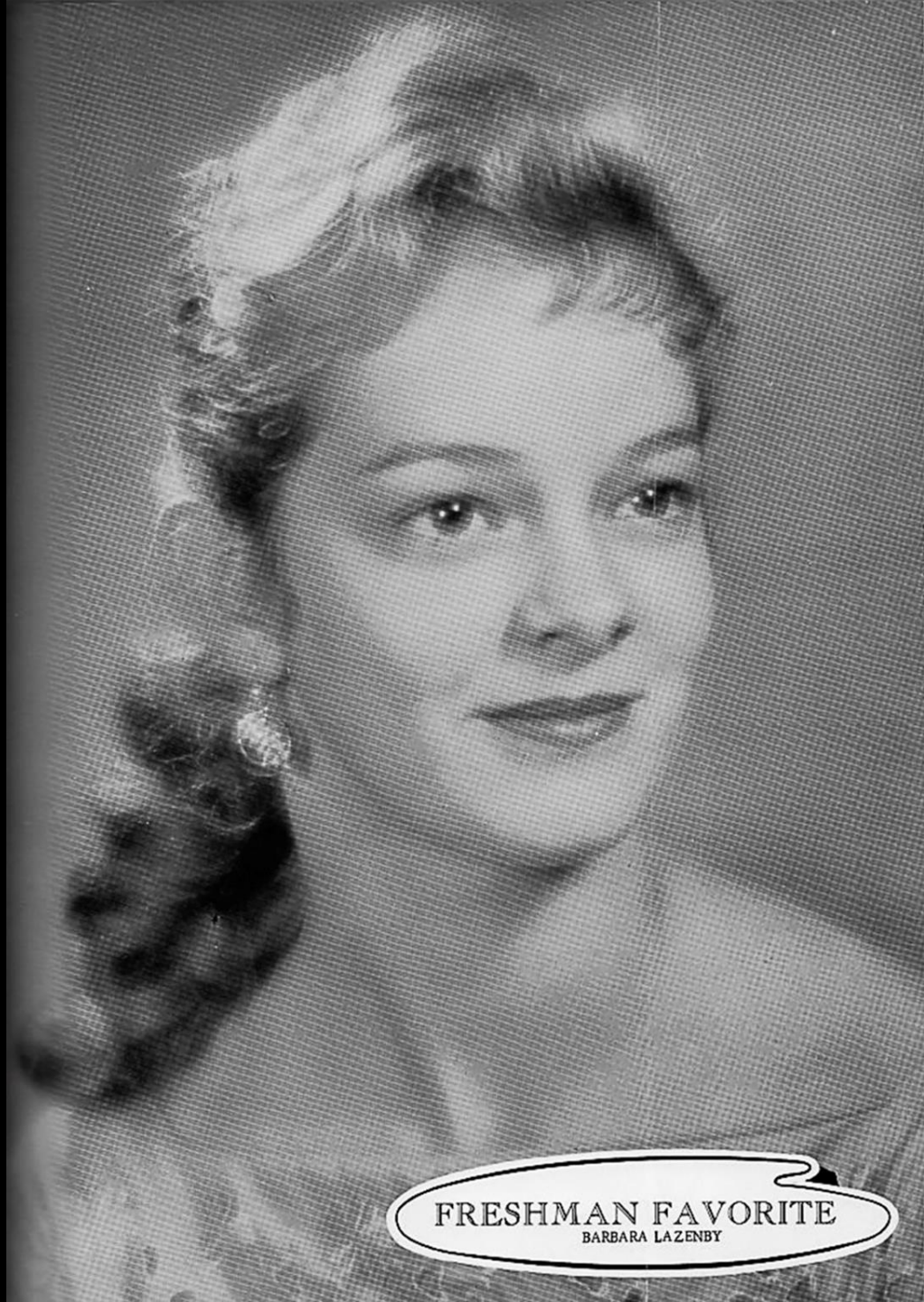
Nominees for Most Beautiful



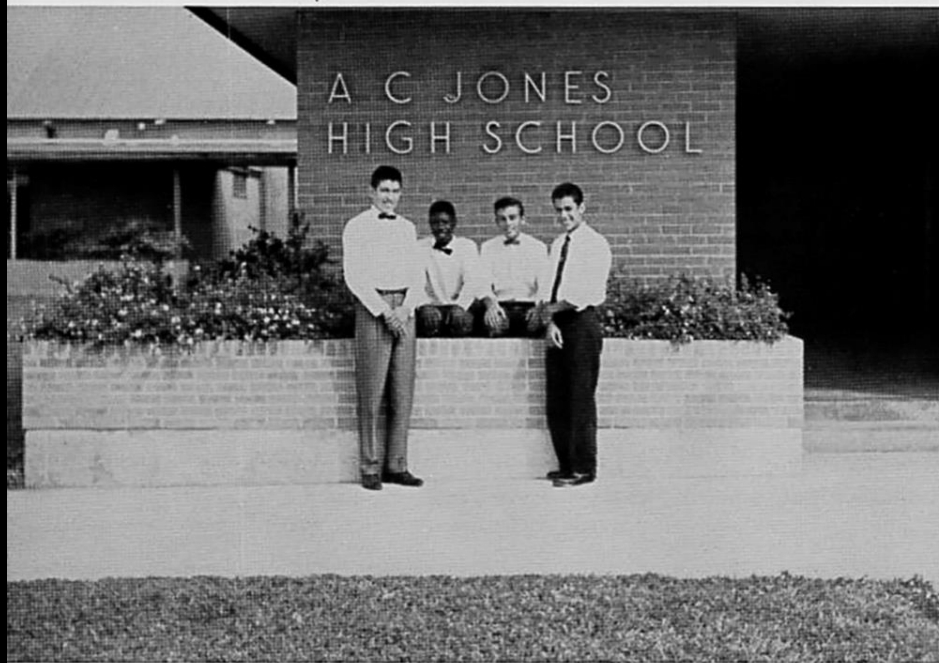
FRESHMEN



FRESHMAN FAVORITE
LARRY HUNTER



FRESHMAN FAVORITE
BARBARA LAZENBY



FRESHMAN CLASS OFFICERS

HENRY PAMERIZ	-	- President
GERALD GARCIA		Vice President
EASTERLING DAVIS	-	Secretary-Treasurer
MAX RANGE	-	Reporter

Adelina Adamez
Patricia Adams
Michael Adkins
Clemente Aguilar



Richard Alcala
Luis Alaniz
Jeanette Alexander
Tommy Amen



Dora Armijo
Santos Arredondo
Julia Baldillez
Eugene Barrera



Elizabeth Bauch
Peggy Beasley
Maria Bergara
Robert Berry



Willia Dean Bess
James Blackburn
Robert Blankenship
Jerry Bond



Mary Ann Borchers
Victoria Botello
Judith Bowman
James Otis Brazil



Candido Brionez
Austin Edwin Brown
Charlie Burchfield
Manuel Cabano





Reyes Camacho
 Eleazar Canales
 David Carson
 Tony Carpenter



Domingo Castillo
 Juanita Castillo
 Fred Chapa
 Erlinda Chavarilla



Mary Chesshir
 Rayburn Coleman
 Adam Cooley
 George Crosley



Johnny Daggy
 Easterling Davis
 Orville Davis
 Teddy Denning



Marshall Dickinson
 Monte Dickinson
 Martha Doubrava
 Dan Douglas



Garvin Downes
 Eddie Dunn
 Neville Edgar
 Richard Espinoza



Barbara Everett
 Benny Ford
 Sandra Foster
 Bill Fowler

Gary Gallandat
Mary Alice Galvan
Alfredo Garcia
Antonio Garcia



Carlos Garcia
Gerald Garcia
Mary Garcia
Reyes Garcia



Rudy Garcia
Santos Garcia
Aurota Garza
Mary Ann Geisler



Donnie Gilliam
Aracelia Gonzales
Mary Louise Gonzales
Carol Grayson



Margaret Griffith
Miriam Gudmanson
Ramon Guerra
Carlos Guerrero



Olga Guerrero
Ysaías Guerrero
Henry Harris
Eddie Hector



Patsy Henry
Preston Herbert
Andrea Herrera
Glen Hogan





Newton Holton
Billie Horton
Robert Huddler
Robert Hudson



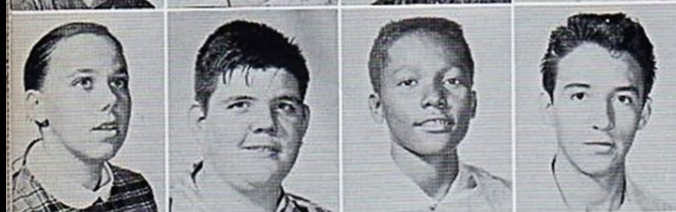
Mary Jane Hughes
Larry Hunter
Bob Humphrey
Sharon Ivey



Dorothy Johnson
Edward Johnson
Barbara Jones
Cheri Kenison



Linda Kennedy
Shella Lawrence
Barbara Lazenby
Caroline Love



Ingrid Maier
David Marshall
James Martin
Domingo Martinez

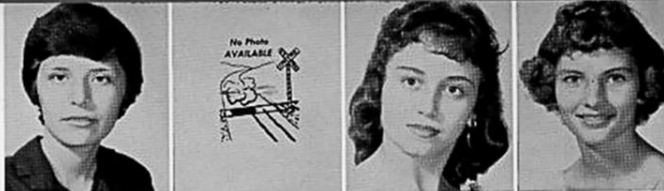


Jimmy Martinez
George Matocha
Mary Alice Medina
Martin Millard



Sandra Mitchell
Bill Mock
Ernesto Molina
Jay Moore

Felipita Moreno
 Pete Moreno
 Anita Munoz
 Sharon Mussett



Ortencia Naranjo
 Manuel Navarrete
 Johnny Nelson
 Bill Newsom



Shirley Nowlin
 Buddy Odom
 Mary Ann Ortega
 Amelia Ortiz



Frank Ortiz
 Dan Pantoja
 Gene Payne
 Anna Mary Perez



Demasio Perez
 Erineo Perez
 Johnny Perez
 Juanita Perez



Mary Alice Perez
 Sylvia Perez
 Margaret Peter
 Joseph Plachy



Henry Ramirez
 Lee Ramirez
 Luis Ramirez
 Lydia Ramirez





Rudy Ramirez
Max Range
Rose Mary Rendon
Juan Reyes, Jr.



Marmuel Rincon
Ann Ellen Robinson
Angelita Rodriguez
George Rodriguez



Jesus Rodriguez
Lydia Rodriguez
Henry Roy
Lydia Sanches



Dora Alica Santellana
Ruth Sims
Alice
Allen Smith



Margaret Smith
Nadine Smith
Joe Frank Soliz
Olga Sosa



Joyce Stover
Pat Stricklin
Ramiro Tanguma
Ramond Tanguma



Jimmy Tanner
Barbara Louise Taylor
Conrad Taylor
Philip Terry

Jerry Kenneth Thomas
T. Y. Thomas



Marcos Torres
John Torrey
Luis Trevino
Lupe Trevino



Helen Trevino
Manuel Trevino, Jr.
Robert Trevino
Johnny Turner



Virginia Valencia
Janice Vaught
Jeannette Vaught
Eugene Vickery



Augustine Viaurri, Jr.
Ray Villareal
Jerrold Wayne Windel
Bobbie Jewel Williams



Sammy Wolfe
Joe Wright
Viola Sue Wright
Walter Wright



Richard Young
Reba Youngblood
Edna Catol Yount
Ola Mae Moore



Some of our Boosters

BEEVILLE BOAT AND MOTORS

DEAN'S RED AND WHITE FOOD STORE

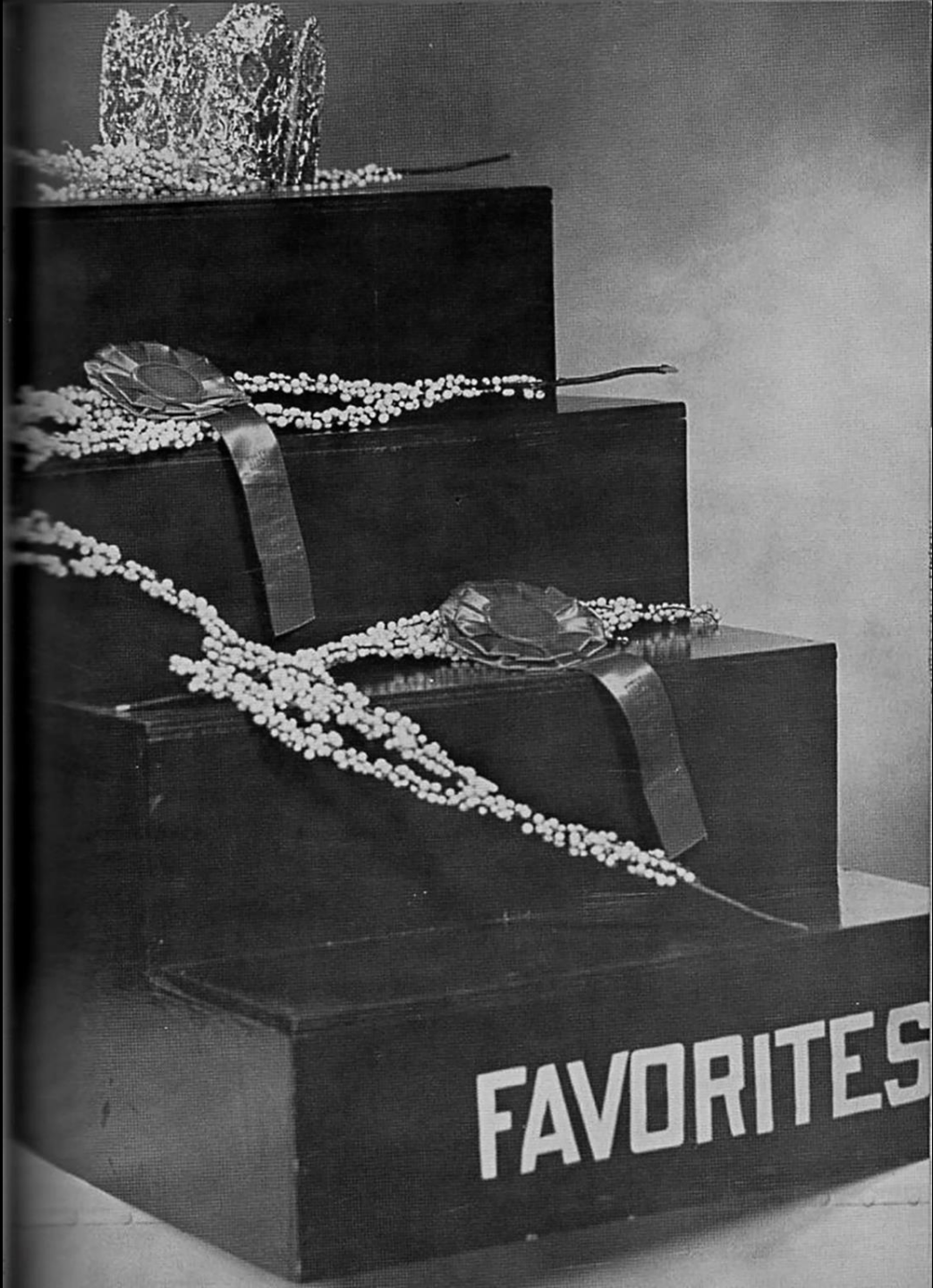
LADIES SPECIALTY SHOP

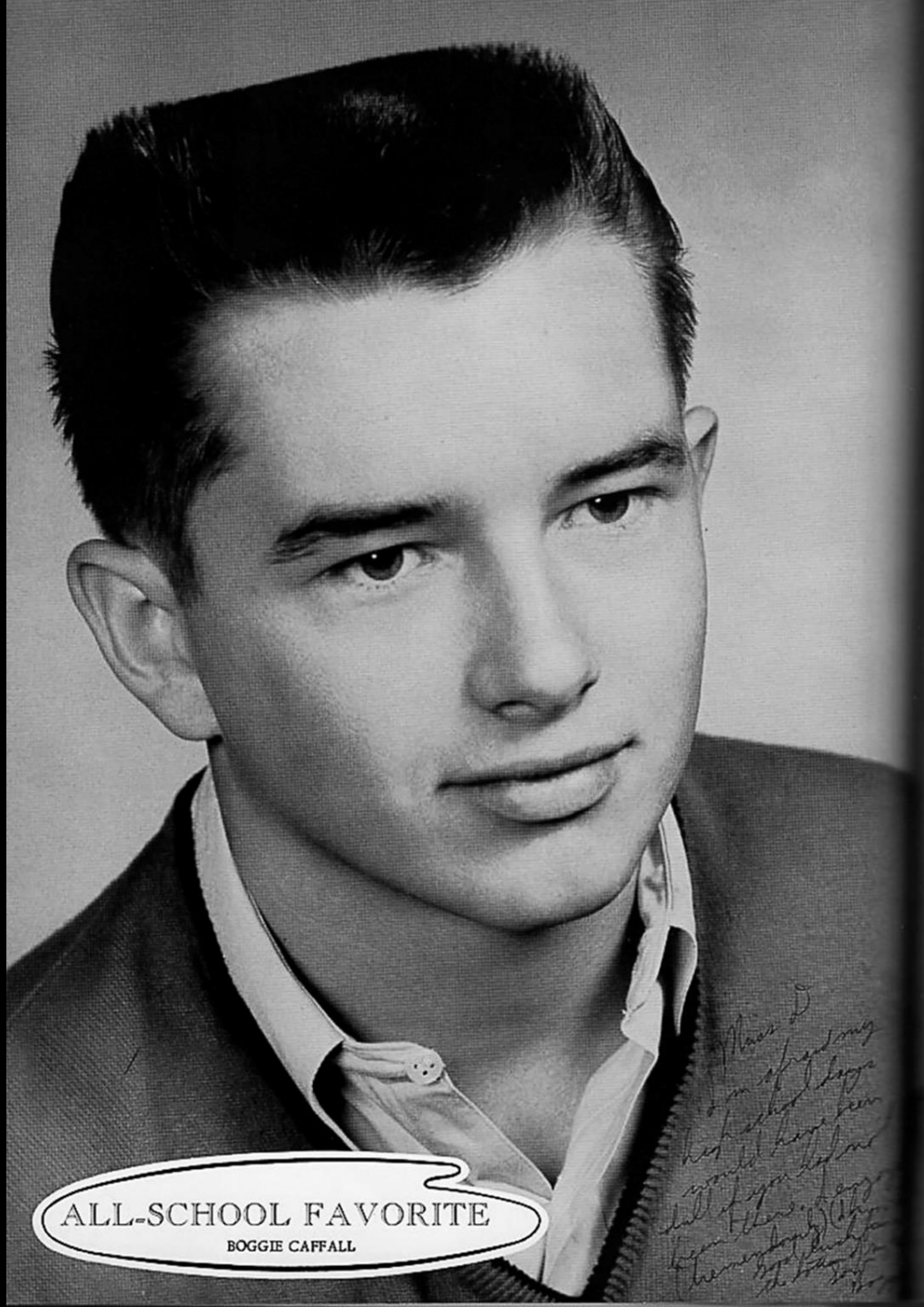
WISE'S FRUIT STAND

EASTON GULF SERVICE STATION

ODD HOUR GROCERY STORE

AUTOGRAPHS





ALL-SCHOOL FAVORITE
BOGGIE CAFFALL

*Miss D
I'm afraid my
high school days
would have been
full of you if I
hadn't been so
lucky to meet
you in high school
I'll always love
you
Boggie Caffall*



ALL-SCHOOL FAVORITE
MARY TEMPLE BENNETT

WHO



FRANK JACKSON

BETTY GILL



JON OLSEN

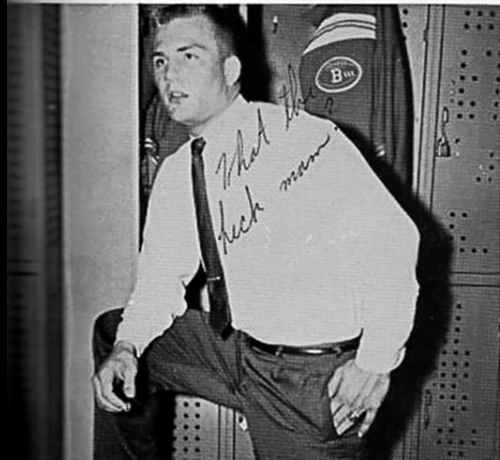


WHO

J. D. FISH



PATSY CHAMROD



JOHN HUGHES



BOGGIE CAFFALL

MARY TEMPLE BENNETT



JIMMY BERTRAM



WHO

GRADY O'SHIELDS



JOSEPHINE WELDER



EDDIE WICKER

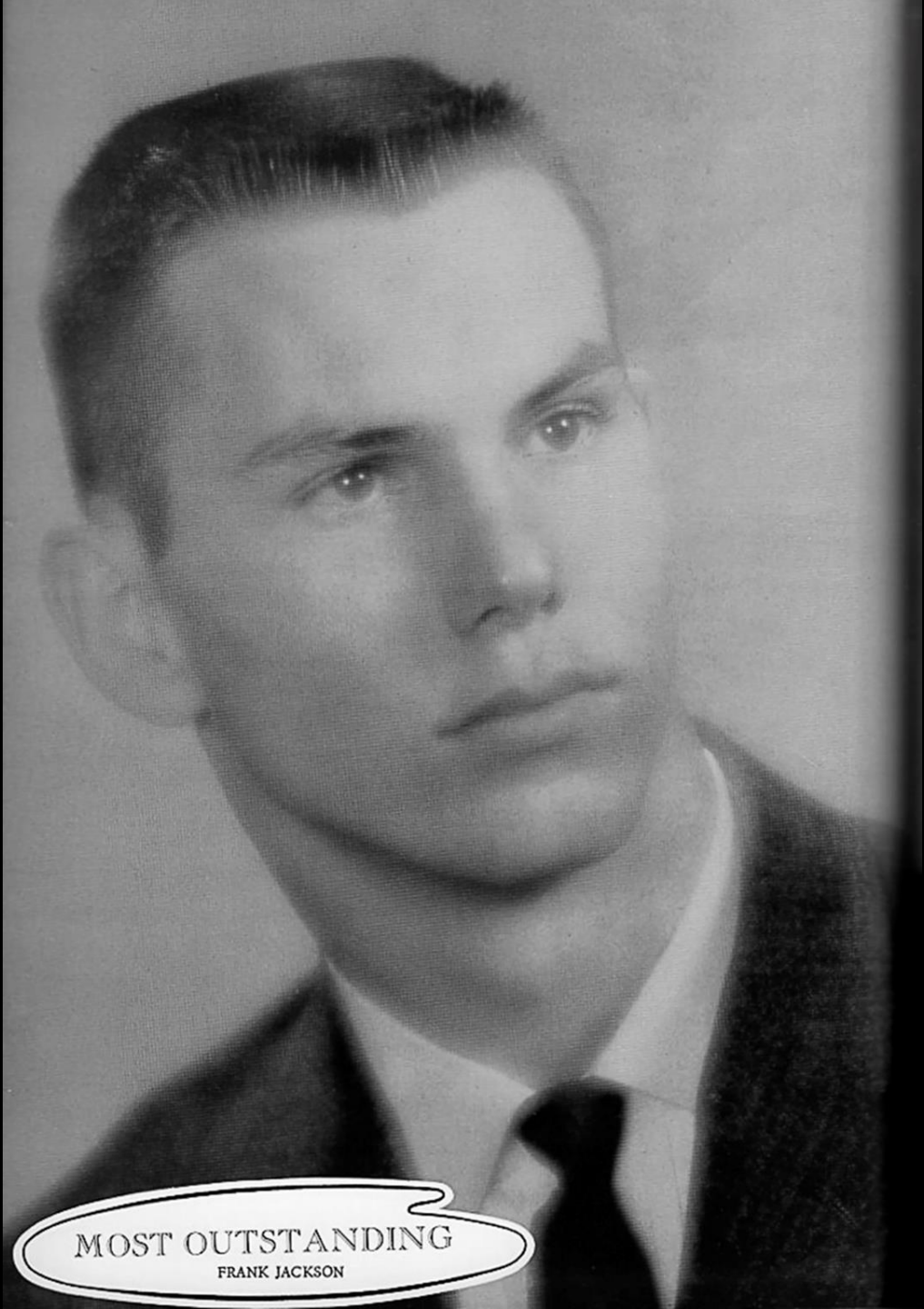


MOST HANDSOME

MIKE YOUNG



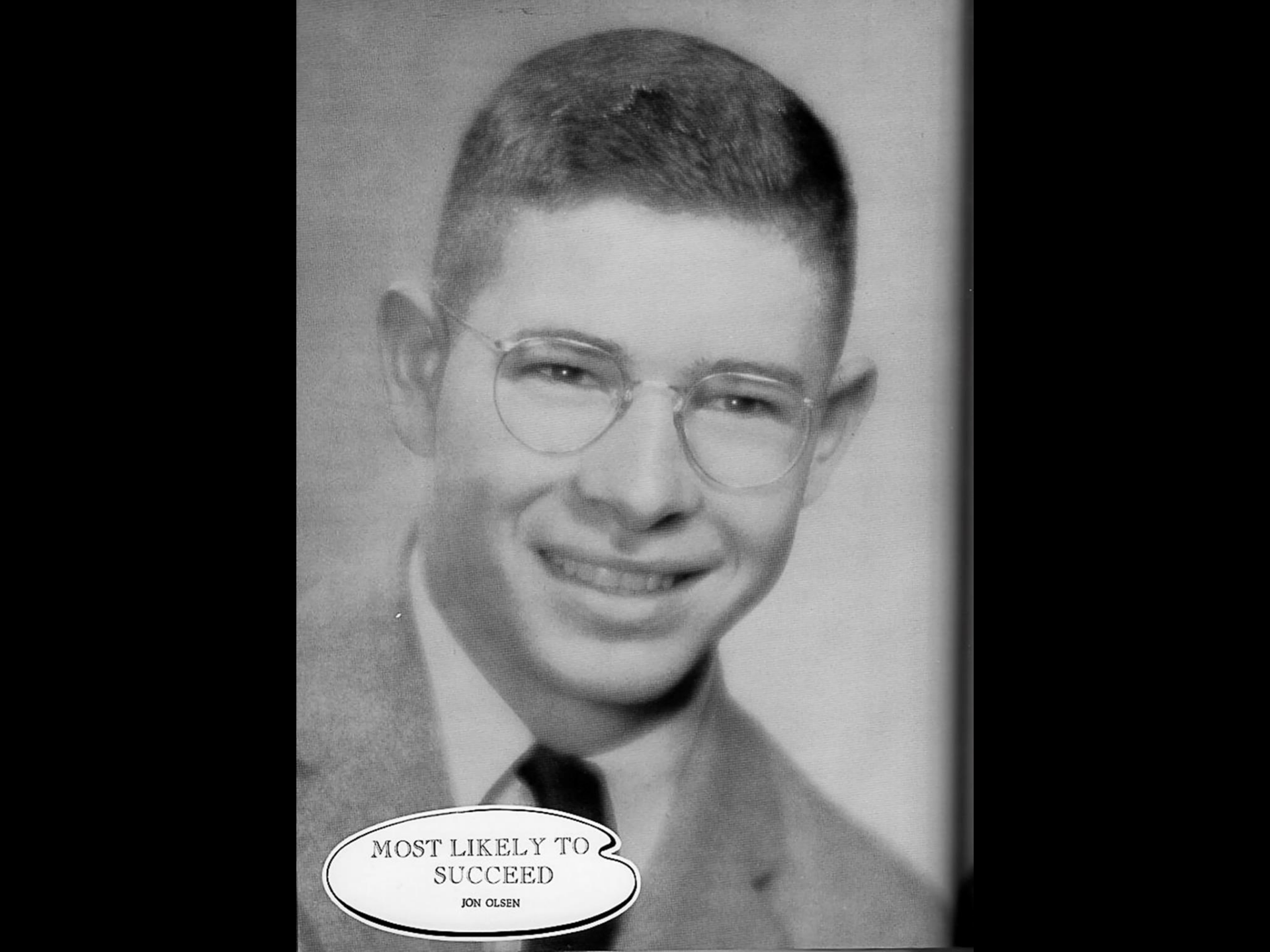
MOST BEAUTIFUL
NELLIE PARK



MOST OUTSTANDING
FRANK JACKSON



MOST OUTSTANDING
JOSEPHINE WELDER



MOST LIKELY TO
SUCCEED

JON OLSEN



MOST LIKELY TO
SUCCEED

BETTY GILL



MOST
ATHLETIC

J. D. FISH

NOMINEES



Gary Mansker
Junior Favorite



Thad Moore
Sophomore Favorite



Sharon Mussett
Freshman Favorite



Jon Olsen
Most Likely to Succeed



Nellie Park
Most Beautiful



Henry Ramirez
Freshman Favorite



Jimmy Tanner
Freshman Favorite



Joe Trlica
Junior Favorite



Jane Turner
Sophomore Favorite



Judy Turner
Sophomore Favorite



Jimmy Turnipseede
Sophomore Favorite



Bill Walker
Junior Favorite



Sandra Walker
Most Beautiful,
All-School Favorite



Josephine Welder
Senior Favorite,
Most Likely to Succeed,
Most Outstanding,
All-School Favorite



Eddie Wicker
Senior Favorite,
All-School Favorite



Rosemary Wilson
Most Likely to Succeed



Esther Wright
Junior Favorite



Mike Young
Most Handsome

NOMINEES



Diane Abbott
Sophomore Favorite



Mary Temple Bennett
Senior Favorite,
Most Outstanding,
All-School Favorite



Jimmy Bertram
Most Handsome



George Brin
Sophomore Favorite



Boggie Caffall
Senior Favorite,
Most Handsome,
Most Outstanding,
All-School Favorite



Patsy Chamrod
Senior Favorite,
Most Beautiful,
All-School Favorite



Martha Jo Dorsey
Junior Favorite



Tommy Dunn
Junior Favorite



J. D. Fish
Most Athletic



Betty Gill
Most Likely to
Succeed, Most
Outstanding



Sandra Hamm
Junior Favorite



Paul Hernandez
Junior Favorite



John Hughes
Senior Favorite,
Most Athletic,
Most Likely to Suc-
ceed, Most Out-
standing, All-School
Favorite



Mary Jane Hughes
Freshman Favorite



Larry Hunter
Freshman Favorite



Frank Jackson
Most Likely to Suc-
ceed, Most Out-
standing



Barbara Lazenby
Freshman Favorite



Jimmy Lundschen
Most Athletic

MEMORIES

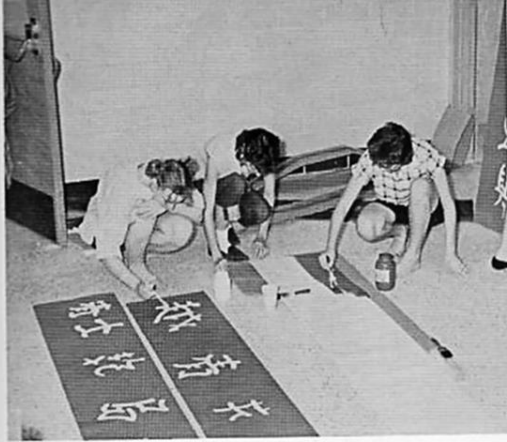
OF

LAST

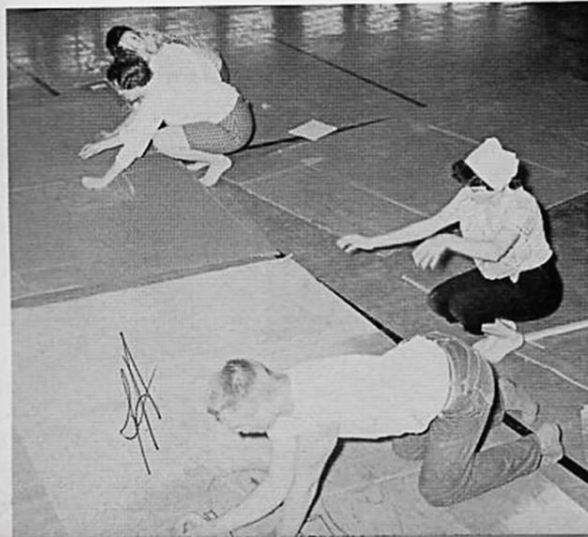
SPRING



JUNIOR- PROM



"Prom time" gaily, excitement and laughter. The prom, an event of great anticipation, is the biggest social event of high school life; and to the seniors it is a final remembrance of high school days as they dance to the music of the Benny Prause Orchestra in the atmosphere of "Evening in the Orient."



SENIOR
1958



Martha Jo Dorsey and Gary Mansker entertained with a humorous skit entitled "Oriental Courtship."

Seated at the head table were faculty members and special guests.





Entrance to the prom was a vine-covered bridge over a lighted pond of goldfish.



Guests listen to the orchestra and watch others dance.



The prom is over for the Seniors, but for the Juniors the dreaded task of cleaning up and taking down the decorations must be faced.



The day after the big night, the beginning of a year's anticipation for the 1959 Prom.

SPRING SPORTS

TRACK AND BASEBALL



FIRST ROW: Gary Mansker, Luz Alanís, Don Donahoo, Bennie Cantu, Mario Perez, Tommy Wrinkle, Bobby Wrinkle. SECOND ROW: Jasper Clay, Homer Soliz, Terry Noble, Ronnie Pringle, J. D. Fish, Paul Hernandez, Slick Love, Johnny Gold. THIRD ROW: Coach Brooks Dozier, Trino Martinez, John Hughes, Jimmy Lundschen, Wilson Ray, Coaches Dave Green and Tex Kassen.



FIRST ROW: Cerildo Alonzo, Bonn Tanner, Paul Hernandez, Gary Mansker, Philip Finke, Ray Granada, Bob Goynes, Jimmy Bertram, Walter Kelley, Jimmy Lundschen. SECOND ROW: Manager Rex Smith, Freddy Moreno, Homer Soliz, Rudy Soliz, Cheo Sandoval, John Hughes, Doug Hutchins, Louis Vela, Coach Dave Green.

F.H.A.

ANNUAL MOTHER-DAUGHTER BANQUET



The attractive Buffet Dinner was a success.

President Sue Routh presents corsages to Mrs. Muennink and Mrs. West.



President-elect June Barber outlines F. H. A. purposes.





Sadie Hawkins Day
Surprise Box Auction



Entertainment?



Sadie Sack Race

AWARDS

ASSEMBLY



Linda Weeks is presented the John Philip Sousa Award by Mr. Felts.

Library club members receive honors



The '57-'58 Student Council

Margaret Hatcher and Judy Burgoon present Mr. McCoy with the Girls' District Basketball Championship Trophy.



John Hughes and Robert Morse are awarded English medals by Mr. McCoy.

Pat Thompson received an award for being an outstanding Spanish student.

Homer Soliz was voted the most outstanding football player for the year 1957.





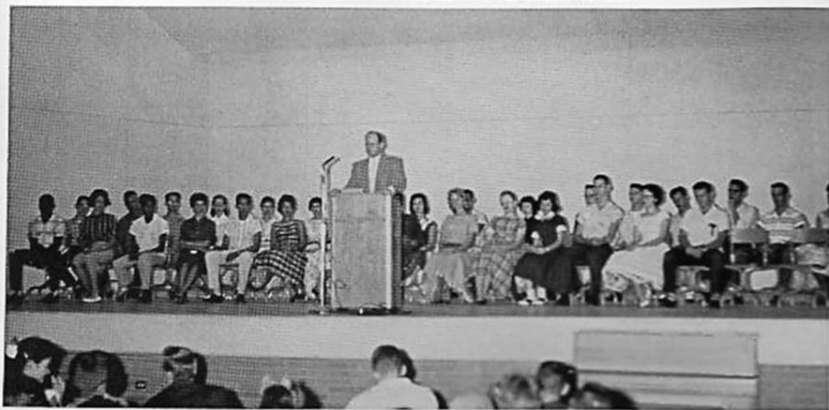
John Kachold was honored for having the highest average in high school for the year of 1957-58.



Charles Brown is honored as most outstanding band student.



Margaret Hatcher was voted most outstanding girl for 1957-58.



Mr. McCoy and honored students.

THE LAST ASSEMBLY

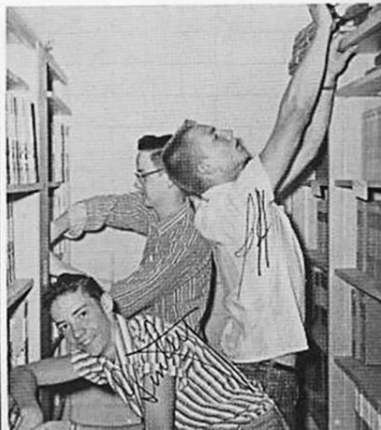


At the last assembly of the school year, the Student Body and Faculty honor Miss Irene Olin who is retiring after more than 30 years in the teaching profession.



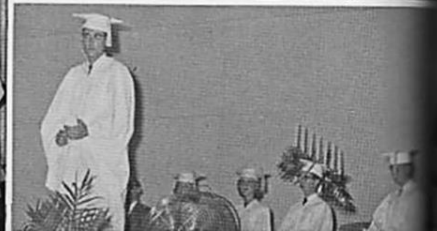
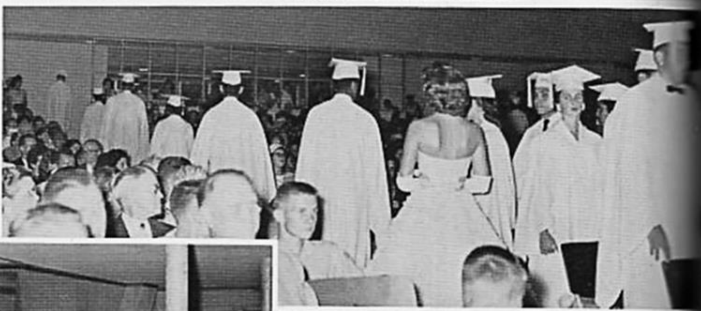
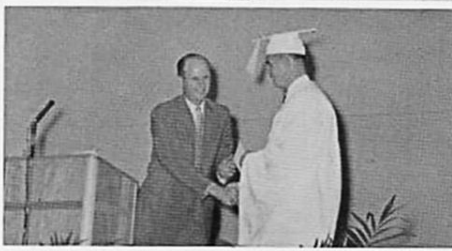


The end of school is here and everyone is busy turning in books and receiving deposits on the locks "we all used."



GRADUATION!

A day students work toward-
A day filled with memories.





GLYNIS !!!

UGH

I DARE YOU !!

THE WON'T HELP ME

83-81 89 82-7 86

THE LINEUP !

HANGOVER

LA NELLE !

CENSORED

MY SECRET.. BLEACH !!

TWO BITS?

CATCH

PARIS FASHIONS?

SHIVE?

888 BASH DEBILTON



LOOK WHO'S WORKING!!



Gr-r-r-r-r



MIXED-UP!!



...and I'll raise it!!

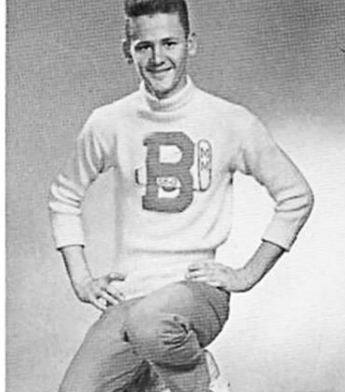


Blisters?

SPORTS

Well the year was another
great year but I'm looking
forward to next year. Here
really going to have a
blast! — just wait —
now on I'm a reformed
juvenile — no more
students it hope. I also
change too, you know
fragile nerves! —
calm! —
Don't blame
me

MARTHA JO DORSEY



MIKE McWHORTER

JANE TURNER



JONES HIGH

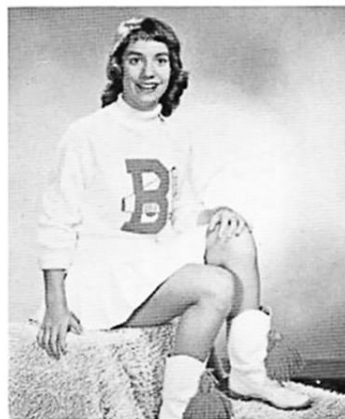


CHEERLEADERS

MARY TEMPLE BENNETT
Head Cheerleader



ESTHER WRIGHT



DIANE ABBOTT



VICKY ROWLAND



ARNETTE LAUGHTER



BETTY JEAN GILL



GLYNIS SMITH

M
A
J
O
R
E
T
T
E
S



CONWAY YOUNT
Drum Major

D
R
U
M

M
A
J
O
R

JACKIE ANDERSON

BEA BITTNER

TOMI CLYDE HUTCHINS



FOOTBALL SWEETHEART



SANDRA WALKER





FOOTBALL "A" TEAM

TOP ROW: Coach Tex Kassen, Line Coach Dave Green, Boggie Caffall, Ben Cantu, Joe Garcia, Mike Young, David Lawrence, Bonn Tanner, Luz Alanis, Manager Ross Huegler, Manager Joe Plachy. MIDDLE ROW: J. D. Fish, Bobby Wrinkle, Pillar De Leon, Jimmy Lundschen, James Elliott, Wilson Ray, Frank Jackson, John Hughes, Clay Eissler, Don Vargas. BOTTOM ROW: Gary Mansker, Jimmy Bertram, Paul Hernandez, Mario Perez, David Jones, Ed Wicker, Trino Martinez.

1958 FOOTBALL SCORES

Beeville	14	Devine	8
Beeville	6	Refugio	6
Beeville	30	New Braunfels	0
Beeville	18	Laredo	20
Beeville	24	Sinton	16
Beeville	27	Falfurias	12
Beeville	42	Cuero	12
Beeville	36	Robstown	0
Beeville	6	Kingsville	14
Beeville	20	Port Lavaca	6

Handwritten notes:
 Aunt Jean - Thanks for every thing you have done for helping me get back to school
 11/5/59
 Love
 P.B. 7/1/61



COACHES

Don Scott, Vernon Ullmann, Tex Kassen, Dave Green



JIMMY LUNDCHEN
2 Years
End
All-District



BOBBY WRINKLE
2 Years
End



BOGGIE CAFFALL
2 Years
Tackle



FRANK JACKSON
2 Years
Tackle
All-District



BEN CANTU
1 Year
Guard



DAVID LAWRENCE
2 Years
Guard
All-District



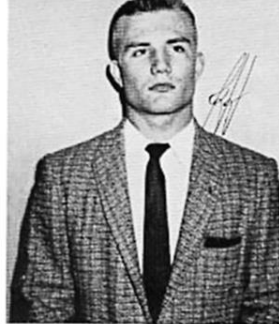
MIKE YOUNG
1 Year
Guard



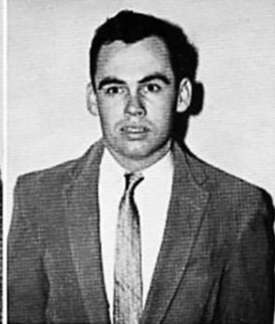
JIMMY BERTRAM
2 Years
Back



J. D. FISH
2 Years
Back



JOHN HUGHES
3 Years
Back
All-District



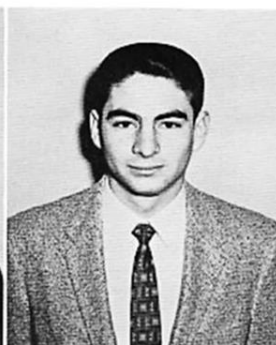
DAVID JONES
2 Years
Back



TRINO MARTINEZ
1 Year
Back



ED WICKER
3 Years
Back



Luz Alanis
LUZ ALANIS
2 Years
Center
All-District



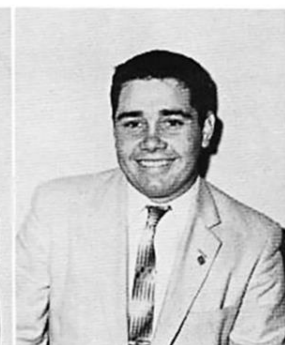
BONN TANNER
1 Year
Center



JOE GARCIA
1 Year
Guard
All-District



PAUL HERNANDEZ
1 Year
Back
All-District



JAMES ELLIOTT
1 Year
Tackle



JIMMY TURNIPSEEDE
1 Year
Back



GARY MANSKER
Back



MARIO PEREZ
Back



WILSON RAY
Tackle



PILLAR DE LEON
End



DON VARGUS
Tackle



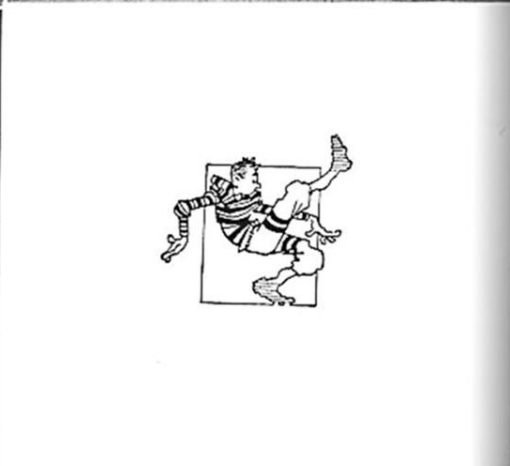
JEFF GOSS
2 Years
Manager

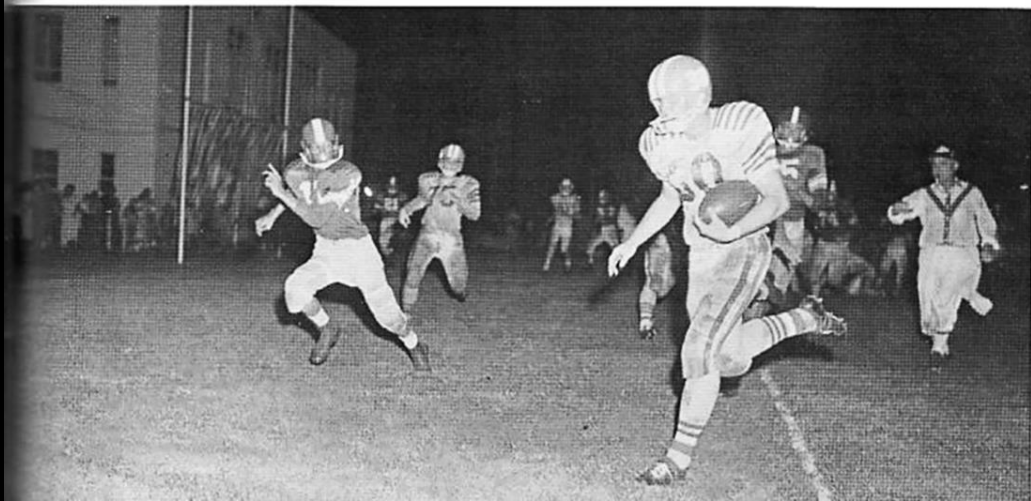
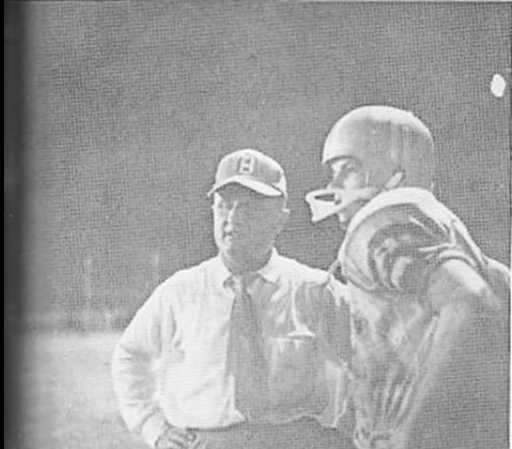


JOE PLACHY
1 Year
Manager



HERBIE ROTH LISBERGER
1 Year
Trainer





BASKETBALL SWEETHEART



MARTHA JO DORSEY





BASKETBALL "A" TEAM

TOP ROW: Herbie Rothlisberger, Gary Mansker, Luz Alanis, George Love, John Hughes, Brooks Arnold, Coach Don Scott. BOTTOM ROW: Paul Santellana, Trino Martinez, Bonn Tanner, Jimmy Lundschen, David Jones, Jimmy Bertram, Paul Hernandez.

1959 BASKETBALL SCORES

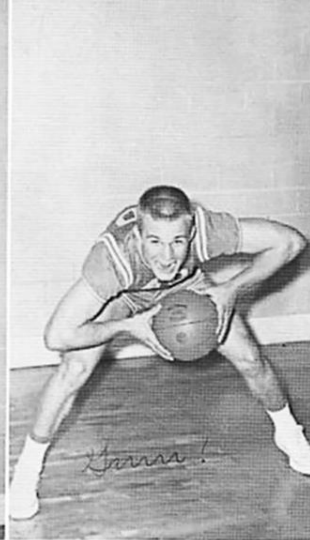
Beeville	36	South San Antonio	71
Beeville	40	Ingleside	59
Beeville	44	Laredo	58
Beeville	54	Refugio	42
Beeville	51	Cuero	33
Beeville	49	Aransas Pass	25
Beeville	31	South San Antonio	60
Beeville	53	Kingsville	63
Beeville	48	Port Lavaca	47
Beeville	41	Robstown	51
Beeville	46	St. Joseph	45
Beeville	49	Cuero	41
Beeville	37	Kingsville	54
Beeville	43	Port Lavaca	42
Beeville	53	Robstown	71



BROOKS ARNOLD
Center



GEORGE LOVE
Forward or Guard

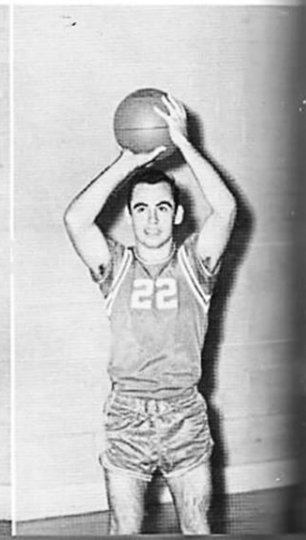


JOHN HUGHES
Forward

JIMMY BERTRAM
Guard

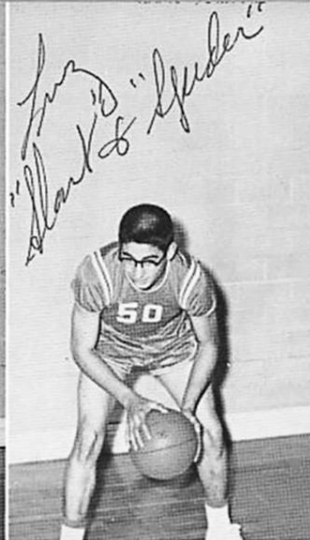
TRINO MARTINEZ
Forward

DAVID JONES
Guard





JIMMY LUNDSCHEN
Guard



LUZ ALANIS
Center or Forward

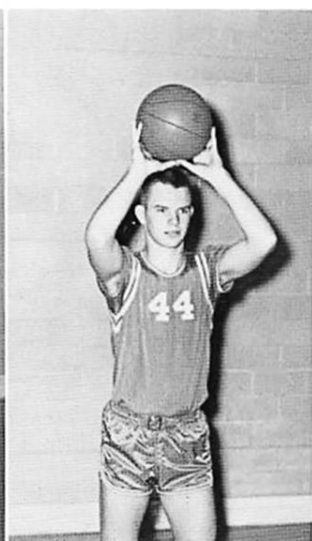


PAUL HERNANDEZ
Guard

GARY MANSKER
Forward



BONN TANNER
Guard





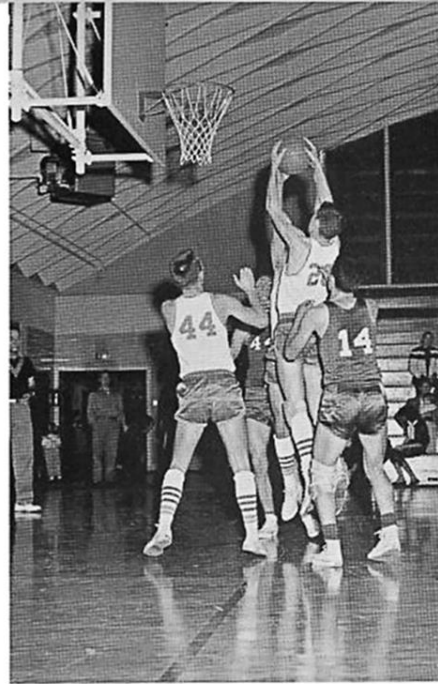
BASKETBALL "B" TEAM

TOP ROW: Paul Santellana, Kenneth Hinderman, Claude Gotthardt, Fred Cox, Joel Case, Coach Don Scott. BOTTOM ROW: Sam Tharp, John Nowlin, Henry Medina, Ralph McCraig, Beaver Rider.

TOP ROW: Gerald Garcia, Jimmy Tanner, Buddy Brown, Monty Dickenson. BOTTOM ROW: Lupe Trevino, Bob Hudson, Glen Hogan, Coach Vernon Ullmann.

FRESHMAN TEAM

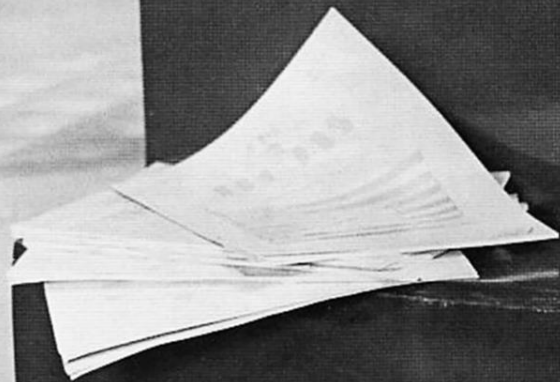
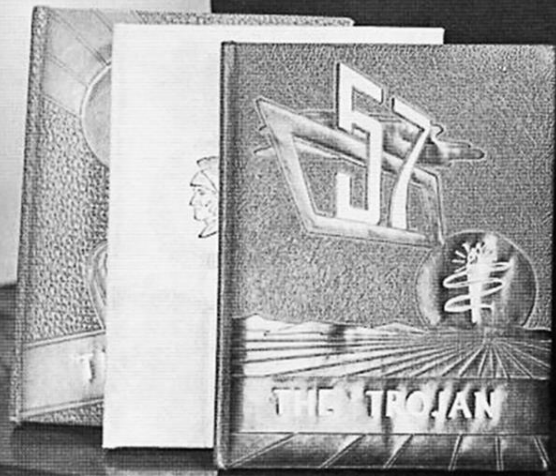




Start



ORGANIZATIONS



STUDENT COUNCIL



President	-BOGGIE CAFFALL
Vice President	JIMMY BERTRAM
Recording Secretary	- JOSEPHINE WELDER
Corresponding Secretary	MARY TEMPLE BENNETT
Treasurer	BETTY JEAN GILL
Dis. Secretary-Treasurer	PATSY CHAMRAD
Parliamentarian	- GARY MANSKER
Historian	-JANE TURNER

BACK ROW, left to right: Boggie Caffall, Jimmy Bertram. FOURTH ROW: Gary Mansker, Luz Alaniz, Benny Cantu, Josephine Welder, Betty Gill, Mr. Elam. THIRD ROW: Vicky Rowland, Martha Jo Dorsey, Grady O'Shields, Mary Temple Bennett, Patsy Chamrad. SECOND ROW: Esther Wright, Janet Taylor, Phyllis McGill, Judy Turner, Sharon Mussett, Henry Rameriz, Hortencia Naranjo. FRONT ROW: Jane Turner, Joan Hebert, Carol Yount, Mary Jane Hughes,



NATIONAL HONOR SOCIETY



President	-	JOSEPHINE WELDER
Vice President	-	FRANK JACKSON
Secretary	-	BETTY JEAN GILL

BACK ROW, left to right: Boggie Caffall, Sandra Walker, Jackie Winfrey, Mike Young, Bonn Tanner. THIRD ROW: Sandra Herod, Kay Slay, Mary Temple Bennett, Norma Pieper, Mary Esther Youngblood, Jon Olsen, John Katchold, Martha Jo Dorsey, John Hughes. SECOND ROW: David Jones, Virgean Baumann, Gary Mansker, Jackie Anderson, Jane Baird, Rosemary Wilson, Conway Yount, Richard Baker, Porter Sparkman. FIRST ROW: Bobby Winkle, Betty Jean Gill, Frank Jackson, Josephine Welder, Bennie Cantu, Jimmy Bertram, Bea Bitmer, Luz Alanis, Arnette Laughter, Judy Lawson.



TROJAN STAFF

Editor-Chief JOHN HUGHES

Associate Editor CHARLES BROWN

News Editor GENTRY STEELE,
BOBBY DAVIS

Sports CURTIS VOSS, BONN TANNER,
MARY LOUISE EVERETT

Feature Editor KAREN VAN ALLEN,
JANE BAIRD

Production - BOGGIE CAFFALL, LUZ
ALANIS

Make-Up WALTER BOENIG, PAT
McMILLION, PORTER SPARKMAN,
MARTHA JO DORSEY

Copy Editor MARY TEMPLE BENNETT,
KAY SLAY *you left me out*

Circulation LUPE FLORES, DOLORES
MARTINEZ

Art CLAUDIA NELSON, HELEN RAMIREZ,
SHERRY ARNETT, SANDRA WALKER

Business Manager ARNETTE LAUGHTER

Publicity - KATHLEEN BERSEN, RUTH
BURRISS

Advisor JEAN DUGAT

Reporters, Johnny Bell, Bobby Fraser, Joe Garcia, Sarah Kay Handy, Joan Hebert,
Paul Hernandez, Santos Longoria, Hore Luna, Jayne Lundschen, Trino Martinez, Judy
Neal, Johnny Nelson, Sam Tharp, Pat Thompson, Jane Turner, Judy Turner, Gerald
Workman, Kathryn Wyrick.

THESPIANS



President -
Vice President
Secretary
Treasurer -
Reporter
Historian
Recording Scribe

FRANK JACKSON
NELLIE PARK
ESTHER WRIGHT
- BOGGIE CAFFALL
MARY TEMPLE BENNETT
JUNE BARBER
- PAT McMILLION

BACK ROW, left to right: Clay Eissler, Grady O'Shields, Porter Sparkman, Bill Tucker, Don Sugarek, Frank Jackson, SECOND ROW: Jon Olsen, Boggie Caffall, Gentry Steel, Roger Prewitt, Nellie Parks, Pat McMillion, Josephine Welder. FIRST ROW: Sandra Walker, June Barber, Elizabeth Helvenston.

LETTERMAN'S CLUB



BACK ROW, left to right: Luz Alanis, Jeff Goss, Jimmy Lundchen, Boggie Caffall, Mike Young, Paul Hernandez, Trino Martinez, Bennie Cantu, Bonn Tanner. FOURTH ROW: Herbie Rothlisberger, James Elliott, Joe Plachy, Joe Garcia, Jimmy Turnipseed. THIRD ROW: Frank Jackson, George Love, Gary Mansker. SECOND ROW: Bobby Winkle, John Hughes, David Jones. FIRST ROW: Coach Kassen, Jimmy Bertram, Eddie Wicker, J. D. Fish, David Lawrence.

President
Vice President
Treasurer
Reporter
Sergeant-at-Arms

JIMMY BERTRAM
DAVID LAWRENCE
- EDDIE WICKER
- J. D. FISH
JEFF GOSS

CHORAL



BACK ROW, left to right: George Crosley, Bill Walker, Jerard Thornton, Albertina Ochoa, Lupe Flores, Paulin Rodriguez, Florence Blackwell, Gloria Bess, Annie Callis, Lupe Mendez. SECOND ROW: Alicia Sims, Mae Ola Moore, Dolores Dawson, Nadine Smith, Hilaria Perez, Susan Dougherty, Joan Bohmfalk, Barbara Everett, Lois Sanders, Leodanda Lozano, Helen Ramirez, Josie De Leon, Teresa Medina, Evangelina Baldillez, Delia Villareal. FIRST ROW: Sylvia Lozano, Elsa Suniga, Santos Longoria, Ruth Austen, Lena Johnson, Ida Lee Bell, Nona Sue McKinney, Kathym Wyrick, Barbara Smith, Annie Paredez, Margie Longoria, Jeanette Vaught, Angelita Perez, Cherri Kenison, Shirley Elseberry, Mary Esther Youngblood.

President
Vice President
Secretary
Librarian
Roberian -
Reporter -
Business Manager

JOAN BOHMFALK
BILL WALKER
TERESA MEDINA
- SANTOS LONGORIA
- SUZ MCKINNEY
HELEN RAMIREZ
IDA LEE BELL

BAND SWEETHEART



BEA BITTNER





BAND

FIRST ROW, left to right: Betty Gill, Bea Bittner, Conway Yount, Tomi Clyde Hutchins, Jackie Anderson. SECOND ROW: Jackie Winfrey, Kay Slay, Barbara Brown, Reba Youngblood, Mary Esther Youngblood, LaNelle Boenig, Joe Trlica, Gayle Rosebrock, Shirley Athey. THIRD ROW: Virgean Baumann, Jody Williamson, Barbara Kennedy, Vera Nell Everett, Sharon Mussett, Stanley Ann Anderson, Linda Turner, Claudia Nelson, Adam Cooley, Sidney Sims, Carol Yount, Gene Stephenson, Martha Bowes, Margaret Griffith. FOURTH ROW: Norma Pieper, Sandra Mitchell, Jane Searcy, Billie Jean Horton, Janet L'Heureux, Salura Owens, Josephine Medina, Dorothy Baltazar, Margie Ybanez, Mary Jane Moreno, Phillip Finke, Robert Ball, John West, Erenio Petez, David Carlson, Robert Blankenship, Maynard Green, Timothy Bowes, Sandra Foster, Johnny Nelson, Mike McWhorter, Walter Boenig. FIFTH ROW: Judy Bowman, Carolyn Love, Mary Ann Geisler, Phillip Terry, Rudy Ramirez, Manuel Trevino, Bobby Fraser, Pat McWhorter, Clay Eissler, Bob Butts, Charles Brown. BACK ROW: Frank Jackson, Richard Espinosa, Gerald Workman, Paul Stephenson, Chester Everett, Gentry Steele.

President
Vice President
Secretary
Treasurer
Business Manager
Equipment Manager
Student Conductor
Drum Major

PHILLIP FINKE
WALTER BOENIG
- BETTY JEAN GILL
- VIRGEAN BAUMANN
NORMA PIEPER
GERALD WORKMAN
CHARLES BROWN
CONWAY YOUNT

KEY CLUB SWEETHEART



JANE TURNER



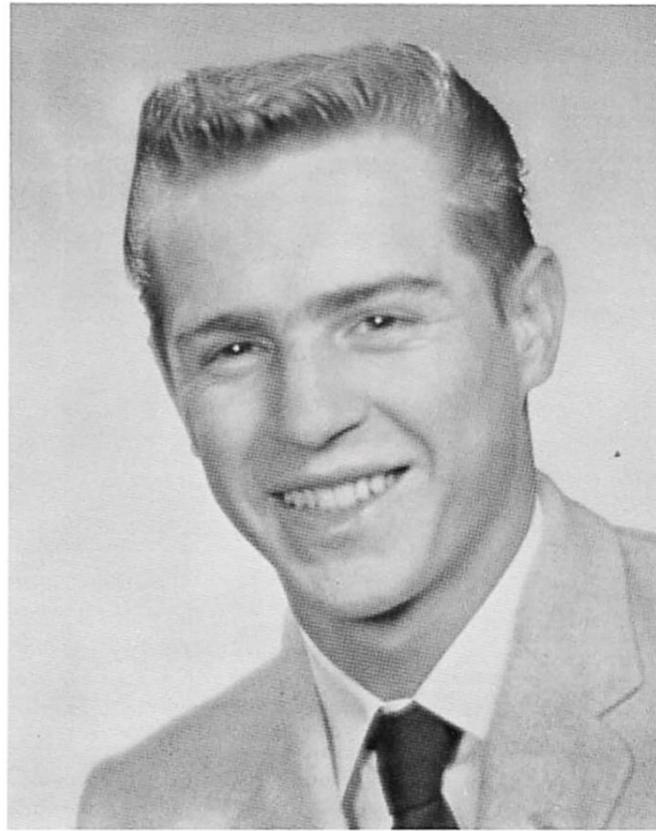


KEY CLUB

President	-	BILL WALKER
Vice President	-	GRADY O'SHIELDS
Secretary-Treasurer	-	MIKE HITT
Lieutenant Governor Division IV	-	PHILLIP FINKE

FRONT ROW, left to right: Jimmy Jackson, Robert Butts, Mike Hitt, Bill Walker, Grady O'Shields, Frank Jackson, Dan Douglas. BACK ROW, left to right: Clay Eissler, Conway Yount, Gentry Steele, Mike McWhorter. NOT SHOWN: Phillip Finke.

F.H.A. BEAU



BOBBY DAVIS





F.H.A.

President: JUNE BARBER
 First Vice President: LOIS SANDERS
 Second Vice President: ALICIA HAM
 Third Vice President: JOAN BOHMFALK
 Corresponding Secretary: JOAN BROWN
 Recording Secretary: JUDY LAWSON
 Treasurer: GLYNIS SMITH
 Historian: BETTY KOENIG
 Parliamentarian: SANDRA HEROD
 Reporter: SANDRA HAMM

MOTTO:
 Toward New Horizons

FLOWER:
 Red Rose

COLORS:
 Red and White

MEMBERS: Jeanette Alexander, Jackie Anderson, Rose Marie Anderson, June Barber, Mary Bergara, Joan Bohmfalk, Mary Ann Borchers, Ann Brown, Joan Brown, Barbara Burns, Erlinda Chavarilla, Mary Chesshir, Carol Dement, Martha Dovbrava, Dorothy Dunn, Margaret Griffeth, Alicia Ham, Sandra Hamm, Kathy Harris, Sarah Harris, Alene Hatcher, Sandra Herod, Mary Jane Hughes, Sharon Ivey, Betty Koenig, Barbara Jones, Judy Lawson, Leodanda Lozano, Sylvia Lozano, Ingrid Maier, Joyce McMahon, Josephine Medina, Jan Moore, Margaret Peter, Gayle Rosebrock, Lois Sanders, Jane Searcy, Bev Shepardson, Alicia Sims, Vivian Snor, Glynis Smith, Margaret Smith, Joy Stover, Rosie Sylva, Patricia Ann Taylor, Mary Jane Trial, Linda Turner, Janice Vaught, Jeanette Vaught, Carol Wagner, Mary Lou West, Viola Wright, Diane Williams, Harriet Younts.

F.F.A. SWEETHEART



PATTI DAVIS





F. F. A.

President: ALBERT WRIGHT

Treasurer: EDDIE WICKER

Vice President: JIMMY DORSEY

Reporter: WALTER KELLY

Secretary: BOBBY DAVIS

Parliamentarian: JEFF GOSS

Sentinel: REX SMITH

FIRST ROW, left to right: Lesley Henery, Robert Baylor, Bobby Davis, Jimmy Dorsey, Albert Wright, Eddie Wicker, Walter Kelly, Rex Smith, SECOND ROW: Freddie Samudia, Ernio Perez, Gordon Searcy, George Matocha, Preston Herbert, Walter Wright, Benny Ford, Henry Harris, Martin Miller, Max Range, Elmer Oatman, Mr. Hatcher, THIRD ROW: Gilbert Arrendondo, Buddy Brown, Michael Sturm, Tommy Winkle, Don Donohoo, Jeff Goss, Bill Fowler, Neville Edgar, Sammy Wolfe, FOURTH ROW: Porky Smith, Aubrey Martin, Johnny Perez, Arvel Davis, Lee Barks, FIFTH ROW: Jack Glover, Tip O'Neil, Rubin Reyes, Tommy O'Neil, Bill Newsom, Jerry Thomas.

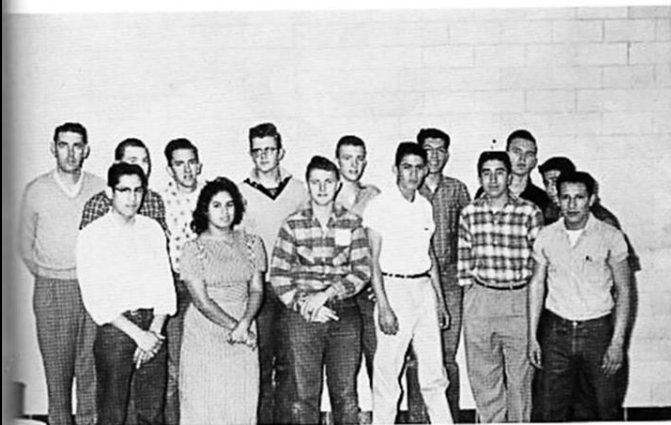
D.E. CLUB SWEETHEART



BARBARA PAYNE



D.E. CLUBS



D.E.
I.



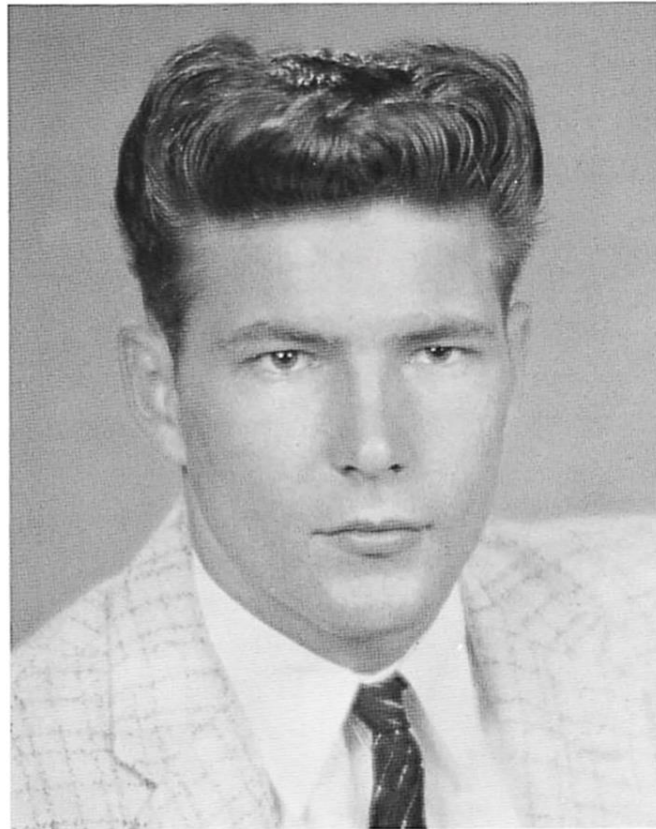
D.E.
II.

- I. FRONT ROW, left to right: Louis Contreras, Teresa Rodriguez, Lanny Mills, Rey Ramos, Alex Camacho, Mike Cortez. BACK ROW: Sponsor, Mr. Kirkpatrick, Grady O'Shields, H. L. Taylor, George Keller, Wayne Rider, Abe Garcia, R. J. Hendrickson, Pete Soliz.
- II. FRONT ROW, left to right: Joyce McMahon, Joan Day, Barbara Patty, Barbara Payne, Martha Saenz, Kathryn Hopkins. SECOND ROW: Roger Prewitt, Jimmy Baltazar, Richard Naranjo, Johnny Alexander, Rene Rodriguez, Harold Reese, Freddy Hector, James Holton, Gene Thurmond, Johnny Gold, Charlie Wrinkle, Contrado Garcia, Domingo Santellana, Sponsor, Mr. Kirkpatrick.

President: LOUIS CONTRERAS
Vice President: R. J. HENDRICKSON

Secretary: BARBARA PATTY
Reporter: BARBARA PAYNE

SECRETARIAL ARTS BEAU



BILL TUCKER



SECRETARIAL ARTS



BACK ROW, left to right: Patsy Chamrad, Glynis Smith, Linda Roach, Carol Campbell, Josephine Welder, Lupe Flores, Elida Velasquez, Carol Shornake, Evelyn Holton. THIRD ROW: Dorothy Dunn, Esther Wright, Virgean Baumann, Renate Maier, Yvonne McGregor, Dorothy Hardeman, Judy Lawson, Willadean Leverman, Frieda Hartzendorf, Sophie Espinosa. SECOND ROW: Mrs. Coalson, Bea Bittner, June Barber, Joan Brown, Sandra Herod, Diane Williams, Mary Esther Youngblood, Sharon Brundrett, Alicia Ham. FIRST ROW: Palmira Rodriguez, Nellie Park, Betty Jean Gill, Sobeida Velasquez, Evangelina Baldillez, Teresa Medina, Margie Longoria.

President -	-	-	SANDRA HEROD
Vice President			DIANE WILLIAMS
Secretary-Treasurer			SHARON BRUNDRETT
Reporter		-	JOAN BROWN
Parliamentarian			MARY YOUNGBLOOD

INDUSTRIAL ARTS



JACKIE ANDERSON



INDUSTRIAL ARTS CLUB

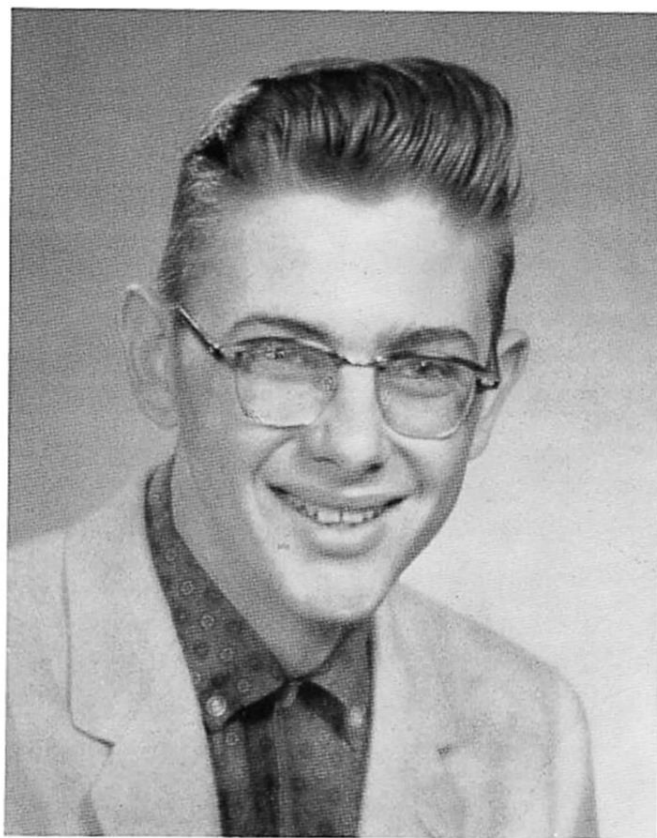


BACK ROW, left to right: Jerry Foster, Rex Smith, Trino Martinez, Jack Glover, Clay Eisseler, Brooks Arnold, Richard Baker. THIRD ROW: Larry Berecky, Bill Tucker, Willadean Leverman, Yvonne McGregor, George Love, Mike Young. SECOND ROW: Mr. Henshal, Mike Huser, Harold Davis, Jackie Anderson, Mike McWhorter, Doretha Wright, Sandra Walker. FRONT ROW: John McCurdy, Mike Hitt, J. D. Fish, Benny Cantu, Jimmy Bertram, Johnny Turner, Ralph Nelson, Herbie Rothsberger.

President
Vice President
Secretary
Treasurer

BROOKS ARNOLD
R. J. HENDRICKSON
SANDRA WALKER
GEORGE LOVE

LIBRARY CLUB BEAU



BILL WALKER





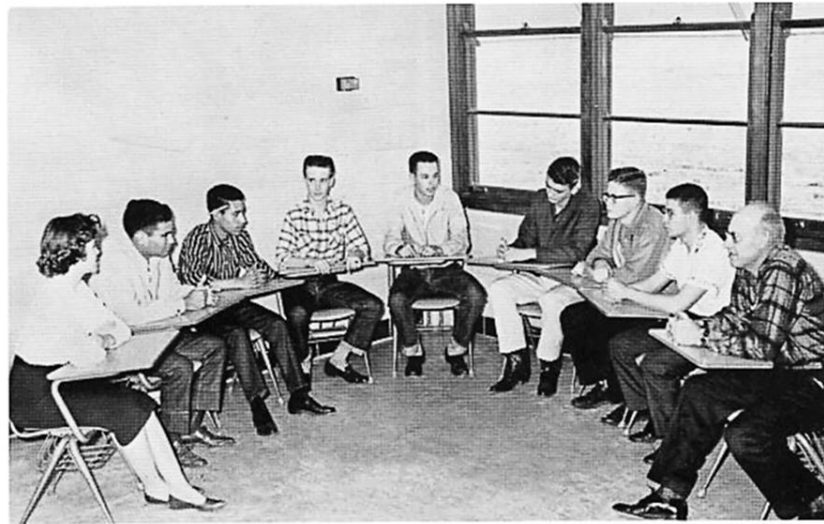
LIBRARY CLUB

President
 Vice President
 Secretary
 Treasurer

MARY YOUNGBLOOD
 ARNETTE LAUGHTER
 NELLIE PARK
 SHIRLEY ATHEY

MEMBERS: BACK ROW, left to right: Carolyn Love, Shirley Athey, Arnette Laughter, Karen Van Allen, Josephine Welder, Carol Shomake, Reba Youngblood, Elizabeth Helvenston, Sandra Hamm, Joan Brown, Barbara Butns, Mary Youngblood, Rosemary Regan, Kay Slay, CENTER ROW, left to right: Rosemarie Anderson, Carol Dement, Katherine Wyrick, Myra Odem, Harriet Younts, Pat Taylor, Nellie Park, Stanley Ann Anderson, Betty Koenig, Kathleen Bernsen, FRONT ROW, left to right: Mary Jane Hughes, Shaton Mussett, Carol Yount, Mary Lou Hunter, Judy Neill, NOT SHOWN: Patsy Chamrod, Jane Baird, Mrs. West, Librarian.

SCIENCE CLUB



Left to right: Rosemary Wilson, Serafin Leal, Gilbert Guerro, Mike Hitt, Tommy Borchers, John Katchold, James Pieper, Jon Olsen, Mr. Hill.

OFFICERS

JON OLSEN
ROSEMARY WILSON
JOHN KATCHOLD

President
- Vice President
Secretary-Treasurer

LATIN CLUB



President
Vice President
Corresponding Secretary
Recording Secretary
Treasurer
Parliamentarian

- JAMES PIEPER
JOAN HERBERT
- JUDY NEIL
DOROTHY DUNN
KAY SLAY
JON OLSEN

FRONT ROW, left to right: Barbara Brown, Angelita Perez, Martha Jo Dotsey, Joy Pogue, Cherri Kenison, Jody Williams, Judy O'Neil, Sharon Mussett, Jill Duffy, Gayle Rosebrock, Barbara Paulson, Sarah Kay Handy, Jayne Lundchen, Sarah Harris, Jane Turner, Jon Olsen. MIDDLE ROW: Mary Lou Hunter, Carol Yount, Kay Slay, Judy Turner, Sandra Mitchell, Joan Hebert, Jackie Anderson, Lois Pruski, Ruth Burriss. BACK ROW: Mrs. Iola Olsen, Jack Burns, Tommy Dunn, James Elliot, Mike Hitt, Manuel Zapata, Dorothy Dunn, Jerard Thornton, John Katchold, Wilson Ray, David Brummett, James Pieper.

F.T.A.



President
Vice President
Secretary
Treasurer

SHIRLEY ATHEY
JOY POGUE
SANDRA WALKER
PATTI DAVIS

BACK ROW, left to right: Claudia Nelson, Carol Dement, Kathryn Wyrick, Reba Youngblood, Jackie Anderson, Shirley Athey, SECOND ROW: Linda Turner, Judy Boeman, Katherine Boemer, Patsy Moreno, Julia Moreno, Barbara Brown, Carol Wagner, Pat Thompson, FIRST ROW: Mary Ann Geisler, Nellie Park, Martha Bowes, Joan Bohmfalk, Sandra Walker, Joy Pogue, Sandra Hamn, Patti Davis, Mary Lou Hunter, Elizabeth Helvenston, Miss Miller, NOT SHOWN: Anafair Brown, Sophie Espinosa, Tomi Clyde Huthins, Helen Ramirez, Karen Van Allen, Martha Jo Dorsey, Dorothy Dunn, Barbara Kennedy, Santos Longoria, Leodanda Lozano, Josie Medina, Loretta Overby, Sharon Page, Angelita Perez, Lois Sanders, Elsa Suniga, Dorothy Baltazar, Maureen Dawson, Mary Ann De Russe, Mary Louise Everett, Melissa Everett, Sarah Kay Handy, Joan Hebert, Margie Ibanez, Shirley Kirk, Patsy Loissen, Hore Luna, Phyllis McGuill, Judy Neal, Santos Rodriguez, Janet Taylor, Mary Ann Vaughn, Harriet Yount, Mary Chessir, Aracelia Gonzales, Mary Jane Hughes, Sharon Mussett, Anna Mary Perez, Carol Yount.

ANNUAL STAFF

PRESENTS
THE "HARVEST MOON" REVIEW



Miss D -
 This year has really
 been great & you have
 helped make it so success-
 ful for me I'm really
 looking forward to next year.
 Love always,
 [Signature]

MAL
 [Image of a building]
 [Text]

CENTRAL POWER AND LIGHT
 [Image of a power plant]
 [Text]

LOUANN BAKERY
 [Image of a bakery]
 [Text]

ZIMMER FLORAL & NURSERY
 [Image of a floral shop]
 [Text]

NORRIS RIDER
 "Best Washer"
 [Image of a washing machine]

THE PARSIAN
 "Director's Approval"
 [Image of a building]

BEVVILLE STUDIO
 [Image of a studio]
 [Text]

THE COMMERCIAL NATIONAL BANK OF BEEVILLE
 [Image of a bank interior]
 [Text]

CENTRAL POWER AND LIGHT
 [Image of a power plant]
 [Text]

ADS



For the Best in
Furniture and Appliances
Shop at

**GUARANTEE PLUMBING
AND
SALES COMPANY**

THE BOOTERY



"Better Values"

216 N. Washington

FL 8-2448

ROBERTS & MCKENZIE

HARDWARE



400 S. Washington

FL 8-2711



Biggest burgers in Beeville

GIANTBURGER

1502 North East Washington

F18-1833



321 N. St. Marys

F18-4888

M & C CONOCO

Treat your car with the best--Service, Gasoline, Care



FIRST NATIONAL BANK

LET US HELP



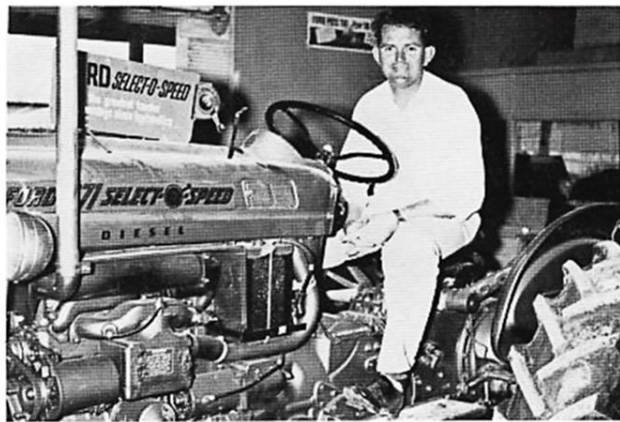
Your Money

GEISLER'S FOOD STORE

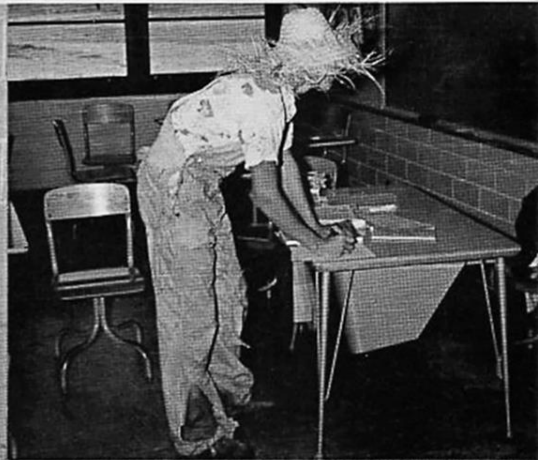


"Shop at Geisler's for fresh foods"

FULLER-WATSON





"Ford Farming Headquarters"





COMMERCIAL NATIONAL BANK

LARGE 

OR 

SMALL

WE WELCOME YOUR ACCOUNT



Compliments of

CENTRAL POWER & LIGHT

Beeville, Texas

LIVE BETTER ELECTRICALLY



FIRST BAPTIST CHURCH



B. C. BROWN, Pastor

"A cordial welcome awaits you in all our services"

ZIMMER FLORAL & NURSERY



"Flowers for every occasion"

San Antonio Highway

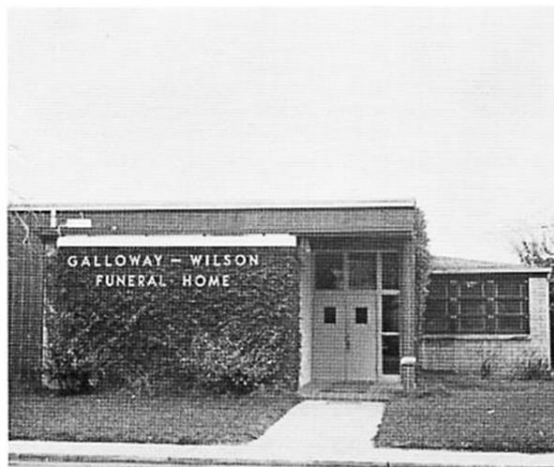
FL-8-1721

GALLOWAY-WILSON

FUNERAL DIRECTORS

F18-2512

409 N. Tyler



Complete
Mortuary
Service

HANCE H. HAMILTON

LAUNDERER AND CLEANER, INC.



Handles every garment with utmost care.

108 N. St. Marys

F18-3787

BONHAM'S FOOD STORES

Friendly,
Courteous
Service
for every
customer

100 W Huntington
Ph. F18-3771



QUIN MOTOR CO.

Oldsmobile, Rambler and Foreign Car sales and service
403 N. Washington F18-1962





BEEVILLE BOOT AND SHOE



**STATE BANK & TRUST
COMPANY**



J. C. PENNEY'S

The better department store
for clothing

306 N. Washington FL8-4528



HARDY MOTORS

Your friendly Plymouth - Dodge
dealer

310 E. Houston FL8-3020



CHESTER'S

AUTO PARTS

If we haven't got it, they
don't make it.

1206 S. Washington FL8-1404



C. R. ANTHONY'S

Complete line of clothing

300 N. Washington FL8-1108



BEEVILLE PUBLISHING CO.

Headquarters for

Royal Typewriters

Allen-Wales Adding Machines

School and Office Supplies

HALL'S



For the finest in fashions, shop at
HALL'S, in Beeville

ODERLESS DRY CLEANERS



Take your laundry to ODERLESS DRY
CLEANERS where cleaning is an art

CITY DRUG STORE



"Where you get service" and "Where you meet your friends."

BEEVILLE FEED AND SEED



BEEVILLE SEED AND FEED STORE, your farm and ranch headquarters.

WESTERN AUTO



Hardware, toys and auto parts

317 N. Washington

F18-3864

LACK'S

Furniture and Accessories

305 N. Washington
Telephone F18-1012



HERMES TRANSFER

FURNITURE PACKERS

507 N. Filmore F18-3796



HOME

FURNITURE & MATTRESS CO.

"For those who appreciate
the Finest--Of Fine Furniture"



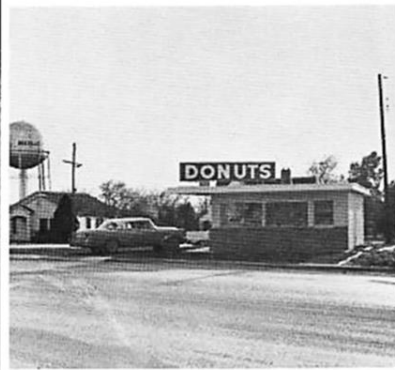
COQUALLA'S

"Better Things for Better
Homes"

DIXIE CREAM

DONUTS

The worlds finest Donuts,
"Dixie Cream Glazed."



KNIGHT

INSURANCE

"Representing Old Reliable
Stock Companies"



Prescriptions promptly filled

SCHULTZ PHARMACY

122 N. Washington

FL8-1150



We stock all the latest records

THE MUSIC BOX

211 N. Washington

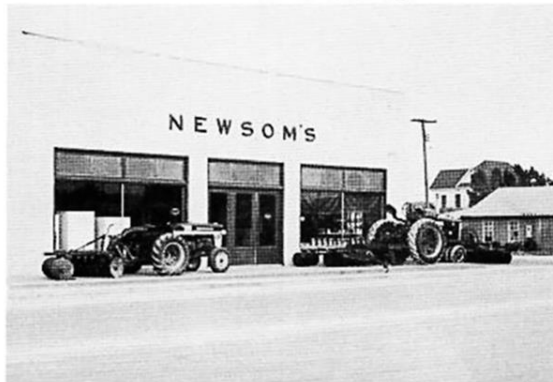
FL8-2236

AMERICAN CAFE



"There's no better place to eat in
Beeville or anywhere else."

NEWSOM'S



"International Harvester Products"
Tractors Power Units and Farm Implements
Sales Service Parts



PAUL SPIKES

AND SONS FEED STORE

Feed and Seed Headquarters

1007 S. Washington FL8-3470



RUTH DAVIS

Provides the latest styles and fashions to suit every woman's taste.



H. E. BUTTS

FOOD STORE

For the finest in food values

200 N. St. Marys FL8-4553



WOLFSHOL AND WELCH

LUMBER CO.

Lumber, Paints and all other needed materials for your home

407 N. Adams FL8-1747

Remember your loved ones with

PORTRAITS BY DARRELL



111 S. St. Marys

F18-1626

For after-school snacks or
dinner, eat at the

KING BEE

702 S. Washington

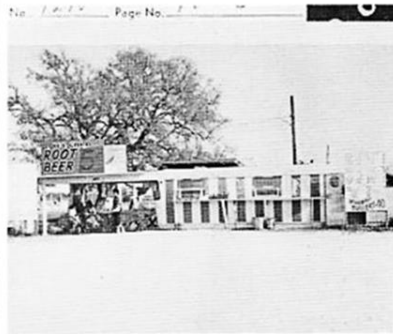


Meet with your friends at the

F. H. WOOLWORTH

ROOTBEER TRAILER

900 S. Washington F18-3072



JOE'S MOTOR SALES

New Chevrolet

Buick

Pontiac

Vauxhall Sales.



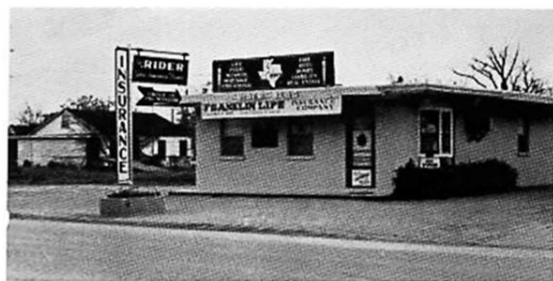
We have every make of used cars, plus dependable service.



301 S. Washington

F18-1681

NORRIS W. RIDER INSURANCE

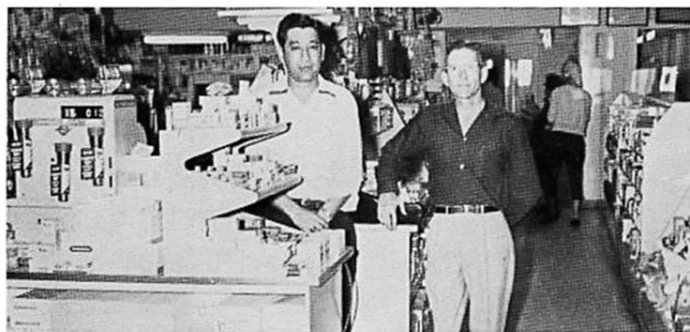


"Your Insurance Friend"

604 North Washington

Phone FL 8-3341

BALLARD DRUG STORE



JOE RICHARDS, Owner

"Our customer is always right" "Your health is our business"

203 N. Washington

FL 8-1420



HAUSE & HALL

MEN'S WEAR

Beeville, Texas

5-10 & 25 CENT

PERRY BROTHERS

213 N. Washington

Beeville, Texas



HALL'S INDUSTRIES

Bronco, Texas

Rialto

THE DUNLAP COMPANY

307 N. Washington

FL8-3314

Beeville



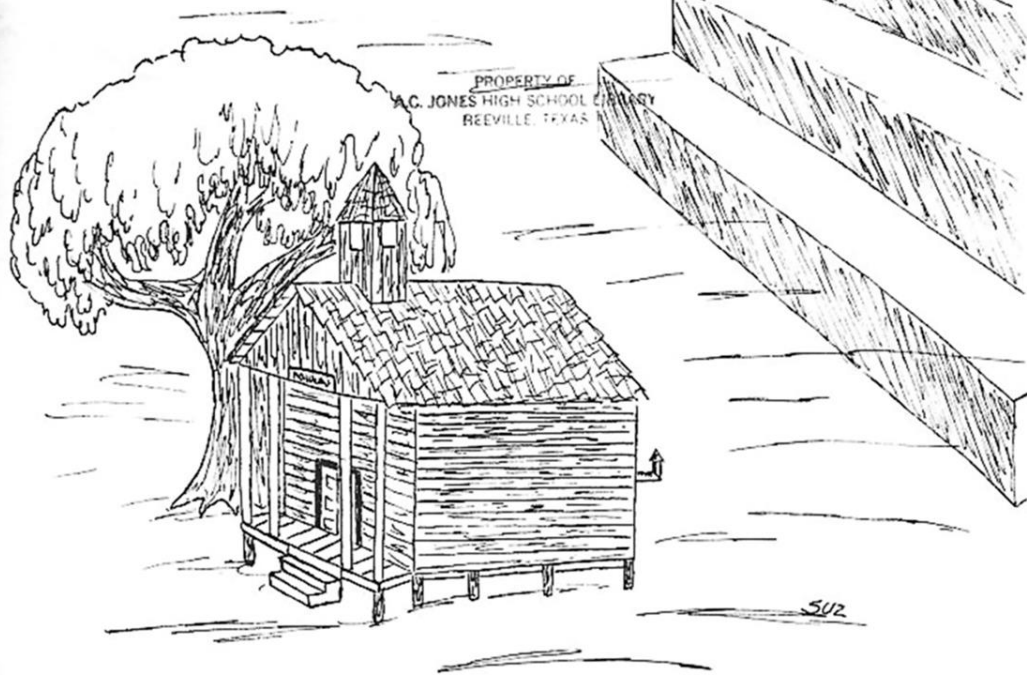
Dear Miss D,
I have really enjoyed working with you on the Tucson staff. You have really helped me more than anything else. Thank you for all you have done for me, and for being so patient with me.

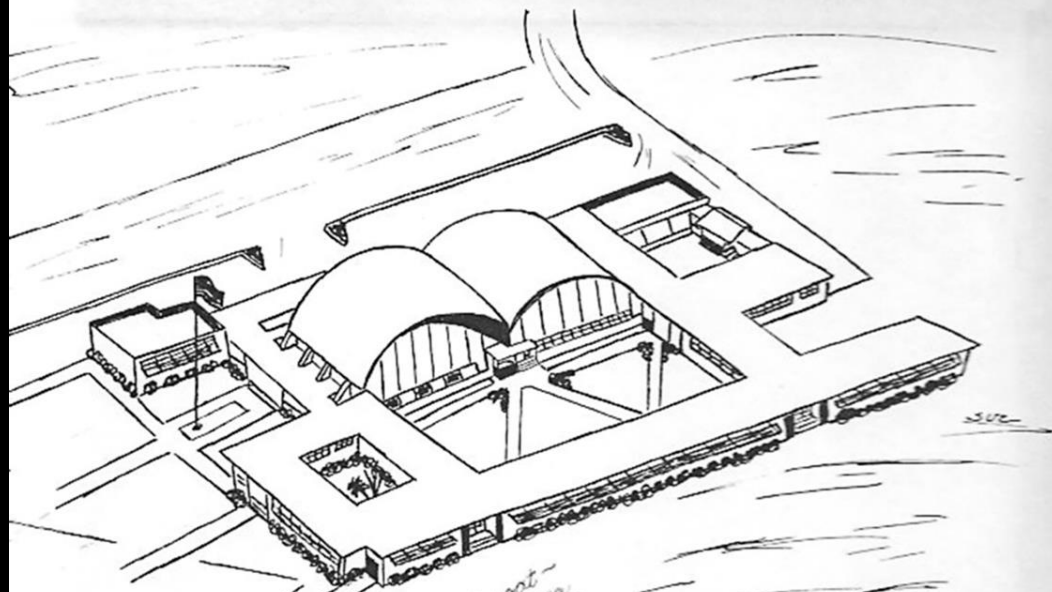
Dear Miss D -
I've really enjoyed being on the Tucson staff. I hope I can keep on being on the staff.
Love,
Sarah Ray

Dear Miss D,
I have really enjoyed working with you on the Tucson staff. You have really helped me more than anything else. Thank you for all you have done for me, and for being so patient with me.

Love

Sarah Ray





Dear Miss August -
I've enjoyed being
in your class and
you're the best teacher
I've ever had. I hope
I can help the ~~school~~
in future years not
hinder it.
Love,
Judy Turner

PROPERTY OF
A.C. JONES HIGH SCHOOL LIBRARY
REEVILLE, TEXAS



A.C. JONES LIBRARY
3 1902 00019707 3