



Trojan '53

Edith -
Gosh, we
sure have had fun
preparing for the play
and the show. I can't
get me out of class and
the God luck and lots
of fun for next year to
try who is every where
at once

Rox
(Phonetic)

To A
GIRL
ALLEN POWELL

Best of luck
in year to
come.

~~Edith~~

Dear Edith,
I'll always remember
you - a cute, sweet
friend. Please stay
the way you are,
Good luck. always
Barbara
Robinson

Dear Edith
It's been swell
darning Charal
with you. I wish
you all the happiness
and luck there is.

Charles
(Dr. 52-53)

Best Wishes +
Lots of Luck
Majewell

Lots of luck to a
nice friendly gal
Lynne
Lutins

Lots of luck
to a fine Geometry
Student L. J. Blackmon

I have enjoyed your smiling
face as well chance to pass
in the hall. Good luck
always. Lorette Michelson

Dear Edith -
Wrote of luck to a
swell chair member.
See you next year.
Luck

Edith Ann O'Donnell
jr 52-53

lots of luck to a
small gal
lots of luck
e. a. m.
Roy jr. 53
lots of luck
"Clondrie" Salmon

To a cute gal
from an ugly pal
lots of luck!
(all in)
Shirley
Clarke

Betty luck
to a real
sweet girl.
Jan.
jr.

My
mom
love
the
best
luck
of
any
the
time
Pat
Munell
Roses are red
Violets are blue
I'll think of you
when you're out of
school.

I can't think of
any thing to say
except that I'm
very hot and I
know we shall
have a grand time
next year.
Yours
Edith

I have enjoyed
having in school
with you. Best
wishes to you
and yours.
Edith

Dear Edith
Remember the time
we had in helping with
the program. We had late
dinner and I had to
stand next to a
stranger
Jan 22-23
I had a good
time
I hope you
will have a
great time
with
your
family
and
yours
Edith

Dear Edith,
I have enjoyed
having you in school
and I hope you
will have a
great time
with
your
family
and
yours
Edith

Good luck
in the year to
come and to you
and Elwing (the)
James
Betty
I'm sorry!
Carl C.
Be a sweet girl

Keep your nose
clean and play
it cool.
your friend
Jerry Giff.

Be a
kind
girl
like
I
keep
my
nose
clean
and
play
it
cool
your
friend
Jerry
Giff

I have known you
for a long time and
I think you are
really a sweet
girl. Best of luck
in the future

Love
Frances
jr 52-53

Dear Edith,
I've wished you
the best of luck for
everything you do in
the future

Ray

Edith,
We've really had
a big time this year!
Prom & Banquet & all
the fun & trouble. As
always would say,
you're really a good
ol' girl.

Paul

Edith,
Best of luck and
wishes in the year
to come in the
A. C. Jones High.
S.
Liberio

Your # 8
Dix are
sure stuck
up. Just
always.

M. Smith

Dear Edith
Well kid, we've
really had us a time
this year. Don't forget the
wonderful "Prom", we had.
It was great. Don't even forget me.
Stay as nice as you are and you'll go
for. Love & luck. Jim. '53

Dear Edith,
It's really been fun
knowing you this year.
Best of luck always and
I know you're going to
have her next year.
I hope you
have lots of fun
next year. Stay
sweet.

Hi SISTER.
I WILL ALWAYS
REMEMBER ALL THE
FUN WE HAD TOGETHER
IN BIOLOGY AND ALL THE PITY
I GAVE YOU IN THERE. I GUESS
THIS IS IT FOR SOME OF US BUT
I WILL ALWAYS REMEMBER YOU.
Jimmie M. 9/11/53

To a very good
girl. I am sorry
I have ragged you
a lot. I want again.

Byron
I hope you
have lots of fun
next year. Stay
sweet.

Deward

Edith you are
a real swell
gal and you
have a fine
personality. But
that this world
can give you
always.

Billy Be.

Best of luck
 Edith. In all the
 years I've known you
 I have admired you to the
 utmost. Best of luck
 to a good old gal
 Walter Lee

Dear H.M.O.D
 It sure has been
 fun this year hasn't it?
 I hope we see each other
 during the summer so I
 can tease you some more.
 I really don't care what
 anyone says. I think you
 a swell gal and a good
 H.M. Always
 Bobly

Edith,
 It sure has
 been loads of
 fun this year. Lets
 make this old school
 really hum next year.
 Lots of luck
 to you
 5. Kubala
 2. 52-53

Best of luck
 to a wonderful
 Chilli maker.
 Beverly W.

Dear Edith -
 Its been so
 much fun this
 year. Loads of
 luck to a
 swell girl.
 Margaret

To the girl that
 gives the best chemie
 home in town,
 from your truly
 fatherhood

Best of wishes
 to the new nice girl.
 California

lots of luck
 to a wonderful
 girl
 Walter H.

Dear Edith,
 I hope you
 have a good
 time. I
 will be
 there
 soon.
 Love,
 Bobly

Dear Edith,

You are my very
sweet and a cute Jr. :-
Good luck always
and I hope you
will have the best
of everything!!

Nancy

Dear Edith,

Good luck
to a swell gal.
I know you will
go a long way
next year and
in the years to
come.

Love,
Mary Beth

Dear Edith

I think you
are a sweet girl. I
wish you luck in
everything that you
do

I love
Pats

Edith,

The best of luck to
the new found sweet
girl. See you next
year.

Love,
Pats

Dear Edith,
Best wishes
to a swell
year to go
together.
Love
Lottie

Dear Edith,

You have been a great
pleasure in every way, for
when there is a job to be
done you can be counted on
to do your part efficiently
and pleasantly. May you
have every success
and happiness.

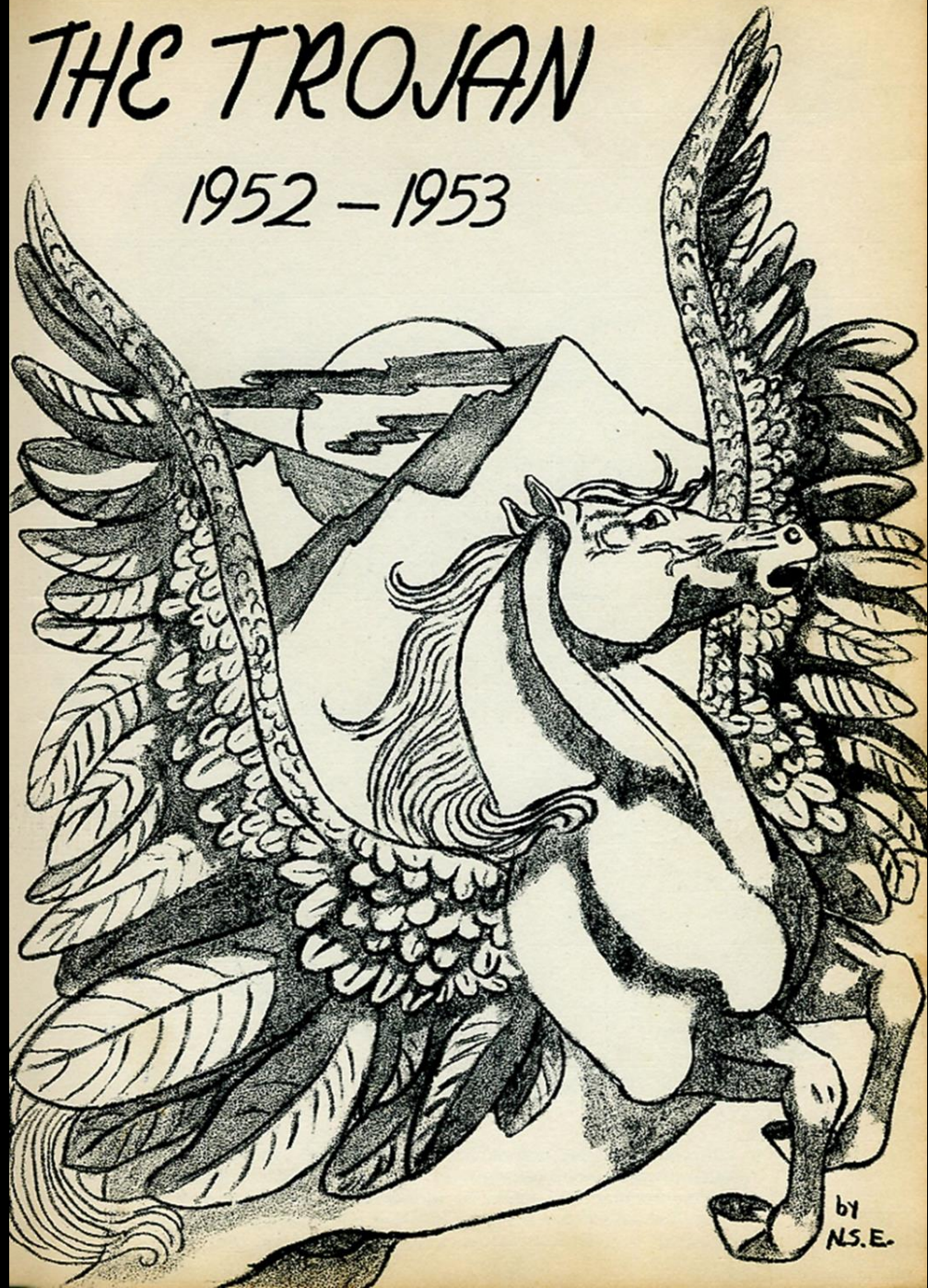
Ollie Woolsey

Good Luck in Year
wonderful year to come.
Pats - Pats

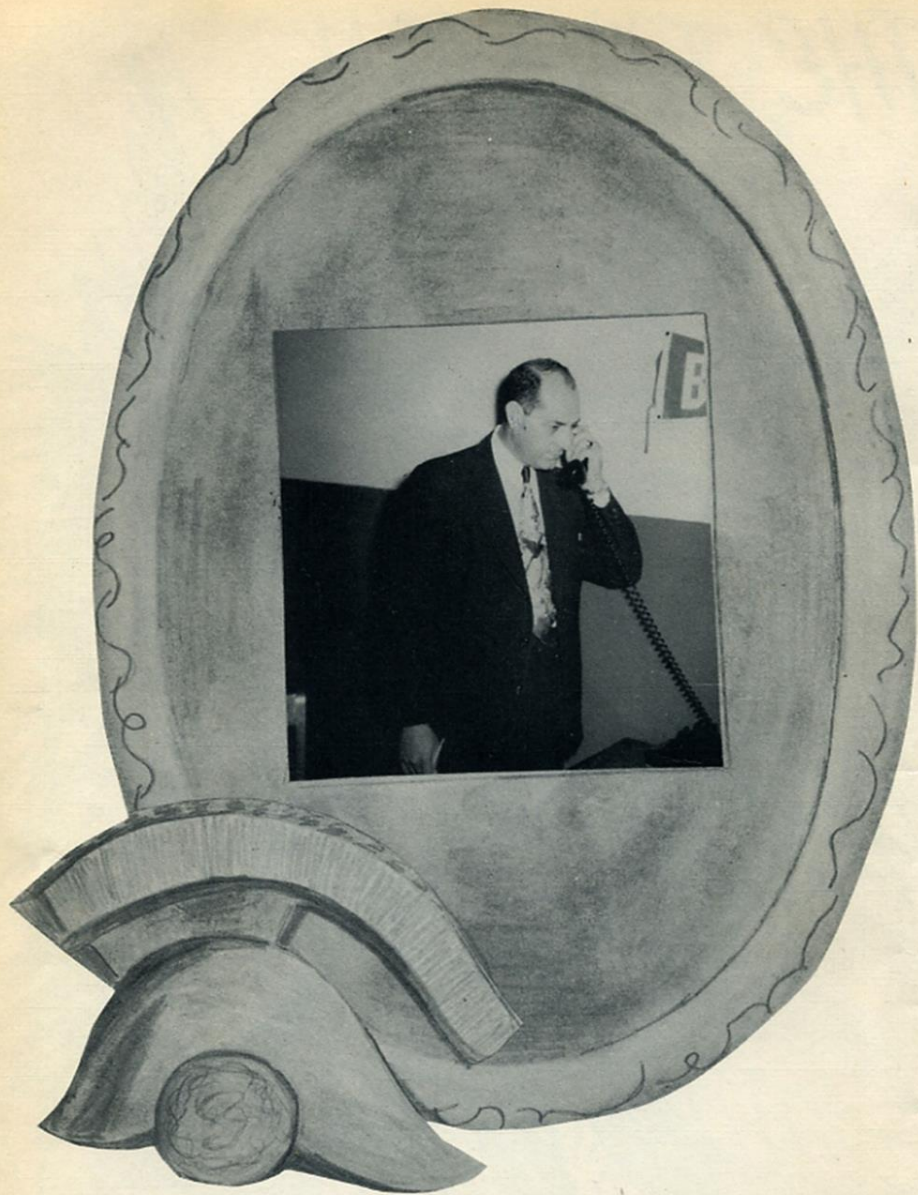


THE TROJAN

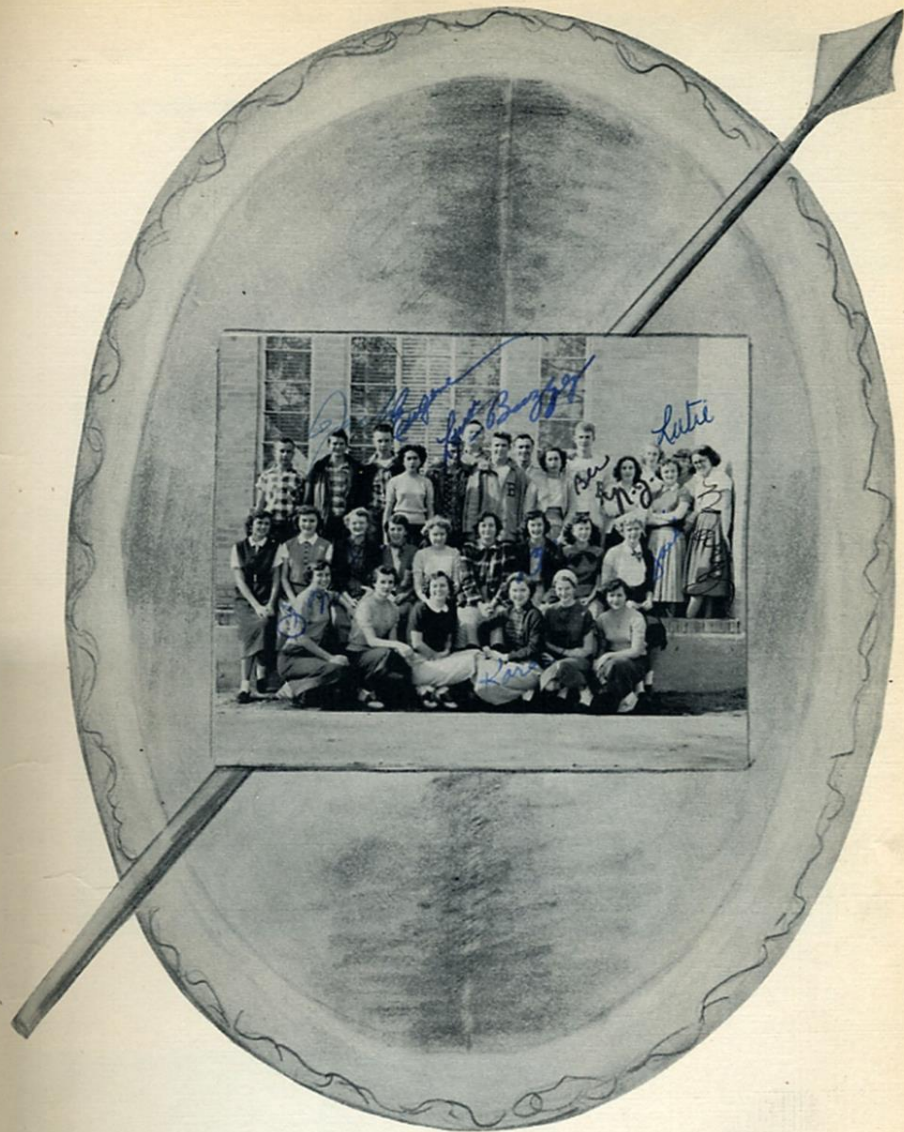
1952 - 1953



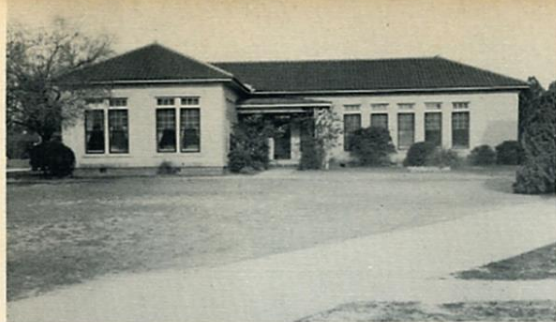
by
N.S.E.



To you, Mr. Alley, we dedicate this Trojan of 1953 in appreciation of your sincere interest in us, the Youth of Today. If someday we conquer the forces of ignorance and intolerance that threaten to engulf our free way of life it will be because of the inspiration received from leaders and teachers such as you.



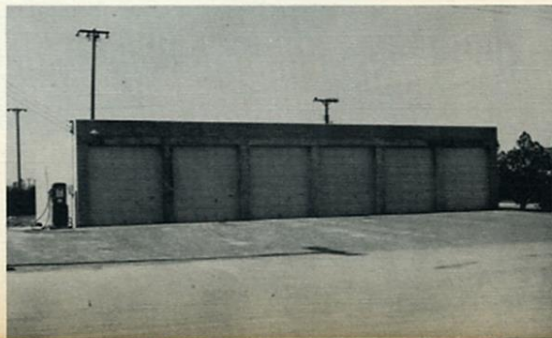
We of the Annual Staff present to you the Trojan of 1953 in hopes that it will bring you pleasure both now and in the years to come, that some day as you turn these pages, so may you turn back the pages of time and be once again in the happy halls of BHS.



HOME ECONOMICS COTTAGE



BEASLEY GYMNASIUM



BUS GARAGE

CENTRAL CAFETERIA



A. C. JONES HIGH SCHOOL



VOCATIONAL AGRICULTURE
BUILDING



School Board

W. H. Peterson, R. A. Hall, R. T. Powell, Arthur Mabray, Floyd W. Parsons, Kirk Bennett, Ralph Jackson, Marion Young, George Morrill.

RALPH JACKSON *President*
KIRK BENNETT *Vice President*
R. A. HALL *Secretary*



Superintendent's Message

This has been a momentous year in the annals of world history. Perhaps to you, as students of the A. C. Jones High School, your year has been no less momentous. We are dwelling in an age of reconstruction—of reconversion—of rapid change! In these tumultuous days in which we live, it is a distinct pleasure to take time off to offer greetings to the students of our high school.

My sincere wish for you is that every hour spent in our high school will be a treasured memory; and my hope is that this school may serve as your instrument for securing a better pattern of life!

Yours very truly,

Floyd W. Parsons

Floyd W. Parsons
Supt. of Schools
Beeville, Texas

*Edith it is a pleasure working with you.
You have been a faithful and cheerful
worker. Success and happiness always.*

*Sincerely,
J. Portwood Alley*



Principal's Message

The future of the world depends to a large degree on the youth of America. This young generation which has just finished the great World War II and is now engaged in a great struggle against communistic forces that would destroy our country, must solve many problems of the present and future if we are to live in peace.

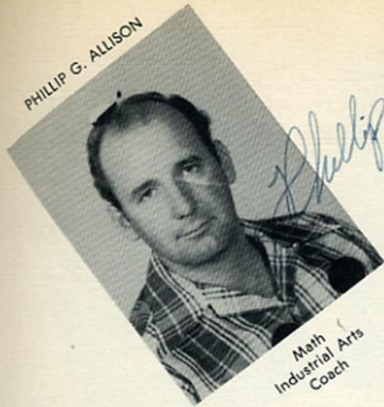
Therefore, since the hope of the world depends upon the thoughts and actions of American youth, it is imperative that we all keep peace in our hearts. If the whole world and all that is in it be thrown into confusion, youth must endure all things with an equable and peaceful mind. Such conduct will encourage every American, in the midst of our present difficulties, to have a clear judgment about our difficulties, and to minister the fitting remedy for them.

Congratulations to the 1953 Trojan Annual Staff and their sponsor for arranging this splendid pictorial history of the activities in A. C. Jones High School.

Best Wishes

J. Portwood Alley

PHILLIP G. ALLISON



Math
Industrial Arts
Coach

Phillip Allison

A.
C.

YVONNE C. CURBO



Girls' Physical
Education

*Earth
Science
Wishing you in
PE
Yvonne Curbo*

J
O
N
E
S

JEAN DUGAT

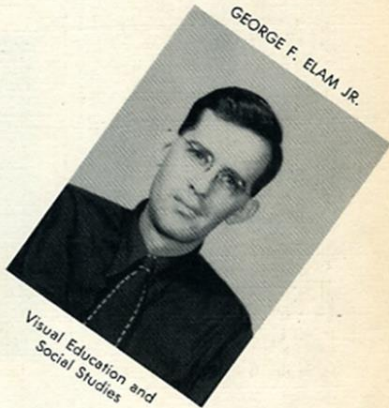


Education
and
Journalism

*Best
year
Jean Dugat*

H
I
G
H

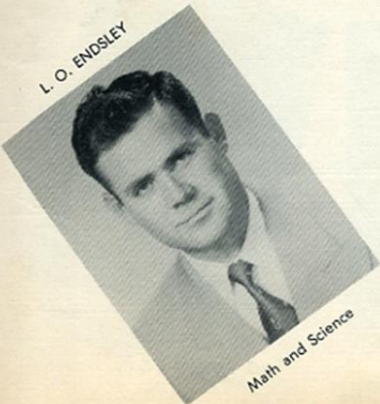
GEORGE F. ELAM, JR.



Visual Education and
Social Studies

F
A
C
U
L
T
Y

L. O. ENDSLEY



Math and Science

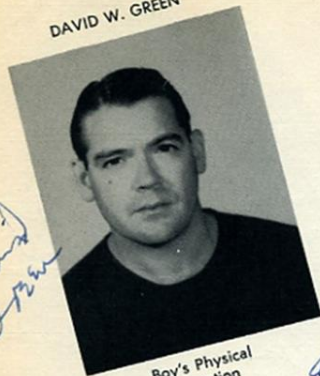
MAMIE E. GOEN



Counselor and
Spanish

*Best wishes for
your success
M. Goen*

DAVID W. GREEN



David Green

Boy's Physical Education

ARCHIE R. HATCHER



Archie Hatcher

Vocational Agriculture

HENRY B. JACKSON



Head Coach and American History

GERTRUDE A. KELLOGG



Faculty

Faculty

Librarian

DORIS M. KUHNERT



Math

ALFRED LINDEMANN



Alfred Lindemann

Science

LAURILE MICHELSON



Business Administration and History

PATRICIA ANN MOORE



Business Administration

BARBARA L. McANELLY



Homemaking

IRENE B. OLIN



English III and IV

GERARD E. STARR



Distributive Education

Faculty

Faculty

*BE Good!
Byron E. Walters*

BYRON E. WALTERS



Band and Choral Director

OLLIE WOOLSEY



English II

Ollie Woolsey

OTHELIA BOYETTE



Secretary to Superintendent

CLASS of 1953



1



2



3



5



6



4



7



8



9



11



15



13



10



12



18



19



21



14



17



22



23



16



20

TURN TO
LAST AD
PAGE



24

Pallas Athene

GODDESS OF WISDOM



S.R.S.

by
N.S.E.

S
E
N
I
O
R
C
L
A
S
S



Top to bottom: Ben Alcala, President; Diana Dugat, Vice President; Betty McClelen, Secretary; Bernard Henry, Reporter.

O
F
F
I
C
E
R
S
1
9
5
3

SONG—"May The Good Lord Bless and Keep You"

MOTTO—We make the ladder on which we climb.

COLORS—Red and white

FLOWER—Red and white carnations

CLASS SPONSORS—Mr. Alfred Lindemann, Mrs. Doris Kuhnert, Miss Laurile Michel-son.



BEN ALCALA

Benny

Key Club 50-53, Treasurer 51-52, President 52-53; Library Club, Vice President 50-51; Junior Class Vice President 51-52; Senior Class President 52-53; Football 49-53, lettered 52; Basketball manager 49-50, lettered 50-53; Safety Patrol 49-50; Baseball manager 50-51, lettered 51-53; Student Council 52-53, Vice President; Nominee All School Favorite; Most Outstanding Senior Boy 52-53; Who's Who 52-53; Emcee Junior Play.

JOSEPHINE BALTAZAR

Josie

Choir 52-53; FHA 52-53; Library Club 49-50;
Basketball 51-53; Football 51-53; Spanish Club
49-50.

JOYCE FAYE BOOTHE

Sug

Band 49-53; DE 52-53; Library Club 49-50; Junior
Play 51-52; Spanish Club 49-50; Nominee Foot-
ball Sweetheart 52-53; Football 51-52; KIBL Club
49-50.



CAROLYN BARBER

Band 50-53; Majorette 51-53; Choral 49-50; An-
nual Staff 52-53; Basketball 50-53; Girls' Football
51-53; Junior Favorite 51-52; Nominee for Fresh-
man Favorite, Sophomore Favorite, All School
Favorite, and Most Beautiful; Junior Play 51-52;
Spanish Club 49-50; Who's Who 52-53.

EVELYN BARTA

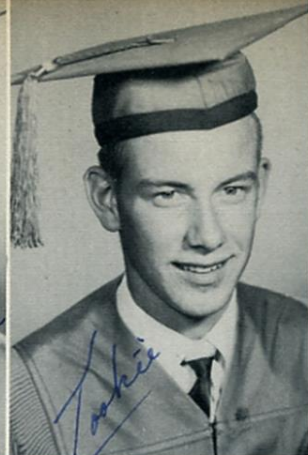
Office Staff 50-53; Spanish Club 49-50.

JEAN BILLINGS

Band 49-53; Drum Major 51-53; Annual Staff 52-
53; Basketball 49-53; Lettered 50-53; Volleyball
49-52; All School Favorite 52-53; Football Sweet-
heart 51-52; Nominee Junior and Senior Favorite;
Trojan Staff, Editor-in-Chief 52-53; Spanish Club
49-50; Student Council 52-53; Reporter; Who's
Who 52-53; Quill and Scroll 52-53.

TOM BALTAZAR





DUWARD BRADFUTE

Duie

Key Club 52-53; Football 51-53; All District 52-53; Baseball 50-53; Basketball 50-53; Nominee for Sr. Favorite; Most Handsome 52-53; Jr. Play 51-52; Safety Patrol 49-50; Majorette Powder Puff Bowl 52-53.

ROBERT CLARKE

Tookie

Band 49-53; All-District Band 51-53; Safety Patrol 49-51; Student Council 49-51; Key Club 50-53, Secretary 52-53; Jr. Class President; Buccaneer Day Band 51-52; Nominee for All School All Favorite and Most Outstanding Boy; Who's Who.

JACK DEAN COMPTON

Gargentua

FFA 40-52; Football 50-52; DE 52-53; Choral 51-52; Trojan Staff 52-53; Feature Editor.

PAUL CONRAD

Coon

Football 49-53; Lettered 49-53; Basketball 49-53; Lettered 50-51; Baseball 49-51, 52-53; Lettered 49-51; Volleyball 49-51, 52-53; Choral 52-53; Trojan Staff 52-53; Assistant Sports Editor; All State Basketball Team, Boys State 51-52; Nominee Freshman Favorite 49-53; Most Athletic 52-53; PE Coach, Youth Day; Second string All District Team 51-52; Quill and Scroll.



JUDY COX

Transfer Sophomore year from Alice; FHA 50-51; Office Staff 51-53; Annual Staff 52-53; Girls' Football 51-53; Trojan Staff, Business Manager, Quill and Scroll 52-53.

PAT CAIN

Cue Ball

Football 51-53; Lettered 52-53; Track 52-53; Key Club 51-53; Basketball 51-53; Tennis 51-53; Volleyball 51-53; Trojan Staff, Production Mgr. 52-53; Choral 50-51; Majorette Powder Puff Bowl; School Float Rodeo Parade 52-53; Quill and Scroll 52-53.

DOROTHY CALHOUN

Band 49-53; Annual Staff 52-53; Trojan Staff, Associate Editor, 52-53; Spanish Club 49-50; Student Council 52-53 Secretary; Who's Who 52-53; Nominee for Most Outstanding Senior Girl; Quill and Scroll 52-53.

JAMIE DUFFY

Duffy

Choir 49-53; FHA 49-50, President; DE 51-53; Vice President; Trojan Staff, Art Editor, 52-53; Library Club 51-53, Publicity; Quill and Scroll 51-53, Secretary-Treasurer 52-53; Annual Staff 51-53, Co-Art Editor 51-53.



CHARLENE GLORIA DOUBRAVA

Circles

Choral 49-50; FHA 52-53; Girls' Football Team 51-53.

DIANA DUGAT

Band 50-52; All-District Band 52-53; Choir 52-53; Vice President Sr. Class; Cheerleader 52-53; Volleyball 49-50; Basketball 51-53; Girls' Football 51-53; Nominee for Most Outstanding Senior Girl, Senior Favorite; Who's Who 52-53; Jr. Play 51-52; Spanish Club 49-50; Student Council 51-53, Treasurer 51-52, President 52-53; Quill and Scroll 52-53; DAR Good Citizenship 52-53; Radio Reporter 52-53; Trojan Staff; Second District Declaration.

CURTIS GAMBLIN

FFA 49-53; DE 51-53; Trojan Staff 52-53; Reporter, Quill and Scroll 52-53.

HELEN GARCIA

Lena

Choir 51-53; FHA 49-50; Spanish Club 49-53; Volleyball 49-53; PE Club 49-50; All Star in Volleyball 50-51.





VIVIAN GARCIA

Viv

Choir 49-50; FHA 49-50; Football 51-53; Trojan Staff 52-53; PE Club 49-50. Quill and Scroll 52-53.

NATIVIDAD GARZA

Tiva

FHA 49-50; Choral 50-51; DE Club 51-53; Sweet-heart of DE Club 51-52.

JUNE GEE

June Bug

Band 50-52; Cheerleader 52-53; Annual Staff 52-53; Basketball 50-53; Trojan Staff 52-53, Associate Sports Editor; Spanish Club 49-50; Quill and Scroll 52-53.

MARGARET GILBRETH

Mickey

Band 52-53, Secretary; Choir 50-52; FHA 49-51; Powder Puff Bowl 51-53.



BILL GRANDBERRY

Red

Choir 50-53, All State Choir 50-52; Key Club 50-53, Vice President 51-53; Annual Staff 51-53; Football 50-53, Lettered 51-53, All District 51-53; Honorable mention All State 52-53; Basketball 50-53, Lettered 51-53; Track 50-53; Lettered 50-53; Baseball 51-53; Tennis 50-53; District Champion 51-52; County Judge, Youth Day 52; Student Council, President 51-52; Sophomore Favorite 50-51; Nominee for All School 52-53; Jr. Favorite 51-52; Most Athletic 52-53; Who's Who 52-53; Twirler Powder Puff Bowl.

LEROY HADWIN

Football 50-53; Co-Captain 52-53; All District 52-53; Quill and Scroll.

DARLA KAY HALL

Kay

Band 49-53, District 51-53, Regional and State 51-52; Choir 51-52; Library Club 49-50; Powder Puff Bowl; FHA 49-50; Spanish Club 49-50.

MILTON HATCHER

Country

FHA 48-52; Song Leader 49-50, President 51-52; Choir 49-50; Trojan Staff 52-53, Assoc. Make-up Editor; Football 50-52; Gold Key Club Secretary 52-53.



BERNARD HENRY

Ber

Football 49-50; Basketball 49-53; Lettered 50-53; Favorite—Fish, Soph, Jr., All School, FFA 49-51, Reporter 50-51; Safety Patrol 49-50, Capt.; Volleyball 50-52; Annual Staff 50-53, Associate Ed. 52-53; Track 51-52; Lone Star Boys State 51-52; Trojan Staff 52-53, Sports Editor; Who's Who; Nominee for Most Handsome, Senior Favorite; Powder Puff Bowl Majorette 52-53; Quill and Scroll.

SALLY JENKINS HUTCHINS

Band 49-53; Flagbearer 52-53; Sec.-Treasurer Jr. Class; Soph Favorite; Most Outstanding Sr. Girl; Student Council 49-51; Jr. Play; Who's Who.

DAURIS JACKSON

Band 49-53; Majorette 50-53; Jr. Play; Basketball 49-53; Lettered 50-53; Tennis 49-51; Student Council 50-52, Rep. 51-52; Nominee Fish, Sophomore, Jr. Senior, All School Favorite; Fish Fav.; Spanish Club 49-50; Who's Who; Powder Puff Bowl 51-53; Quill and Scroll 51-53; Annual Staff 51-53, Assoc. Art Editor 51-52, Editor 52-53; Nominee DAR Award.

NELL LAWSON

Giggles

Library Club 49-53, Secretary 50-51, Pres. 51-52, Corres. Secretary 52-53; Assembly Comm; Powder Puff Bowl 51-52; Office Staff 52-53.





FELIX LEWIS

Curly

FFA 49-53; Key Club 51-53, Board of Directors 52-53; Boxing 52-53; Cheerleader for Powder Puff Bowl 51-53.

JO ANN LEVERMAN

Jody

Band 49-53; DE 51-52, Representative 51-52; FHA 49-51, Reporter; Office Staff, Elementary 50-51; Basketball 52-53.

SYLVIA LEWIS

Sniffles

Choir 51-52; FHA 49-53; Office Staff 52-53; Powder Puff Bowl 51-52.

JAMES LOUIS MCGREGOR

Jimmie

Band 49-53, District 51-52; Trojan Staff 52-53, Associate Art Editor; FFA 50-53; Jr. Play; Youth Day 51-52; Powder Puff Bowl Drum Major 52-53; Orchestra 49-53; Quill and Scroll 52-53.



KATHRYN MCGILVRAY

FHA 48-50; DE 51-53; Stamp Club 51-52; Powder Puff Bowl 50-51; Jr. Play 50-51.

BETTY MCCLELEN

Hotshot

Choral 49-50; FHA 49-53; Library Club 52-53, President 52-53; Secretary-Treasurer Sr. Class; Volleyball 49-53; Basketball 50-53; Most Athletic Sr. Girl 52-53.

JOHN MARTIN

Football 49-52, Lettered 50-52; Coach of Junior Girls Football Team 51-52; Coach of Senior Girls Team 52-53; Trojan Staff 52-53; Quill and Scroll 52-53.

NELLIE MARTIN

FHA 49-50, 52-53; DE 51-53, Secretary-Treasurer 52-53.



BARBARA MALONE

Babe

Band 50-53; Majorette 52-53; Choir 49-50; FHA 49-52; Volleyball 49-50; Jr. Play Between Acts; Football 51-53.

ESTELLA MORENO

Red

FHA 49-53; Spanish Club 49-51, Treasurer-Reporter; Volleyball 49-51; DE 51-53.

SIMON MOYA, JR.

Tronco

Key Club 50-53, Treasurer 52-53; Cheerleader for Powder Puff Game 52-53; Baseball 52-53, Manager 51-52; Football Manager 52-53; Safety Patrol 50-51; Spanish Club 49-50.

DOUGLAS MORRIS





PAT MUSSET

Football 49-50; FFA 49-51; DE 51-53; Jr. Play; Cheerleader for Powder Puff Bowl, 51-52; Majorette for Powder Puff Bowl 52-53.

PAT O'NEIL

DE 52-53; Nominee for Most Handsome Senior Boy; DE Club Delegate to State Convention 52-53; Nominee Texas National Delegate.

CYNTHIA PERKINS

Snookie

FHA 52-53; Powder Puff Bowl 52-53, Co-Captain; Most Beautiful Girl 52-53; School Float 52-53.

BETTE POWELL

Band 49-51; FHA 49-50, 52-53; Library 50-51; Office Staff 51-53; Annual Staff 52-53; In between acts for Jr. Play; Spanish Club 49-50; Manager, Powder Puff Bowl 51-53.



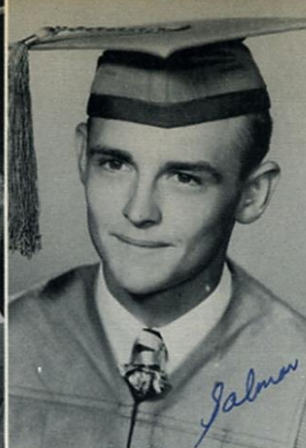
DORENE PARSONS

Doe

PE Club 49-50; FHA 49-53; Powder Puff Bowl 51-53; Jr. Play; Annual Staff 52-53; Library Club 52-53, Editor of Book Worm 52-53; Choral 49-50.

PATRICIA RANGE

Band 49-51; FHA 49-53; Library Club 52-53; PE Club 49-50; Powder Puff Bowl 51-53, Manager 52-53; Volleyball 51-52.



SHIRLEY ROBERTS

Band 49-53; Library Club 50-53, Vice President 50-51, President 51-52, Program Chairman 52-53; Student Council 50-51; Spanish Club 49-50; Powder Puff Bowl 51-52; Youth Day 51-52, City Councilman.

JAMES SALMON

FFA 49-53, Vice President 51-52, President 52-53; Key Club 51-52; Powder Puff Bowl Cheerleader 52-53; Nominee for Most Handsome Sr. Boy; Gold Key Future Farmer 52-53.

ALICIA SALAZAR

Library Club 49-52, President 51-52; Spanish Club 49-50; President; Librarian Youth day 51-52.

JIM ROY STEPHENSON

Rei

Football 49-53, Lettered 50-53; Baseball 49-53, Lettered 49-53; Tri-Captain of Football Team 52-53; Jr. Class Reporter; Trojan Staff, 52-53, Sports Reporter; Safety Patrol 49-50, Captain; Youth Day 51-52, County Surveyor; Quill and Scroll 52-53; Basketball Mgr. 52-53; Sr. Class Favorite.



JAMES LEWIS TRAFTON

Doc Cure-all

Choir 52-53; Baseball 51-53; Football 49-53, Lettered 52-53; Powder Puff Bowl Cheerleader 51-53; Boxing 52-53.

BEATRICE TREVINO

Bea

FHA 49-50; DE 51-53; Spanish Club 49-51; Library Club 49-52.

THERESA VARGAS

Terry

FHA 49-53; Spanish Club 49-51, Song Leader; Volleyball 49-52; Softball 51-52; Choir 51-52.

SHIRLEY ANN WALCH

Band 49-53; Majorette 52-53; FHA 49-53; Volleyball 50-52; Powder Puff Bowl Game 51-53, Co-Captain 51-52; Library Club 52-53, Parliamentarian; Student Council 50-52; Annual Staff 52-53; Basketball 52-53; All-District Band 51-52; PE Club 49-50; Youth Day Plane Geometry Teacher; Orchestra 50-52.



MARILEE WARE

Transfer Jr. Year from Haynesville, Louisiana; Choir 52-53; FHA 52-53; Jr. Play; Student Council 52-53; Courtesy Chairman 52-53.

BOBBIE ANN WOMACK

Transfer from Woodland, Miss. Senior Year; Basketball 52-53; FHA 52-53; Office Staff 52-53.

SHIRLEY YOUNGBLOOD

Band 49-53; FHA 49-50; Library Club 49-50; Student Council 49-50, 52-53; Office Staff 51-53; Annual Staff 52-53; Powder Puff Bowl 51-52; Nominee for Freshman Favorite and Most Beautiful Sr. Girl; Jr. Play; Chapter, District, and Area FFA Sweetheart 51-52.

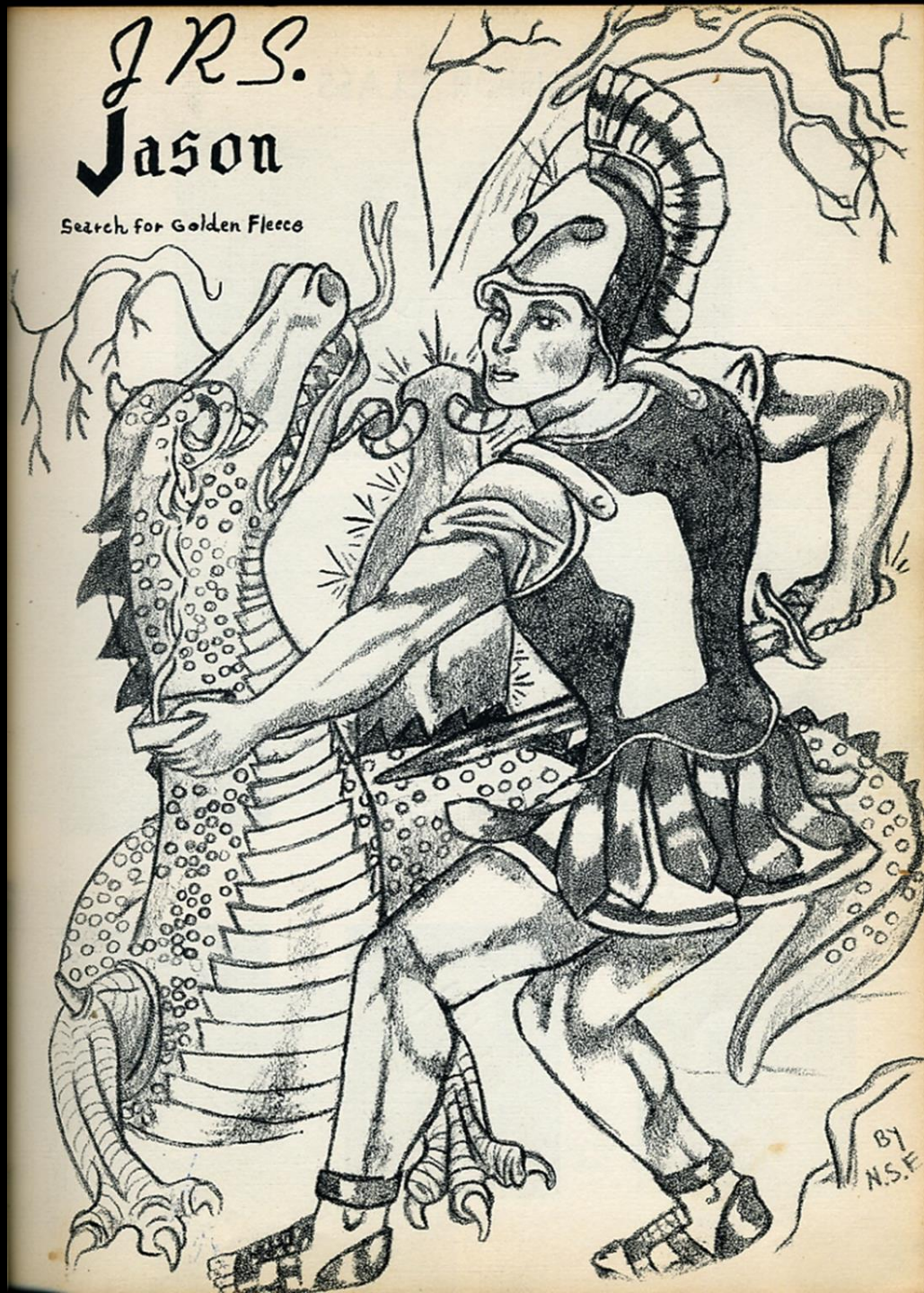
ELBERT BROWN

Football Mgr. 52-53; Annual Staff 50-53; Photographer; FFA 49-53, Reporter 52-53; Safety Patrol 49-51.



J.R.S.
Jason

Search for Golden Fleece



JUNIOR CLASS



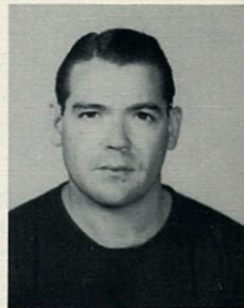
President, Mary Jane Love; Vice President, George Blackmon; Secretary, Shirley Clarke; Reporter, Johnny McGill.



Sponsor
Ollie Woolsey

Ollie Woolsey

FLOWER—White Mum
MOTTO—Today, Not Tomorrow
COLOR—Green and White
SONG—"You'll Never Walk Alone"



Sponsor
David Green



Arnold, Linda

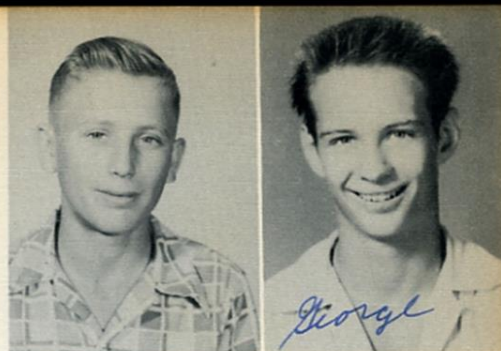


Beard, Sally



Berning, Billy

Bernson, Calvin
Blackmon, George



Briggs, Norman



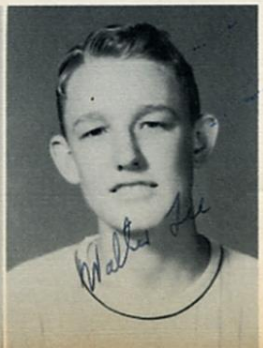
Brown, Sue



Bryan, Don



Busch, Joan



Cantu, Mary Louise
Chesshir, Walter Lee

Chew, Dorothy
Clarke, Shirley



Cude, George



Doubrava, Frances



Doubrava, Roy



Everett, Nancy Sue



Frenzel, Bill
Garza, Luz

Glover, Dana
Gray, Patsy



Griffin, Jerry



Gutierrez, Eliza



Haskins, Ann



Hawkins, Jerry



Hayhurst, Welborn
Henrichson, Dorothy

Herbort, Sonia
Hertel, Milton



Hopkins, Carolyn



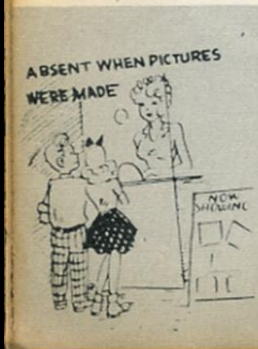
Irby, Gail



Isaacks, Bernice



Isaacks, Johnny



Isaacks, Roy Lee
Israel, Bartell

Jaramillo, Maria Rita
Kirk, Kent



Kubala, Dorothy



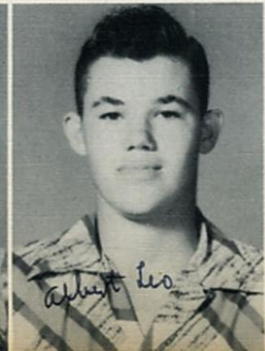
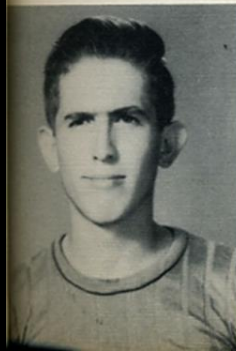
Laudermilk, Carol



Lee, Eugene

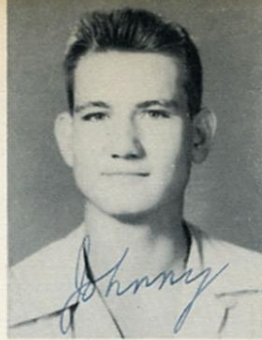


Love, Mary Jane

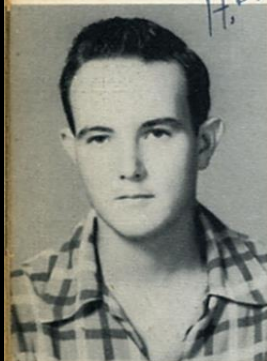


Lozana, Lionel
McGuill, Albert Leo

McGuill, Johnny
McKee, Billy



A.D.



Mabray, Arthur



Martin, William



Matocha, Paul



May, Tommy



Mayorga, Mary
Maxwell, Thomas

Morrow, Ruth
Ochoa, Carolina



Mueller, Carolyn



Mueller, Marilyn



O'Donnell, Edgar



O'Donnell, Edith



Peters, Johnnie
Rayhorn, Billie Jean

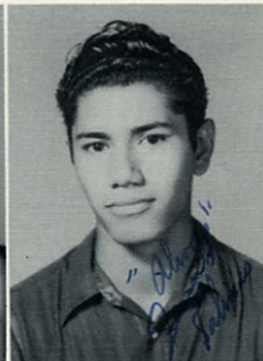
Robinson, Barbara
Rocha, Aira



Rodriguez, Juanita



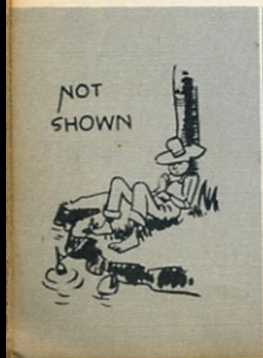
Rodriguez, Refugia



Salinas, Jesus



Sellers, Lydia



Stanley, Lynn
Swinney, Helen

Travland, Margaret
Villegas, Josie



Warnica, Beverly



West, Joe Neil



White, Gwen

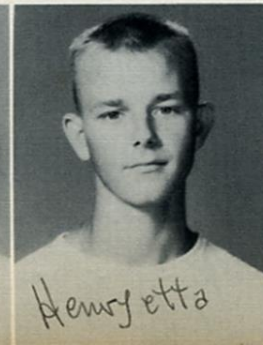


Wilder, Hubert

Williams, Janis



Zimmer, Ralph



Wingenter, Robert



Rice, Frances





SOPHS Pandora



*editors have
enjoyed the story
with you. (All the
sub in the book
to a sweet kid.
Beverly
Dell*

by
N.S.E.



Archer, Lee
Archer, Lynn



Baldillez, Beatrice



Baker, Billy
Baker, Shirley



Bast, Aleene



Burgdolt, Lois



Butts, Virginia



Bond, Jack

Cantu, Andrea

Collinsworth, Juanita



Cox, Violet
Cruz, Joe





Custer, Eldridge

Curtis, Charles
DeLeon, Elvira



DeLeon, Pauline
Gordon, Autry



Durant, Jeanette



Fudge, Claudia



Gaines, Mary
Garcia, Armando

Gilbreth, Ann

Godkin, Gloria



Garcia, Mike
Garza, Rafael





Gorham, Sandra
Govella, Irene



Gray, Norman



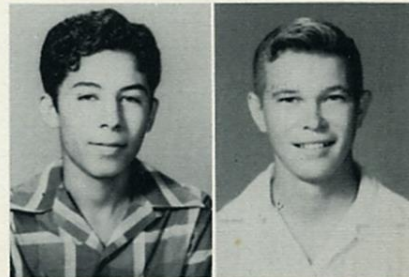
Gutierrez, Olga
Hall, Beverly



Hamilton, Shirley

Henry, Evelyn

Hernandez, Hermenegildo
Hill, Robert Lee



Jemison, Bobby

Jenkins, Nancy



Johnson, Bobby
Jones, Beth





Kirk, Billy

Kirk, Myradel
Klett, Billye



Knocke, Larry
Lain, Dave



Laughter, Lucille



Lehman, Ronald



Leal, Adelmira
Lopez, Lucille



Malone, Carol

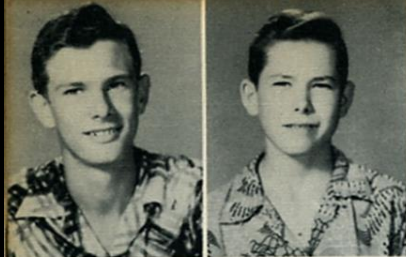
Malone, Shirley



Lott, Anna Joyce
Luna, Ruth

Carol





Martin, Emmett
Martin, Phillip



Martinez, Dominga

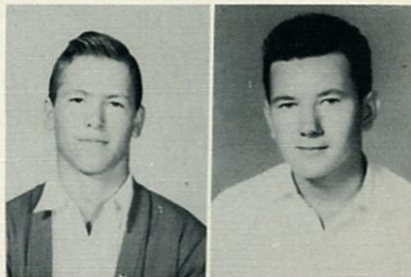


Mauldin, Billie
May, Jerry



McGrew, Barbara

McKee, Buddy



McMahan, Charles

Meider,
Bill

Moreno, Joe

Miller, Charm



Mullinex,
Coleman
Musset,
Grace





Nutt, Margaret

Ochoa, Maria
Patty, Freddy



Pennington, Rhoda
Peterson, Jimmy



Pitman, Florene



Plachy, Jerry



Plachy, Paul
Pollard, Dewayne

Rodriquez, Rebecca

Rodriquez, Horacio



Reyes,
Martha
Rocha,
Antonia





Romine, Arthur
Ross, John

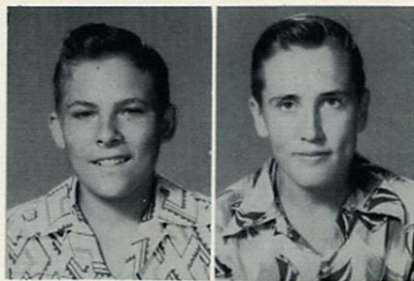


Rossi, Johnny



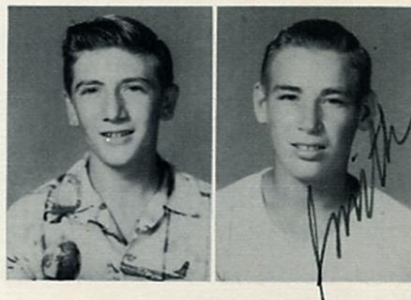
Senseman, Louise
Shropshire, Lutie

Sinor, Marshall

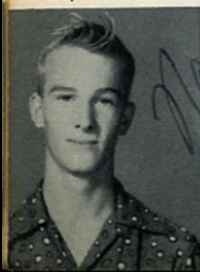


Smejkal, August

Smith, Jim Ed
Smith, Walter



Stephenson, Eddie



Stewart, James Ray
Thompson, Leo





Traveland, Oscar

Trevinc, Ramona
Trial, Joe



Valdares, Pete
Villanueva, Armida



Ward, Carolyn Jo



Whalen, Herbert



Williamson, Mildred
Woodall, Shirley

Zimmer, Kenneth

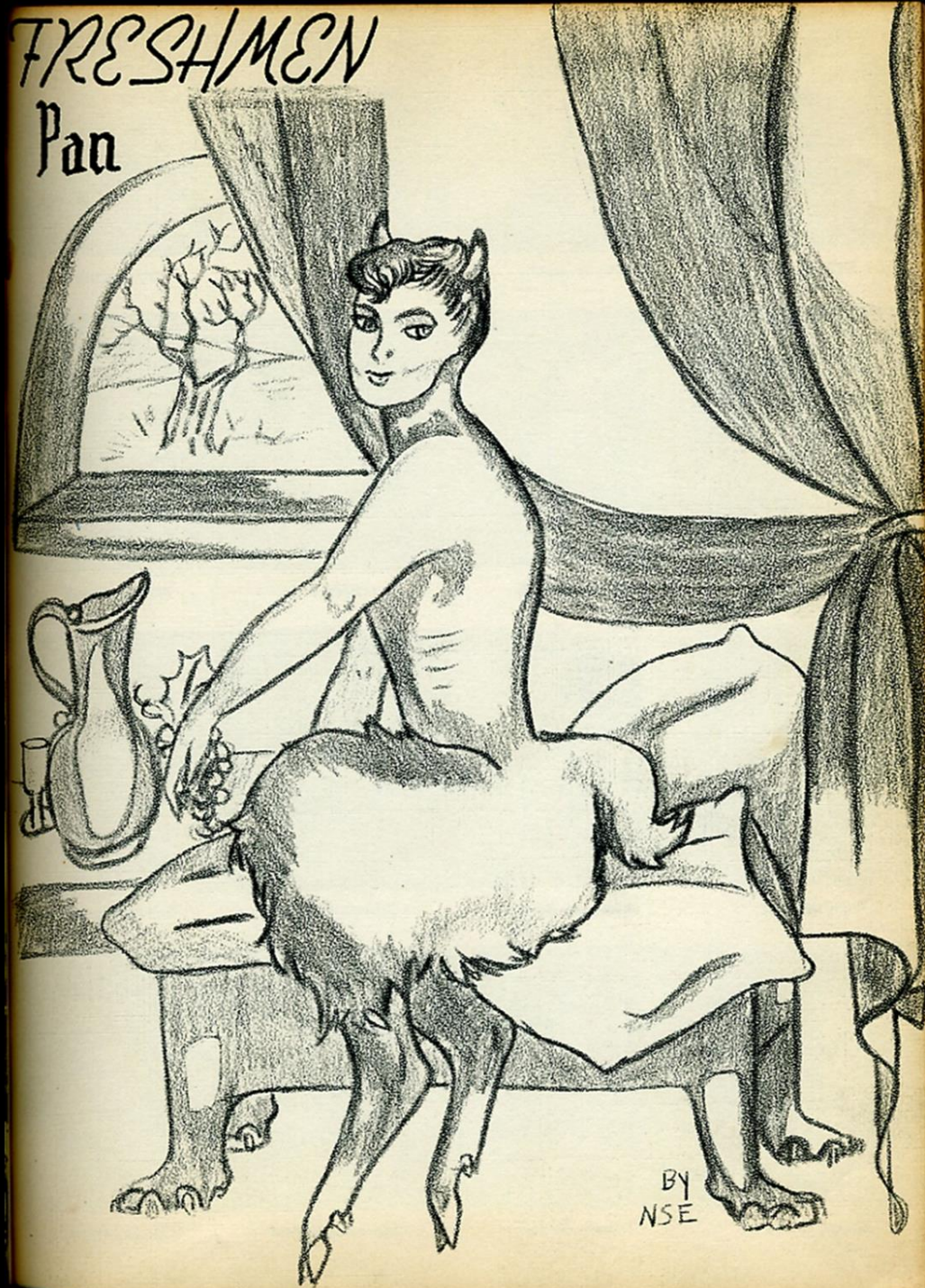


Wright, Nancy
Younts, Louis



FRESHMEN

Pan





Ballard, Alice



Baltazar, Bobby



Barber, Norma Jane



Billings, James



Bills, Anne



Bradfute, Bryon



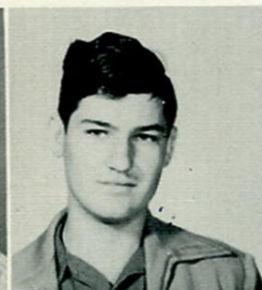
Britt, Frank



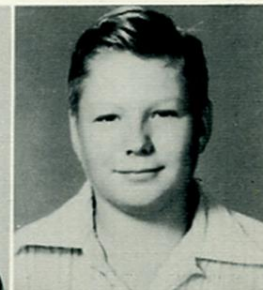
Brown, Patricia



Brown, Shirley



Buchanan, Mac



Butts, Dennis



Castro, Diana



Casey, Shirley



Cheshir, Patricia



Collinsworth, Pete



Crockett, Don



Culpepper, Alice



Daum, Patricia



Davis, Bob



Davis, Kay



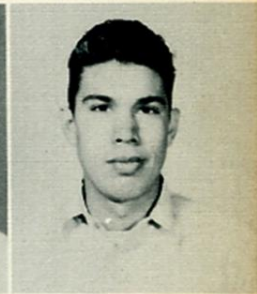
Dennis, Barbara



Dinhobl, Doris



Downes, Clifton



Espinosa, Albert



Espinosa, Pete



Flores, Armando



Ford, Jerry



Fox, Harvey



Franke, Darlyne



Fuson, Darlene



Garcia, Arthur



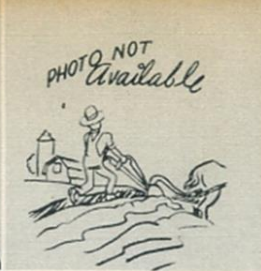
De Puy, Janice



Garcia, Alice



Garcia, Baldemar



Garza, Jessie



Garza, Joe



Garza, Leonard



Garza, Paul



Gilbert, Charles



Glover, Teddy



Gregory, Barbara



Gutierrez, Sylvia



Hamm, Joe



Hancock, Jimmy



Harper, Lockie



Harrison, Tippy



Hatcher, Dorchie Lou



Hatcher, Kenneth



Hatcher, Wayne



Helm, Virginia



Herod, Gene



Hester, Joyce



Hill, Bruce



Hirst, Johnne



Hobbs, Travis



Hopkins, Becky



Huser, Margaret



Hutchins, Katheryne



Isreal, Beda



Jackson, Ralph



Martinez, Arturo



Jordon, Reagan



Barbara, Jostes



Henry, Mary



Kidd, Kitty



Kimball, Jackie



Kircher, John



Klett, Scotty



Koenig, Dorothy



Lawson, Jay



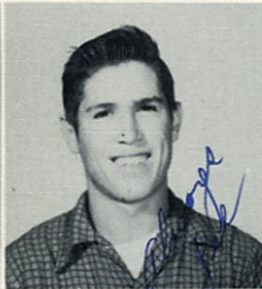
Lehmborg, Raymond



Longaria, India



Loya, Adolph



Lozano, Liborio



McCarty, Marla



McClelen, Joyce



McGill, Barbara



McKinney, Karen



McKenney, Mary Beth



Martinez, Earnest



Matocha, Joe



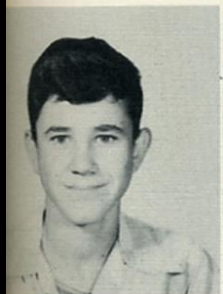
Mayorga, Uvaldo



Meza, Fermin



Morrow, Patricia



Murphy, Carol



Neuhaus, Joyce



Orchard, Jane



O'Shields, Cheryl



Ortiz, Antonio



Park, Barbara



Parsons, Lou Ann



Parsons, Vickie



Pena, Bobby



Plachy, Anna



Powell, Allen



Pringle, Mike



Presa, Agapito



Range, Norma Jane



Parker, LaVada



Reyes, Pete



West, Billy



Rider, Beverly



Roane, Jimmy



Robinson, Wilma



Rodriguez, Amdrea



Rodriguez, Angel



Rosebrock, Carolyn



Routh, Lawanna



Rowland, Ronnie



Ybanez, Eleanor



Sandoval, Bernie



Skoruppa, Leona



Smith, Patty



Sweet, Eugene



Taylor, Gayle



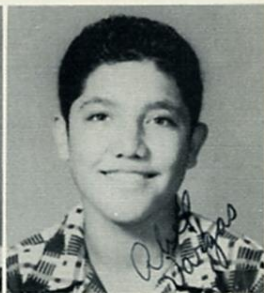
Thompson, David



Tollivar, Eleanor



Trevino, Aurelio



Vargas, Abel



Vargas, David



Velasquez, Maria



Villegas, Robert



Warren, Ruth



White, Mary Ann



Wingerter, Anthony



Wright, Barbara



Young, Jay



Youngblood, Virgil



ANNA LOU ZERDA

FAVORITES

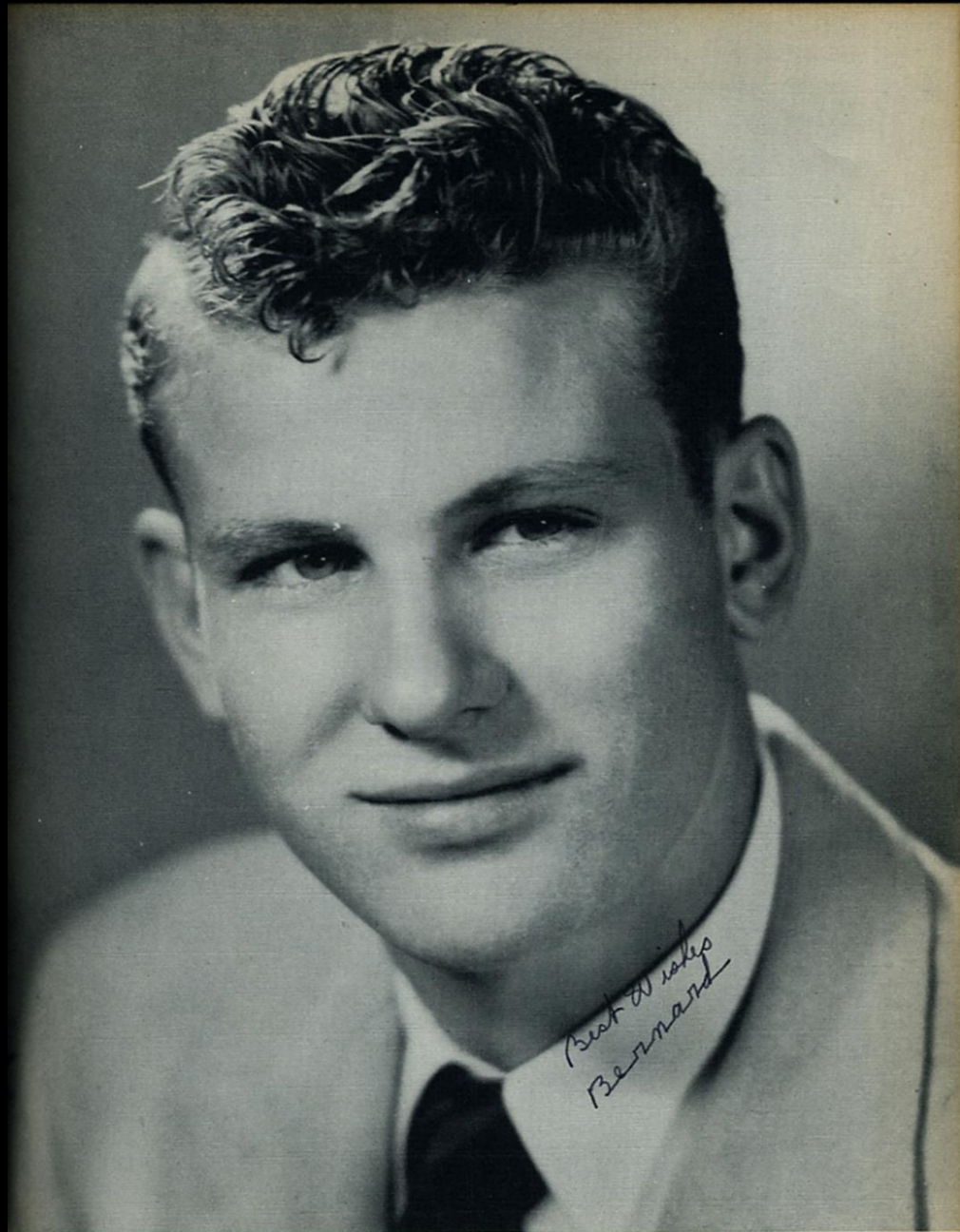
Venus
Apollo



BY
NSE



ALL SCHOOL FAVORITE
Jean Billings



ALL SCHOOL FAVORITE
Bernard Henry



SENIOR FAVORITE
Jim Roy Stephenson



SENIOR FAVORITE
Diana Dugat



JUNIOR FAVORITE
Janis Williams



JUNIOR FAVORITE
George Blackmon



SOPHOMORE FAVORITE
Billy Baker



SOPHOMORE FAVORITE
Evelyn Henry



FRESHMAN FAVORITE
Dorchie Lou Hatcher



FRESHMAN FAVORITE
Johnny Hirst

MOST BEAUTIFUL

Cynthia Perkins



MOST HANDSOME

Duward Bradfute



MOST OUTSTANDING

Sally Jenkins



MOST OUTSTANDING

Ben Alcala



MOST ATHLETIC

Betty McClellan



MOST ATHLETIC

Paul Conrad



NOMINEES



SENIOR

ALL SCHOOL

MOST OUTSTANDING



Dauris Jackson
Diana Dugat
Jean Billings
Jim Stephenson
Bernard Henry
Durward Bradfute

Diana Dugat
Dorothy Calhoun
Sally Jenkins
Robert Clarke
Ben Acala



Dauris Jackson
Carolyn Barber
Jean Billings

Bill Granberry
Bernard Henry
Ben Acala
Robert Clark



MOST ATHLETIC

HANDSOME

MOST

AND

BEAUTIFUL



Paul Conrad
Bill Granberry

Shirley Youngblood
June Gee
Carolyn Barber
Cynthia Perkins

Pat O'Neil
James Salmon
Bernard Henry
Durward Bradfute

NOMINEES



F
R
E
S
H
M
E
N

Mary Beth McKinney
Dorchie Lou Hatcher
Lou Ann Parsons
Allan Powell
Byron Bradfute
Johnny Hirst
Bruce Hill



S
O
P
H
O
M
O
R
E
S

Anna Joyce Lott
Evelyn Henry
Nancy Jenkins
Buddy McKee
Bill Baker



J
U
N
I
O
R
S

Janis Williams
Mary Jane Love
Gail Irby

Tommy May
Norman Briggs
George Blackmon



F.
H.
A.

Joe Moreno
Thomas Maxwell
Bartel Isreal



F.
F.
A.

Anna Lott
Marla McCarty
Ann Haskins

Evelyn Henry
Dorchie Hatcher



Who's Who



Dorothy Calhoun



Ben Alcalá



Robert Clarke

Handwritten note:
I hope
of just come in from a
big hunt.



Jean Billings



Carolyn Barber



Sally Jenkins Hutchins



Diana Dugat



Bernard Henry



Dauris Jackson



Bill Granberry



SPORTS

Hercules and the lion

by
NSE



JEFF CURBO
Assistant Coach



HENRY JACKSON
Head Coach



GAIL ALLISON
Assistant

TROJAN FOOTBALL

Squad of 1952





PAUL CONRAD
Tri-Captain



LEROY HADWIN
Tri-Captain
All-District '52



JIM ROY STEPHENSON
Tri-Captain

FOOTBALL SWEETHEART

GAIL IRBY





FIRST BACKFIELD—QB George Blackman, LH Lynn Stanley, RH Jerry Griffin and FB Billy Granberry.



SECOND BACKFIELD—HB Roy Doubrava, FB Agapito Presa, QB Buddy McKee, and QB Duward Bradfute, All-District 52.



TROJAN FORWARD WALL—RE Paul Conrad, RT Leroy Hadwin, RG Arthur Mabray, Center Ben Aloala, LG Johnny McGill, RT Jim Stephenson, and LE Billy Baker.

DEFENSIVE LINE—Left to right: Conrad, Stephenson, Bradfute, McGill, Mabry, Hadwin, Stanley, and Baker.





Top, left to right:
 BILLY GRANBERRY,
 Fullback, *All-District*,
 51-52; LYNN STAN-
 LEY, Halfback; JERRY
 GRIFFIN, Halfback.



GEORGE BLACKMON
 Quarterback



BILLY BAKER
 End

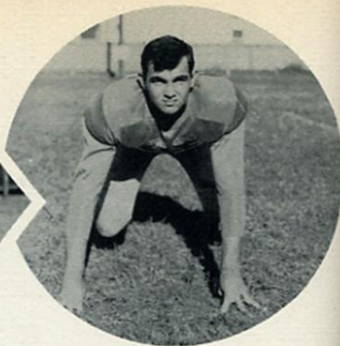
Beeville.....	14	Robstown	13
Beeville.....	6	El Campo	7
Beeville.....	33	Aransas Pass	0
Beeville.....	36	Sinton	0
Beeville.....	14	Refugio	19
Beeville.....	65	Karnes City	18
Beeville.....	20	Yoakum	55
Beeville.....	21	Cuero	7
Beeville.....	14	Port Lavaca	0
Beeville.....	40	Edna	20



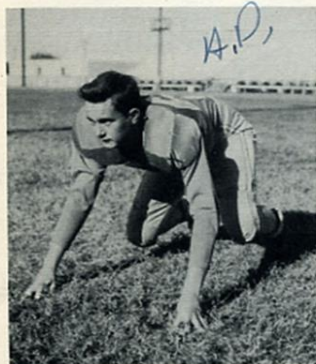
BEN ALCALA
Center



JOHNNY MCGUILL
Guard
All-District '52



JACK COMPTON
Guard



ARTHUR MABRAY
Guard



BERNIE SANDOVAL
Guard

PAT CAIN
End

DAVE LAIN
Tackle



EUGENE LEE
Center



AGAPITA PRESA
Fullback



BYRON BRADFUTE
Tackle

TROJAN MANAGERS



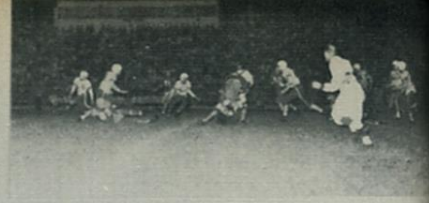
ELBERT BROWN and SIMON MOYA

JAMES TRAFTON
Guard



FREDDY PATTY
End







TROJAN A SQUAD

Left to right: Billy Granberry, Duward Bradfute, Ben Alcala, Coach Gail Allison, Billy Baker, Bernard Henry, and Paul Conrad.



Boys' Basketball



TROJAN B SQUAD

Left to right: Mike Pringle, Joe Moreno, Byron Bradfute, Johnnie Hirst, Jerry Ford, Allen Powell, Coleman Mullinex, Don Bryan, Pat Cain, Bobby Johnson, Jimmie Peterson, and Buddy McKee.



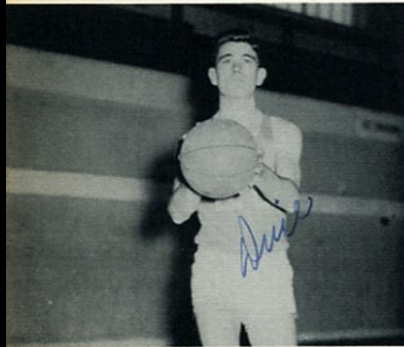


BEN ALCALA
Senior



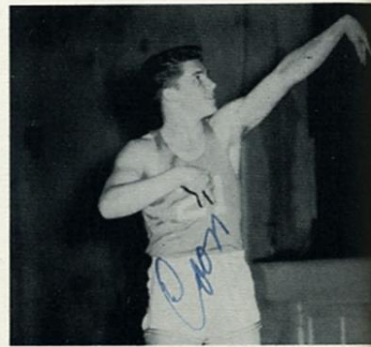
BILLY BAKER
Sophomore

T
R
O
J
A
N
S



DUWARD BRADFUTE

BILLY GRANBERRY
Senior



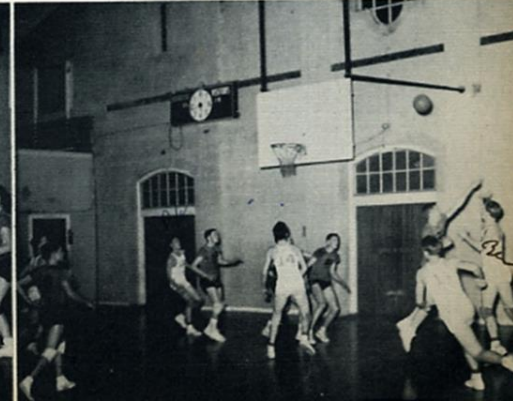
PAUL CONRAD

ALL-DISTRICT BER HENRY
Senior





Beeville.....	56	Victoria	42
Beeville.....	48	Aransas Pass	27
Beeville.....	65	Cuero	30
Beeville.....	56	New Braunfels	61
Beeville.....	39	A&M Consoladated	40
Beeville.....	55	Refugio	43
Beeville.....	56	George West	33
Beeville.....	42	Sinton	62
Beeville.....	42	George West	27
Beeville.....	60	Aransas Pass	59
Beeville.....	48	Pawnee	31
Beeville.....	56	Freer	26
Beeville.....	48	Sinton	46
Beeville.....	63	Victoria	37
Beeville.....	38	Woodsboro	32
*Beeville.....	66	Port Lavaca	33
*Beeville.....	45	Refugio	46
*Beeville.....	46	Edna	47
*Beeville.....	63	Yoakum	39
*Beeville.....	35	Cuero	16
*Beeville.....	60	Port Lavaca	22
*Beeville.....	38	Refugio	48
*Beeville.....	73	Edna	63
*Beeville.....	64	Yoakum	43
*Beeville.....	80	Cuero	52
*District games			





Evelyn



June



Jean

TROJANETTES



Carolyn



"A" TEAM—Dauris Jackson G, Evelyn Henry F, Betty McClelen G, Ruth Morrow G, Jean Billings F, Diana Dugat F, Jerry Hawkins G, Carolyn Barber F, June Gee F, Beverly Warnica G.



Diana



Mrs. Yvonne Curbo, Coach



Dauris



Betty Lou



Ruth



"B" TEAM—Marla McCarty G, Joan Leverman G, Margaret Travland F, Joyce McClelen F, Martha Reyes F, Shirley Walch G, Lou Ann Parsons F, Patricia Morrow F, Mary Beth McKinney G, Anna Joyce Lott G.



Jerry



Managers, Janis Williams and Sally Beard



Beverly



Did ya make it?



Jump high, Carolyn



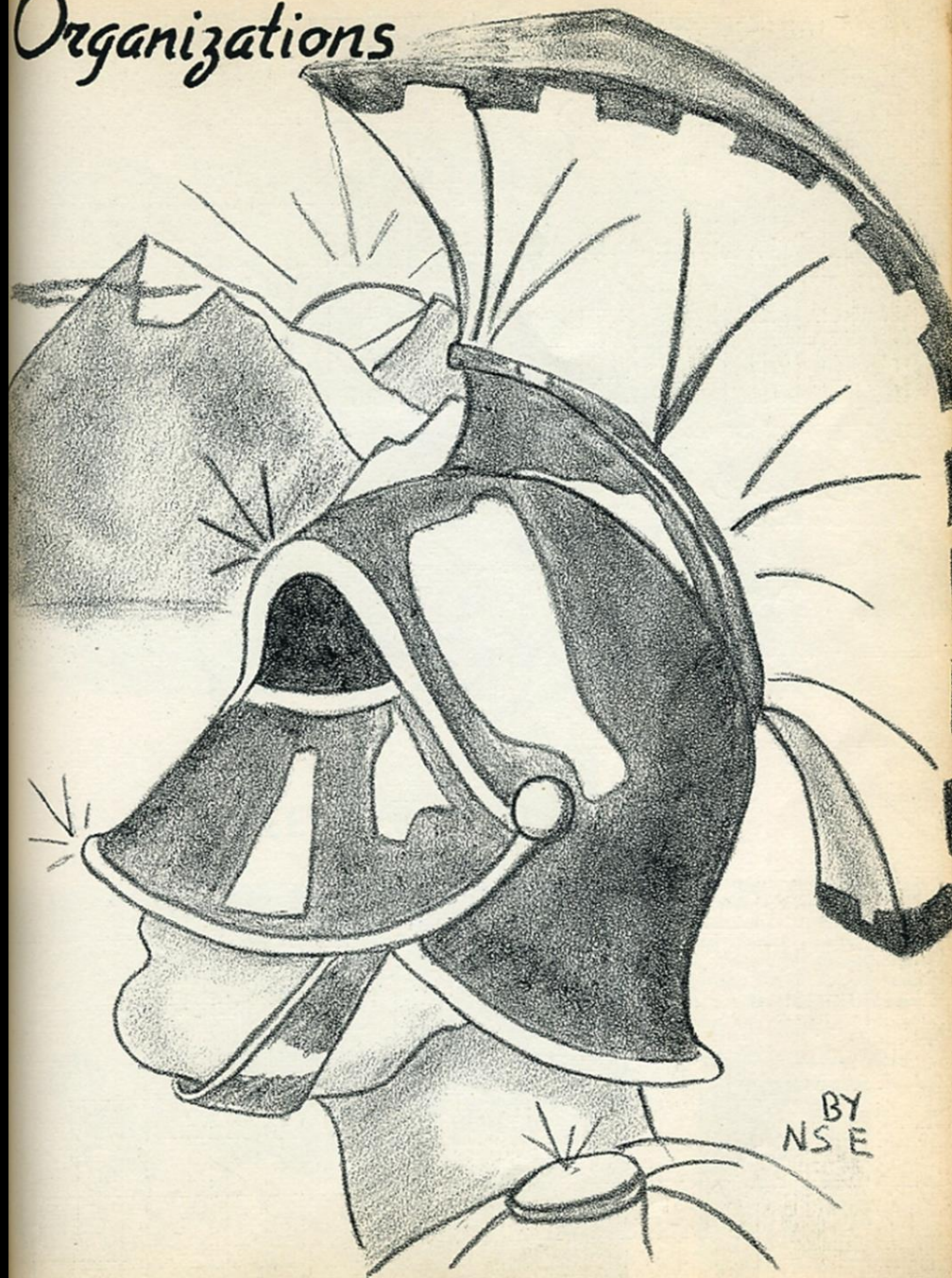
Free shot for Jean

Shhhhhhhhhhhhhhhhh

Tie Ball



Organizations





Left to right: Dauris Jackson, Editor; Bernard Henry, Associate Editor; Ann Gilbreth, Mary Gaines, Bus. Mgrs.; Elbert Brown, Photographer; Nancy Jenkins, Anna J. Lott, Lutie Shropshire, and Carolyn Ward. Seated: Gail Irby and Nancy Everett. ♣

*Hope you like it.
Ber*

*Hope you like it!
Good luck
always,*

Mary
**N
U
A
L**



Miss Patsy Moore, Sponsor

**S
T
A
F
F**

Standing, left to right: Patricia Morrow, Karen McKinney, Judy Cox, Dorothy Calhoun and Shirley Walch. Seated, left to right: Dorchie Lou Hatcher, June Gee, Carolyn Barber, Jean Billings, and Bette Powell.

Oscar Travland, Photographer





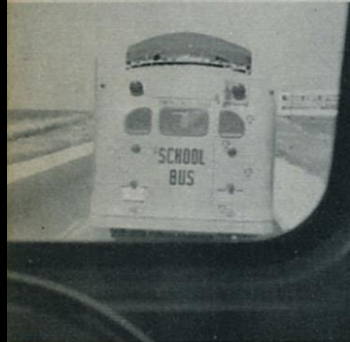
BEEVILLE TROJAN BAND

Under the direction of
BYRON E. WALTERS

Lynn Archer, Bill Baker, Carolyn Barber, Norma Barber, Bill Berning, Jean Billings, Ann Bills, Jack Bond, Joyce Boothe, Sue Brown, Don Bryan, Dennis Butts, Virginia Butts, Dorothy Chew, Dorothy Calhoun, Robert Clarke, George Cuke, Alice Culpepper, Eldridge Custer, Bob Davis, Kay Davis, Darlyne Franke, Darlene Fuson, Mary Gaines, Margaret Gilbreth, Dana Glover, Teddy Glover, Darla Hall, Shirley Hamilton, Dorchie Hatcher, Evelyn Henry, Sonia Herbert, Gene Herod, Milton Hertel, Robert Hill, Johnny Hirst, Gail Irby, Beda Israel, Dauris Jackson, Nancy Jenkins, Sally Jenkins Hutchins, Beth Jones, Barbara Jostes, Billy Klett, Lucille Laughter, JoAnn Leverman, Anna Joyce Lott, Carol Laudermilk, Mary Love, Barbara Malone, Carol Malone, Shirley Malone, Patricia Morrow, Emmet Martin, Marla McCarty, Joyce McClelen, Barbara McGill, Jimmie McGregor, Karen McKinney, Mary Beth McKinney, Mary Nutt, Edgar O'Donnell, Lou Ann Parsons, Dewayne Pollard, Billie Rayburn, Beverly Rider, Shirley Roberts, Lawana Routh Ronnie Rowland, Lydia Sellers, Petty Smith, Eddie Stephenson, James Ray Stewart, Gayle Taylor, Eleanor Tollivar, Margaret Traveland, Oscar Traveland, Shirley Welch, Ruth Warren, Shirley Woodall, Shirley Youngblood.



Concert Season



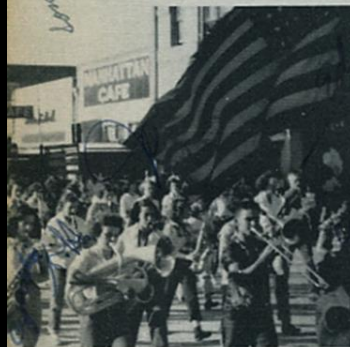
"On The Trail"



"Our Director"
Byron E. Walters



"Home Town Band"



"Americans We"



"That's My Boy"
Rene



"Jeanne With the Light Brown Hair"



"Its My Lazy Day"



"I Love A Parade"



Barbara Malone



Gail Irby



Shirley Walch



Carolyn Barber



Jean Billings, Drum Major



Dauris Jackson



Kay Davis, Tumbler



Billie Jean Raeburn, Tumbler



Beda Israel, Tumbler



Bottom row, left to right: Mary Ann White, Florene Pitman, Lois Burgdolt, Dorothy Kubala, Patricia Brown, Doris Dinoble, Barbara McGrew, Dorothy Koenig, Eleanor Toliver, Carolyn Rosebrock, Bernice Issacks, Josie Baltazar, and Ramona Trevino.

Middle row: Shirley Baker, Mary Nutt, Armida Villvera, Pauline De Leon, Edith O'Donnell, Sally Beard, Grace Mussett, Patricia Chesshir, Lockie Harper, Mary Mayorga, Linda Arnold, Marilee Ware, Diana Castro, Norma Jane Range, Joyce McClelen, and Jerry Hawkins.

Top row: Jerry Plachy, Bernard Henry, Johnny Rossi, Paul Conrad, Billy Granberry, David Vargas, Byron Bradfute, Johnny McGill, Walter Chesshir, Frank Carpenter, Charles Curtis, James Trafton, Norman Briggs, and Jack Bond.

Not pictured are: Billy Baker, Charlene Doubrava, Kathryn Hutchins, and Cheryl O'Shields.



DIANA DUGAT

C
H
E
E
R
L
E
A
D
E
R
S



JUNE GEE



NORMAN

BRIGGS

BEVERLY WARNICA

ANN GILBRETH



of
1
9
5
2
and
1
9
5
3

FUTURE FARMERS OF AMERICA



OFFICERS and SPONSOR



ANN HASKINS
Sweetheart



President, James Salmon; Vice President, Felix Lewis; Secretary, Bobby Jemison; Treasurer, Albert McGill; Rep., Elbert Brown; Parliamentarian, Ronnie Lehman; Sentinel, Joe West; Historian, Ralph Zimmer; Song Leader, Welborn Hayhurst; Local Advisor, Mr. A. R. Hatcher; Lee Archer, Calvin Bensen, Jack Compton, Roy Doubrava, Clifton Downes, Pete Espinosa, Jerry Ford, Harvey Fox, Norman Gray, Armando Garcia, Baldemar Garcia, Leonard Garza, Paul Garza, Kenneth Hatcher, Wayne Hatcher, Bruce Hill, Roy Isaacks, Reagan Jordon, Bartell Israel, John Kircher, Billy Kirk, Scotty Klett, Jay Lawson, Emmet Martin, Joe Matocha, Charles McMahon, Joe Moreno, Johnny Peters, Jerry Plachy, Paul Plachy, Kenneth Zimmer, Allen Powell, Bill West, Aurelio Trevino, Milton Hatcher, Pete Reyes, Walter Smith, Marshall Sinor, David Thompson, Curtis Gamblin, Pat Mussett, Jimmie McGregor, Tommy Maxwell.

FUTURE HOMEMAKERS OF AMERICA



TOMMY MAXWELL
Sweetheart



OFFICERS and SPONSOR



Betty McClelen, President; Shirley Clarke, Vice President; Carolyn Hopkins, Secretary; Ann Gilbreth, Parliamentarian; Billie Klett, Historian; Violet Cox, Song Leader; Mary Love, Pianist; Margaret Traveland, Rep.; Tommy Maxwell, Sweetheart; Miss Barbara McAnelly, Sponsor; Antonio Rocha, Alra Rocha, Barbara Park, Andrea Rodriguez, Myradel Kirk, Lucille Lopez, Mildred Williamson, Mary Mayorga, Becky Hopkins, Juanita Rodriguez, Patricia Range, Doreen Parsons, Joyce McClelen, Ruth Warren, Rhoda Pennington, Jeanette Durant, Lois Burgdolt, Barbara Gregory, Olga Moroquis, Bobbie Womack, Beverly Hall, Jerry Hawkins, Claudia Fudge, Bernice Isaacks, Anna Plachy, Carolyn Rosebrock, Sonia Herbert, Rita Jaramillo, Joyce Hester, Ora Kidd, Eleanor Ybanez, Gayle Taylor, Ramona Trevino, Sandra Gorham, Shirley Baker, Nellie Martin, Estella Moreno, Sylvia Gutierrez, Beda Israel, Lydia Longoria, Vickie Parsons, Edith O'Donnell, Maria Velasquez, Diana Castro, Patsy Gray, Alice Garcia, Joyce Neuhaus, Barbara Dennis, Shirley Woodall, Irene Govella, Beverly Hall, Marilee Ware, Charlene Doubrava.

*ain't ever
in the
picture*

STUDENT COUNCIL



Eldridge Custer, Parliamentarian; Jean Billings, Reporter; Dorothy Calhoun, Secretary; Diana Dugat, President; Ben Alcala, Vice President; Carol Loudermilk, Treasurer; Miss Mamie Goen, Sponsor.



First row: Marilee Ware, Gail Irby, Shirley Clarke, Carol Loudermilk, Anna Joyce Lott, Barbara McGill.
 Second row: Eleanor Tolliver, Mary Beth McKinney, Alice Ballard, Mary Gaines, Jean Billings, Dorothy Calhoun, Nancy Jenkins, Leona Skoruppa.

Fourth row: Diana Dugat, Miss Goen, Eddie Stephenson, Tommy May, Ben Alcala, Bob Davis, Eldridge Custer.

TEEN-AGE LIBRARY ASSOCIATION



Left to right: Violet Cox, Betty McClelen, Shirley Roberts. Second row: Gwen White, Patsy Gray, Bernice Isaacks, Mary Ann White, Jamie Duffy, Gloria Godkin.
 Top row: Mrs. Gertrude A. Kellogg, Sponsor; Shirley Walch, Allene Bast, Billie Klett, Patricia Range, Mary Jane Love.
 Not shown: Clifton Downs, Johnie Kircher, Scottie Klett, Nell Lawson, Dorene Parsons, Mildred Williamson, and Juanita Collinsworth.

O
F
F
I
C
E
R
S



Shirley Roberts
 Vice President
 Violet Cox
 Treasurer
 Betty McClelen
 President
 Nell Lawson
 Secretary



KEY CLUB



Top row, left to right: Oscar Traveland, George Cude, Eddie Stephenson, Leo Thompson, Eldridge Custer, Robert Clarke.
Second row: Jerry May, Jesus Salinas, Lionel Lozano, Tommy May, Milton Hertel.
Third row: Felix Louis, Simon Moya, Pat Cain, Billy Granberry, Ben Alcala, Duward Bradfute, Coleman Mulinix, Joe Trial.



OFFICERS

Top row: Eddie Stephenson, Coleman Mulinix, Duward Bradfute, Felix Lewis, Tom May, George Cude.
Second row: Robert Clarke, Sec.; Ben Alcala, Pres.; Billy Granberry, Vice Pres.; Simon Moya, Treas.



Joyce Booth



Natividad Garza



Beatrice Trevino



Estella Morena



Jack Compton



Curtis Gamblin



Dorothy Henrichson



Mary Lou Cantu



Katherine McGilvary



L.D.E. CLUB OFFICERS—
Top row, Left to right:
Nellie Martin, Sec.-Treas.;
Pat O'Neil, Reporter. Bot-
tom row: Pat Mussett, Pres.;
Jamie Duffy, V. Pres.;
R.-D.E. Co-ordinator, Gerald
E. Starr.





Left to right
Judy Cox
Ann Haskins
Sally Beard
Nell Lawson
Bette Powell
Bobbie Womack

MORNING

OFFICE STAFF

AFTERNOON

Left to right
Evelyn Barta
Ruth Morrow
Shirley Casey
Sylvia Lewis
Carolyn Hopkins
Not shown
Shirley Youngblood
Margaret Traveland



S
T
A
M
P



C
L
U
B

Top row, left to right: Anthony Wingenten, Linda Arnold, Ann Haskins, Bernice Issacks, Frances Doubrava, Sue Brown, Cana Glover, Mary Jane Love, Robert Hill, and Mrs. Gertrude Kellogg, Sponsor. Bottom row: Pete Collinsworth, Gene Herod, Bobby Wingenter, President; Margaret Travland, Secretary; Billie Raeburn, Eugene Sweet, and Johnnie Hirst. Not shown: Carol Loudermilk, Vice President; Virgil Youngblood, Teddy Glover, Jimmy Hancock, and Joyce Hester.

S
A
F
E
T
Y



P
A
T
R
O
L

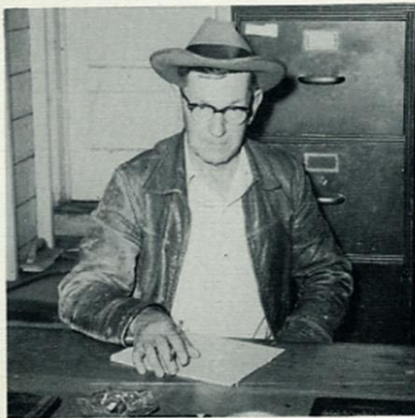
John Kircher, Fermin Meza, Dennis Butts, Scotty Klett, Bruce Hill, Anthony Wingenter, Pete Collinsworth, Eldridge Custer, Lieutenant; Robert Hill, Captain; Liborio Lozano, Lieutenant. Not shown: Mr. David Green, Sponsor; Pete Reyes, and Leonard Garza.

CAFETERIA STAFF



Left to right: Alberta Farris, Zaragazo Rodriguez, Clara Huddler, Mary Rodriguez, Lillian Rupe, and Miss Leslie Ory, dietician.

M
A
I
N
T
E
N
A
N
C
E



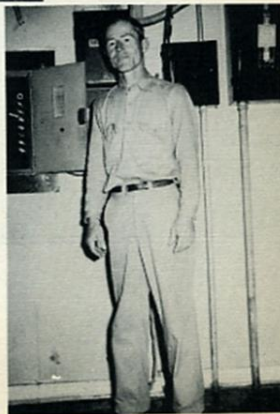
D
E
P
A
R
T
M
E
N
T

MR. GUY PRATER



MR. ADAM BERGER

MR. AI BLESSING





Sirens

ADS

N.S. EVERETT



Established By J. C. Burrows

EIGHTEEN NINETY THREE

BEEVILLE, TEXAS



McCORDS
To Class
of
'53
LUMBER COMPANY



WILLIAMS INC.

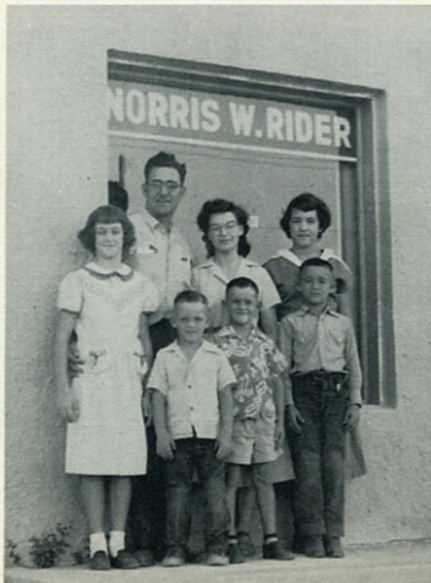


BEEVILLE PUBLISHING CO.

NORRIS

W.

RIDER



Insurance

Service

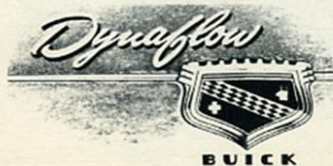


HALL'S
Established 1899
BY SID HALL



COMPLIMENTS AND CONGRATULATIONS
to
THE CLASS OF 1953
from

The Two *Joe's*





NEWSOM'S



B
U
I
E
S



S
A
D
D
L
E
R
Y

Beeville

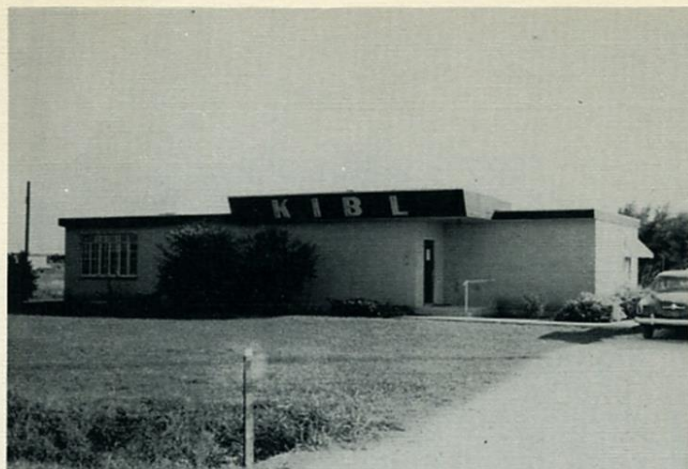
FEED & SEED COMPANY



FARM & RANCH HEADQUARTERS

Buyers of Farm Produce





KIBL



SCHULTZ PHARMACY



Your Health
IS OUR
BUSINESS

Ballard Drug Store

Joe Richards,
OWNER

OUR CUSTOMER IS ALWAYS RIGHT

Phone 45 & 72

Beeville, Texas



DAIRY QUEEN



American Cafe

"WHERE ALL THE PEOPLE MEET"

EARL & SMITTY

Tomorrow's future Starts Today . . .

The type of leadership our country will have in the years ahead is being determined today by the young men and young women of Beeville High School . . . and thousands of other students in the schools of our Nation.

Initiative and enterprise, pride in individual accomplishments, leadership in studies and on the athletic field are attributes that every student will carry into adult years.

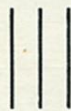
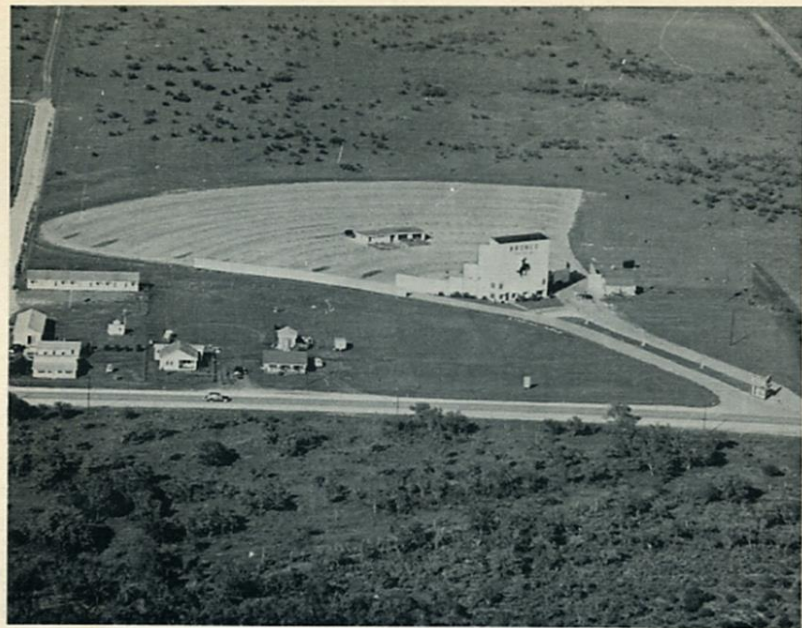
Our company has tremendous faith in the future because we have unbounded confidence in the young people who will utilize in later years those lessons of perseverance and principles of good citizenship which are being developed in their various school activities today.

UNION PRODUCING COMPANY

A Subsidiary of

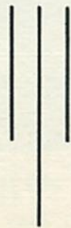
UNITED GAS SERVING THE

Gulf South



CONGRATULATIONS SENIORS

The Bronco



CONGRATULATIONS TO SENIORS OF '53

BECKNER TRACTOR SERVICE

DOZER WORK

BRUSH CUTTING

Phone 1516



*Dear Edith,
you're a
mighty swell girl
and every time they
come that way baby
and I say 5-3 & every body
else will lower ya.*

Salloway Mortuary

*Always,
Aggie*
PHONE 44

409 N. TYLER

GIFTS FOR ALL OCCASIONS

Phone 188

Beeville



COQUALLA'S
Better Things for Better Homes

FOR DELICIOUS FOODS

KOHLER



Coffee Shop

COMPLIMENTS TO THE CLASS OF '53



COMET FOOD STORE

Quin Motor Co. " " " "

OLDSMOBILE

ROCKET-FUTURAMIC-HYDRA-MATIC

MOST THRILLING "NEW THRILL" OF ALL!



The Parisian



Distinctive Apparel for Women

308 N. Washington

Telephone 779

Beeville, Texas

WISE'S FRUIT MARKET

215 N. St. Marys
PHONE 1009

REIBE'S KITCH-INN

311 Claybourne St.
PHONE 1909





McGilvary Lease
SERVICE



"Anywhere, Anytime"



❧ CONGRATULATIONS SENIORS '53 ❧

●
Briscoe
NEWS AGENCY
Congratulations Seniors
●

◆◆◆◆
PAUL'S
CLEANERS and TAILORS

One Door From Post Office
TELEPHONE 68

Cut Rates for School Students



☞ **Marye May Flower Garden** ☞

Phone 575

●
ODORLESS
DRY CLEANERS

◎
"Where Cleaning Is An Art"
324 N. Washington St.
BEEVILLE, TEXAS

●
Compliments of the
HOUSTON
NATURAL GAS COMPANY
●



Rialto Theatre



GOOD MATTRESSES
MEAN
GOOD SLEEP

PHONE 408
"Complete
Home
Outfitters"

FINE COMFORTABLE
FURNITURE

HOME FURNITURE MATTRESS CO.

Beeville, Texas



◆ GEISLERS FOOD STORE ◆

CITY DRUG STORE

Where You Get Service

Phone 107

Beeville, Texas

VISIT OUR FOUNTAIN

● Compliments ●



COMMERCIAL NATIONAL
BANK



TO YOU SENIORS OF '53,
FIZER'S JEWELERS
say Congratulations!

Anthony's
"SERVES YOU BETTER
AND SAVES YOU
MORE"

PURITY FEED & SEED CO.

COMPLIMENTS TO THE CLASS OF '53

TESTED
FIELD & GARDEN
SEED

Hefferman at S.P. Tracks
Beeville, Texas
BEECO

STOCK & POULTRY
FEED

PHONE 577

NU-WAY CLEANERS & LAUNDRY

"NU-WAY IS THE RIGHT WAY"

108 E. Corpus Christi

Beeville, Texas

Ben Franklin
STORE

Beeville's Newest 5 & 10
208 N. WASHINGTON
Beeville Phone 1160

Compliments of
SALTZMAN BROTHERS
"The Family Store"
Beeville, Texas





DEDICATED TO SENIORS OF '53



FIRST NATIONAL BANK

BEEVILLE, TEXAS
MEMBER F.D.I.C.

Beeville Boot & Shoe REPAIR SHOP



MOCCASINS
SHOE POLISHES
SHOES DYED

BILLFOLDS
BELTS
BUCKLES

HAND MADE BOOTS
MADE TO ORDER

Expert Boot and Shoe Repair

Box 495
BEEVILLE, TEXAS

DRY CLEANING
PRESSING
DYEING



F & A CLEANERS

301 South Adams
Beeville, Texas

PHONE 1071



HARDY MOTORS

DODGE and PLYMOUTH CARS
Dodge Job-Rated Trucks
Sales and Service
900 N. Washington
PHONE 660





STATE BANK & TRUST CO.



BEEVILLE, TEXAS





Phone 221

"EVERYTHING FOR THE AUTOMOBILE"
317 N. Washington Beeville, Texas



BEEVILLE
COCA COLA
BOTTLING CO.
Phone 169
CONGRATULATIONS
CLASS OF '53

↖ Mergele Jewelers ↗

"GIFTS OF LASTING DISTINCTION"



Diamonds—Watches—Silver

307 N. Washington
BEEVILLE, TEXAS

BEST WISHES
● BEEVILLE LUMBER
COMPANY
"The Big Building Material
Store"
BEEVILLE, TEXAS

⊙⊙⊙
EMMET MARTIN
Real Estate and Insurance
211½ N. Washington
Phone 1970 Res. 1661



Knight Insurance Agency

Insurance and Bonds

State Bank and Trust Building

Phone 567

BEEVILLE, TEXAS

CONGRATULATIONS SENIORS!



Central Drug

Phone 144



Ladis
SPECIALTY
SHOP

Phone 617

It's the
● DUCK INN

for
Pit Barbeque

Plate
Lunches

or

by the
pound

JOHNNIE and LYMAS LANGLEY, Jr.



COMPLIMENTS
of
**WALKER FUNERAL
HOME**



COMPLIMENTS



Powell's
CONOCO SERVICE STATION



RAYMOND T. POWELL
Owner

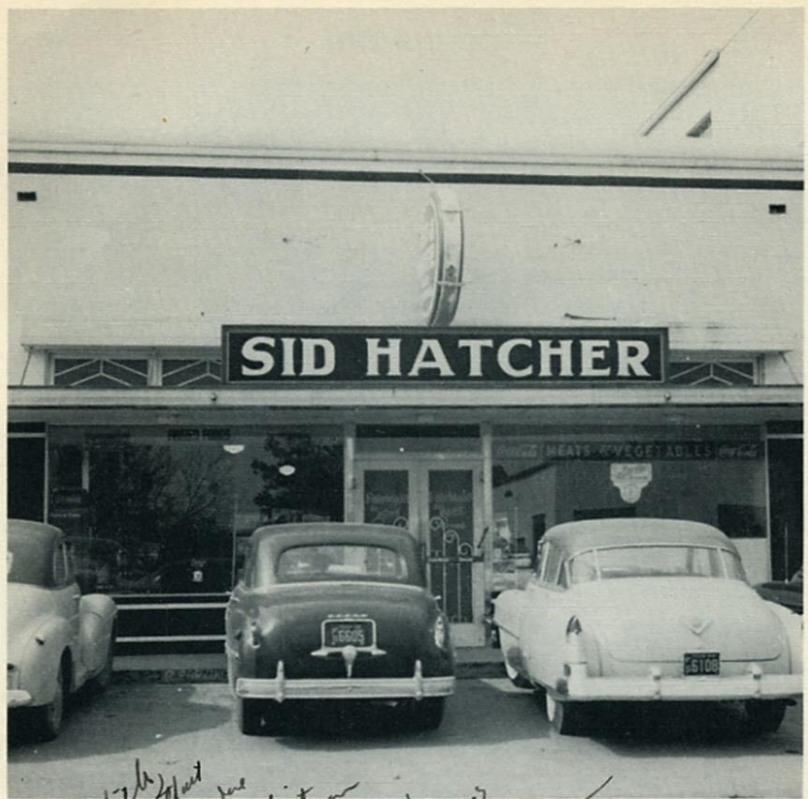
Phone 727



315 N. St. Marys

"YOUR MILEAGE MERCHANT"

*Dear Edith
Here's wishing
you all
the luck and
happiness in the
world.
Love ya
Jennie*



*I see little
I hope that
what I say won't make
you mad. I want to
clean it up in my
chase it up. I want to
a good year. I want to
that it can't be better.
Dear wa for*

**Sid Hatcher's
RED & WHITE GROCERY**

*the
needs?*

John



COMPLIMENTS OF



J. C. Penney Co.





Hunt Auto Company



SEE IT NOW



The New American Car



With the European Look

1953 STUDEBAKER

**BRAND NEW CHAMPION !
BRAND NEW COMMANDER V-8 !**

A Joy to Drive

Thrills Galore

YOUNG AUTO CO.

BEEVILLE

S
H
A
M
R
O
C
K



C
A
F
E

"Where Oil and Cattlemen Meet, and the Trojans Eat"



Lack's

◆ CHESTER'S ◆

New & Used Cars



"WHERE CARS ARE BOUGHT AND SOLD"

Phone 113 or go by at 409 North Washington,
down town Beeville



"A Good Deal in Every Deal"

Dear Edith,

Here's wishing you the best of everything.
You are a wonderful girl and will go
places. Luck to you.

Louana
Fish '53

COMPLIMENTS OF
Central Power & Light
BEEVILLE, TEXAS



H
I
G
H
S
C
H
O
O
L



A.
C.
J
O
N
E
S

HAUSE & HALL MEN'S WEAR
BEEVILLE, TEXAS



Beeville,

DUNN BROTHERS

Texas



Beeville,

GUARANTEE PLUMBING

Texas



FLOWERS FOR ALL OCCASIONS
SHRUBS FOR THE HOME

San Antonio Hiway

Phone 974



ZIMMER FLORAL and NURSERY



Will be *Donnell*
 no one knows each other
 for a long time, so lets
 meet at this & good luck to
 best wishes & good luck to
 a girl who really deserves it.
John

**Walden's
 CAMPUS
 STORE**

SCHOOL SUPPLIES
 COLD DRINKS
 ICE CREAM
 CANDY



"I'm Getting Cuter Every Day"



"Why I Prefer Orangedale Women
 Over Any Other Women"

●
**H. E. B.
FOOD STORE**



CONGRATULATIONS
TROJANS
1953

Compliments of

**ROBERTS
and
McKENZIE**

WHOLESALE & RETAIL
Beeville, Texas

Congratulations to
the Senior Class
of 1953 from

●
**SMITTY'S
Grocery**

●
500 East Bouré St.
Beeville, Texas
Phone 844

KEY TO SENIOR BABY PICTURES

1. Sally Jenkins Hutchins
2. Carolyn Barber
3. June Gee
4. Leroy Hadwin
5. Dauris Jackson
6. Darla Kaye Hall
7. Ben Alcala
8. Jamie Duffy
9. Jim Roy Stephenson
10. John Martin
11. Barbara Malone
12. Katherine McGilvary
13. Dorene Parsons
14. Marilee Ware
15. Bill Granberry
16. Cynthia Perkins
17. Bette Ray Powell
18. Dorothy Calhoun
19. Nell Lawson
20. Diana Dugat
21. Judy Cox
22. Jean Billings
23. Duward Bradfute
24. Joyce Boothe



Best of Luck
and best wishes
always.
Best of luck

Good luck and the
best to you always. I
leave you Love and have
expected photo of the Senior.
Love,
Brynn

Oscar

Edith she had luck
and happiness in
the year to
come.

With
Love
Kisses
Dad

Here is hoping you
get out a lot sooner
than I did
Love
Lew
Traylor

Class
Edith

Best wishes
and good luck to
you always. I
leave you Love and
a long way.
miss you
Love
Deana

Dear Edith,
I've had loads of
fun all these years to
gather. Our big one is
yet to come. Never forget
our good times. Remember
the prom decorations and all. He'll
never forget those million
permits, cheese sandwiches.

P.S. Eat a pimento
cheese sandwich for
me next fall.

J 1
R 5
S. 3
Love,
Cherie

Here's to
a very sweet
girl. Always
keep smiling!
Annie Joyce

Dear Edith,
Good luck and much
happiness to a swell
gal.
Patty - Fisk 52'53

Here's hoping
you stay as sweet
as you are now. Best
of luck.

Love always
Frances Rice
Jan. 52-53

Edith,
It's really been fun going
to school with you.
You're a real nice
girl. Best of luck
Billy & Ernie

Best of luck to a
sweet senior. Be sure
you get the freshmen
next year. I'll really
be on your side.
May lady - luck shine
your way always.
Shirley Hamilton
Soph 52-53

- 510
UM
Ages 52-53

"Edith,
the best of every-
thing to a swell class -
Hope that you
make it in life.
Love always
Shirley Hamilton
Jan. 52-53

Dear Edith,
I have
enjoyed going to
school with you
this year. Hope to
see you next year!
Best of luck to a senior,
Albert Lee

Edith,
Stinky, all kidding aside,
I will miss you next
year. I always enjoyed
funing and fighting
with you and I'll
never forget those "wild"
Basket Ball games. Good
luck to a swell buddy
and keep that cute
face smiling! It's
maad becoming!
Love ya,
July '53
(Dw 53)

A LITHOGRAPHED

Taylor-made

YEARBOOK

DALLAS • TEXAS

Sets of luck to you.

Shirley

Dr. 53

Best wishes
and good luck
to a very nice
gal. Keep up your
fine work.

Always
Simon

Dear Edith
The best of luck
always to you
I would love
to enjoy being in
class with you
Margaret
Talbott

E. Edith -

When you think
of me you'll probably
think of Dimento Cheese
No kidding don't forget a
one. Best of every
thing to you.

Love ya

Judy

Dr. 53-53

-Edith-

It sure has been
a lot of fun this
year with you to
live with every thing up
Hope you get the
best of every thing
good luck.

Mary

Edith,

Good luck in your
N. year may it
be the happiest year
of your life.
G. K. S.

Edith,

It's been fun
having you in my
P. E. class this year.
See you next year.
Shirley
Broder

Always
to a small girl.

Bernard

It's ever nice having
you in my class!
Best of wishes and
luck.

Best of luck and
many happy days
ahead of you.

Best of luck always
to a small girl.

"Natchy"
504H 53

The best in the west
to a small girl from a girl.

Best wishes for us & the fishes.
E. E. Lee
Dec. 53

Dear Edith,
Here's a wishing you
good luck always.
Be sweet & I'll see
you next year.
Love you
Kathryn Fish '53

Best of luck
Always - Lynn

Joan D.

Dec. 53

Always remember
me and to D. in Geometry

Best of luck to
a real cute gal!
I've really enjoyed
having history with you.
Edith
Shropshire

All the best of
everything to a real
sweet girl who
deserves it.

Lynlin

Best wishes &
Best of Luck
Babs

Dear Edith
Best of luck to you &
your family. This year has
a little trouble trying to
run your and I'll be glad to
th. Prom. Mail it to all our
and for all Dec. on together, you
was. Good!

Always remember
me and to D. in Geometry

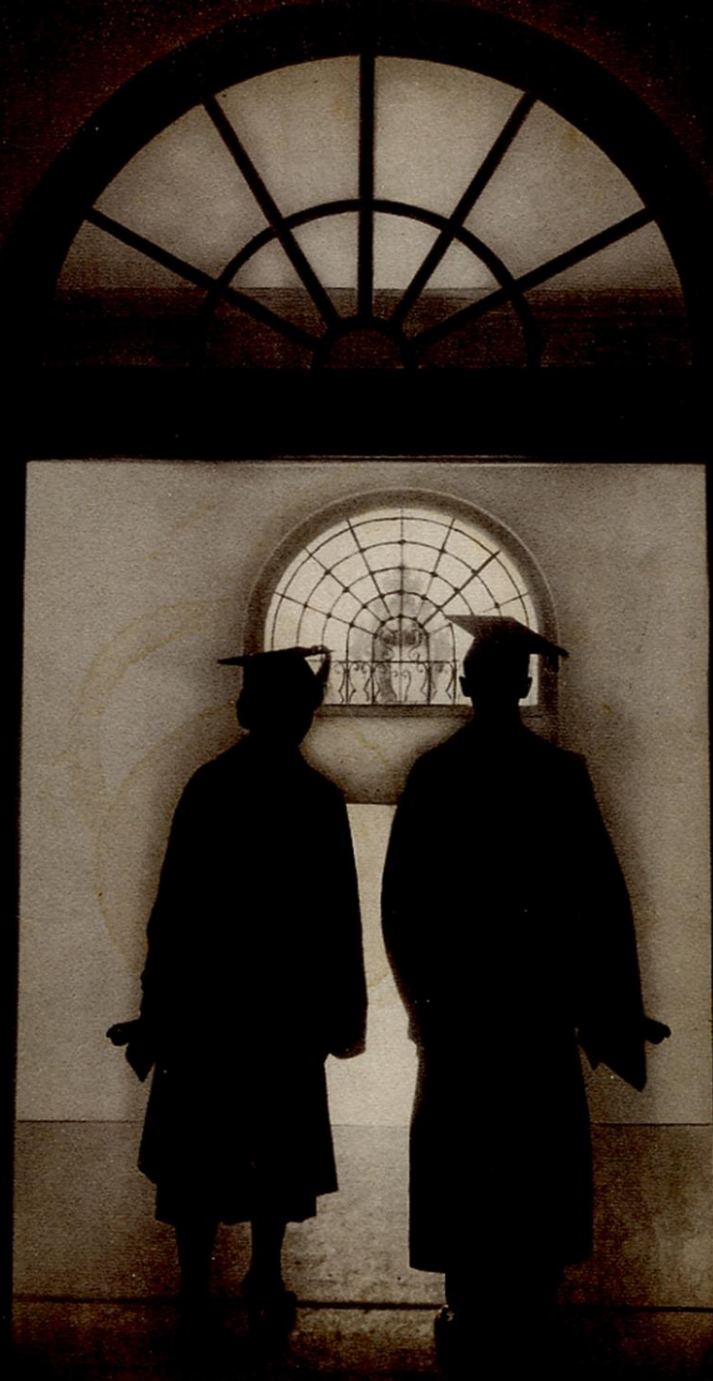
Best of luck to
a real cute gal!
I've really enjoyed
having history with you.
Edith
Shropshire

All the best of
everything to a real
sweet girl who
deserves it.

Lynlin

Best wishes &
Best of Luck
Babs

Dear Edith
Keep that good work
up in the living room. Good &
happy New Year!
I wish you a good year.
Love you
Joan D.



all a gal
friend for always
lots of luck
always to
and always
CPRO

Best of
luck to
you, Edith -
one of the
sweetest girls
ever known.
Keep whipping
it all

Dear Edith,
I have enjoyed
going to school
with you. You
are a very cute
& sweet girl.
Be good & I hope
you have as
much fun next
year as I've had
in my senior
year.

I think
you are
a very
sweet
girl that
way
Robert

Dear Edith,
Best of luck
to a sweet gal.
I wish you
the best in
everything
Love
Becky

Best of luck
to the best.
Love ya' lots,
Cynthia

Dear Edith
I have
sure had fun
looking for-
ward to see you.
Love
Willie

Dear Edith Ann,
I have known you
for something like 5
years, and you have
been swell, all of that
time. I remember the
first time I saw you,
even. We still have 1
more big year to go,
and I hope we'll be
friends again next year
Best luck
Love, Lennie

TROJAN SUPPLEMENT

JUNIOR PLAY — March 13, 1953

"Excuse Me Please"



BOB BRANTLEY, a timid and girl shy young man TOMMY MAY
 MRS. MARY WHITSON, proprietor of a rooming house MARY JANE LOVE
 NANCY STARLING, a pretty girl who lives at Mrs. Whitson's LINDA ARNOLD
 GERALDINE MONKS, man-crazy and anxious to marry DOROTHY KUBALA
 GOLDIE EICHELBERGER, fat, good-natured, about 50 SHIRLEY CLARKE
 JACK MILLER, nice looking young man about 24 BOBBY WINGENTER
 JUDY LONG, a girl-about 20 engaged to Jack M. SALLY BEARD
 BILL REYNOLDS, roommate of Jack Miller's JERRY GRIFFEN
 LIL GRAHM, friend of Judy's engaged to Bill DOROTHY CHEW
 OFFICER HOGAN, a city traffic policeman ARTHUR MABRAY
 DR. GRAYSON, a kind, agreeable physician WALTER CHESSHIR
 THADDEUS HUCKABEE, a funny-looking man of 40 BILLY BERNING
 DORA, Mrs. Whitson's stupid-looking maid RUTH MORROW
 LINDA CRANE and LOIS HALL, pretty girls about 20 GAIL IRBY and ANN HASKINS
 ED MARTIN and JIM SMERRELL, friends of Linda and Lois GEORGE BLACKMON and EUGENE LEE



SENIOR PLAY — April 17, 1953

"Love Is Too Much Trouble"

TOASTY, motherly and harassed proprietor of the Poison Pot BETTY McCLELEN
 CONNIE ASHTON, college girl working her way through SHIRLEY WALSH
 JOE BURKE, a college boy with troubles BERNARD HENRY
 MONICA BATES, a high school senior looking for atmosphere DAURIS JACKSON
 EBB DUNHAM, happy-go-lucky college girl BARBARA MALONE
 FLO DUNHAM, Ebb's sister BETTE POWELL
 PINKY HAMILTON, Joe's chum, also with troubles BILLY GRANBERRY

MRS. J. WORTHINGTON BATES, Monica's mother DARLA KAYE HALL
 OGGY McCLOSKEY, a student with a scientific theory ELBERT BROWN
 SHIRLEY BRADFORD, a campus belle DOROTHY CALHOUN
 SUGAR LOU JACKSON, a college girl with ruffles and a southern accent JUDY COX
 DR. PILSEY, President of Ivy Gate College JIMMY MCGREGOR
 MISS EMILY ROSS, Dean of Women JEAN BILLINGS
 CLIFF HAYWARD, a well meaning band leader ROBERT CLARKE

1953 BASEBALL TEAM



Left to right: Ronnie Lehman, Manager; Charles McMahon, Raphael Garza, Byron Bradfute, Ben Alcala, Coleman Mullinix, Jim Roy Stephenson, Duward Bradfute, Bobby Johnson, Leo Thompson, Paul Conrad, Bill Granberry, Don Bryan, Jeff Goss, Bat Boy; George Blackman, James Traftron, Arthur Baltazas, Mike Garcia.



PITCHERS
Conrad
Stephenson
Garza

HENRY JACKSON
Coach

GAIL ALLISON
Assistant Coach



Seniors on the Team

1953 RECORD

TROJANS	OPPONENTS	
6	Sinton	0
14	Sinton	8
8	Taft	3
6	Taft	1
18	Robstown	1
0	Miller	3
8	Miller	0
7	Goliad	6
2	Yoakum	6
0	W. B. Ray	4
15	G. West	0
7	Robstown	3
3	Sinton	2
5	Robstown	2
6	Falfurrias	2
3	Taft	7

TRACK LETTERMEN

JEFF CURBO—Coach



G
R
A
N
B
E
R
R
Y



L
O
Z
A
N
O

BILL GRANBERRY—1st Place Shot Put, 1st Discus, 4th High Jump, 3rd 440 in District Meet, 1st Shot Put, 2nd Discus in Regional Meet, 4th Place Shot Put in State Meet.

LIONEL LOZANO, Capt.—1st Place in Mile in District and Regional Meet, 4th Place in State Meet.

PAUL CONRAD—4th Mile Relay in District Meet, Ran Open 440.

DUWARD BRADFUTE—4th Discus in District Meet, Put the Shot.

BERNARD HENRY—3rd Discus in District Meet, Ran 440 and Put the Shot.

BUDDY MCKEE—4th Mile Relay District Meet, High and Low Hurdler.

JERRY FORD—High and Low Hurdler.

BILLY BAKER—High and Low Hurdler, Ran 880.

PAT CAIN—4th Mile Relay District Meet.

JERRY GRIFFIN—1st 100-Yard Dash, 2nd 220, 4th Broad Jump,

3rd 440 Relay in District, 4th 100, 4th 220 in Regional.

GEORGE BLACKMAN—4th 220, 3rd 440 Relay in District.

LYNN STANLEY—1st Broad Jump, 3rd 440 Relay in District,

3rd Broad Jump Regional.

FREDDIE PATTY—Ran 880.

R. A. HALL NATIONAL HONOR SOCIETY

MISS IRENE B. OLIN—Sponsor

CHARTER MEMBERS

Ben Alcala
Jean Billings
Dorothy Calhoun
Robert Clarke
Eldridge Custer
Jamie Duffy
Diana Dugat
Mary Gaines
Dana Glover
Billy Granberry



Shirley Roberts Hatcher
Gail Irby
Dauris Jackson
Carol Loudermilk
Lucille Laughter
Nell Lawson
Mary Jane Love
Mary Margaret Nutt
Betty McClelen
Alicia Salazar
Shirley Walch

JUNIOR-SENIOR BANQUET AND PROM

May 1, 1953

The banquet, held in the Central Cafeteria, was decorated with gay flowers and a huge May Pole in accordance with their theme—May Day.

MENU

May Basket
Woodland Fowl

Fleecy Clouds with
Spring Rain

Sunshine Butterfly Salad
Spring Puffs

Blossom Nectar Evening Dew
Lovers Delight



SPACE GIRL



PROGRAM

Invocation Geo. Blackman
Welcome Mary Jane Love
Response Ben Alcala
Novelty Number Trio
Class Prophecy Billy Berning
Class Will Robert Clarke
"You'll Never Walk Alone" Barbara McGuill
Food and Fun Everybody
"May The Good Lord Bless and Keep You"
Benediction Johnny McGuill

PROM

From the banquet we all went to the gym for the Prom. We stepped into a rocket ship and were transported into SPACE. The gym was a wonderland of rocket ships, shooting stars and flying saucers.

Hanging from the misty blue sky were sparkling stars and planets. The A&I Blue Notes furnished the music and we danced to everything from "Stardust" to "Jalisco." Few of us will ever forget the magic of the 1953 Prom.



QUILL AND SCROLL

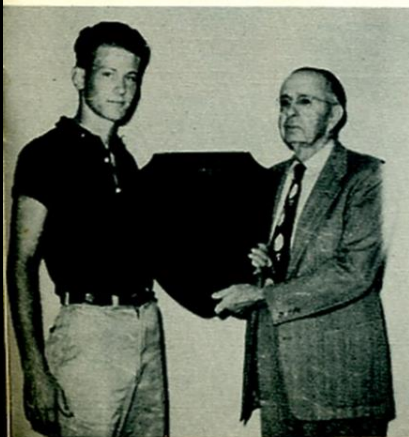
The George H. Atkins Chapter of Quill and Scroll, an international honorary society for high school journalists, was organized in 1947 for members of the Trojan annual and newspaper staffs who do outstanding work in some field of journalism.



1
9
5
2

1
9
5
3

Back row, left to right: Bernard Henry, Ben Alcalá, Durward Bradfute, Pat Cain, Jimmy McGregor, Diana Dugat, Pat Mussett, Nancy Everett, Leroy Hadwin, and John Martin.
Second row: Paul Conrad, June Gee, Vivian Garcia, Bette Rae Powell, Gail Irby, and Dauris Jackson.
Front row: Jean Billings, Jim Roy Stephenson, President; Judy Cox, Vice President; Jamie Duffy, Secretary; Curtis Gamblin, Rep.; and Dorothy Calhoun, Sponsor, Jean Dugat.



Bernard Henry receives award from Mr. Geo. Atkins.

GEORGE H. ATKINS AWARD

In the Trojan newspaper room hangs a plaque, known as the Geo. H. Atkins Annual Award, which was presented to the local Quill and Scroll chapter by Mr. Atkins, publisher of the Bee-Picayune. Each year the outstanding chapter member is presented with a nameplate which is added to the plaque. This year's winner, Bernard Henry, received the award because of his work as associate editor of the annual, sports editor of the Trojan paper, sports writer for the Bee-Picayune, and sports correspondent for the San Antonio Express and Evening News. He was also a journalism contestant at the regional meet in Kingsville where he and Jim Roy Stephenson won second place as a team.

Senior Trip To Mo Ranch



We finally made it!



Just loafing.



How about a swim?



Taking it easy.



Swimming in the Guadalupe.



On the cat walk.



The pool was fun too.



Don't fall off!



Why the big smiles?



Waiting for something to eat.



More fun!



Going for a swim?



Mischief!



Hungry, thirsty and tired.

MAY 21, 22, 23
1953



*"May the good Lord
bless and keep you
til we meet again"*