

The

Trojan



of

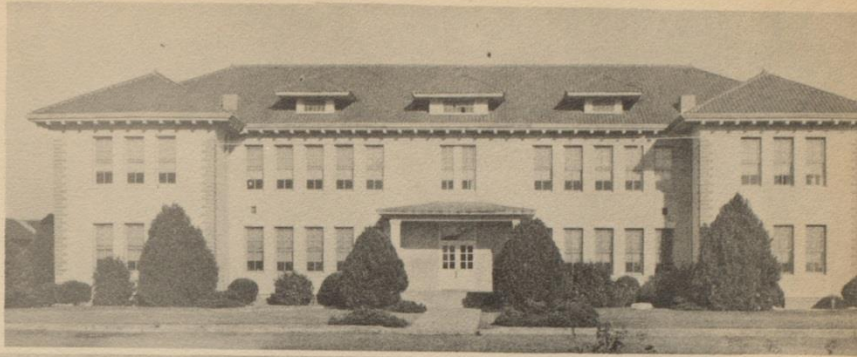
1947



*... in glorious dedication to those who follow us
May their walk down the path of the future
pave the way to the advancement of our
civilization....*

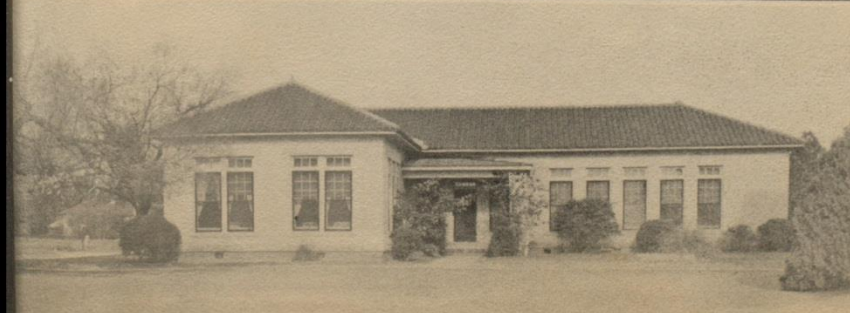
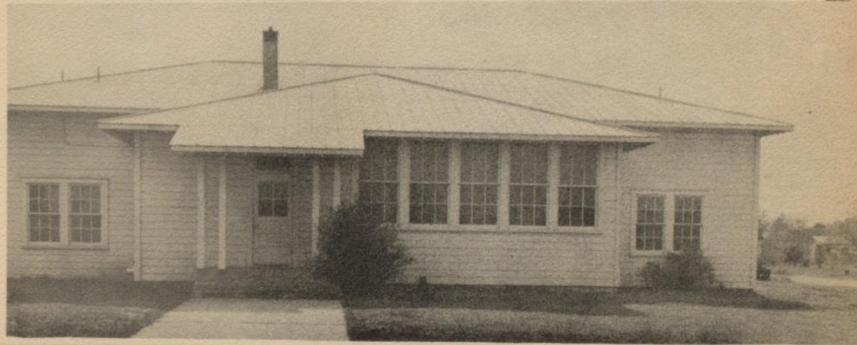
THE SCHOOL BUILDINGS

A. C. Jones
High School



Beasley
Gymnasium

Agriculture
Building



H. E. Cottage



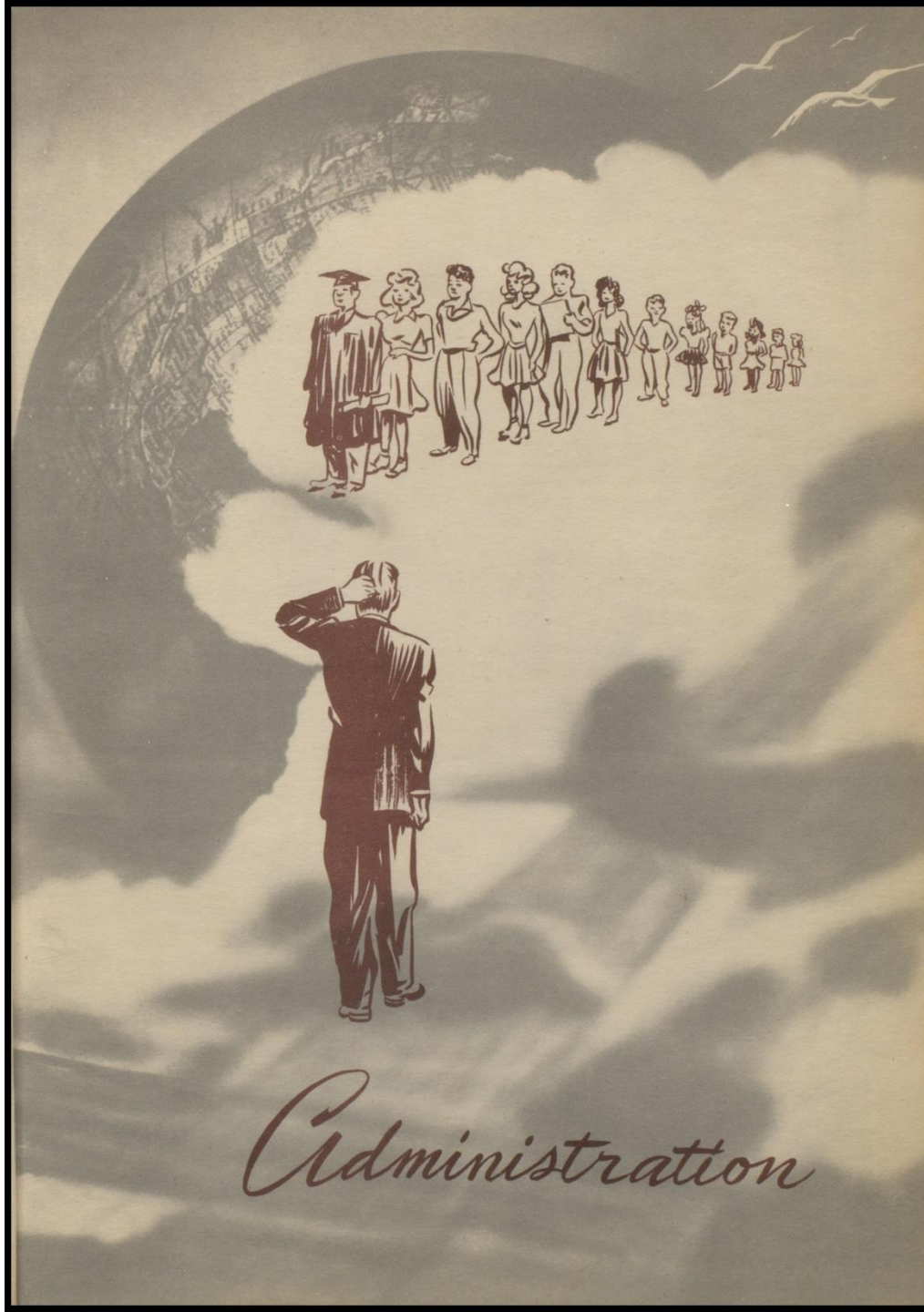
Editor	Ann Hicks	Lay-out Editor	Betty Beasley
Asst. Editor	Joan Neumann	Asst.	Margaret Barber
Business Mgr.	Bill Jenkins	Sports Editor	Al Adair
Asst. Mgr.	Bobby Cox	Asst.	Harvey Nelson
Art Editor	Freddie Frels	Social Editor	Eve Reagan
Photographer	Mickey Deutsch	Asst.	Pat Cox
Asst.	Paul Schulz	Feature Editor	Betty Moore
		Asst.	Jackie Hirst

Annual Staff

OF 1946 - 1947

We, the Annual Staff of the 1947 Trojan, in presenting this yearbook to you, have earnestly tried to give our classmates a book which in years to come, will be treasured by each as a record of happy days spent together, both in the school rooms and on the campus.

The work in preparing this volume for you has been instructive as well as enjoyable, but if we have failed to reach our goal, we ask your leniency in judgment, for we have done our best . . .

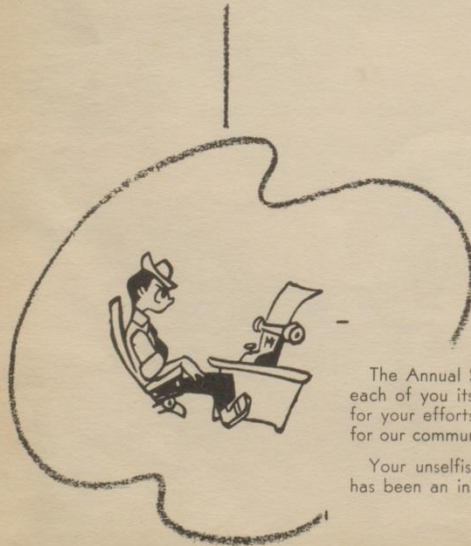


Administration

• BOARD OF EDUCATION



From left to right: J. C. Cates, Superintendent of Schools; J. D. Chapman; S. R. Davis, Vice-president; W. H. Jenkins; R. A. Hall, President; T. A. Hunt; C. C. McCall, Jr.; Paul Bauer, Tax Assessor Collector, and Secretary of Board; C. E. Farmer, absent.



The Annual Staff, on behalf of the Beeville Public Schools, expresses to each of you its sincere appreciation for your interests in our welfare and for your efforts to provide us with the best possible educational program for our community.

Your unselfish interest in furthering the cause of American democracy has been an inspiration to us.

Editor-in-chief



Mr. J. C. Cates • SUPERINTENDENT •



May I extend congratulations to the Trojan Staff on the publication of this fine yearbook which so adequately expresses the school life of A. C. Jones High School.

It is indeed a pleasure to work with such a fine group of students as we have here in our schools. Because of the high type of students, teaching personnel, Board of Education, and the people of the community, we have attained a high standard of achievement in this school.

Sincerely,

Jack C. Cates



Today we hear much talk of "education for one world" or "education for an atomic age". The great World War II which we have witnessed reminded us of our need for education in these two things. Certainly all of us would agree that "education of the heart" lags far behind our "education of the hands". It is not enough for us to educate ourselves as merely citizens of the United States, but we should think of ourselves as citizens of the world. Each of us should strive to see that man everywhere has the right and opportunity to advance along life's pathway to the best of his ability. It is not enough that we should be democratic, but we should accept responsibility and conduct ourselves in a manner that makes us worthy of living in and enjoying this great Democracy.

J. PORTWOOD ALLEY

J. P. Alley ◦ PRINCIPAL



To help the students of A. C. Jones High School to select a pattern of life that will create for them lasting happiness, that will arouse within them a sense of responsibility to their God, to their fellowman, and to their nation; to help them select a field in which they can work and be successful and useful is my aim and purpose as counselor.

MAMIE GOEN

Miss Mamie Goen
COUNSELOR ◦

o The FACULTY



J. Portwood
Alley



Lottie
Bristol



Christine
Brown



Mildred
F. Cox



Jean
Dugat



Monroe
Fairley



Mamie
Goen



Pearl
Harrell



Jean
Kaiser



Dorothy
Ledbetter



Mildred
Mund



Jo Jack
Pearce



Byron E.
Walters



Ann
Wiseman



Loren R.
Wiseman



Dawn
Young





Seniors



Bill Jenkins President
 Betty Bob Moore Secretary
 Margaret Barber Vice President
 Evelyn Reagan Treasurer

The SENIOR OFFICERS

S P O N S O R S



Mrs. Lano Cox Jr.



Mr. Jack Cates

ALLEN CARTER ADAIR "AL"
"YO-YO"

Football "B" 43-44
Football Varsity 44-45, 45-46, 46-47
Basketball "B" 43-44
Baseball 44-45, 45-46
Track 44-45, 45-46
Capt. Basketball team 47
President Junior Class 45-46
Annual Staff 46-47
All-school favorite 46-47



KIRBY GENE AMTHOR "BONEY"

Football 44-45, 45-46, 46-47
Basketball 44-45, 45-46
Baseball 45-46
Track 44-45, 46-47
Band 43-44
F.F.A. 44-45, 45-46, 46-47



SHIRLEY ANN ATKINSON "ATKINS"

H. E. Club 43-44
Footlight Club 45-46, 46-47
Trojan Staff 46-47
Glee Club 45-46, 46-47
School Orchestra 46-47
Library Club 43-44

BETTY JO BAIRD

H. E. Club 46-47

AMELINA CONTRERAS BALTAZAR

Glee Club 45-46, 46-47
H. E. Club 45-46, 46-47

MARGARET BERNICE BARBER

"BARBER"
Library Club 43-44, 44-45, 46-47
Vice-president Senior Class 46-47
Annual Staff 46-47
Trojan Staff 43-44, 45-46
Office Worker 43-44, 46-47



ELIZABETH GENEVIEVE BEASLEY

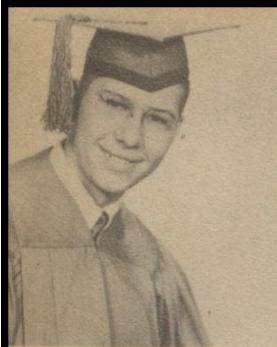
"BETTY"

Vice-president Junior Class 45-46
Vice-president Freshman Class 43-44
Junior Class Favorite 45-46
Junior Play 46
Trojan Staff 43-44, 44-45, 45-46,
46-47
Annual Staff 46-47
Band 43-44, 44-45, 45-46, 46-47



JOHN DAVID BERGER "JOHN D."

Football 45-46
F. F. A. 43-44, 44-45, 45-46, 46-47
Glee Club 45-46
Track 46-47
Basketball 46-47
2nd Vice President F. F. A. 1944



JOE KELLY BISSETT
Band 43-44, 44-45, 45-46, 46-47.



GLORIA INEZ BOYD "DOGIE"
H. E. Club 44-45
Glee Club 46-47
Footlight Club 46-47



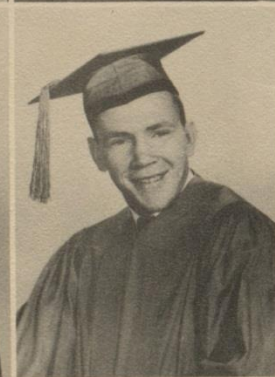
KATHLEEN BROWN "BROWNIE"
H. E. Club 43-44
Volley ball 42, 46
Library Club 45-46



MARGARET LECK BURCHFIELD
"LECK"
Band 44-45
H. E. Club 44-45
Glee Club 44-45



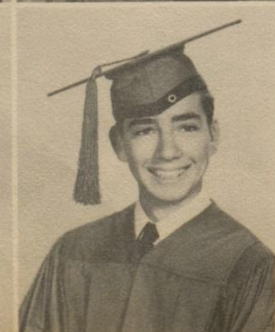
KATHERINE ROBATINE CALKINS
"ROBA" "ROBBIE"
Band 43-44, 44-45, 45-46, 46-47
Majorette 45-46, 46-47
H. E. Club 43-44, 44-45
Annual Staff 45-46
Footlight Club 45-46



REGINALD KEITH CARPENTER
"COB"
Football 43-44, 44-45, 45-46, 46-47
Basketball 43-44, 44-45, 45-46, 46-47
Co-capt. Football 45-46, 46-47
All district fullback 45-46
Trojan Staff 46-47
Band 42-43, 46-47
Most Athletic Boy 46-47
President Jr. Class 44-45



PATRICIA ANN CLARK "PAT"
"PATTIE SUE"
Band 43-44, 44-45, 45-46, 46-47
Majorette 46-47
Annual Staff 45-46
Orchestra 45-46
Footlight Club 45-46



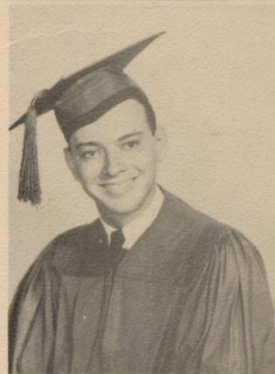
ROBERT EDGER LEE COX "BOBBY"
Best dancing boy 46-47
Band 44-45, 45-46, 46-47
Glee Club 46-47
School Orchestra 46-47
President Footlight Club 45-46, 46-47
Annual Staff 45-46, 46-47
Junior Class Play 46
Football 44-45
Trojan Staff 46-47
Library Club 43-44
Spanish Club 46-47

LOUISE DENSON
H. E. Club 43-44



MIKLOS DEUTSCH "MICKEY"
Band 45-46, 46-47
Annual Staff 45, 46, 47
Junior Class Favorite 46

GEORGE FREDERICK FRELS
"FREDDIE" "BUZZ"
Band 44-45, 45-46, 46-47
Trojan Staff 45-46, 46-47
Annual Staff 46-47
Footlight Club 46-47
Library Club 44-45
Junior Class Play 46
School Orchestra 46-47
Spanish Club 46-47



FRED VILLARREAL GARZA "FRED"
Football 44-45
Spanish Club 46-47

ROSIE MAE GARZA
H. E. Club 44-45
Footlight Club 46-47
Spanish Club 46-47



MARTHA ELIZABETH GAYLE
"GAYLE"
Band 43-44, 44-45, 45-46
Footlight Club 45-46, 46-47
Annual Staff 46-47
Trojan Staff 44-45, 45-46
Glee Club 45-46, 46-47
School Orchestra 43-44, 44-45, 45-46
Spanish Club 46-47

MARTHA SARAH GREEN
Pep Club 46-47
H. E. Club 45-46, 46-47



BETTY JOSEPHINE HADWIN
"BETTY JO"
Pep Squad 46-47
H. E. Club 43-44
Footlight Club 45-46-47
Glee Club 45-46-47
Trojan Staff 46-47



HAZEL MARIE HARRIS
Band 43-44, 44-45, 45-46, 46-47
Glee Club 46-47
Footlight Club 46-47
School Orchestra 46-47
H. E. Club 43-44
Junior Class Play 46

GWENDOLYN NELL HARRISON
"GWEN"
H. E. Club 46-47



DOROTHY MYRLE HATCHER
Band 43-44, 44-45, 45-46, 46-47
Glee Club 46-47
Trojan Staff 45-46
H. E. Club 43-44
Library Club 43-44
School Orchestra 45-46, 46-47
Footlight Club 45-46, 46-47

MARY ANN HICKS "HIX"
Band 43-44, 44-45, 45-46, 46-47
Trojan Staff 44-45, 45-46, 46-47
Trojan Editor 45-46
Annual Editor 46-47
Junior Play 46
Library Club 43-44
Spanish Club 46-47



JAMES ALFRED HOLLINGSWORTH
"JIMMY"
Trojan Staff 45-46-47
Annual Staff 46-47
Footlight Club 45-46-47

ELIZABETH GEORGIA HOLUBEC
"LIZ"
Glee Club 45
H. E. Club 46
Volley Ball 44-45



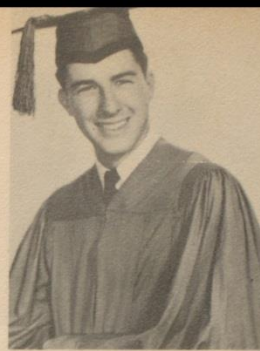
CHARLES GILBERT HUNT "CHUCK"
Football 45-46-47
Most Popular Boy 45-46
Best Looking Boy 46-47
Chief of O. A. 46
B. Team Basket Ball 45-46-47

WILMA LOIS JASCHKE
H. E. Club 44-45-46
Pep Squad 46-47
Trojan Staff 46-47
Footlight Club 46-47
Basket Ball 46-47

WILLIAM HERNDON JENKINS

"BILLY"

Freshmen Class Officer 43-44
Senior Class Officer 46-47
Annual Staff 46-47
Band 43-44-45-46-47
Footlight Club 46-47
Junior Class Play 46
Spanish Club 46-47



LEONARD HAROLD JONES JR.

"LEONARD"

Football 44-45-46-47
Footlight Club 45-46
Track 44



BARBARA JO JORDAN "BABS"

Band 44-45-46-47
H. E. Club 44-45
Footlight Club 45-46-47

EFFIE LUCILLE KELLEY "LUCILLE"

Library Club 46-47



WALTER ERNEST KINKLER

F. F. A. 43-44-45-46
Gold Key Club 46

DOROTHY MARIE LEACH

Band 42-43
Trojan Staff 43-44-47



AGNES MAXINE McCARLEY

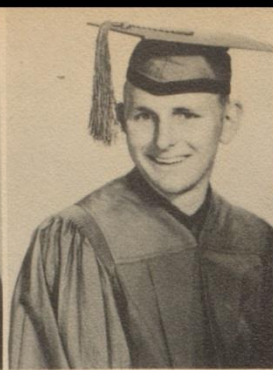
"Maxine"

Band 44-45-46-47
Trojan Staff 45-46
H. E. Club 44
Orchestra 45-46-47
Footlight Club 46-47

CLARISSA OFELIA MARTIN

"Clarissa"

H. E. Club 46-47



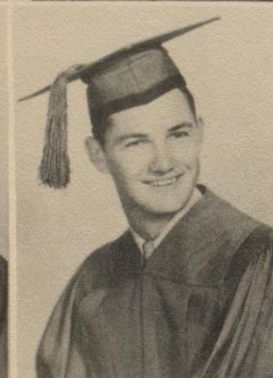
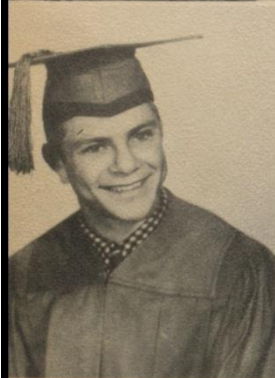
JOHNNIE JOAN MAYERS
"JOHNNIE"

ADRIAN BIRST MOORE "A. B."
Football 44-45-46-47
Basketball 44-45-46-47
Capt. of Football 46
Capt. of Basketball 46
F. F. A. 45-46
Track 44



BETTEY BOB MOORE
"BETTEY ROBERT"
Band 43-44-45-46-47
H. E. Club 43-44
Library Club 43-44
Trojan Staff 45-46-43-44
Annual Staff 46-47
Officer Worker 46-47
Secretary of Senior Class
Junior Class Play 46
Spanish Club 46-47

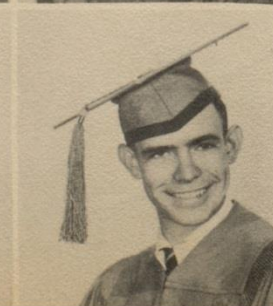
VIRGINIA DARE MURPHY "DARE"
Band 43-44-45-46-47
H. E. Club 43-46
Trojan Staff 46
Orchestra 46
Glee Club 45-46



RICHARD LEWIS MUTCHLER
"DICK"
F. F. A. 44-45-46
Cheer Leader 46-47
Glee Club 46-47

HARVEY LEONARD NELSON JR.
"HARVEY"
F. F. A. 43-44
Football Manager 44-45
Annual Staff 46-47
President of F. F. A. 45-46-47
Football 45-46-47
Basketball 46-47

JOAN NEUMANN "JOANIE"
H. E. Club 43-44
Band 44-45-46-47
Trojan Staff 43-44-46-47
Annual Staff 45-46-47
Footlight Club 44-45-46-47
Library Club 43-44
Junior Class Play 46
Junior Class Secretary and Treasurer
Freshman Class Secretary and Treas.
Drum Major 45-46-47
Spanish Club 46-47



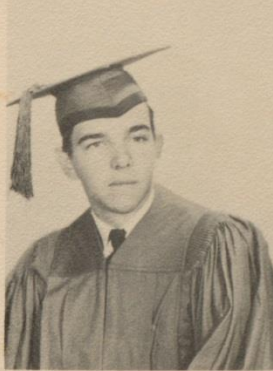
JERRY EUGENE PATE "JERRY"
F. F. A. 43-44-45-46-47
Football 46-47
Track 47

JEAN ANN PRESTRIDGE
Band 45-46-47
Annual Staff 46-47
Trojan Staff 45-46-47
Footlight Club 46-47
H. E. Club 43-44
Orchestra 46
Basket Ball 46



LORETTA JANE RAY
H. E. Club 43-44
Footlight Club 45-46
Trojan Staff 46-47
Pep Squad 46-47

CHARLES MURRAY REAGAN
"CHARLIE"
F. F. A. 43-44-45-46-47



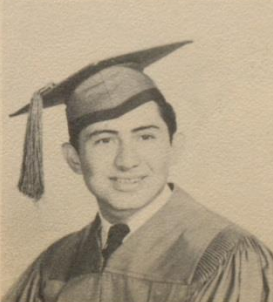
DICK LE ROY REAGAN "DICK"
Trojan Staff 46-47

GUSSY EVELYN REAGAN "EVE"
Band 44-45-46-47
Footlight Club 45-46-47
Trojan Staff 45-46
Annual Staff 46-47
Spanish Club 46-47
Treasurer of Senior Class 46-47
All School Favorite 46-47

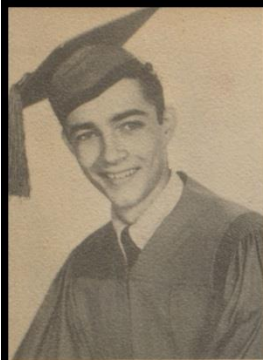


ELISA SANTOS REYES "GEORGIA"
H. E. Club 43-44
Footlight Club 46-47

JUAN SANCHEZ
F. F. A. 46-47
Football 45-46
B. Team 44

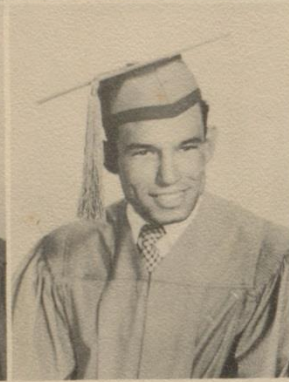


RAMONA SOUTHWELL



JOHN SAUNDERS STEELE
"JOHNNY"

MARY JOYCE SWINNEY "JOYCE"
H. E. Club 43-44
Footlight Club 45-46
Pep Squad 46-47
Glee Club 44-45



MARGARET NELL TOOMEY
"MAGGIE NELL"
Trojan Staff 45-46-47
Footlight Club 45-46
Cheer Leader 44-45-46-47
Glee Club 45-46-47
H. E. Club 44-45-46-47

ROGER TREVINO
Football 44-45
Football "B" Team 43
H. E. Club 45



RAMONA LEE WALLS "MONA"
Glee Club 45-46-47
H. E. Club 46-47
Trojan Staff 46-47
Footlight Club 45-46-47
Senior Class Favorite

CHARLES LE ROY WESSON
"CHARLES"
F. F. A. 43-44-45-46



ELVA LUCILLE WHITEHURST "ELVA"
Trojan Staff 45-46

BILLIE MARIE WILLIAMSON
H. E. Club 44-45-46
Glee Club 45-46

DOROTHY FAYE WILLIAMSON
H. E. Club 43-44



FLORENCE CONSTANCE
WINGENTER "FLORENCE"
Trojan Staff 45-46
H. E. Club 44-45

MARJORIE LEE WISE "DIXIE"
Band 45-46-47
Glee Club 46-47
Footlight Club 45-46-47



GLADYS CHRISTINE WRINKLE
"CHRIS"
H. E. Club 44-45-46-47
Volley Ball 45-46



Senior Class of '47

Motto-

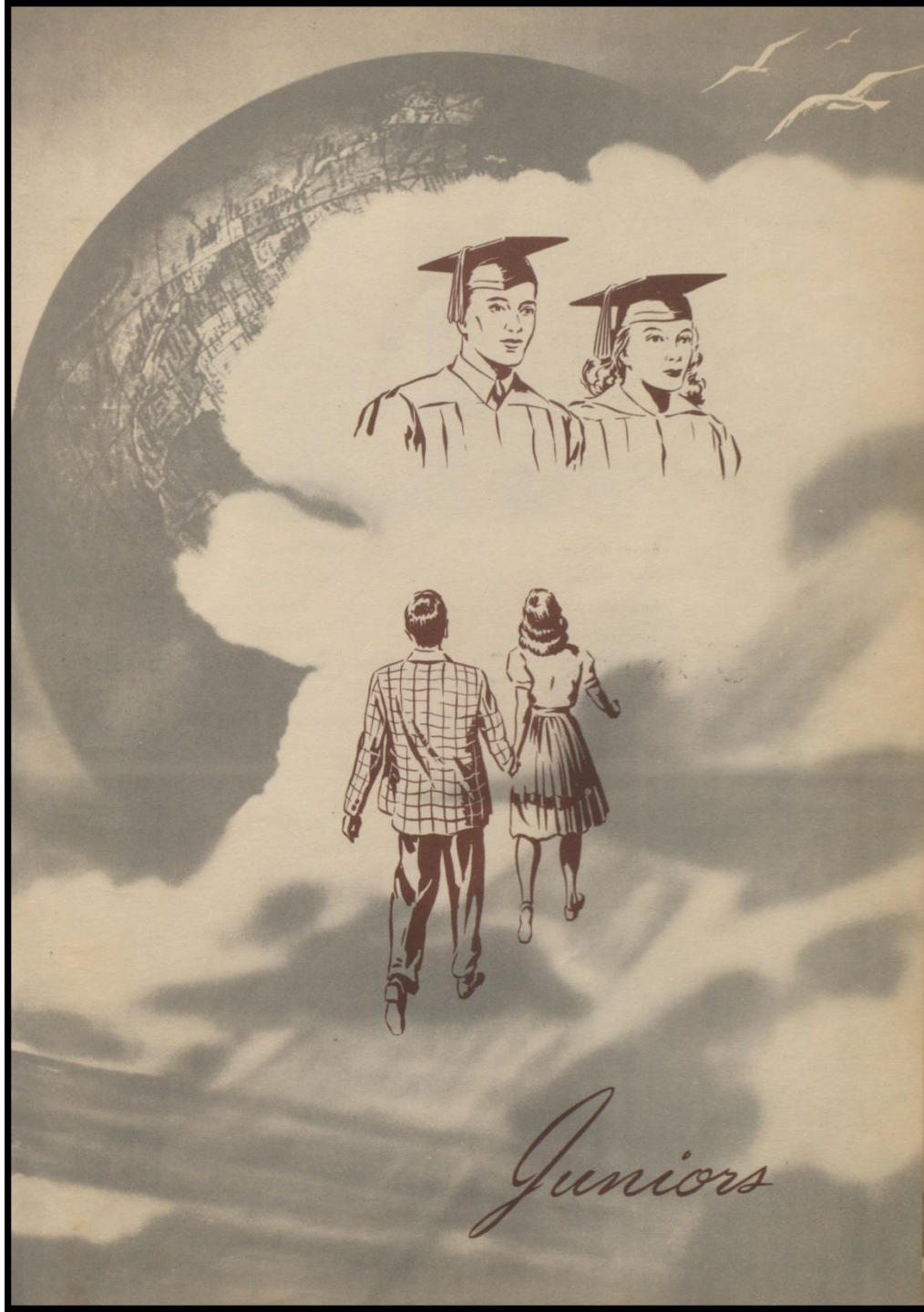
"They conquer who believe
they can"

COLORS
FUCHSIA and
BLUE

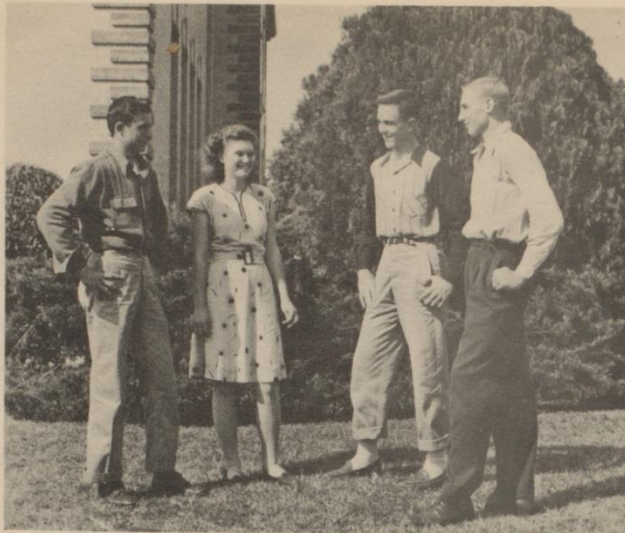
FLOWER
WHITE
CARNATION

SENIORS

"Gayle" Margaret Eve Ann Betty Bobby
 Babs Maxide Al Gloria Pat Elva Haze
 Freddie Marjorie Juan Johnny John
 Ramona Harvey Dorothy Myrle Martha "Cob"
 Jimmy Wilma John Ruth Dare Kathlene Bill



Juniors



Buddy Brown Vice President
 Ellene Hertel Secretary-Treasurer
 Reginald West Reporter
 Joe Scott Lancaster President

JUNIOR CLASS OFFICERS



Mildred Mund

SPONSORS



Mr. Monroe Fairley



Ray Nell Baird
 Margaret Barta
 Betty Ann Beasley



Jerome Boenig
 Vera Mae Boenig
 Fayette Boyetta

Buddy Brown
Alva Lee Bryan
Marilee Calhoun



Patsy Carpenter
Harry Carter
Dan Conoly



Ruth Cuff
Betty Davis
Frances Davis



Fred Dickinson
Pearl Ferguson
Betty Joyce Gamblin



Gilbert Garcia
Jeanne Gee
Madeline Gordon



Walter Harding
Marian Hardy
Robert Hardy



Delores Hatcher
Hayden Hatcher
Ellene Hertel





Patsy Higgins
Jackie Hirst
Mac Hudgins



Gene Hitchins
Betty Issacks
Tommy Kingrea



Glenn Lain
Joe Scott Lancaster
Rodney Larson



Richard Lehmborg
Arnulfo Lopez
Pauline Love



Blaine Luthringer
Fatsy Lou Mize
Deryl Morris



Ritzy McCord
Carrie F. McKinney
Billy Owens



Kenneth Parker
Joyce Marie Peacock
Samuel J. L. Pieper





Grace Roberts
F. D. Roberts
Sylvia Rudeloff



Paul Schulz
Billy Shelton
Ellis Gene Smith



Kathleen Talkington
Arlyn Tetzloff
Robert Lee Thetford



Robert Lee Trafton
Betty Traweck
Alice Trevino



Consuelo Trevino
Joan Uzzell
Julia Villareal



Mary Elizabeth Welder
Reginald West



Backstage WITH THE FOOTLIGHT CLUB



Georgia, Delores, Consuelo swing out to "I'm An Indian Too"



Pat, Ramona and Maxine, the shiek's wives and Rosie, favorite dancer



Pat and Peggy wait backstage until time for their song numbers



Pinky, Freddie, Bobby, Jerry, Joan and Harry practice "The Young Man With the Horn"



Annie Laura, Betty, Peggy, Georgia, Delores, Consuelo, Orlean — the club movie stars (?)



Peggy, Harry and Shirley in "Got the Sun in the Morning"



Joyce makes up Annie Ruth for Harem, Doreen combs her hair



Pat, Ramona, Maxine and Rosie strike another pose.



The footlight club's two leading song birds, Gloria and Gayle.



Sophomores



Nita Aldridge
Mary Alvarado
Carl J. Anderka
Nellene Baker



Tom Baltazar
Alan Beckom
Lewis Bell
Frances Berger



Irene Stewart
Bettie Booth
Maxine Briggs
Lois Bryan



Calvin Burchfield
Kenneth Burris
Tony Chesshir
Consuelo Cisneros



Margaret Nell Coleman
Jo Ann Cook
Billy Corrigan
Patricia Cox



Philemena Dolan
Lela Dubose
Charles Dunn
James Edwards

Darlene Ford

Roy Lee Freeze

Anna Garcia

Henry Hall



James Harding

Helen Harris

J. P. Harris

John Henry



Johnny Hester

La Nita Hirst

Thelma Homann

Bette Hutchins



Mildred Issacks

Jean Joines

Alfred Krause

Jimmy Leal



Lucille Leverman

Jimmy Manning

Maria Martinez

Luella Martin



Orlean McCarley

Thomas McClelen

Ralph McClung

Jerry Moore





Lynna Moreland
Donnie Morris
Santos Murray
Mary Beth Meider



Leah Miller
Una Sue Mills
Charles Mock
Frona Newman



Zora Nelson
Martha Ann Nichols
Catherine O'Donnell
Lucy Mae Pate



Dale Parker
Jakie Pruett
Peggy Prestridge
Bernard Pieper



Nanabeth Reagan
Florinda Reyes
Casimero Reyes
James Shelton



T. J. Standifield
Martha Gene Stanley
Joyce Stewart
Janie Smith

Kenneth Sullivan
Tommy Sullivan
Lillie Mae Sweet
Mary Lou Thomas



Eunice Thurmond
Juanita Vorpahl
Louise Welder
Alice Wesson



Elmer Whiddon
Edward Williams
Faye Williams
Putt Wright



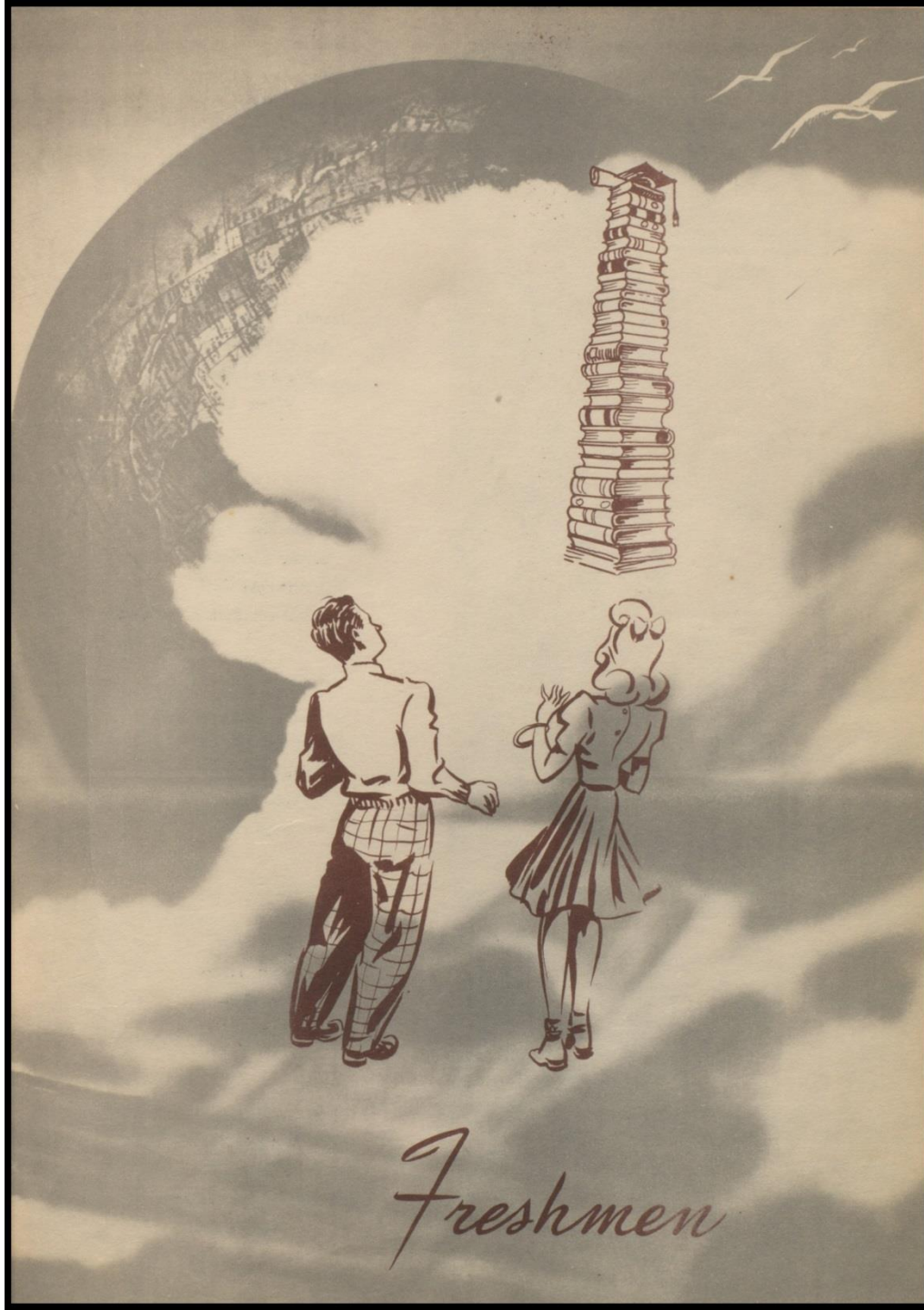
Dorothy Wynne



DEDICATION



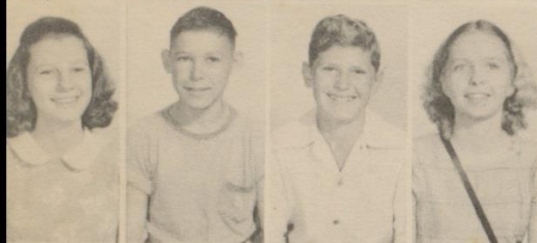
We dedicate this page in loving
memory of our friend and class
mate, *Jimmy Manning*



Freshmen



James Lee Beasley, Jr.
Jimmy Bell
Charles Billings
Betty Madge Bills



Juanita Boenig
Joe Calvin Booth
Wallace Brundrett Jr.
Wilma Lois Connevey



Jack Conoly
Jimmy Corrigan
Ada Faye Cuff
Annie Ruth de la Garza



Robert Dorsey
Harriet Farmer
Ruby Finka
Juan Flores



Betty Fox
Lawrence Freeze
Alice Galle
Robbie Garcia



Rosa Garcia
Sofia Garza
Marie Ella Geistman
Sue Goodwin

Salvador Gonzales
Gloria Gordon
Richard Green
Joe Gregorcyk



Joanne Hale
Janice Harding
Buddy Harris
Fred Cordell Henry



Carolyn Hill
Seymour Irby
Mary Ellen Jones
Robert Lawson



Hattie Grace Leach
Jimmy Lemma
Leonard Lewis
Arlen Lewis



Mack Luckie
Ninfa Maldonada
Santos Moya
Gilbert Mayorga



Amelia Molina
Alice Moreno
Clarence Mueller
Regina Mullinix





Connie Murphey
Cread McCollom
Bob Frank Nance
Marlene Newman



Mary Alice Nueraburg
Bobby Nutt
Mary Esther O'Connor
Maria Isabel Olivarez



Betty Pace
Doreen Penewitt
Beverly Range
C. W. Reynolds



Louise Roberts
Anna Laura Rossi
Julian Salazar
Felipe Salinas



Edward Salmon
Gordon Secrest
Carrie Schmidthe
Billy Stuart



Betty Talkington
Joan Tollett
Billy Traylor
Paul Trial

Isidro Trevino
Higinio Trevino
Paula Trevino
Ethel Vargas



Dorothy Waddle
Doris Marie Wagner
Robert Melvin White, Jr.
James Whitehurst



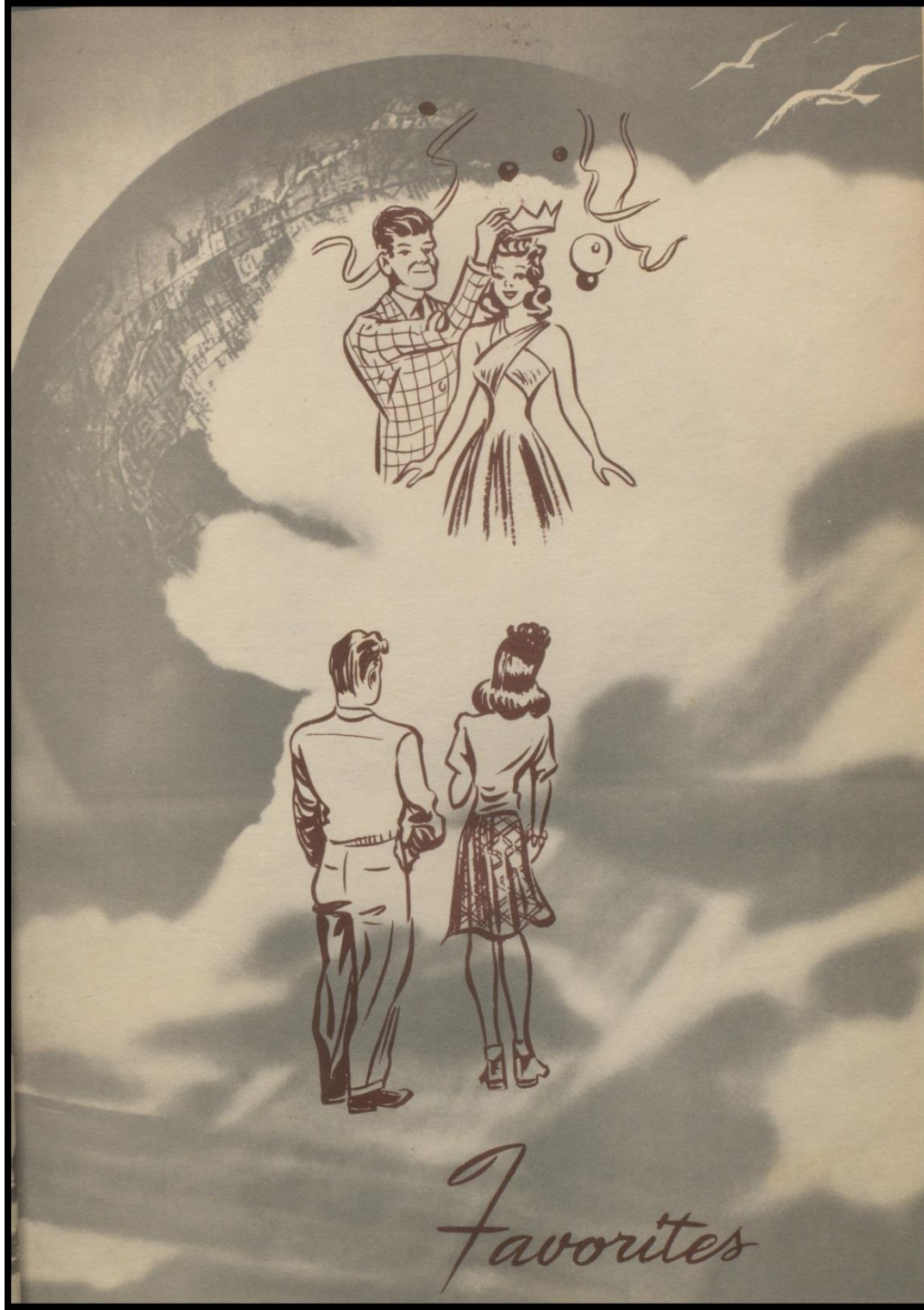
Virgil Wilburn
Ira J. Williams, Jr.
William Wingenter
Eddie Young



George Zerda
Marjorie Gibson







Favorites

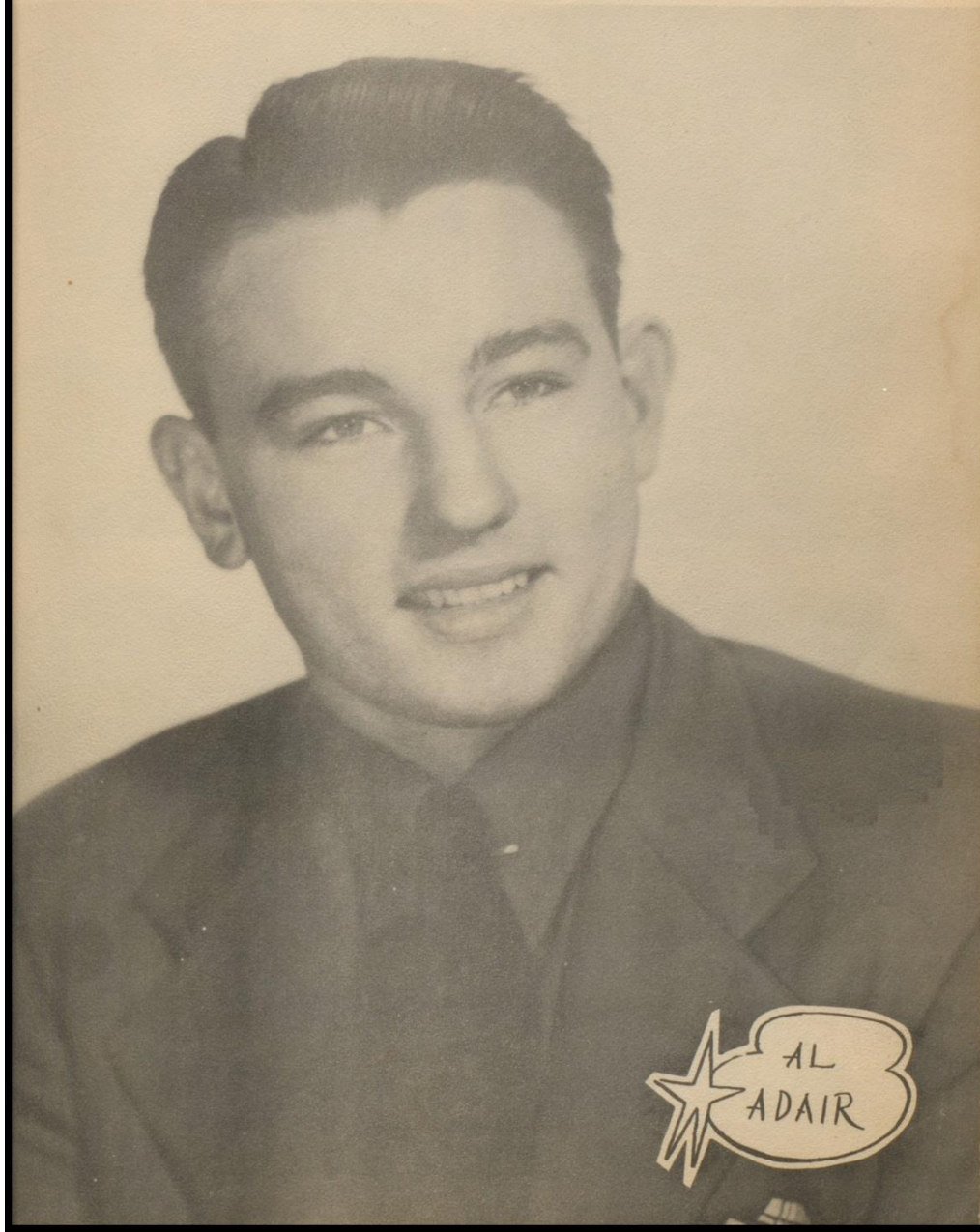
★ ALL ★

★ SCHOOL ★



★ EVELYN REAGAN

* FAVORITES *
* * * * *



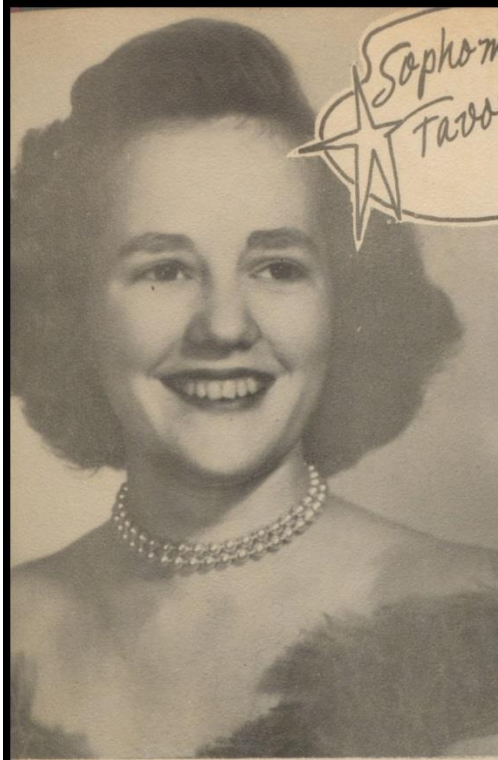
AL
ADAIR



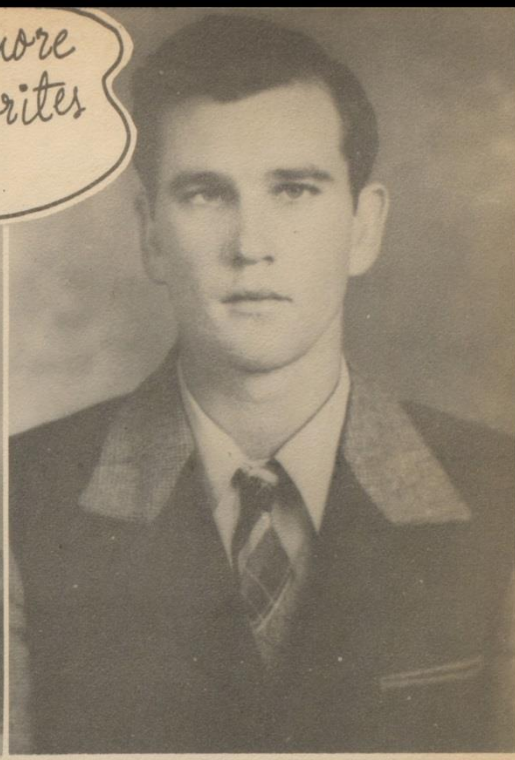
Senior
Favorites



Junior
Favorites

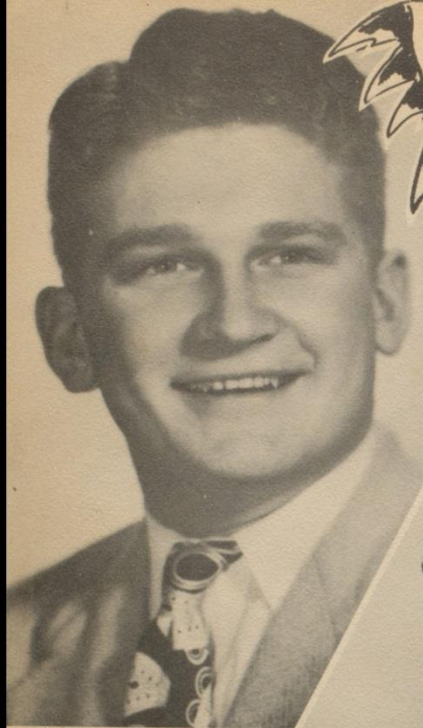


Sophomore
Favorites



Freshman
Favorites

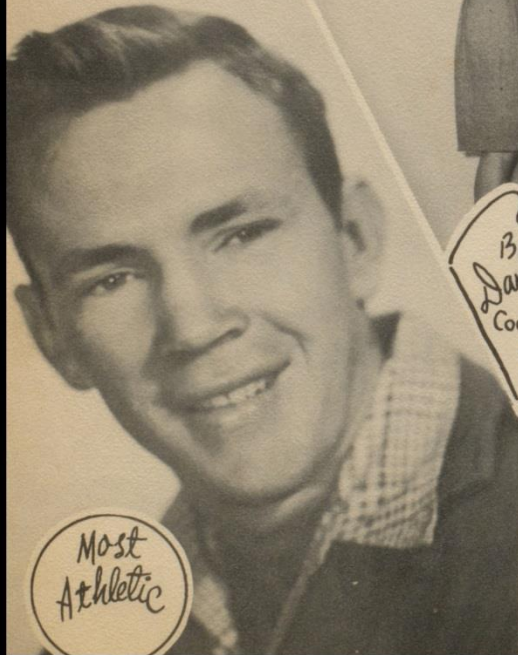




MOST Handsome
MOST Beautiful



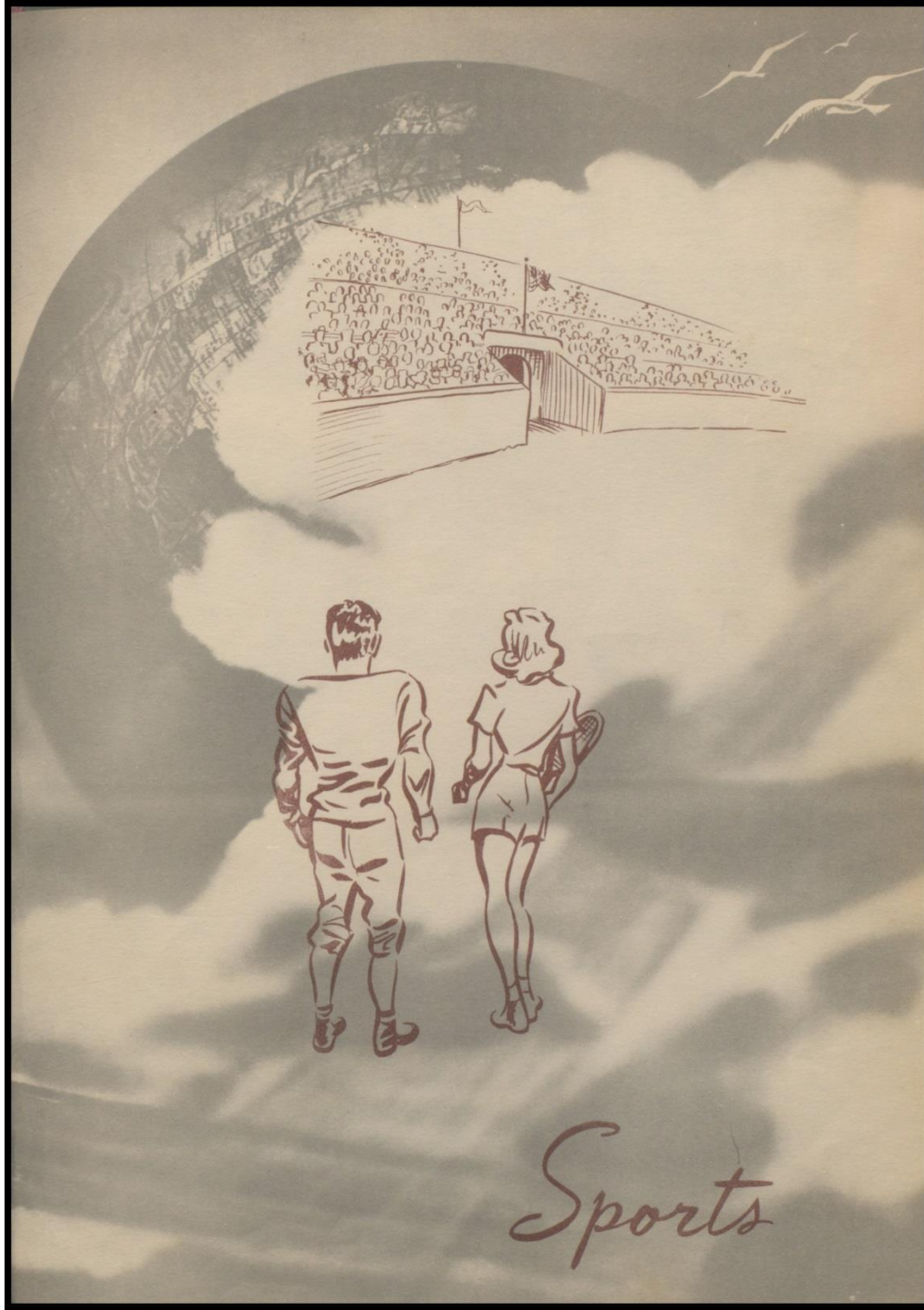
BEST Dancing Couple



Most Athletic

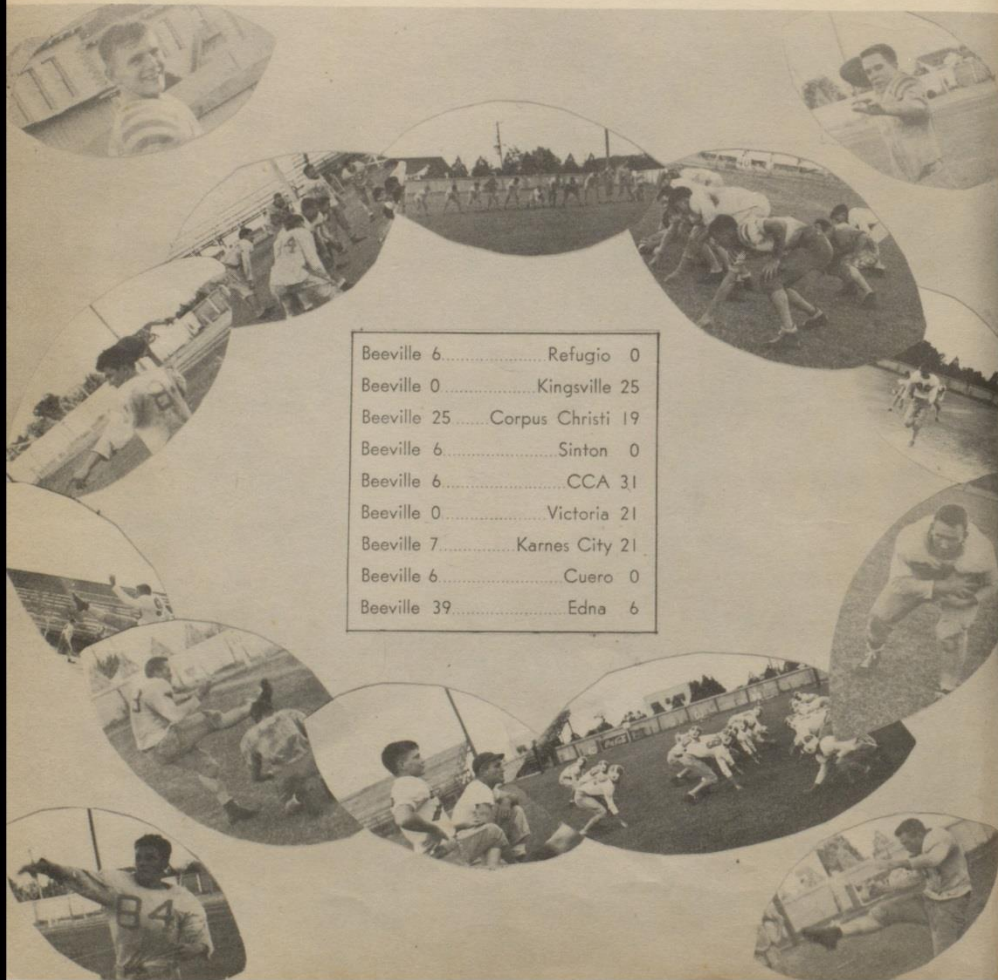


Most Athletic

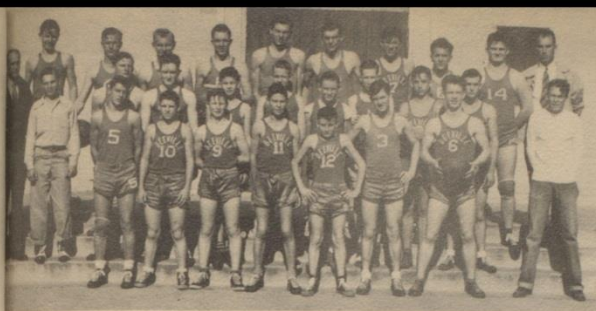


Sports

The Trojan Football Squad



Beeville 6	Refugio 0
Beeville 0	Kingsville 25
Beeville 25	Corpus Christi 19
Beeville 6	Sinton 0
Beeville 6	CCA 31
Beeville 0	Victoria 21
Beeville 7	Karnes City 21
Beeville 6	Cuero 0
Beeville 39	Edna 6



Basketball TEAM °

TOURNAMENTS

WON—Pettus
2nd Place—Ingleside

2nd Place—Beeville first
Invitational Tournament
Trojans and Stingrees in
for District Honors.



Beeville	Opponents	
31	San Diego	36
34	San Diego	30
45	Pettus	32
35	Victoria	50
46	Cuero	16
37	Karnes City	35
38	Kennedy	22
32	Yorktown	22
32	Karnes City	27
36	Pettus	32
30	Edna	10



30	Alice	23
29	Sinton	30
39	Navy (cc)	40
28	Victoria	24
51	Cuero	18
20	Pettus	33
34	Ingleside	24
34	San Diego	30
30	Victoria	33
49	Karnes City	25
63	Edna	18





GIRLS BASKETBALL TEAM



GIRLS VOLLEY BALL TEAM



Organizations



WILMA LOIS JASCHKE

BETTEY BOB MOORE

CLARISSA MARTIN

II
The Office
STAFF

MARGARET BARBER

BETTY HUTCHINS

JEAN JOINES



THE LIBRARY CLUB



Mrs. Ledbetter
SPONSOR

President Nellene Baker
Vice President Kenneth Parker
Secretary Charles Dunn
Treasurer Ritzy McCord
Sponsor Mrs. Ledbetter



◦ THE TROJAN STAFF



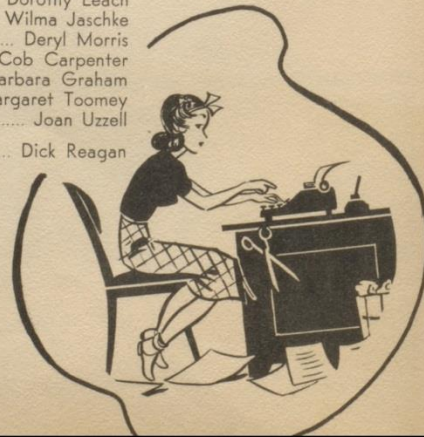
(LEFT TO RIGHT STANDING): Margaret Toomey, Joan Neumann, Betty Beasley, Ann Hicks, Loretta Ray, Dorothy Leach, Miss Dugat. (CENTER): Cob Carpenter, Freddie Frels, Deryl Morris, Bobby Cox, Dickie Reagan, Rodney Larson. (SEATED): Wilma Lois Jaschke, Jean Prestridge, Ramona Walls, Shirley Ann Atkinson, Betty Jo Hadwin and Joan Uzzell.

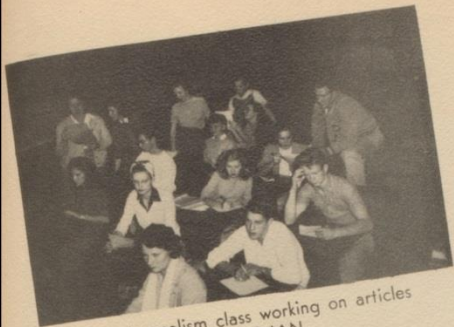
THE Staff ◦

Editor-in-Chief	Betty Beasley
Assoc.	Ann Hicks
Assoc.	Bobby Cox
News Editor	Loretta Ray
Assoc.	Rodney Larson
Gossip Editor	Jean Prestridge
Assoc.	Joan Neumann
Make-up Editor	Ramona Walls
Assoc.	Betty Hadwin
Art Editor	Shirley Atkinson
Assoc.	Freddie Frels
Society Editor	Dorothy Leach
Assoc.	Wilma Jaschke
Sports Editor	Deryl Morris
Assoc.	Cob Carpenter
Girls Sports	Barbara Graham
Assoc.	Margaret Toomey
Jokes	Joan Uzzell
Business Manager	Dick Reagan



Sponsor Miss Jean Dugat





The Journalism class working on articles to go into the TROJAN.

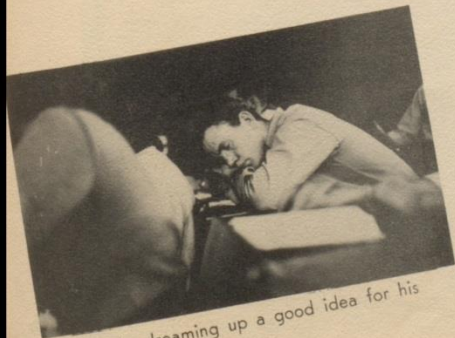


Shirley, Freddie, and Ann are preparing to do art work on the paper.

The Trojan Staff at Work



When Freddie finishes drawing this page, it will be typed and then mimeographed.



Cob, dreaming up a good idea for his article.



Some of the staff, mimeographing the pages of the paper.

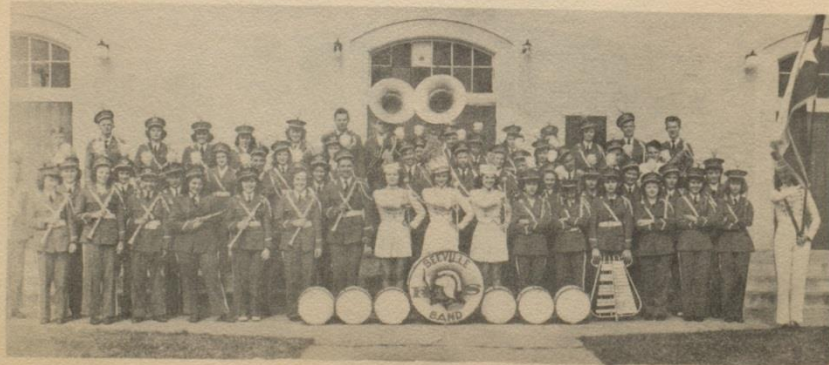
o THE BEEVILLE TROJAN BAND



AS A CONCERT BAND

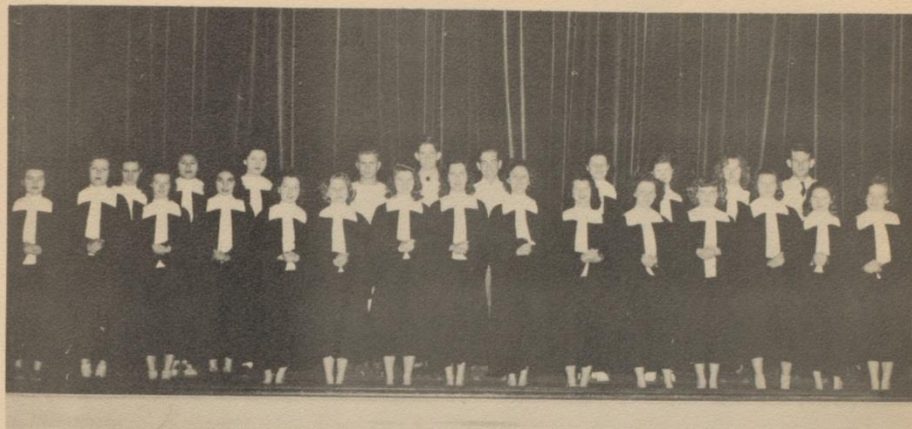


MARCHING IN THE RODEO PARADE



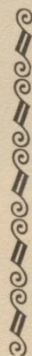
AS A MARCHING BAND

CHORAL CLUB



BYRON E. WALTERS
Director

Gloria Boyd
Marilee Calhoun
Consuelo Cisneros
Bobby Cox
Patricia Cox
Frances Davis
Bettye Gayle
Madeline Gordon
Bette Hadwin
Hazel Harris
Dolores Hatcher
Dorothy Hatcher



Mac Hudgins
Maria Martinez
Leah Miller
Lynna Moreland
Dick Mutchler
Orlean McCarley
Sylvia Rudeloff
Janie Smith
Margaret Toomey
Ramona Walls
Marjorie Wise
Janice Harding



The PEP SQUAD



Maggie Nell, looking astonished at the school spirit.



The Pep Squad, practicing in the gym with Miss Kaiser.



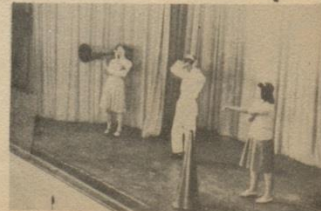
Sylvia, looking fierce, to encourage yelling.



Buddy and Sylvia look on as Maggie instructs the squad.



Dick, yelling with all his might.

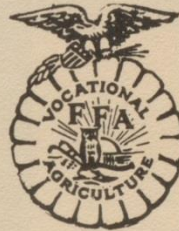


Dick and Maggie look on as Lynna calls the next yell.

FUTURE FARMERS OF AMERICA



President Harvey Nelson
 Vice President Buddy Brown
 2nd Vice President Tommy Sullivan
 Secretary Lois Bryan
 Treasurer Billy Owens
 Parliamentarian Robert Trafton



Reporter Alfred Krause
 District Reporter Blain Luthringer
 Farm Watch Dog F. D. Roberts
 Song Leader Edward Salmon
 Historian Robert Hardy
 Advisor Monroe Fairley



THE H.E. GIRLS



◦ THE SPANISH CLUB



Sponsor	Miss Mamie Goen
President	Ritzzy McCord
Vice President	Gloria Boyd
Secretary	Louise Welder
Treasurer	Dorothy Leach
Reporter	Consuelo Trevino



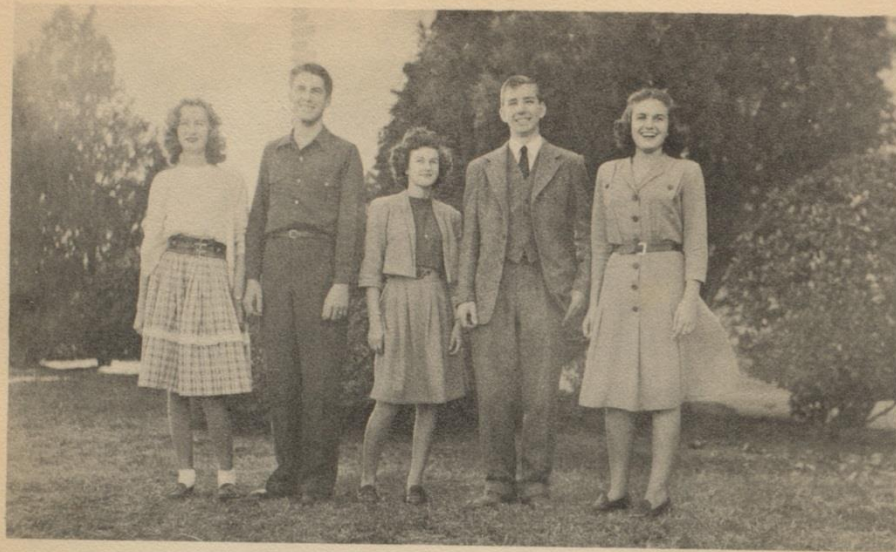
Miss Mamie Goen
Sponsor



Ritzzy McCord
President



◦ THE FOOTLIGHT CLUB



President Evelyn Reagan
Vice President Betty Bob Moore
Secretary Billy Jenkins
Treasurer Marjorie Wise
Sponsor Kathleen Brown





Activities



Majorette "Roba"



Rodeo Caravan



Majorette "Pat"



Practice Makes Perfect???



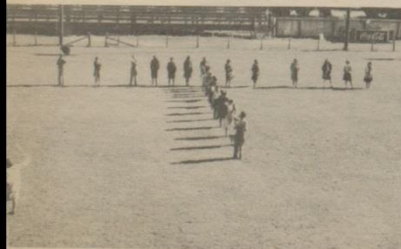
Second Band



Rodeo Parade



Waitin' for the bus to come in!



T for Trojans!



Beeville-Sinton Game







The Androol Sisters



Wonder Woman & Supermouse



Surprised? Aggie??



Watch her step!



Little Lotus Blossom and Tojo



Duz Goes Everything



Only One to a Customer



Am's the Word, Girls!



I'd Rather Be a Pick-up Than a Let-down



Stone Cold Dead in CCCC



Take My Advice Kid, and....



Huggin' and a Chalkin'



Sixth Period Drips!



Mr. Bauer and his secretary.



Miss Maxine McCarley, representative of Beeville at the Peanut Festival in Alice.



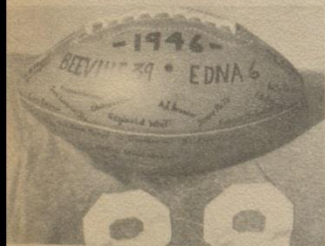
Mr. Walters and a cup for Rene from the band.



The teachers' party.



The teachers' party.



Signatures of the football boys and coaches.



Mr. Clifford Farmer, member of the school board.



The basketball boys.
DISTRICT CHAMPS
1946-1947



The school board.
An important meeting.

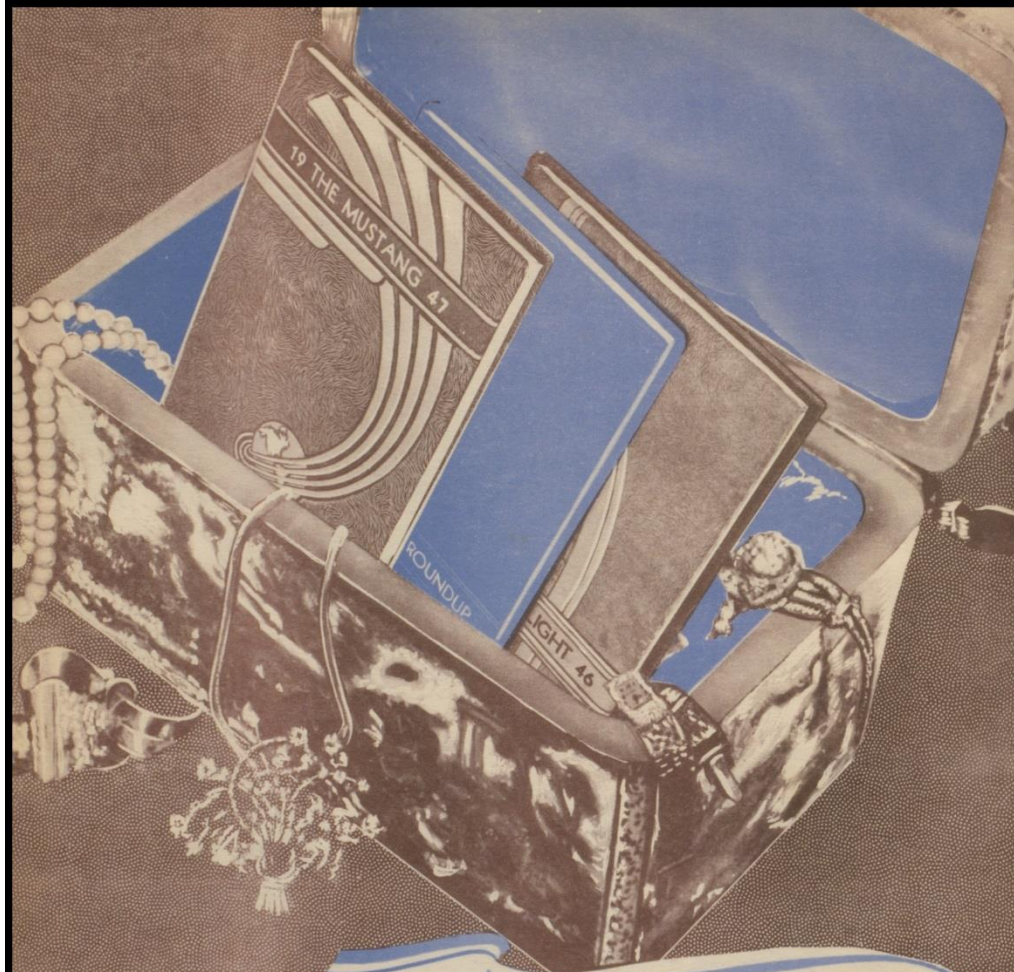


Mr. Cato's Secretary



The cafeteria staff.





Treasured Memories

Your yearbook is a store of treasured memories. The oft repeated thrill of recollection which accompanies each new search through its pages will many times repay you for the care and consideration which has gone into its creation.

We are proud of the part we have had in the production of this book. It indicates the wealth of ideas and ability which have made possible the long record of our school annual achievement.

TAYLOR PUBLISHING COMPANY
Dallas, Texas

7845033

