



1943

THE TROJAN

J
371.8
T845

The



TROJAN

OF

43

PROPERTY OF
A. C. JONES HIGH SCHOOL LIBRARY
BEEVILLE, TEXAS

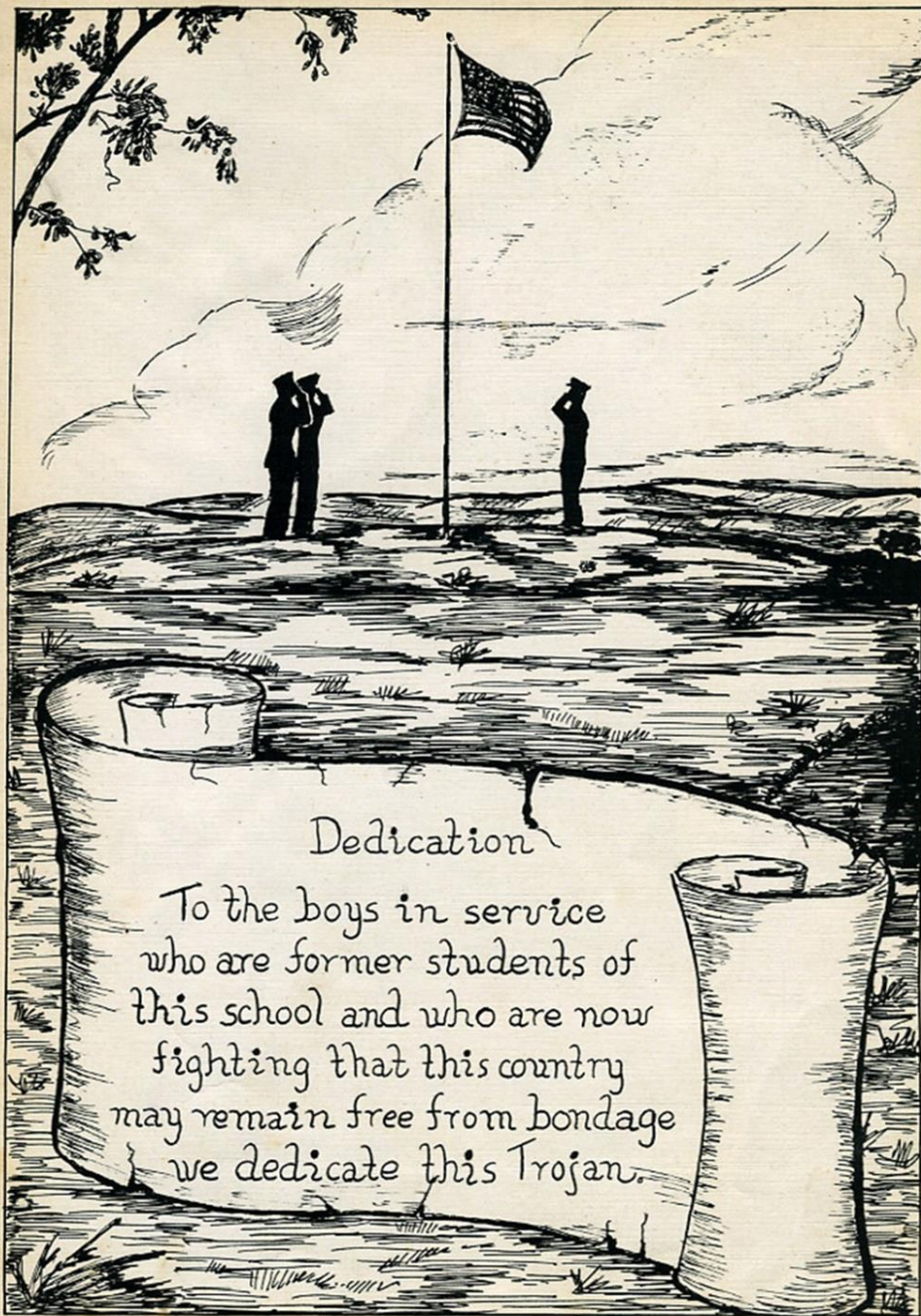


A.C. JONES HIGH SCHOOL

PROPERTY OF
A. C. JONES HIGH SCHOOL LIBRARY
BEEVILLE, TEXAS

Foreword

We, the Trojan staff of 1943
bring this annual to you with hopes
that when time has rippled by in
the river of life, you may turn
the clock back and reminisce past
friendship, good times and enjoyable school
days you once knew.

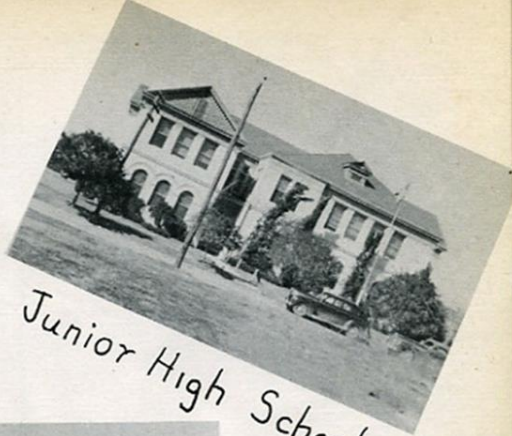


Dedication

To the boys in service
who are former students of
this school and who are now
fighting that this country
may remain free from bondage
we dedicate this Trojan.



Senior High School

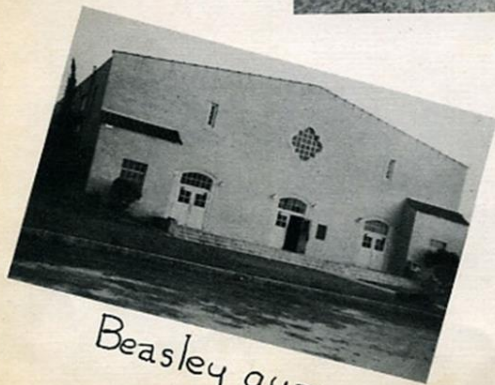


Junior High School

Home
Economics
Cottage



Elementary
School



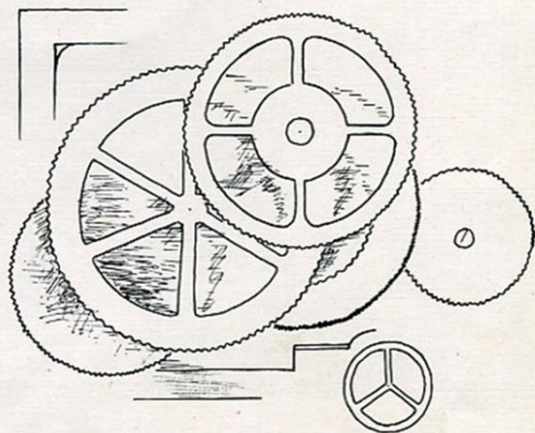
Beasley gym



Stadium

THE

CLOCK



WORKS

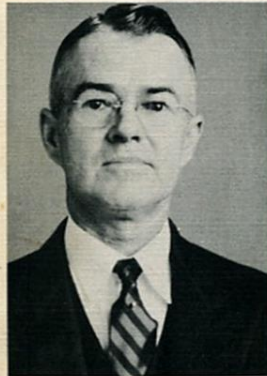
MEMBERS
of the
SCHOOL BOARD



R.A. Hall
President



Paul Bauer
Secretary



Dr. L.N. Connally



S.R. Davis



Jack Hathaway



T.A. Hunt



A.P. King



Capt. S.E. McNeill



Superintendent of
Schools

Robert J. Marshall

B.A.: University of Texas 1932
B.S.: Texas College of Arts and
Industries 1934
M.A.: University of Texas 1939

"The cooperation of the entire student body in building and maintaining a better school system is sincerely appreciated."

Robert Marshall

Principal of
A.C. Jones High School
Jack C. Cates

B.B.A.: Texas College of Arts and
Industries 1935
M.B.A.: University of Texas 1940

"Through the cooperation and efforts of students, faculty, and administration, we have achieved a high standard for our school."

Jack C. Cates





The FACULTY



Maxine Arnold
English; B.A. Sam Houston
State Teachers' College;
1936



Genelle Bell
Mathematics; B.A. University
of Texas; 1931; M.A. Univer-
sity of Texas; 1936



(Mrs.) Grace Schoppe Bauer
History; B.S. S.W.T.S.T.C.;
1932; M.A. S.W.T.S.T.C.; 1939



Monroe Fairly
Vocational Agriculture; B.S.
Sam Houston State Teachers'
College; 1932



(Mrs.) Mary Frances Brown
Reading; B.S. Sull Ross
State Teachers' College;
1933



Mildred Fitzgerald
Commercial; B.S. T.S.C.W.;
1942



Ernestine Kinkler
Library; B.S. T.S.C.W.; 1942



(Mrs.) Anne Wolfe Maley
Home Economics; B.S. T.S.C.W.;
1921; M.S. Colorado State Col-
lege; 1942



Kathryn Morris
Home Economics; T.S.C.W.; 1939



E. H. McCombs
Music; B.A. Southwestern Uni-
versity; 1934



(Mrs.) Elsie Davis Stewart
Spanish, English; B.A. Baylor
University; 1940



(Mrs.) Josephine Burns Tarver
English; B.A. S.W.T.S.T.C.;
1937



Roberta Wright
Science; B.S. University of
Texas; 1940



Walter L. Williams
Principal of Elementary School;
Physics; B.A. S.W.T.S.T.C.; 1935;
M.A. S.W.T.S.T.C.; 1939

JUNIOR HIGH FACULTY

C.C. McCALL, PRINCIPAL



B.D.A.: Texas College of Arts and Industries 1934
 B.S.: Texas College of Arts and Industries 1935

"A student body will always reflect itself in a community by the actions and activities of its members. May the students of our school always continue to maintain their present level, and strive to raise it as each year passes."

C.C. McCall



(Mrs.) Berna Wilson Adams
 Mathematics; B.A. University of Texas; 1933



Harriet Louise Burns
 Spanish; B.A. S.W.T.S.T.C. 1938



Corinne Herndon
 Physical Education; B.S. Mary Hardin-Baylor; 1939



(Mrs.) Lucille Jardine May
 Language Arts; B.S. Sam Houston State Teachers' College; 1936



Weldon Phillips
 Physical Education; B.S. S.W.T.S.T.C.; 1939



(Mrs.) Nell Prather Stewart
 History and Arithmetic; B.S. Texas College of Arts and Industries; 1937

The
SENIORS



OF

43

President
Johnny Barnhart
Vice-President
Jerry Chapman
Secretary-Treasurer
Martha Beasley



BEVERLY ALBRECHT "Bev"

H. E. Club, Glee Club '41, Press Club '42 '43



VIRGINIA LEA BROWN

Glee Club '40, Pep Squad '41, H. E. Club



MARY LOIS APPLEWHITE
Glee Club '41, Press Club '42 '43, Pep Squad '41, H. E. Club



JOYCE JEAN BRYANT

Glee Club '40 '41, Band '40 '41 '42 '43, Dist. Tennis, H. E. Club, Annual Staff, Press Club '43



LAWRENCE ARMATTA

Football '41 '42 '43, Basketball '42 '43, Band '40 '41 '42, H. E. Club, Track '42



JERRY CHAPMAN

Pres. Jr. Class '42, Vice-Pres. Sr. Class '43, Editor Annual Staff, Football '41 '42 '43, Basketball '41, Track '41 '42 '43



JOHNNY BARNHART "Nehi"

Business Mgr. Press Club '43, Pres. Sr. Class '43, Pres. Business Club '43, Football '43, Band '41 '42 '43, District Dramatics '40, Regional Declamation '42



LENA MARY CONNALLY

Glee Club '40 '41 '42, Press Club '43, Trio '42 '43, H. E. Club, A Capella Choir '42, Pep Squad '41



MARTHA BEASLEY "Beazel"

Ass. Editor Press Club '42, Editor Press Club '43, Glee Club '41, Pep Squad '41, Vice-Pres. Jr. Class, '42, Sec. Sr. Class '43, H. E. Club, District Essay Writing



IVA RUTH CUDE

Annual Staff, Glee Club '42, H. E. Club

DONNA DONLEY

Press Club '42 '43,
Glee Club '41, H. E.
Club, Dist. Dramatics
'40, Pep Squad '41



DENNIS GRIZZLE

Football '42 '43,
H. E. Club, Basketball
'42 '43, Business Club
'43, Track '41 '42,
Dist. Tennis '41 '42



JEAN FORGASON "Frog"

Press Club '42 '43,
Vice-Pres. H. E. Club
'41, Glee Club '40 '41,
Dist. Dramatics '40,
Yell Leader '41



DOROTHY HADWIN "Dot"

Glee Club '42, H. E.
Club



JO ELIZABETH PRELS "Jo"

Press Club '42 '43,
Glee Club '40 '41 '42
'43, Dist. Dramatics
'40, H. E. Club, Pep
Squad '41, A Capella
Choir '42



ANNA HATCH

Volley Ball '42, Pep
Squad '41, History Club
'41, Business Club '43,
H. E. Club, Annual
Staff, Press Club '43



MARTHA IRIS GILL "Gilly"

Pres. H. E. Club '43,
Press Club '43, Glee
Club '40, Yell Leader
'41 '42



PATSY HICKS

Glee Club '40 '41 '42,
A Capella Choir '42,
Trio '42 '43, Press
Club '42 '43, H. E.
Club, State Typing '41,
Annual Staff



ARNO GOLD

Press Club '43, Band
'40 '41 '42, Annual
Staff



KEITH HODGES

Football '43, Basket-
ball '42 '43, Tennis '42





LOUIS HOLUBEC "Lucifer"
Basketball '43



RUBY KRAEMER
H. E. Club



DORIS HOULIHAN
Glee Club '40 '43,
Band '40 '41 '42 '43,
H. E. Club



MINNIE KRAUSE
Press Club '42 '43,
H. E. Club, Band '40
'41 '42 '43, History
Club '41, Business Club
'43



NEWTON KLEMANN "Roswell"
Football '42 '43, Sec.
Jr. Class '42, Treas.
Sr. Class '43, Press
Club '42, Track '41,
Annual Staff



ALBERT LOUIS KUBALA
Press Club '42 '43,
Band '40 '42



JACQUELINE KEBODEAUX
"Jackie"
Glee Club '41 '42,
Press Club '42, Dist.
Typing '41, Band '43



MARY JOYCE KUBALA
Press Club '42 '43,
Trio '42 '43, A Capella
Choir '42, Glee Club
'40 '41 '42, H. E. Club



RICHARD KOWALIK
Basketball '43



EDYTHE CLAIRE LEAHY
Glee Club '40, H. E.
Club, Dist. Dramatics
'40

ANTONIA LEAL "Tony"

Baseball '41, H. E.
Club



PAY NELL NOLTE

H. E. Club



JESUSITA MALDONADO
"Susie"

H. E. Club



HORACE NUTT "Cuz"

Yell Leader '41, H. E.
Club, Football '40 '43,
Dist. Track '42, Track
'42 '43



ADELAIDA MEDINA

Business Club '43



ANNA BELL PACE

H. E. Club



VINCENT MILLER

Band '40 '41 '42,
H. E. Club



BETTY POHLER

Glee Club '40 '41,
Press Club '42 '43,
H. E. Club



HARVEY NOLEN "Hoppy"

Football '42 '43,
H. E. Club



BILLY RAY RANDOLPH

All-Dist. Football '42,
Football '42 '43, Track
'41 '42 '43, H. E. Club,
Basketball '42 '43,
Press Club '42 '43, Bu-
siness Club '43, Re-
gional Track '41 '42





MARJORIE REAGAN "Marj"

Dist. Dramatics '40,
Glee Club '40 '41 '42,
H. E. Club



WILLIE FAY SHOWS "Bill"

Press Club '42, H. E.
Club



VIOLA MAE RILEY "Vi"

Glee Club '40 '43,
H. E. Club



EDWARD SUGAREK "Shug"

Football '40, H. E.
Club, Track '42, F.F.A.



GERALDINE RYAN "Jerry"

Glee Club '41 '42,
H. E. Club, A Capella
Choir '42



ALFRED TAYLOR "Red"

Pres. F.F.A. '43



MARGARET SCHOTT

Glee Club '40 '41,
Band '40 '41 '42 '43,
H. E. Club



BILLY THOMPSON "Tuffy"

Business Club '43,
History Club '41



CLARA MARIE SCHROEDER

H. E. Club



MARGARET ANNE TUCKER
"Peg"

Band '40 '41 '42 '43,
Dist. Tennis '42, Press
Club '43, Annual Staff

CARVIS UZZELL "Duck"

Glee Club '40 '41 '42,
Pep Squad '41, H. E.
Club, Press Club '42,
Annual Staff



GERALDINE HADWIN

Post-Graduate
Secretary to Mr. McCall



MARGIE WARD "Marj"

Pep Squad '41, H. E.
Club, Glee Club '40



CATHERINE MATEJEK

Post-Graduate
Secretary to Mr. Cates



MARTHA WELDER "Welder"



ANNA MARY DORSEY

Tax Office Deputy



LEENE YORK

Glee Club '40, Pep
Squad '41, H. E. Club



HETTIE HATCHER

Secretary to Mr. McCombs



RENE YORK "Buckie"

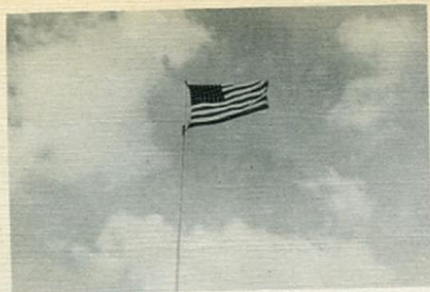
Glee Club '40, Pep
Squad '41, H. E. Club



ROSELLA LOVE

Secretary to Mr. Marshall





One flag-one country



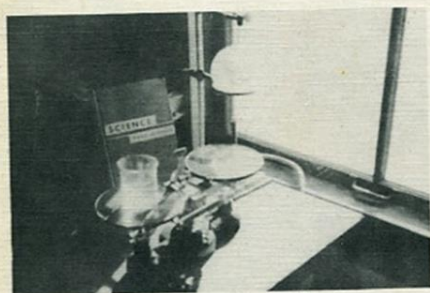
Struttin' high



Now, listen carefully —



Ride 'em, cowboy!



Science for victory



With this ring----



Ain't love grand?



Smilin' through

The

JUNIORS



CLASS

OF

President
Alex Cox

Vice-President
Herby Calkins

Secretary-Treasurer
Theda Maley

'44

PROPERTY OF
A. C. JONES HIGH SCHOOL LIBRARY
BEEVILLE, TEXAS



ANN ALEXANDER



ANITA BISSETT

H. E.



RAY BISSETT



GRACE BRADSHAW

Glee Club, '41, '42,
H. E., Tennis, '41, '42,
Library Club, '43,
Press Club, '43



PAULYNE BRYANT

Band, '41, '42, '43,
H. E., Press Club, '42,
'43, Glee Club, '41,
'42



NORWOOD BURRIS

F. F. A., Football
(B Team), '42, Basket-
ball (B Team), '42,
'43



HERBERT CALKINS ("Herby")

Vice-President of Jr.
Class, Football, '42, '43,
Press Club, '43



MAURINE CHRISTAKOS

Band, '41, '42, '43,
Press Club, '43, Glee
Club, '42, District
Declamation, '42, H. E.



ROBERT L. CONNALLY

Band, '41, '42, '43,
F. F. A.



CAMILLA COSEY

Band, '41, '42, '43,
Glee Club, '41, '42,
Press Club, '43, H. E.



ALEX F. COX, JR.

President of Jr. Class,
Band, '41, '42, '43,
Press Club, '43, Tennis,
'42, Annual Staff, '43,
Football (B Team), '42,
'43



MARCELLE DIAMOND

H. E., Pep Squad, '41,
'42

MARGARET M. DOLAN

H. E.



OFILIA GARCIA

H. E.



NONIE DIEGEL

H. E., Glee Club, '42



MANUEL GONSALEZ

Football (B Team),
Basketball, '41



LANE DUNN

F. F. A., H. E.



WILLA DEAN GRAY

Band, '43, Press
Club, '43



DOROTHY FITCH

H. E.



AMOS HATCHER

Band, '41, '42, '43



LEE JACKSON FREEMAN



MELVIN HERTEL

F. F. A.



ROY FRIDGE

Band, '41, '42, '43



JOCENE HILL

Press Club, '43, H. E.,
Annual Staff, '43





BARBARA HUNT

Glee Club, '41, '42,
H. E., Pep Squad, Library
Club, '41, '42, '43



BILL McCRACKEN

Basketball, '43,
F. F. A.



LAWRENCE IMES

H. E.



OMFALIA MALDONADO

H. E.



LEONARD KIRKPATRICK

Band, '40, '41, '42, '43,
Football, '42, Basketball,
'43



THEDA LOUISE MALEY

Sec.-Treas. of Jr.
class, Press Club, '43,
Annual Staff, '43, H. E.,
Band, '40, '41, '42, '43,
Glee Club, '42, State
Typing, '42



HOWARD LANCASTER, JR.

Band, '42, '43, Press
Club, '43



ORIS MARTIN

Band, '41, '42, '43,
Press Club, '43, Annual
Staff, '43



LOUISE LEE



RUBY GENE MARTIN

H. E.



MARION LEWIS ("Mac")

Band, '43, Football, '43
'43



JOYCE MIKESKA

Band, '41, '42, '43,
H. E.

KATHLEEN MILLER

Band, '40, '41, '42,
'43, H. E., Press Club,
'43, Glee Club, '41,
Regional Typing, '42



YVONNE PARIS



RAUL O. MORENO

Football (B Team), '41,
Basketball, '43



BERNARR PLUMMER

F. F. A., H. E.



LOMA DELL MUCKLERoy

Band, '41, '42, '43,
H. E.



BETTY JO RANDOLPH

Library Club, '41



GRACE NAYLOR

Library Club, '41,
Glee Club, '41



MARVIN ROBERSON

Football, '42, '43



ELSIE LEE NEW



ELBERT SLADEK

Football, '41, '42, '43,
Basketball, '43, H. E.



MIKE OLSEN

F. F. A., H. E.



MARILYN STRAUSS

Band, '41, '42, '43,
Glee Club, '41, H. E.,
Press Club, '43





DODSON SULLIVAN
F. F. A., Football, '42,
H. E.



DICK SULLIVAN
F. F. A.



THOMAS LEE THOMPSON
Band, '43



DORIS TREPTOW
Band, '41, '42, '43,
H. E.



EDWARD MEAD UPTON
F. F. A., H. E.



ROBERT VAN SICKLE



WYLMA MARGARET WALKER
Glee Club, '41, H. E.,
Press Club, '42, '43,
Pep Squad



WYLMA LEA WILLIAMS
H. E., Glee Club, '42



CHARLIE WILSON



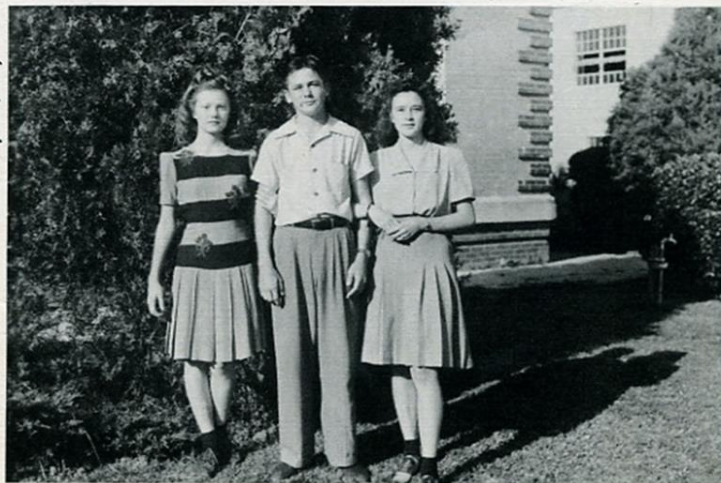
ROSELEE WRIGHT
H. E., Band, '42,
'43, Glee Club, '42



NADINE EVELYN WRINKLE
H. E.

The

SOPHOMORES



Home Room Officers

CLASS OF

Mildred Cox

Thad Irby

Barbara Mabry

'45



Vern Lee Amthor



Duane Baker

Kathryn Ann Biel



Joe Kelly Bissett



Alfred Boemer



C. A. Britt



Dorothy Brown



Allan Lee Butler



Pauline Carr



J. L. Carver



Elias Chapa



Louavis Christakos



Mildred Cox



Irma De Los Santos



Roger Deschner



Lila Dubose



Charles Engle



James Evans

Gilbert Garcia
Adam Gonzales
Eugene Graham



Kenneth Green
Francis Grizzle
Aleene Handy



Sidney Harding
Charles Hathaway
Alice Hawkins



Shirley Henry
Howard Hercek
Gay Nell Hogue



Elizabeth Holubec
Lucille Holubec
Thad Irby



Georgia Isaacs
Jacobita Jaramillo
Joe Lazarine





Barbara Mabry
 J. C. Martin
 Van Massengale



Larry Matlock
 Barbara Meinrath
 Lee Mills



Billy McCord
 Margaret Nolen
 Noreen O'Neal



Adam Perez
 Gloria Perez
 Joe Petrie
 James Potter

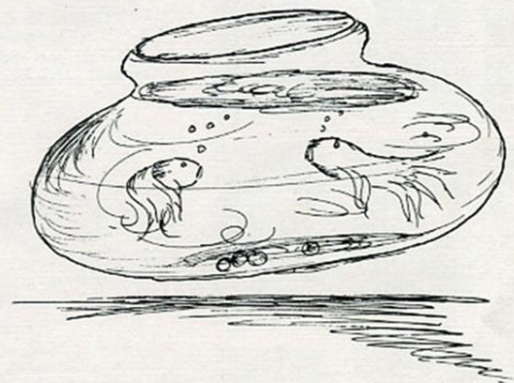


Frank Reynolds
 Melvin Roberts
 Roy Roberts
 Dorothy Helen Smith



Jean Teague
 Freddie Uzzell
 LaZerne Weaver
 Philip Vance

The
FRESHMEN



CLASS OF

'46



Petrita Alaniz
Amelina Baltazar
Lee Allbright
David Baltazar



Helen Bast
Grace Borchers
Lucille Booth
Nettie Booth



Vinita Faye Brown
Fred Capen
Keith Carpenter
Dora Cisneros



Herlinda Cisneros
Lionel Cisneros
Henry Contreras
Lenora Cook



Lucille Cude
William Curry
Mary Lou Custer
Margie Dawson



Adelaida Delgado
Robert DeRusse
Sylvia Ezell
T. L. Ferguson



Alice Flores
Aurora Flores
Mary Catherine Fox
Martha Freeman

Alice Garcia
Adela Garcia
Flavio Garcia
Salome Garza



Joe Gruy
Lionel Hadwin
Ellsworth Handy
Ralph Harding



Winnie Irene Harris
Aldis Henry
Josephine Holubec
Dolly Ann Huff



Kenneth Imes
Wayne Isaacks
Stewart Jameson
Betty Kebodeaux



Edward Kimball
Maurine Lackey
Ernestine Laurel
Louis Lazarine



Richard Lazarine
Baldemar Longoria
Mary Will McCullom
Frances McWhorter



Estella Madrigal
Gilbert Moreno
Ramon Olivarez
Willie Faye Price





Loretta Jean Pustka
Roberta Dean Pustka
Lola Mae Rothlisberger
Vivian Rothlisberger



June Smith
W. T. Sparks
Sydney Stanley
John Stewart



Ruth Stewart
Patricia Strauss
Claude Sugarek
David Sullivan



Phillip Sullivan
Doris Marie Taylor
Joseph Toomey
Willowby Treadway



Roger Trevino
Roy Van Sickle
Marian Voss
Danny Weaver



Amos Welder
Barbara Wilson
Eugene Witt
Leslie Wren



Charles Hunt
Mona Mae Yeoman
Gwendolyn Young
Shirley Hunt



8-1 Homeroom - Mrs. Nell Prather Stewart
 Front Row (Reading from left to right) -- Shirley Ann Atkinson, Edward Clingman, Freddie Frels, Bobby Cox, Dick Reagan, Harvey Helson, Thomas Kingrea, Bettye Bob Moore, Patsy Clark, Margaret Toomey, Gene Evans, Lonnel Knobles.
 Second Row -- Marhorie Wise, Dorothy Merle Hatcher, Bettye Beasley, Ann Hicks, Hazel Harris, Robatine Calkins, Lois Riggs, Jean Ann Prestridge, Jerome Boenig, Pat Bethany, Billy Jenkins, Newton Burgin.
 Third Row -- Joan Neumann, Aline Ford, Melvin Nicholson, Joyce Taylor, Maxine McCarley, Bettye Gayle, Kirby Amthor, Al Adair, Joseph D'Orsogna, Choppy Reed, Dan Gaskins.
 Back Row -- Evelyn Reagan, Kathleen Brown, Mrs. Stewart.

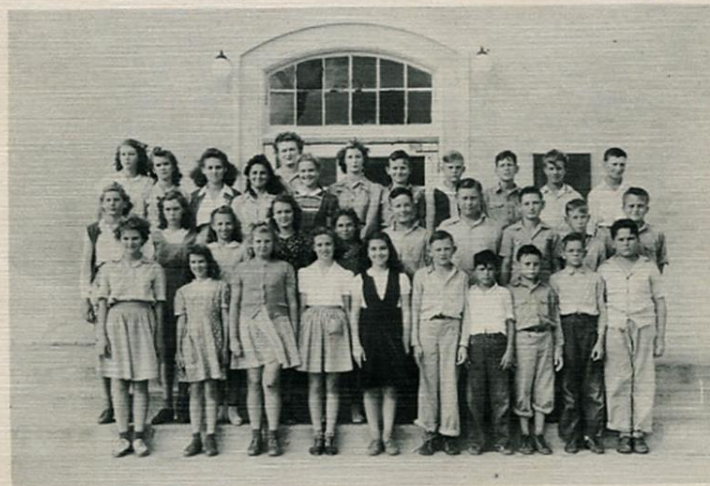


8-2 Homeroom - Miss Corinne Herndon
 Front Row (Reading from left to right) -- Helen Harrison, Martha Green, Daisy Mae Martin, Billie Louise Johnston, Lucille Carr, Madeline Gordon, Mary Joyce Swinney, Betty Jo Hadwin, Margaret Barber.
 Second Row -- Martha Parker, Barbara Graham, Hazel Bast, Clarissa Martin, Pearl Ferguson, Christine Wrinkle, J. D. McGill, Donald Martin.
 Third Row -- Florence Summers, Helen Penny, Beulah Curtis, Margie Dial, Jesse Swinney
 Back Row -- Miss Herndon, Audrey Mae Prewitt, R. C. Moore, Jack Bozman, Sidney Vaughn, Lewis Lee, Darrell Bynum, Adrian Moore.



7-1 Homeroom - Mrs. Thurston May

Front Row (Reading left to right) -- Robert Lee Trafton, Ritzy McCord, Martha Gene Stanley, Una Sue Mills, Robert Lee Thetford, Sam Piepers, Claude Woolsey, Fayette Boyette, Jackie Hirst, Walter Kahler, Betty Alice Davis.
 Second Row -- Mary Welder, Patsy Lou Mize, Marilee Calhoun, Darline Ford, Jean Joines, Leland Diamond, Billy Garrett, Vera Mae Boenig, Joyce Marie Peacock.
 Third Row -- Dolores Hatcher, Carrie Frances McKinney, Patsy Carpenter, Sylvia Rudeloff, Frances Paris, La Nita Hirst, Paden Dawson.
 Back Row -- Mrs. May, Frances Davis, Joe Scott Lancaster, P. D. Roberts, Ellis Gene Smith, Walter Schroeder, Jerry Garrett, Paul Schulz, Reginald West.



7-2 Homeroom - Miss Harriet Burns

Front Row (Reading left to right) -- Ellene Hertel, Gladys Weaver, Betty Joyce Gamblin, Sarah Alexander, Betty Ann Gamble, Milfred McMurrey, Joe Calvin Booth, Alva Lee Bryan, Haden Edward Hatcher, Jackie Lee Pruett.
 Second Row -- Doris Weathersbee, Kathleen Wright, Audrey Prewitt, Betty Gene Isaacks, Pearl Denning, Kenneth Freasier, Charles Mock, Roy Lee Frecze, Donnie Morris, Morris Mullen.
 Third Row -- Margie Kurtz, Edna Allbright, Maudie Fox, Ned Treadaway, Naomi Ellis Barbara Ann Roberts, Kenneth Parker, Howard Pond, Archie Gaskins, James Butt, Albert Lauer.

ORGANIZATIONS





Trojan Band



The Trio
The Glee Club



Future Farmers of America



Future Homemakers of Texas

JUNK
THE
JAPS

THE TROJAN 5¢

AXE
THE
AXIS

VOL. 6 NO. 1

BEEVILLE, TEXAS

OCTOBER 9, 1942

JOIN THE SCRAP METAL DRIVE

FASHION EDITOR

JUNIOR HIGH

PERSONALITY



NEWS
FLASH

BHS

BELIEVE IT OR ELSE
BY BUTCH

PUBLISHED
TWICE MONTHLY

SPORTS

THE STAFF

Editor
Assistant Editor
Art Editor
News Editor
Sports Editor
Society Editor
Exchange Editor
Make-Up Editor
Feature Editor
Business Manager

Martha Beasley
Kathleen Miller
Minnie Krause
Jo Frels
Billy Ray Randolph
Mary Joyce Kubala
Maurine Christokos
Jean Forgason
Beverly Albrecht
Johnny Barnhart

REPORTERS AND ASSISTANT EDITORS

Oris Martin
Camilla Cosby
Alex Cox
Jogene Hill
Marilyn Strauss
Barbara Mabry
Howard Lancaster
Theda Maley

Georgia Isaacs
Willa Dean Gray
Betty Pohler
Lena Mary Connally
Mildred Cox
Dorothy Helen Smith
Wylma Walker
Arno Gold

TYPISTS

Donna Donley
Patsy Hicks
Margaret Anne Tucker

Mary Lois Applewhite
Grace Bradshaw
Pauline Eryant

MIMEOGRAPH
Jean Teague

Martha Iris Gill

SPONSOR: Miss Arnold

LOCALS

DR. RED CROSS

OF RATS & WOMEN
BY Evely Newhall

P.T.A.



T
H
E

A
N
N
U
A
L

S
T
A
F
F

Editor-----	Jerry Chapman	Jr. High Rep.-Gwen Young
Assistant Editor-----	Joyce Jean Bryant	Martha Freeman
Art Editor-----	Oris Martin	General Assistants:
Business Manager-----	Alex Cox	Thad Irby
Photographers-----	Arno Gold	Anna Hatch
	Margaret Ann Tucker	Iva Ruth Cude
Typists and Writers-----	Patsy Hicks	Carvis Uzzell
	Theda Maley	Roger Deschner
Letterer-----	Jogene Hill	Mildred Cox
Feature Editor-----	Newton Klemann	Minnie Krause
Sponsors:	Mrs. Anne Maley, Miss Ernestine Kinkler	



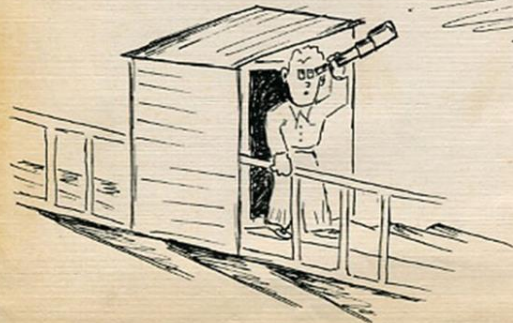


1. "Get in line."
2. Between halves
3. Home Front Assembly
4. Bull Session
5. Marbles?
6. Assembly
7. "Ain't love grand?"
8. Talkin' it over
9. Book or Betty, boys?
10. Plotting
11. Noon hour
12. Hawaii?
13. Sugar reports
14. Grand march
15. Get together
16. Just married
17. Posing
18. Just lazy





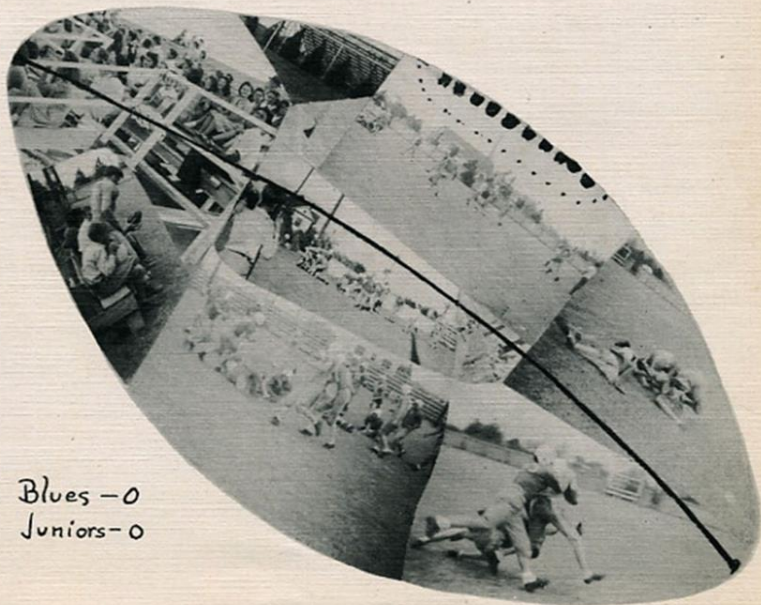
ACTIVITIES



INTRAMURAL
FOOTBALL



Top Row: Adam Gonzalez, guard; Alex Cox, center; Lee Mills, end; Jerry Chapman, guard; Keith Carpenter, tackle; Norwood Burris, center; Keith Hodges, end; Coach Weldon Phillips. Middle Row: Marvin Roberts, guard; Richard Lazarine, guard; Baldemar Longoria, tackle; Billy Ray Randolph, back; Elbert Sladek, back; Herbert Calkins, back; Thad Irby, tackle; Vern Lee Amthor, end; Newton Klemann, tackle. First Row: Mack Lewis, tackle; Elias Chapa, end; Joe Lazarine, guard; Horace Nutt, back; Dennis Grizzle, back; Johnny Barnhart, guard; Van Massengale, guard; Lawrence Armatta, end.

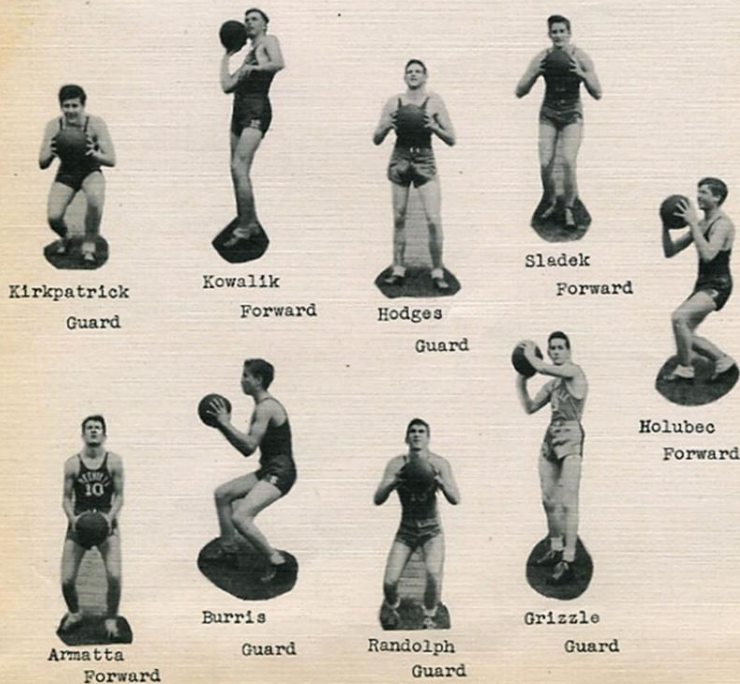


Oranges - 13 Blues - 0
Seniors - 6 Juniors - 0



BASKET
BALL

Coach Phillips, Billy Ray Randolph, Ray Bissett, Dennis Grizzle, Lawrence Armatta, Richard Kowalik, Lee Mills, Norwood Burris, Keith Hodges, Leonard Kirkpatrick, Louis Holubec.



Basketball Score

Opponents	Trojans
All Stars- 28	32
All Stars--32	33
All Stars--34	54
Pettus-----14	60
Refugio----26	29
Refugio----19	20
Kenedy-----12	24
Karnes City-7	18
Kenedy-----20	42
Refugio----18	9
Refugio----22	12

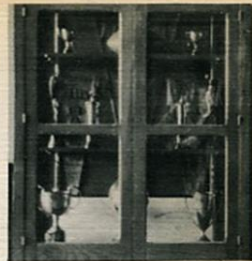




Experiment 50



Ye Olde Library



Awards



Hm-m-m-m



What's knittin', kitten?



At it again!



Scrap For Defense



"Donot tarry in the hall"



High Noon

GAME HAWKING WALK





CALENDAR

September

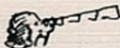


7. School starts with all the buildings damaged due to a tropical storm.
18. All school dance.
24. Band plays in assembly.



October

1. Mr. McCall's office moves to first floor of building.
2. Mr. Marshall speaks at Senior High assembly.
15. Senior High meets in study hall with Mr. McCall to make plans for observation post.
16. Mr. Marshall speaks to Junior High students.
19. Junior High assembly--a one-act play, "While the Toast Burned", directed by Mrs. Adams.
22. Faculty relaxes at party on cottage lawn.
29. Meeting of observers.
30. Senior High assembly on incendiaries, directed by Miss Wright. Football game--Seniors vs. Juniors and Sophomores.



November

5. Meeting of observers.
11. Holiday..
13. Junior class sponsors all-school dance.
17. Pictures are made for the annual.
19. All boy party at Junior School. Popcorn, peanuts, and picture show. Big time had by all.
20. Assembly program centered on Atlantic Charter, directed by Mrs. Bauer.
23. Defense class, under the direction of Mr. Cude, erects flag pole on Junior High campus.
24. Assembly program, "Our School at War", presented by Mrs. Stewart and the boys and girls of section 8(1).



December

3. Meeting of observers.
4. Song practice for Christmas program starts.
- 4-11. Practicing one hour every morning for Christmas program.
11. Senior High assembly program, musical about home front and fighting front, directed by Miss Arnold and Mrs. Tarver.
17. Christmas pageant. Very good. Everyone in school participates.
18. All school party sponsored by annual staff.
- 18-28. Christmas vacation.



January

1

1. New Year's Day holiday. Croquet set, Chinese checkers, and other games added to Jr. School game library.
8. Senior class meeting. Tumbling program given by girls of the Junior School P. E. classes, directed by Miss Corinne Herndon, the instructor.
15. Basketball game.
16. Annual Staff sponsors all-school dance. Favorites are crowned.
20. Basketball game with Refugio.
22. Basketball game with Refugio. Assembly program with the Junior High P. E. boys tumbling and boxing, under the direction of Coach Phillips.
23. Tournament at Kenedy.
26. Annual Staff meeting in home room period.
28. Basketball game with Kenedy. Meeting of Red Cross girls in home room period.
29. Junior class sponsors paid assembly program, the amateur hour. With a ripping, good melodrama, Sissy Cox, Freddie Uzzie, Joe Gruy, Frank Reynolds, Joe Kelly Bissett won the cake.
20. President's Ball at gym.



February



5. Library Club starts at Junior School.
8. Basketball game. Meeting of observers.
9. Basketball game at Refugio.
11. Meeting of observers.
12. Band concert in gym.
19. H. E. Dept. stages "Land of the Free" in assembly.
26. Junior class play, "Wild Ginger", starring Kathleen Miller and Roy Fridge.

SCORE	
17	9

March



2. Captain Schenck gives an illustrated lecture on his safari in the Malayan peninsula.
4. Press Club barbecue.
5. Junior School assembly. "America, the Melting Pot of the World" under the direction of Miss Harriet Burns.
11. Debate Club meets during home room period.
12. Rotary Club brings us the Cotton Bowl game via movies.
22. Seniors select graduation announcements.
25. Debate Club meets.
26. Sadie Hawkins Day--Gwen Young and Scott McNeill carry away prize at the dance that night.
27. Junior School assembly, "Farm Skills", directed by Mr. Fairly.



April



1. Annual Staff picnic and dance. No April Fools Day in the Junior School when a large order of new library books arrive.
14. Spanish assembly program, under the direction of Miss Goen.
23. Out of school Good Friday afternoon.
24. Regional track meet.
30. Senior class play, "Don't be Bashful", starring Jean Forgason and Jerry Chapman.

May

1. Ninth graders enjoy class day. The brightest spot in the Jr. High career.
7. Junior-Senior banquet and prom.
14. Seniors get out. Freshmen take their final examination in the Junior School.
16. Baccalaureate services. More exams for the Freshmen.
17. Junior School graduation with the class presenting "Elmer and the Love Bug" as their class play, starring Amos Welder, Margy Dawson, Lenora Cook, and Gwen Young.
20. Senior High commencement.
21. School gets out--report cards.



*all
school*



Jerry Chapman



Patsy Hicks

PROPERTY OF
A. C. JONES HIGH SCHOOL LIBRARY
BEEVILLE, TEXAS

FAVORITES



Lena M. [unclear]

W
E
B
B
E
R



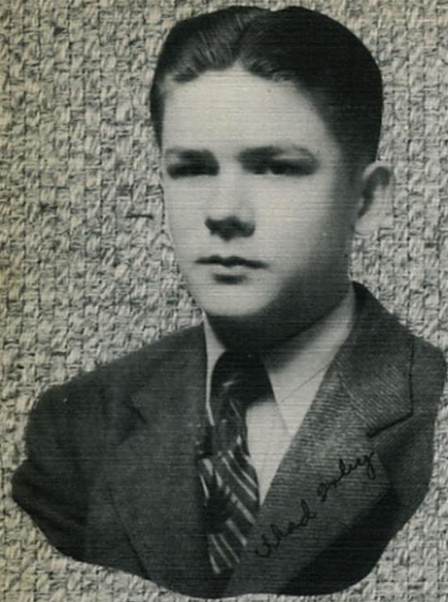
Newton [unclear]



W
E
B
B
E
R



Kathleen Miller



Walter Taylor



Sissy Cox



Heaven Young



Orman

FRANKLIN

FRANKLIN



1. Shocked, Billy?
2. News day
3. Quiet—studying!
4. Snake eyes
5. Camera shy?
6. Annual troubles
7. Man shortage, no?
8. Wild Ginger
9. Explanations
10. Target
11. Goin' up?
12. Pals
13. Let us pray
14. Loafing
15. Is it good, Billy?
16. Math genius
17. Tommy
18. Sweet letter
19. Muffled







P.S.



Ocharnee Johnson



Martin & Loretta Ray



Madge Carroll



Carlos Copeland



Florence Thomas



Mamie Goen
Spanish



Kathleen Burger



Mrs. Velma Geiselbrecht
Mathematics



Joe Shedelbower



William Lane



FINIS