

Beeville and Bee County.



BEEVILLE.

BEEVILLE, the county seat of Bee county, is an attractive little city with a population of three thousand. It is situated near the center of the county on the Paesta creek and is one of the most healthful towns in the State. It is on the line of the San Antonio and Aransas Pass Railroad running from San Antonio to Corpus Christi, and is 90 miles south of the former place and 60 miles north of the latter. It is also the western terminus of the Victoria division of the Southern Pacific railroad, being 56 miles west of Victoria. It is thus easily accessible by rail from almost all directions. It is the commercial center of a very large section of country and transacts a

C. P. EIDSON,

..Dealer in..

Staple and - - -
Fancy Groceries,

CORN, HAY,
OATS, BRAN,
CHOPS, MEAL,

BEEVILLE, - TEXAS.



GOODS DELIVERED FREE
TO ANY PART OF THE CITY.

— THE — RACKET STORE,

SLEDGE HAMMER
PRICES ON - -

...EVERYTHING...

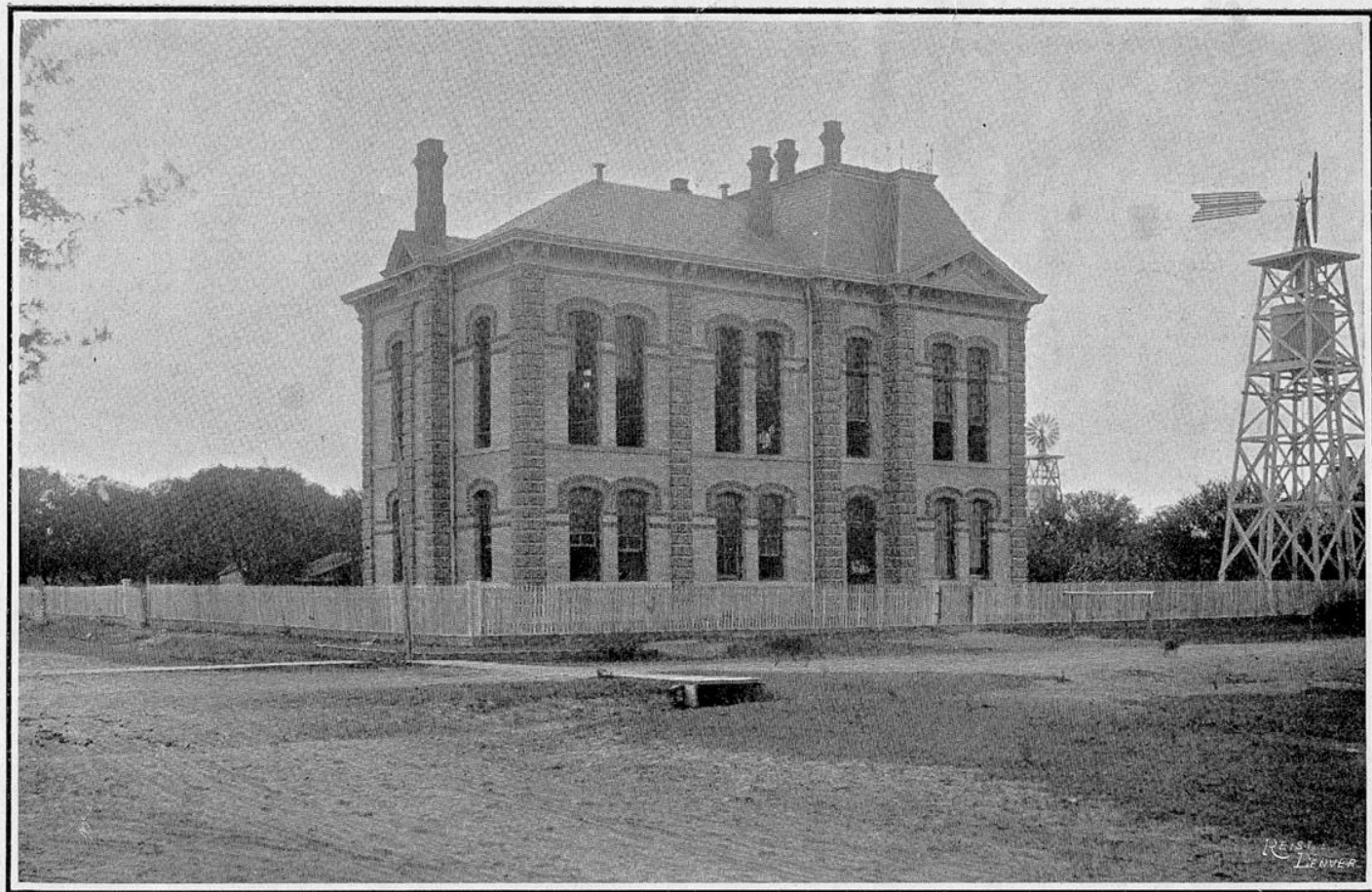


A FULL LINE OF

Glass and Queensware, Gents
Furnishing Goods,
Notions, Fancy Goods, Etc.



W. R. STOUT, PROPRIETOR.



BEE COUNTY JAIL

volume of business second to that of no town its size in the State. It is a great live stock shipping point, the counties west of it being devoted very largely to grazing. It is also rapidly becoming quite a cotton market, the soil and climate in this part of the State being especially adapted to the raising of the fleecy staple.

Beeville has many modern rock and brick business houses and fine residences. The following religious denominations are represented here, and each has a good, substantial edifice in which to hold services: Baptist, Methodist, Roman Catholic, Presbyterian, Christian and Episcopalian. Besides these for whites, the negroes of the Methodist and Baptist denominations have houses of worship. The Roman Catholics also have a nice, well-built school building of their own here. The general moral tone of Beeville will rank with that of any city its size in the United States, and no town anywhere can boast of less lawlessness. The people here are peaceable and law-abiding and there is a notable absence of the rowdyism and hoodlumism so common in many towns. The general quiet demeanor and good behavior of the inhabitants of Beeville is a subject of frequent comment

W. H. Ferguson & Co.,

UP-TO-DATE



..GROCERS..



KEEP MOST EVERYTHING GOOD TO EAT.

CORN, OATS AND HAY ON THE SIDE.

BEEVILLE, TEXAS.

MAX BRAUER,

DEALER IN

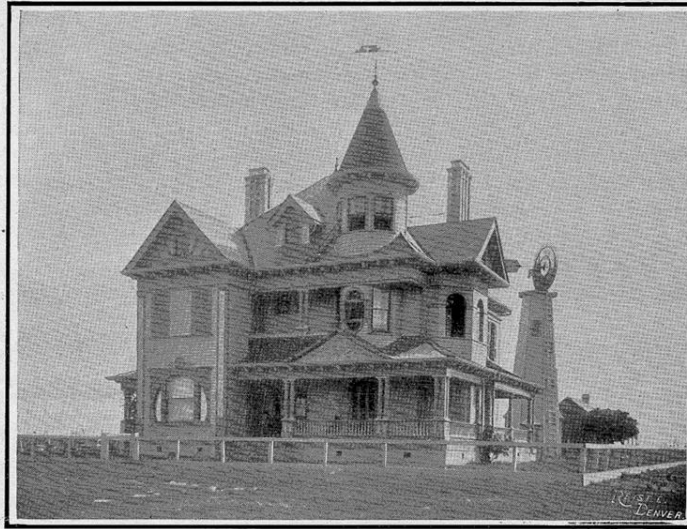
GENERAL MERCHANDISE

Dry Goods, Shoes and Groceries.

HONEY A SPECIALTY.



BEEVILLE, TEXAS.



RESIDENCE OF J. W. COOK, ESQ

G. W. BLACK

DEALER IN

STAPLE AND FANCY

Groceries



CORN
OATS
BRAN
A N D
H A Y

BEEVILLE, TEXAS

J. J. Meinrath & Co.

BAKERS
CONFECTIONERS

AND DEALERS IN

STAPLE AND FANCY
GROCERIES
CIGARS
AND
TOBACCOS



BEEVILLE, TEXAS

No where on the habitable globe does the soil yield better returns to the man who tickles it with the plow and with the hoe than it does in Bee county. As a stock farming country Bee ranks at the head of the list. In truck growing it is excelled by no other portion of the United States. Cabbage, Cauliflower, Watermelons, Canteloupes, Onions, Beans, Potatoes and all other vegetables grow here very easily; and, owing to the early seasons for which this section is noted, can be placed on the market from one to six weeks earlier than from any other section, and thus command very handsome prices. Truck farmers in Bee county have been making big money for several years, and the industry is rapidly growing. Bee county land planted in truck and well tilled yields from \$40 to \$500 an acre, according to the kind of truck grown. Three and four different crops are frequently raised and marketed from the same piece of ground during one year. The soil is practically inexhaustible, producing as well after 25 years of continuous cultivation without fertilizing as it does the first few years. Until within the last decade regarded as strictly a grazing country, Bee now gives promise of soon becoming one of the leading agricultural counties of Texas. Home-seekers should get in on the ground floor to-day, while land is cheap.

Livery, Feed and Sale

..STABLES..

A. G. KENNEDY,
PROPRIETOR.

Complete Outfits Furnished
on Call, Day or Night.
BEEVILLE, TEXAS.

A. G. KENNEDY,

DEALER IN

LIVE STOCK



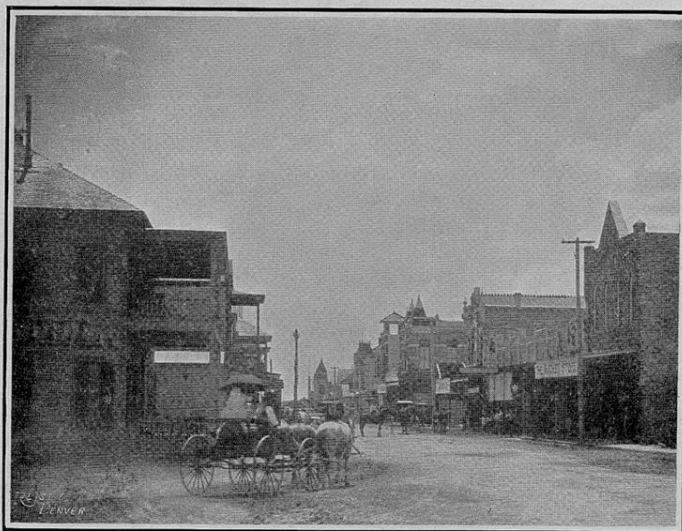
Cattle, Horses and Mules
Bought and Sold.
BEEVILLE, TEXAS.

A. F. LUTTS,

DEALER IN

**DRUGS, PATENT MEDICINES, PERFUMES,
SCHOOL BOOKS, STATIONERY, TOILET ARTICLES**
and Everything Kept in a First-Class Drug Store. Prescriptions a Specialty.

When in Beeville Don't Fail to Call
and Inspect Our Goods Before Buying Elsewhere.



A BEEVILLE STREET SCENE

G. C. Hatch & Co.

DEALERS IN

GENTS' FURNISHING GOODS

BOOTS, SHOES, HATS AND CAPS
Ladies', Misses' and Children's Shoes a Specialty

BEEVILLE, TEXAS

Kohler & Heldenfels' Successors

(The Heldenfels Estate)

DEALERS IN

LUMBER, SHINGLES, SASH, DOORS AND BUILDERS' SUPPLIES

Hardware, Furniture and Ranchmen's Supplies

BEEVILLE, TEXAS

R. LAW LUMBER CO.

HEADQUARTERS FOR

Lumber. Shingles. Sash. Doors. Etc.

WAUKEGAN BARBED WIRE.

Paints, Oils, Lime, Cement and Cisterns.

CEDAR POSTS AND WATER TROUGHS.

BEEVILLE, TEXAS.

J. C. CRISP, ATTORNEY-AT-LAW.

OFFICE OVER FIRST NATIONAL BANK,
BEEVILLE, TEXAS.

Civil practice attended to in all the State and Federal courts. Land Practice a specialty. Complete abstracts of titles to all Real Estate in Bee county. Abstracts also furnished from adjoining counties. Prompt and efficient attention given to Collections, Loans, Real Estate, and all business intrusted to my care in Bee and adjoining counties. Depositions carefully taken. Notary, Stenographer and Typewriter in office. German spoken. Have Safe Deposit Vault. References furnished on request. Long Distance Telephone, No. 5, in office.

C. E. COCHRAN & SON

WHOLESALE AND RETAIL
GROCERS

Washington Street.

BEEVILLE, TEXAS.

FINE JOB PRINTING IS AN ART!

Like a great painting from the brush of one of the world-famous masters well executed, neatly put up Job Printing is "a thing of beauty and a joy forever." On the other hand the mess turned out by many so-called printing offices and labeled "job printing" is an eye-sore to every one with the least artistic taste and should be used by no one. Always get the best printing obtainable, this you can do at

THE BANNER PRINTING OFFICE

BEEVILLE, TEXAS.

Where this Catalogue was Printed.



LINDELL HOTEL, BEEVILLE

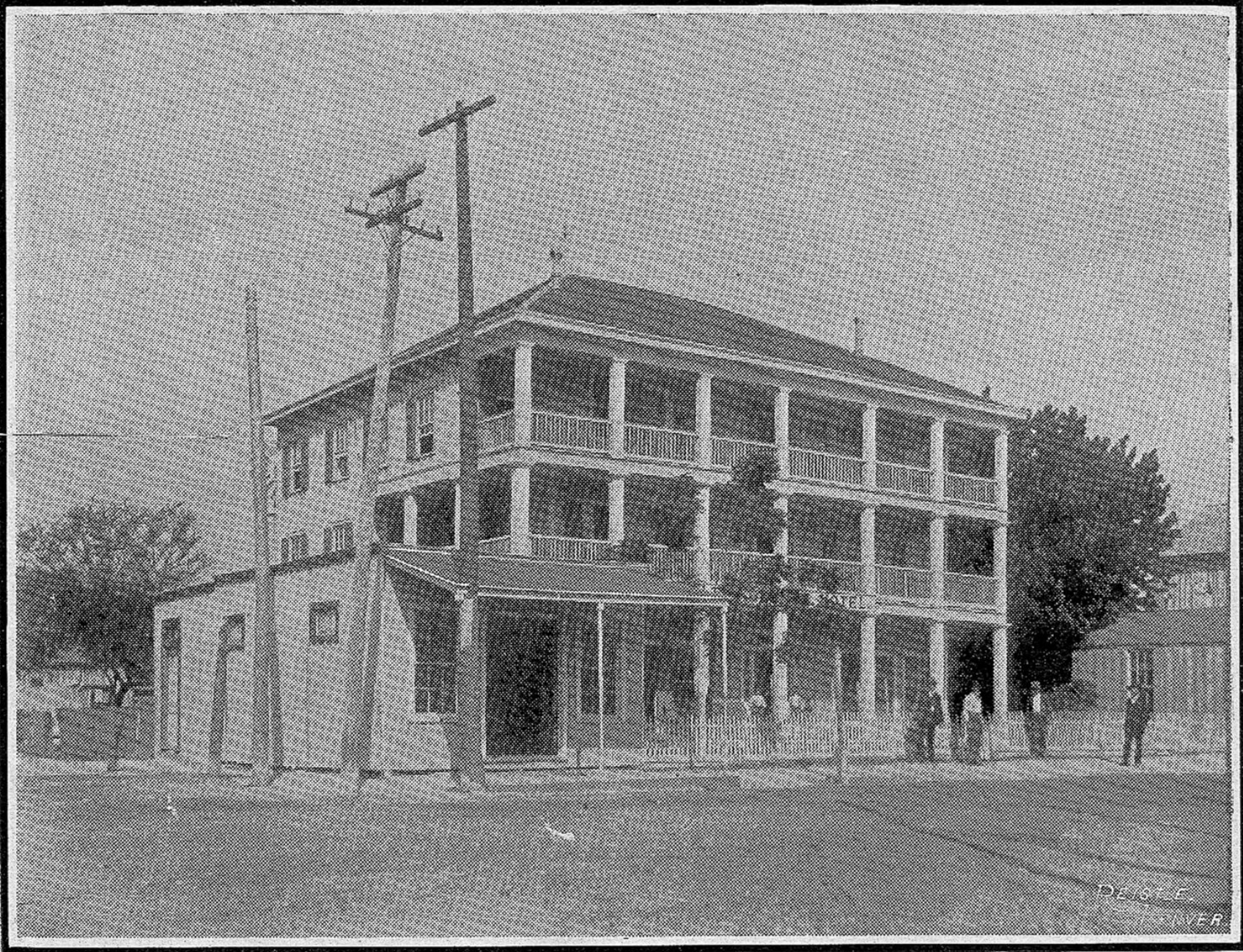
THE BEE COUNTY BANNER

FLUNG TO THE BREEZE BY HUOH F. MARR AT BEEVILLE, TEXAS.

Official Organ of the South Texas Truck and Fruit Growers Association.

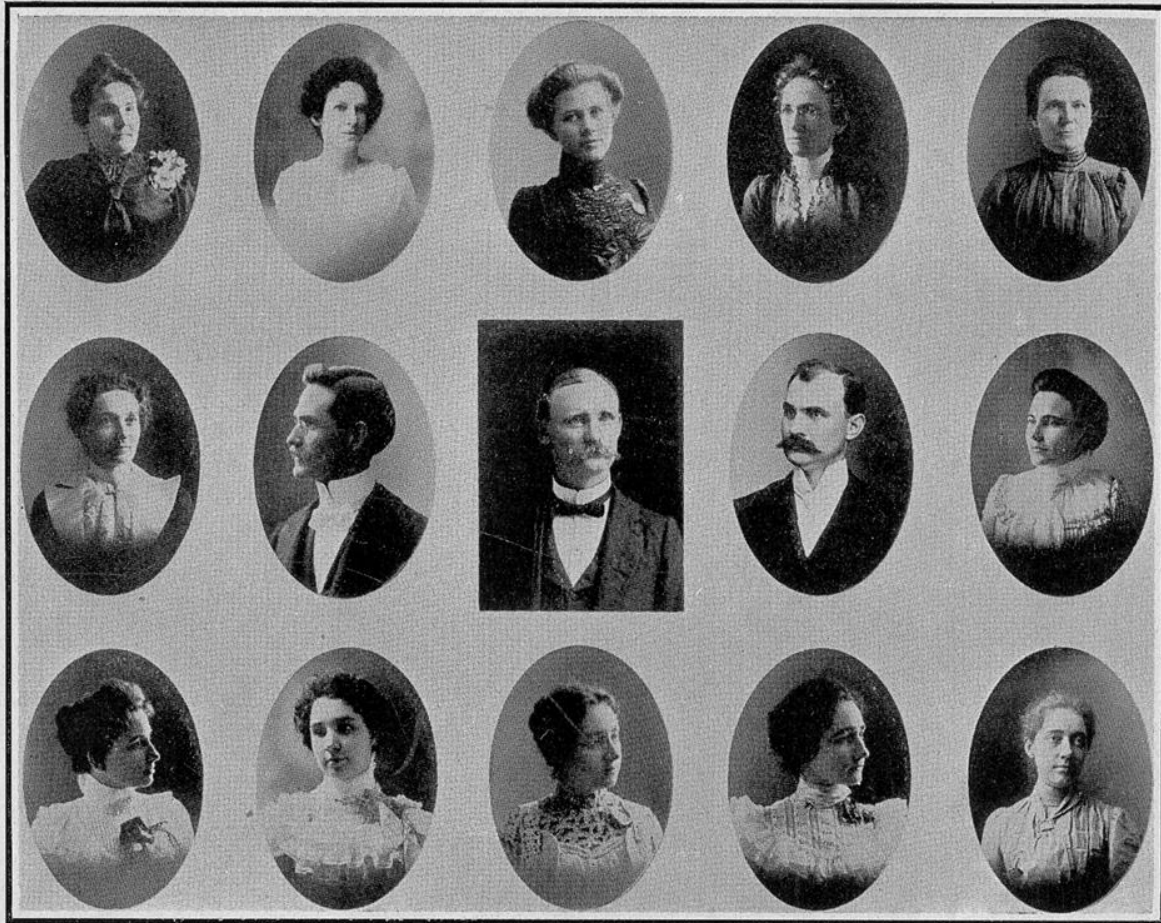
SUBSCRIPTION PRICE, \$1 A YEAR.

If you want to know all about Bee County and South Texas this is the publication to subscribe for. It tells the Truth.

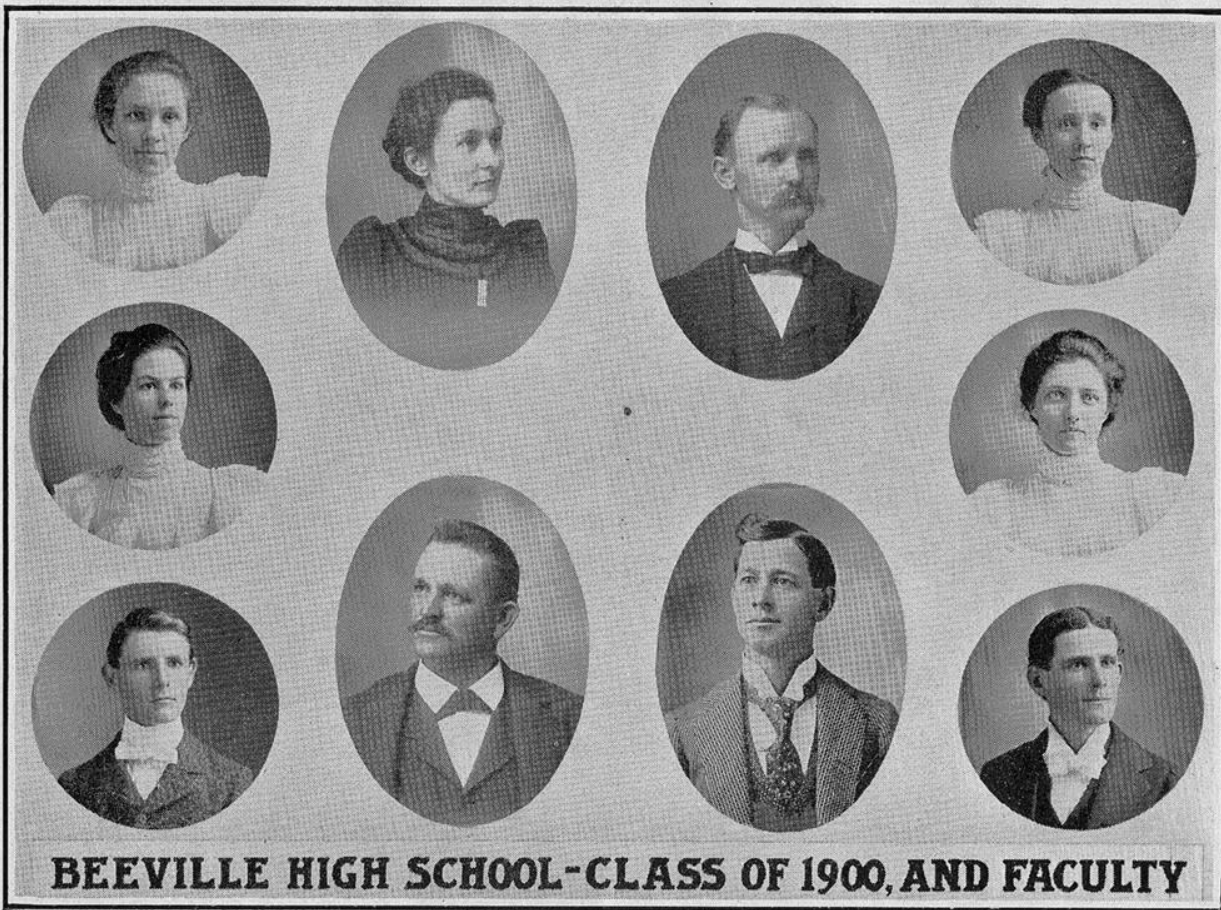


DEIGLE
BEEVILLE

LINDELL HOTEL, BEEVILLE



FACULTY FOR YEAR 1900-'01



BEEVILLE HIGH SCHOOL-CLASS OF 1900, AND FACULTY



BEEVILLE HIGH SCHOOL - CLASS OF 1901, AND FACULTY



MANDOLIN AND GUITAR CLASS

- | | |
|--------------------|--|
| 10. Sincerity, | 28. The habit of reading, |
| 11. Generosity, | 29. The proper kind of reading, |
| 12. Reverence, | 30. Our associates, |
| 13. Rudeness, | 31. Holiday temptations, |
| 14. Perseverance, | 32. Sacredness of property, |
| 15. Thoroughness, | 33. Respect for rights of others, |
| 16. Industry, | 34. The ideal boy, |
| 17. Frugality, | 35. Modesty in girls and boys, |
| 18. Opportunities, | 36. Texas Independence Day, |
| | 37. As is the boy, so is the man, |
| | 38. Advantages enjoyed by the American boy, |
| | 39. Work is the price of all good, |
| | 40. Conduct of the sexes towards each other. |

The attention of the parents who patronize these schools is called to this list of subjects. The teacher can do but little towards training the character of his pupils unless the parent co-operates with him by giving the same kind of instruction at home and by *training* the child to practice the virtues thus taught. By giving this co-operation, the parent can lighten the teacher's burden and, at the same time, render his own child an inestimable service.

THE HIGH SCHOOL.

Since the publication of the last catalogue, three years ago, great efforts have been made to improve the High School by raising the standard of proficiency for admission, by requiring more thoroughness in High-School work, and by slightly extending the course of study. These changes have somewhat diminished the enrollment, but they have given a much better class of material. The High School is now regularly affiliated in English, History, and Mathematics with the A. and M. College and with the University of Texas, its diplomas being treated by those institutions as evidences of fitness for admission.

The graduates of the High School now number twenty-nine, as follows: Class of '97, 2; Class of '99, 14; Class of '00, 6; Class of '01, 7. An Alumni Association has been formed which, it is believed, will prove a great benefit to the school as well as a powerful social factor in the community.

THE PHILOMATHEAN SOCIETY.

For four years this organization has persistently adhered to its original purpose—that of raising money and expending it for the im-

provement of the Schools. As results of its work, the school now has a well-furnished auditorium, a good piano, and a library of several hundred volumes. During the last year this Society has bought supplementary readers for the first, third and fourth grades, cleared itself of debt, and improved the school grounds, and it still has a comfortable cash balance on hand for use at the beginning of the next school year. It has been kindly aided in its work by many ladies and gentlemen outside of the school, and by Misses Estelle and Edith Dugat, Miss Edna Thompson, and Miss Mamie Sallee, teachers in the Music and Elocution Departments, to whom the thanks of the entire school are due for their valuable and generous co-operation.

MEXICAN AND COLORED SCHOOLS.

During the past year the Superintendent has been prevented, by the amount of teaching he has been compelled to do, from visiting these schools as frequently as he desired. It is believed, however, that the Colored School is in a more healthy condition than at any previous time in its history.

The principal, Mr. J. R. S. Hallowell, has manifested great interest in his work, and has maintained excellent discipline. The needs of this school are numerous, and the work it is doing is important, and I commend it to the generous consideration of the Board.

The children that attend the Mexican School do not remain in school long enough to be influenced to any great extent, as their parents are, in most cases, only temporary residents. Another great difficulty is the inability or indisposition of the parents to buy the few books necessary. I would recommend that the Board purchase a reading and number chart for the use of the teacher, and a small supply (say two or three dozen) First Readers. These would greatly strengthen the work of the teacher among these bookless, helpless children.

COURSE OF STUDY.



FIRST GRADE.

MR.S. GUSSIE FLOURNOY, TEACHER.

READING—Primer, Stickney's First Reader, chart and blackboard exercises, study of inflection and emphasis.

SPELLING—Words from the reader, lists of words given by the teacher, Benson's Speller to foot of page 17.

Home-Seekers Attention!

WHEN YOU VISIT TEXAS, and you should not fail to do so, don't fail to visit the *Coast Country*. It offers *Cheap Homes on Easy Terms* to the Man who wants a home. Truck Growing on the Sandy Lands, Cane in the Rich Bottom Lands, Rice, Cotton and Corn on the Uplands, offer opportunities for active, intelligent farmers second to no other country on the globe. A mild climate permits farming operations all the year round. Excellent school facilities are to be had in nearly every neighborhood, and the towns all have their free public schools open from seven to nine months in the year.

For Further Information Address

JOHN HOWARD,

Passenger and Immigration Agent of the Sunset Route,
HOUSTON, TEXAS.

or

W. J. CRAIG,

General Passenger Agent N. Y. T. & M. and G. W. T. & P. Rys.,
VICTORIA, TEXAS.

WE ARE THE
"PROPER ELEMENT!"

ARE YOU WITH US?

WE ARE HEADQUARTERS FOR

✦
✦
✦
✦
HARDWARE
—AND—
IMPLEMENTS
✦
✦
✦
✦

Windmills, Pipe, Casing, Pipe-Fittings,
Tools, Valves, Cylinders, Etc.
Plows, Planters, Harrows, Cultivators, Rakes,
Mowers, Buggies, Wagons, Stoves,
Sewing Machines and Gasoline Engines.

COTTON ▲ BUYERS.

BURROWS
HARDWARE ✦ COMPANY
BEEVILLE, ✦ TEXAS.

FOR TEACHERS.

History of Education, by Levi Seely, Ph. D., professor of Pedagogy in New Jersey State Normal School. Cloth 12 mo, 343 pages, price.....\$1.00.

Seely's History of Education is a condensed presentation of the development of education in different countries from the dawn of civilization to the present time. It is just such a treatise as the average teacher should have for ready and reliable reference. It should be read by all grades of teachers.—J. M. GREENWOOD, *Superintendent of Schools, Kansas City, Mo.*

Halleck's Psychology and Psychic Culture, by Reuben Post Halleck, M. A., (*Yale*) principal Louisville Male High School. Cloth 12mo, 368 pages, illustrated, price.....\$1.25.

Halleck's Psychology is in my opinion the best book that there is on the subject for high school and academy students. It would also serve as an excellent introduction to the subject for any adult who wishes to take up the study of psychology without the help of a teacher.—F. C. FRENCH, *Professor of Philosophy in Vassar College.*

Roark's Method in Education, a Text-Book for Teachers, by Ruric N. Roark, Ph. D., dean of Department of Pedagogy, State College of Kentucky, author of "Psychology in Education." Cloth 12mo, 348 pages, price.....\$1.00.

Single copies of the above books will be sent by mail, postpaid, on receipt of price.

AMERICAN BOOK COMPANY, PUBLISHERS.

New York.

Cincinnati.

Chicago.

ADDRESS A. H. WILKINS, DALLAS, TEXAS.

JESSE FRENCH
S T A R R
K N A B E
R I C H M O N D
P I A N O S



JESSE FRENCH
P A C K A R D
O R G A N S



JESSE FRENCH
PIANO AND ORGAN CO.

AMERICA'S LARGEST AND BEST MANUFACTURERS AND DEALERS.

Pianos and Organs at Correct Prices, Sent on Approval,
and Guaranteed. Sold on Terms to Suit any Purchaser.

*** ADDRESS ***

FRANK S. TAYLOR,
Y O A K U M , T E X A S .

The School-Book Trade of the
B. F. JOHNSON PUBLISHING COMPANY

of Richmond, Virginia,
HAS INCREASED

More than TWENTY FOLD within the past Four years,
and nearly THIRTY FOLD within the past Five years.

“THIS phenomenal development,” said the President of the Company in a recent address, “has been due partly to the fact that we were the first to champion the right of our school children to books peculiarly adapted to their needs—books that would fittingly recognize the achievements of our own people—books that would have regard for the physical and moral as well as the intellectual needs of the child. In planning our readers, for instance, we determined that they should not contain a single trashy lesson, not a line to awaken a vile appetite, not a hint of the impure or vicious, no belittling of anything that is noble, nothing that is sacrilegious or untruthful, no pretty writing of doubtful tendencies. And we determined that they should not be sectional—that the authors should not be all grouped around Boston or New York or Richmond or Charleston. We determined that in them Southern authors should have fitting recognition, but we did not recognize Southern authors at the expense of the authors of other sections. In planning our histories we determined that prejudice should not be seen sticking out at every turn; that there should not be an unfair word in them; that there should not be a scornful fling in them; that there should not be a bit of poison in them; that there should be nothing but the truth in them.”

It is not claimed that the Johnson text books are perfect—nothing is perfect—but it is claimed that they meet actual conditions. They were cut to fit and they fit. They were made to teach and they can be taught. They stand the test. They bring results.