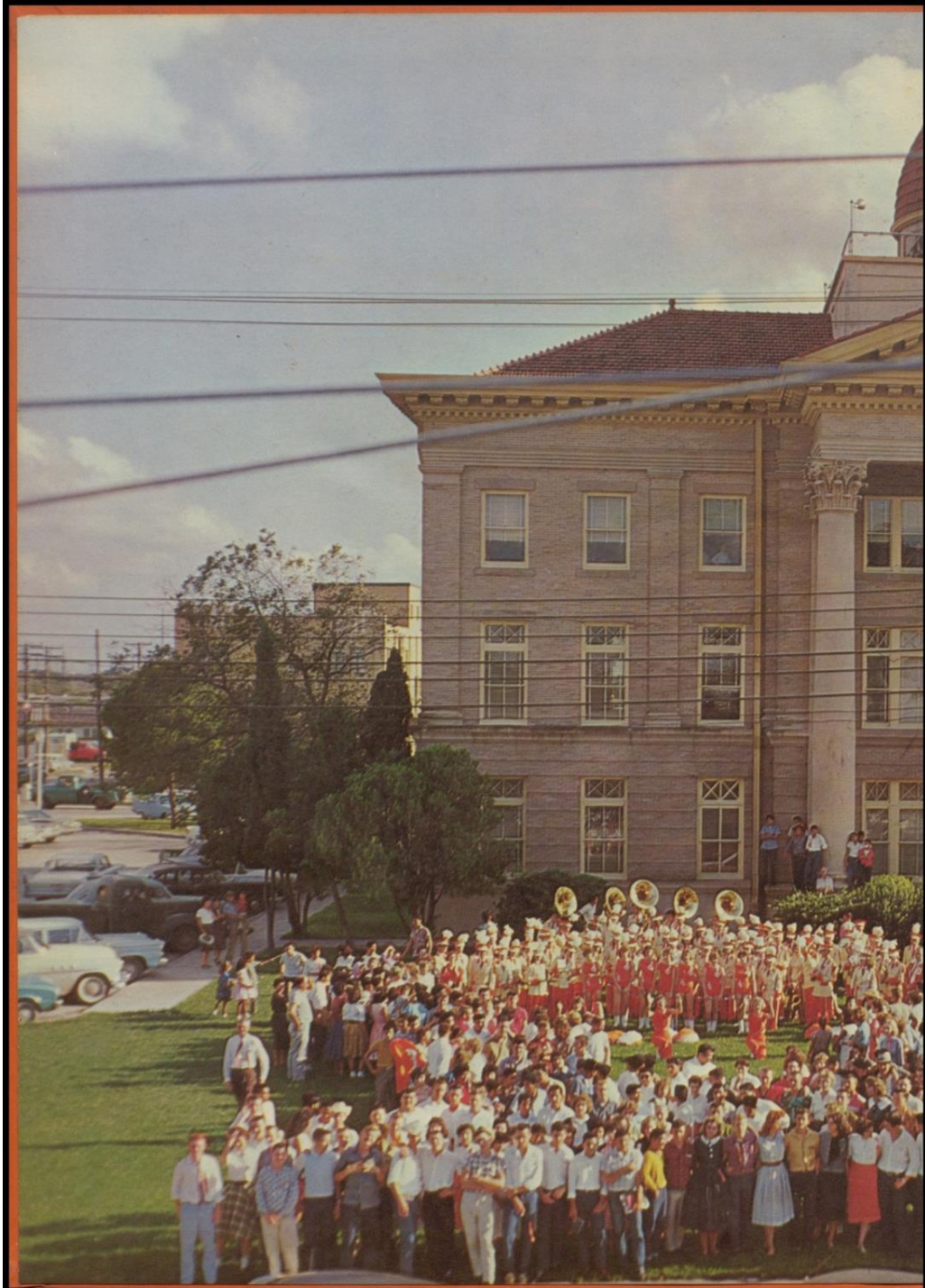
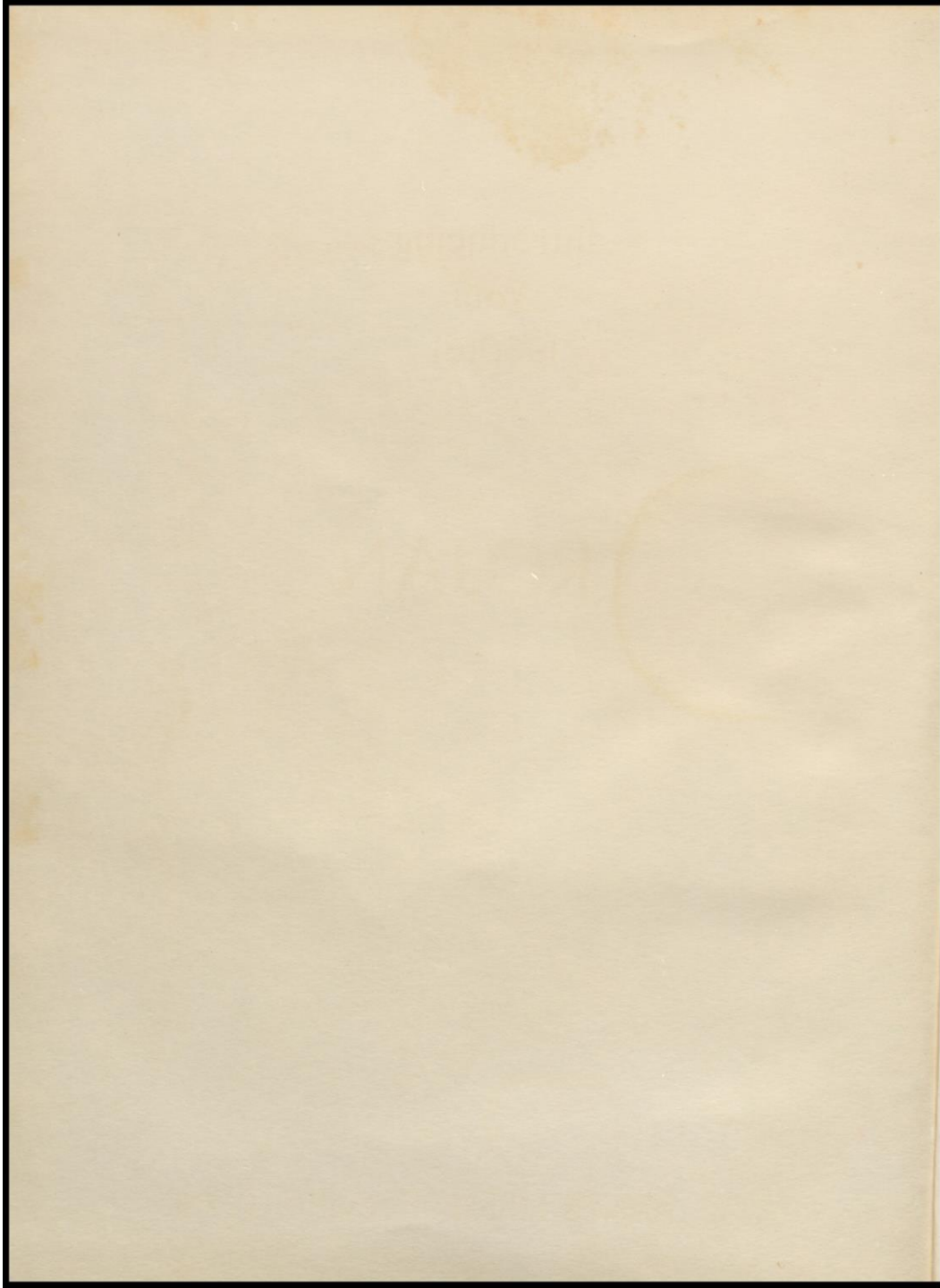


TROJAN







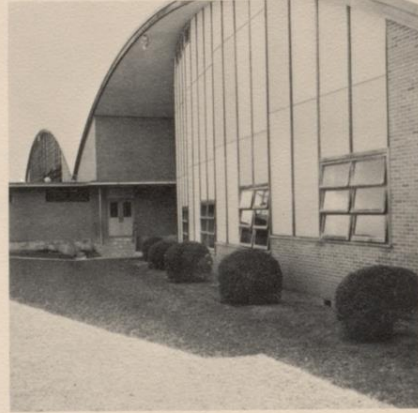
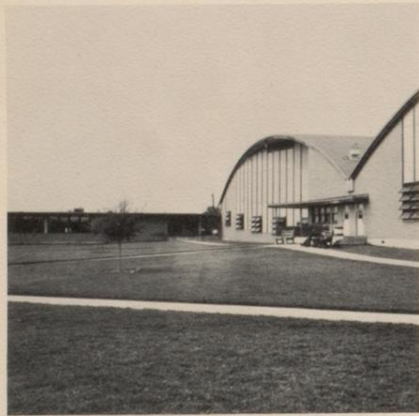
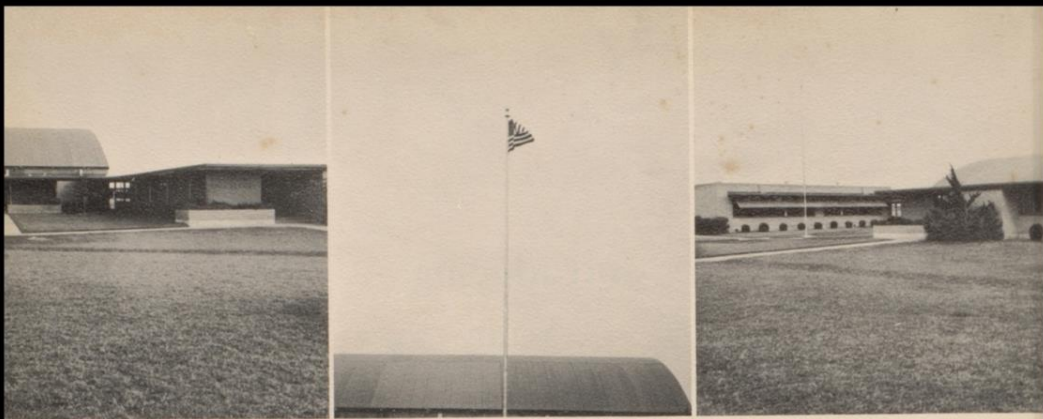




Introducing  
Your  
1960-61

# TROJAN

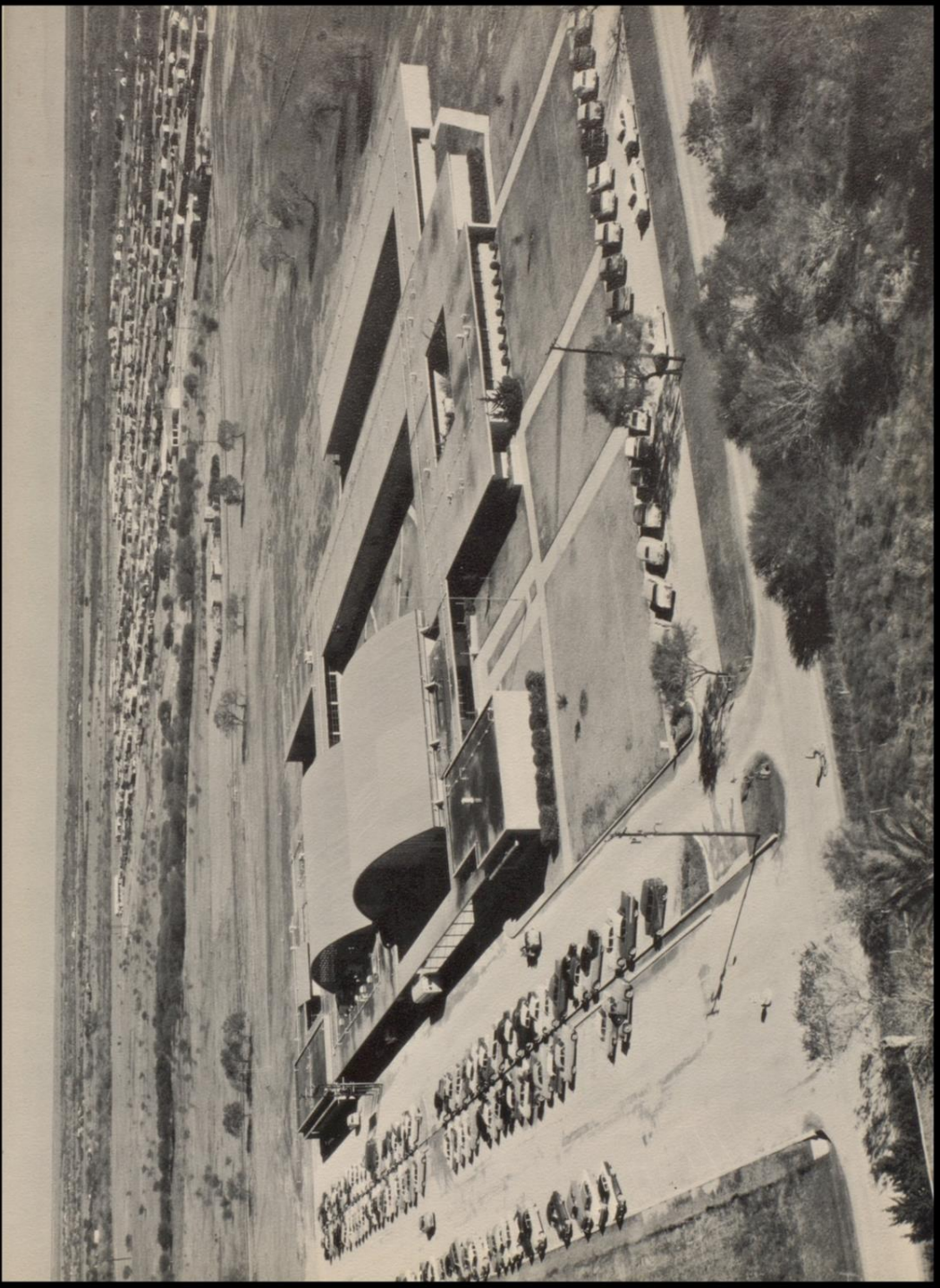
A. C. JONES HIGH Beeville, Texas



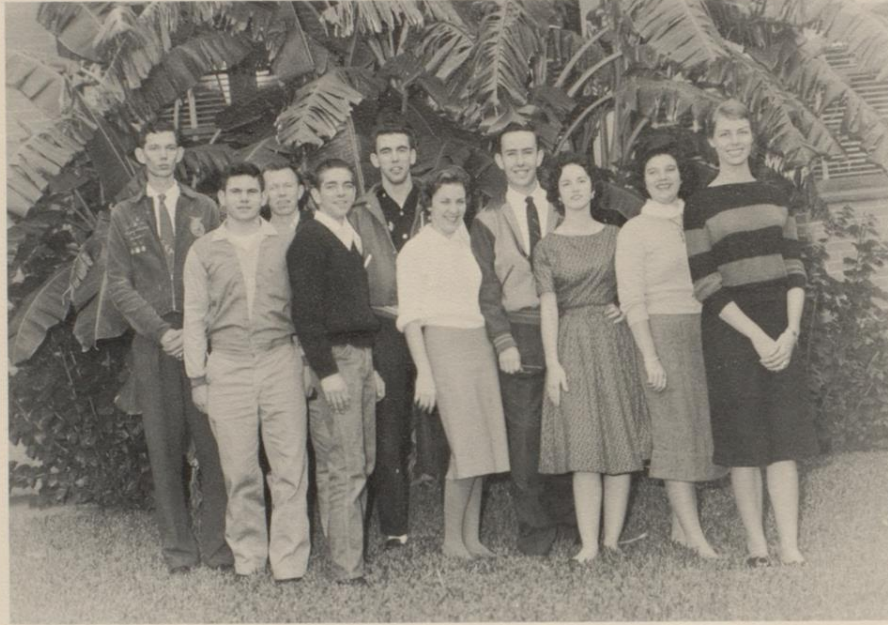
## ALMA MATER

We pledge our honor to the orange and white,  
We will be loyal through the day and night, and  
Even when we are losing we are winning too,  
With our high spirits and hearts so true.





# FOREWORD



It is with great pleasure and pride that we, the ANNUAL STAFF, present this book to you, the STUDENT BODY.

The school year 1960-61 has not only been an important one in world affairs but has also been momentous, to JHS where many changes have taken place, some of which included a record enrollment, new policies, and a stepped up scholastic rating for us. We hope that this year not only rated high statistically, but was a most enjoyable and memorable one for you as well it was for us.

It has been our goal and effort to capture the events and highlights of this year. As we, the Staff, leave to go on to fields of higher education, or to part on our separate ways, we leave this book as our epitaph. We hope that it will bring a smile or pleasant memory as its pages are opened in the years to come. If this is accomplished, then our efforts have not been in vain.

YOUR ANNUAL STAFF

Editor



# DEDICATED:

. . . . . to the unsung hero that lies within the heart of every student of A. C. Jones High School;  
. . . . . to the power behind the MIGHTY Trojan Machine, whether it be in athletics, music, U. I. L. contests, or the classroom.



. . . . . to the spirit that reveals itself not only in the joy of winning but also in the loyalty to our school even when we lose. It is to this great spirit of JHS that we, the 1960-61 ANNUAL STAFF, dedicate our efforts on this book, to the "FIGHTING TROJAN SPIRIT"

(Acie Hickman rides Trojan Horse Lily)

# BOARD OF EDUCATION



Left to Right: Bob Adkins, Alfredo Moreno, James Riggle, Rocky Reagan, Jr., President, Dan B. Conoly, Edwin Turnipseede, and Bill Cude.





The memories recalled by your school annual should be among the most pleasant of your life. You will cherish them or regret them almost in direct relationship to the successes you enjoy in high school. Fortunately, your success in school need not be left to chance. Your own efforts and attitudes can make your education serve you throughout a lifetime. Your teachers and administrators can help guide your program, but you must fulfill the responsibility to yourself, your parents and to the nation that made your educational opportunities available. As Americans we believe that we are masters of our own destinies and that, if we are to take full advantage of our way of life, an education is a necessity. Thomas Jefferson presented his thoughts on the importance of education in a democracy thusly:

"If a nation expects to be ignorant and free, in a state of civilization, it expects what never was and never will be."

Your nation will be neither stronger nor weaker than you make it through your educational opportunities.

*A. A. Roberts*

Superintendent of Schools  
Beeville Independent School District

# SCHOOL BUSINESS OFFICE



Miss Anna Mary Dorsey, Assistant Tax Collector; Miss Jean Luthringer, Secretary; Mr. Woodrow Ham, Business Manager.



Mrs. Ruby Page, Director of Cafeterias.



M. G. Smith, Maintenance Helper, James Luthringer, Director of Transportation, Alton Ball, Maintenance Supervisor.





The year 1960-61 has been one of the best since I came to A. C. Jones High School. The new wing on the building and Mr. Hatcher on the administrative staff have been welcome additions. The enthusiasm of an efficient faculty and the fine spirit of the student body have been an inspiration to me. May your goals be worthy, your efforts untiring, and your achievements such that great service will be rendered and much happiness will be yours.

*Lester W. McCoy*



Mrs. Ina B. West  
Librarian



Mr. George F. Elam, Jr.  
Counselor  
Advisor, Student Council





The future of the world depends to a large degree on the Youth of America. This young generation, which is now engaged in a great struggle against communistic forces that would destroy our country, must solve many problems of the present and future if we are to live in peace.

Therefore, since the hope of the world depends upon the thoughts and actions of American youth, it is imperative that we all keep peace in our hearts. If the whole world and all that is in it be thrown into confusion, Youth must endure all things with an equable and peaceful mind. Such conduct will encourage every American, in the midst of our present difficulties, to have a clear judgment about our difficulties, and to minister the fitting remedy for them.

Congratulations to the 1961 Trojan Annual Staff and their Sponsor for arranging this splendid pictorial history of the activities in A. C. Jones High School.

Best Wishes,

Assistant Principal

# AUXILIARY PERSONNEL



Mrs. Donna Gallagher  
Secretary, Superintendent



Mrs. Shirley Hensley  
Secretary, Principal



Adam Berger  
Custodian



Mrs. Bonnie West  
Manager, Cafeteria



# ATHLETIC DEPARTMENT



Mrs. Yvonne Curbo  
Girls' Physical Education



David W. Green  
Physical Education and Coach



Tex L. Kassen  
Athletic Director and Coach



Don Scott  
Basketball Coach and Biology



Vernon Ullmann  
Coach and Social Studies



¡Hasta la vista!



Look Mom, - no gravity!



Larry Erler  
Agriculture



Kenneth Faubion  
Agriculture



Mrs. Ruth A. Gill  
Homemaking



Mrs. Christine Muennink  
Homemaking

V  
O  
C  
A  
T  
I  
O  
N  
A  
L



Greenhand Farm Skills Team



Today's Students - Tomorrow's Homemakers



D  
E  
P  
A  
R  
T  
M  
E  
N  
T



Mrs. Brazel Dougherty  
Secretarial Training  
Annual Sponsor



John W. Henshall  
Industrial Arts



John Hensley  
Distributive Education



Charles T. Norton  
Typewriting



Z. V. Smith  
Industrial Cooperative  
Training



There's still a demand for secretaries in this machine age.



Applying a Master's Touch

# LANGUAGE ARTS



Allen C. Donaho  
Spanish



Edwin Landry  
French & English



Mrs. Iola Olsen  
Latin



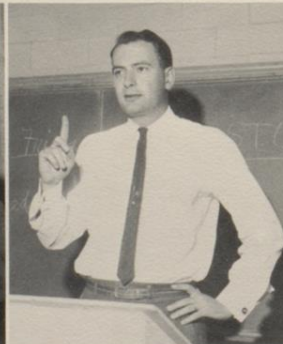
We learn by listening



Teamwork in teaching too



Larry A. Payne  
English & History



Harral Peacock  
Speech



# DEPARTMENT



Miss Jean Dugat  
English & Journalism



Mrs. Pat Harrell  
English



Mrs. Dorothy Mabe  
English



A formidable array of Beauty plus brains



It takes money to run a paper



Miss Marjorie Miller  
English



Mrs. Marcia Pfeil  
English

# MATH DEPARTMENT



Cecil Allen  
Plane Geometry &  
Chemistry



Robert D. Horn  
Math & Bookkeeping



William F. Houston  
Math



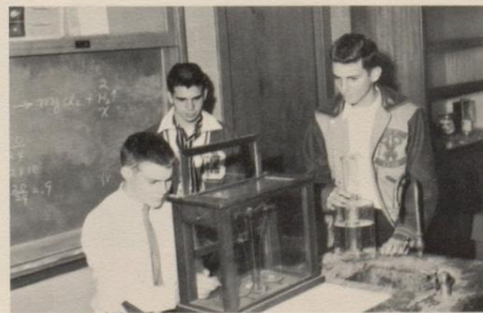
Mrs. Doris Kuhnert  
Math



Mrs. Hazel Lowrance  
Math



A teacher's work is never done



Studying today for a balanced tomorrow



# SCIENCE DEPARTMENT



Warren Colvin  
General Science & Biology



Harold Hall  
Biology



Joe W. Hill  
Chemistry & Physics



Luther Upton  
General Science



Coach trains scientists as well as athletes



Danger, Men at Work!

# SOCIAL STUDIES



Joe L. Batchelor  
Civics



James L. Gallagher  
American History



Max M. Moore  
History

# MUSIC



Jack H. Felts  
Band and Choral

# DRIVER EDUCATION



Urban R. Pfenninger  
Instructor



NATIONAL & WORLD AFFAIRS IN PERSPECTIVE

# Senior Scholastic

OCTOBER 19, 1960

VOLUME 77

NUMBER 6

SPECIAL ISSUE

## U.S. AND WORLD AFFAIRS ANNUAL



S  
E  
N  
I  
O  
R  
S

40  
SCHOLASTIC MAGAZINES

Price of this Special Issue: 25 cents



## SENIOR CLASS OFFICERS

George Brin - Secretary-Treasurer  
Jimmy Turnipseede - Vice President  
Mike Sturm - Sergeant at Arms  
Robert Baylor - Parliamentarian  
Jimmy Polozeck - President

MOTTO: Upward ever, Backward never.

COLOR: Baby Blue and Silver

FLOWER: Baby Blue Carnation

SONG: "He"



ALICIA ADAMEZ  
Spanish Club, 3, 4; FTA 3, 4; Secretarial Arts 4; Powder  
Puff Game 3

FRANCES ALAMAREZ  
Spanish Club 3, 4; Secretarial Arts 4

STANLEY ANN ANDERSON  
Library Club 2; Annual Staff 2, 3, 4; Band 2, 3; Latin  
Club 3, 4; FHA 4; Majorette 3; Basketball Princess 3;  
Student Council 4; Office 2, 4; National Honor Society  
3; Prom Serving Committee 2.

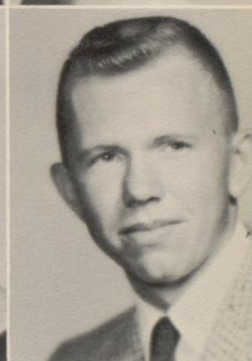
RUTH AUSTEN  
One Act Play 3; Makeup, Junior Play 3; Thespians 3, 4;  
Science Club 2; Junior Historian Club 3; Choir 2; An-  
nual 3, 4; Art Editor, Annual 4

PATSY BALDERAS  
Spanish Club 3, 4; FTA 2-4; Prom Com. 3; Science  
Club 2; Secretarial Arts 4; Speaking Choir 2; Certi-  
ficates; Plane Geometry, Spanish, English III, Book-  
keeping.

ROBERT BALL  
Band 1-4; All-District 2, 4; President 4; Equip. Mgr. 4;  
Stage Band 3, 4; German Band 3, 4; Choir 2-4; Regional  
Choir 3, 4; All State Choir 3; Texas State Choir 4; Choir  
Certif. 3; Annual Staff 4; Junior Historian Club 3; Span-  
ish Club 3, 4; Key Club 3, 4; Thespian Club 4; One Act  
Plays 3; Jr. Play 3; Fire Monitor 3, 4; 1st Div. Solos 3.

DOROTHY BALTAZAR  
Band 2-4; Choir 3, 4; Pres. 4; FTA 2, 3; Science Club 2;  
Class Song Com. 2; Prom Com. 3; Spanish Club 3, 4;  
Powder P. Game 3.

ROBERT BAYLOR  
FFA 2-4; Ch. Conductor & Livestock Judge 2; Chap.  
Farmer Deg. 2; Certif. 2; Pres. Tri Co. Dist. 3; Lone  
Star Farmer 3, Outstanding in FFA pub. Sp. 3; Farm  
Bureau Award 3; Area V.P. 4; State Livestock Judging  
Team 3; V.P. Area 4; Prom Com. 3; Parliamentarian  
Sr. Class.





JOHN BEASLEY

Junior Play Committee 3; Junior Play 3; Football 2; Key Club 3, Sec-Treas. 3; Annual Staff 4; Golf Team 2-4; Thespian Play 4; Industrial Arts Club 4; Christmas Pageant 3



NORMA JEAN BEEBE

Transferee from Corpus Christi; Annual Staff 4; Latin Club 2; Newspaper 3



JOHNNY BELL

Baseball 2-4; Football 3; Key Club 3-4, Treasurer 3-4, Thespian 3-4, Thespian Play 3-4; Jr. Play Stage Crew 3; Spanish Club 3; Trojan Staff 2; Industrial Arts Club 4; Annual Staff Photographer 4; Prom. Comm. 3; Senior Play 4; Junior Olympics, 3rd Pl Chinning; Bonfire Com. 4



PINKIE LEE BENNING (Transferee)

Junior Historian, 3; Choir 2, 3; Press Club 3



MARY BENSON

Advanced Biology Class 3



RICHARD BERTRAM

Baseball 2; Key Club 3-4



GLORIA BORREGO

Usher in one-act plays 2; Speak. Choir 2; Motto Com. 2; Science Club 2; Powder-Puff game 3; Chair, Prop Comm, Jr. Play 3; Prom Comm. 3; Spanish Club 3-4; Choir 3-4; Vice Pres. 4; D. E. Club 4, Reporter



GEORGE BRIN

Nom. Soph Fav; Homecoming Escort 2; Master of Ceremonies, Jr-Sr. Ban. 2; JHS Golf team 2-3; Class Flower Comm. 2; Annual Staff 3-4; Entertain. Annual Dance; Spanish Award 3; Nom. Jr. Fav; Cand. Am Field Serv. 3; Thespian Play 3-4; Jr. Play; Thespians 3-4; Sr. Class Sec; Spanish Club, Pres. 4; Football 4; Most Handsome Sr. Boy



TERRY BRISCOE

Key Club 2; Loading Candy Machines 3; Young Democrats Club 3; New Writer for Speech II program; Stage Band 4; Ferman Band 4; Sr. Play Comm. 4



CHERRY BROADWAY

FHA 1; Newspaper 1; Choir 3-4; Treas. 4; A-Cappella Choir 3-4; Regional Choir 4; Spanish Club 3-4; Jr-Sr Prom Comm. 3; Band Sec. 4

BARBARA BURNS

Soph Reporter; Office 2-4; Lib Club 2; Dinner Belle Club 2-4; FHA 2-4, Reporter 2, Treas. 3, 1st V.P. 4; Served at Prom 2; Spanish Club 3-4; Thespians 3-4; Jr. Class Play; One-Act Plays 3; Thespians Play 4; Annual Staff 4; Sec. Arts Club 4; Indust. Arts Sweetheart 4



JACK BURNS

Latin Club 2-4; Key Club 2-4; Thespians 3-4; Thespian Play 3-4; One-Act Play, All-Star Cast 3; Senior Play 4

BETTY CAFFALL

Prom Server 2; Library Club 3, Sec.; Latin Club 3, Reporter; TROJAN Staff 3, 4, Circulation Manager 2, Associate Ed. 4, TROJAN Sweetheart 4; Quill and Scroll 3, 4; Reporter 3, 4; Sadie Hawkins Day Chairman; State Delegate for Veep of Latin Club; Class Ring Comm., 3; Junior Play Comm. 3; Publicity Chairman; Citizenship Award 3; National Honor Society, 3, 4, Sec. -Treas. 4; Student Council 4, Recording Sec.; Who's Who 4; English II Award, Plane Geometry Award; Powder Puff Game 3.



TOMMY CAMACHO

FFA 1, 2; Latin Club 3; Indus. Arts 2.

JOSIE CANTU

Class Flower Comm. 2; Choir 3, 4, Sweetheart 4; Spanish Club 3, 4; DE Club 4; Powder Puff Game 3.



LYDIA CASAREZ

Choir 2; Prom Committee 3; Sec. Arts Club 4.



JOEL CASE  
Science Club 2-4; Lettermans Club 3-4; Basketball 3, 4.



MARY HELEN CASTILLA  
FHA 3; Sec. Arts Club 4; Office 4



BOB CLARK  
Basketball 3, 4; Track 3, 4; Football 4; Lettermans Club 4; Nominee, Most Athletic, Most Handsome, All-School Favorite; Senior Favorite; Spanish Club 4.



GEORGE CONTRINO  
Key Club 3, 4; Spanish Club 4; Junior Play 3, Stage Manager; Thespian 4; Thespian Play 4, Lights.



FRED COX  
Basketball 2-4; Track 2-4, Regional Meet 3; Letterman's Club 2-4; One Act Play 3; Thespian Play Comm. 4; Annual Dance Comm. 4; Annual Staff 4; Junior Play Comm. 3, Props.; Choir 4.



LINDA COX  
DE Club 4, Sweetheart 4; FHA 2, 3.



RALPH DAVIS  
Basketball 3, 4; Prom Committe 3.



PILAR DELEON  
Football 2-4, All-District 4, Tri-Captain 4; Baseball 2-4; Track 2-4; Letterman's Club 3, 4.



CAROL DEMENT

Library Club 2-4; FTA 2; FHA 2-4; Junior Historian 3;  
Jr. Play 3; One Act Plays 3; Annual Staff 3, 4, Bus. Mgr.  
4; Sec. Arts Club 4



MARY ANN DERUSSE

FTA 4; Band 2, 3; DE Club 4

LEON EASON

Library Club 3; Band 2, 3;



CHESTER EVERETT

Band 2; I. C. T. 4

MARY LOUISE EVERETT

Trojan Staff, Ass't Sports Ed. 2; Sports Ed. 3; Asso't Ed.;  
Thespians 3; Secretary 4; Quill & Scroll 3, 4; FTA 2, 3;  
Nat'l. Honor Soc. 2, 3; Pres. 4; Latin Club 3; Spanish  
Club 4; Who's Who, 4; Nominee, Most Likely to Suc-  
ceed; One Act Plays 2; Thespian Play, 4; Jr. Play 3;  
Readywriting 3rd in Dist 2; 1st in Dist. 3; Office 2-4;  
Prom Chairman 3; Extemp. Sp. 2nd in Dist. 3; English  
Award 2; Top 3% Nat'l Merit Schol. Test 4; Speaking  
Choir 3



MELISSA EVERETT

FTA 4; Spanish Club 3, 4; Library Cl 3; Prom. Com. 3;  
Powder Puff Game 3

ROBERT FRASER

Trojan Staff 3; Key Cl. 3-4; Band 1, 2; Spanish Cl. 3, 4;  
Science Project 3, 4; Jr. Play; Thespian Play, 4.



VIRGINIA GALLAGHER

FHA 3, 4; Library Cl 2.



ELOY GALVAN  
D. E. Club 3; ICT 4



DOMINGO GARCIA  
Baseball 2, Lettered 2; "B" football 2-3; Letterman's  
Club 4; DE Club 3; ICT Club 4; Intramural Basketball 3



MARY GARZA  
Choir 3-4; Powder Puff game 3; Spanish Club 3-4; FTA  
2; DE Club 4, Sec-Treas.



CARLOS GOMEZ  
Choir 4; Spanish Club 3-4; Decorating Com, Jr-Sr Prom  
3; Intramural Basketball 2



CLAUDE GOTTHARDT  
Basketball 2-4, Cage Classic All-Tourn. Team 3; let-  
tered 3-4; Outstand. Basketball Player Award 3; Base-  
ball 2-4; Lettered 2-4; Lettermans Club 4; Key Club 4;  
Trojan Staff 4; Production Manager; Senior Class  
Reporter



MAYNARD GREEN  
Trojan Staff 2; Key Club 2-4, V-P 3, Pres. 4; Band 2-4;  
Prom Com. 3; Intramural Volleyball 3



ADOLFO GUERRERO  
DE Club 2-3



GILBERT GUERRERO  
Science Club 2; DE Club 3-4



CLINTON HAM

Football 2-4; Track 2-4; Prom Com. 3; Lettermans Club



SARAH KAY HANDY

Trojan Staff, reporter 2, man. ed. 3, ed.-in-chief 4; Latin Club 2-4; Pres 3; Office 2-3; NHS 2-4, V-P 4; Powder Puff Game 3; Quill & Scroll 3-4; Jr-Sr Banquet Chair. 3; FTA 2-4; Whos Who 4; Sec. Arts Club 4; Latin and Scholarship Medal 3; Eng. III Cert. 3; Welfare Chair. 3-3; Served Jr-Sr Banquet 2; Class Motto Com. 2; Class Secretary 3; Nom. Most Likely to Succeed 4; 1st UIL Spelling 3; UIL read-writing 2; Latin I, Eng II & Biology Cert. 2.

SARAH HARRIS

Latin Club 2-3; Prom Com 3



LESLEY HENRY

FFA 2-4; Greenhand & Chapter Farmer, Treas. DE Club 4

BEN HERNANDEZ

Transferee, Houston, Texas  
Latin Club 3-4; Intramural Basketball 3; Latin Ass'ns. 4



KENNETH HINDERMAN

Football 2-4, lettered; Basketball 2-4; lettered; Basketball 2-4; lettered; Lettermans Club; Most Athletic 4; Track 2-3, lettered; Baseball 2-4; Trojan Staff

CONNY HOLMQUIST

Foreign Exchange Student; Trojan Staff 4, News Editor; Student Council 4



FLORETTE HUEBNER

Sec. Arts Club 4; Prom Committee 3 2;



JIMMY JACKSON

Key Club 2-4; Pres. 2; Thespian 4; Thespian Play 4; NHS 3-4; Junior Play 3; One-Act Plays 3; Thespian Play 4; Nom. Most Likely to Succeed 4; Spanish Club 3-4; Prom Com. 3; Library Club Beau 3; Senior Ring Com; Golf 2-3; Powder puff Cheerleader 3; Indus. Arts Club; Entertainment for Jr-Sr Banquet, Stud. Coun., 1960 Annual Dance

BARBARA JOHNSON

Choir, Librarian 3; Volleyball Captain



SHIRLEY KIRK

Spanish Club 3-4; Librarian 3-4; Prom Decor. 3; FTA 2

BETTY KOENIG

FHA 2-4, hist. 2, Parl. 3, Cor. Sec. 4; Library Club 2-4; NHS 2-4; Office 2-4; Thespians 4; One-Act Play 3; Thespian Play house com. 4; Sec. Arts Club 4; Welfare Chairman 3

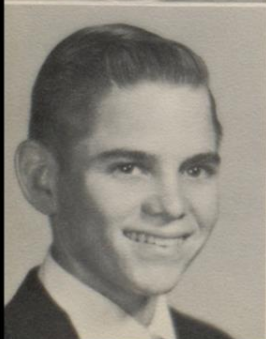


NANCY LAWSON

Office 2-4; Annual Staff 3-4, Lay-out Ed. 4; Sweet-heart, Annual 4; Latin Club 4; NHS 3-4; Indus. Arts Club 4; Most Likely to Succeed 4; Whos Who 4; Chemistry & Am. Hist. Medals 3; Make-up, One-Act Play 2

SERAFIN LEAL

Science Club 2; DE 3-4, V-P 4



JAMES LEETON

Key Club 2-4, Social Chairman; ICT Club, Pres 4

JULIAN LONGORIA

Spanish Club; Choir



ROXIE ANN LOWE  
Transferee, Rio Grande City, Texas  
Band, Head Majorette 2; Beeville Band 3-4

HORE LUNA  
Trojan Staff 2; Science Club 2; Spanish Club 2-4; FTA  
2; Served Jr-Sr Banquet 2; Class Color Com. 2; Powder  
Puff Football 3; Ring Com. 3; Prop Com Jr Play 3; Choir  
4; Sec. Arts Club 4

JAYNE LUNDSCHEN  
Latin Club 2-3; Roman Senate 4; Prom Com. 3; FHA 2;  
Sr. Ring Com.; Intramural Volleyball 2-4; Trojan Staff  
2; Annual Staff 2

PHYLISS MCGUILL  
FTA 2-4; Student Council 2-4; Annual Staff 3-4; Prom  
Com. 3; Spanish Club 3-4, Sweetheart 3; United School  
Fund Princess 4; Basketball Princess 3; Sr. Favorite 4;  
Football Sweetheart 4; Nom Homecom. Queen 4; NHS  
3-4

PAT MCWHORTER  
Prom Com. 3; Dance Band 2; Marching Band 2-4; Con-  
cert Band 2-4

SHARON ANN MARION  
KIBL newscaster 2; One-Act Play 2; USF Chair. 2;  
Thespians 2-4, Thespian Play 4, Pres. 4; Jr. Play 3;  
FTA 3; Eng. III Medal 3; NHS 3-4; Student Council 4;  
Sec-Treas. FTA 4; Thespian Sweetheart 4; Trojan Staff  
4; Spanish Club 4

AUBREY MARTIN  
FFA 2-4, Greenhand Rep. 1, Chaplain 2, President 3,  
Rep. 4; Annual Staff 2-4; Band 2-4; All-Dist. 3-4; Brass  
Choir 3; NHS 3-4; Junior Play 3; Thespian Play 4; Quill  
& Scroll 3-4; Thespians 3-4; Jr. Prom Com. 3; Fire Mo-  
nitor 3; Most Likely to Succeed 4

CARL MARTIN  
Transferee  
Radio Club 3; Biology Club 2; Student Council 2; Alge-  
bra Club 3; Am. Hist. Club 3





JO ANN MARTIN  
Transferee, Brunswick, Maine  
Choir 4



NOEMI MAYORGA  
Sec. Arts Club 4



HENRY MEDINA  
Football 3-4; Baseball 2-4; Track 2-4; Basketball "B"  
Team; Lettermans Club, Most Outstand. Baseball Player  
3; All-Dist. Baseball; Nom. Most Athletic 4; Latin Club;  
Prom Com. 3; Annual Staff; Prom Theme Com. 3; Prom  
Banq. Play



THAD MOORE  
Band 2-4; Prom Com 3; Dance Band; Marching Band  
Contest Band, Sec. Arts Beau 4; Nom. Jr Class Favorite  
3;



HENRY MORENO  
Spanish Club 2, 3; Choir 3; Latin Club 4; Industrial Arts  
4; Prom Com. 3



GEORGE MORRILL  
Key Club 2-4; Thespian Play 4; Junior Play 3; One Act  
Plays 2; Spanish Club 3, 4; Prom Committee 3;



JUDY NEAL  
Class Sec'y 2; Trojan Newspaper 2-4, Pub. Mgr. 3;  
Latin Club 2, 3, Corres. Sec'y 2, 3; Served Prom 2; Bi-  
ology Medal 2; Library Cl 2; Nat'l H. S. 2-4; Powder  
Puff Game 3; Typing Medal 3, U. I. L. Contestant,  
Typing Medal 3, U. I. L. Contestant, Typing; FTA 3, 4,  
V. P. 3, Pres. 4; Choir Accomp. 3, 4; Class Ring Com.  
3; Student Council 4, V. P. 4; Sec. Arts Cl. 4, Reporter;  
Delegate to Girls State



RALPH E. NELSON  
D. E. C. A. 3, 4; Sgt. -at-Arms, 3; Industrial Arts Club  
3, 4; Representative, D. E. C. A. State Convention, S. A.



NANCY NEVELS

Transferee from Long Beach, Calif.  
Office 2-4; FHA 3, 4; Pep Club 3, 4; Girls Athletic Club  
3, 4; Youth for Christ Club 3, 4



JOHN NOWLIN

Basketball 3, 4, A Squad 2, B Squad

ARTHUR NUTT

Band 1-4; Stage Band 3, 4; Football Halftime M. C. 4;  
One Act Play 3; Junior Play; Industrial Arts Club 3, 4;  
Fire Monitor 2-4; Junior Fire Dept. 4; Prom Com.  
Christmas Chairman; Industrial Arts 4



MYRA ODOM

FHA 2-4, Junior Chap. Homemakers Degree 3, Second  
Vice Pres. 4; FHA program Chairman 4; Dinner Belle  
Pres. 4; United Fund Chairman 2; Library Club 2-4,  
State Delegate 3, Vice Pres. 4; Spanish Club 3; Prop  
Com. Three-act Plays 3; Office 2-4; FTA, State Degree  
Candidate 4

CLAUDETTE OSWALT

Spanish Club 3, 4; Secretarial Arts Club 4; Junior Play,  
Make-up 3; Annual 3; Prom Decorating Com. 3; Office  
2-4



SALURA OWINGS

Band 2-4; Spanish Club 3, 4; FTA 3, 4; Speaking Choir  
3; FHA 4; Junior Play House Chairman; Secretarial Arts  
Club 4

BARBARA PAULSEN

Latin Club 2 & 4; Trojan Newspaper 4; Junior Play Scen-  
ery; Powder Puff Game 3



HILARIA PEREZ

S. P. Q. R. 3; Prom Decorations 3; Science Club; Choir



MARGARITO PEREZ  
 Lettermans Club; Football 2-4; lettered 3-4; Ind. Arts  
 Club; Track 2



JIMMY POLOZECK (Iron)  
 Class President 4; V-P Jr Class 3; Key Club, V-P; Thes-  
 pians 4; Most Outstanding 4; Library Club Beau 4; Nom,  
 Most Likely to Succeed 4; Student Council; Jr-Sr Prom  
 Com. Chairman



SANDRA PREWITT  
 DE Club



DIETER RALSTON  
 Transferee 4  
 Football 2-3; Basketball 2; Soccer 2-3; NHS 2-3; Letter-  
 mans Club 2-3



ELIZABETH RAMIREZ  
 Spanish Club 3; Prom Com. 3; Intramural Basketball 4



ROSEMARY REAGAN  
 Library Club 2-4, Reporter 4; Trojan 4



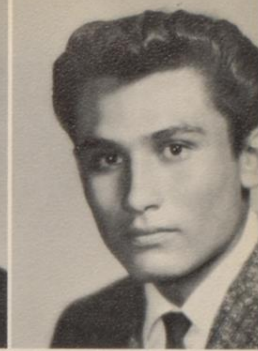
FELIX REYNA  
 Latin Club 3-4; Band 2-4; Choir 3; Prom Com. 3



BEAVER RIDER (Kelley)  
 Football 2-4; Basketball 3-4; Baseball Mgr. 3; Track  
 2-4; Lettermans Club 2-4; Nom. Jr. Fav. 3; Nom. Most  
 Athletic 4; Prom Com. 3; Ind. Arts Club 3; Bonfire Com  
 4;



BEN RODRIGUEZ  
DE Club, V-P; Choir; Rep. DE Club to State Conven.



JUAN RODRIGUEZ  
Football 3; Latin Club

LUPE RODRIGUEZ  
DE Club; Choir; Spanish Club



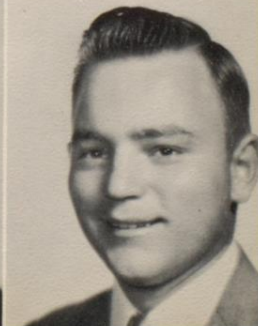
SANTOS RODRIGUEZ (Cumi)  
Sec. Arts Club 4; Prom Com. 3; UF Chair.

RUBEN SALDIVAR  
Latin Club 3-4; Prom Com. 3; Science Club 2



PAUL SANTELLANA  
Lettermans Club; Football Mgr. 3-4; Basketball Mgr 2-4;  
Track Mgr. 2; Latin Club 3

BACLIO SAUCEDA  
Baseball 2-3; Football 2-4, Lettermans Club; Honorable  
Ment. All-Dis. Football 4; Ind. Arts Club



HILMER SCHWIERZKE  
Ind. Arts Club 2-3



GORDON SEARCY (Rod)  
Ag. 1-4, Repor., Greenhand Sec; Shop 4



JANE SEARCY  
Band 2-4; Choir 3-4, Reg. Choir 4; All-Dis. Band 4;  
FHA 2-4; Stage Band 3; Basketball Band 3-4; Scen.  
Jr. Play 3; Cost. Mgr. One-act Play 3; One-Act Cont.  
Play 3; Nom. Band Swtheart 4; Nom. Choir Swtheart  
4; Prom Com.



JIMMY SEARCY  
Ind. Arts Club 2-3; Ag. 3-4; "B" team Football 3; Fire  
Monitor 2-3



FRANCES SINOR  
FHA 3; Class Treas. 3; Most Beautiful 4; FFA Swtheart  
3; Nom. USF Queen 3-4; Nom. Class Fav. 4; Nom.  
Homecom. Queen 4; Chair. -Mum Com. 3; Sec. Arts  
Club, Sec-Treas. 4



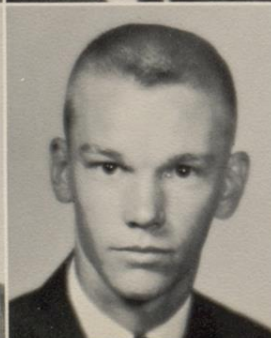
PEDRO SOLIZ  
Science Club 2



TONY SOLIZ  
DE Club, Pres.



EUGENE STEPHENSON  
Band 2-4, Dis. Band 3-4, State Band 3; Choir 2-4,  
Region. Choir 3-4, State 4; Thespians 3-4, Thespian  
Play 4; One-Act Play 3; Junior Play 3; Womanless Wed.  
3; Stg. Man. Cont. Play 3; Bus. Mgr. Band 3; Stu. Dir.  
4; Prom Com. 3; Stg. Band 2-4; German Band 3-4; Bas-  
ketball Band 3-4; Bonfire Com 4; Fire Monitor 2-4; Hon-  
or Award-Buc. Music Festival 3-4



PAUL STEPHENSON  
Band 2-4; Stage Band 3; Key Club 4; German Band 4;  
Ind. Arts Club 4



MICHAEL STURM (Burley)

Football 2-4; Powder-Puff Coach 3; Jr Class Report. 3; Sr Class Sgt-At-Arms 4; Nom. Most Handsome 4; Ag. Greenhand V-P, Chap. Cond. Team 2-4, Grass Judg. Team 2-3, Beef Judge. 2; Jr-Sr Prom Com 3; Bonfire Com. 4

GILBERT SYLVA

DE Club

JANET TAYLOR

Stud. Coun 2-4, Treas 4; FTA 2; Spanish Club 2-3; Sec. Arts Club 4; UF Queen Nom 2-4, UF Princ. 3; Jr Fav 3; Homecom. Prin. 3; Powder-Puff Football 3; Prom Server 2; Basketball Swtheart 3; Cheerlead. 3-4; Office 3-4; Entertain. Com Prom 3; Annual Staff 4; Stud. Coun. Wrkshop 4; Homecom. Queen 4; Nom. Sr. Fav. Most Outstand. Most Beautiful 4; All-School Fav. 4; Who's Who 4

SAM THARP

USF Chair 2; Trojan Staff 2-4; Basketball 2; Tennis 2; Football 3-4; Spanish Club 3; Powder Puff Coach 3; Track 4

JANE TURNER

Nom. Soph. Fav 2; Cheerleader 2-4, Head Cheerlead. 4; Stud. Coun. 2-4, His. 2, Homecom. Chairm. 3, Corr Sec 4; Nom. Homecom Prin 2-4, Homecom Prin. 4; Trojan Staff 2-4, Feat. Ed 4; ILPC 2-4; Key Club Swtheart 2; Stud Coun Wel. Com 2; Class Flow Com 2; UIL Typ. Con 2; Engl. II Award; Nom. USF Queen 2-4; Prom Server 2; Latin Club 2-3; Nom. Jr. Fav; AFS Cand 3; Jr. Play 3; Rep to TA of SC Conv 3; Thespians 3-4, Play-Sound Dir. 4; Nom. Trojan Staff Swtheart 4; Nom. All School Fav. Most Outstand. 4; Whos Who 4; Sec. Arts Club 4; NHS 2-4; Homecom. Prin. 2.

FELIX TIJERINA

Band 2-4

MARY JANE TRIAL

FHA 2-4; Span. Club 3; Sec. Arts Club 4; Prom Com 3; Dinner Belle Club 2-4; Powder Puff Game 3

JUDY TURNER

Pres. Stud. Body 4; Most Outstand Sr. Girl 4; Cheerlead 4; Whos Who 4; Trojan 2-4, Art Ed. 3-4; Nom. Soph. Jr., All Sch. Fav.; Stud Coun 2-4, Parl 3; NHS 2-4, Sec -Treas. 3; Pres. Soph Class Nom. Homecom. Prin 2-3; Nom. USF Queen 2-3; Jr. Play 3; Stud Coun Conv 3; Thespian 3-4; Prom Chair. 3; Cand AFS 3; Latin Club 2-3; Sec. Arts Club 4; Prom Serv. 3; Prom Theme Com 3





LINDA LOU TURNER  
 Band 2-4, Alt. Drum Major 3-4; Band Staff Sec. 3;  
 Band Staff V-P 4, Band Swtheart 4; NHS 2-4; FHA 2-4,  
 3rd V-P, 3, Pres 4; FTA 2-4, Sec 3, Prog Chair 4; Din-  
 ner Belle Club 2-4; Dist. Band 2-3; Reg. Band 2-3; FHA  
 Dist. Parl 4; Band Stud. Coud. 4; Outstanding Homemak.  
 Stud 2



JIMMY TURNIPSEEDE  
 V-P, Soph Class 2; Soph Class Fav. 2; Jr. Class Pres 3;  
 Class Fav 3; St. Stud Coun Conv 2; Stud Coun 3-4; Sr.  
 Class V-P 4; Nom. All-School Fav. Sr. Fav, Most Out-  
 stand., Most Ath; Whos Who 4; Football 2-4, 1st; Foot-  
 ball Capt 4; Basketball 2-4, 1st 3-4; Baseball 2-4; Letter-  
 mans Club, Sec 3; All-Dist Football 4; Prom Server 2



MARY ANN VAUGHAN  
 FTA 2; Sec. Arts Club 4; Speaking Choir; Prom Com 3



CHARLOTTE VANDERSTUCKEN  
 Thesp. Appren 4; Spanish Club 3-4; FHA 3; Powder Puff  
 Football 3; Nom. Most Beautiful 4; Nom. FFA Swtheart  
 3; Ind. Arts Club 3; Prom Server 3; Jr Olympics 3



DANIEL VARGAS  
 Football 2-4; Hon-Mention Tackle; Choir 3-4, A1-  
 Reg. Choir 3-4; Track Mgr 4; Co-Chair. Conces. Stand,  
 Basketball Season.



BOB VANDERHULE  
 Transferee, New Baunsfels 2  
 Football 3-4; Basketball 3-4; FHA Beau 3-4; All-School  
 Fav 4; Whos Who 4; Sportsmanship Award 3; Prom Ser-  
 ver 2; Football Captain 4; Hon. Ment. All-Dist 4; Latin  
 Club 2-4, Treas 4; Trojan Staff 4; Annual Staff 4; Nom.  
 Most Outstand. Sr. Fav. All-School Fav.



ELIAS VILLARREAL  
 Ind. Arts Club 2-4; Prom Com 3; Choir 4; Intramural  
 Football 3; Intramural Volleyball 2



DARLENE WALTER  
 DE Club



SANDRA WARD

Transferred from Kenedy High School  
FTA 4; Secretarial Arts Club 4, Vice-Pres. Office, 4;  
Annual Staff, 4



JOHN WEST

Key Club 2-4, Sec'y 3, 4; Trojan Newspaper 2; Trojan  
Band, 1-3; Annual Staff 2-4, Associate Ed. 3, Editor in  
Chief 4; Prom Decoration Com. 3; Junior Play 3; Prop.;  
Thespian 3-Act Play 4, Thespian 4; Speech Class  
Christmas Play 4; Industrial Arts Club 4; U. I. L. Mech.  
Dr. 4



GEORGE WHITE

Latin Club 4  
(Transferee, Victoria) Basketball 3;

NORMA WHITE

Prom Com. 3; FHA Club 2, Reporter; All Star Volley  
Ball Team 4, 2nd place

KATHRYN WYRICK

FTA 2-4, Ass. Program Chairman 4; Trojan Staff 2, 3;  
Entertainment Com. Prom 2; Library Club 2; Most Out-  
standing Typing Student 2; U. I. L. Typing, 3rd pl.  
Dist 2; Nat'l H. S. 3, 4; Office 3; Dinner Bells 4; FHA  
Club, Reporter 4; Props Com. Jr. Play 3; Prom Decora-  
tions Com. 3; Spanish Cl. 3, 4; Annual Staff 4; Appren-  
tice Thespian 4; Powder Puff Game 3; Jr. Historian,  
Sec. Arts Cl 4 Pres.



HARRIET YOUNTS

FTA 2; FHA 2-4; Library Club 2-4; President 4; Nat'l.  
H. S. 2-4; Served Jr-Sr. Prom; One-Act-Plays 3; Pow-  
der Puff Football 3; Thespians 3, 4; Props Com. Jr. Play;  
Prom Decoration Com 3; Secretarial Arts Club 4; Annual  
Staff 4; Thespian Play 4; Key Club Sweetheart 4; Dinner  
Belles 2-4

MANUEL ZAPATA

Latin Club 2-4; Nat'l H. S. 3, 4; Student Council 3, 4;  
FTA 3, 4 (V.P.) FTA Beau 4; Chairman, Welfare Com.  
4



PAT TAYLOR COFFEY

Library Club, 2, 3; FHA 2, 3, Pres. 3; National Honor  
Society, 4, Spanish Cl 3; Junior Play, Most Outstanding  
Bookkeeping Award, 3



Seniors go a-courtin'



Lantana Duchess



Who said, "A Principal's Life is Easy?"



Skating Queen from Texas



Our School is Co-educational



# seventeen

35

how to be  
a **WOW**  
at sports  
whether you  
**PLAY**  
or  
**WATCH**  
or  
**TALK**  
a good game  
or just **SIT** around  
looking  
**BEAUTIFUL**



J  
U  
N  
I  
O  
R  
S



## JUNIOR CLASS OFFICERS

Top Row: Pat Strickland, President  
Shirley Nowlin, Secretary

Bottom Row: Johnny Nelson, Vice-President  
Reba Youngblood, Treasurer  
Eddie Dunn, Parliamentarian  
Tony Carpenter, Reporter

MOTTO: "Every job big or small,  
We do it well, or not at all."

COLORS: Pink and Silver

FLOWER: Sweetheart Rose

SONG: "Look for the Silver Lining"





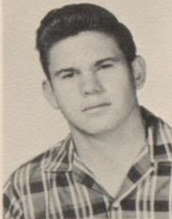
Adelina Adamez  
 Michael Adkins  
 Yvonne Ailshie  
 Luis Alaniz



Jeanette Alexander  
 Tommy Amen  
 Santos Arredondo  
 Robert Berry



Willadean Bess  
 Don Blachly  
 James Blackburn  
 Barbara Blevins



Jerry Bond



Kenneth Booth



Mary Ann Borchers

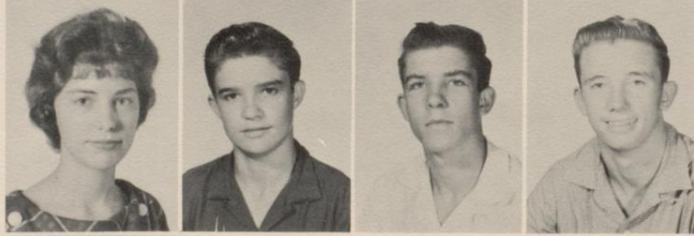
Candido Brionez  
Judy Bowman  
Buddy Brown  
Reyes Camacho



David Carlson  
Tony Carpenter  
Domingo Castillo  
Mary Chesshir



Mary Childers  
Rayburn Coleman  
Hurshall Dickinson  
Monte Dickinson



Dan Douglas



Garvin Downes



Edward Dozier







Eddie Dunn  
Neville Edgar  
Shirley Elsberry  
Richard Espinosa



Joe Fite  
Benny Ford  
Sandra Foster  
Bill Fowler



Gary Gallandat  
Mary Alice Galvan  
Antonia Garcia  
Gerald Garcia



Mary Garcia



Reyes Garcia



Santos Garcia

Mary Ann Geisler  
Mary Louise Gonzales  
Beverly Gray  
Henry Harris



Patsy Henry  
Preston Herbert  
Billie Jean Horton  
Bob Hudson



Mary Jane Hughes  
Bob Humphrey  
Larry Hunter  
Dorothy Johnson



Judy Lawrence



Leo Leal



Caroline Love







Ingrid Maier  
David Marshall  
Jimmy Martinez  
George Matocha



Mary Alice Medina  
Martin Millard  
Sandra Mitchell  
Ernesto Molina



Jay Moore  
Anita Munoz  
Sharon Mussett  
Kaye Neel



Byron Nelson



Johnny Nelson



Carole Nevels

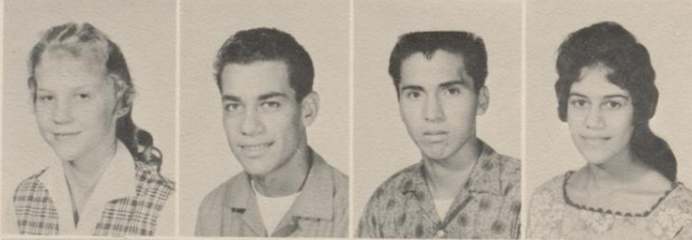
Shirley Nowlin  
Mary Ann Ortega  
Anna Mary Perez  
Erineo Perez



Johnny Perez  
Mary Alice Perez  
Ophelia Perez  
Sylvia Perez



Margaret Peters  
Henry Ramirez  
Lee Ramirez  
Lydia Ramirez



Rudy Ramirez



Richard Reese



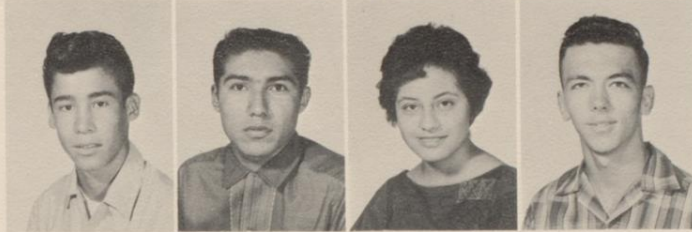
Rose Mary Rendon







Manuel Rincon  
Ann Robinson  
Angelita Rodriguez  
George Rodriguez



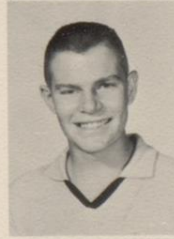
Alex Rosales  
Ovelio Salinas  
Lydia Sanchez  
Joe Sciba



Alice Smith  
Allen Smith  
Margaret Smith  
Judy Stout



Pat Stricklin



Jimmy Tanner



Lupe Trevino

Johnny Turner  
Riley Vega  
Zeke Vera  
Augustin Vidaurri



Pat Wells  
Bobbie Williams  
Joe Wright  
Viola Wright



Walter Wright  
Richard Young  
Reba Youngblood  
Carol Yount



Clemente Aguilar



Aracelia Gonzales



Elfida Ruiz



Pictures not available for  
the following:

Billy Alexander  
Jesus Rodriguez



# WARD

CONGRATULATES

John KENNEDY



upon his election as  
**PRESIDENT**  
We were with you all the way, Jack!



Richard NIXON

upon his election as  
**PRESIDENT**  
We were with you all the way, Dick!

No. 60

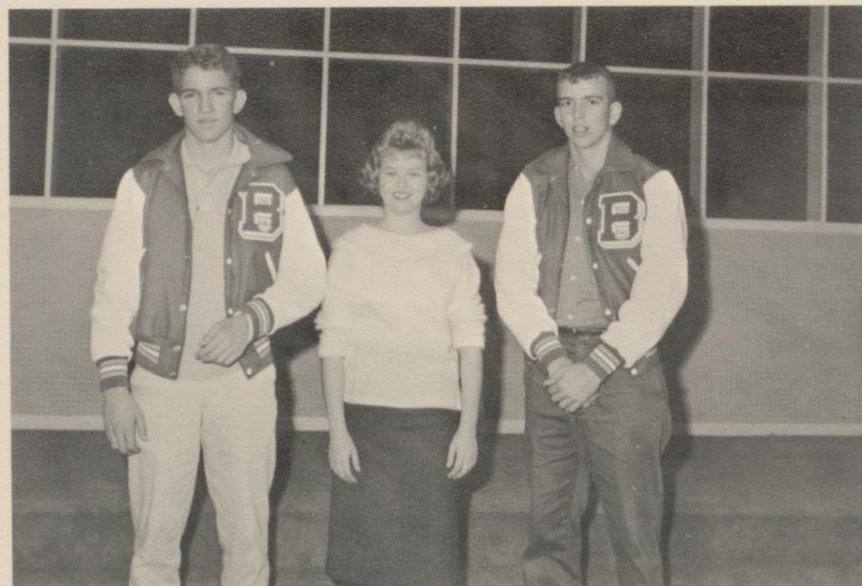
# WARD

and

# WARD

CONGRATULATES

S  
O  
P  
H  
O  
M  
O  
R  
E  
S



## SOPHOMORE CLASS OFFICERS

Paul Spikes - President  
Carol VanderStucken - Secretary-Treasurer  
Sonny Hickman - Vice-President

MOTTO: "Not finished; just begun."

COLORS: Green and Silver

FLOWER: Daffodils

SONG: "I Believe"





Pat Adams  
Refugio Alonzo  
Jorjean Anderson  
Karen Anderson  
Bobby Andrews



Dora Armijo  
Carol Baird  
Joe Baldillez  
Eugene Barrera  
Nelrose Behrens



Clemencia Bentancud  
Gary Goenig



Madeline Boufford  
Benito Bridge



Carrell Briscoe  
Velma Brockman



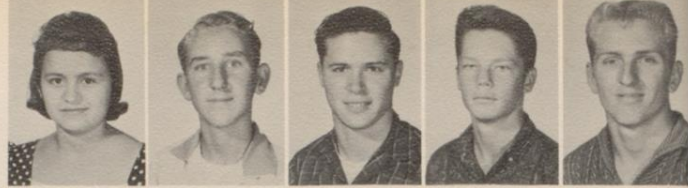
Carole Brown  
Sandy Caffall  
R. C. Callis  
Baldemar Camacho  
Beatrice Cantu



Mary Alice Cantu  
Irene Castillo  
Juanita Castillo  
Mary Helen Chamberlain  
Gary Chatham



Isabel Chavez  
 Adam Cooley  
 Bobby Cooper  
 Bob Crockett  
 Robert Dallas



Darleen Davis  
 Fred Davis  
 Javier DeAnda  
 Margaret DeBouver  
 Jean D'Heilly



Donald Denton  
 James Dieckow



Mike Dillingham  
 Sandy Dohl



Kathy Dolan  
 Patsy Donoho



Mary Douglas  
 Robert Douglas  
 Sally Duckworth  
 Helen Dugat  
 Glenn Dunn



Robbie Dunn  
 James Eason  
 Sarah Jane Ennis  
 Sabra Ann Everett  
 Julius Farris







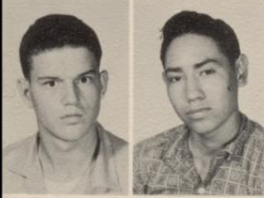
Becky Fey  
Joe Frank Flores  
Jo Ethel Fuentes  
Wendell Fuqua  
Gayla Gandy



Abel Garcia  
Alfredo Garcia  
Consuelo Garcia  
Dolores Garcia  
Mary A. Garcia



Gloria Garza  
Ricky Glenzer



James Glick  
Daniel Gomez



Lupe Gomez  
Paul Gonzales



Ronald Gordon  
Jo Lynn Gough  
Marion Greco  
Ellis Greer  
Joseph Greer



Elizabeth Grove  
Petra Guerrero  
Robert Guerrero  
Ysaías Guerrero  
Mary Ellen Handy

Ellis Harrison  
 Pat Hecke  
 Jane Hector  
 Martha Helvenston  
 Joe Hernandez



Bill Herrmann  
 Bill Hester  
 Sonny Hickman  
 Wanda Higgins  
 Belinda Hogan



Glen Hogan  
 Joyce Holt



Carl Holubec  
 Robert Huddler



Clarence Huegler  
 Linda Hughes



Crayton Hunter  
 Dick Huser  
 Billy Imes  
 Carol Jackson  
 Helen Jackson



Walton Johnson  
 Helen Juenger  
 Johnnie Mae Kay  
 Dianna Kenny  
 Susan Keyser







Lou Joyce Kopplin  
Darlene Lawrence  
Darlynn Leishman  
Rhea Linney  
Dawn Looker



Jesus Lopez  
Faye Love  
Mary Elizabeth Loya  
Sammie Lozano  
Dottie McCameron



Claudia McCarty  
Ralph McCraig



Carolyn McGuill  
Daniel McGuill



Hollis McKinney  
Richard McLeod



Shirley McMahan  
James McMurrey  
Tom McPherson  
James Martin  
Joe Martinez



Susan May  
Arnold Medina  
Martha Medina  
Mike Medlin  
Mary Helen Mendoza

Michael Millard  
Henry Mitchell  
Bill Mock  
Richard Moore  
Ronnie Moore



Felipita Moreno  
Freddy Moya  
Margaret Ann Mulkey  
Lupe Munoz  
Ortencia Naranjo



Mary Beth Nelson  
Bobbie Null



Buddy Odom  
Joe Orchard



Frank Ortiz  
Alicia Palacios



Dan Pantoja  
Brian Payne  
Gene Payne  
Avelia Perez  
Ofelia Perez



Rosita Perez  
Kathy Peterman  
Lonnie Pittman  
Charles Pogue  
Linda Pollan







Frances Quillin  
Joe Ramirez  
Rosa Ramirez  
Alicia Ramos  
Arnold Ratchford



Johnny Reagan  
Johnny Rider  
Judy Rider  
Blanche Rodriguez  
Geronimo Rodriguez



Erasmo Rojas  
Clifton Rowland



Ann Roy  
Henry Roy



Pete Saldivar  
Sylvia Sanchez



Albert Schoneberger  
Nedra Schott  
Albert Segovia  
Bill Senseman  
Bill Shaw



Suzie Shepardson  
David Silva  
Joyce Sinor  
Cindy Slay  
Carolyn Smith



James Smith  
Nadine Smith  
Julie Sparks  
Paul Spikes  
Mac Spellmann



Don Sproles  
Barbara Stephenson  
Joyce Stover  
Edmond Stempel  
Ottis Sumrall



Jimmy Swift  
Ida Ruth Sylva



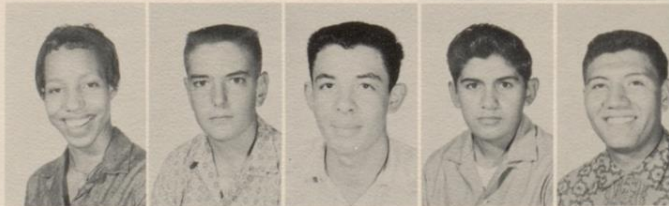
Pat Taft  
Kathy Taylor



Lola Techaira  
Philip Terry



O'Dean Thomas  
Chipper Tolliver  
Marcos B. Torres  
Domingo Trevino  
Manuel Trevino



C. B. Trial  
Patsy Tumipseede  
Pamela Tuttle  
Jack Underwood  
David Valdez







Pete Valdez  
Severo Valdez  
Allen Van Allen  
Carol VanderStucken  
Manuel Vasquez



Ruby Lee Vaughn  
Martha Vela  
Antonio Villarreal  
Jesse Rene Villarreal  
Ray Villarreal



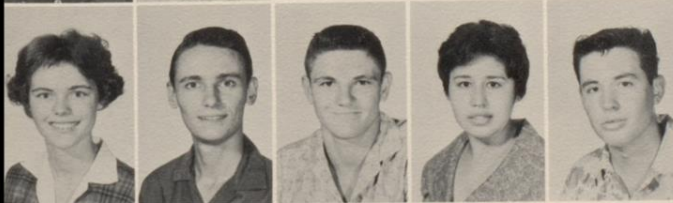
Mary Jo Wagner  
Gene Walter



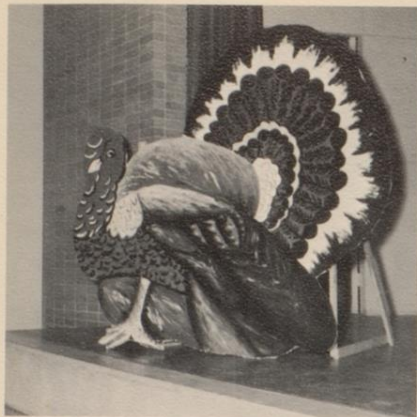
Dusty West  
Gay Wilson



Michael Wooten  
Mack Workman



Connie Wrinkle  
Wayne Young  
Freddie Zander  
Mary Jane Buenevastro  
Neal Thurmond



"We Give Thanks"



"We Dreamed We Were Cheerleaders in Our - - - "



Any resemblance to persons living or dead is purely coincidental



Tri-County Judging



On rearing children from crib to college

# Parents'

OCTOBER 1  
OVER 1,800,000 CIRC  
40¢

MAGAZINE

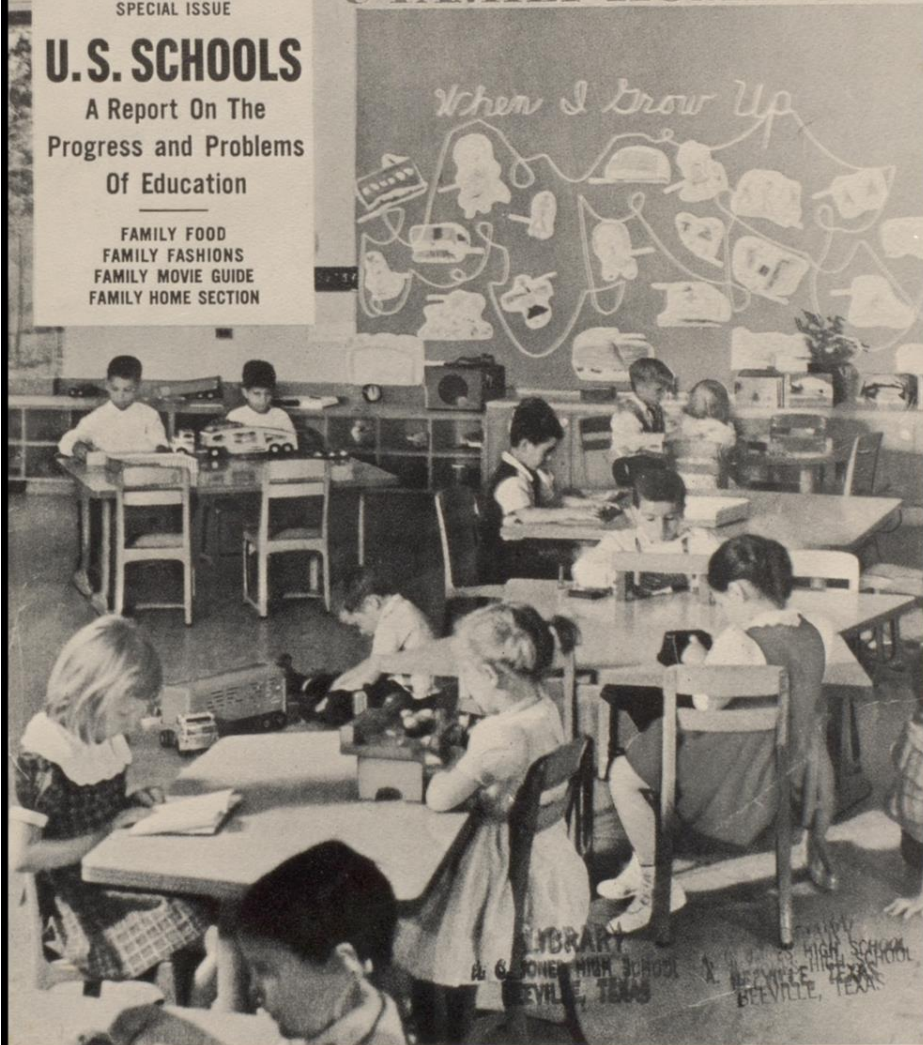
& FAMILY HOME GUIDE

SPECIAL ISSUE

## U.S. SCHOOLS

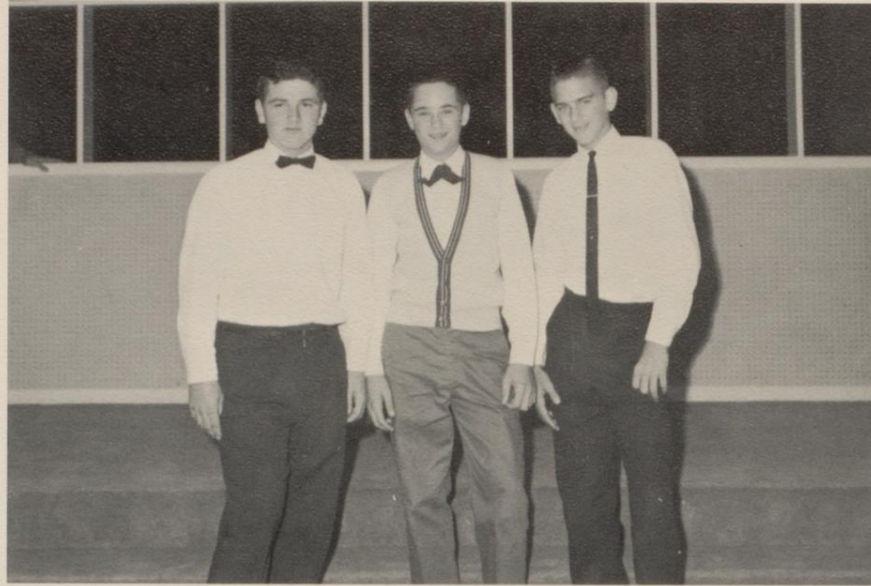
A Report On The  
Progress and Problems  
Of Education

FAMILY FOOD  
FAMILY FASHIONS  
FAMILY MOVIE GUIDE  
FAMILY HOME SECTION



F  
R  
E  
S  
H  
M  
E  
N

LIBRARY  
R. G. POWELL HIGH SCHOOL  
BEEVILLE, TEXAS  
BEEVILLE HIGH SCHOOL  
BEEVILLE, TEXAS



## FRESHMEN CLASS OFFICERS

Richard Zander - Vice-President  
Jody Council - President  
Bobby Routh - Secretary-Treasurer

MOTTO: "He who looks ahead never falls behind."

COLORS: Violet & Silver

FLOWER: Mum

SONG: "You'll never walk alone"





Becky Aguilar  
Mary Ann Alexander  
Lorenza Almaraz  
Jimmy Aman  
Robert Aman  
Suzette Archambault



Salvador Andrade  
Arturo Arguijo  
Seferino Armijo  
Rudy Arredondo  
Charles Austen  
James Baird



Paulette Baker  
Richard Baltazar  
Pete Barrera  
Marilyn Batchelor  
W. C. Bates  
Paulette Bauer



Frances Baylor  
Peggy Beasley  
Mary Ann Bell  
Adela Benavidez  
Suellen Bennett  
Richard Bernsen



Gloria Berthold  
John Bevil  
Fay Blackburn  
Kay Blackburn  
Rudy Blakely  
Donald Blanchard



Carolyn  
Blevins



Ernest Boemer  
Robert Bohmfalk  
Anne Bowen  
Nona Brinkoeter  
Isacc Brionez  
Lynda Broadway



Bill Browning  
Donald Buffkin  
Teodoro Camacho  
Edward Canada  
Ray Cano  
Polito Cantu, Jr.



Teresa Carrizales  
Delia Casarez  
Isa Casarez  
Ramiro Casarez  
Frank Castro  
Jody Council



Evelyn Crowe  
Kay Cude  
Elena Cuellar  
Zelma Davis  
Bart De La Cruz  
Beatrice Delgado



Mary Jane Delgado  
Bobby Denning  
Clydene Dennis  
Larry Denson  
Elizabeth Denton  
Ronald Denton



Dennis  
Dewitt







Ina Ray De Russe  
 Patti Dillingham  
 Ymeldo Dominquez  
 Mary Beth Doubrava  
 Sidney Dugat  
 Buford Eeds



Paulette Elliott  
 Raymond Eissler  
 Sharon Ellsworth  
 Gilbert Estrada  
 Ronald Evans  
 Gail Falkowski



Adelfa Farias  
 Nancy Finn  
 Doris Fitzgerald  
 Manuel Flores  
 Jane Fox  
 Jo Ann Garcia



Mike Garcia  
 Norberto Garcia  
 Rosendo Garcia  
 Nicky Garnett  
 Lillie Esther Garza  
 Margaret Gilliam



Jesus Gomez  
 Juan Gonzales  
 Pete Gonzales  
 Dianne Gotthardt  
 Mary Gloria Govella  
 Carlos Guerrero



Esther  
 Guerrero



Jean Hall  
 Dick Hancock  
 Juanita Hancock  
 Sharon Hatcher  
 Kathleen Heldenfels  
 Sara Hernandez



Jimmy Higgs  
 Wanda Jean Holt  
 Susan Homewood  
 Cheryl Houlihan  
 Esther Huddler  
 Larry Huegler



Margaret Humphrey  
 Mary Ellen Humphrey  
 Kay Huser  
 Nancy Jostes  
 Nana Kelley  
 Jimmy King



Larry Koenig  
 Dickie Laughter  
 Paddy LeBourveau  
 Jorge Longoria  
 Rudy Longoria  
 Joe Henry Lopez



Lupita V. Lopez  
 Tom Lopez  
 Bobby Lothringer  
 Kay Love  
 Virginia Loya  
 Andres Lozano



John  
 McClendon





Ronnie McCraig  
Bob McLeod  
John McMahan  
Wylie McMahan  
Mary McMillan  
Pepper Mabray



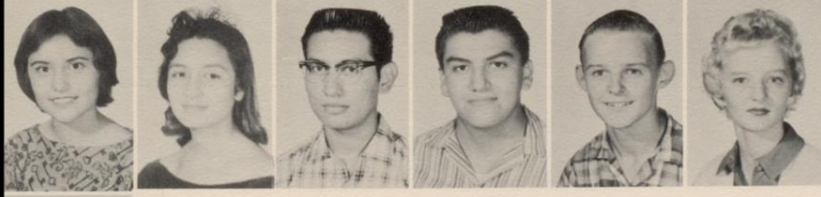
Johnny Madrigal  
Arturo Maldonado  
Frank Maldonado  
Jesus Maldonado  
Manuel Maldonado  
Mary Maldonado



Alex Marshall  
Eileen Martin  
Joe Martinez  
Mary Alice Martinez  
Vilma Martinez  
Mack Massengale



Felipe Mendoza  
James Mericle  
Rose Marie Mitchell  
Kenneth Minnitti  
Evangelina Molina  
Joe Montez



Lupita Moreno  
Mary Alice Muniz  
John Munoz  
Robert Munoz  
Larry Nevels  
Nancy Newson



Frances  
Oatman



Kenneth Odenwelder  
 Adelaida Ortiz  
 Jimmy Owings  
 Pamela Palmer  
 Aurora Pantoja  
 Robert Parker



Phillip Parsons  
 Billy Tom Payne  
 Abelardo Perez  
 Bertha Perez  
 Pauline Perez  
 Jeanne Perkins



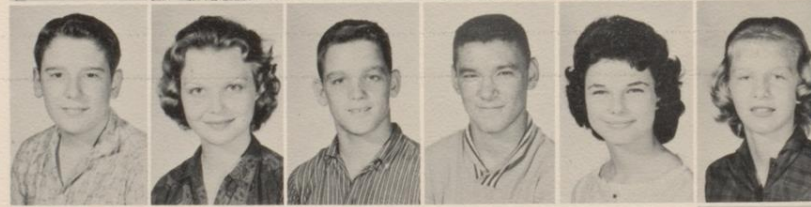
Howard Peters  
 Tom H. Phillips  
 Carroll Prewitt  
 Ann Pullin  
 Mary Diana Ramirez  
 Mary Rangel



Carolyn Reagan  
 Mike Reagan  
 Duane Reeves  
 Mary Rendon  
 Tony Rendon  
 Ramiro Reyna



Joseph Richards  
 Jackie Rider  
 Timmy Rider  
 Eloy Rodriguez  
 Trudy Rose  
 Mary Rosen



Allen  
 Rothlisberger







Richard Rothisberger  
 Bobby Routh  
 Judy Rowland  
 Freddy Ruiz  
 Victor Salazar  
 Pedro Salinas



Jimmy Sanders  
 Donald Searcy  
 Essie Smith  
 Tony Soliz  
 Linda Sostre  
 Paula Spangenberg



John Spikes  
 Egan Stedman  
 Jerry Stephenson  
 Jackie Stout  
 Mary Jo Sturm  
 James Summers



Jesusa Tapia  
 Franklin Taylor  
 Reynolds Tharp  
 Joe Trevino  
 Clark Trlica  
 Bill Truxaw



Bob Turner  
 Janet Underwood  
 Johnny Vela  
 J. R. Vickery  
 Dolores Vidaurri  
 Michael Walker



Mike  
 Walker



James Williams  
Raleigh Williams  
Donald Wilson  
Kirk Wilson  
Buddy Wilson  
David Wolfe



Shirley Wright  
Rabb Wyatt  
Sharon Yoakum  
Kathy Young  
Annette Younts  
Alfredo Yzaguirre



Richard Zander  
James Zimmer  
Natividad Guerrero  
Elias Gutierrez  
David Brionez



Pictures not available for the following:

Casildo Arredondo  
Jacinto Garcia  
Ysabel Garza  
Augustin Gomez  
Mary Louise Gonzales  
Lydia Sanchez  
Ruben Sylva  
Lupe Velasquez  
Carol Boyd





# VOGUE

V. 15

r  
essories  
hake  
ion  
of  
hes

sensational  
jewel fakes—  
ear and to give

beauty repairs;  
k-change coiffure

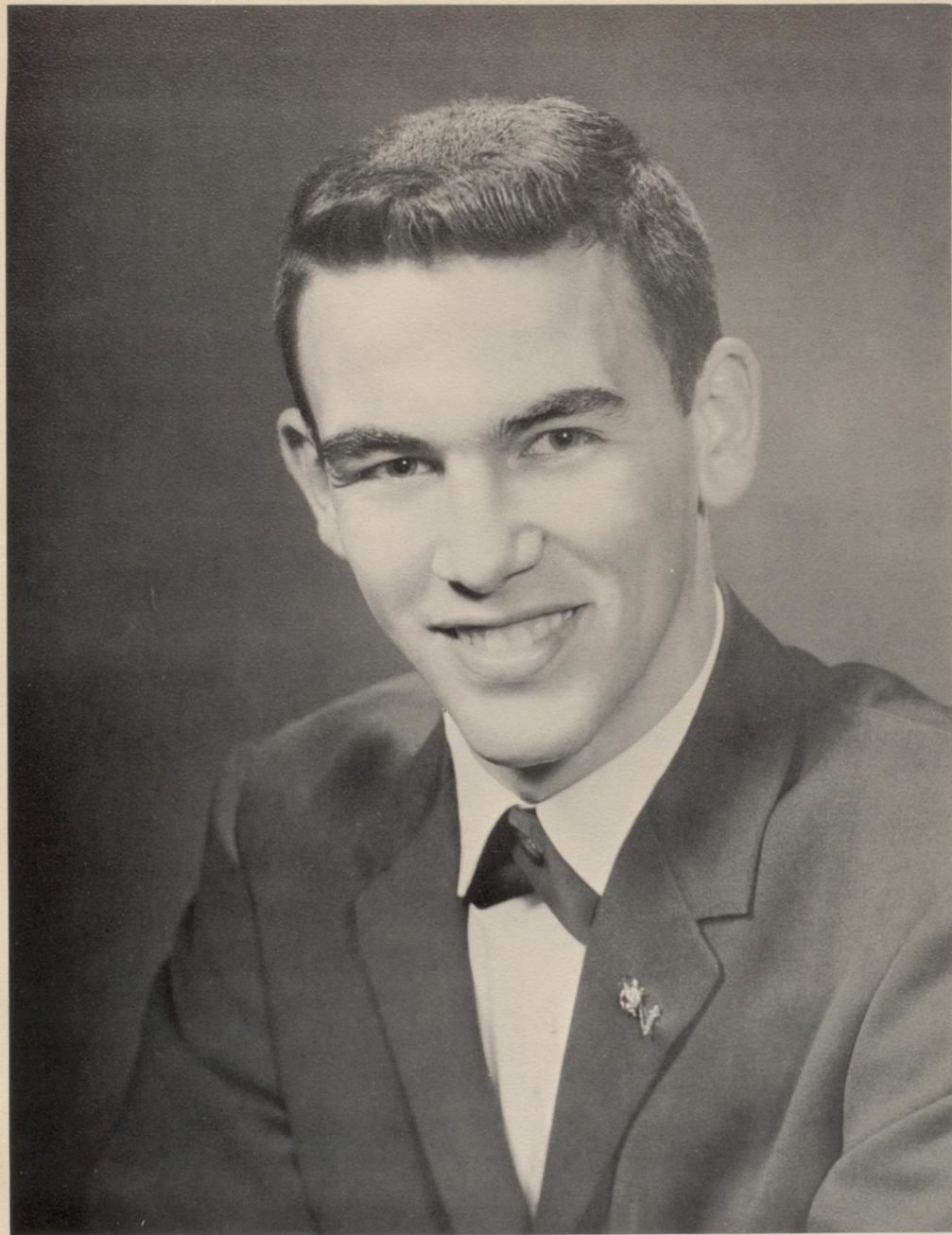
ainbocher 4-point clothes-plan



F  
A  
V  
O  
R  
I  
T  
E  
S

LIBRARY

AT JONES HIGH SCHOOL

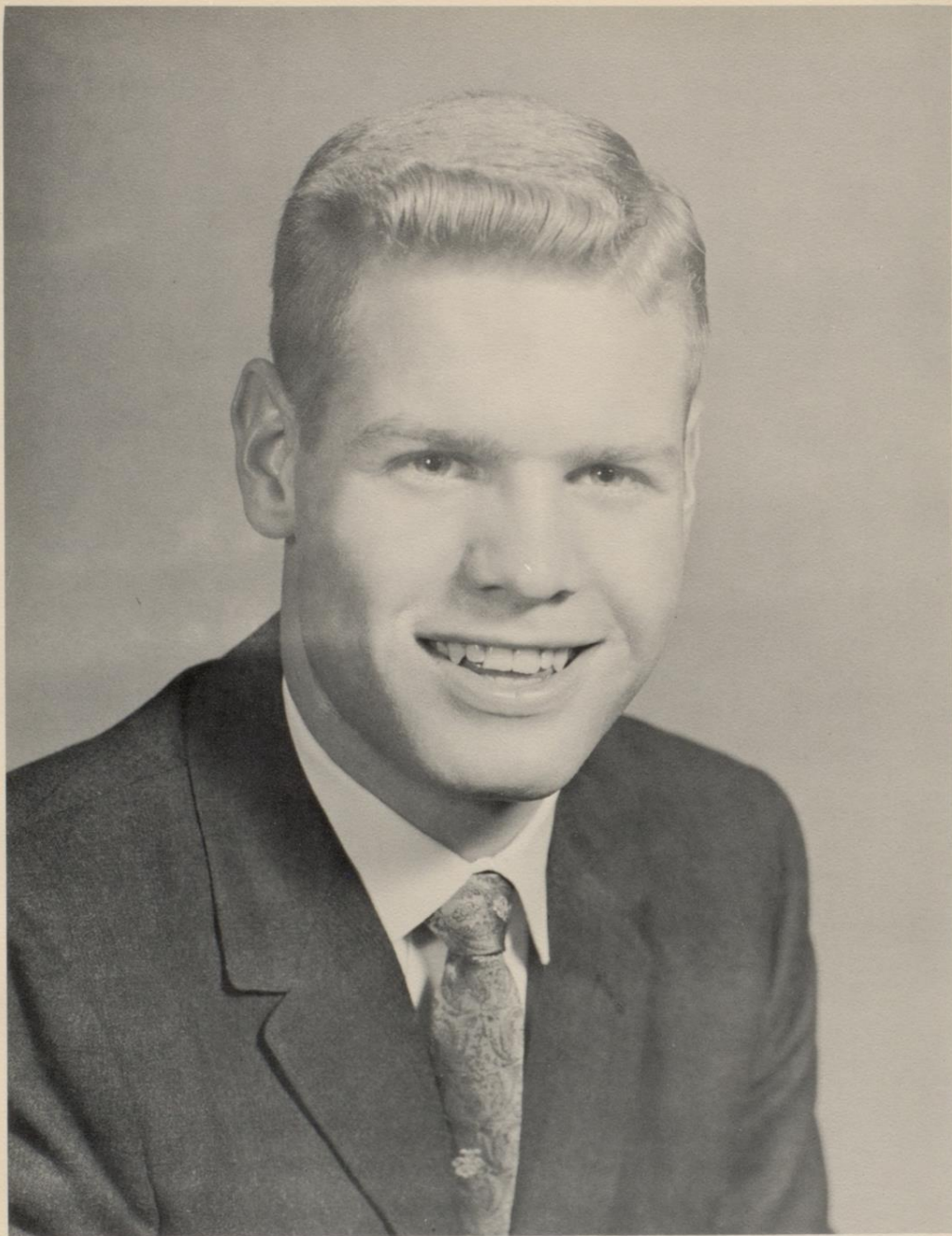


ALL-SCHOOL FAVORITE Bob Vanderhule





ALL-SCHOOL FAVORITE Janet Taylor

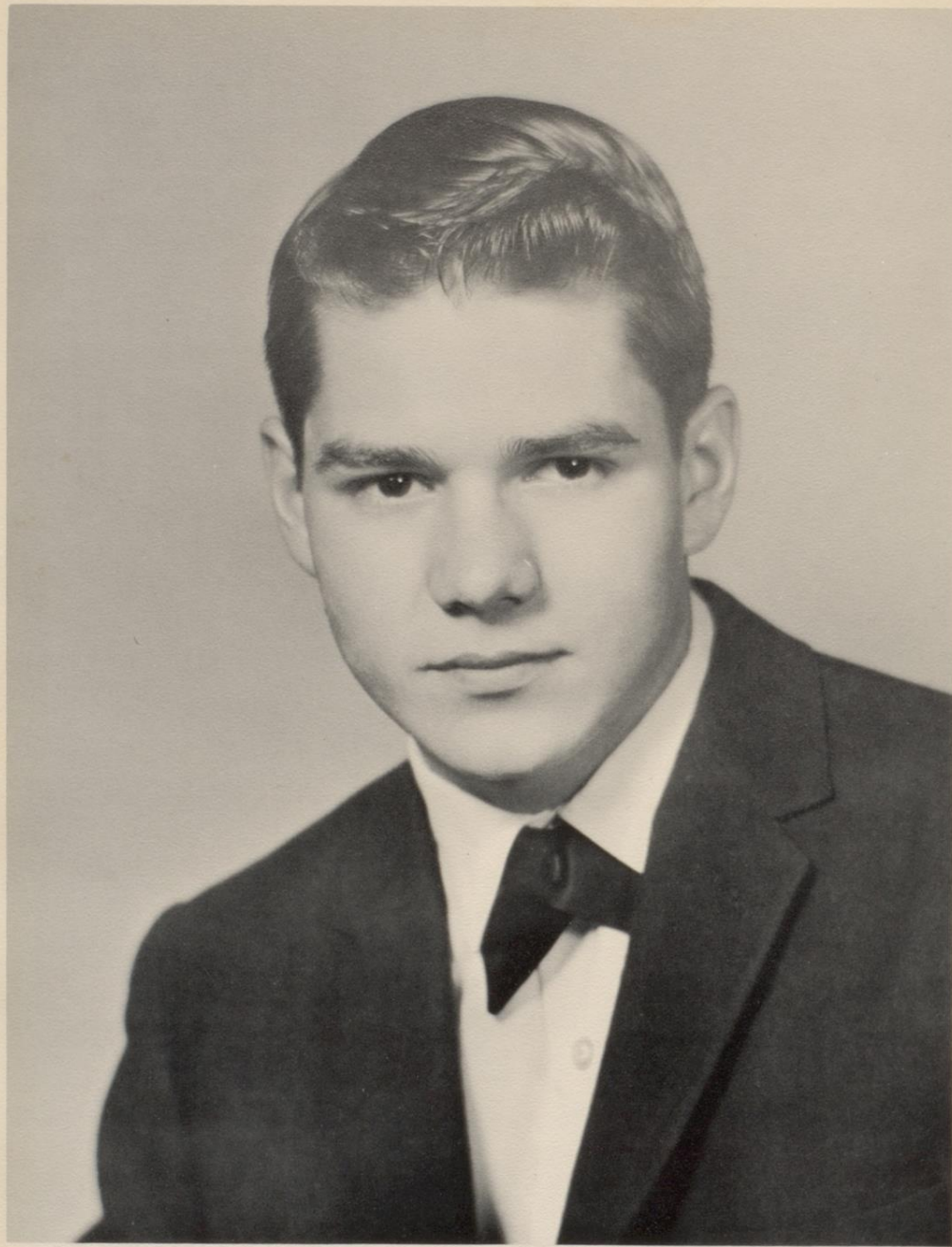


SENIOR FAVORITE Bob Clark





SENIOR FAVORITE Phyllis McGill

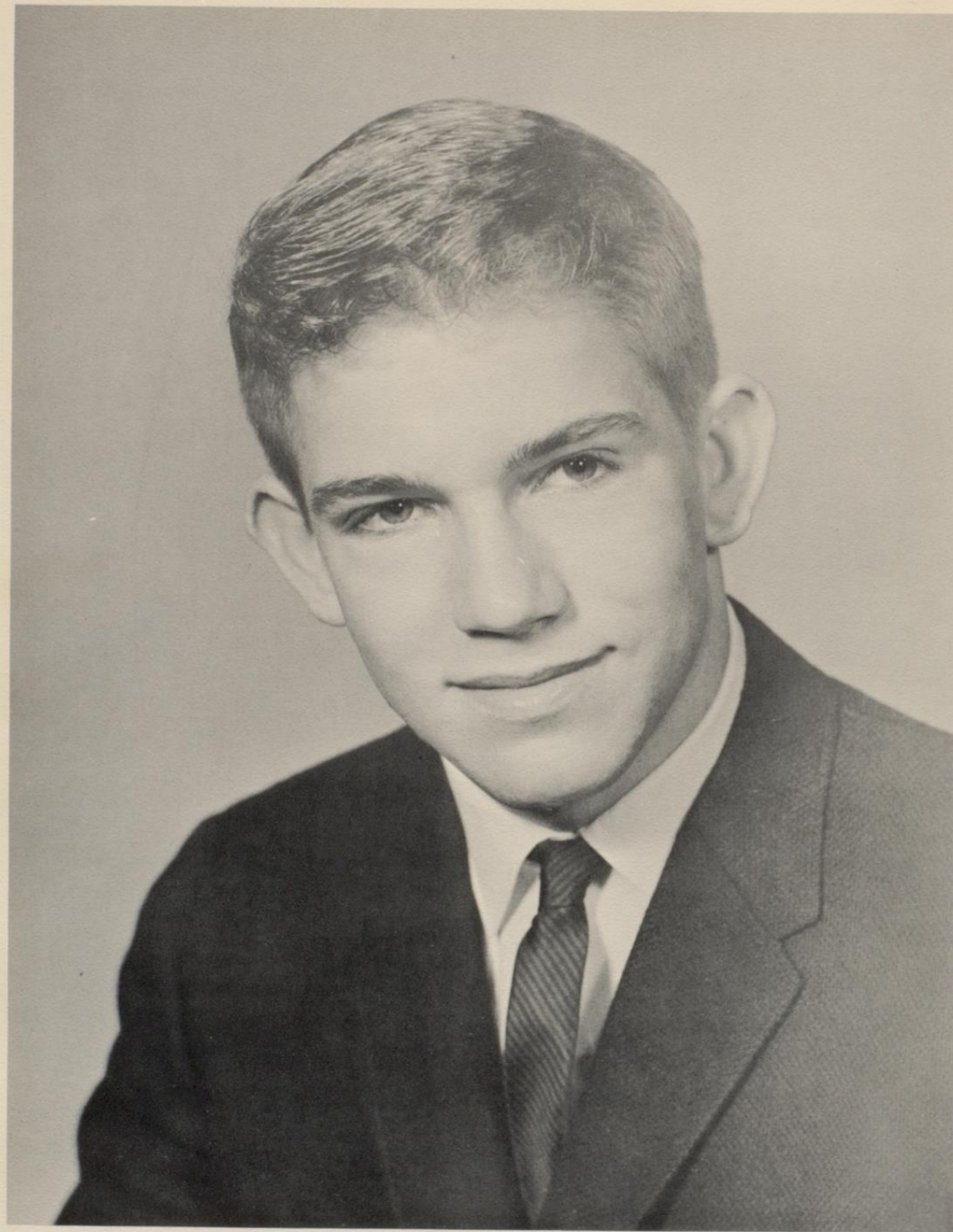


JUNIOR FAVORITE Eddie Dunn





JUNIOR FAVORITE Sharon Mussett

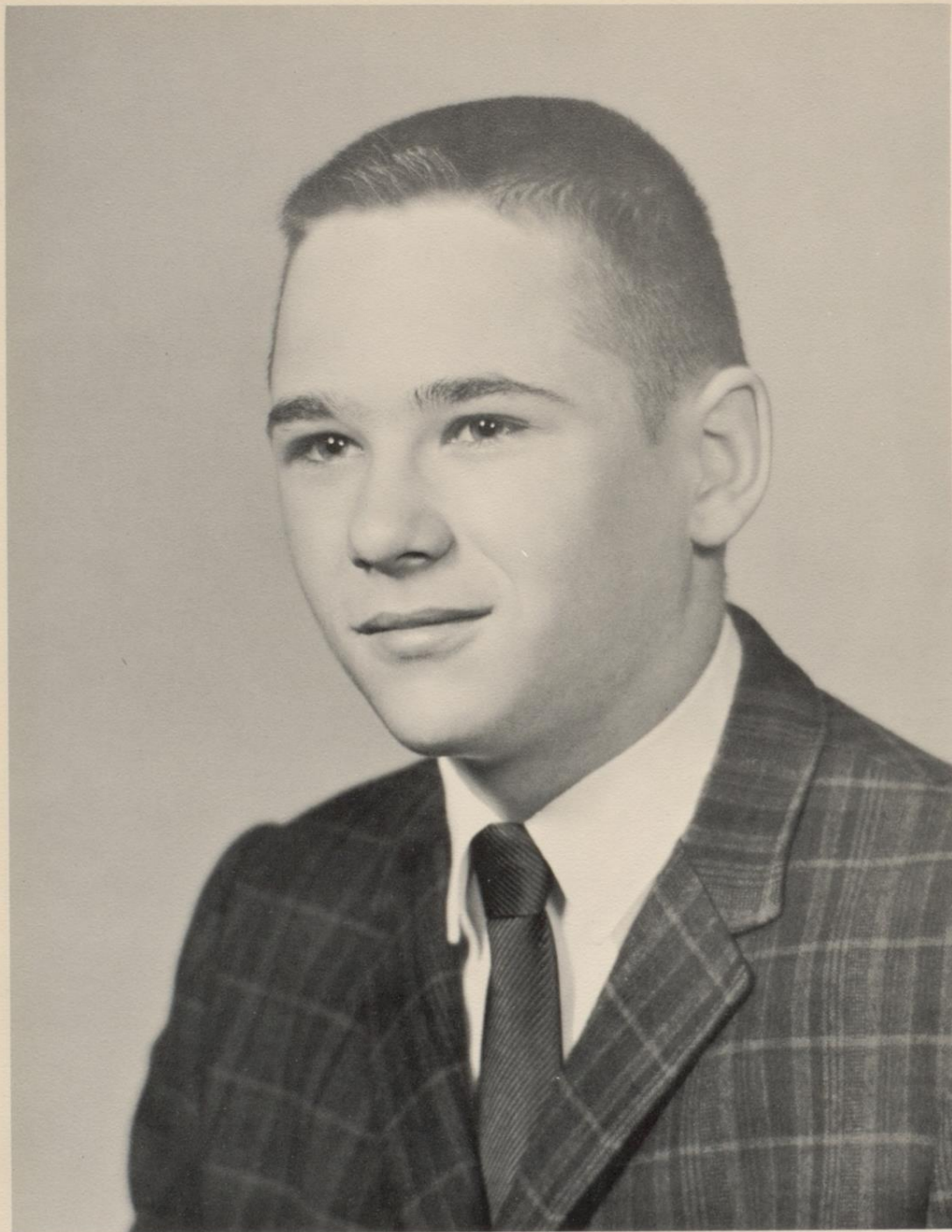


SOPHOMORE FAVORITE Paul Spikes





SOPHOMORE FAVORITE Elizabeth Grove



FRESHMAN FAVORITE Jody Council





FRESHMAN FAVORITE Nona Clay Brinkoeter

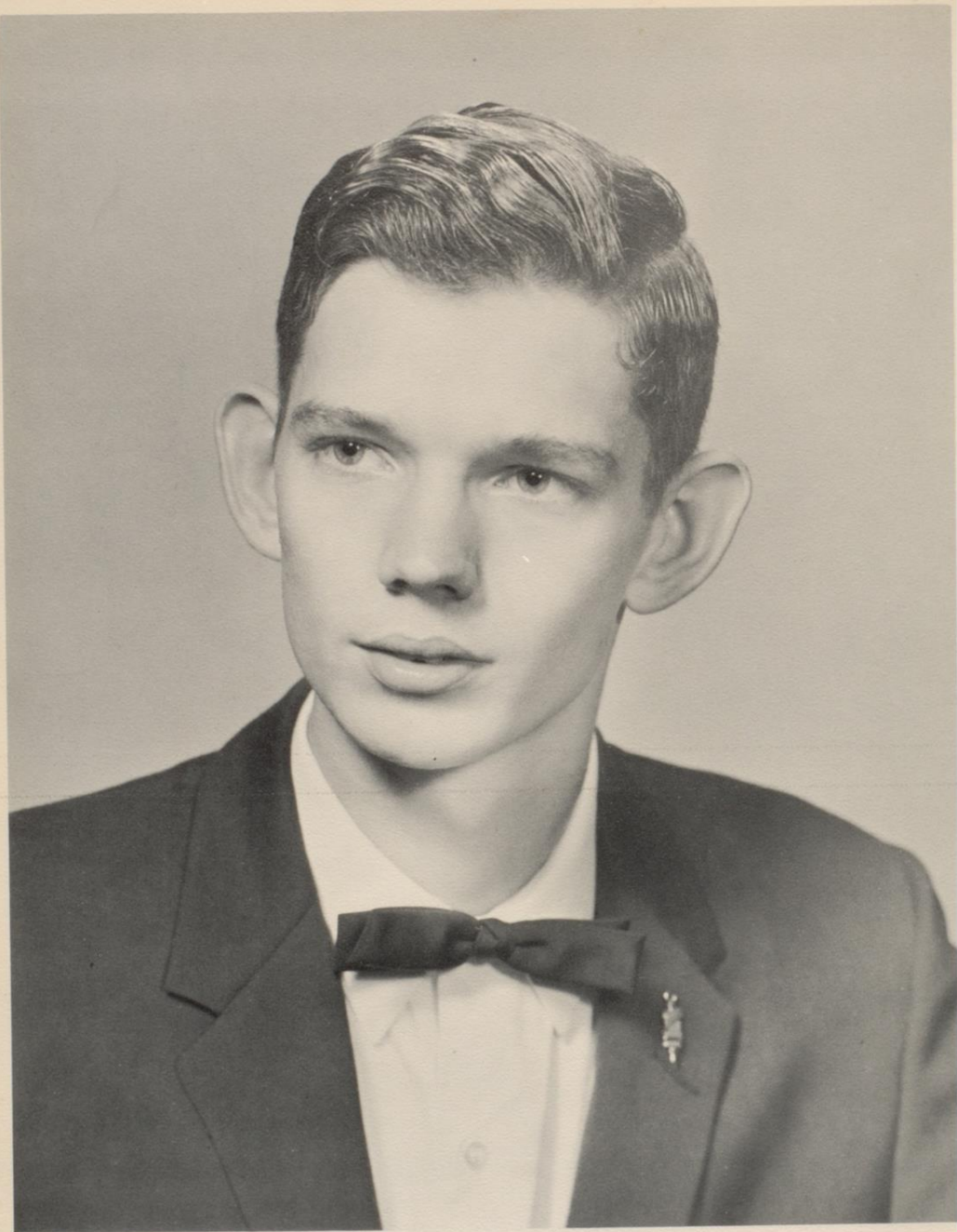


MOST OUTSTANDING SENIOR BOY Jimmy Polozek





MOST OUTSTANDING SENIOR GIRL Judy Turner



MOST LIKELY TO SUCCEED SENIOR BOY Aubrey Martin





MOST LIKELY TO SUCCEED SENIOR GIRL Nancy Lawson

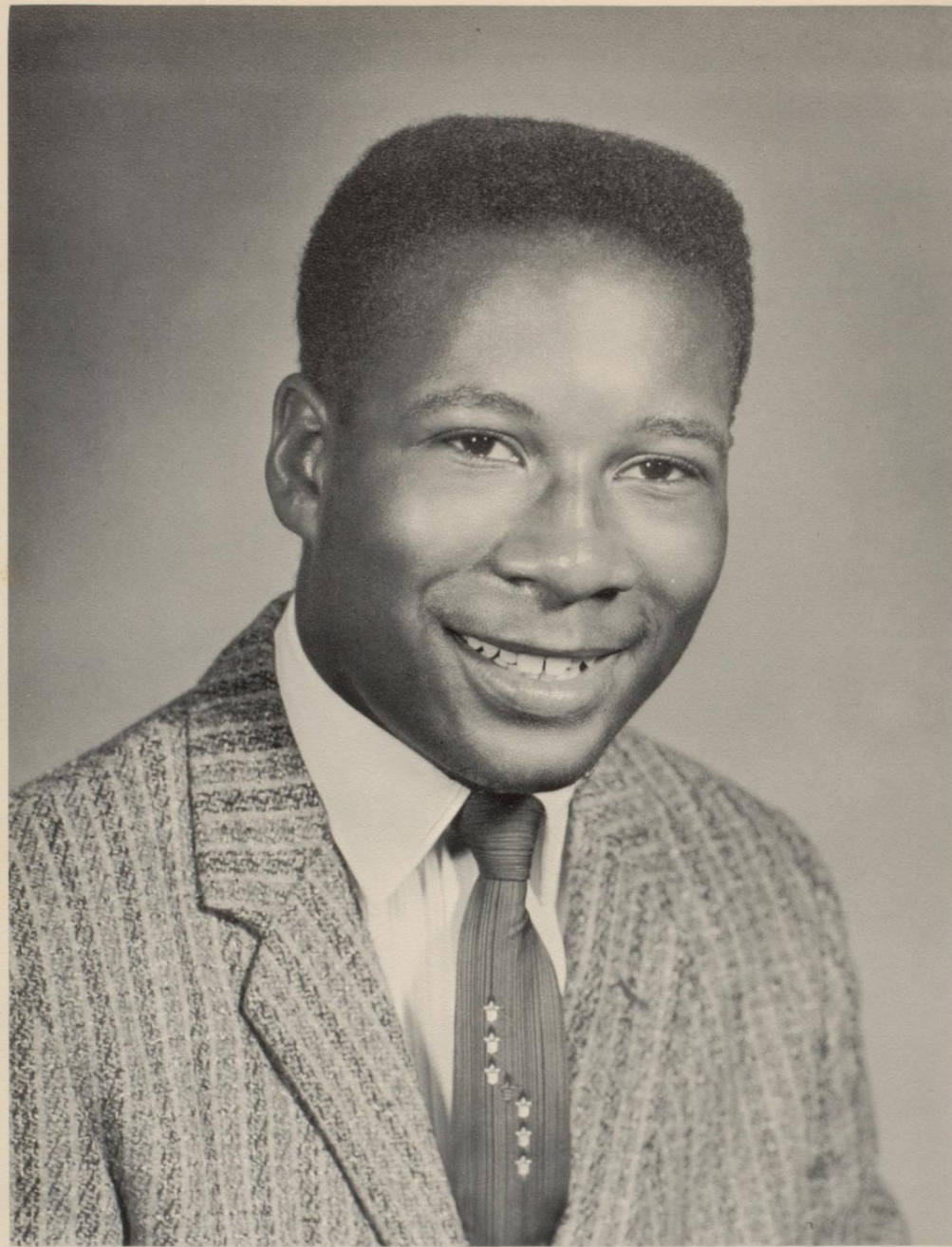


MOST HANDSOME SENIOR BOY George Brin





MOST BEAUTIFUL SENIOR GIRL Frances Sinor



MOST POPULAR SENIOR ATHLETE Kenneth Hinderman





## FAVORITE NOMINEES

Sitting: Frances Sinor; Judy Stout; Mary Jane Hughes; Sharon Mussett; Nancy Lawson; Claudia McCarty; Judy Turner. Second Row: Nona Brinkoeter; Carol VanderStrucken; Charlotte VanderStrucken; Mary Louise Everett; Janet Taylor; Mack Workman; Elizabeth Grove; Jane Turner; Sarah Kay Handy; Phyllis McGuili; Bob Clark. Third Row: Paul Spikes; Jackie Stout; Juanita Hancock; Lupe Trevino; Henry Medina; Larry Hunter; Eddie Dunn; Jody Council; Rudy Blakely. Top Row: Sonny Hickman; Jimmy Jackson; George Brin; Mike Sturm; Jimmy Polozock; Beaver Rider; Bob Vanderhule; Kenneth Hinderman; Jimmy Tumipseede; Aubrey Martin.

# WHO'S WHO



Left to Right: Manuel Zapata; Nancy Lawson; Janet Taylor; Judy Turner; Jane Turner; Bob Vanderhule; Jimmy Turnipseede; Mary Louise Everett; Sarah Kay Handy; and Betty Caffall.



Betty Lynn Caffall



Sarah Kay Handy



# WHO'S WHO



Mary Louise Everett



Jimmy Turnipseede



Bob Vanderhule



Jane Turner

# WHO'S WHO



Judy Turner



Janet Taylor



Nancy Lawson



Manuel Zapata





A  
C  
T  
I  
V  
I  
T  
I  
E  
S

HAPPY 100TH  
BIRTHDAY,  
GRANDMA MOS

SEPTEMBER 19, 196

E. F. DOUGHERTY  
202 E. HUNTINGTON  
REDFIELD TEX  
60 52500 42 0405 0202



First Place Winner, Dorothy Baltazar



Runner-up, Johnny Bell



Cheerleaders ride in style



Tony Carpenter's Entry



Oh, Sky Gods, send us Rain!



Majorettes, on Stage





It's All in Fund-- The United Fund, that is.



Second from Right, Mary Ellen Humphrey, United School Fund Queen.



## OUR FAVORITES



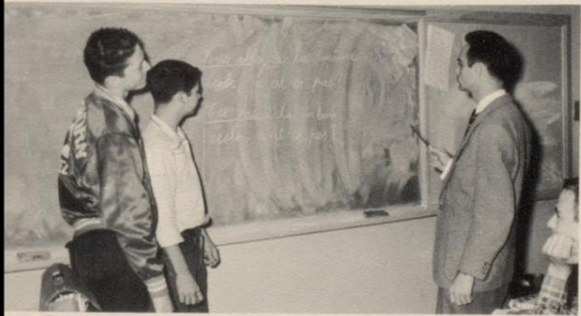
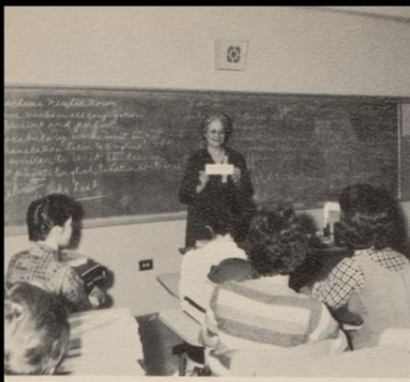


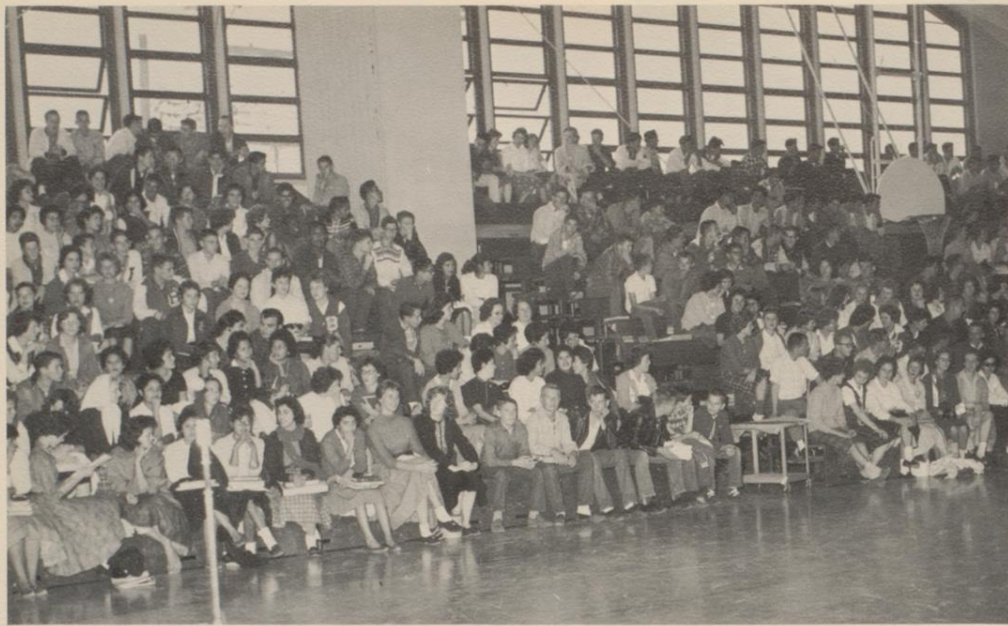
# ANNUAL DANCE













# "OUR TOWN"

by Thornton Wilder





# OFFICE

## FIRST PERIOD

Left to Right: Becky Fey, Stanley Anderson, Darlene Lawrence, Myra Odom, Phyllis McGill, Nancy Nevels

## SECOND PERIOD

Left to Right: Shirley Wright, Barbara Burns, Jackie Oswald



## THIRD PERIOD

Left to Right: Carole Nevels, Nelrose Behrens, Kay Huser, Jackie Stout, Kathryn Wyrick, Janet Taylor, Mary Helen Castillo, Mary Louise Everett, Anita Munoz



# STAFF

## FOURTH PERIOD

Left to Right: Mary Jo Wagner, Connie Winkle,  
Jane Searcy, Frances Baylor, Ruth Austen, Patsy  
Henry, Judy Stout



## FIFTH PERIOD

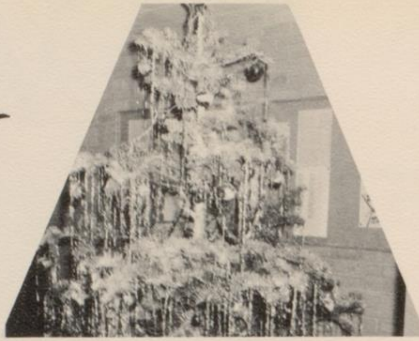
Left to Right: Betty Koenig, Gayla Gandy, San-  
dra Ward, Shirley Nowlin, Marion Greco

## SIXTH PERIOD

Left to Right: Paulette Bauer, Viola Wright,  
Julie Sparks, Nancy Lawson, Carole Brown, Sa-  
lura Owings



C  
H  
R  
I  
S  
T  
M  
A  
S



at

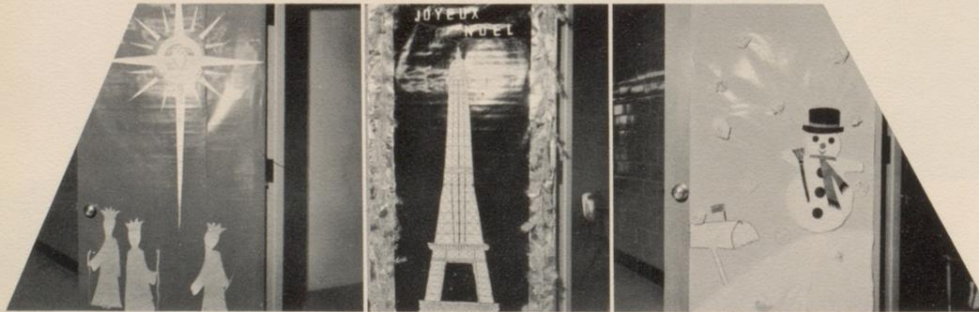
J.  
H.  
S.

Student Council's Tree



Mrs. Pfeil's First Place

Secretarial Arts Second Place



Mrs. Olsen's Latin Class Entry

Mr. Landry's Decor

Mr. Batchelor's Contribution





# HOMECOMING COURT



Left to Right: Kathy Young, Freshman Princess; Jane Turner, Senior Princess; Janet Taylor, Homecoming Queen; Mary Jane Hughes, Junior Princess; Judy Stout, Junior Princess; and Elizabeth Grove, Sophomore Princess.



Homecoming Queen Janet Taylor and escort, Jimmy Polozek.



Esther Wright, Homecoming Queen, 1959-60; Jane Turner, Senior Princess, and escort Thad Moore.



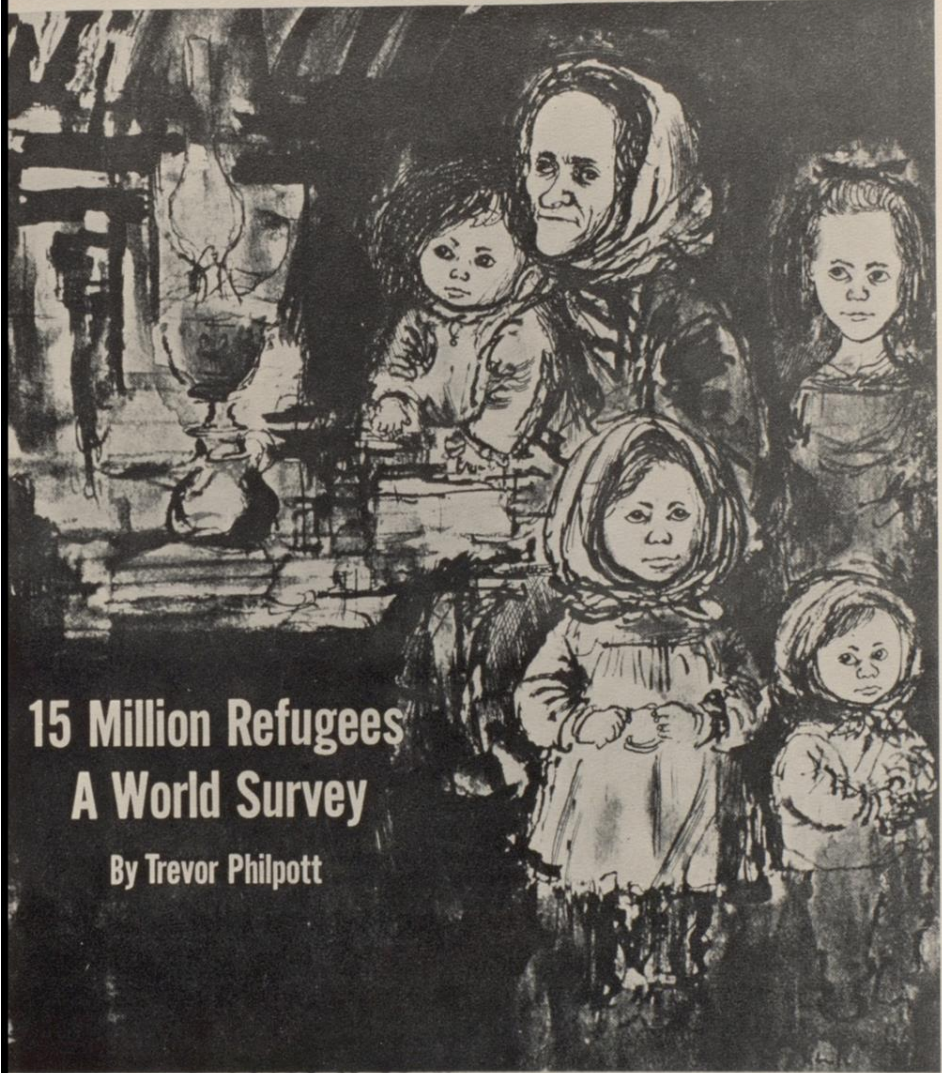
A Glowing Example of our School Spirit





# The ROTARIAN

An International Magazine



## 15 Million Refugees A World Survey

By Trevor Philpott

O  
R  
G  
A  
N  
I  
Z  
A  
T  
I  
O  
N  
S

The Refugees — A Symposium on Solutions  
ERWIN D. CANHAM    OSCAR HANDLIN    PAUL G. HOFFMAN  
A. C. JONES HIGH SCHOOL  
FRUITLAND, TEXAS

DECEMBER ■ 1960



KEY CLUB SWEETHEART Harriet Younts



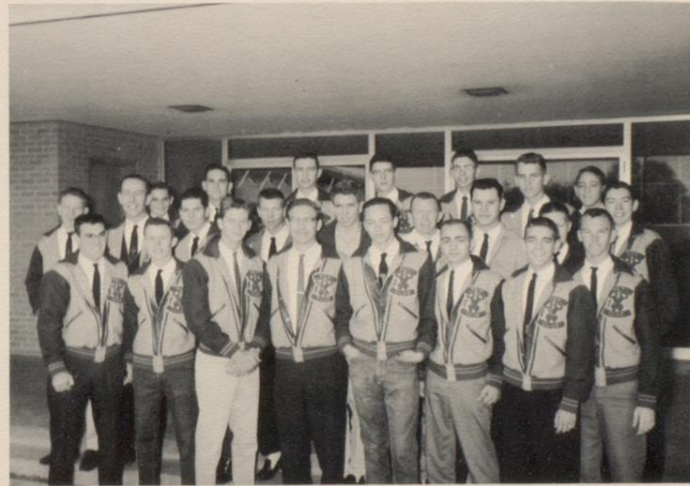


OFFICERS

Left to Right, Standing: John West, Secretary; Johnny Bell, Treasurer; George Contrino, Sergeant-at-Arms; Tommy Amen, Recording Secretary. Front Row, seated: Jimmy Polozeck, Vice-President; Charles Pogue, Lt. Governor, District IV, and Maynard Green, President.

## KEY CLUB

THE KEY CLUB is an international service organization sponsored by the Kiwanis Club. Its members consist of boys of high school age with a scholastic average of 85%. Its goals are to build better citizens for tomorrow and to undertake worthwhile projects. The Beeville Club was initiated in 1955 and is part of Division IV of the Texas-Oklahoma District.



Left to right, Front Row: Maynard Green, Charles Pogue, Richard Bertram, Jimmy Polozeck, George Morrill, George Contrino, Johnny Bell, Paul Stephenson; Second Row: C. B. Trial, John West, Eddie Dunn, Dan Douglas, Paul Spikes, Robert Ball, Edward Dozier, Mac Spellman, Tommy Amen; Top Row: James Leeton, Clifton Rowland, Claude Gotthardt, Jimmy Jackson, Pat Stricklin, Richard Young, Tom McPherson.



THESPIAN SWEETHEART Sharon Marion





## THESPIANS

Left to Right, 1st Row: Carol Vanderstucken, Carol Jackson, Sarah Jane Ennis, Jane Turner, Judy Turner, Sharon Marion, Mr. Harral Peacock; 2nd Row: Harriet Younts, Ruth Austen, George Brin, Jimmy Jackson, Jack Burns; 3rd Row: Johnny Bell, George Contrino, John Beasley, Bobby Fraser; 4th Row: John West, Fred Cox, Mary Louise Everett, Barbara Burns, Aubrey Martin, Gene Stephenson



Left to Right: Sarah Jane Ennis, Historian; Carol Jackson, Treasurer; George Brin, Vice-President; Sharon Marion, President; Mary Louise Everett, Secretary

Thespians Troup No. 1618 of the National Thespians Society was started in the fall semester of 1959. It is devoted to the advancement of dramatic arts in the secondary schools. Membership is gained by earning ten points following a point system set up by the National organization.



D. E. CLUB SWEETHEART Linda Cox





Standing, Front: Mary Garza, Sec-Treas; Tony Soliz, Pres; Gloria Borrego, Reporter; Back: Serafin Leal, V-Pres; Santos Garcia, Parliamentarian; Mr. Hensley, Sponsor; (Not Pictured) Lydia Ramirez, Historian

The local D. E. C. A. Club was organized in November of 1950 and was issued Charter No. 9. Distributive Education is a vocational program especially designed to teach high school boys and girls the fundamentals of retail, wholesale, and service-selling businesses. At the present time there is an annual enrollment of 30,000 D. E. students.

## D.E. CLUB

Left to Right: Gilbert Guerrero, Jeanette Alexander, Linda Cox, Josie Cantu, Mary Ann DeRusse, Serafin Leal, Gilbert Sylva, Lesley Henry, Gene Payne, Ralph Nelson, Santos Garcia, Alex Rosales, Jimmy Martinez, Tony Soliz, Lupe Rodriguez, Adolfo Guerrero, Augustin Vidauri, Martin Millard, Ernest Molina, Mr. Hensley





ANNUAL STAFF SWEETHEART Nancy Lawson





## TROJAN ANNUAL STAFF

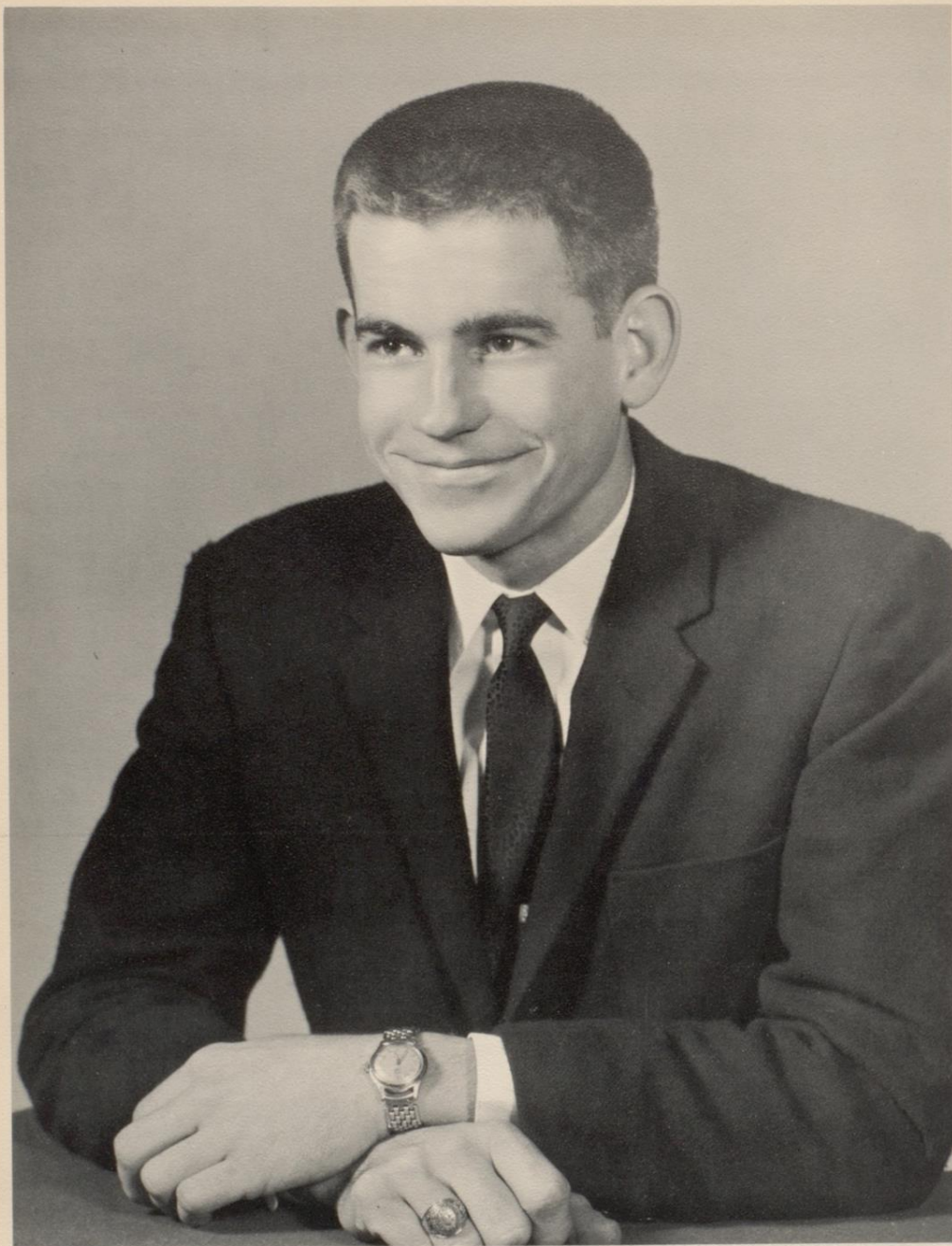
Left to Right: 1st Row: Fay Blackburn, Stanley Anderson, Sandra Ward, Carol Dement, Skooter Wyrick, Janet Taylor, Claudia McCarty; 2nd Row: Kay Blackburn, Barbara Burns, Mary Ann Geisler, Carol Jackson, John West, Nancy Lawson, Sarah Jane Ennis, Harriet Younts, Mrs. Dougherty; 3rd Row: Becky Fey, Johnny Spikes, Reynolds Tharp, Elizabeth Grove, Cindy Slay, Dawn Looker, Viola Wright, Bobby Frazer, Clemente Aguilar; 4th Row: Ruth Austen, Johnny Bell, Jerry Bond, Robert Ball, Bob Vanderhule, Michael Adkins, Aubrey Martin



"Doctor Livingston, we presume."

The first Trojan Annual was published thirty years ago in 1931, the year our Assistant Principal, Mr. Archie Hatcher, graduated. This first annual was an undercover project because Mr. Madera, the Principal, did not give it his blessings; thus, our annual, like many other new projects, had to fight for its existence.

John West, Editor-in-chief; Mary Ann Geisler, Associate Editor; Nancy Lawson, Lay-out Editor; Aubrey Martin, Business Manager; Jerry Bond, Assistant Business Manager; Ruth Austen, Art Editor; Bob Vanderhule, Program Editor; Carol Lea Dement, Assistant Lay-out Ed., John Bell, Photographer; John Beasley, Photographer; Bobby Frazer, Photographer; Reynolds Tharp, Sales Manager.



SECRETARIAL ARTS CLUB BEAU Thad Moore



# SECRETARIAL ARTS CLUB

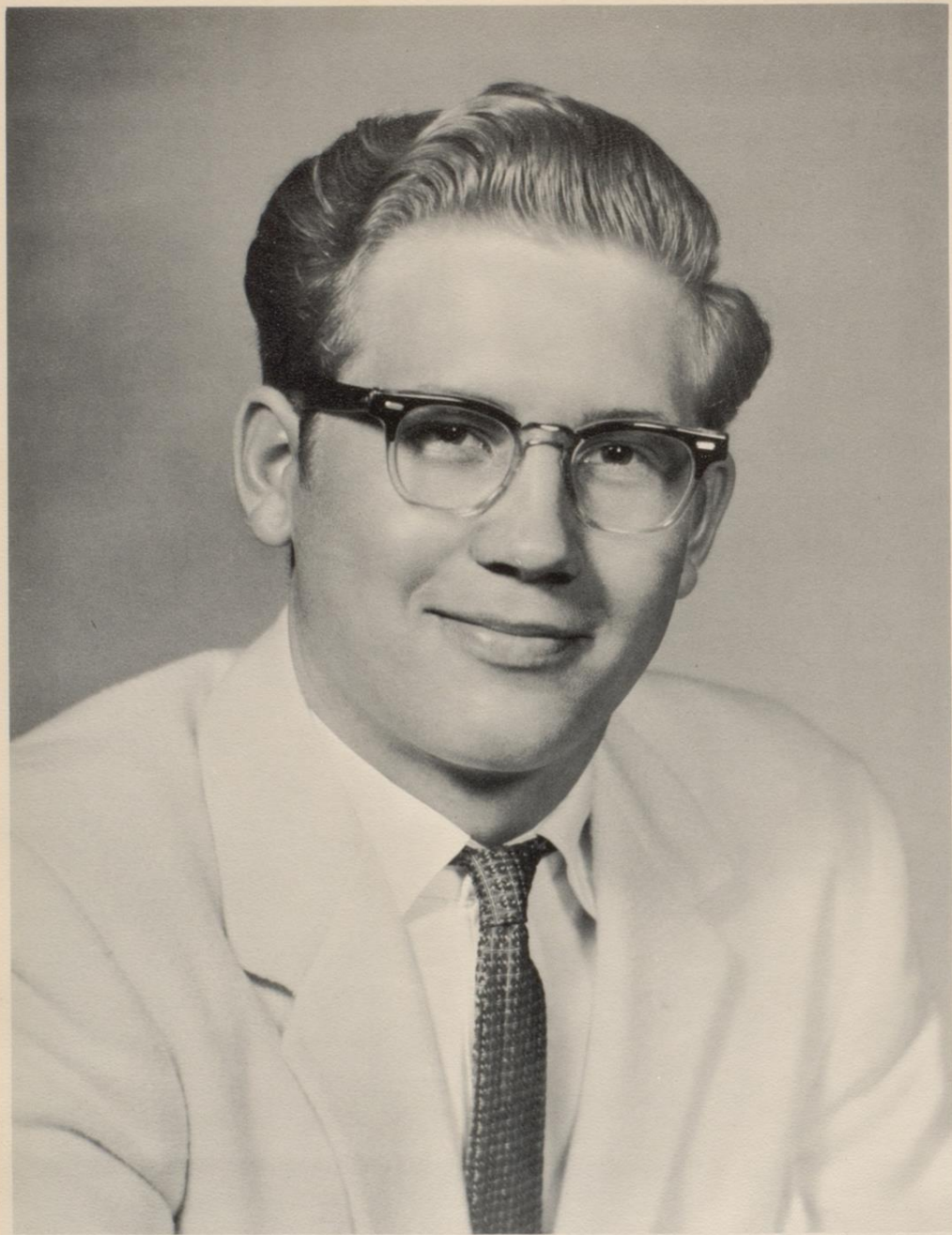


Bottom Row: Lydia Casarez, Florett Huebner, Harriet Younts, Roxie Ann Lowe, Jane Turner, Hore Luna, Mary Ann Vaughn, Salura Owings; Middle Row: Alicia Adamez, Patsy M. Balderas, Mary Helen Castillo, Judy Neal, Sandra Ward, Janet Taylor, Noemi Mayorga, Sarah Kay Handy; Top Row: Frances Almaraz, Mary Jane Trial, Carol Dement, Kathryn Wyrick, Barbara Burns, Thad Moore, Betty Koenig, Cherry Broadway, Claudette Oswalt, Frances Sinor, and Mary Childers

The Secretarial Arts Club was organized in 1957. Only those students enrolled in Secretarial Training are eligible for membership. Its members participate in an on-the-job training project the last six weeks of the school term. Local business and professional men have been very cooperative in helping carry out this program. The Industrial Arts Club is its "Big-Brother" organization, from whose members it elects its Club Beau. Club OFFICERS are: Scooter Wyrick, President; Sandra Ward, V. P.; Sec. -Treas., Frances Sinor; Judy Neal, Rep.



". . . and some sprout Wings."



LIBRARY CLUB BEAU Jimmy Polozeck





## LIBRARY CLUB

Seated, left to right: Kathy Young, Carol Dement, Helen Jackson, Rosemary Reagan, Standing: Betty Koenig, Helen Juenger, Carolyn McGill, Martha Helvenston, Cheryl Houlihan, Sabra Ann Everett, Dawn Looker, Annette Younts, Reba Youngblood, Mary Jane Hughes, Tom Phillips, Kathleen Heidenfels, Mrs. Ina West, Dusty West, Harriet Younts, Myra Odom, Carolyn Reagan

The Library Club was established in A. C. Jones High School soon after the library was established in 1938. In 1951, we joined TALA (Teen-Age Library Asso.) of Texas. Mrs. Ina West, librarian, is now our club sponsor. We are active in District IV and in the past years have filled four district offices. In November, 1960, our club was elected president of our District, and Reba Youngblood will represent us. We will also run for a state office at the state meeting in San Antonio which will be held this February. This year our 26 members selected a name, Los Necesarios, for the club, which is Spanish for, "the necessary ones," which we feel is quite appropriate.



Reba Youngblood, Secretary; Mary Jane Hughes, Parliamentarian; Myra Odom, V-Pres.; Harriet Younts, Pres.; Martha Helvenston, Historian; Dawn Looker, Treasurer



F.H.A. CLUB BEAU Bob Vanderhule





## FUTURE HOMEMAKERS OF AMERICA

1st Row: Patsy Henry, Linda Turner, Mary Ann Borchers, Jay Moore, Kathryn Wyrick, Stanley Anderson, Barbara Burns, Harriet Younts, Annette Younts; 2nd Row: Carole Brown, Salura Owings, Zelma Davis, Paula Spangenberg, Marion Alexander, Beverly Gray, Linda Hughes, Becky Fey, Judy Rider; Standing, left to right: Shirley Wright, Nana Kelley, Jane Searcy, Mary Jo Sturm, Eileen Martin, Kathleen Heldenfels, Connie Wrinkle, Beth Denton, Mary Ellen Humphrey, Belinda Hogan, Kathy Anderson, Viola Wright, Mary Jane Trial, Kay Neel, Betty Koenig, Rosemary Rendon, Margaret Peters, Mary Alice Medina, Anita Munoz, Myra Odom



Standing, 1 to r: Jay Moore, 3rd V-P; Mary A. Borchers, Rec. Sec; Linda Hughes, Hist; Carole Brown, Treas; Viola Wright, Parl; Myra Odom, 2nd V-P; Sitting, 1 to r: Betty Koenig, Corres. Sec; Kathryn Wyrick, Rep; Barbara Burns, 1st V-P; Linda Turner, President

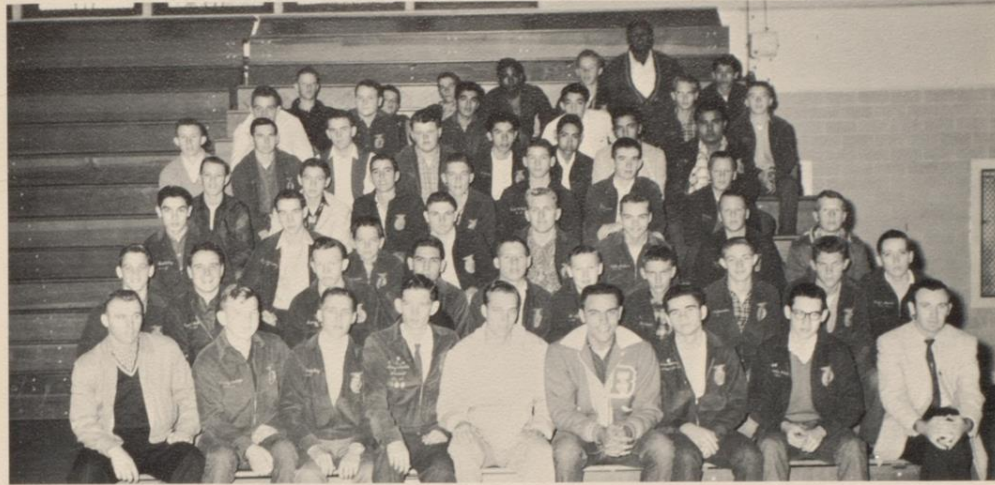
The Future Homemakers of America is a national organization for students who are studying homemaking or have studied it for one year in junior or senior high school. It offers opportunity for further development of student initiative in planning and carrying out activities related to homemaking. FHA has existed in A. C. Jones High School for approximately 15 years. The FHA colors are red and white and the red rose is its flower. "Toward New Horizons" is the motto of the Future Homemakers of America.



F.F.A. CLUB SWEETHEART Viola Wright



# F.F.A.



Bottom Row, L to R: Mr. Erier, Jimmy Owings, Bobby Humphrey, Aubrey Martin, Robert Baylor, Michael Sturm, Gordon Searcy, Martin Millard, Mr. Kenneth Faußian; Second Row: Timmy Rider, Pepper Mabray, George Matocha, Paul Gonzalez, Michael Millard, David Wolfe, Ellis Harrison, Kenneth Odenwelder, Howard Peters, Roger Baird; Third Row: Joe Baldillez, Jimmy Searcy, Egan Stedman, Freddie Zander, Robert Dallas, Bobby Andrews, Jimmy Aman, Richard Bernsen; Fourth Row: Sidney Dugat, Donald Searcy, Dick Huser, Ernest Boemer, Wylie McMahon, Jimmy Sanders, Robert Aman; Fifth Row: Charles Pogue, Billy Hester, Mac Workman, Biddy Huegler, Victor Salazar, Daniel Gomez, Reyes Garcia, Able Garcia; Sixth Row: Larry Huegler, Dickie Hancock, Cirelido Puente, Marcos Torres, Fred Davis, Joseph Greer; Seventh Row: Buddy Brown, Preston Herbert, Walter Wright, Lupe Gomez, Allen Rothlisberger, Larry Denson, Baldemar Comacho

The Beeville FFA Chapter, operating under Charter # 240 of the Texas Association was chartered in January of 1932. The Beeville Chapter ranks one of the highest in the State in the number of Lone Star Farmers and American Farmers. The Future Farmers of America is the largest farm-boy organization in the world. The FFA is of, by, and for boys studying agriculture in school. The Future Farmer colors are National Blue and Corn Gold. The motto is: "Learning to do; doing to learn; earning to live; living to serve." The primary purposes of the FFA are the development of agricultural leadership, cooperation, and citizenship.



FFA Chapter Officers, Seated, L to R: Aubrey Martin, Rep., Bob Humphrey, V.P., Mac Workman, Pres.; Standing: Geo. Matocha, Treas., Freddie Davis, Sentinel, Paul Gonzales, Parliamentarian, Benny Ford, Chaplain



Greenhand Officers, Seated, L to R: Timmy Rider, Treasurer, Wylie McMahon, Parliamentarian, Robert Aman, Secretary, Standing, David Wolfe, Reporter, Jimmy Sanders, President, Jimmy Aman, Sentinel, Kenneth Odenwelder, V. P.



INDUSTRIAL ARTS CLUB SWEETHEART Barbara Burns





## INDUSTRIAL ARTS CLUB

Front Row: Bufford Eeds; Phillip Terry; Johnny Bell; Sam Tharp; Evelyn Crow; Thad Moore; Noberto Garcia; 2nd Row: Erineo Perez; Robert Douglas; Dieter Ralston; Gordon Searcy; Tony Rendon; Pat McWhorter; Lupe Rodriguez; 3rd Row: Kenneth Hinderman; Basilio Saucedo; Billy Tom Payne; Joel Case; Jerry Bond; Julian Longoria; Jimmy Higgs; 4th Row: James Martin; Margarito Perez; James King; Adam Cooley; Arthur Nutt; David Carlson; Maynard Green; Franklin Taylor; Paul Stevenson; Carlos Gomez; Ronald Gordon; Raymond Eissler; Carol Prewitt; 5th Row: Johnny Madrigal; Brian Payne; Bob Turner; Edward Canada; Abel Garcia; Andreas Lozano; Edgar Rothlisberger; Nancy Lawson; Richard Reese; Bill Hermann; Reyes Camacho; Ellis Greer; John McMahan; 6th Row: Pete Gonzales; Alfredo Yzaguirre; Frank Maldonado; Carlos Guerrero; Jimmy Jackson; John Beasley; John West; Back Row: Leon Eason; Johnny Vela; Ruben Sylva; James Summers.



Mr. John Henshall, Sponsor

The Industrial Arts Club is a National organization composed as students of high school and college age. Its goals are to prepare young people for the technical jobs. The A. C. Jones High Club consists of all students participating in shop and mechanical drawing. Students enter their projects in competition with other schools participating in an Industrial Arts program held in Kingsville every Spring semester.



SPANISH CLUB SWEETHEART Dianne Gotthardt





## SPANISH CLUB

El círculo español, was organized in May of 1959 with Mr. Allen Donaho as sponsor. It is a member of the Pan American Student Forum, an international organization which has been under the sponsorship of the Good Neighbor Commission since 1949. The purpose of the PASF is to create a better understanding between the English speaking and the Spanish speaking cultures of the Americas.

"Poco a poco se va lejos"



Mr. Allen Donaho, Sponsor



### OFFICERS

Seated, left to right; Sharon Marion, Reporter; George Brin, President; Martha Helvenston, Vice President; Phyllis, McGill, Secretary-Treasurer; Standing, Dan Douglas, Program Chairman; Jimmy Jackson, Corresponding Secretary.



LATIN CLUB SWEETHEART Claudia McCarty



# SENATUS POPULUSQUE ROMANUS



Left to Right: 1st Row: Daniel McGill, Mary Ann Borchers, Sandra Mitchell, Carol VanderStucken, Jane Hector, Claudia McCarty, Patsy Turnipseede, Sarah Kay Handy, Helen Grove, Sandra Caffall, Sharon Mussett, Sandra Foster, Judy Bowman, Wendel Fuqua; 2nd Row: Jimmy Mericle, Tom McPherson, Stanley Anderson, Mary Douglas, Reba Youngblood, Jayne Lund-schen, Trudy Rose, Dolores Vidauri, Jesusa Tapia, Dusty West, Mary McMillan, Ingrid Maier; 3rd Row: Mrs. Iola Olsen, Ben Hernandez, Kirk Wilson, Mike Wooten, Carl Holubec, Pat Taft, Nedra Schott, Sabra Ann Everett, Mary Ellen Handy, Carol Jackson, Sarah Jane Ennis, Darlene Lawrence, Barbara Paulsen, Helen Jackson, Helen Juenger, Paulette Bauer, Mary Ann Bell, Adelina Adamez, Manuel Zapata, Lupe Trevino, Felix Reyna, Pete Saldivar; 4th Row: Bob Lothringer, Phillip Parker, Donald Buffkin, Tom Phillips, Henry Medina, Eileen Martin, Nancy Lawson, Dawn Looker, Carrell Briscoe, Bertha Perez, Diana Ramirez, Vilma Martinez; 5th Row: Gary Gallandat, James Glick, Bill Browning, James Dieckow, Paul Spikes, Bob Vanderhule, Joe Orchard, Garvin Downes, Tony Carpenter, Mary Helen Chamberlain, Evangelina Molina, Ricky Glenzer, Clifton Rowland, Hollis McKinney, Ronnie Moore, Henry Mitchell, Jesus Gomez, Caroline Love



OFFICERS: Judy Bowman, Secretary; Manuel Zapata, Treas; Sandy Caffall, Reporter; Mary Ellen Handy, President; Mary Ann Borchers, V-President

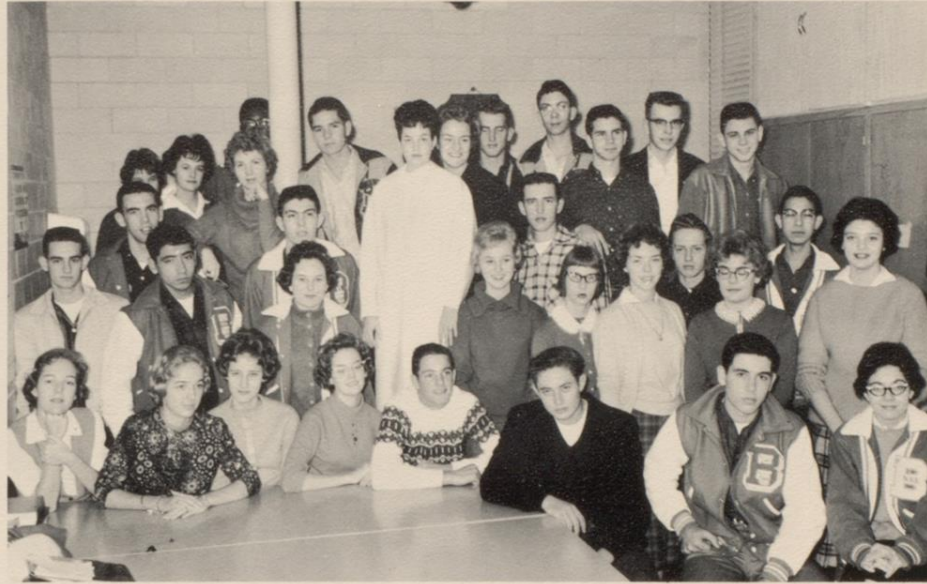
The Latin Club was organized in 1957 under Mrs. Iola Olsen who has sponsored it since that time. In the Spring Semester of 1960 the department attended the State Convention at Port Arthur where Joan Hebert won third place for her costume entry. The Latin Club is affiliated with the Texas State Junior Classical League and the National Junior Classical League. State Convention convenes in Austin this year.



TROJAN NEWSPAPER SWEETHEART Betty Caffall



# TROJAN NEWSPAPER STAFF



Left to Right: Seated: Judy Turner, Jane Turner, Judy Neal, Sarah Kay Handy, Sam Tharp, Jack Duke, George Brin, Mary Louise Everett; Standing, 1st Row: John Nowlin, Clemente Aguilar, Betty Caffall, Mary Ann Borchers, Sandy Caffall, Rosemary Reagan, Cindy Slay, Gay Wilson, Dianna Kenny; 2nd Row: Bob Vanderhule, Sharon Marion, Gerald Garcia, Eddie Dunn, Reba Youngblood, Richard Young, Pat Stricklin, Johnny Nelson, Connie Holmquist, Mike Walker; Back Row: Barbara Paulsen, Mary Ellen Handy, Dean Hinderman.



## JOURNALISM CLASS

Seated: Sam Tharp, Jane Turner, Sharon Marion. Standing: Mary Louise Everett, Jack Duke, Judy Turner, Claude Gotthardt, Sarah Kay Handy, and Connie Holmquist

The TROJAN newspaper is one of the oldest organizations in JHS; it was first published in 1926. Since 1946 Miss Jean Dugat has been sponsor of the TROJAN and the journalism students. In the last four years the TROJAN has won top honors in the University Interscholastic League press conference work.



CHOIR SWEETHEART Josie Cantu





1st Row, L to R: Director Jack Felts, Dorothy Baltazar, Blanche Rodriguez, Lupita Lopez, Consuelo Garcia, Mary Alice Cantu, Jo Ethel Fuentes, Cherry Broadway, Josie Cantu, Hore Luna, Ingrid Maier, Shirley Elsberry; 2nd Row: Beverly Gray, Jane Searcy, Kaye Neel, Mary Alice Perez, Ina Ray DeRusse, Alicia Palacios, Mary Douglas, Madeline Boufford, Carol Jackson, Rosa Ramirez, Jo Ann Martin, Caroline Love; 2nd Row: Elias Villarreal, Robert Ball, Ray Villarreal, Gary Boenig, Robert Nunoz, John Nunoz, Daniel Vargas, Donald Denton, Gene Stephenson, Raleah Williams, Richard Rothlisberg, Don Wilson, Ronald Denton.

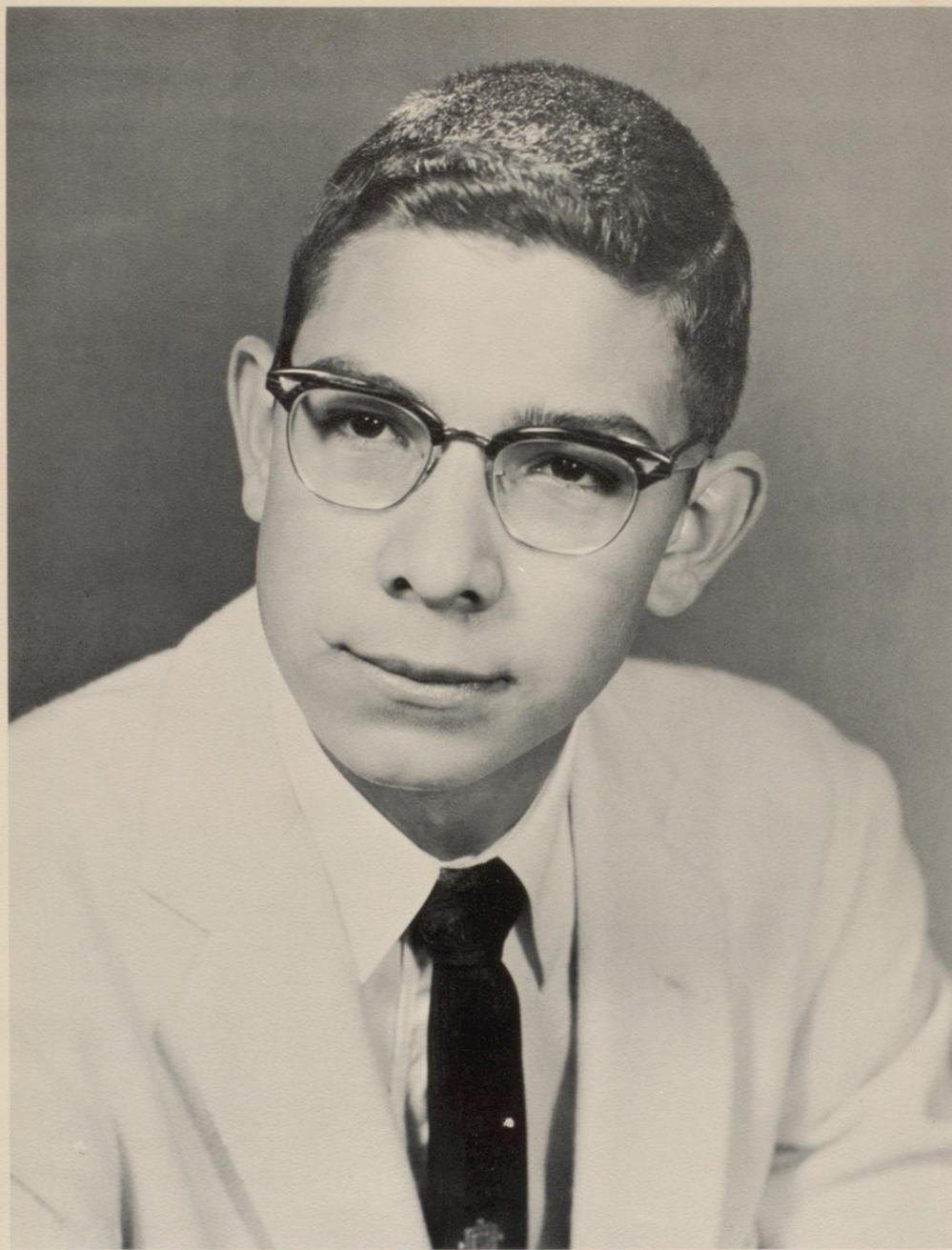
## CHOIR

The present A. C. Jones A-Cappella Choir began in 1957 with only five members, by the end of the second semester the number had increased to 27. For the past 4 years the choir has been improving steadily in number and quality. In the spring of 1960 the choir made its first tour, taking different routes to and from Austin, presenting five different concerts. Plans are being made for another tour this Spring. In 1958, the second year after its organizations, 4 members made the All-State Choir. There were four members who made the All-Regional in 1959; this year 8 made all Regional, with 2 of the 8 making All-State Choir.

### REGIONAL CHOIR

Front Row: Jane Searcy, Cherry Broadway, Mary Douglas; Second Row: Robert Ball, Gary Boenig, Daniel Vargas, Donald Denton, Gene Stephenson





FUTURE TEACHERS' BEAU Manuel Zapata



# FUTURE TEACHERS OF AMERICA

The Floyd W. Parsons Club, so named in honor of a former Superintendent of this school district, was chartered on May 11, 1954. Since its inception the club has continuously been in good standing with the Texas State Teachers Association and the National Educators' Association. For its members the club affords an exploratory service into the occupational field of teaching, as well as a service of partime substitute teaching. A member of the FTA may continue his membership into a related organization that exists at the college level.



## OFFICERS

Judy Neal, Pres; Manuel Zapata, V-P, Sharon Ann Marion, Sec-Treas; Miss Miller, Sponsor; Kathryn Wyrick, Linda Turner, Program Chairmen.



First Row: Gay Wilson, Diana Kenney, Mary McMillan, Nedra Schott, Alicia Adamez, Patsy Balderas; Second Row: Reba Youngblood, Sandra Mitchell, Ingrid Maier, Mary Ann Geisler, Carol Jackson, Kathryn Wyrick, Jo Lynn Gough, Phyllis McGill, Darlene Lawrence; Standing: Helen Jackson, Connie Wrinkle, Salura Owings, Linda Turner, Myra Odom, Sarah Jane Ennis, Mary Douglas, Beckey Fey, Judy Neal, Manuel Zapata, Sarah Handy, Sandra Ward, Clemente Aquilar, Paulette Bauer, Gerald Garcia, Shirley Wright.



BAND SWEETHEART Linda Turner





Kneeling Majorettes: Judy Bowman, Jo Lynn Gough, Mary Ann Geisler, Carol Yount, Kathy Taylor, Margaret Ann Mulkey, Patsy Turnipseede, Sharon Mussétt; Inside Row: Jane Searcy, Nedra Schott, Carol Jackson, Sandra Mitchell, Sarah Jane Ennis, Kaye Love, Bertha Perez, Dianne Gotthardt, Roxie Lowe; 2nd Row: Salura Owings, Dianna Kenny, Eileen Martin, Jane Hector, Suellen Bennett, Bill Browning, Johnnie Mae Kay, Susan May, Caroline Love, Theresa Gasarez, Marilyn Batchelor, 3rd Row: Dorothy Baltazar, Martha Medina, Mary Ann Bell, Billie Jean Horton, Sylvia Sanchez, Diana Ramirez, Mary Rendon, Mary Rengal, Manuel Trevino, Velma Martinez, Ord Gary Boenig, Robert Ball, Edmond Stempel, Linda Lou Turner, Trudy Rose, Ann Pullin, Gayla Gandy, Gene Stephenson; Outside Row: Phillip Terry, Pat McWhorter, Junior Perez, Manuel Tijerina, Wendell Fuqua, Jesse Villarreal, Mike Reagan, Phillip Parsons, Aubrey Martin, Pepper Mabray, James McMurrey, Johnny Vela, Richard Espinosa, Jimmy Owings, Arthur Nutt, Sandra Foster, Johnny Nelson; Standing: Mr. Felts, Dennis Dewitt, Jerry Stephenson, Ernest Boemer, Terry Briscoe.

## BAND

The mighty Trojan Band was formed in the early 30's. It now has more than 85 members under the direction of Mr. Jack Felts. It has won various honors, including trophies from the Buccaneer Day Parade, the Cuero Turkey Trot and many other festivals.

### BAND STAFF

Back Row: Robert Ball, Pres; Johnny Nelson, Rep; Mr. Felts; Dir; James McMurrey, Equip. Man.; Gene Stephenson, St. Dir; Front Row: Linda Turner, St. Dir; Carol Jackson; Lib; Carol Yount, Drum Maj; Sandra Mitchell, Treas; Sarah Jane Ennis, Treasurer.



# MAJORETTES



Left to Right: Judy Bowman, Jo Lynn Gough, Mary Ann Geisler, Carol Younts, Drum Major, Margaret Mulkey, Patsy Turnipseede, and Sharon Mussett. Kneeling: Kathy Taylor, Feature Twirler.



Linda Turner, Alternate Drum Major



# STUDENT COUNCIL



Left to Right, 1st Row: Mary Ellen Humphrey, Carol Vanderstucken, Patsy Turnipseede, Elizabeth Groves, Jame Turner, Mary Jane Hughes, Patti Dillingham, Judy Turner, Kathy Taylor, Lynda Broadway; 2nd Row: Mary McMillan, Stanley Ann Anderson, Janet Taylor, Phyllis McGill, Paul Spikes, Sharon Marion, Dianne Gotthardt, Betty Caffall, Chipper Toliver; 3rd Row: Pat Stricklin, Jimmy Tanner, Jody Council, Jimmy Polozeck, Conny Holmquist, Tony Carpenter, Manuel Zapata, Judy Neal, Richard Young.

The Student Council has been an active organization in J. H. S. for ten years. The Council is an accredited member of the National Association of Student Councils, Texas Associations of Student Councils, and the Central Gulf Coast Association of Student Councils. Members are elected each May or September in a school-wide election. The purpose of the Council is to provide experience in student government and leadership.



## OFFICERS

1st Row: Betty Caffall, rec. secretary; Jane Turner, Corres. Sec.; Judy Turner, Pres.; 2nd Row: Judy Neal, V.P.; Elizabeth Grove, Historian; Richard Young, District Parliamentarian; Janet Taylor, Treasurer

# NATIONAL HONOR SOCIETY



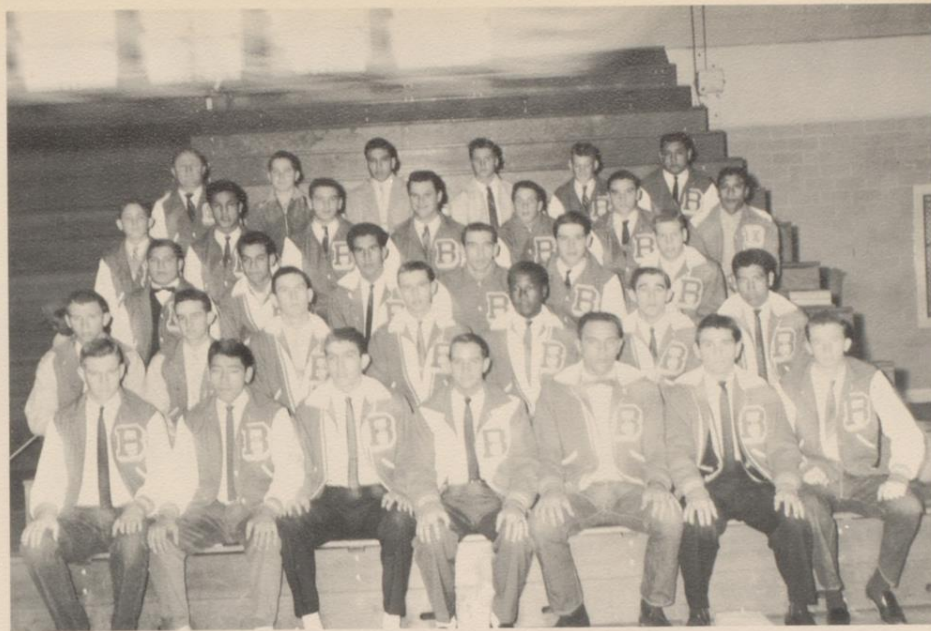
Left to Right, Seated: Linda Turner, Judy Turner, Skooter Wyrick, Harriet Kay Younts, Sharon Marion, Sarah Kay Handy, Phyllis McGill, Nancy Lawson: Standing, 2nd Row: Betty Caffall, Betty Koenig, Mary Ann Borchers, Mary Jane Hughes, Jane Turner, Stanley Anderson, Judy Neal, Mary Louise Everett, Reba Youngblood, Mary Ann Geisler. 3rd Row: Gerald Garcia, Jimmy Tanner, Jimmy Jackson, Aubrey Martin, Manuel Zapata



OFFICERS: Sarah Kay Handy, V-President; Mary Louise Everett, President; Betty Caffall, Sec-Treasurer.

The R. A. Hall Chapter of the National Honor Society was chartered on February 10, 1953. The chapter was named after the president of the school board, Mr. R. A. Hall. Mr. Hall has always shown a great deal of interest in young people and their betterment. The membership is based on scholarship, leadership, citizenship, and service. The first chapter members were elected in April, 1953 and were sponsored by Miss Irene Olin, senior English teacher. In the first group, there were fourteen Seniors, five Juniors, and four Sophomores. The first officers were installed on May 19, 1953. The sponsorship changed to Mr. Elam when Miss Olin took a year's leave of absence. This year the sponsor is Mrs. Paul Kuhnert.



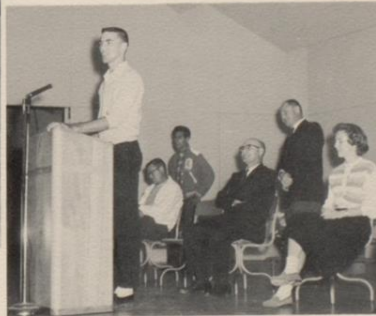


Left to Right, Bottom Row: Jimmy Tanner, Clemente Aguilar, Gerald Garcia, Jimmy Turnipseede, Mike Sturm, Henry Medina, Monte Dickinson; Second Row: Joel Case, John Nowlin, Fred Cox, Claude Gotthardt, Kenneth Hinderman, Beaver Rider, Margarito Perez; Third Row: Javier DeAnda, Henry Ramirez, Pilar DeLeon, Bob Vanderhule, George Brin, Bob Clark; 4th Row: Tom McPherson, Refugio Alonzo, Larry Hunter, Eddie Dozier, Sam Tharp, Crayton Hunter, Domingo Garcia; Top Row: Coach Kassen, Bryan Payne, Paul Gonzales, Robbie Dunn, Pat Wells, Dan Vargus.

## LETTERMAN'S CLUB



Pilar DeLeon



Bob Vanderhule

Jimmy Turnipseede



## 1960'S CO-CAPTAINS



Left to Right, Front Row: Phyllis McGill, Norma Jean Beebe, Roxie Ann Lowe, Darlene Walter, Jackie Oswalt, Tommy Comacho, Paul Santellana, Carl Martin; Back Row: Mr. Joe Batchelor, sponsor, Margarito Perez, Dennis Creswell, Clemente Aguilar, Lupe Trevino, Billy Alexander, Pete Saldivar

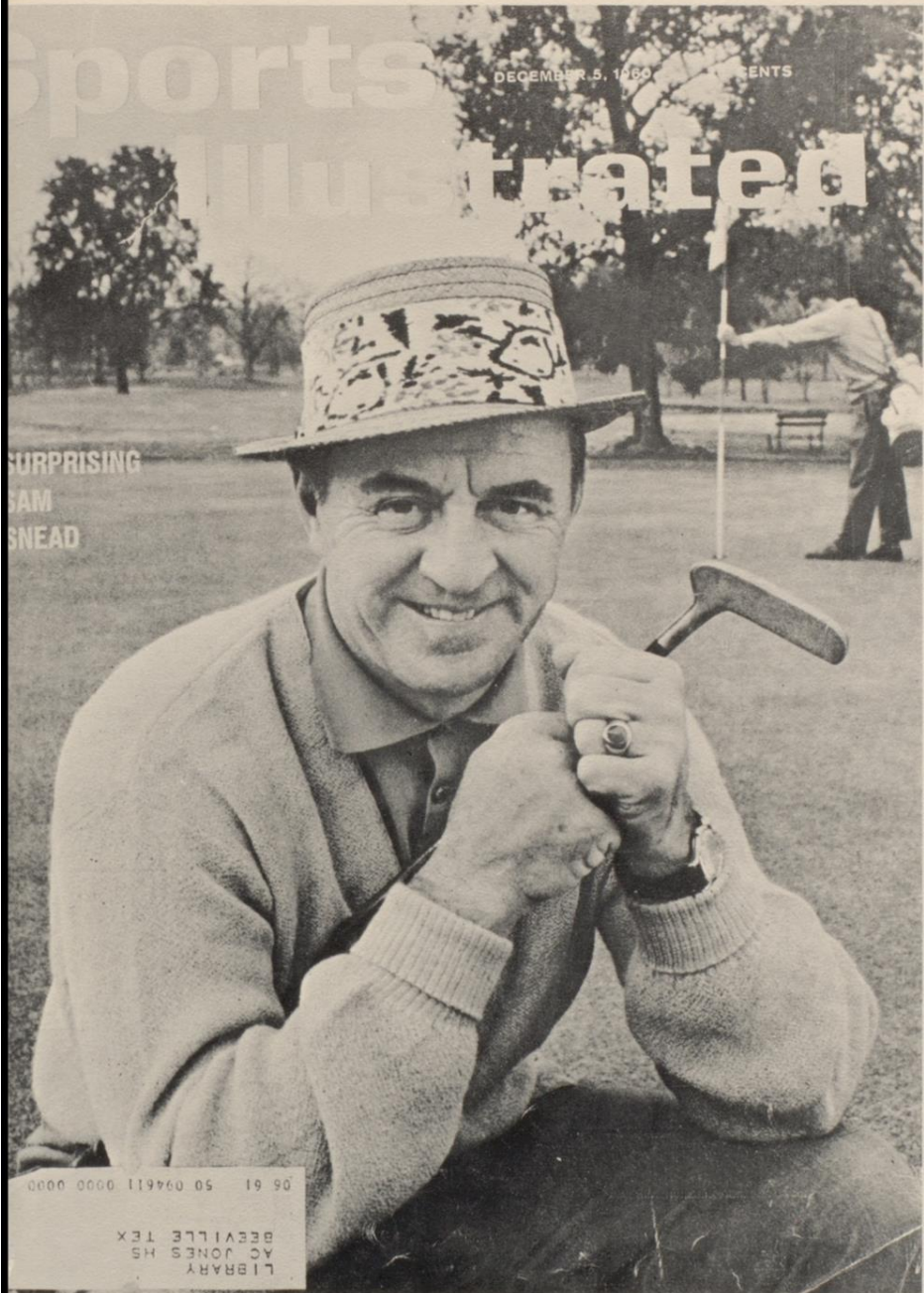
## J.H.S. TEXAS HISTORY CLUB

Composed of fifteen members whose purpose is to foster an interest in the history of the local community, our State, and the world. The Junior Historian conducts projects and attempts to write on historical subjects of interest to him.



Officers: Carl Martin, President; Phyllis McGill, Sec. -Treasurer.





# Sports Illustrated

DECEMBER 5, 1960 PRESENTS

SURPRISING  
TEAM  
SNEAD

S  
P  
O  
R  
T  
S

LIBRARY  
AC JONES HS  
BEEVILLE TEX  
05 61 50 094611 0000 0000

# CHEERLEADERS



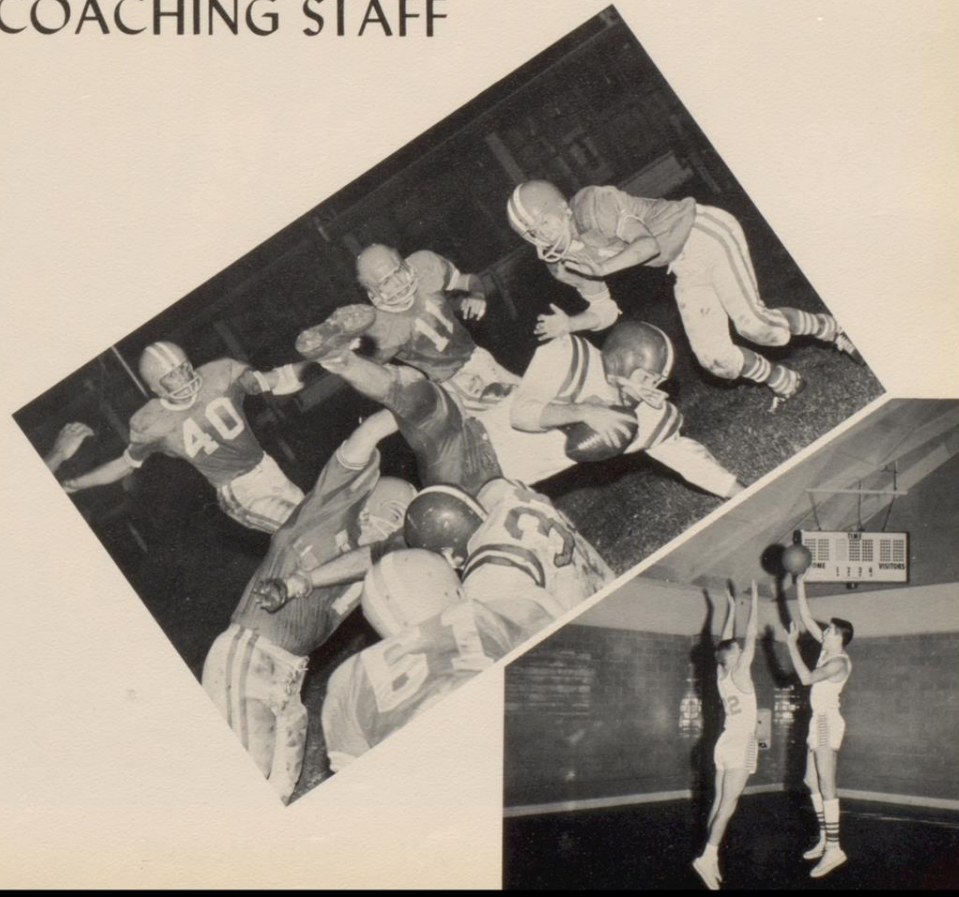
Standing, left to right: Mary Jane Hughes; Janet Taylor; Jane Turner, Head Cheerleader; Judy Turner, Judy Stout. Kneeling, left to right: Claudia McCarty, Kathy Young.





Left to Right: Head Coach Tex Kassen; Don Scott, Basketball; Dave Green, Football & Track; and Vernon Ullman, Freshmen

## COACHING STAFF





FOOTBALL SWEETHEART Phyllis McGill





## TROJAN VARSITY SQUAD

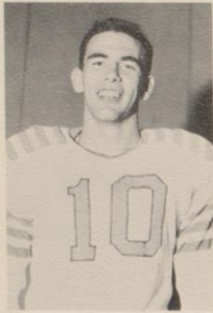
Bottom Row: Bob Vanderhule, Gerald Garcia, Sonny Hickman, Henry Medina, Bob Clark, Clinton Ham, Erasmo Rojas, Johnny Bell, Beaver Rider, Jimmy Turnipseede, Joe Gonzales. Middle Row: Jody Ramirez, Paul Spikes, Mike Sturm, Bacilio Saucedo, Refugio Alonzo, George Brin, Javier DeAnda, Robbie Dunn, Eddie Dozier, Larry Hunter, Margarito Perez, Jimmy Tanner. Top Row: Coach Tex Kassen, Pete Saldivar, Daniel Vargas, Crayton Hunter, Kenneth Hinderman, Pilar DeLeon, Henry Ramirez, Monte Dickinson, Sammy Tharp, Coach Dave Green.

Beeville Trojans	0	Sinton Pirates	26
Beeville Trojans	14	Refugio Bobcats	12
Beeville Trojans	27	San Antonio Rams	0
Beeville Trojans	18	Laredo Tigers	6
Beeville Trojans	14	Falfurrias Jerseys	2
Beeville Trojans	33	Cuero Gobblers	6
Beeville Trojans	6	Robstown Cotton Pickers	6
Beeville Trojans	0	Kingsville Brahmas	22
Beeville Trojans	26	Aransas Pass Panthers	7
Beeville Trojans	0	Port Lavaca Sandcrabs	28

Won 6, lost 3, tied 1

In the District: Won 2, lost 2, tied 1

Winner: Tied for third place in the District.



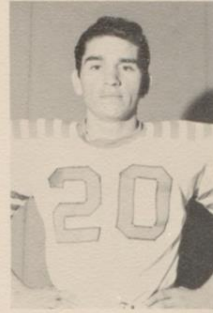
Bob Vanderhule  
Fullback  
Lettered one year  
Captain, All District



Gerald Garcia  
Quarterback  
Lettered two years  
All District



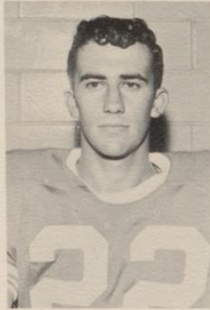
Sonny Hickman  
Quarterback  
Lettered one year



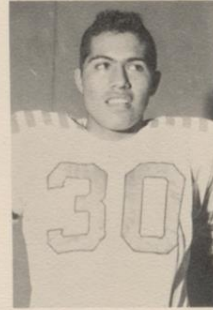
Henry Medina  
Left Halfback  
Lettered two years



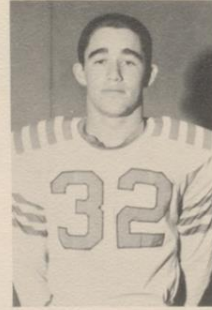
Bob Clark  
Right Halfback  
Lettered one year



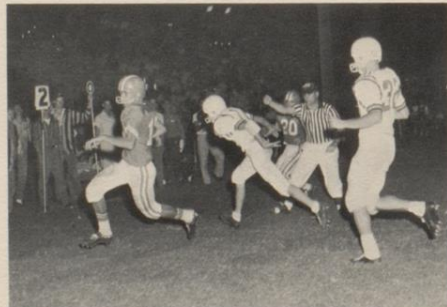
Clinton Ham  
Right Halfback  
Lettered two years



Erasmo Rojas  
Fullback  
Lettered one year



Beaver Rider  
Right Halfback  
Lettered two years

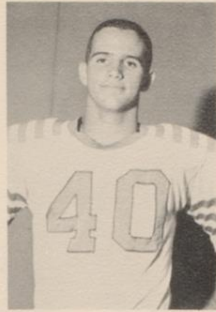


Hickman tallies against Marshall of S. A.

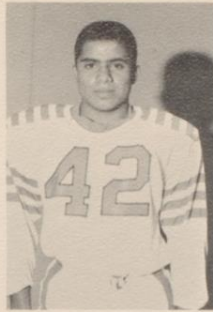


Hinderman scores against Cuero.

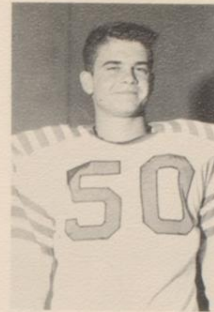




Jimmy Turnipseede  
Left Halfback  
Lettered three years  
All District  
Captain



Joe Gonzales  
Left Halfback  
Lettered one year



Jody Ramirez  
Center  
Lettered one year



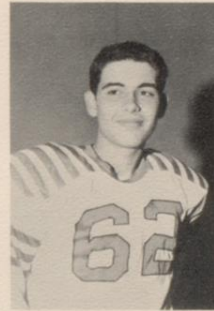
Paul Spikes  
Center  
Lettered one year



Mike Sturm  
Center  
Lettered two years



Bacilio Saucedo  
Guard  
Lettered two years  
All District



George Brin  
Guard  
Lettered one year



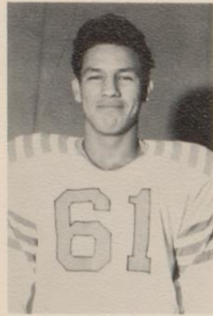
Javier De Anda  
Guard  
Lettered one year



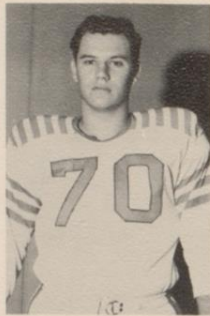
Another TD by Erasmus against Marshall



Turnipseede gains against Gobblers



Refugio Alonzo  
Guard  
Lettered one year



Eddie Dozier  
Tackle  
Lettered one year



Larry Hunter  
Tackle  
Lettered one year  
All District



Margarito Perez  
Tackle  
Lettered two years



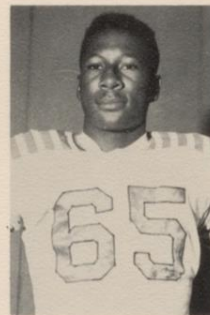
Jimmy Tanner  
Tackle  
Lettered one year



Daniel Vargas  
Tackle  
Lettered one year  
All District



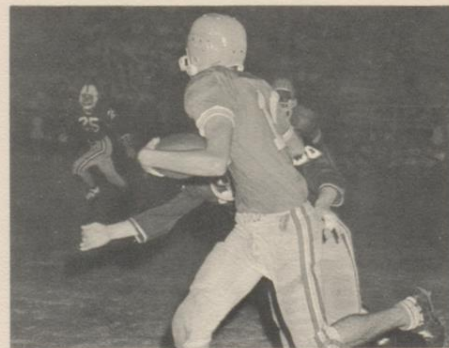
Crayton Hunter  
End  
Lettered one year



Kenneth Hinderman  
End  
Lettered two years



Bob Clarke reaching for a pass in the Robstown game.

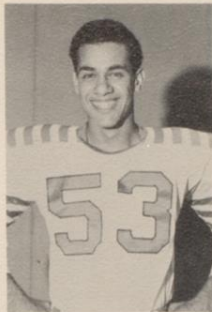


Vanderhule paces the Pirates.





Pilar DeLeon  
End  
Lettered two years  
All District  
Captain



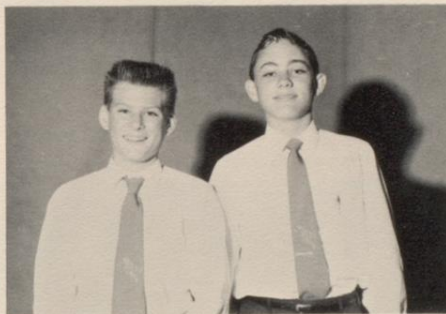
Henry Ramirez  
End  
Lettered two years



Monte Dickinson  
End  
Lettered one year



Sam Tharp  
End  
Lettered one year



Pat Wells, Manager & Tom McPherson, Trainer



Tell 'em about it, Coach



Medina gets hold of a pass against Sinton Pirates



"B" TEAM

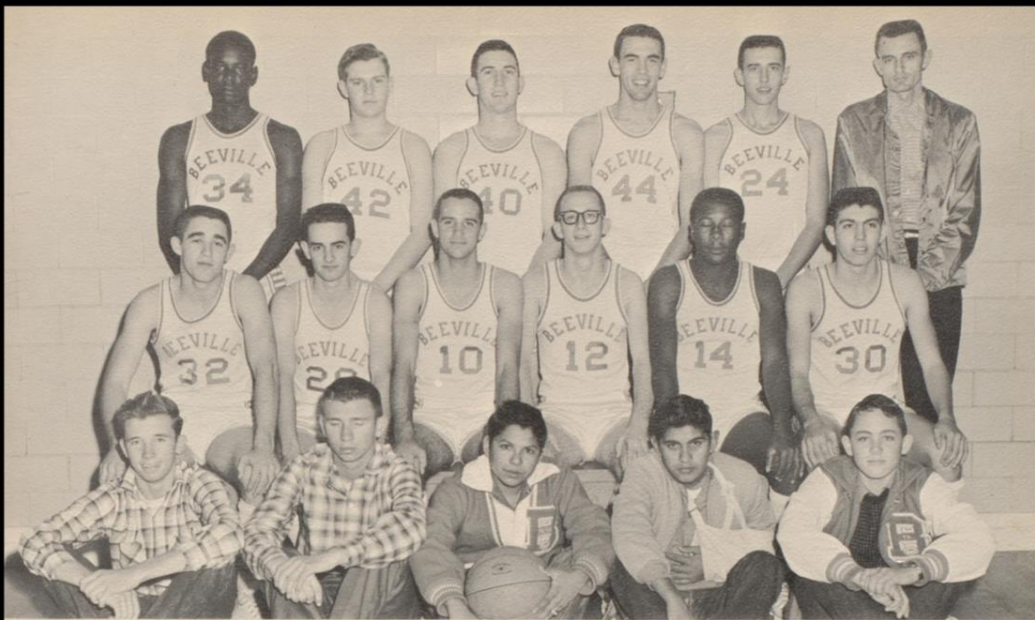
Left to Right, 1st Row: Robert Douglas, Bitty Huegler, Robert Dallas, Paul Gonzales, Reyes Garcia, Robert Berry; 2nd Row: Billy Hester, Ricky Glenzer, Richard McCloud, Donald Blachly, Glenn Dunn, Mac Workman, Robbie Dunn; 3rd Row: Bryon Nelson, Michael Dillingham, Johnny Rider, Richard Young, Ronald Moore, R. G. Callas, Arnold Ratchford, Joe Orchard; 4th Row: Mike Wooten, Bill Senseman, Hollis McKinney, C. B. Trial, Chipper Tolliver, Charles Pogue, Jimmy Swift, Gary Chatam, Ronald Gordon, Bill Herman.



FRESHMAN TEAM

Left to Right, 1st Row: Franklin Taylor, Rabb Wyatt, Bobby Routh, Bob McCloud, Richard Zander, Coach Vernon Ullman; 2nd Row: Corky Trilica, Rocendo Garcia, Eloy Rodriguez, Rudy Blakely, Mike Garcia, Victor Salazar, Frank Castro; 3rd Row: Robert Parker, Larry Huegler, Bobby Lothringer, Jody Council, Wylie McMahon, Kenneth Odenwelder, Ronnie McCraig; 4th Row: James Mericle, Robert Bohmfalk, Jimmy Amen, Johnny Spikes, Robert Amen, Allen Rothlisberger, Edward Canada





"A" Squad: Standing L to R, Julius Farris; Jimmy Tanner; Fred Cox; Bob Vanderhule; Claude Gotthardt, and Coach Don Scott. Middle Row: Beaver Rider; John Nowlin; Jimmy Turnipseede; Ralph Davis; Dean Hinderman; and Gerald Garcia. Seated: Monte Dickinson; Joel Case; Paul Santellana, Manager; Domingo Trevino and Tom McPherson, Mgrs.

BASKETBALL 1960-61

Won 21 - Lost 7	Tied for 2nd pl District	
Beeville 68	Mathis 24	
Beeville 52	South San Antonio 75	
Beeville 56	Boerne 58	) So. San.
Beeville 78	Seguin 45	) Tourney
Beeville 74	Bracketville 60	) won
Beeville 50	Baytown 58	) Consola-
Beeville 66	George West 39	) tion
Beeville 66	Kenedy 42	
Beeville 42	George West 39	
Beeville 62	San Diego 40	) Taft Tourney
Beeville 58	Tuloso Midway 40	) won
Beeville 60	Freer 45	) First Place
Beeville 61	Mathis 33	
Beeville 80	Yorktown 31	) Trojan Cage
Beeville 86	Pettus 45	) Classic
Beeville 66	Cuero 42	) won
Beeville 47	Kingsville 57	) Second Place
Beeville 62	Robstown 66	
Beeville 69	Port Lavaca 35	
Beeville 66	Aransas Pass 49	
Beeville 68	Cuero 38	
Beeville 80	Kingsville 63	
Beeville 77	Robstown 78	
Beeville 91	Port Lavaca 36	
Beeville 60	Aransas Pass 52	
Beeville 75	Cuero 48	
Beeville 69	Kingsville 71	
Beeville 70	Chase Field 62	

CO-CAPTAINS: Fred Cox & Claude Gotthardt

ALL TOURNEY TEAMS:

So. San: Fred Cox  
 Taft: Bob Vanderhule & Fred Cox  
 Beeville: Bob Vanderhule

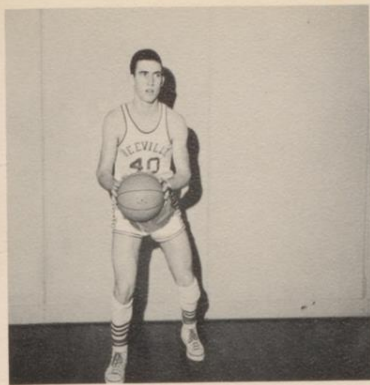


Patsy Turnipseede, Princess; Carol Yount, Sweetheart; and Janet Taylor, Princess

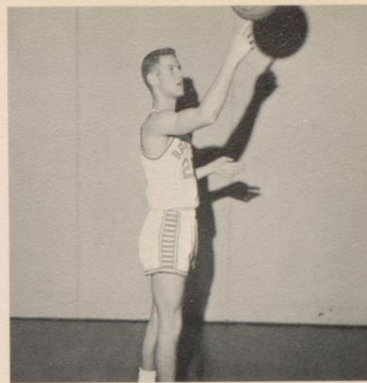


BASKETBALL SWEETHEART Carol Yount





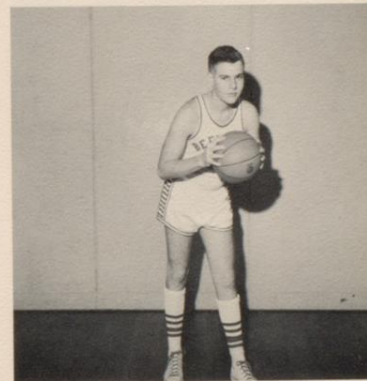
FRED COX  
Forward  
Two Years



BOB CLARK  
Guard  
Two Years



GERALD GARCIA  
Forward  
Two Years



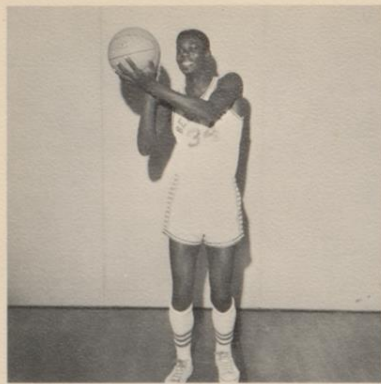
JIMMY TANNER  
Center  
One Year



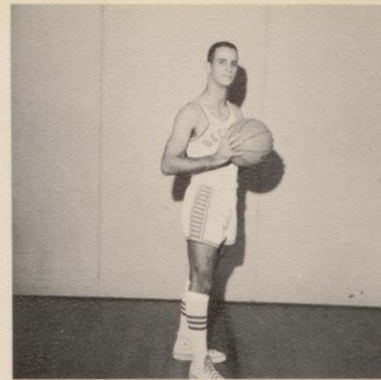
Vanderhule scores against Yorktown



Nowlin baffles the Brahmas



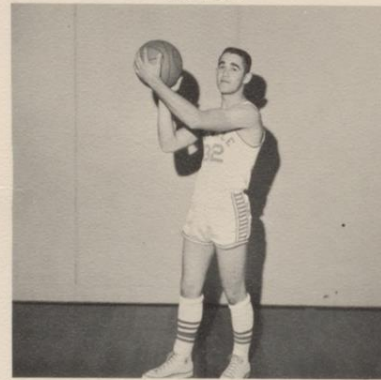
JULIUS FARRIS  
Center  
One Year



JIMMY TURNIPSEEDE  
Guard  
Two Years



MONTE DICKINSON  
Guard  
One Year



BEAVER RIDER  
Guard  
Two Years



158 Keep your cotton pickin hands off our ball

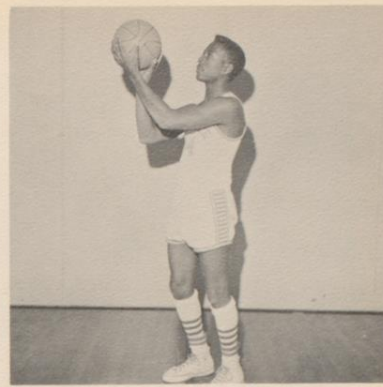


Gotthardt robs Eagle's Nest

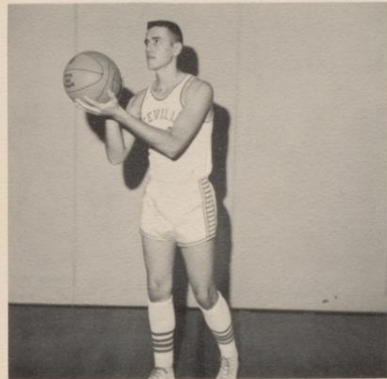




JOHN NOWLIN  
Guard  
Two Years



KENNETH HINDERMAN  
Forward  
Two Years



CLAUDE GOTTHARDT  
Center  
Two Years



RALPH DAVIS  
Guard  
One Year



Trojans receive trophy at our cage classic



BOB VANDERHULE  
Center  
One Year

# BASKETBALL



"B" TEAM

Left to Right, Front Row: Richard McLeod, Robert Guererro, R. C. Callis, Ricky Glenzer, Don Blachley, Johnny Rider, Refugio Alonzo; Second Row: Glenn Dunn, Erasmo Rojas, Pete Saldivar, James Glick, Joe Orchard, Sonny Hickman, Crayton Hunter, James Martin

FRESHMEN



Kneeling, L to R: Robbie Aman, Franklin Taylor, Timmy Rider, Jody Council, Eloy Rodriguez, Robert Parker, Corky Trlica. Standing, L to R: Coach Vernon Ullman, Bob McLeod, Jimmy Aman, Mike Walker, Rabb Wyatt, Johnny Spikes, and Bobby Routh



# The Balance Sheet®



Business Students Put  
Their Learning Into  
Practice on the Job

A  
D  
S



## ATHEY'S



BEEVILLE'S EXCLUSIVE DEALER IN THE "JEEP" FAMILY  
OF 4-WHEEL-DRIVE VEHICLES

Mercury Outboard Motors

Authorized G.M.C. Dealer

411 South Washington

## ADAIR WHOLESALE COMPANY



Wholesale Candies & Tobaccos  
Distributors – Vending Machines



## AMERICAN CAFE

EARL & SMITTY'S



214 North Washington  
Phone FL 8-4288

## B. A. BOX

FL 8-1984

P. O. BOX 547



Bolted Steel Tanks  
Welded Tanks  
Grain Tanks

Tanks Repaired & Painted  
Lease Crew Service

## BALLARD DRUG STORE



*Service is our Specialty*  
Free Home Delivery  
DRUGS, CAMERA, COSMETICS & GIFTS  
203 North Washington

# BEE COUNTY LIVESTOCK AUCTION



TOP MARKET PRICES FOR ALL LIVESTOCK

CLYDE HERBERT, Owner

*Corpus Christi Highway*

## BEE MOTORS, Inc.

Oldsmobile, Rambler, Jaguar & M. G.

403 North Washington  
Across from Kohler Hotel  
FL 8-1962



## BURROWS HARDWARE COMPANY



325 North Washington

Phone FL 8-2301



# BEEVILLE PUBLISHING CO., INC.

*Home of the Bee Picayune*

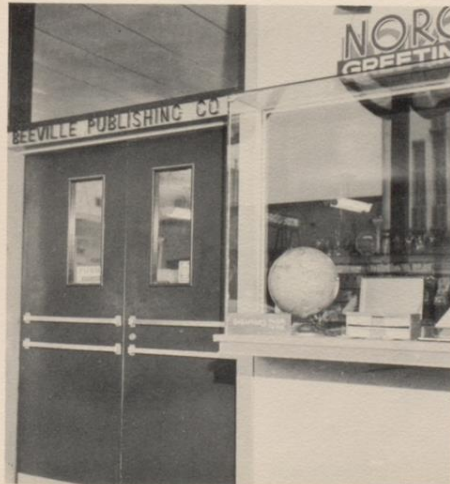


## OFFICE FURNITURE & FIXTURES

Stationery Supplies

Royal Typewriters

Norcross Greeting Cards



*Calloway's*  
**BEEVILLE  
STUDIO**

111 S. St. Mary's Street  
FL 8-1626



**Beeville Boot Shop**

CUSTOM LEATHER PRODUCTS  
SHOE REPAIRS  
117½ North Washington

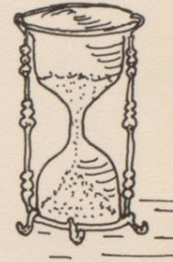


## Don't Wait too Long!

It's dangerous to delay a planned program of insurance. The younger you are, the more likely you are to qualify . . . and the less it will cost. Call me today and discuss a plan that will protect you and your family — both now and in the future.

MALCOLM G. SLAY — Life Insurance needs placed with several outstanding companies.

I represent you, the client.



Malcolm G. Slay  
P. O. Box 1009  
208 W. Bowie Street  
FL 8-1255

## BEE-TEX REAL ESTATE

LIFE • ACCIDENT • HEALTH • HOSPITALIZATION • GROUP



## BONHAM'S

100 West Huntington

Dial FL 8-3771

# CAIN'S

Dining Room and Curb Service

Chicken, Steak & Fish



501 SOUTH WASHINGTON  
*Open for Breakfast at 5:30 A. M.*  
*Try our Texas-Style Toast*



## CONOLY DRUG STORE

Prescriptions  
Fast City-wide Delivery  
Complete Camera Headquarters  
Your Family Walgreen Store  
Dark Room Service Free  
Dial FL 8-4515

COSMETICS TOYS CANDY



Highway 181 North

FL 8-4451

## ESQUIRE MOTEL

*Duncan Hines Approved*

Member — The Best Western Motels



WORLD'S FINEST

ALL VARIETIES

We cater to Parties — Cafes, Churches  
Organizations Lodges

1500 North Washington

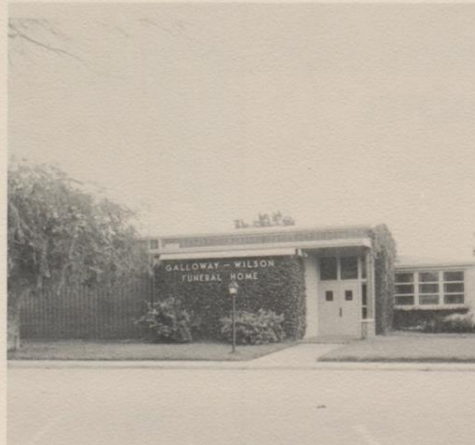
## RUTH DAVIS



Junior Fashions a Specialty

Located at Adams & Corpus Christi  
Streets

## GALLOWAY-WILSON FUNERAL DIRECTORS



409 North Tyler

Dial FL 8-2512



## Mergele Jewelers

*"Gifts of Lasting Distinction"*

WATCHES

SILVER

COSTUME JEWELRY

Watch & Jewelry Repairing

Use Your Credit

*"We Are Beeville's Only Diamond Importers"*

## HARDY MOTORS

*"Your Friendly Dodge & Plymouth Dealer"*



Prompt Wrecker Service — Body Repair

Your Home Away From Home



## Hotel Kohler

*"Where the Guest is Always King"*

# Central Power And Light Co.



Planning to Remodel, Build, or Add New Electric Appliances?  
Be Sure Your Electric Wiring Will Efficiently Carry the Load  
Consult your Electric Contractor or Architect

124 North Washington

FL 8-3628



## HAUSE & HALL MEN'S WEAR

204 North Washington  
FL 8-4575

Complete Wearing Apparel for Every Man

## H. E. B. FOOD STORES

Corner of St. Mary's & Bowie



FINE FOODS FROM ALL OVER THE WORLD

## NEWSOM'S

609 South Washington      FL 8-1471

INTERNATIONAL FARM IMPLEMENTS

Sales — Service — Parts



RCA WHIRLPOOL AIR CONDITIONERS

Dependable Trouble-free Service

# J. C. PENNEY COMPANY



Clothiers for the Entire Family  
Up-to-date Fashions at Reasonable Prices

For Jewelry  
it's  
FIZER'S  
of course

211 North Washington

**Fizer's Jewelry**

# A. A. HUEGLER & SONS



701 North Ave. D

FL 8-3646



A GOOD BANK TO BE WITH



# COMMERCIAL NATIONAL BANK

Since 1893

*CONGRATULATIONS, SENIORS*

Highest Rate of Interest  
paid on Saving Accounts

A United States  
Government Depository

## K N ROOT BEER

DRIVE IN



1708 N. St. Mary's  
FL 8-5678  
Joe & Joyce Hughes

## Louise's Little Shop



Antiques & Exotic Gifts  
San Antonio Highway

## REYNOLDS MOTOR SALES

See us before you Buy or Sell

Terms or Cash



BEST BUYS IN TOWN IN NEW & USED CARS  
South Washington Street



# ROBERTS & MCKENZIE HARDWARE COMPANY



400 South Washington

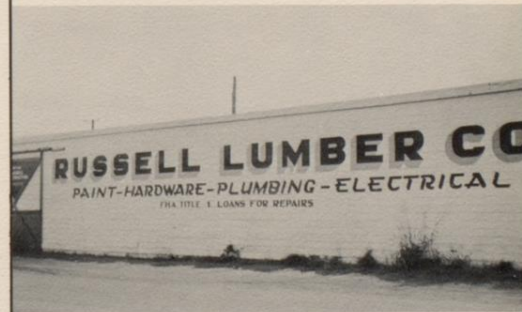
Dial FL 8-2711

## KNIGHT INSURANCE AGENCY



Fire & Extended Coverage — Casualty —  
Automobile — Health & Accident — Life  
STATE BANK BUILDING

## RUSSELL LUMBER COMPANY



Call FL 8-1747 for Money Saving Prices  
Lumber & Building Materials  
Large & Small Orders

# HALL'S



205 North Washington

FL 8-3346





### WESTERN AUTO ASSOCIATE STORE

317 N. Washington

FL 8-3864

### MORENO PHARMACY



FAST FREE DELIVERY

*"The Future of America Depends on the  
Babies of Tomorrow"*

A. A. Moreno, Jr., Pharmacist & Prop.

### STATE BANK & TRUST COMPANY

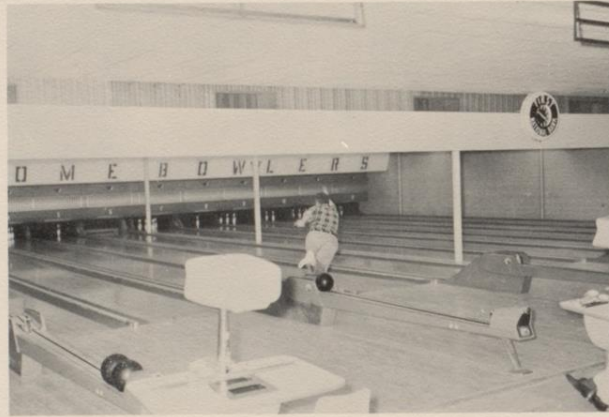


A Welcome to New Neighbors. We hope you will form many lasting friendships in this community . . . . .  
You will find our friendly bank always ready and willing to help you with your money matters. Stop in soon and get acquainted.

# NORTHSIDE BOWLING LANES, INC.

North on San Antonio Highway

Dial FI 8-5959



"BOWLING FUN FOR EVERYONE"



# THE PARISIAN

Distinctive Apparel for the Well-Groomed Woman  
*Come in and make your selections from our Famous-Name Brands*

---

## ZIMMER FLORAL & NURSERY

Offering a Complete Floral Service  
WE DELIVER

North on the San Antonio Highway

Florists' Telegraph Delivery

# Carrie J. Wright & Co.

## INSURANCE

GERALD M. WORKMAN, Agent

P. O. Box 791

Phone FL 8-2412

*"Fifty-nine Years in Business and Never a Contested Claim"*

---

# CITY DRUGS

Serving Bee County Since 1921

FOUNTAIN SERVICE

Prompt Delivery Service

KING CANDIES





## HOME FURNITURE COMPANY

The Finest of Fine Furniture  
"Easy-Pay Plan"



## WHITE AUTO

Nationally Advertised Brands

Tools

Toys



Lot-O-Meat  
Giant Malts & Shakes  
Call us First  
Then Pick it Up  
1502 NE Washington

## GIANTBURGER



## Hall Industries Theatres, Inc.

**Bronco Drive In**

San Antonio Highway

**Rialto**

Downtown on Washington

## Schulz Pharmacy

*"Bring us your prescriptions or ask your Doctor to call them in"*



122 North Washington

Paul Schulz, *Owner*

Tommie Wroten, *Pharmacist*



## KING BEE RESTAURANT

"Specializing in Home Cooked Food"



FEATURING SUNDAY &  
HOLIDAY DINNERS

## NORRIS W. RIDER INSURANCE SERVICE

Personal Insurance  
LIFE — HOSPITAL — ACCIDENT  
MORTGAGE — SAVINGS  
"Your Insurance Friend"

FL 8-3341

Real Estate

FL 8-3543

Rentals

Come in today  
and see our wide  
selections of Home  
Furnishings and  
Household Appliances



## Guarantee Furniture & Appliance Company

Corpus Christi Highway

FL 8-1636

# Joe's Motor Sales

**BUICK**

**CHEVROLET**

**PONTIAC**

Authorized Sales & Service



Body, Fender & Frame Work

Painting and Wrecker Service

Brake Service, Wheel Aligning & Motor Tune-up

301 S. WASHINGTON

DIAL FL 8-1681



COMPLIMENTS OF



## ROYAL FURNITURE COMPANY

COMPLETE HOME FURNISHINGS

303 N. St. Mary's

Bill Jaegli, Owner

## FIRST FEDERAL SAVINGS & LOAN ASS'N. of Beeville



Real Estate Loans for Home, Remodeling,  
Repairing, New Construction, Refinancing

417 N. Washington

FL 8-4294

## GEISLER'S FOOD STORE

317 North St. Mary's

FL 8-3710

Fine Foods at Low Prices  
Complete Grocery, Meat & Produce  
Departments  
Delivery Service



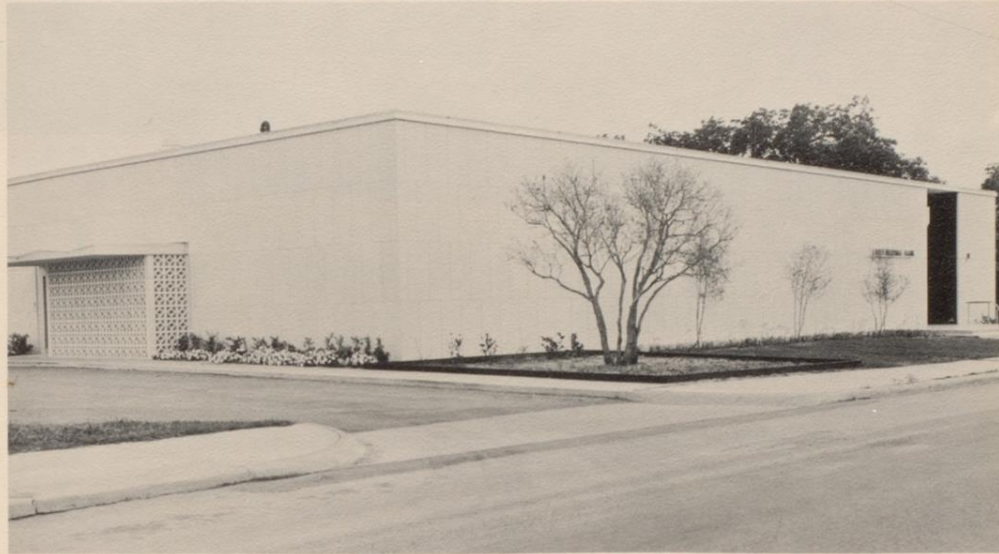
Compliments of  
**THE BOOSTERS LISTED BELOW**



BEAUTY BOX	JERRY'S GLAMOUR NOOK
CHESTER'S AUTO PARTS	NORRIS RADIATOR SHOP
DAIRY QUEEN	PALACE BEAUTY SHOP
FABRIC SHOP	THE TOT SHOP
L. D. HUNTER BUTANE	YOUNG AUTO COMPANY
DR. A. A. NELSON, CHIROPRACTOR	



# FIRST NATIONAL BANK



The Dependable Bank — Est. 1890

FL-8-1530

111 E. Corpus Christi

George A. Ray Jr., *President*  
B. W. Adams, *Executive Vice President*  
J. T. Ballard, *Vice President*  
H. B. Hause, *Vice President*  
Ned Everett, *Vice President*  
H. H. Laechelin Jr., *Cashier*  
Norman L. Jostes, *Asst. Cashier*  
(Mrs.) Margaret Davis, *Asst. Cashier*

MEMBER FEDERAL DEPOSIT  
INSURANCE CORP.

\$750,000.00 CAPITAL-SURPLUS-  
PROFITS-RESERVES

## Beeville Feed & Seed Co.



### NUTRENA FEEDS

Field — Garden & Flower Seeds  
Livestock & Poultry Supplies

410 N. St. Mary's

FL 8-2731



## HERMES TRANSFER

*Representing Red Arrow Freight Lines*

Established 1898

*Local & Long Distance Moving  
Night Calls*

*"Your Best Move"*

## Paul Spikes & Son

### PURINA CHOWS

1007 S. Washington

FL 8-3470

### FEED & SEED HEADQUARTERS

Seed — Fertilizers — Remedies — Supplies





K  
I  
B  
L



1  
4  
9  
0

Serving Bee and surrounding counties with dependable news coverage, points of interest, and fine music.

Refugio Hwy.

FL 8-2197

### MEYER MOTOR PARTS



FL-8-2541                      103 S. St. Mary's  
"Wholesale and Retail"  
Lee R. Meyer, *owner*              Beeville, Tex.

### GRANT LUMBER COMPANY OF BEEVILLE



"QUALITY BUILDING SUPPLIES"  
J. D. Wilson                      John F. Young



**HANCE H. HAMILTON  
Launderer & Cleaner, Inc.**

*"Drive In Service"*  
*Insured Fur & Garment Storage*  
*Ample Parking Space*  
 108 N. St. Mary's  
*Across the Street from the Post Office*  
*"Let One Call do it All"*

**ALANIZ &  
PEREZ  
GARAGE**

General Auto  
Repairs  
711 S. Washington  
FL 8-2318



Brake Service  
Body & Fender  
Work  
Complete Tune-up  
Service

**THE BOOTERY**



*"Shoes for the Entire Family"*

Jarman for Men  
 Naturalizer — Jacqueline and Connie for Women  
 Robin Hood for Children

216 North Washington

Phone FL 8-2448





**DUNN BROS.  
CONSTRUCTION COMPANY**

Airport Road

FL 8-1949



**C. R. ANTHONY  
& COMPANY**

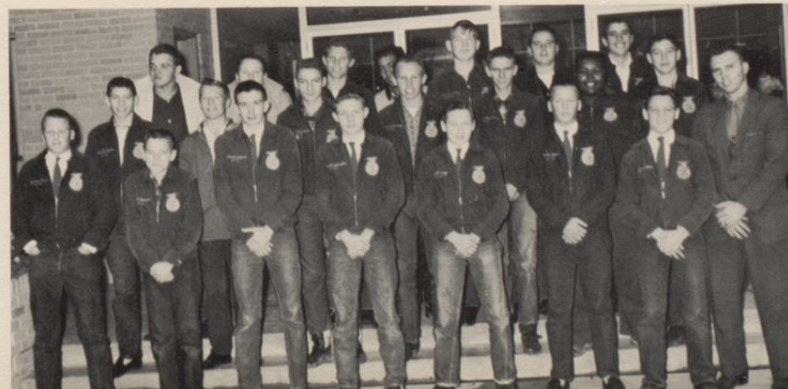
CLOTHES FOR THE ENTIRE FAMILY

*"Fashion with a Flair"*

**BOOSTERS**

**CITY CLEANERS  
BUDGIE'S SADDLERY**

**TYPEWRITER SALES & SERVICE  
WISE'S FRUIT STAND  
WASH-O-MAT**





# U.I.L. GOLF TEAM

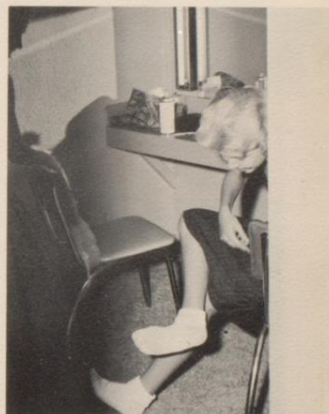
Left to Right: John Beasley, Jim Jackson, George Brin, Jodie Ramirez and Johnny Spikes







THERE ARE ALL KINDS OF SHOTS



NOT ALL OF THEM CANDID





Juniors star in "Time Out for Ginger"

We Cooperate with Paper Personnel



"We didn't Know that it was Loaded .





—1961 Graduates of A.C. Jones High School, Beeville, Texas—

## CLASS OF '61

