
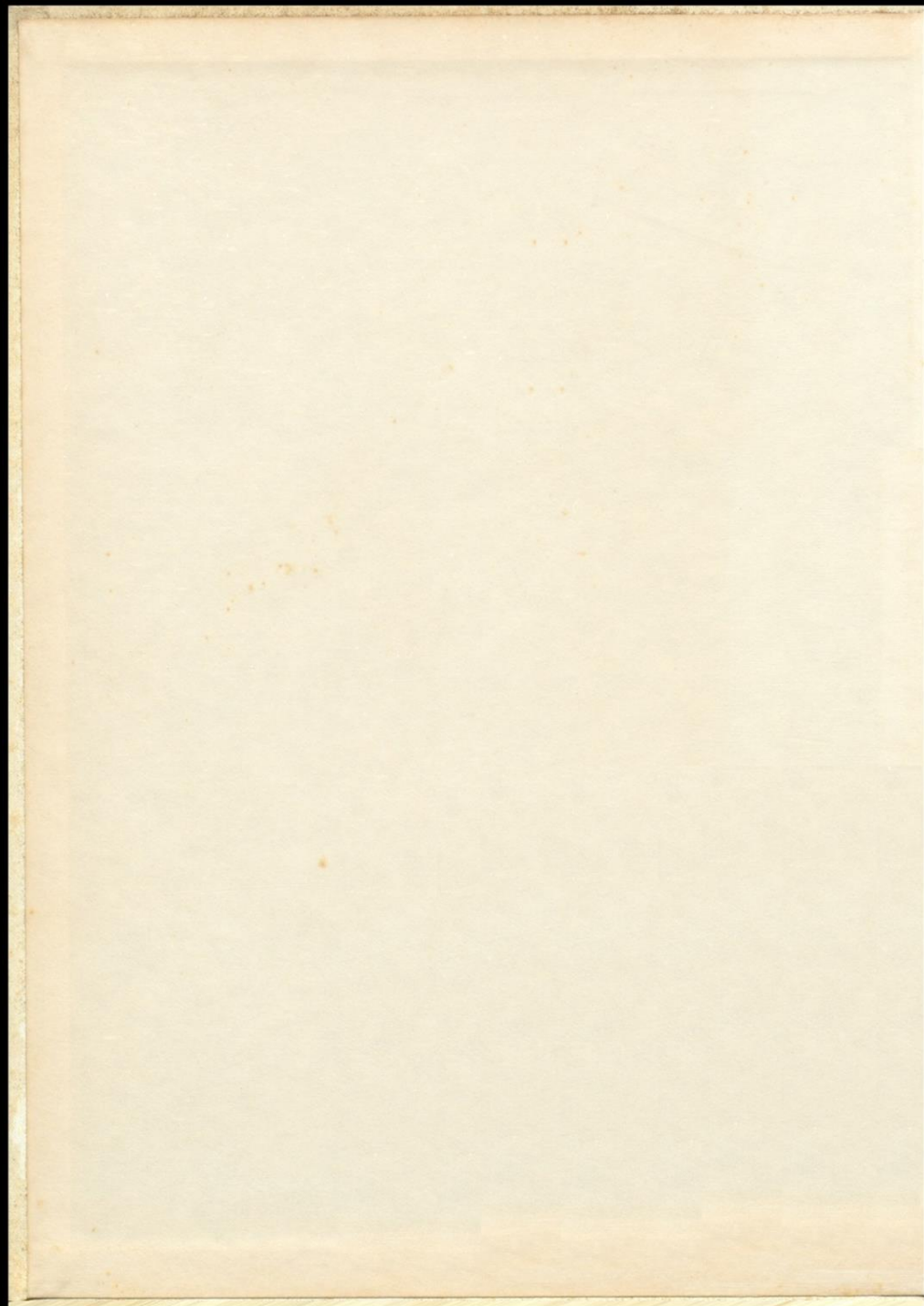
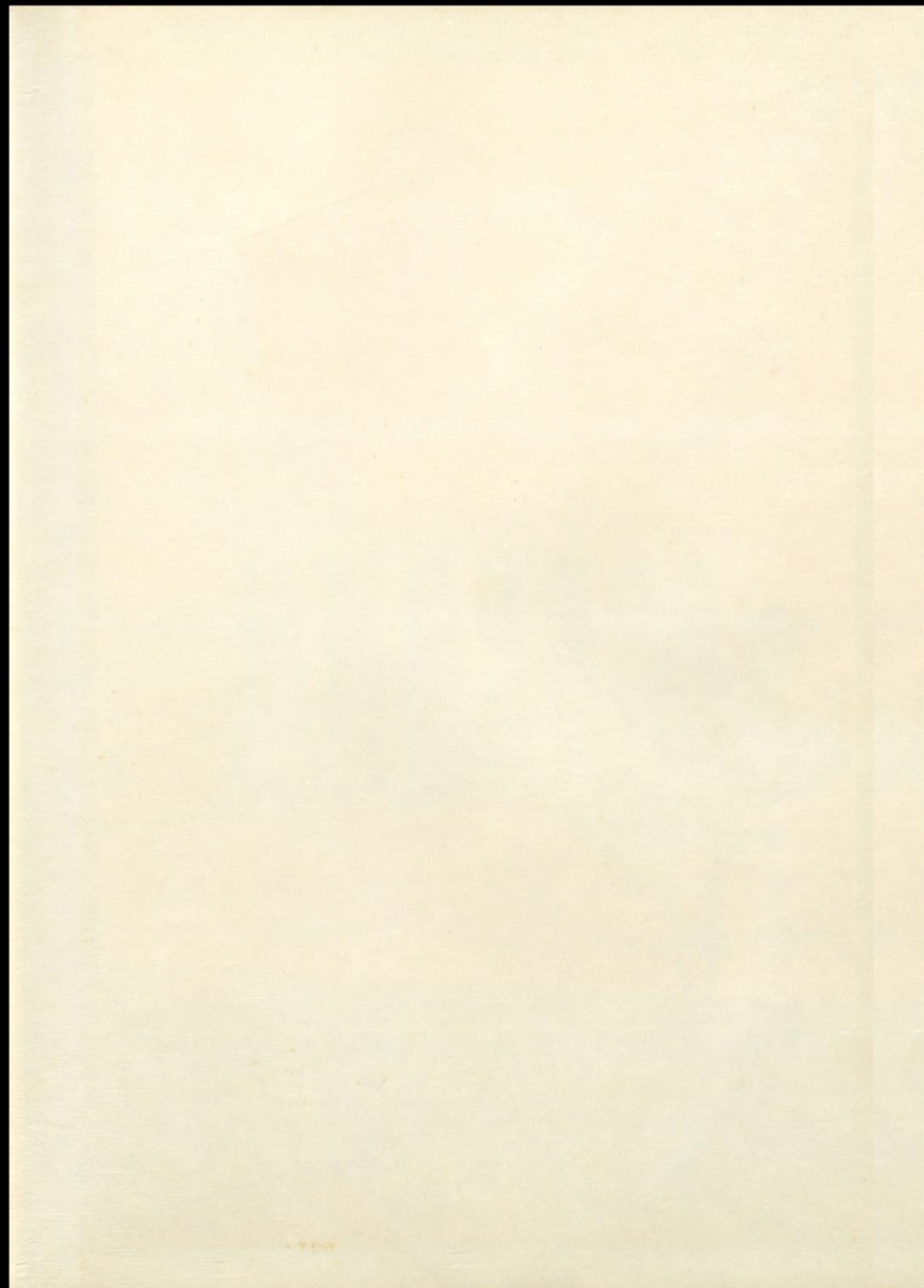
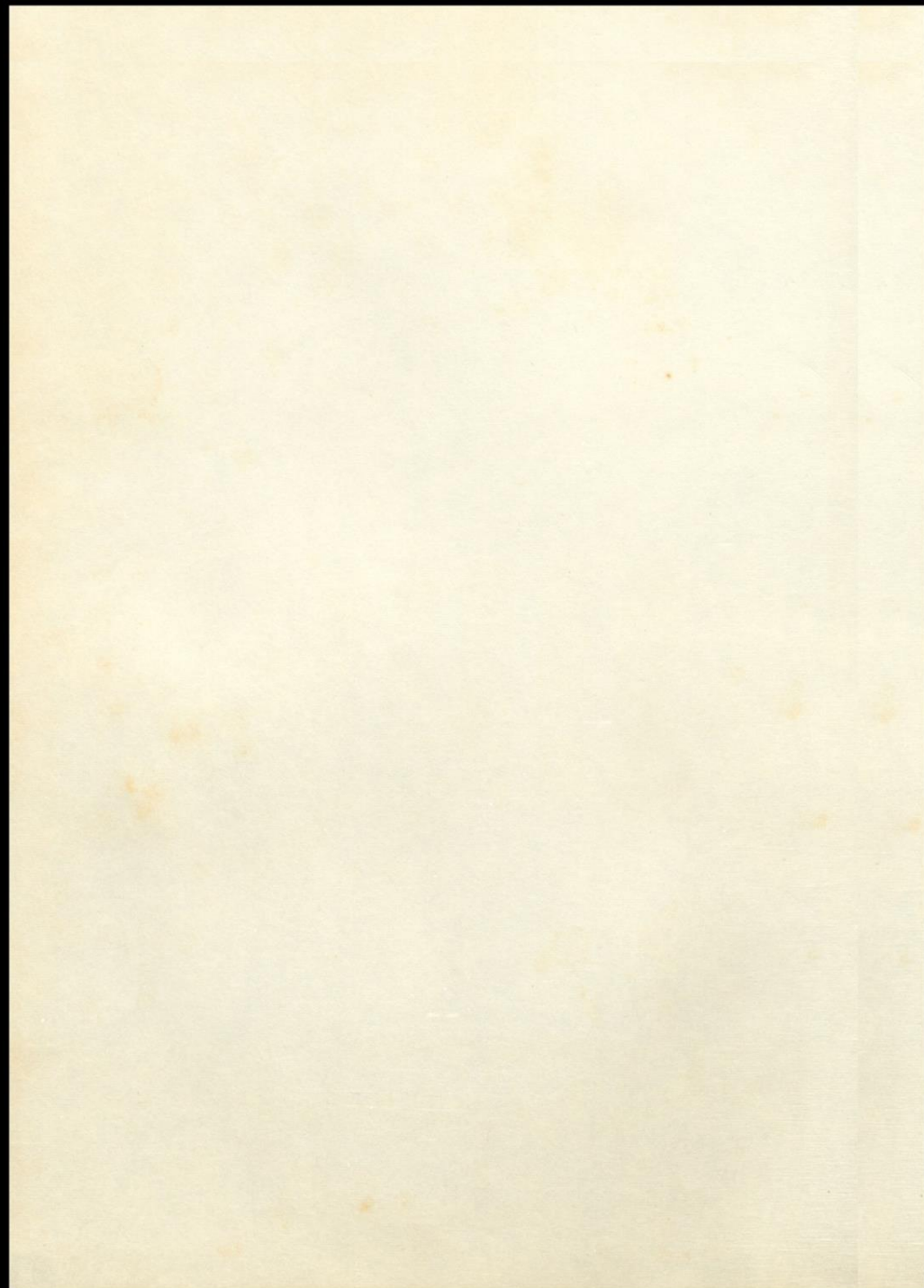


EL CHAPARRAL









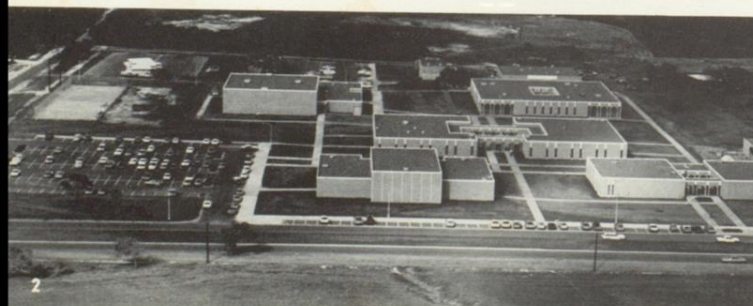


EL CHAPARRAL

Bee County College
Beeville, Texas
Volume III



A college is more than bricks
And mortar
Given substance
And shape
By the handiwork of men,
Or arches
That reach out to touch the sky
And windows
That look upon the land,
Made green
And fragrant
By the cleansing rains of spring.



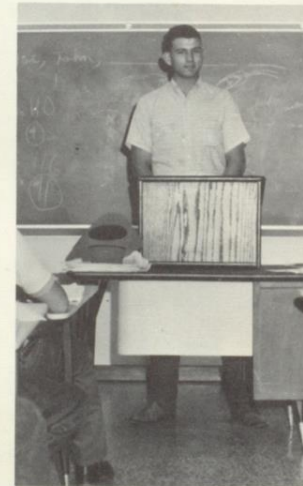


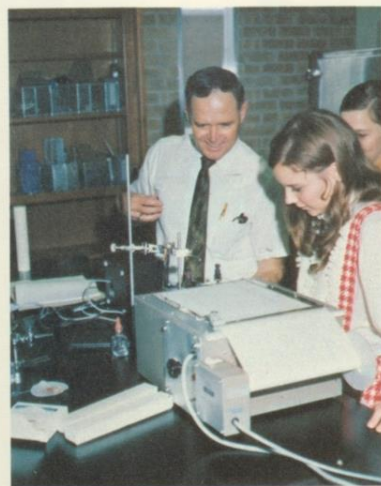
A college is of the people.
And even more,
It is a promise
Of release
From long unbroken chains
Of ignorance
And despair
Of deprivation
And fear.



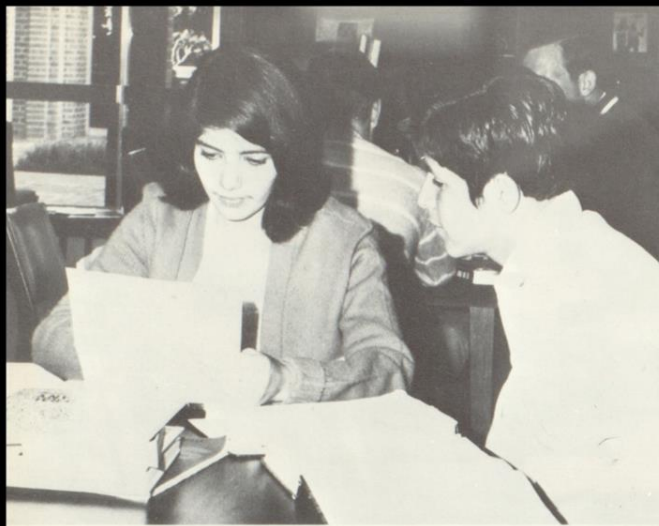
It is a place where some will come
To learn,
And some will come
To be taught,
Never dreaming there is a difference.
Here some will question
And seek what man has always sought—
Knowledge.
Understanding.
Wisdom.
Many will not care.

Some come quietly, timid, afraid—
 Alone.
 Others find sanctuary
 In the security of fellowship,
 Groups.
 They come for the sound old reasons,
 Of family
 And friends,
 Of status
 And ambition,
 Marriage;
 For reasons that fathers never knew;
 The draft
 Viet Nam
 Rising expectations
 The technocracy
 A deep, unsettled feeling
 That something is wrong with the world
 And a yearning to make it whole again.
 Not for themselves alone
 Or even for their children—
 But for their brothers everywhere.





Some will make a commitment
 To life,
 To their fellows,
 To the world.
 They will participate and be active
 Creating currents
 That will change the world—
 And make it theirs.
 Others will seek contemplation
 And scholarship,
 Initiating ideas
 That will make the world over—
 And make it ours.
 Too many will be the silent majority
 Who will never know the joy
 Of involvement.



And so they come
To study and learn,
To think
To work and play—
To prepare.
To provide a nation,
And a world,
With hope.

—Bruce Gray
December, 1969





Administration — Faculty



President
Grady C. Hogue

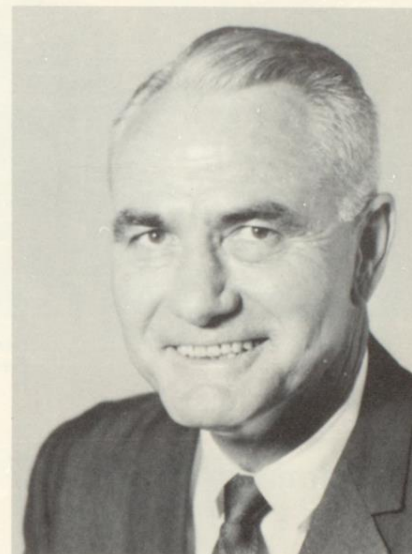
**Board of
Trustees**



Standing (l-r): Paul Schulz, Peter S. Maracek, Frank Jostes, Fred Latcham. Seated (l-r): Jessy Garza, Robert Beasley, President Hogue. Not pictured: George Spikes.



Dr. Thomas Spencer
Dean of the Faculty



Scott Russell
Dean, Technical—Vocational
Education



George F. Elam
Dean of Student Services



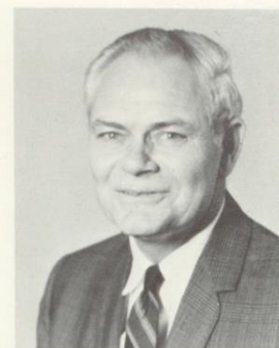
Roy Benton
Dean of Fiscal Affairs



Douglas A. Green
Librarian



Henry Price
Physical Plant Director



N. B. Tanner
Registrar

Administrative Staff



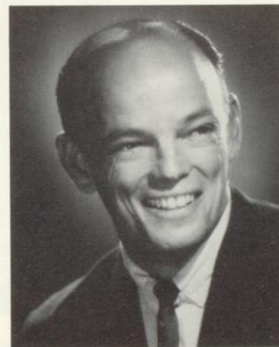
In the fall of 1969, the Bee County College Library marked the cataloging of its 10,000th volume.



Helen Y. Tien
Media Specialist



Amos Welder, Jr.
Student Union Manager



Allan Ramsey
Director of Information



Jim Campbell
Athletic Director

Counseling Service



John Henshali



Margaret Mullins

Division of Language

Spanish
French
English
Composition and Rhetoric
Literature
Journalism



Betty Bleeker
Division Chairman
English



Louis Bolieu, Jr.
English



Kay Calaway
English



Marjorie Huff
English



Ruth McNair
English



Norman G. Damerou
Spanish, French



Shirley L. Kibler
Art



Anita C. Krueger
Music



Waverly Lewis
Art

Division of Fine Arts

Art
Music
Drama



Everett McAulay
Division Chairman
Music



Simon Michael
Art



Paul Wilmoth
Drama, Speech

Division of Science and Mathematics

Biology
Chemistry
Mathematics
Physics
Agriculture



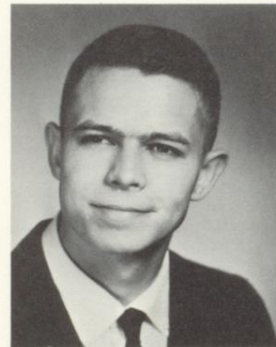
Henry Lucke
Division Chairman
Biology



Genelle Bell
Mathematics



George S. Duffy
Chemistry Laboratory



Jimmie Edwards
Biology Laboratory



Don L. Lewis
Mathematics, Physics



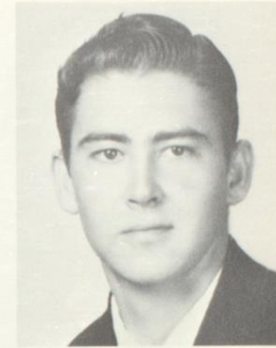
John D. McLean
Biology



Joyce Meitzen
Mathematics



William M. Reid
Chemistry



Joe E. Schmid
Agriculture

Division of Technical Sciences

Drafting and Design
Electronics



Neal M. McBryde
Division Chairman
Electronics



Ray Schlitzkus
Drafting and Design



Thomas Stephenson
Electronics



Everett E. Van Valkenburg
Drafting and Design



Dr. Gustus A. Dunn, Jr.
Division Chairman

Division of Social Sciences

History
Government
Economics



Elizabeth Hall
Economics, U.S. History,
Government



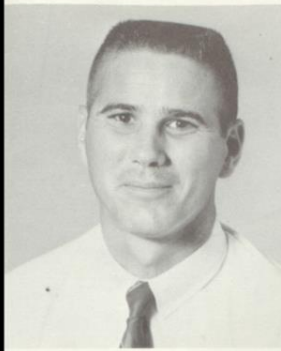
The Scott, Foresman and Company display proved to be an attractive asset when Bee County College hosted the South Texas History Conference. Miss Hall takes time from her busy schedule to visit the display table.



Robert E. Villarreal
Government



August Williams
History



Gayle L. Brogdon
Physical Education



Myrtle Lucke
Division Chairman
Health, Physical Education

Division of Health and Physical Education

Division of Health Sciences

Dental Hygiene
Dental Assisting
Vocational Nursing



Dr. Allen L. Lasiter
Division Chairman
Dental Hygiene



Edna Van Allen
Director of Vocational
Nursing



Division
of
Industrial
Trades

Automotive Mechanics
Building Trades



Rex Smith
Division Chairman
Automotive Mechanics



Robert E. Lee
Building Trades



Richard Williams
Automotive Mechanics



Sid O. Glover
Data Processing



Ann Green
Accounting



Gladys D. Poland
Typing, Business
English

Division of Business

Accounting
Data Processing
Secretarial Arts



Violet I. Shirey
Division Chairman



Nell Macintyre
Shorthand, Business
English



M. H. McKinney, Jr.
Data Processing



Freddie B. Wilmoth
Business



Dovey Lea Fojtik
Library Clerk



Jackie Krueger
Library Clerk



Ruth Wardlaw
Technical Processing
Librarian



Charlene Campbell
Secretary



Mary Freeman
Secretary



Odie Mae McCoy
Secretary



Grace Villarreal
Secretary



Suzanne Wilson
Secretary



Ida Blevins
Cafeteria Staff



Lupe Trigo
Cafeteria Staff



Lydia Villarreal
Cafeteria Staff



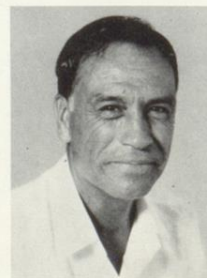
Irma Del Bosque
Custodian



Willy Keller
Custodian



Notis McKenzie
Maintenance



Jesse Mendez
Custodian



Adolfo Villarreal, Sr.
Custodial Supervisor



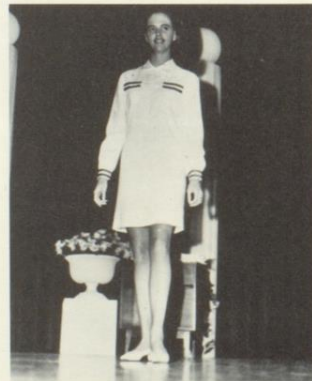
Campus Life

Campus Beauties Are Spot



On the evening of October 18, the stage of the Gertrude Jones Fine Arts Theatre was graced by the presence of 12 young ladies competing for the title of Miss Bee County College. Contestants modeled street and evening ensembles to the background music of the BCC Stage Band and the commentary of Allen Ramsey. Performing before a panel of three judges the contestants were graded on beauty, poise, personality, and talent.

The evening was climaxed by the Student Association's President's Ball which honored the pageant participants and the newly elected Senate who had sponsored the evening's festivities.



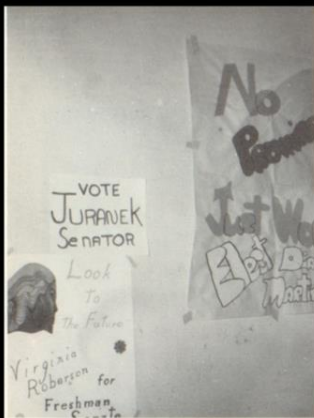
lighted at Miss BCC Pageant



The contestants: **(standing, l-r)** Sheri Lynn Percy, Cathy Daniels, Sherri Kennedy, Barbara Young, Mary Huser, Margaret Ellis, Vera Boldt, and Finalists: **(seated, l-r)** Jan Blair, Joan Miller, Diana Schroedter, Renee Gregory and Petrita Posada.

From the five finalists, Petrita Posada was selected as Second Runner Up, Jan Blair as First Runner Up, and Joan Miller was crowned as the new Miss B.C.C.





Four busy candidates take time out from campaigning to have a picture made.

Enthusiastic Campaigning Marks Senate Elections

Political fever seized the BCC campus at the beginning of October as freshman and sophomore candidates sought election to the sixteen-member Student Senate. Primarily a poster campaign, the candidates ran with no particular program in mind except to represent the needs and desires of all BCC. Following two days of balloting, the newly elected Senators were introduced at a Friday-night dance.



BCC's First Homecoming Features Bonfire, Sweetheart



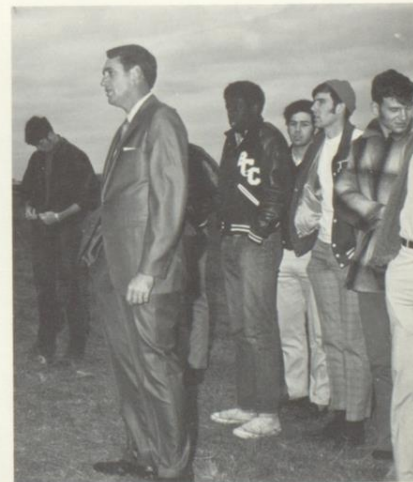
Being a new school means establishing traditions. This year BCC added a new event to its growing list of annual affairs—Homecoming. Although on a small scale for the first year, activities promise to increase as the number of alumni does. A bonfire, built by enthusiastic students, Athletic Sweetheart Dossie Seago, and the Cougar basketball team were the focal points of activity.



Athletic Sweetheart Dossie Seago



Campbell's Cougars—obviously!



Tense Drama and Rollicking

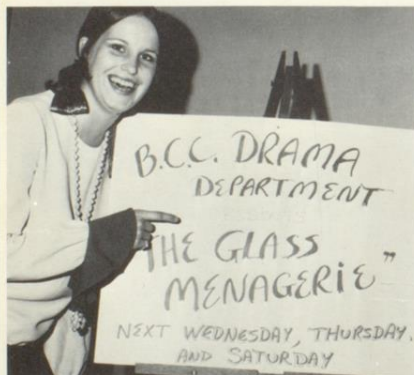


John Massengale, Mina Meines

Cast in the role of Amanda Winfield, an aging southern belle, was Mina Meines. John Massengale and Rosemary Murphy appeared as her son and daughter, and Jim, the gentleman caller, was John Davis.



Weeks of casting, study, and rehearsal were climaxed with the three-day run in October of Tennessee Williams' *The Glass Menagerie*. The play, more delicate and sympathetic than Williams' other plays, depicts an array of burning emotions repressed under a facade of southern gentility.



John Davis, Rosemary Murphy

Comedy Vary Theatrical Fare



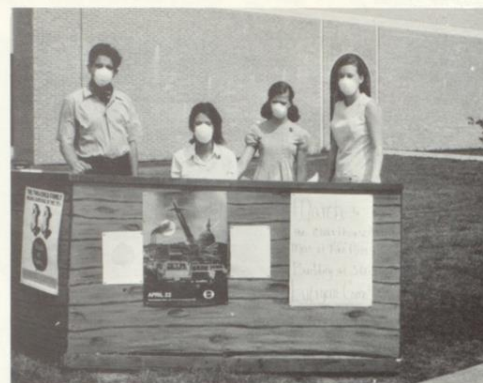
The second production by the BCC Drama Department was the broadly-played comedy, "Law West of the Pecos," an episode from the life of Judge Roy Bean. Featured characters were George Tate as the Judge, John Massengale as fight promoter Dan Stewart, George Farris and Wayne Cowey as the pugilists, Sherri Kennedy as the famous Lily Langtree, "the Jersey Lily," and Lucille Gray as the thief.



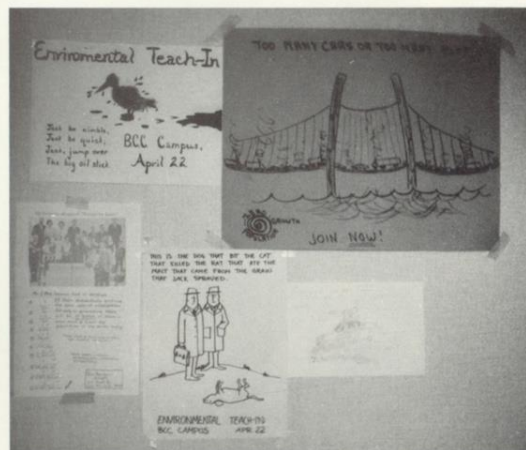
Concerned Students Urge Involvement in Fight to Save Earth



Mary Huser and Anita Thompson, members of Miss Elizabeth Hall's Economics class, were two of the many students who spoke to television audiences via the college's cable channel.



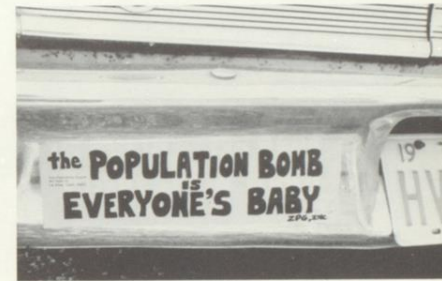
Wearing of gas masks dramatizes the possible consequences of growing air pollution.





In one final effort to draw the community's attention to the problem of pollution, concerned students carried signs and distributed information on a march from the campus to downtown Beeville.

Students at BCC joined college and university students across the country on April 22 to participate in an "Environmental Action" program with emphasis on air, water, people, and insecticide pollutants. A comprehensive program was scheduled at the college. Bumper stickers, posters, and placards went up early to call attention to the purpose of Earth Day. Throughout the day students staffed an information booth, passed out literature depicting various pollution problems, and circulated a petition requesting the U.N. to form a special committee to study pollution problems around the world.

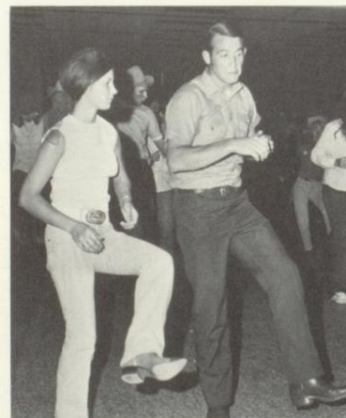
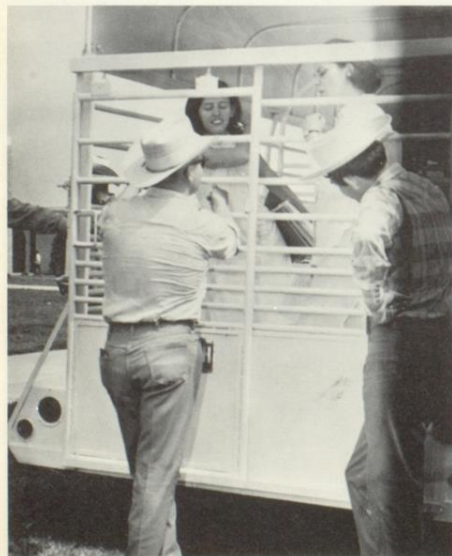




Grady Pat McGill, freshman forestry major, treated spectators to an authentic Indian dance.

BCC Gets Glimpses of Old and New West . . .

There were Indians from the Old West as well as signs of a distinctly modern West found around this campus when the Student Senate sponsored Western Day. Everyone was encouraged to wear their western duds and for the few non-conformists, the Ag Club kept open a jail. Bail was 25¢.



The day was topped off with a dance featuring Al Dean and his All-Stars.

And a Look at the '70's



If Western Day had traces of the old, Gentle Thursday was strictly for today. The dress and the music from two bands which drew crowds to the Student Center all day were as free and comfortable as the '70's.



"OKLAHOMA" Plays to S.R.O. Audiences

The largest production in the three-year history of B.C.C. was staged May 6, 7, 8, and 9, 1970, when the Fine Arts Division presented Rodgers and Hammerstein's "Oklahoma," in the 330 seat Fine Arts Theatre. The principal characters, chorus, dancers, and stage crew were drawn from both college and community. The show was directed by Paul Wilmoth of the Drama Department; Musical Director was Everett McAuley; and the choreography was arranged by Anita Kruger. A large crowd attended the opening performance, but standing-room-only was the vogue for the May 7, 8, and 9 shows. Approximately 1,300 people attended, with a standing ovation ending each performance.

CAST

Characters in order of appearance:

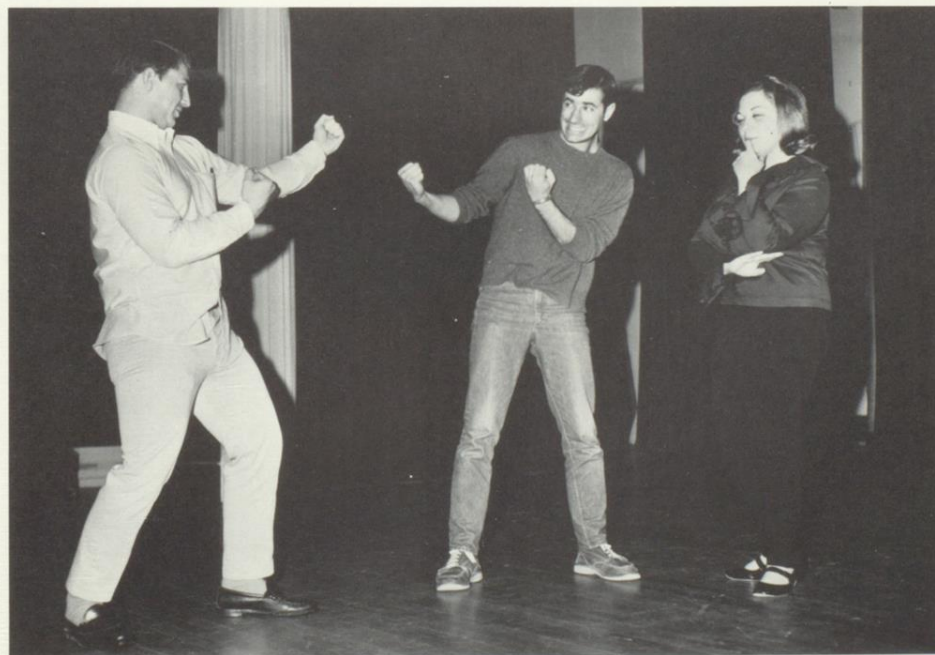
Aunt Eller	Marie Phillips
Curly	Roger DeLaughter
Laurey	Mary Jane Barrientes
Ike Skidmore	Tommy Lott
Slim	Pat Mullins
Will Parker	John Massengale
Fred	Richard Elam
Jud Fry	Charles Galbraith
Ado Annie Carnes	Cathy Hamner
Ali Hakim	Steve Rochkind
Gertie Cummings	Rosemary Murphy
Ellen	Jane Odom
Kate	Cheryl Staples
Andrew Carnes	Pat Juranek
Cord Elam	David Stevenson
Chorus: Mike Mullins, Bob Zoller, Robert Rivera, Hector Cavazos, Jim McDonald, Celso Salinas, Emilio Muniz, Rory Lowe, Kenneth Steffens, Ray Brown, Larry West, Jenny Schwierzke, Ruthie Blaschke, Cathy Coombs, Mona Miller, Genevieve Vasquez, Mary Ham, Diana Martinez, Cookie Longoria, Mona Jonischkies, Georgeanna Campbell, Beatrice Lozano, Elvia Salazar, Karen Wolff, Patricia Crawford, Petrita Posada, Sherri Kennedy, Baudelia Lopez.	



Aunt Eller gives Jud, the hired hand, a piece of her mind.



Will Parker and Ali Hickim prepare to do battle for the hand of Ado Annie.



Oklahoma . . .



Will Parker attempts to persuade Ado Annie that with him it is "All er Nuthin'."



The "Orchestra" was composed of Mr. McAuley and Mrs. Krueger at the pianos and student Joe Vorsas on drums.



All ends well for Curly and Laurey.

Surprises Label Campaigns



Vice-presidential candidate Diana Martínez and supporters.



The 1970 Student Association presidential election was characterized by an unusual amount of interest, activity, and controversy. A total of 431 votes were cast for three presidential and two vice presidential candidates. Alice Gray and write-in candidate Joe Herrera polled the highest number of votes for president in the primary election, but before a run-off could be held, candidate Ginny Roberson contested the election on the grounds of the unconstitutionality of a write-in. The matter was put before the Supreme Court which declared the election void. Under new, more specific rules, a new election made Joe Herrera president, and Diana Martínez vice-president, for 1970-1971.



Supreme Court hearings on the contested election.



Spring Dance Honors Favorites



Beverly Besancon was chosen as the campus' favorite girl. Grady Pat McGuill, boy Campus Favorite, was unable to attend the dance.



This is one group of Club Sweethearts who were introduced and honored at the dance.



This year's dance was unique in that two bands—the Grapple and the Satin Glows—alternated in providing music throughout the evening. Jointly sponsored by Los Conquistadors and the Student Senate, two bands and a greater variety of music succeeded in drawing one of the largest crowds to come out to a campus dance.

The Favorites Dance is one of several spring events which is becoming an annual event on campus. Following a week of campus-wide elections, the winners and runners-up for the title of Campus Favorite were announced. Club Sweethearts were also honored, but probably the most exciting part of the evening was the announcement of the results of the Student Association's primary elections for president and vice-president.



Diana Martinez (center) was announced as the new Student Association vice-president; Joe Herrera and Alice Gray would vie in a run-off election for the office of president.



Over 100 Students Receive Awards



BCC's Second Annual Recognition Day Program was held on May 19, 1970, as the climax to a busy and successful year. The purpose of this program was to recognize outstanding students at the college and to honor them for their achievements.

Mr. Joe Schmid (left), of the Ag Department, presented Walter Branham, David Rodriguez, and Mike Havelka with certificates recognizing their scholastic excellence and making them members of the Agricultural Honor Society.



Carolyn King (above) was honored by Phi Beta Lambda as the Outstanding Secretarial Science Student. Jimmy Selge (right) was named Outstanding Business Student, and Linda Jendzey (not pictured) was honored as the Outstanding Electronic Data Processing Student.



Coach Gayle Brogdon of the Athletic Department made numerous awards to the winning Intramural teams.



Teachers were also honored at the Awards Program. The girls of the Basketball and Volleyball Teams presented Mrs. Myrtle Lucke a bouquet of red roses in appreciation of her efforts as their coach. Mr. Robert Villarreal, sponsor of the Student Government Association, was recognized by that organization and commended for the work he had done with it. A gift was presented to him also.



After receiving the oath of office from outgoing executives Joe Vorsas and Jan Lewallen, newly elected Student Government officers Joe Herrera and Diana Martinez make their acceptance speeches.

Leading Thespians Are



Steven Rockkind—All-Star Cast, Director Award



Rosemary Murphy and John Massengale—Trooper Awards

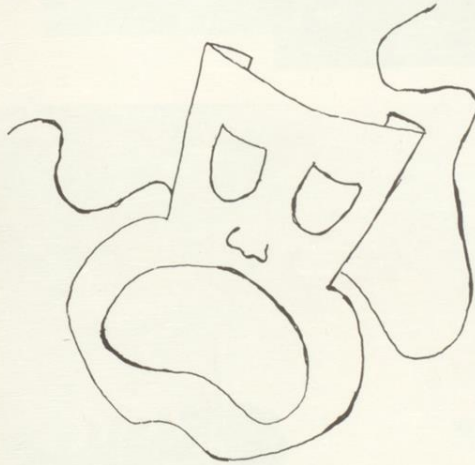


The Drama Department recognized its outstanding members at a banquet at Gilberto's Restaurant, May 16, 1970. Paul Wilmoth, head of the Drama Department made the presentations. Cited for their work in directing one-act plays were: John Davis, **Phaedra**; Sherri Kennedy, **The Doctor In Spite of Himself**; Rosemary Murphy, **The Narrenscheiden**; Steven Rockkind,

Honored at Banquet



Rosemary Murphy—Best Actress



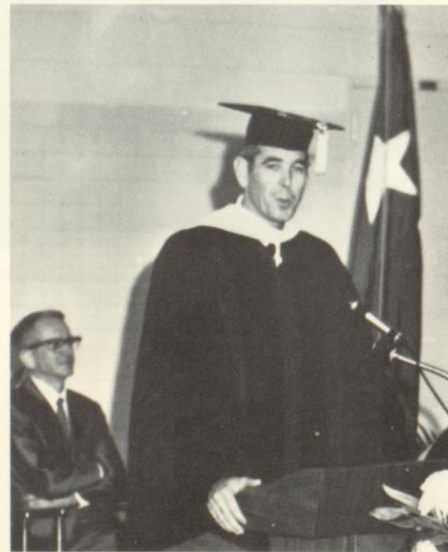
Sherri Kennedy—All-Star Cast, Director Award

The Boor. Named to the All-Star Cast were Steven Rockkind, Sherri Kennedy, Ronnie Craft, and Ellen Hays. John Davis, Rosemary Murphy, George Farris, and John Massengale were presented Trooper Awards. John Davis was recognized as Best Actor and Rosemary Murphy as Best Actress.

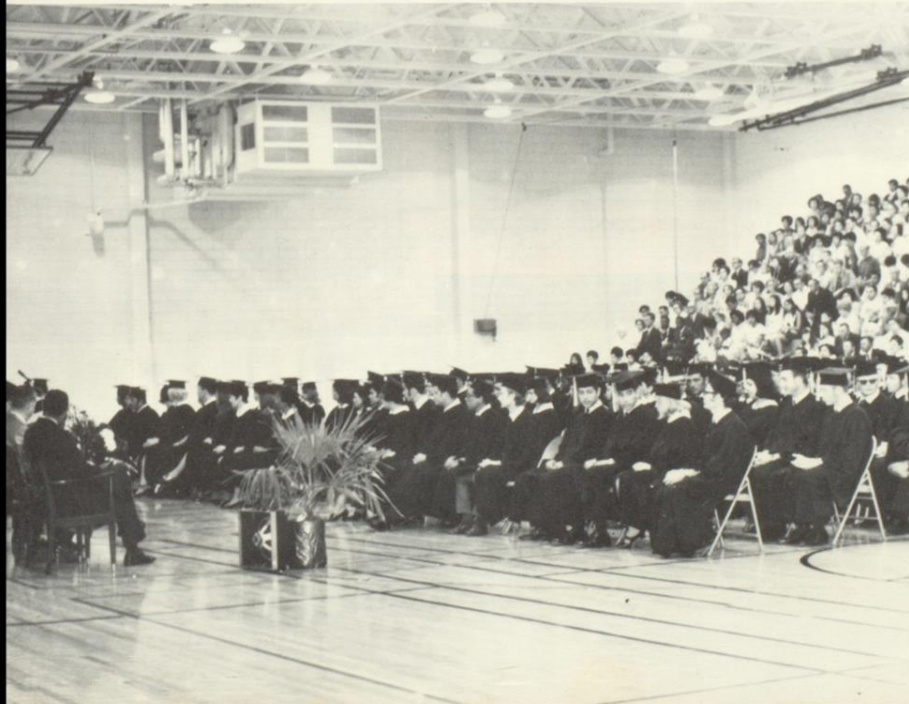
Largest Class Ever

A total of 160 students, representing the largest class in the three-year history of the college, received diplomas and certificates in commencement exercises May 29.

The president of the University of Corpus Christi, Dr. Kenneth A. Maroney, was commencement speaker.



Graduates





Then There Are Days When Life Just Goes On . . .



Naturally, every day can't be filled with exciting, memorable things. There are many, many days when people just carry on—learning . . . teaching . . . living.



Personalities

Joan Miller Captures Miss

From a field of twelve contestants, Joan Miller, a sophomore secretarial major from Sinton, was chosen Miss Bee County College, 1969-70. An active participant in campus activities, Joan served as a Student Senator for two years, was president of the B.S.U., vice president of Phi Beta Lambda, a member of the college Choir, and named to Who's Who Among Students In American Junior Colleges.

During her reign, Joan traveled to festivals and parades throughout South Texas as the official representative of Bee County College.



As her first official duty as Miss B.C.C., Joan, with First Runner Up Jan Blair and Second Run-



BCC Title



ner Up Petrita Posada represented Bee County College in Beeville's Western Days Parade.

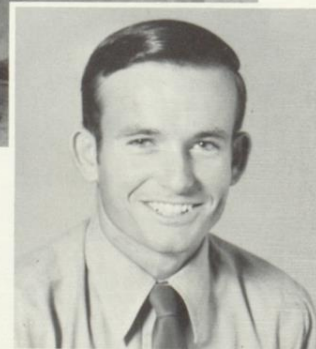


Campus Favorite



Grady Pat McGill

Although only a freshman at BCC Grady Pat McGill quickly became popular and well-known among all groups on campus. A forestry major from Refugio, he served as a Student Senator and was instrumental in organizing a chapter of the Newman Association on campus.



Campus Favorite



Beverly Besancon

Bee County College students expressed their idea of an all-around winning personality when they selected Beverly Besancon as a Campus Favorite. Bev, a Beeville sophomore, was a member of A.R.A. and served as a Cougar Cheerleader.

Campus Favorites

First Runners Up



Characterized by talent and congeniality, Mary Jane Barrientes, a Beeville freshman, was a favorite of many acquaintances. Besides being a member of the Cougar Chorale, she lent her energy and ability to BCC's production of "Oklahoma!," playing Laurey in the Rodgers and Hammerstein musical.

Joe Vorsas' outgoing personality underscored his popularity. In addition to fulfilling the full-time job of President of the Student Association, he was also a member of the band, Delta Psi Omega, Phi Theta Kappa, and Circle K.



Campus Favorites

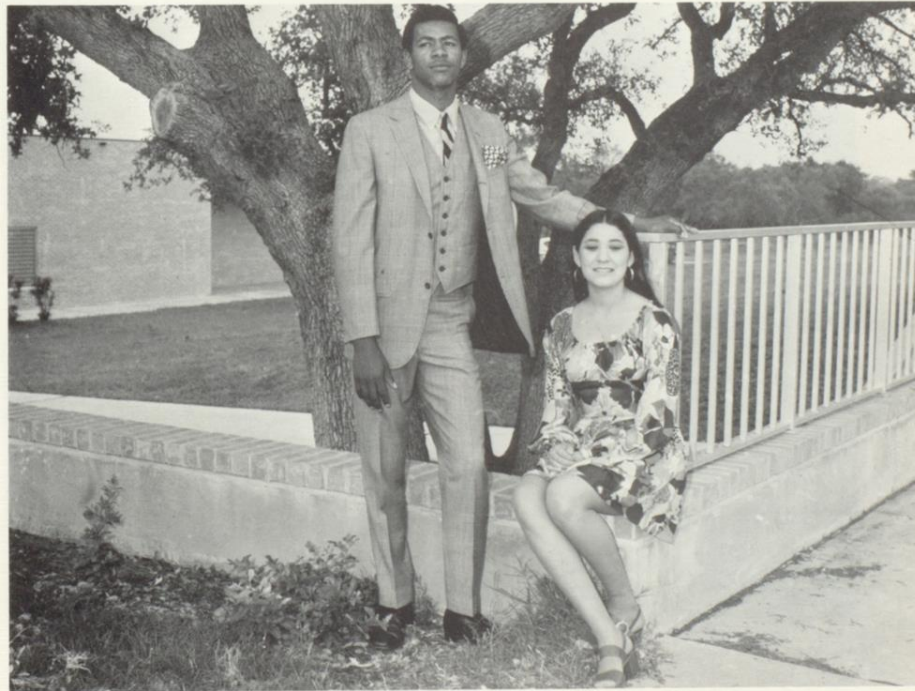
Second Runners Up



Joe Burks, a native of Herkimer, New York, came to BCC as a member of the Cougar basketball team. His vitality, perennial smile, and interest in campus activities made him popular and well-known at BCC.



Diana Martinez's winning personality and leadership ability were recognized by her simultaneous selection as a campus favorite and as Vice-President of the Student Association for the 1970-71 school year.



BEVERLY BESANCON—Circle K



PETRITA POSADA—Cactus Company



RAMONA MENDOZA—Phi Beta Lambda



SHERRY DREES—T.S.E.A.



DOSSIE SEAGO—Ag. Association

Club

BETTY JOSTES—Phi Theta Kappa



PATSY GONZALES—Los Conquistadors



BRENDA DAHSE—Rodeo Club



ROSEMARY MURPHY—Delta Psi Omega



MARY JANE BARRIENTES—Choir

14 Students Receive Who's Who Citations



Diana Busch

A committee composed of representatives from the faculty, student body and the administration selected 14 students to be included in the 1969-1970 national listing of America's most outstanding Junior College students. The students were chosen in accordance with their contributions to the college in scholarship, leadership and service. The 1969-1970 edition of Who's Who Among Students in American Junior Colleges includes a listing of the campus leaders from more than 600 of the nation's institutions of higher learning.



Roger Delaughter



Leonard De La Garza



Bruce Gray

William Green
(Picture Not Available)



Linda Jendzey

Who's Who . . .

Rosemary Murphy



Anita Thompson



Jody Barbee

Who's Who . . .



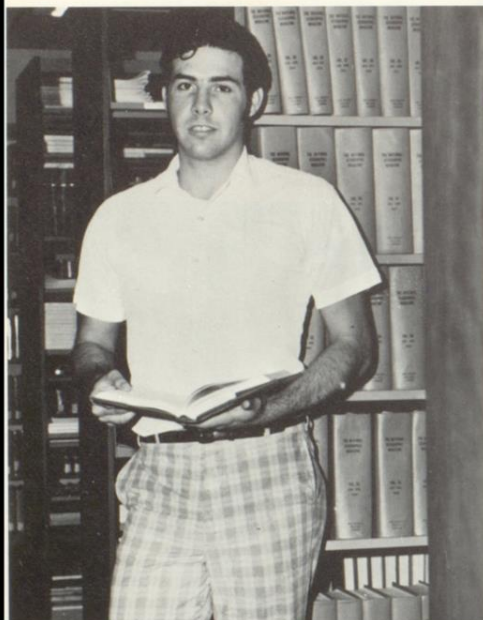
George Farris



Betty Jostes

Who's Who . . .

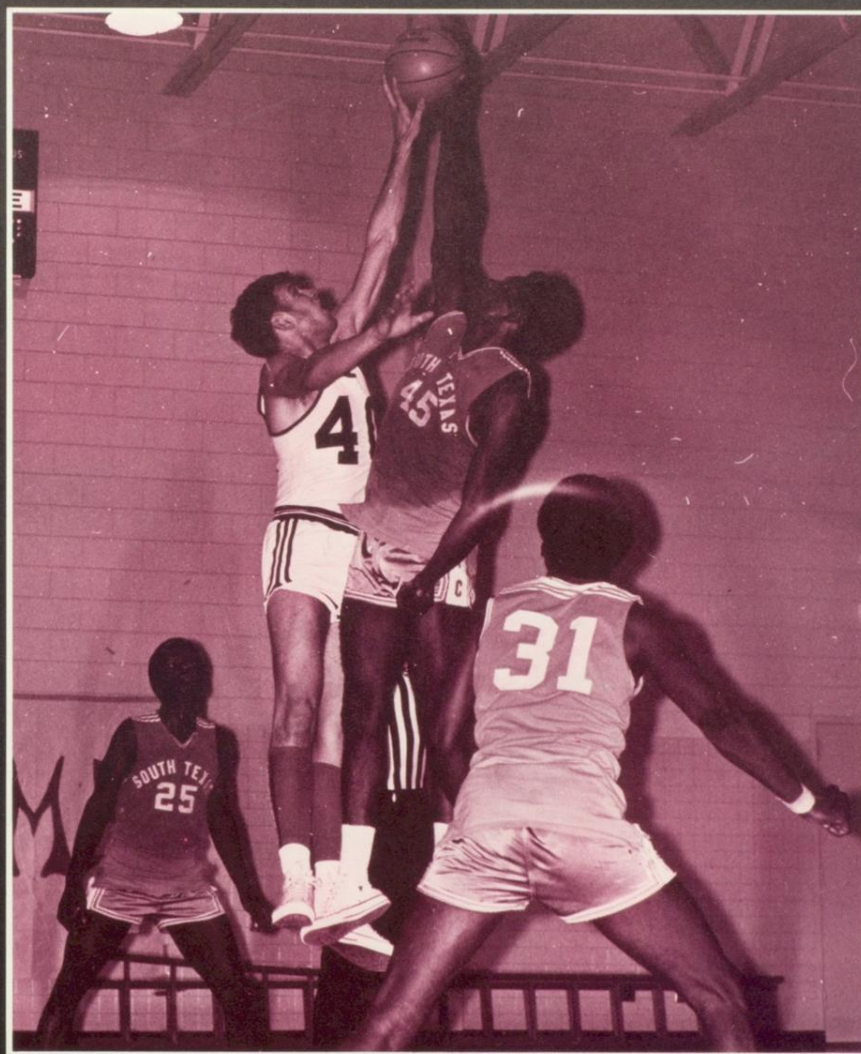
Jan Lewallen



Lucio Leal

Joan Miller





Sports

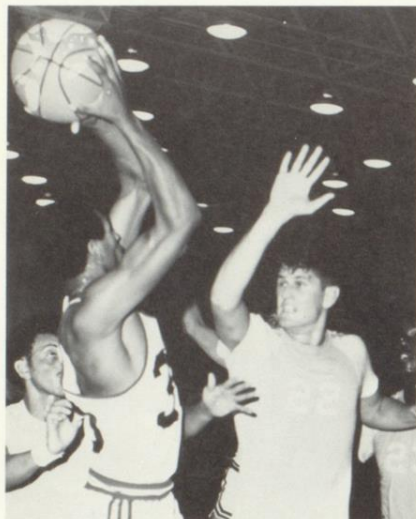
Cougars Fight Hard for

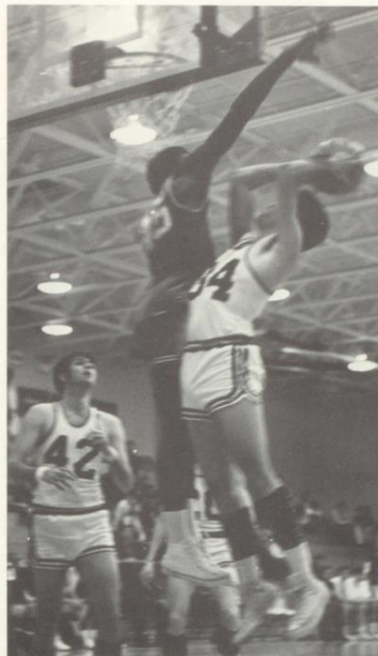


(L-r) Felix Juarez, Greg Alexander, Robert Poindexter, Roy Bilos, Arnett Williams, Bill Smith, Anthony Hinderman, Lucio Leal, George Smith, and Coach Jim Campbell.

Well-Earned Victories







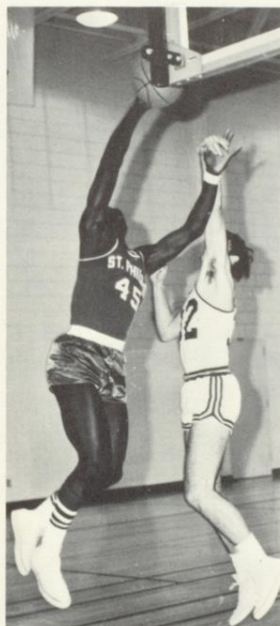
SEASON RESULTS

BCC	77	Ft. Sam Houston	104
BCC	79	St. Phillips	61
BCC	99	Kelly AFB	35
BCC	89	St. Phillips	87
BCC	69	Lee	86
BCC	92	Ft. Worth Christian	111
BCC	88	Jacksonville Baptist	69
BCC	74	UT-Austin Freshmen	107
BCC	83	SAC	104
BCC	81	Ft. Sam Houston	90
BCC	84	Lackland AFB	73
BCC	82	Pan American	86
BCC	92	Panola	73
BCC	78	San Jacinto	102
BCC	70	Lee	87
BCC	83	Victoria	100
BCC	78	Lackland AFB	92
BCC	43	San Jacinto	72
BCC	63	Lee	67
BCC	68	Wharton	79
BCC	82	Pan American	65
BCC	78	South Texas	59
BCC	85	SAC	93
BCC	92	Wharton	32
BCC	78	Lee	85
BCC	80	San Jacinto	108
BCC	78	Pan American	74
BCC	93	Victoria	92

**Cougar
Determination
Creates Exciting
Season!**



A Cougar Game



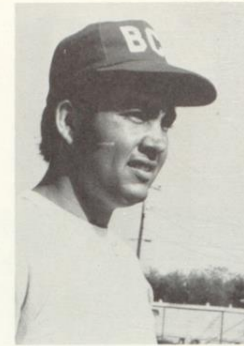
Is Never Dull!



Robert Lehnhoff

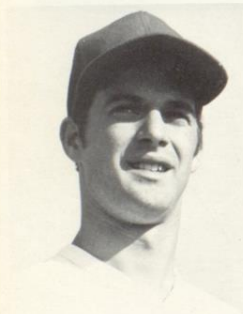


Gilbert Chapa



Felix Juarez

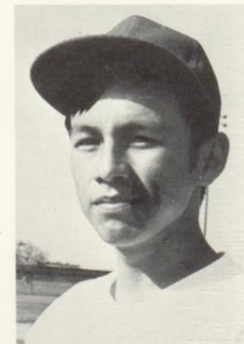
BCC Cougars Short on



David Baker



Alex Yanez



Benny Puente



Robert Poindexter

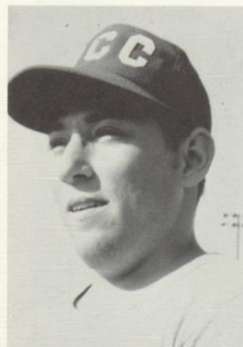


Jack Preston

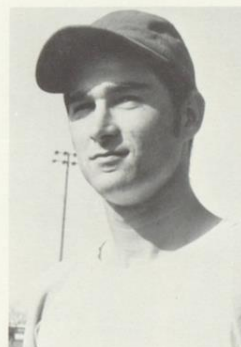


Gary Valenta

Victories, Long on Talent



Alvin Schimming



Ronnie Pawelek



Jerry Repka

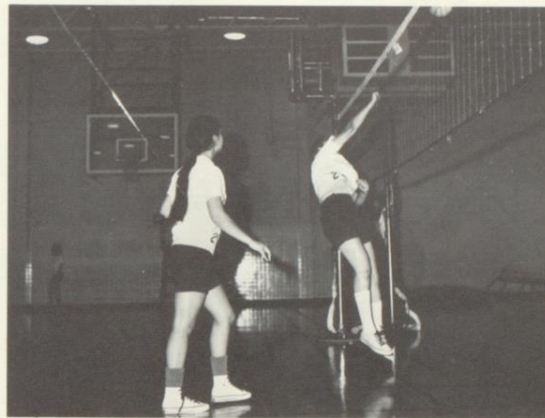


(L-r) Carolyn Tollette, Sherri Kennedy, Nancy Stevens, Sylvia Medina, Norma Hanus, Pat Kolenda, Mona Miller. Front row: Mary Quintanilla, Diana Busch, Yolanda Salinas, Barbara Mueller, Mary Petrus, Genevieve Vasquez.



Cougarettes Get Third in District

Volleyballers Get Better Every Year!



A strong combination of setups and spikes got the girls Third in District. In competition with BCC were UCC, Del Mar, A & I, and Pan American.



[L-r] Sylvia Medina, Nancy Stevens, Clare Baker, Pat Kolenda, Mona Miller, Mary Quintanilla, Genevieve Vasquez, Diana Busch, Mary Petrus, Alice Gonzales.



(L-r) Barbara Mueller, Genevieve Vasquez, Sylvia Medina, Pat Kolenda, Anna Corkhill.

BCC's women athletes made a good showing in district competition in badminton and bowling.

Gymnastics was discovered by BCC coeds this year not only as an all-round conditioning activity but as something that was fun as well.

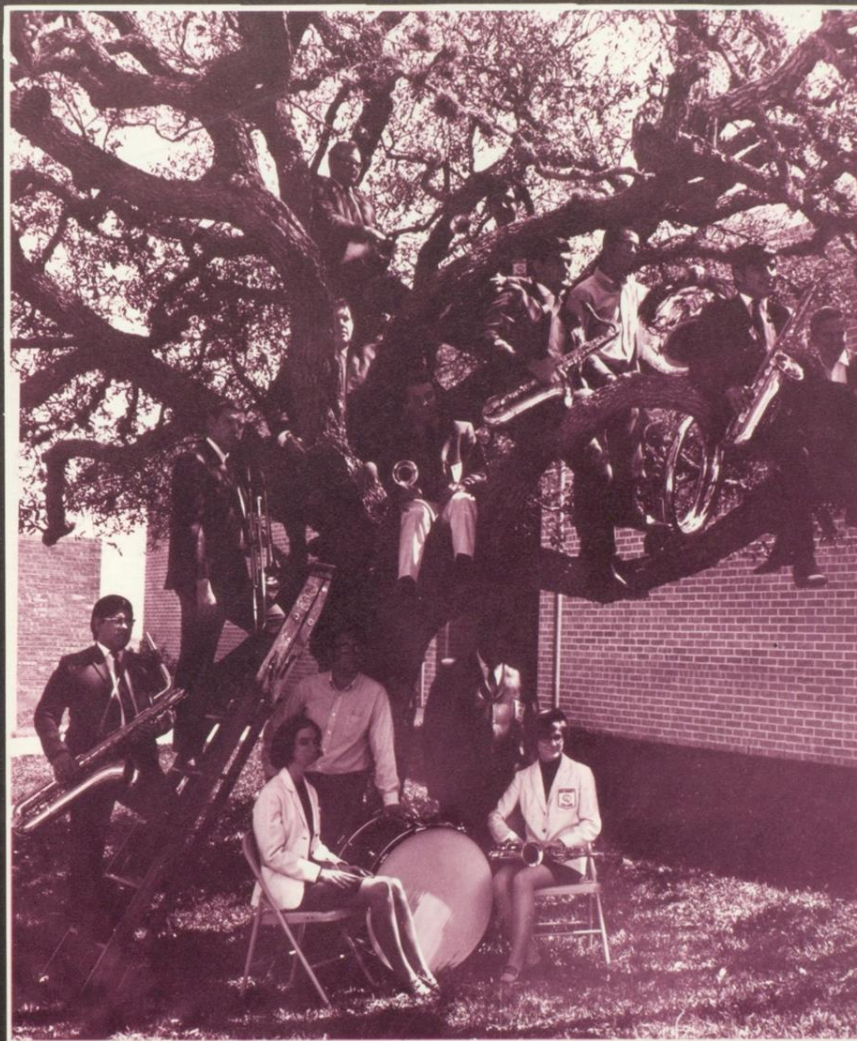


Mary Petrus



Cheryl Fowler, Alice Gonzales, Nancy Stevens, and Mona Miller.

Bowling, Badminton and Gymnastics Round Out Girls' Athletics



Organizations



Row 1: Jim Tindol, Edward Collier, Charles Shoeph, Larry Denning, and David Rodriguez. Row 2: Terry Decker, Dickie Cobb, Brenda Dahse—sweetheart, Richard Standridge, Charles Kunze, and Mr. Joe Schmid—sponsor. Row 3: Jim McDonald, Herbert Ball, Mac Hunt, James Pawlick, Dodson Sullivan, Jerry Bomer, and Bill Lohse. Not pictured: Raymond Wrinkle.

Agricultural Association

Officers for the year were Jim McDonald, president; Edward Collier, secretary; Mac Hunt, vice-president; Jim Tindol, treasurer; and Terry Decker, reporter.



The Agricultural Association is an organization which promotes leadership, fellowship, and cooperation among all students of agriculture. The Agricultural Association is a member of the Texas Junior College Agriculture Association.



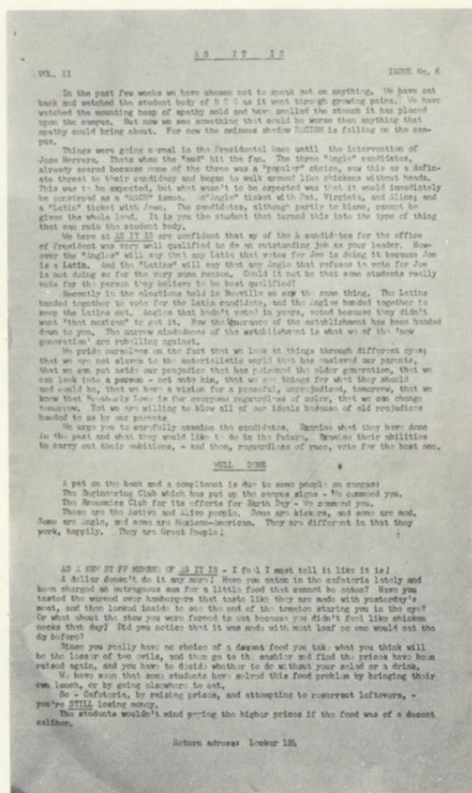
The editor-in-chief of AS IT IS.

Editor ...
 Assistant Editor ...
 Business Manager ...
 Printer ...
 Faculty Advisor ...
 Staff ...

"As It Is"



Chief reporter for the paper.



The final product—AS IT IS.



Row 1: Mary Petrus, Pat Kolenda, Diana Busch, Beverly Besancon, Baudelia Lopez, Cookie Longoria, Mona Miller, Barbara Mueller, Benny Puentes, and Hector Cavazos. Row 2: Mrs. Myrtle Lucke, sponsor, Norma Hanus, Nancy Stevens, Joe Burks, Arnett Williams, Kitty Fojtik, Jesse Mendez, Joe Trevino, and Coach Gayle Brogdon.

Athletic Recreation Association

The Athletic Recreation Association is open to all men and women students with an interest in sports. Membership is a requirement for all Physical Education majors. The women's division of ARA is affiliated with the Texas Recreation Federation. The ARA sponsors the concession stand for all home Cougar basketball games. It also promotes physical fitness and helps to develop school spirit.



OFFICERS

Vice-President—
Norma Hanus
Secretary—
Beverly Besancon
Treasurer—
Cookie Longoria
President—
Joe Burks
Reporter—
Kitty Fojtik
Girls Intramural
Chairman—
Diana Busch
Boys Intramural,
Chairman—
Sammy Syring



OFFICERS

President—Joan Miller
 Vice-President—Carolyn Tollette
 Secretary—Sylvia Flores
 Newspaper Editor—Cookie Clark
 Devotional Chairman—Richard Elam
 Missions Chairman—Jan Lewallen
 Enlistment Chairman—Sherri Kennedy
 Advisor—Dave Blanton

Baptist Student Union



The staff of THE GOOD NEWS hard at work putting out the newspaper.

The Baptist Student Union conserves and helps train Baptist students for effective Christian discipleship—reminding each student of his responsibility to Christ and of his obligation as a Christian citizen to the world in which he lives. This year action was the keyword of BCC's BSU. They began publishing THE GOOD NEWS, a newspaper aimed at the Christian Student. They also attended the Leadership Conference in April and sponsored a bake sale for the March of Dimes.

Left to right: Richard Elam, Janice Zoller, Jesse Mendez, Larry Blauwkamp, Carolyn Tollette, Cookie Clark, Sherri Kennedy, Jan Lewallen, and Joan Miller. Not pictured: Sylvia Flores.





Row 1: George Tate, and Anthony Hinderman. Row 2: Sherri Kennedy, Barbara Richey, Rosemary Murphy, Sherry Drees, Petrita Posada, Cathy Daniels, Jenny Schwierzke, John Massengale, and George Farris. Row 3: Don Staggs, Joe Vorsas, Ellen Hayes, John Davis, Steve Rockkind, Dave Daniels, and Ron Craft.

The Cactus Company is open to all students interested in dramatics and stagecraft. The Company stages several full-scale productions each year, plus short plays, and sponsors productions for college or public groups.

Officers for the year were Petrita Posada, secretary; John Davis, president; Rosemary Murphy, treasurer; and Dave Daniels, historian.



Cactus Company

The first play put on at BCC was "Law West of the Pecos."



Cheerleaders

Cheerleaders are elected by popular vote of the student body. They encourage the development and expression of school spirit and lead the students at athletic events. B.C.C. cheerleaders attended every out of town game, and are the only traveling cheerleaders in this college conference.



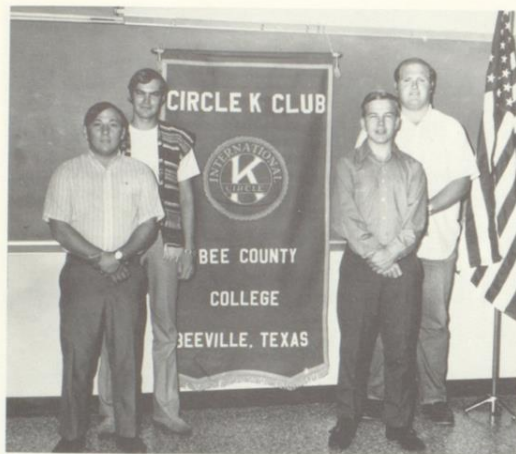
Left to right: Baudelia Lopez, Beverly Besancon, Mary Helen Muniz, and Joe Rincon. Not pictured: Dossie Seago.

Dossie and Mary Helen watching the game.



Beverly and Baudelia show their approval and support.

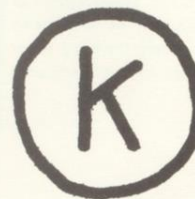




Officers for the year were Alvin Schimming, sophomore director; Danny Dean, vice-president; Tommy Lott, freshman director; and Mike Owen, president. **Not pictured:** David Bersen, treasurer; and Don Staggs, secretary.

Circle K

Circle K is a service club affiliated with the Kiwanis International. Membership is open to all male college students who wish to help their community. This year Circle K and the Kiwanis Club initiated a program entitled "Open Drug Alert."



Row 1: Jesse Castillo, Alvin Schimming, and Johnny Cano. Row 2: Danny Dean, Mike Owen, Tommy Lott, and Mr. Henry Lucke, sponsor. **Not pictured:** David Bersen, and Don Staggs.





Left to right: Cathy Hamner, Don Staggs, Mary Jane Barrientes, Richard Elam, John Massengale, Rosemary Murphy, Roger DeLaughter, Mona Miller, and Tommy Lott.

Chorale

This select group of nine voices made numerous appearances using piano and drum accompaniment and highlighted their season by singing "Aquarius" with the full Stage Band. This group was presented to the Texas Association of Colleges and Universities in Corpus Christi where they were well-received.

The Chorale in action.



Many hours of practice go into every concert the Chorale gives.





Left to right: Tommy Lott, Richard Elam, Cathy Hemner, Emilio Muniz, Mona Miller, Sherry Drees, Georgianna Campbell, Mary Ham, Albert Garcia, Elvia Salazar, Mario R. Garcia, and Cheryl Staples.

Choir

Left to right: Rory Lowe, Robert Riveria, Cathy Coombs, John Massengale, Elida Garza, Johnny Hartless, and Pat Juranek.





Left to right: Joan Miller, Genevieve Vasquez, Mona Jonischkies, Roger DeLaughter, Karen Wolff, Mary Jane Barrientes, Larry West, Beatrice Lozano, Petrita Posada, Rachel Buentello, Angie Garcia, and Pat Crawford.

The third year membership reached an all-time BCC high with 45 singers. Eight of the students journeyed to Austin to participate in the All-State Junior College Choir and are looking toward 1971 when this event will be held in Dallas. The big event for most of the choir was the production of "Oklahoma." The cast included about 75% of the choir enrollment.

Left to right: Jan Lewallen, David Stevenson, Ruth Blaschke, Jane Idom, Pat Mullins, Jenny Schwierke, Rosemary Murphy, Don Staggs, and Betty Jostes.





Row 1: Alice Gray, Kenneth Steffens, and Barbara Holbrook. Row 2: Ann Willis, Ginny Picha, Lisa Moore, Susan Sanderfer, Anna Corkill, and Janie Scherer.

Editor Lisa Moore hard at work.



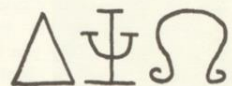
Staff members putting THE COUGAR GROWL together.

The Cougar Growl

THE COUGAR GROWL is BCC's student newspaper. Its purpose is to bring to light the newsworthy happenings of BCC. Its duty is to be the voice of the students, for it is written by them, for them. Membership on the staff is open to all interested students.



Cast #227 of Delta Psi Omega is the national honorary dramatics fraternity. Membership is by invitation to students who have excelled in drama participation.



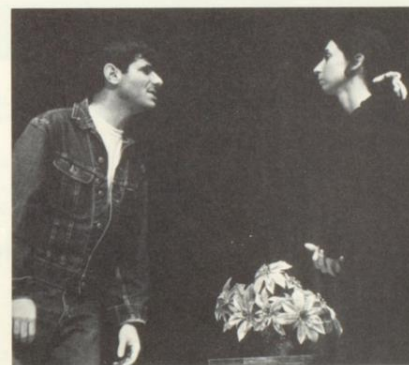
Row 1: Rosemary Murphy, Petrita Posada, and Sherry Drees. Row 2: John Davis, Joe Vorsas, Dave Daniels, Don Staggs, Jenny Schwierzke, and Sherri Kennedy.

Delta Psi Omega

Officers for the year were Don Staggs, president; Rosemary Murphy, secretary-treasurer; and Petrita Posada, vice-president.



Steve Rockkind and Rosemary Murphy in the one act play *The Boor*.



John Davis, Ellen Hays, and Ron Craft in the one act play *The Doctor In Spite of Himself*.





Row 1: Sally Garcia, Eldamira Garza, Mrs. Mairlynn Wilkins, and Ginny Picha. Row 2: Arturo Delgado, Mary Lou Zamora, Carol Kroll, Mrs. Margaret Huff, Marilyn Dixon, Eugenia Carrizales, Dr. Allen Lasiter—sponsor, Linda Freeman, Dera Koenig, Joelyn Anderson, and Mrs. Bobbie Lasiter.

The Dental Hygienist Association began its first year of existence at BCC during the spring semester. The club is open to all students enrolled in the dental hygiene program. All members of the Dental Hygienist Association become life time members if they join the dental hygiene profession. The goal of the organization is preventive dentistry.

Dental Hygienist Association

Officers for the year were Eugenia Carrizales, secretary; Carol Kroll, president; Joelyn Anderson, vice-president; and Dera Koenig, treasurer.

Dera asks, "What do I do next?"





Left to right: Jan Lewallen, Cathy Daniels, Bruce Gray, Barbara Holbrook, and Betty Jostes. Not pictured: Carolyn Tolle, Henry Longoria, photographer, and Allan Ramsey, sponsor.

El Chaparral

EL CHAPARRAL is the annual of Bee County College. It records all the events that occurred during the year and presents them to the students in a memorable book for them to look back on and enjoy in the years to come. Membership to the staff is open to all interested students.

EL CHAPARRAL editor, Betty Jostes, works diligently.

Staff members hard at work putting out the annual.





Row 1: David Garner, Alex Yanez, Billy Puckett, and Mr. Neal McBryde—sponsor. Row 2: Richard Cornett, Stanley Barre, Elliott Newman, and Lucio Leal.

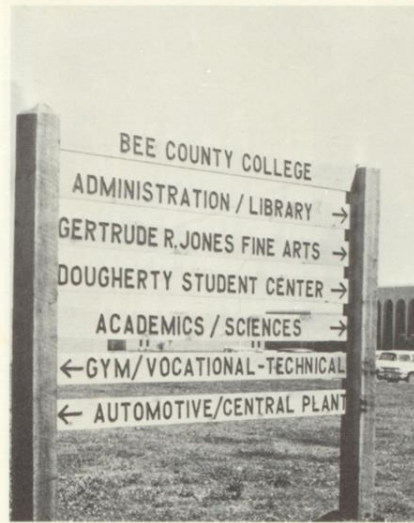
Electronics Club

The Electronics Club is open to any student interested in ham radio, electronic construction, or electronics.

Officers for the year were Elliott Newman, president; Stanley Barre, vice-president; and Alex Yanez, treasurer. **Not pictured:** Billy Puckett, secretary.

Working in the lab.





The Engineering Club is responsible for the signs on the campus.

Engineering Club

The Engineering Club is open to anyone interested in the engineering profession. Their main project was designing the signs around the campus.



Officers for the year were Vera Boldt, secretary; Elliott Newman, treasurer; Curtis Voelkel, president; and Bill Green, vice-president.

Row 1: David Bernsen, Curtis Voelkel, Richard Galloway, Isidro Cruz, and Joe Ruiz. **Row 2:** Mr. Ray Schlitzkus—sponsor, Elliott Newmann, Larry Gaines, Charles Brandt, Larry Hartman, Bill Shroyer, Vera Boldt, Bill Green, Mark Travland, Johnny Morgan, Pat Gregorczyk, and Mr. Everett Van Valkenburg.





Row 1: Robert Chamberlain, Paul Hernandez, Jerry Ibanez, Juan Lara, Alfredo Vasquez. Row 2: Ernesto Mendez, Lupita Salazar, Patsy Gonzales, Lupita Gonzales, Annie Resendez, Frances Garces, Petrita Posada, Yolanda Trevino, Mr. Norman Demereau, sponsor. Row 3: U. L. Underbrink, Thomas Perez, Nellie Barnes, Mario Garcia, Albert Garcia, Javier Garcia, Effie Cardona, Jose A. Herrera, Romulo Garcia, Robert Ramirez, and Jose Garcia.

Los Conquistadors

Los Conquistadors is open to any student interested in the Spanish language, customs and culture. In connection with these interests, a number of members went to San Antonio and Mexico City this year. As a fund-raising project, Los Conquistadors sponsored a dance and a raffle in the fall. In an effort to promote campus unity, they co-hosted the spring Favorites Dance which featured both a Spanish band and a rock band.

OFFICERS:

U. L. Underbrink—Secretary
 Patricia Gonzales—Treasurer
 Juan Lara—Historian-Reporter
 Yolanda Trevino—Vice President
 Petrita Posada—President



Newman Association



The Coordinating Board is composed of Mary Garza, Grady Pat McGuill, Shawn Seger, Pat Juranek, and Martha Garza.

The Newman Association of Bee County College was formally organized during the spring semester of the 1969-1970 school year. This is a Catholic college student organization designed to help Catholic students reach a deeper understanding of their faith and today's morals. During the semester the members had several guest speakers to discuss current issues and problems, showed a number of film strips and movies, and ended the year with an outing to Rockport.

Left to right: Grady Pat McGuill, Mary Garza, Shawn Seger, Mary Petrus, Pat Posada, Pat Juranek, Frances Garces, Bill Christenson, Martha Garza, and Beverly Besancon.





Twenty new members were initiated into Phi Theta Kappa at the spring initiation. Pastor Walter Wiklund of Gotland, Sweden, was guest speaker for the program.



Jody Barbee, Phi Theta Kappa's representative in Beeville's 1969 parade.

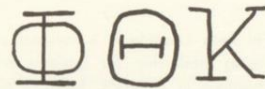
Phi Theta Kappa members at their Christmas Tea.





Row 1: Anita Thompson, Pat Kolenda, and Maggie Armstrong. Row 2: Doris Brandon, Ruth Blaschke, Nancy Fuhrken, James McMurrey, Norma Hanus, Jan Lewallen, Kitty Fojtik, Bill Beardsley, Barbara Holbrook, Sylvia Flores, Ginny Roberson, and Nellie Barnes. Row 3: Kay Schultz, Yolanda Salinas, Betty Jostes, Mary Nell Petrus, Diana Busch, Margarita Amador, and Mary Meuret.

Phi Theta Kappa



Officers for the year were Betty Jostes, secretary; Mary Frances Cade, treasurer; Bill Beardsley, president; Anita Thompson, vice president; and Diana Busch, reporter.

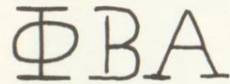
Phi Theta Kappa is the national scholastic honor fraternity for junior colleges. Selection is based on scholastic performance in academic curricula. BCC's Rho Lambda Chapter was represented this year by a float in Beeville's Western Days Parade. The group also continued their custom of giving a Christmas Tea in honor of the administration and faculty.





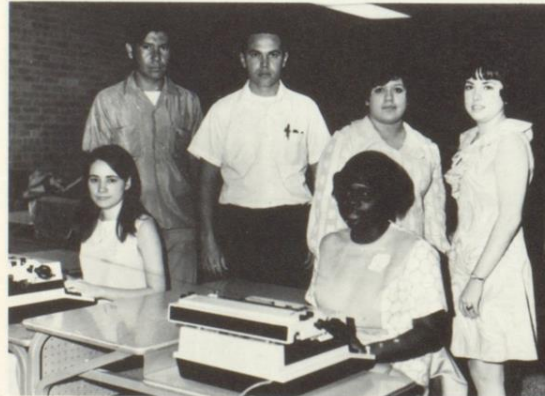
Row 1: Joan Miller, Yolanda Garcia, Norma Everett, Karen Johnson, Mary Meuret, Manuela De Luna, Adela Davila, Maria Sanchez, Ramona Mendoza, and Mrs. Violet Shirey, sponsor. Row 2: David Moczygemba, Charles Dittfurth, Rudy Villa, Carol Berkenhoff, Judith Metting, Patricia Syring, Enedino Bryan, Rosalinda Ramirez, Julia Camancho, Vernita Mattox, Dalia Sandoval, and Carolyn King. Not pictured: Joe Garza.

Phi Beta Lambda



Phi Beta Lambda is a national organization for the purpose of developing leadership for business education, and to interpret the role of business in America. Membership consists of students who are enrolled in business subjects, who are of high character, and who maintain a passing average.

Officers for the year were Dalia Sandoval, secretary; Joe Garza, business manager; Enedino Bryan, president; Julia Camancho, reporter; Carolyn King, treasurer; and Joan Miller, vice-president.



During National Secretary Week Phi Beta Lambda sponsored a tea honoring all of the college's secretaries.



Rodeo Club

The Rodeo Club provides recreation, fellowship, and competitive experience among its members. Members participate in local rodeos and related events. The Rodeo Club is open to any student interested in intercollegiate rodeo activities. Club members also rode in several area parades.



Officers for the year were Jerry Bomer, vice-president; Brenda Dahse, reporter; Jim McDonald, treasurer; and Ray Brown, president. **Not pictured:** Dossie Seago, secretary.

Row 1: Jim Tindol, Edward Collier, Larry Denning, Richard Standridge, and Dickie Cobb. **Row 2:** Terry Decker, Phyllis Madison, Joelyn Anderson, Dossie Seago, Brenda Dahse, Charles Runze, and Mr. Joe Schmid, sponsor. **Row 3:** Mac Hunt, Herbert Bell, Dodson Sullivan, Jim McDonald, Jerry Bomer, and James Pawlik. **Not pictured:** Ray Brown.





Left to right: Betty Jostes, George Farris, Cathy Daniels, Carolyn Tollette, Rosemary Murphy, Jenny Schwierzke, Diana Busch, and Joan Miller—Sophomore Senators.

Student Government Association

The Student Government Association seeks to represent and express the needs and desires of the student body. It is composed of the sixteen-member Student Senate and its officers and the five members of the Supreme Court. In its second year of activity, the Association sponsored the Miss BCC Pageant and President's Ball, two Al Dean dances, and the Favorites Dance, as well as giving financial aid to the college's traveling cheerleaders and assisting the Art Department to hold a Photography Contest open to the community. A Senate-constructed float represented the college in parades throughout South Texas. As part of their efforts to aid students, a color television set was purchased for the Student Center and Senators worked to bring down food prices in the cafeteria. By far the largest project undertaken by this group was the hosting of the Texas Junior College Student Council Association Regional Convention. The convention's well-planned success brought praise to BCC at the later State Convention.

Left to right: Barbara Richey, Lisa Moore, Alice Gray, Barbara Mueller, Richard Elam, Grady Pat McGill, Pat Juranek, and Sylvia Flores—Freshman Senators.





OFFICERS:

Wayne Cowey—Comptroller
 Jan Lewallen—Vice-President
 Joe Vorsas—President
 Ginny Roberson—Secretary
 Mr. Robert Villarreal—Sponsor



Joe Vorsas officially presents the Student Centers' new color television to President Hogue.





Clockwise from bottom: Janice Zoller, Peppy Jimenez, Joe Vorsas, Rosemary Murphy, Emilio Muniz, Robert Brown, Pat Juranek, Wilburn Atwood, Robert Rivera, Ronnie Alvarado, Hector Montemayor, David Stevenson, Celso Salinas, and Tommy Lott. Not pictured: Jenny Schwierke.

Stage Band

The Stage Band completed its second successful season since its organization under the leadership of Everett McAuley, director. Beginning with the "Miss Bee County College Pageant" and terminating with a performance for the Skidmore-Tynan Public Schools, the band not only performed on campus for student programs and basketball games, but also made numerous public appearances in the area. One of the highlights of the year was a parade appearance with the Band on a truck, sporting sombreros, serapes, and moustaches and beating forth "Rancho Grande" and "Goin' Out of My Head."

Tommy Lott doing his own thing!



The band as they appeared in the Beeville parade.



Peppy Jimenez keeping the beat.





Officers for the year were Doris Brandon, president; Kay Schultz, historian; Javier Garcia, parliamentarian; Baudelia Lopez, secretary; Elda Garcia, treasurer; Yolanda Salinas, vice-president; and Sherry Drees, reporter.



Mr. Archie Roberts was the guest speaker at the New Officers Workshop for Area 9 hosted at BCC.

Texas Student Education Association

TSEA is open to anyone interested in education, and most of the members intend to enter the teaching field after their college preparation. TSEA received an Emphasis '70 Award for outstanding achievement in completing their goals and was runner-up as the most outstanding club.

Row 1: Pat Posada, Elda Garcia, Margaret Amador, Diana Busch, Alberto Gonzales, Rosalinda Estrada, Doris Brandon, Sherry Drees, and Yolanda Salinas. Row 2: Kay Schultz, Baudelia Lopez, Janie Scherer, Mary Huser, Nellie Barnes, U. L. Underbrink, Javier Garcia, Barbara Sandlin, Albert Garcia, and Karen Wolfe.



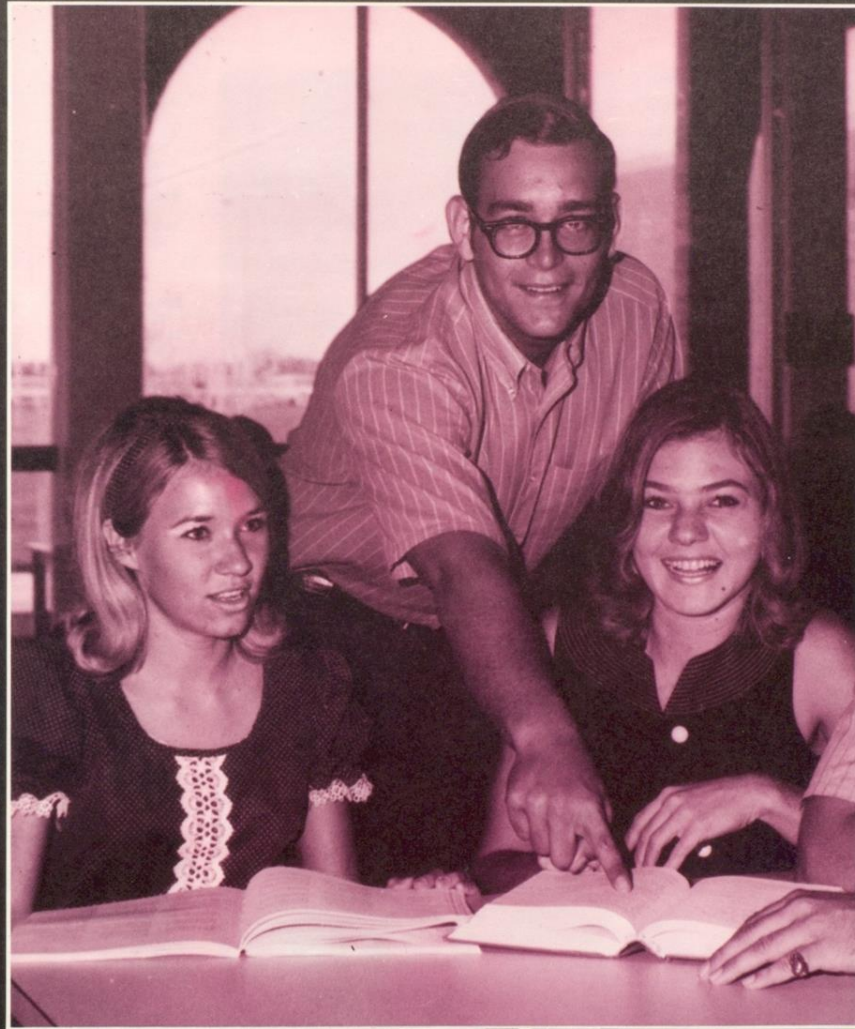
Zero Population Growth

Zero Population Growth (ZPG) is a national organization formed in 1969 by Dr. Paul Erlich of Stanford University. It is a non-profit organization concerned with the population problem. ZPG feels that the population problem is an underlying cause of our environmental deterioration, and its goal is to stop population growth in the U.S. by 1980 and in the world by 1990 by equalizing the birth rate with the death rate. The group advocates that families should have no more than two children.

BCC students, sponsored by Miss Elizabeth Hall, formed a local chapter of ZPG in 1970. Their main activity this spring was working in support of those programs planned by Environmental Action, Inc., for Earth Day.



Charter members Anita Thompson and Maggie Armstrong distributing information on Earth Day, urging everyone to "Stop at 2."



Classes

Freshmen



Aguirre, Anita
Kenedy, Texas
Aguirre, Yolanda
Kenedy, Texas
Anderson, Jolene
Karnes City, Texas
Bain, Bob
George West, Texas
Ball, Herbert
Berclair, Texas



Berckenhoff, Carol
Yorktown, Texas
Bernsen, David
Beeville, Texas
Blaschke, Ruth
Kenedy, Texas
Boldt, Vera
Beeville, Texas
Bonner, Beulah
Refugio, Texas



Brandon, Doris
Goliad, Texas
Campbell, Georgiana
Armstrong, Texas
Casarez, Rita
Beeville, Texas
Cases, Elias
Taft, Texas
Chaddock, Becky
Cuero, Texas



Chapa, Carlos
Kenedy, Texas
Chapa, Dora
Beeville, Texas
Clamon, Billie Jean
Sinton, Texas
Collier, Edward
Beeville, Texas
Corkill, Anna
Sinton, Texas



Cornett, Richard
Odem, Texas
Crawford, Pat
Three Rivers, Texas
Crow, Lois
Kenedy, Texas
Cryer, Darlene
Kenedy, Texas
Dahse, Brenda
Orange Grove, Texas



Davis, Carolyn
Sinton, Texas
Davis, John
Beeville, Texas
DeCourval, Jay
Portland, Texas
De Luna, Manuela
Goliad, Texas
Denning, Larry
Beeville, Texas

Freshmen

Dittfurth, Charles
Yorktown, Texas
Dixon, Marilyn
Kenedy, Texas
Dragon, Anthony
Hobson, Texas
Elam, Richard
Beeville, Texas
Elliot, Cynthia
Beeville, Texas



Flores, Lupe
Port Lavaca, Texas
Flores, Sylvia
Skidmore, Texas
Fojtik, Kitty
Beeville, Texas
Fowler, Cheryl
Beeville, Texas
Freeman, Linda
Beeville, Texas



Fridge, Cheryl
Beeville, Texas
Froling, Carleen
Tuleta, Texas
Fuentes, Gloria
Three Rivers, Texas
Fuhrken, Nancy
Orange Grove, Texas



Garcia, Albert
Taft, Texas
Garcia, Estela
Beeville, Texas



Garcia, Frank
Sinton, Texas
Garcia, Refugia
Pawnee, Texas



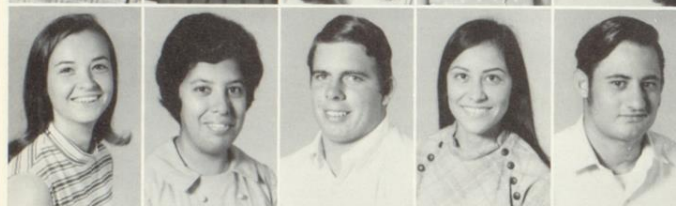
Garcia, Mario
Alico, Texas
Garcia, Romulo
Alico, Texas



Freshmen



Garza, Diana
Beeville, Texas
Garza, Elda
Alice, Texas
Garza, Eldamira
Beeville, Texas
Garza, Elana
Alice, Texas
Garza, Lydia
Beeville, Texas



Gaskins, Cynthia
Nordheim, Texas
Gayton, Rita
Woodsboro, Texas
Gibson, Mike
Taft, Texas
Gonzales, Alice
Pawnee, Texas
Gonzales, Erasmo
Runge, Texas



Gonzales, Guadalupe
Orange Grove, Texas
Gonzales, Roel
Mathis, Texas
Goodwin, Nancy
Beeville, Texas
Gray, Alice
Sinton, Texas
Gray, Gary
Beeville, Texas



Green, Linda
Beeville, Texas
Griffin, Robert
Nixon, Texas
Harris, Ruby
Refugio, Texas
Havelka, Stephen
Sinton, Texas
Hays, Ellen
Sinton, Texas



Hernandez, Paul
Taft, Texas
Hinojosa, Henry
Sinton, Texas
Holbrook, Barbara
Sinton, Texas
Holmes, Rodger
Kenedy, Texas
Huff, Margaret
Harlingen, Texas



Hunter, James
Rochester, New York
Jennings, Kenneth
Buchanan Dam, Texas
Johnson, Jackie
Beeville, Texas
Kirtz, Thomas
Beeville, Texas
Koenning, Dera
Alice, Texas

Freshmen

Krisch, Donald
Kenedy, Texas
Kroll, Carol
Karnes City, Texas
Krueger, Martin
Kenedy, Texas
Lohse, William
Skidmore, Texas
Longoria, Henry
Beeville, Texas



Lopez, Hilda Ann
Karnes City, Texas
Lundquist, Annie
Kenedy, Texas
Maddox, Vernita
Beeville, Texas
Madsen, Phyllis
Kenedy, Texas
Marek, Raymond
Runge, Texas



Marshall, Harriet
George West, Texas
Martinez, Claudia
Beeville, Texas
Maxwell, Richard
Sinton, Texas
Mehrer, William
Beeville, Texas
Mendez, Ernest
Taft, Texas



Mendoza, Ramona
Kenedy, Texas
Metting, Judy
Yorktown, Texas
Meuret, Mary
Yorktown, Texas
Miller, Mona Lisa
Mathis, Texas
Molina, Simon
Sinton, Texas



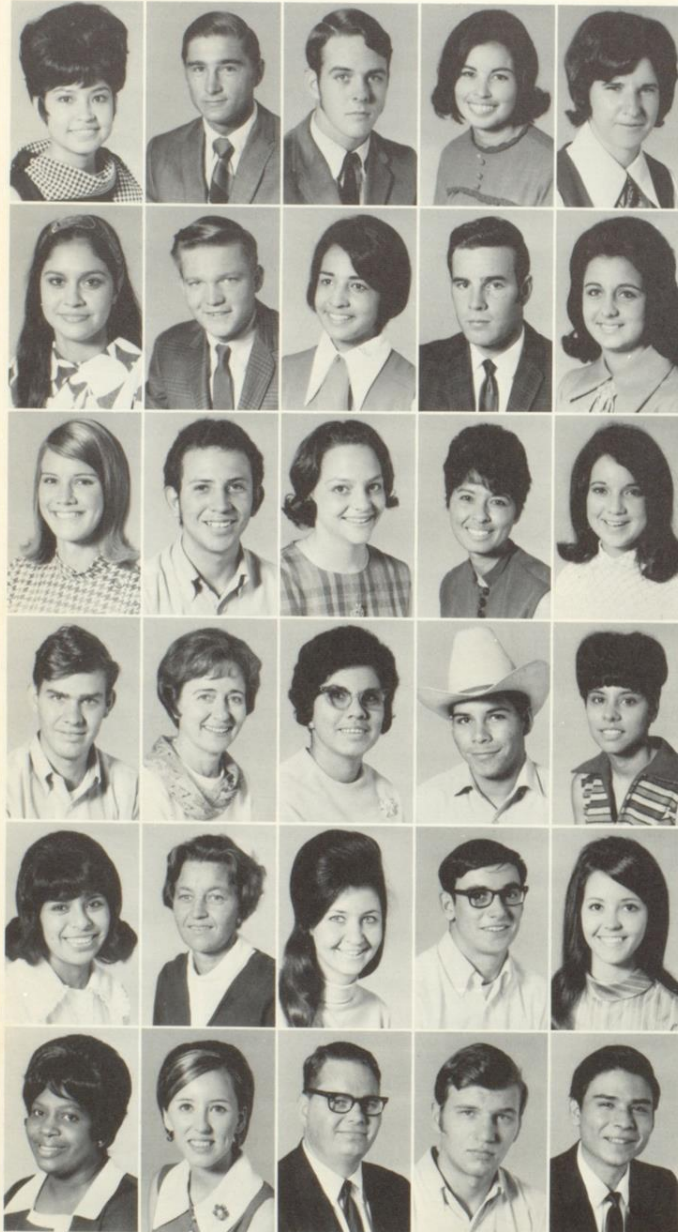
Moore, Lisa
Sinton, Texas
Moreno, Adela
Runge, Texas
Moses, Charleen
George West, Texas
Mosey, Steve
Refugio, Texas
Mueller, Barbara
Runge, Texas



Mullins, Pat
Beeville, Texas
McDonald, Jimmy
Mathis, Texas
McFarland, Mike
Beeville, Texas
McGuill, Grady Pat
Refugio, Texas
Nutt, Terry
Skidmore, Texas



Freshmen



Olbera, Elida
Sinton, Texas
Pawelek, Ronnie
Hobson, Texas
Pawlick, James
Sinton, Texas
Perez, Lucy
Refugio, Texas
Pippins, Betty
George West, Texas

Quintanilla, Mary
Tilden, Texas
Reiley, Dennis
Kenedy, Texas
Reyes, Brenda
Campbellton, Texas
Reynolds, Dennis
Runge, Texas
Reynolds, Rayba
Yorktown, Texas

Richey, Barbara
Beeville, Texas
Rivera, Robert
Beeville, Texas
Roberson, Ginny
Kenedy, Texas
Rocha, Sylvia
Refugio, Texas
Rush, Patsy
Fulton, Texas

Russell, Larry
Orange Grove, Texas
Sadler, Maurine
Three Rivers, Texas
Salazar, Ernestina
Beeville, Texas
Salazar, Ralph
Beeville, Texas
Salinas, Yolanda
Skidmore, Texas

Sanchez, Maria Elena
Alice, Texas
Schanen, Mary
Beeville, Texas
Schroedter, Diana
Nordheim, Texas
Schwab, Ken
Yoakum, Texas
Seago, Dossie
Alice, Texas

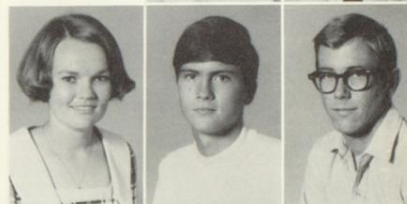
Shaw, Mrs. Marjorie
Refugio, Texas
Sherrill, Janis
Karnes City, Texas
Simmons, Sam
Kenedy, Texas
Smith, Bill
San Antonio, Texas
Solis, Lupe
Refugio, Texas

Freshmen

Southall, Annie
Beeville, Texas
Standridge, Richard
Skidmore, Texas



Staples, Cheryl
Tuleta, Texas
Stautzenberger, Scott
Tynan, Texas
Steffens, Kenneth
Beeville, Texas



Stinson, Eileen
Kenedy, Texas
Suniga, Sulema
Skidmore, Texas
Swriec, Glenn
Hobson, Texas
Taylor, Mary Ann
Refugio, Texas
Timmons, Martha
Beeville, Texas



Tolbert, Jeff
Kenedy, Texas
Trevino, Jose
Beeville, Texas
Underwood, Francis
Refugio, Texas
Valenta, Gary
Sinton, Texas
Varga, Thomas
Beeville, Texas



Vecera, Sulema
Refugio, Texas
Villa, Gloria
Beeville, Texas
Villa, Rodolfo
Yorktown, Texas
Villagomez, Sarah
Mathis, Texas
Willis, Ann
Sinton, Texas



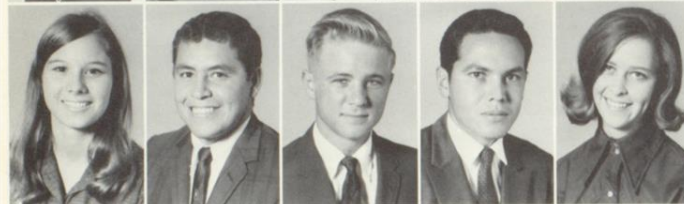
Wyrick, Sylvia
Freer, Texas
Yanta, Allen
Hobson, Texas
Younts, Frances
Oakville, Texas
Zamora, Mary Lou
Three Rivers, Texas
Zissa, Robert
Yorktown, Texas



Sophomores



Barbee, Jody
Kenedy, Texas
Barker, Ernest D.
Beeville, Texas
Barnes, Nellie
Goliad, Texas
Barre, Stanley
Karns City, Texas
Beardsley, Bill
Kenedy, Texas



Besancon, Beverly
Beeville, Texas
Blakely, Lewis
Beeville, Texas
Bobbitt, Larry
Woodsboro, Texas
Bryan, Enedino
Runge, Texas
Busch, Diana
Pawnee, Texas



Burks, Joe
Beeville, Texas
Castillo, Jesse
Beeville, Texas
Cavazos, Hector
Falfurrias, Texas
Chape, Hilario III
Pawnee, Texas
Cowey, Wayne
Pettus, Texas



Crews, Carolyn
Woodsboro, Texas
Cruz, Celia
Three Rivers, Texas
Daniels, Cathy
Beeville, Texas
De La Garza, Gus
Kenedy, Texas
DeRusse, Joe Henry
Beeville, Texas



Dillingham, Mike
Beeville, Texas
Dress, Sherry
Beeville, Texas
Everett, Norma
San Diego, Texas
Gaines, Larry
Woodsboro, Texas
Galloway, Richard
Beeville, Texas



Garces, Frances
Beeville, Texas
Garza, Joe
Sinton, Texas
Gomez, Mary Alice
Skidmore, Texas
Gonzales, Thomas
Pawnee, Texas
Graumann, Bruce
Kenedy, Texas

Sophomores

Guerrero, Fidel
Alice, Texas
Ham, Mary
Whitsett, Texas



Hanus, Norma
Skidmore, Texas
Herrera, Jose
Alice, Texas
Hicks, Kenneth
Skidmore, Texas
Hurst, Dairell
Beeville, Texas



Huser, Mary
Beeville, Texas
Jalufka, David
Kenedy, Texas
Jendrzey, Linda
Yorktown, Texas
Johnson, Karen
Kenedy, Texas
Johnson, Warren
Kenedy, Texas



Jostes, Betty
Tynan, Texas
Juarez, Felix
San Antonio, Texas
Karnei, Sandra
Nordheim, Texas
Kennedy, Sherri
Woodsboro, Texas
King, Carolyn
Karnes City, Texas



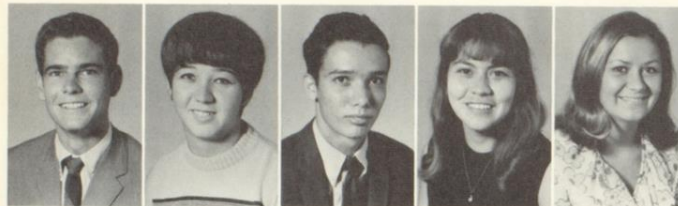
Krisch, Richard
Kenedy, Texas
Longoria, Mary Alice
Beeville, Texas
Lopez, Baudelia
Three Rivers, Texas
Lundquist, Blanche
Pawnee, Texas
Massengale, John
Beeville, Texas



Merritt, Charles
Runge, Texas
Miller, Joan
Sinton, Texas
Miller, Paul
Sinton, Texas
Mizell, Hermann
Beeville, Texas
Morrow, Nell
Pettus, Texas



Sophomores



Newman, Elliot
Kenedy, Texas
Percy, Sherri
Beeville, Texas
Perales, Quirino
Taft, Texas
Perez, Evangeline
Three Rivers, Texas
Petrus, Mary
Skidmore, Texas



Posada, Pat
Beeville, Texas
Pullin, Janet
Three Rivers, Texas
Rodriguez, Rosie
Beeville, Texas
Salge, Wayne
Karnes City, Texas
Sandoval, Dalia
Alice, Texas



Scherer, Janie
Sinton, Texas
Schultz, Florence Kay
Pawnee, Texas
Seger, Shawn
Beeville, Texas
Serda, Conception
Sinton, Texas
Smith, Debbie
George West, Texas



Sprenkel, Joyce
Karnes City, Texas
Staggs, Don
Kenedy, Texas
Thompson, Anita
Beeville, Texas
Tollette, Carolyn
Skidmore, Texas
Torres, Rey
Beeville, Texas



Underbrink, Urban L.
Goliad, Texas
Voelkel, Curtis
Nordheim, Texas
Vorsas, Joe
Beeville, Texas
Weeks, Margaret
Beeville, Texas
Williams, Don
Goliad, Texas



Witcher, Greg
Runge, Texas
Wolff, Karen
Three Rivers, Texas
Winkle, Raymond
Pettus, Texas
Young, Barbara
Mathis, Texas
Young, Janice
Three Rivers, Texas

ISAACKS GULF
SERVICE

across from
college



358-9975

Tune up Wheel Balance
COFFEE'S ON—COME ON IN

Compliments of
PALACE CLEANERS

D. MEDINA, Prop.
500 W. Stamper
358-9088

Quality cleaning



**MORENO'S
PHARMACY**

358-2164

Beeville, Texas

Prescriptions—Drugs
Sundries We Deliver

**GONZALEZ INSURANCE
AGENCY**

Auto Insurance—Surety Bonds

A. V. GONZALEZ

Phone 358-5117

Beeville, Texas

GALLOWAY & SONS, INC.

FUNERAL DIRECTORS

MEMBER BY INVITATION

NATIONAL SELECTED MORTICIANS

Phone 358-2512

CHARLES GALLOWAY
JOHN GALLOWAY

P.O. Box 1209 409 N. Tyler
Beeville, Texas 78102
In Our 50th Year

HUNT

AUTO COMPANY

115 W. Houston 358-1234

Serving Bee County Over 50 Years

NO GIMMICKS—Just Good, Sound Business Dealings!

Congratulations

1970 Graduates

From

STATE BANK & TRUST COMPANY

a friendly banking service since 1931

218 Washington 358-3365

MEMBER F.D.I.C.

JOHN EASTON
—REALTOR—
Farms—Ranches—City Property

OFFICE PHONE 358-5112
HOME PHONE 358-3566

110 N. Washington St.
Beeville, Texas 78102


BEE CLEAN
LAUNDRY & CLEANERS

"storage for furs"

P.O. Box 367
108 N. St. Marys Street
Beeville, Texas

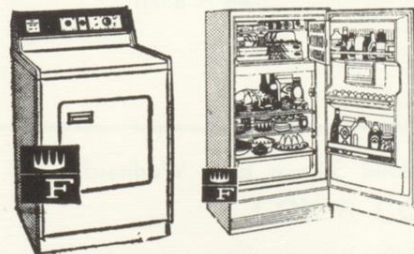


TWO STORES
311 N. St. Mary's
315 N. Washington
Beeville, Texas

Fizer Jewelry 

211 N. Washington St.
Beeville, Texas
P.O. Box 760 Phone FL 8-1215

B&J
HARDWARE



1502 N. St. Marys 358-2286

Congratulations
Class of '70
From



3000 N. St. Marys
Beeville, Texas

QUICK SERVICE
BOOT SHOP

TONY LAMA AND JUSTIN BOOTS
Always Happy To Serve You
307 W. Corpus Christi St.
Beeville, Texas 78102



TOM'S UPHOLSTERY SHOP

Furniture Upholstery and Repair
315 W. Corpus Christi PHONE FL 8-4824

BUTTS
RADIO & TV
Quasar^{T.M.}by
MOTOROLA[®] 

The Color TV
With the Works in
the Drawer.
We Service All We Sell
1500 N. St. Mary's
358-3155

ZIMMER
FLORAL AND NURSERY



J K'S
SHORT ORDER

specializing in
Fried Chicken
Catfish
Across From A. C. Jones High School

San Antonio Hiway
Beeville, Texas
Phone FL 8-1721

Double Gold Bond Stamps Each Wednesday

Bonham's

Washington at Huntington, Beeville

GIFTS BOOKS ANTIQUES

COQUALLA'S

"BETTER THINGS FOR BETTER HOMES"

MRS. KAY PACHECO

120 N. Washington, Beeville, Texas

FL 8-3848

DAN A. TROY

Real Estate Broker

Hotel Kohler B'dg.
406 No. Washington



Penneys
ALWAYS FIRST QUALITY

306 N. Washington
Beeville, Texas

FL 8-4528



OTIS
AND
SHIRLEY



Open
10 AM
Closed
11 PM

Thank
You

**K-N ROOT BEER
FAST CURB SERVICE**

BIG BURGERS
HAMBURGERS
FISH BURGERS
CHILI DOGS
CHICKEN—SHRIMP
STEAK FINGERS

MALTS—SHAKES
FRENCH FRIES
ONION RINGS
DRINKS AND FLOATS
ROOT BEER—
QUARTS OR GALLONS

CALL AND YOUR ORDER
WILL BE READY WHEN
YOU ARRIVE

**K-N ROOT BEER
DRIVE-INN**

Compliments of

COX & COX, ABSTRACTORS

ALEX F. COX, Owner

Agents for Lawyers Title Insurance Corporation

P. O. Box 1090 Beeville, Texas

Phone FL 8-3261



**HOUSTON
NATURAL GAS CO.**

104 N. St. Mary's Street
358-4801
Beeville, Texas

VISIT
KING BEE
Drive-In Restaurant
and
Grocery



Compliments of
NORTHSIDE BOWLING LANES

San Antonio Highway
Beeville, Texas FL 8-5959

COMPLIMENTS OF
MEYER
MOTOR PARTS

Auto Parts
Machine Shop
Service
500 East Houston
Beeville, Texas
PHONE: 358-2541



WADE & CLEWIS INSURANCE AGENCY

Wilson Building
104 S. Corpus Christi
Beeville, Texas

358-2181

"Complete Insurance Service"



CENTRAL POWER AND LIGHT COMPANY

110 N. Jefferson
Beeville, Texas



TOP QUALITY USED CARS HARDY MOTORS

DODGE — DODGE DART

We Service All Makes of Automobiles
• 24-HOUR WRECKER SERVICE

310 E. Houston Beeville, Texas 358-3020

—EMERGENCY ROAD SERVICE—



AJ-TV SERVICE CO.

We Sell Parts at Discount Prices
All Types Electronic Repair
COLOR OUR SPECIALTY

Monday Through Saturday—8:30 A.M. to 6:30 P.M.
Authorized Warranty Station—
G. E.—Admiral

612 N. Washington AL CAIATI, USN (Ret.) FL 8-4467

McKENNON'S CITY DRUG

FL 8-2811 Beeville, Texas



THE FABRIC CENTER

358-3215 Beeville 319 N. Washington

Thank you . . .
Students and Faculty
of
Bee County College
for
the contribution you have made
to the growth and culture of
Beeville and Bee County.



The FIRST NATIONAL BANK
OF BEEVILLE
BEEVILLE, TEXAS

Phone 358-1530
Established 1890

P. O. Drawer B
Member F. D. I. C.

**BEEVILLE
PUBLISHING
COMPANY, INC.**

Publisher of the
BEEVILLE BEE PICAYUNE

Office Supplies

Office Machines

Greeting Cards

Desk Accessories

Games

Stationery

111 N. Washington
Beeville, Texas

HENRY EISSLER, INC.

Refrigerators
Air Conditioners
Appliances
Westinghouse • Friedrich



RCA

Beeville, Texas
Phone 358-5580
On Courthouse Square

Joe's
MOTOR SALES

Chevrolet • Buick • Pontiac
Parts and Service

301 S. Washington

Phone: 358-1681



**SCHULZ & WROTEN
PHARMACY INC.**

FL 8-1150
Beeville, Texas



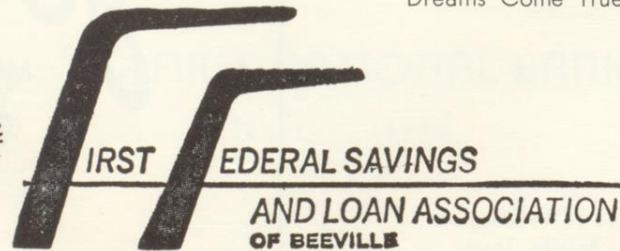
TIRES—BATTERIES—TV's
G.E. APPLIANCES

GOODYEAR
SERVICE STORES

603 N. Washington
FL 8-3441

CONVENIENCE—AVAILABILITY—INSURED SAFETY

"Saving—Not Wishing—
Makes
Dreams Come True!"

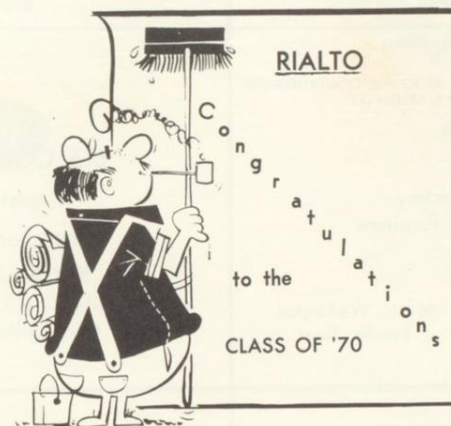


411 E. Houston St. Beeville, Texas PHONE 358-5971

HALL INDUSTRIES THEATRES

Rialto Theatre, Beeville

General Office



ALICE
RIALTO

ARANSAS PASS
RIALTO

BEEVILLE
RIALTO

BEEVILLE
BRONCO DRIVE-IN

BEEVILLE
RIO

KENEDY
RIALTO

KERRVILLE
ARCADIA

KINGSVILLE
TEXAS

SINTON
RIALTO

THREE RIVERS
RIALTO

D & F PHOTO SERVICE

- * Weddings
- * Children
- * Groups
- * Families



"COLOR PHOTOS A SPECIALTY"

358-4444

303 N. Washington

SINKIN'S

Congratulations to the
Class of 1970

PHONE:
358-3115

212 N. Washington
Beeville, Texas

TAILOR MADE
SEAT COVERS

GLASS
INSTALLATIONS

AUTO AIR CONDITIONING
A SPECIALTY

Complete Upholstery
On Automobiles or Furniture

R. L. GORDON
FL 8-3183

901 N. Washington
Beeville, Texas

BEE COUNTY COLLEGE

is grateful to these
merchants for making
this yearbook possible.



Year In—
Year Out
You'll Do Well
With

THE HARTFORD
KNIGHT INSURANCE AGENCY

108 E. Bowie
Phone: 358-4566

serving Beeville since 1929

Congratulations
From

RUTH DAVIS

Corner of Adams and Corpus Christi
for the latest in fashions

REYNOLDS
PLUMBING & SALES
COMPANY

Mechanical Contractors

1704 N. St. Mary's Street
Beeville, Texas

FLetwood 8-3590



Engineering Sales, Service
Plumbing • Heating • Air Conditioning
Sheet Metal • Refrigeration



Beeville, Texas

Phone 358-3346

Compliments of

DR. JOHN L. HESTER
DR. O. C. SCHROEDER

OPTOMETRISTS

Box 1180

Beeville, Texas

FL 8-3218

AMERICAN CAFE

C. M. SMITH EARL L. LEHMAN

SPORTSMANS HEADQUARTERS

214 N. Washington St.
Beeville, Texas

PET SHOP

Pets and
Supplies

Tropical Fish
Aquarium

358-7540

403 N. Washington Beeville, Texas



Phone
358-4466
Beeville

213 North
Washington
Beeville

CONOLY DRUG STORE

PRESCRIPTIONS * * * GIFTS
TOYS * * * PHOTO CENTER



Personalized Prescription Records

200 N. Washington St.
Box 270
Beeville, Texas



"portraits of distinction"

GALLOWAY PHOTOGRAPHY

1211 Houston

Congratulations to Bee County College and All of Its Students



PAUL BRUNER'S

You are always welcome to drop by and visit with us. Shop each department and see the latest in all the fashions and styles.

309 N. Washington Beeville, Texas



APPAREL FOR GENTLEMEN
AND THEIR SONS

204 N. Washington
Beeville, Texas



200 St. Mary's St.
Beeville, Texas

Congratulations and
Best Wishes
to the
Faculty and Students
of
Bee County College
From

WHITE AUTO STORE.

WILLIAM O. McCURDY, Owner
208 N. Washington
Beeville, Texas



Wherever
you're
going...



When you
need a little lift —
depend on Coke



wherever
you've
been



BOTTLED UNDER AUTHORITY OF THE COCA-COLA COMPANY

**DIXIE CREAM
DONUT SHOP**

The World's Finest Donuts
Glazed and Assorted

FL 8-1329 1500 NE Washington

—DEALER—
**MAC'S RADIO & TV
SALES & SERVICE**

101 E. Jones
Beeville, Texas 78102
Phone FL 8-1788



**State Farm
Insurance Companies**
Bloomington, Illinois

**COUNTRY STORE
& MARKET**

1600 N. St. Mary's PHONE 358-4036

**RICHARD E. DEBOLT
Agent**

1700 N. St. Mary's
P. O. Box 461
Beeville, Texas 78102
Phone: 358-1164 Office
358-1164 Residence

CITY CLEANERS

RAMON and EVA GOMEZ
301 West Corpus Christi Street
Beeville, Texas
358-2676

**CARDINAL
BEAUTY SHOP**

WILMA BATCH
Complete Beauty Service
•
Bleaching Specialists
•
Permanent Waving
Tinting—Wig Services

FL 8-2229

San Antonio Hwy.
Between Bronco Theatre and Country Club



**HURST
LUMBER CO.**

Everything to Remodel
Build or Repair
412 N. St. Mary's

KOHLER HOTEL COFFEE SHOP

Specializing in Authentic Mexican and American Food

Daily Luncheons 11:00-2:30 Open 7:30 a.m.-11:00 p.m.

622 West Corpus Christi Street Phone 358-9041

Steaks and Daily Plate Lunches, Seafoods.

Newly Remodeled Private Dining Room
for Banquets, Receptions and Parties.

THE DONUT MAN

113 N. Washington
Beeville, Texas

"come see us"

SAENZ DEPT. STORE

313 N. Washington
358-1800

SAVAGE PEST CONTROL

1811 S. Washington

If You Do It Yourself You'll Still Have Bugs

So Call 358-1604



MERGELES JEWELERS

EXQUISITE
JEWELRY



305 N. Washington

Your jeweler for 35 years

ED WICKER MOTORS

CHRYSLER—PLYMOUTH
JEEPS

COMPLETE TIRE SERVICE
wholesale—retail

GOODYEAR—MICHELIN
FARM BUREAU

413 South Washington

Phone 358-1170

Congratulations Class of '70



SLAY REAL ESTATE

112 E. Houston
Beeville, Texas
Phone: 358-1255



DAIRY QUEEN

1610 N. St. Mary's
Ph. FL 8-2204
Beeville, Texas



"BEST IN BANKING FOR BEEVILLE"

THE COMMERCIAL NATIONAL BANK OF BEEVILLE

ODORLESS CLEANERS
324 North Washington



BALLARD DRUG STORE

JOE RICHARDS, Owner
Phone FL 8-1420 Beeville, Texas 127

SMEJKAL ELECTRIC SERVICE

309 N. St. Mary's

Air Conditioning Lighting Fixtures
Industrial Maintenance Residential Installation

FL 8-1348
Beeville, Texas



FEDDER'S
AIR CONDITIONERS

They will participate and be active
Creating currents
That will change the world—
And make it theirs.
Others will seek contemplation
And scholarship,
Initiating ideas
That will make the world over—
And make it ours.
Too many will be the silent majority
Who will never know the joy
Of involvement.

