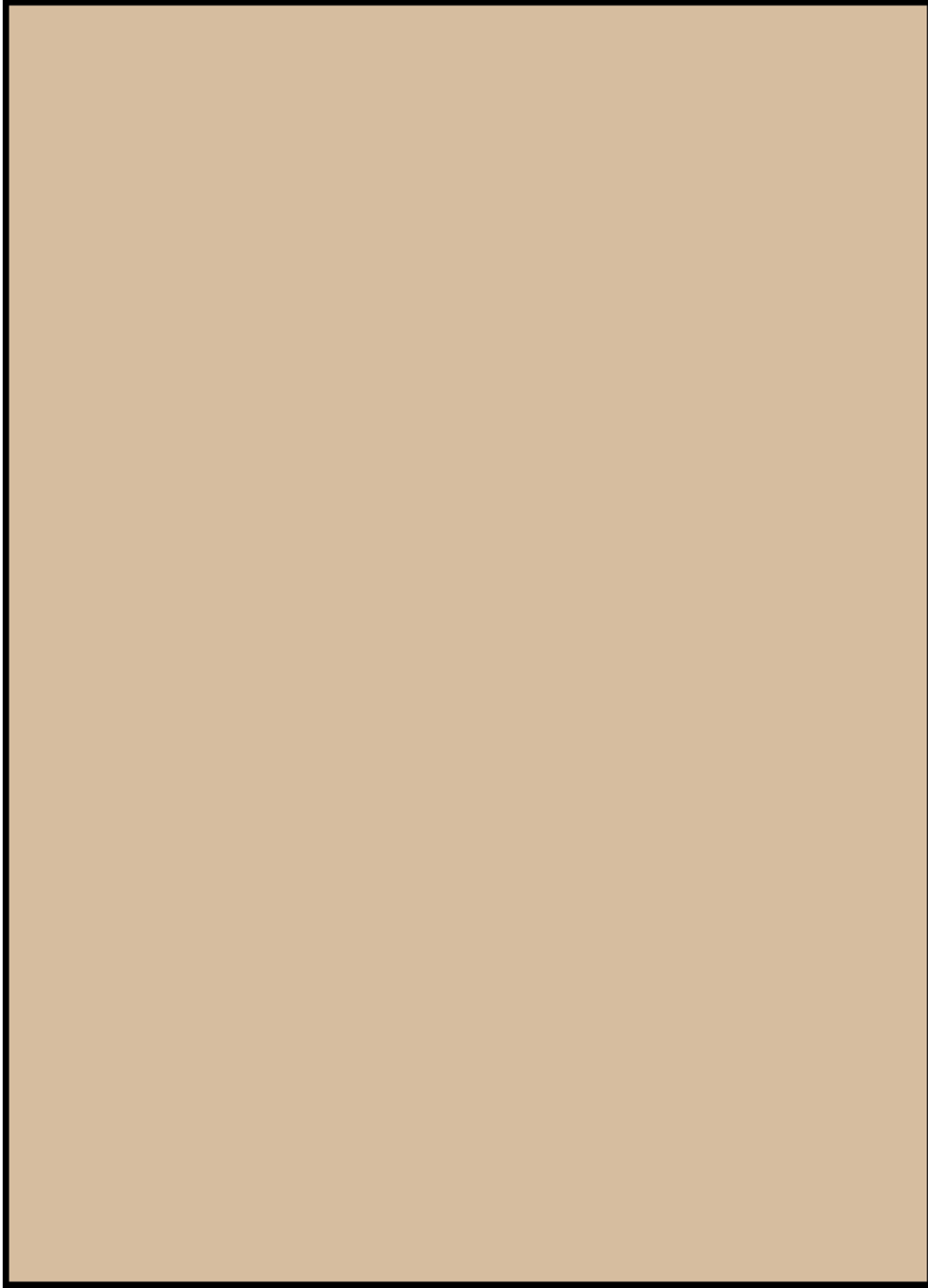
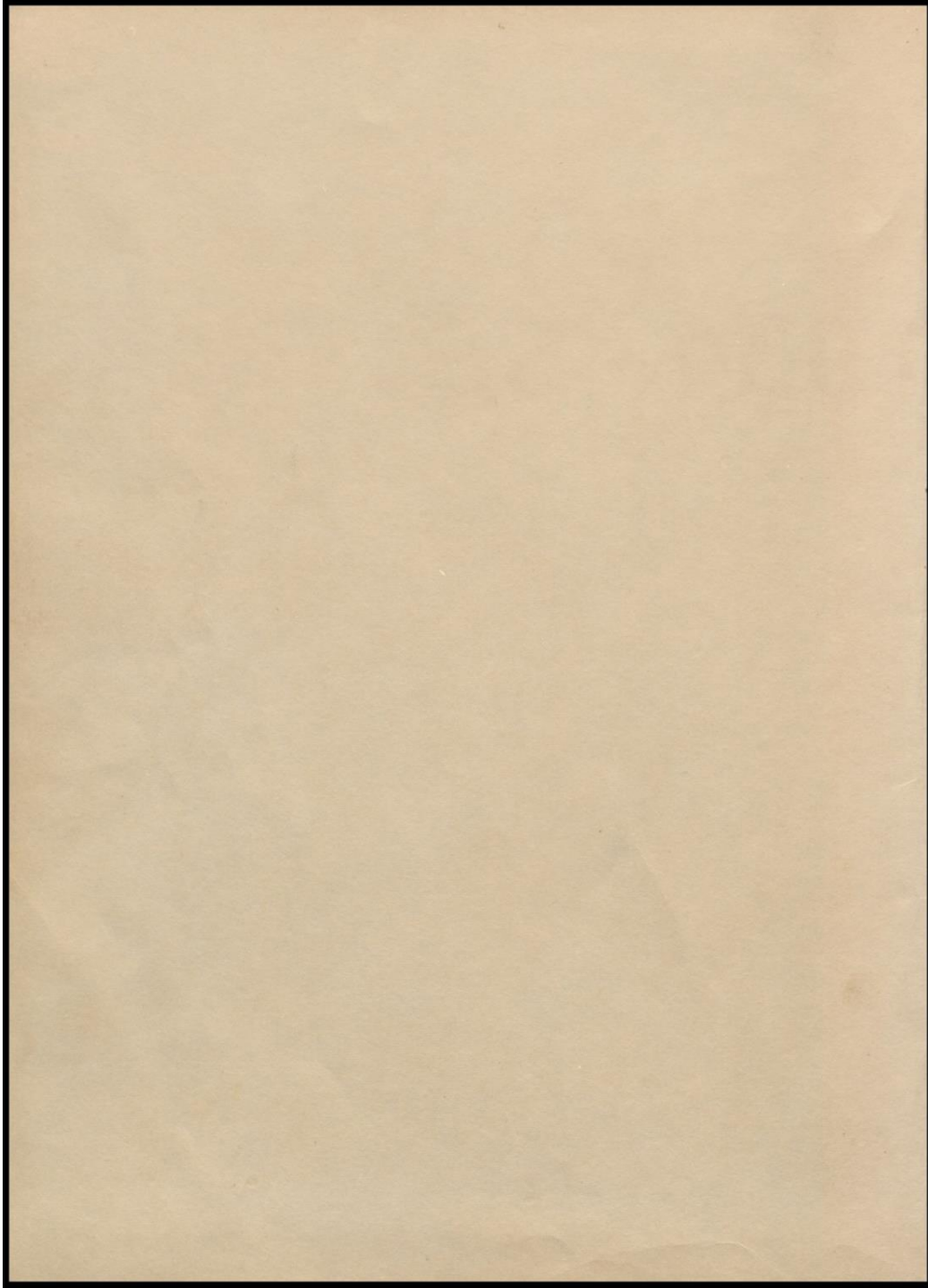




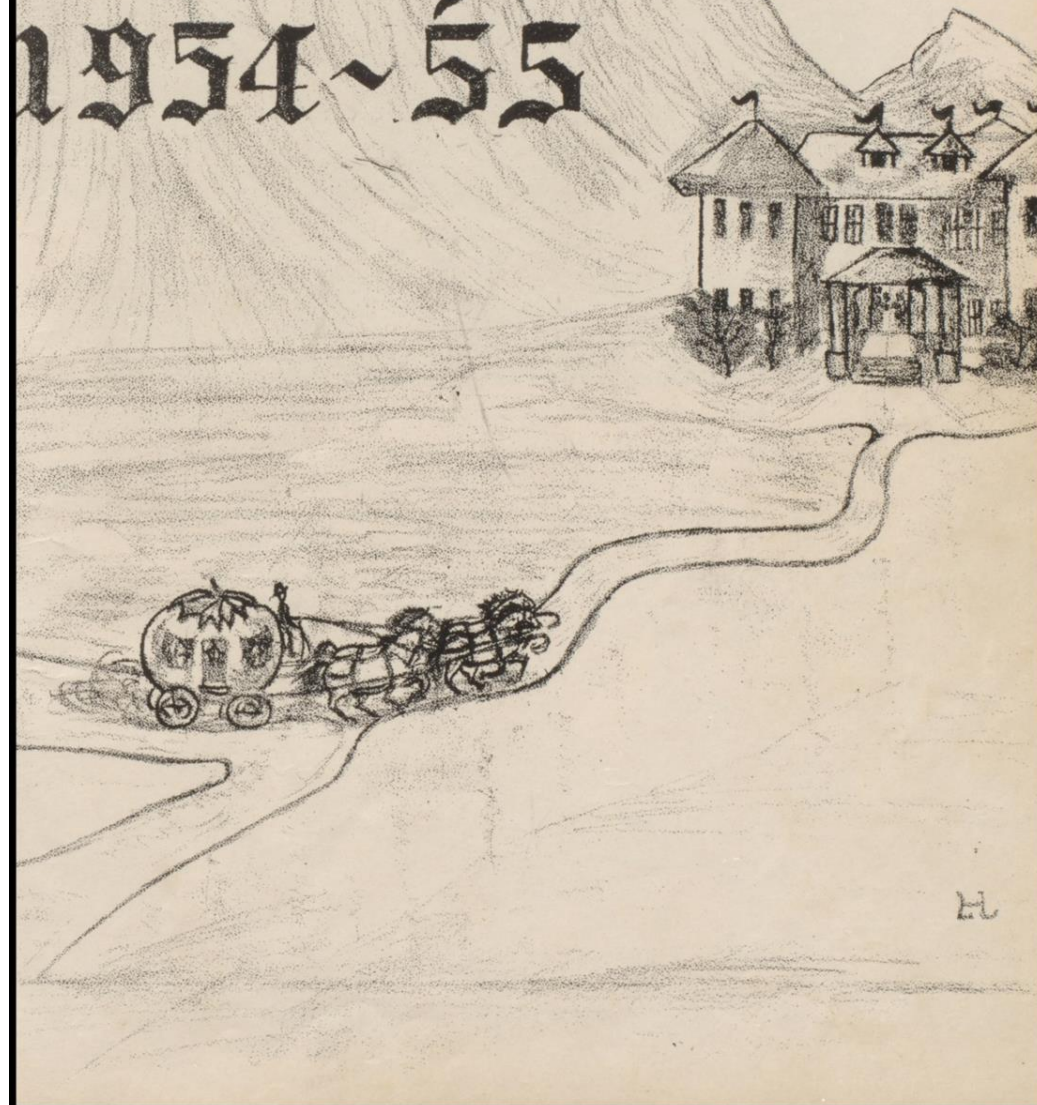
The Trojan







the
Trojan
1954~55



h

FOREWORD



We would like to take this opportunity to express our thanks to all those who have made it possible for us to publish this, the record of our high school years.

We would especially like to thank, along with our advertisers, Mr. Paul Avery of the Bee-Picayune, who greatly aided in taking some pictures for us.

DEDICATION



It is with a feeling of sadness that we, the Annual Staff of 1954-55, dedicate this annual to the spirit of A. C. Jones High School. We are sad to know that this is the last year this building will be used as a high school, but we are glad that progress is being made.

No matter what changes are made through the years, however, this spirit will live forever in the hearts of those who have entered the doors of A. C. Jones High for the sake of learning, and come out ready to take their place in the world.





MR. RAYMOND POWELL



MR. ROCKY REAGAN, JR.



MR. ARTHUR ATHEY



MR. MARION YOUNG



MR. GEORGE MORRILL
Vice President



MR. RALPH JACKSON

S
C
H
O
O
L



MR. K. H. BENETT
President

B
O
A
R
D



P
E
T
E
P
E
T
E
R
S
O
N

F
L
O
Y
D
P
A
R
S
O
N

SUPERINTENDENT'S MESSAGE



This will, in all probability be the last time that I will extend greetings to you from the hallowed walls of the old A. C. Jones High School Building. Future greetings will be extended from our new million dollar high school plant.

Let us depart from our abiding place of almost one-half century happy in the thought that those things we love and cherish must yield to progress; yet saddened by the many memories that surround us in connection with our home for these many years.

This has been a most pleasant and successful school year . . . "Thanks" to a highly superior student body. The victory celebrations this year have far exceeded the despair of defeat.

My hope is that we may continue to grow in understanding, appreciation, knowledge, and faith!

Sincerely yours,

Leoyd W. Parsons

P
R
I
N
C
I
P
A
L
'
S



M
E
S
S
A
G
E

It is with mixed emotions that I write this message to the Annual for 1955. Indeed our hearts are filled with joy and gratitude for the wonderful new high school which we hope to occupy by September, 1955. Each year our students excel in more fields and break records made by students of previous years. Certainly this is an indication that teachers, coaches, and students are improving in skills and techniques.

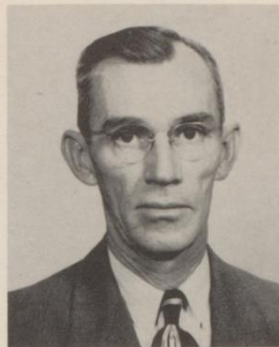
Indeed, we have fond memories folded away in our hearts for "Old A. C. Jones High School," but I am sure that each of us will go out to the new high school with hope, aspiration, and determination to soar to greater heights. With this spirit in the heart of each student, nothing but glory and distinction can come to our high school in the years to come.

Congratulations to the Annual Staff and its sponsor for a job well done in producing this fine annual for 1955.

Sincerely,

J. P. Alley

CECIL ALLEN



Biology, Chemistry

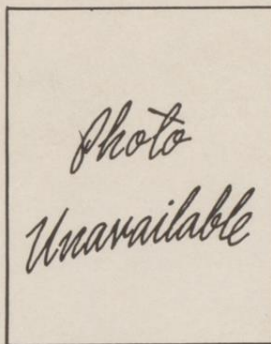
PHILLIP ALLISON



Math, Industrial Arts
Coach
JEAN DUGAT

F
A
C
U
L
T
Y

MRS. BOB BRIGGS



Commercial, English

L. O. ENDSLEY



Science, Drivers
Education



English II

MRS. C. G. FLOYD



English III, IV

GEORGE ELAM



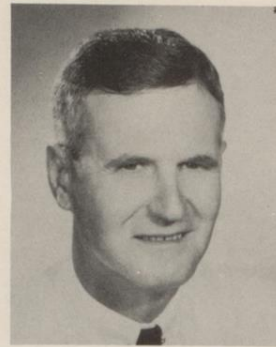
Visual Education
Social Studies

DAVID GREEN



Boys' P.E., Coach

A. R. HATCHER



Vocational Agriculture

HENRY JACKSON



Head Coach, American History

MRS. EDWIN KILE



English I



BARBARA McANELLY



Homemaking

U. R. PFNININGER



Math, Science

HELEN A. PICKETT



Spanish

E. B. PIERSON



Counselor, Science

O. L. STAMEY



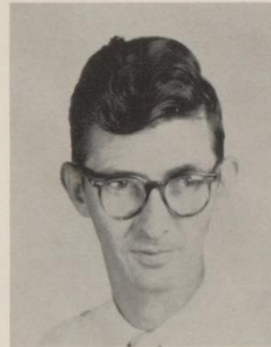
History, Geography

G. E. STARR



Distributive Education

E. H. SULLIVAN



Algebra II
Plane Geometry

OPAL TANNER



Secretary to
Mr. Parsons

FRIEDA VAN DER VEER



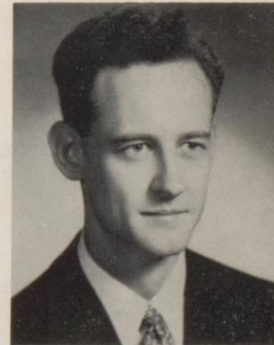
Business Administration

INA WEST



Librarian

DOUGLAS WIEHE



Band, Choral



ALL-SCHOOL FAVORITE

ANNA JOYCE LOTT



ALL-SCHOOL FAVORITE

BILLY BAKER



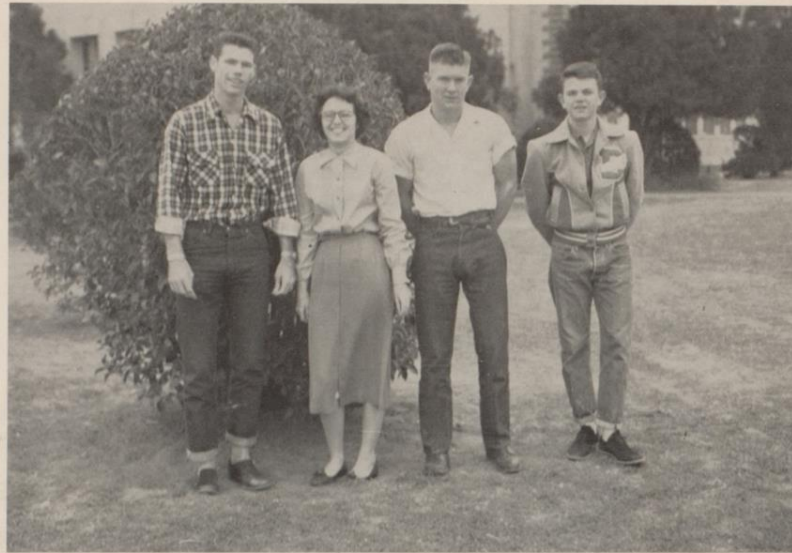
We would like to take this opportunity to express our love and admiration for a truly wonderful girl. Shirley, we consider it a privilege to have known and worked with you and it is our sincere prayer that God will be with you always.

THE SENIOR CLASS
1954-55

IN APPRECIATION

Seniors





President, Coleman Mulnix; Secretary, Mary Gaines; Treasurer, Herbert Whalen;
Vice President, Jerry May; Secretary, Nancy Jenkins.

COLORS—Blue and Silver
FLOWER—Sweetheart Rose
MOTTO—"Onward Upward"
SONG—I Believe

Sponsor
LOLA BONNER



Sponsor
ED SULLIVAN





LEE ARCHER
FFA 1-3; DE Club 4.

LYNN ARCHER
Eric

Band 1-3; Baseball 2; Junior Play;
Youth Day 3; Trojan Staff, Assistant
Make-up Editor.

BILLY BAKER

Football 1-4, Lettered 1-4; Student
Council 1; Band 1, 2; Basketball 1-4,
Lettered 1-4; Sophomore Favorite; All-
School Favorite; FHA Sweetheart 1;
Nominee Fish, Junior Most Handsome,
Most Athletic, and Senior Favorite;
Track 1-3; Who's Who; All-District
First Team Football 4.

BEATRICE BALDILLET
FHA 1-3; Volleyball 1; DE Club 4.



MARGARET ALEENE BAST
FHA 1; FTA 3, 4; Library Club 1-3;
Trojan Staff, Circulation Manager 4;
Pep Club 3; Office Staff 4.

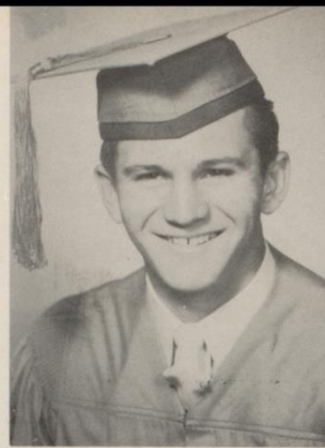
VIRGIL BLEVINS
Football 3, 4, "B" Team 3, "A" Team
4; Basketball 3, 4; Baseball 3, 4;
Track 3, 4; Key Club 3.

JACK C. BOND

Football 2-4; Basketball 2; Baseball 3; Track 3; Tennis 2, 3; Annual Staff 2; Trojan Staff, Art Editor 4; Student Council 4; Band 1, 2; Choir 1, 2; Nominee Junior Favorite; Junior Play; Stamp Club 1.

VIRGINIA BUTTS

FHA 1-4, Pianist 1; Spanish Club 1, 2; Band 1-4, District 1-2, Regional and State 2; Drum Major 3, 4; FTA 3, 4, Vice President 3, Rep. 4; Student Council 3, 4; Choral 4; Nominee Fiesta Queen; Prom Committee 3.



Picture
Not
Available



JUANITA COLLINSWORTH

Neter

Library Club 1-3, Rep. 1; FHA 1-4; Stamp Club Parliamentarian 1; Youth Day 3; Pep Club 3, 4.

VIOLET COX

Vi

FHA 1-4, Song Leader 2; Choral 3, 4; Dinner Belles 3, 4, Secretary 4; Library Club 2-4, Treasurer 2, 3, Historian 4; FTA 3, 4, Secretary 3; Volleyball 3; Pep Club 3, 4; Office Staff 4.

ELDRIDGE CUSTER

Band 1-3, District 1-3, Regional 1-3, State 3, "I" Rating on Solo 1-3, Student Director 1-3; Stamp Club 1; Safety Patrol 2; Student Council 2, Parliamentarian; Key Club 2-4, Vice President 3, Song Leader 4; Junior Play; National Honor Society 2-4; President Junior Class; Who's Who; Most Outstanding.

KAY FRANCES DAVIS

Band 1, 2, Tumbler 1, 2, District Twirler 1, 2; FHA 4; HE Class Rep. 4.





ELVIRA DE LEON

Vera

FHA 1; 2; Choral 1; Pep Club 3, 4;
DE Club 4, Sweetheart.

PAULINE DE LEON

Poly

Baseball 1; Choir 2-4, "I" on Solo 3;
Secretary to Flournoy School 2; Talent
Show 1; Pep Club 3, 4; FHA 2-4.

JEANETTE DURANT

Net

Pep Club 3, 4; Library Club 3, 4;
FHA 1-4; Dinner Belles 3.

CLAUDIA FUDGE

Claude

Spanish Club 1, 2; FHA 1-4, Treasurer
3, Public Relations 4; FTA 3, 4, Sec-
retary 4; Pep Club 3, 4; Office Staff 4.



MARY GAINES

Annual Staff 1-4, Business Manager 2,
Editor 3, 4; Student Council 1-3; Band
1, 2; District Band 2; Nominee Fiesta
Queen 4; Trojan Staff, Make-up Edi-
tor 4; Quill and Scroll 3, 4, Vice
President 3; National Honor Society
3, 4, Secretary 4; Junior Play; Senior
Class Rep.; Who's Who; Most Out-
standing.

ARMANDO GARCIA

FFA 1, 2; DE 4.

MIKE GARCIA

Grapefruit

Baseball 1, 2; DE Club 3, 4; Nominee
FHA Sweetheart 3.

IRENE GOVELLA

Winnie

FHA 1-4; Pep Club 3, 4; Choral 4.



CYNTHIA ANN GILBRETH

Tennis 1; Choral 1; Annual Staff
2-4, Business Manager 3, 4; FHA 1-3,
Parliamentarian 2, Historian 1; Fish
Favorite; Nominee All-School Favorite;
Nominee Fiesta Queen; Cheerleader
2-4, Head 4; Girls' State; Student
Council Treasurer 4; FHA Treasurer
3, President 4; Who's Who; Quill and
Scroll 3, 4; Junior Play; Library
Club 3; Stamp Club 3; Trojan Staff
Managing Editor 4.

GLORIA GODKIN

Baseball 1, 2; Library Club 1-4; FHA
1, 2; Office Staff 3, 4; Pep Club 3;
FTA 4; Choral 2; Trojan Staff As-
sistant Editor.

AUTRY GORDON

Gordo

Pep Club 3; Choral 1; DE 4; Safety
Patrol 1, 2; Junior Play; Trojan Staff,
Assistant Make-up Editor 4.

SANDRA GORHAM

Sandy

Basketball 1, 4; Volleyball 1; FHA
1-4; Pep Club 4.





SHIRLEY HAMILTON
Hamilton

Band 1-4; Volleyball 1-4; Baseball 1;
Basketball 3, 4, Co-Captain 4; Tennis
4; Most Athletic; Prom Committee 3.

EVELYN HENRY
E Henry

Basketball 1-4, Co-Captain 3; Volley-
ball 1-4; Tennis 1-4; Nominee Fish.
All-School, Most Athletic, Miss United
Fund; Soph Favorite; Miss Beeville 3;
Football Sweetheart 3; Cheerleader 3,
4; Band 1, 2; Trojan Sports Editor 4;
FTA Vice President 4; Who's Who.

HERMENEGILDO HERNANDEZ
ROBERT LEE HILL



BARTELL ISRAEL
Ducky

FFA 1-3; DE Club 3, 4; Nominee
FHA Sweetheart 3; FFA Song
Leader 2.

BOBBY JEMISON

FFA 1-4, Second Vice President 1,
Secretary 2, 3, President 4; Trojan
Staff, Assistant Production Manager.

NANCY JENKINS

Student Council 2, 3; Band 1-4, Majorette 3, 4; Annual Staff 2; Lions Club Sweetheart 2-4; Nominee Soph, Most Outstanding, Most Beautiful; Secretary Junior and Senior Class; Fiesta Queen; Senior Favorite; Editor-in-Chief of Trojan.

BOBBY JOHNSON

Jaguar

Basketball 1-4, Lettered 3, 4; Football 1-3, Lettered 3; Tennis 3; Volleyball 4; Golf 4; Choral 3; Youth Day 3, 4.



BILLY KIRK

FFA 1-3, Reporter 3, Chapter Conducting Contest 3.

MYRADEL KIRK

Little Bit

FHA 1-4; Library Club 1-4; Pep Club 3, 4; Office Staff 4.

BILLYE KLETT

Egar

Band 1-4; Volleyball 3, 4; FHA 1, 2, Historian 2; Library Club 1-3, Historian 2; Annual Staff 4; Trojan Staff 4; Stage Manager Junior Play; Prom Committee.

LARRY KNOCKE

Key Club 3, 4, Reporter 4; Junior Play; Senior Projects Committee; Trojan Staff, Assistant Feature Editor 4.





DAVE LAIN

Football 1-4, "B" Team 1, Res. 2,
Lettered 3, 4; Letterman's Club 3, 4;
National Honor Society 4.

LUCILLE LAUGHTER

Tennis 1, 2; Volleyball 3; Band 1-4,
District 1-3, Regional 2, 3, State 3;
"I" Rating on Solo 2, 3; Junior Play;
National Honor Society 3, 4, President
4; Nominee Most Outstanding.

ADELMIRA LEAL

Adel

FHA 1-4; Choral 3, 4; Pep Club 3,
4; Baseball 1; Youth Day 3.

RONALD LEHMAN

Big R

FFA 1-4, Parliamentarian 2, Vice
President 4; Football "B" Team 1.



LUCILLA LOPEZ

LuLu

FHA 4; Dinner Belles 3; DE Club 4.

ANNA JOYCE LOTT

Sister

Band 1-4, Majorette 3, 4; Student
Council 1, 2, 4, Corresponding Secre-
tary 4; Annual Staff 2; Nominee Fish,
Soph, Junior, Senior, Favorite, Most
Beautiful, Miss Beeville 3, Miss United
Fund 4; FFA Sweetheart 3, District
and Area Sweetheart; All-School Fa-
vorite; Who's Who; Fiesta Queen 3;
FHA 1; Basketball 2-4; Spanish Club
1, 2.

TOM LUCE

Key Club 4; FFA 2-4; Football 1, 2;
Basketball 1; Baseball 1, 2; Transfer
from Alice 3.

RUTH LUNA

FHA 1, 2; Pep Club 3, 4, Vice Presi-
dent 4; Library Club 1; Baseball 1;
Elementary Office Staff 3; Youth
Day 3.



CAROL MALONE

Spanish Club 1, 2; Band 1-4, Majorette
3, 4; Student Council 3, 4, Vice Presi-
dent 4; Junior Class Rep.; Junior
Favorite; Volleyball 2-4; Basketball 3,
4; Tennis 3; National Honor Society
3, 4, Rep. 4; Trojan Staff Business
Manager; Most Beautiful; Nominee
Senior and All-School Favorite; Who's
Who; Office Staff 3; Fiesta Queen
Nominee.

SHIRLEY MALONE

FHA 1, 2; Band 1-4; Manager Girls'
Basketball Team 4.

EMMET MARTIN

Band 1, 2; District Band 2; FFA 2-4;
Football "B" Team 3.

JEROME T. MAY
Jerry

Key Club 2; Basketball 2, 3; Baseball
2, 3; Trojan Staff 4; Student Council
4; Prom Committee; Nominee All-
School Favorite; Vice President Senior
Class; Cheerleader 4; Youth Day 3.

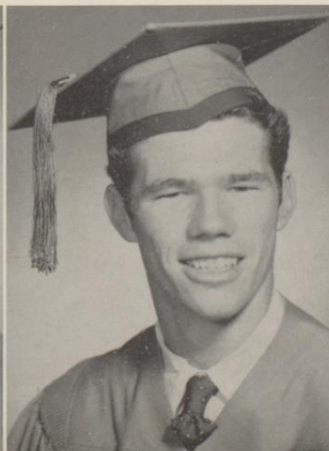




DOMINGA MARTINEZ
Minga
Volleyball 1; Baseball 1; FHA 1-3.
BILL MEIDER

CHARM MILLER
Junior Declamation 1; Tennis 1, 3;
Stamp Club 3; Basketball 3, 4; Pep
Club Vice President 3; Annual Staff
3, 4, Assistant Editor 4; Trojan Staff,
Publicity Manager; Junior Play;
Who's Who; Prom Committee; Youth
Day 2.

JOE MORENO
Chepo
Basketball 1, 2; Football 1-3; FFA 1,
2, Rep. 1; Youth Day 3; DE Club
President 4; Delegate to State Con-
vention.



JIM MOODY
Nominee Junior Favorite; DE Club
Vice President 4; Transfer from Paw-
nee 3.

COLEMAN MULINIX
Rick
Basketball 1-4, Lettered 3, 4; Base-
ball 1-4, Lettered 3, 4; Key Club 2-4,
President 4; Safety Patrol 1; Youth
Day 1, 2; Homeroom President 2;
Master of Ceremonies Junior Play;
Vice President Junior Class; President
Senior Class; Trojan Staff Radio Edi-
tor; Letterman's Club Secretary 3, 4;
Nominee All-School, Most Outstand-
ing, Junior and Senior Favorite; Who's
Who.

GRACE CHRISTINE MUSSETT

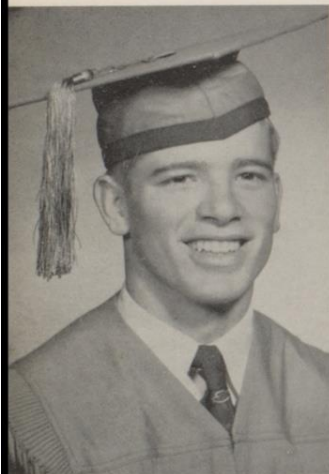
Gracie

Choral 1, 2; Youth Day 3; Prom Committee; Trojan Staff News Editor; Dinner Belles 4. Rep.; FHA 4; Classroom Secretary.

BARBARA NELL MCGREW

McGrew

Choral 1, 2; FHA 3, 4; Dinner Belles 3, 4; HE Class President 4; Prom Committee.



ROY MCKEE

Buddy

Football 2-4, Lettered 3, 4; Basketball 2-4, Lettered 2-4; Track 2-4, Lettered 2-4; Baseball 3, 4, Lettered 3, 4; Fish Favorite; Most Athletic; Nominee Soph, Senior All-School, Most Handsome; Letterman's Club Vice President; Annual Staff 4; Boys' State.

CHARLES McMAHON

Charlie

Football 2-4, Lettered 3, 4; Baseball 1-4, Lettered 3, 4; FFA 1, 2; Track 1, 2, 4; Basketball 3; Tennis 4; Nominee Most Athletic; Trojan Staff; Letterman's Club.

MARIA OCHOA

Mere

FHA 1-4; Choral 1; Spanish Club 2; Pep Club 4; DE Club 4.

MARY MARGARET NUTT

Nutty, Maggie

Choral 2; Band 1-4, District 2, 3, Regional 2, 3; National Honor Society 2-4, Treasurer 4; Library Club 3, 4, Secretary 4; Youth Day 2; FTA 3, 4; One-Act Play 1; Senior Declaration 1, 3.





FRED PATTY

Football 1-4, Lettered 3, 4; Track 1-4;
Letterman's Club 3, 4; Prom Committee 3.

JIMMIE PETERSON

Moose

Football 2-4, Lettered 3, 4; Basketball 2, 3; Letterman's Club, Sergeant-at-Arms; Prom Committee; Trojan Staff Assistant Sports Editor.

JERRY PLACHY
FFA 1-4, Treasurer 4, Lone Star Farmer 4; Track 2; Choral 2.

PAUL PLACHY
FFA 1-4, Parliamentarian 4.



DEWAYNE POLLARD

Sot

Band 1, 2; Football 3, 4, Letter 4.

CHARLES QUINN

Band 1-4; Prom Committee; Baseball 3; Basketball 3; Junior Play; Projects Committee 4; Transfer from Corpus Christi 3.

JOY REDDELL
Joy-Joy

Student Council 4; National Honor Society 3, 4; Library Club 3, 4, President 4; FTA 3, 4; Librarian 4; FHA 3; Pep Club 3, 4; Volleyball 3, 4; Senior Projects Committee; Youth Day 3.

MARTHA REYES
Marta

FHA 1-4, Delegate to District Meet 1, Secretary 3; Dinner Belles 4; Pep Club 3, 4; FTA 3, 4; Youth Day 2, 3; Choral 4; Baseball 1; Volleyball 3; Basketball 1-4, Lettered 3; Nominee Most Athletic.



WILMA ROBINSON
DE Club 3, 4; Pep Club 3, 4; FHA 1; Assistant Art Editor Trojan; Visitors' Week Hostess.

ANTONIA ROCHA
Tony
FHA 1-4.

REBECCA RODRIGUEZ
Baseball 1; FHA 1, 3, 4; Pep Club 3, 4, Secretary 4; Choral 3, 4.

ARTHUR ROMINE
Romine
Football 2, 3, Lettered "B" Team 2, 3; Baseball 1, 2.

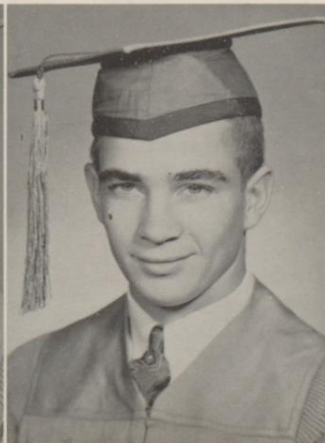
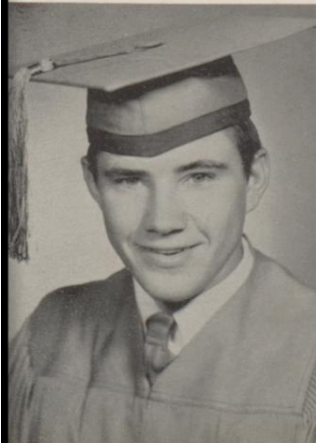
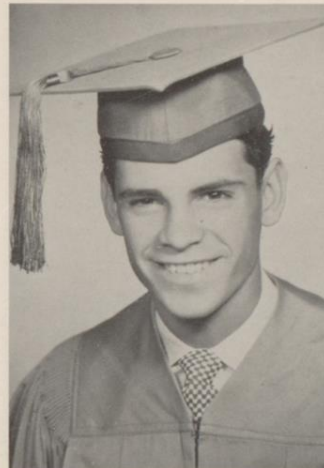




JOHN L. ROSS
Big John
Safety Patrol 1; DE Club 3, 4.

MARY FRANCES ROLLINS
DE Club Rep. 4; Nominee Most
Beautiful and DE Sweetheart; Trans-
fer from Jacksboro 4.

JOHNNY ROSSI
Choral 2-4; Golf 2-4, District 3.
LOUISE SENSEMAN



CHARLES SEARCY
Bruce
FFA 3; DE 4; Transfer from George
West 3.

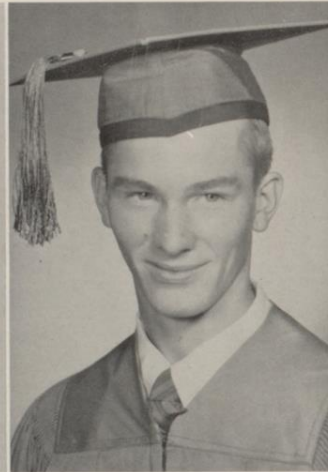
GEORGE SEARCY
Sapp
FFA 3, 4, Sentinel 3; Football "B"
Team 3; DE 4.

LUTIE SHROPSHIRE
Annual Staff 2, 3; FHA 1; Pep Club
3; Tennis 3; Homeroom Secretary 3;
Trojan Staff Assistant Feature Edi-
tor 4.

AUGUST SMEJKAL
Gus



Picture
Not
Available



WALTER SMITH
Choral 2; FFA 1-4, Treasurer 4; Foot-
ball 1-4, Lettered 3, 4; Basketball 1;
FHA Sweetheart 3; Letterman's Club
3, 4; Production Manager Trojan
Staff 4.

EDDIE STEPHENSON
Student Council 2-4, Parliamentarian
3, President 4; Key Club 2-4, Secre-
tary 3, Vice President 4, Lieutenant
Governor 4; One-Act Play 2; Junior
Play 3; Baseball 1, 2; Safety Patrol
1; Band 1-3, District 2, 3; Prom Com-
mittee 3; Nominee Most Outstanding;
Youth Day 2, 3; Who's Who.

JAMES RAY STEWART
Band 1-4, District 2, 3, Regional 2, 3;
One-Act Play 1; Declamation 1; Jun-
ior Play 3; Prom Committee; Key
Club 3, 4, Secretary 4; Youth Day
1-3; Victoria Music Festival 2.

LEO THOMPSON
Basketball 1, 3, 4, Lettered 3, 4; Base-
ball 1-4, Lettered 2-4; Football 3, 4,
Lettered 3, 4; Football Manager 1;
Key Club 2, 3; Letterman's Club 3,
4; Tennis 3, 4.





OSCAR TRAVLAND

Student Council 3, 4, Rep. 4; Key Club 2-4; Annual Staff 1-4; Quill and Scroll 3, 4; Band 1-3; Choral 4; Junior Play.

RAMONA TREVINO

FHA, Treasurer 1, Rep. 2, 3; Office Staff 1; Choral 1, 2; Volleyball 1, 2; Softball 1; Basketball 3; Library Club 2-4; Pep Club 3, 4, President 4; Home-room Officer 1, 2; Trojan Staff Assistant News Editor; Youth Day 2, 3.

JOE TRIAL

Homeroom President 2; Football 3, 4, Lettered 4; Letterman's Club 4; Key Club 2-4; Safety Patrol 1; Basketball 3.

JOHN WANDLESS

DE Club 4; Most Handsome; Transfer from W. B. Ray Corpus Christi 4.



CAROLYN WARD

FHA 1-4, Rep. 2; Spanish Club 1, 2; Student Council 1, 2; Annual Staff 2-4, Layout Editor 4; Pep Club President 3; Quill and Scroll 3, 4; Trojan Staff Feature Editor; Manager Girls' Basketball Team 3; FTA 3, 4; Youth Day 2, 3; Choral 4; Prom Committee; Junior Play.

HERBERT WHALEN *Herb*

Key Club 3, 4; Football 1-4, "B" Team 2, Lettered 3, 4; Letterman's Club 3, 4; Baseball 2-4; Senior Class Treasurer; Boys' State 3; Second Team All-District Football 4.

SHIRLEY WOODALL
Band 1-4, Majorette 3, 4, Regional
Twirler 3, 4; FHA 1, 2; Prom Com-
mittee; Driver's Education Conven-
tion 3; Mum Committee 4.

LOUIS YOUNTS



Picture
Not
Available



KENNETH ZIMMER
FFA 1, 2; DE Club 3, 4.
ROBERT VANN

Juniors





President, Byron Bradfute; Vice President, Karen McKinney; Treasurer, Mary Beth McKinney; Secretary, Lou Anne Parsons; Reporter, Patricia Morrow.

COLORS—Red and White

FLOWER—Red Carnation

MOTTO—God Helps Them Who Help Themselves

SONG—"May the Good Lord Bless and Keep You"

Sponsor
INA WEST



Sponsor
O. L. STAMEY



Alice Ballard
Bobby Baltazar



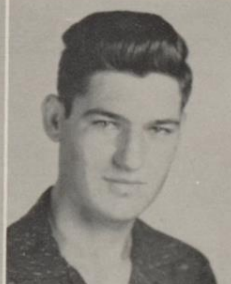
Norma Jane Barber
James Billings



Patricia Brown
Byron Bradfute



Shirley Brown
Mac Buchanan



Dennis Butts
Peggy Carlisle





Frank Carpenter
Beverly Cash



Diana Castro
Patricia Chesshir

Dean Chamrad
Pete Collinsworth



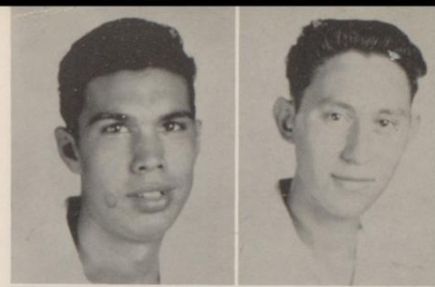
Don Crockett
Alice Culpepper



Patricia Daum
Clifton Downes



Albert Espinosa
Armando Flores



Jerry Ford
Darlyne Franke



Darlene Fuson
Alice Garcia



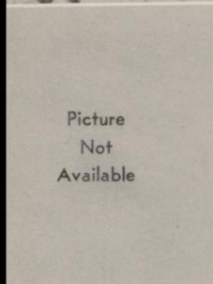
Arthur Garcia
Baldemar Garcia



Leonard Garza
Jessie Garza



Joe Garza
Johnny Garza

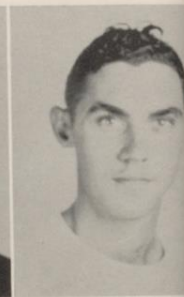


Picture
Not
Available



Richard Garza
Ted Glover

Robert Guerrero
Travis Hobbs



Gordon Hamby
Jimmy Hancock



Joe Hamm
Lochie Lu Harper



Wayne Hatcher
Mary Henry



Gene Herod
Bruce Hill



Johnnie Hirst
Arlene Holland



Margaret Huser
Katherine Hutchins



Beda Israel
Alice Ivey





Ralph Jackson
Reagan Jordon



Barbara Jostes
Johnny Kircher

Dorothy Koenig
Jay Lawson



Liborio Lozano
Joyce McClelen



Barbara McGill
Mary Beth McKinney

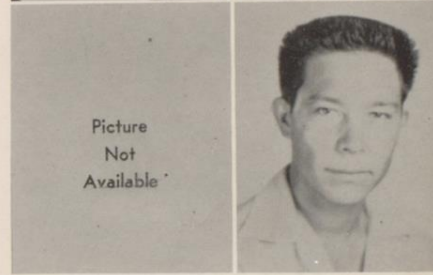


Karen McKinney
Patsy McMahon



Auturo Martinez
Ernest Martinez

Picture
Not
Available



Uvaldo Mayorga
Joe Matocha



Fermin Meza
Patricia Morrow



Joyce Neuhaus
Jane Orchard



Picture
Not
Available

Cheryl O'Shields
Vickie Parsons



Lou Anne Parsons
Agapito Presa

Allen Powell
Mike Pringle



Pete Reyes
Beverly Rider



Andrea Rodriguez
Angel Rodriguez



Ronnie Rowland
Carolyn Rosebrock



Lawana Routh
Norma Jane Range



Picture
Not
Available



Lloyd Self
Bernie Sandoval



Tommy Searcy
Patty Smith

Picture
Not
Available



Joyce Stevens
Eugene Sweet



Picture
Not
Available

Gayle Taylor
David Thompson



Troy Thurmond
Lynne Timon

Eleanor Tolliver
Aurelio Trevino



Maria Velasquez
Abel Vargas



David Vargas
Robert Villegas

Picture
Not
Available



Ruth Warren
Billy West



Barbara Wright
Charlie Wyatt



Wayne Wyatt
Anthony Wingenter



Jay Young
Virgil Youngblood



Anna Lou Zerda

NOMINEES



*Most Beautiful and
Most Handsome*



F.H.A.



Senior Favorite



D.E. Club



Most Athletic

Sophy





Ann Allen
Don Armstrong
Billye Rose Bell



Roberta Bertram
Johnnie Bond
Donald Briggs

Jamie Brown
Patty Byars
Virginia Chew



Olga Contreras
Alice Cortez
Camilla Council



Linda Cox
Gale Daley
Jennie Davila



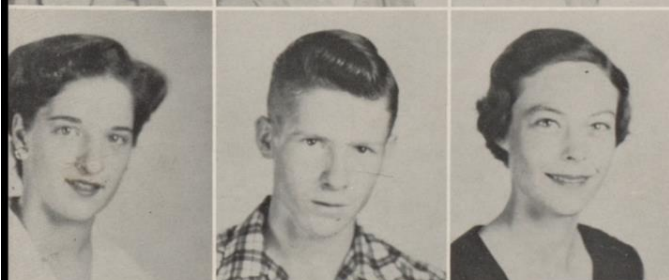
Marion Davis
Bill Davis
Bobbie Deason



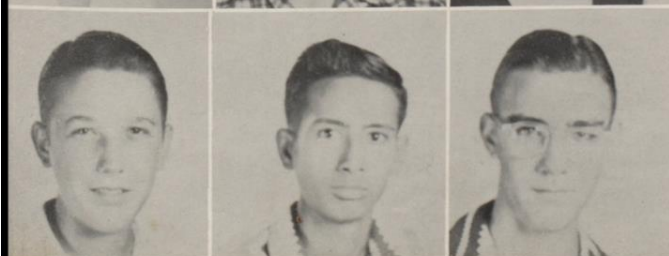
Charles Dorsey
Joyce Doubrava
Loretta Downes



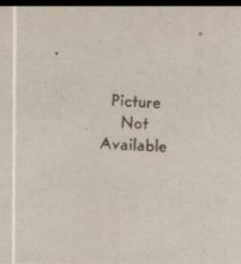
Steve Edgmon
Mary Helen Fairly
Ted Feri



Pauline Ford
Wayne Foster
Tommie Gay Fridge



Johnny Galloway
Richard Garcia
Stanley Geisler



Olga Gonzales
Sobeida Guerrero
Natalio Guerara



Jimmie Gunn
Sharon Haugen
Ann Hebert

Delvin Holland
Becky Hopkins
Myrtice Huebner



Rose Huser
Joan Imes
Ruth Jones



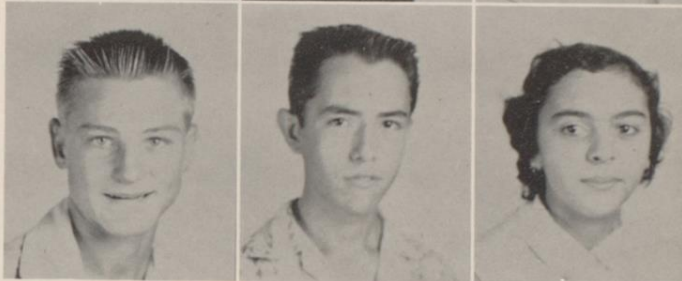
Virginia Kennedy
Evelyn Kidd
Kay Kinkler



Charles Isbell
June Lain
Laverne Laughter



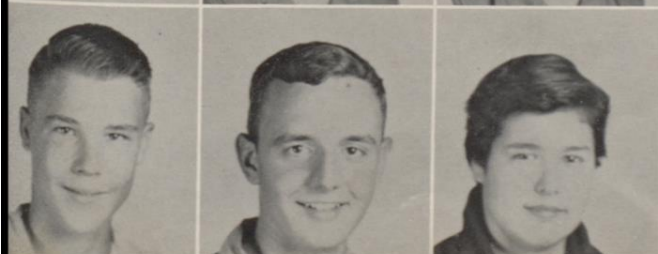
Tom Lawson
Tony Leal
Loretta Lopez



Ella Mayorga
Rudy Martinez
John Matocha



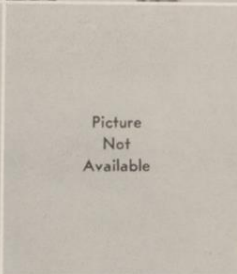
Margaret Maxwell
Jolyne Mergele
Patsy Mixon



Glenn Moehring
John Monroe
Rosa Moreno



Robert Juarez
Jeannie Morse
Lela Mae McClen



Judy McMillion
Lloyd Newton
Jimmy Nelson

Theodora Ochoa
Tommie Palmer
Dorothy Penewitt



Joyce Peters
Anna Plachy
Deloy Pollard



Angelina Ramirez
Olga Ramirez
Jimmie Reagan



Billy Reid
Sue Roberts
Bettie Joe Roemer



Billie Lou Roemer
Paul Romine
Sam Samford



Petra Saucedo
Joe Schlein
Mildred Sehlke



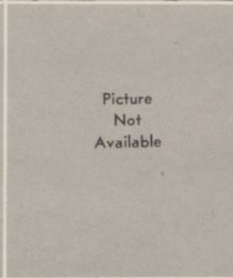
Wilbur Seidel
Richard Shanks
Vera Lee Shook



Philip Silvas
Marshall Sinor
Frank Smejkal



Marilyn Smith
Nancy Smith
Shirley Stevens



Picture
Not
Available



Robert Stewart
David Vargas
Ramona Valdez

Robert Villegas
Gary Warnica
James West



Morris White
Jack Wilder
James Williams



Mary Williamson
Betty Wright
Peggy Wyatt
Carolyn Wyckoff



Fish





Bobby Aguilar
Cruz Alaniz
Kay Allen
Patsy Allen



Lolita Allison
Joanne Baker
Robert Balcillez
Eudelia Barrera



Bunky Beasley
Linda Beck
Jim Blackmon
Roy Blevins



Darlene Boethel
Loland Booth
Louise Boscamp
Judy Burgoon



Mary Jo Butler
Roberta Butts
Norma Bryer
Jo Ann Bynum

Lorenzo Cantu
Isidoro Cantu
Sylvia Cantu
Mary Alice Chapa



Donald Chamrad
Hortencia Contreras
Don Culpepper
Tommy Custer



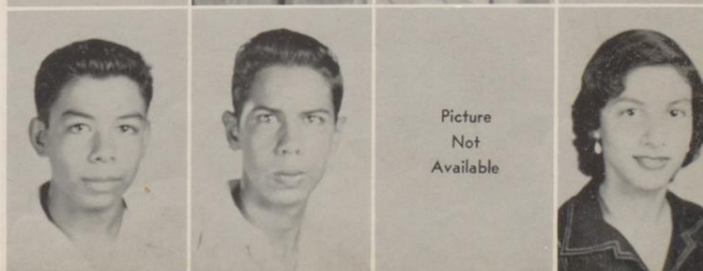
Mickey Dougherty
Allen Dunn
Fred Espinosa
Pat Eubanks



Herbie Fitts
Cora Ann Ford
Walter Fuller
Adelaida Garcia



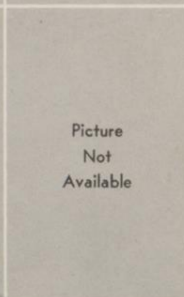
Jasper Garcia
Israel Garcia
Manuel Garcia
Mary Lou Garcia



Picture
Not
Available



Adelaida Garza
Ben Gonzales
Glenn Gilbert
Allen Givens



Ottis Gold
Oscar Gorham
Emilio Granado
Reynaldo Granado



Sondra Harris
Margaret Hatcher
Hilario Garza
Bobbie Jo Hayes



Raymond Hendley
James Henrichson
Ramon Hernandez
James Holton



Douglas Hutchins
Etta Israel
Patty Isaacks
John Wayne Johnson

Eddie Jones
Anselmo Juarez
Benny Keller
John Kelly



Picture
Not
Available



John Lewis
Gaynell Loessin
Lupe Lopez
Ernest Loya



Jean Luthringer
Macario Madrigal
Dick Mabray
Ann Malone



Picture
Not
Available



Pat Martin
Adelina Martinez
Chris Martinez
Guale Martinez



Picture
Not
Available



Juanita Martinez
Oscar Martinez
Raul Medina
Lionel Mendoza





Gary Mills
Rosendo Molina
Sylvia Moreno
Robbie Morse



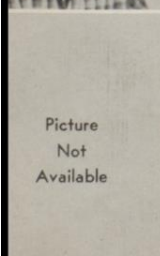
Bobby Moya
Mike Munoz
Eglantina Murray
Charles McCameron



John McElroy
Mary Ann McGilvray
Oralia Naranjo
Johnny Nichols



Terry Noble
June Parchman
Cruz Paredes
Patty Partlow



David Perez
Minerva Perez
Raymond Pettit
Leon Powell

Picture
Not
Available

Ronnie Pringle
Kenneth Prince
Peggy Prinz
Gwen Pugh



Adelfa Ramirez
Lupe Ramos
Ray Ramos
George Rayburn



Mary Bell Reagan
Reuben Reyes
Glenna Rider
Cloyd Rider



Vernon Rider
Bobby Robinson
James Rollins
Ermila Rojas



Picture
Not
Available

Sue Routh
John Rowland
Robert Ruiz
Mary Lou Sanchez





Picture
Not
Available



Cheo Sandoval
James Self
Frances Searcy
Paul Sellers



Paul Shamberger
Homer Soliz
Rudy Soliz
Georgann Spikes



James Sullivan
Connie Strelczyk
Weldon Terry
Y. Vonne Thomas



Mary Kay Thornton
Alfonso Tijerina
Margaret Tolliver
Genaro Trevino



Boyce Vann
Barbara Van Allen
Maria Vasquez
Irma Villarreal

Ysidra Villarreal
Rosa Villarreal
Nancy Walsworth
Linda Weeks



Don West
Wilma West
Billie Williams
Dean Williams



Freddy Wrinkle
Ronnie Wingenter
Joyce Woodall
Ima Jean Wyatt



Ann York
Bill Young
Hortencia Zambrano
Zenaido Zambrano



Ester Zavala
Wayne Bernsen





S
N
A
P
S
H
O
T
S

Favorites

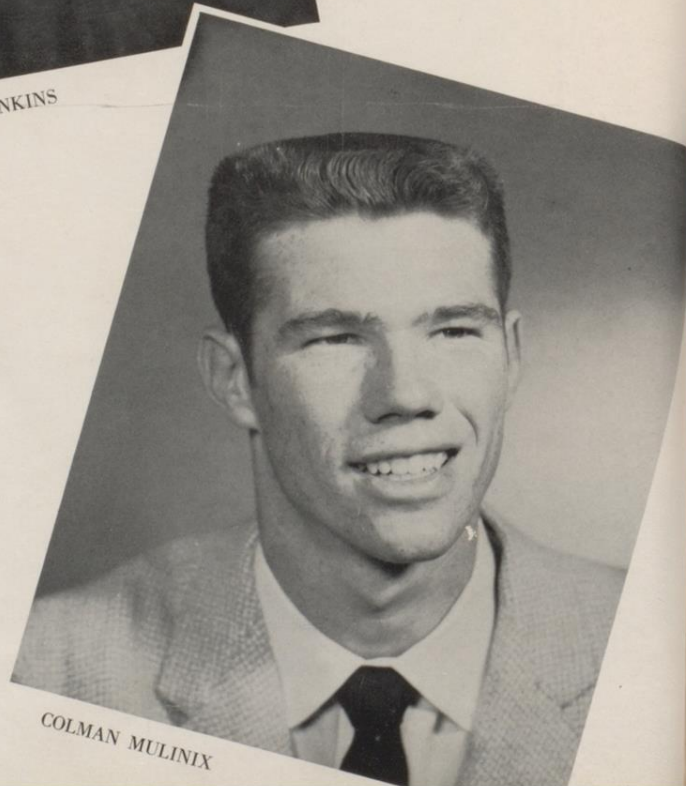


S
E
N
I
O
R



NANCY JENKINS

F
A
V
O
R
I
T
E
S

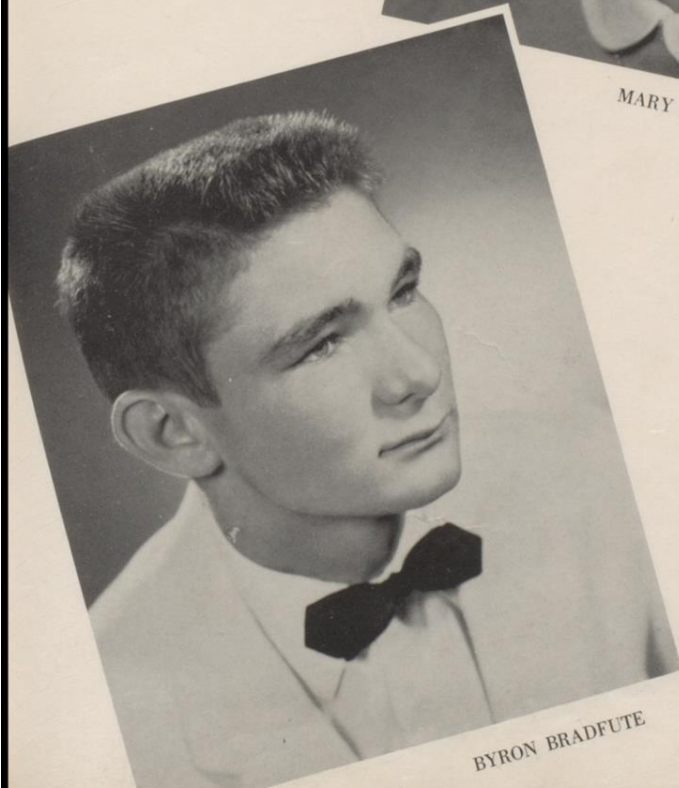


COLMAN MULNIX

J
U
N
I
O
R



MARY BETH McKINNY



BYRON BRADFUTE

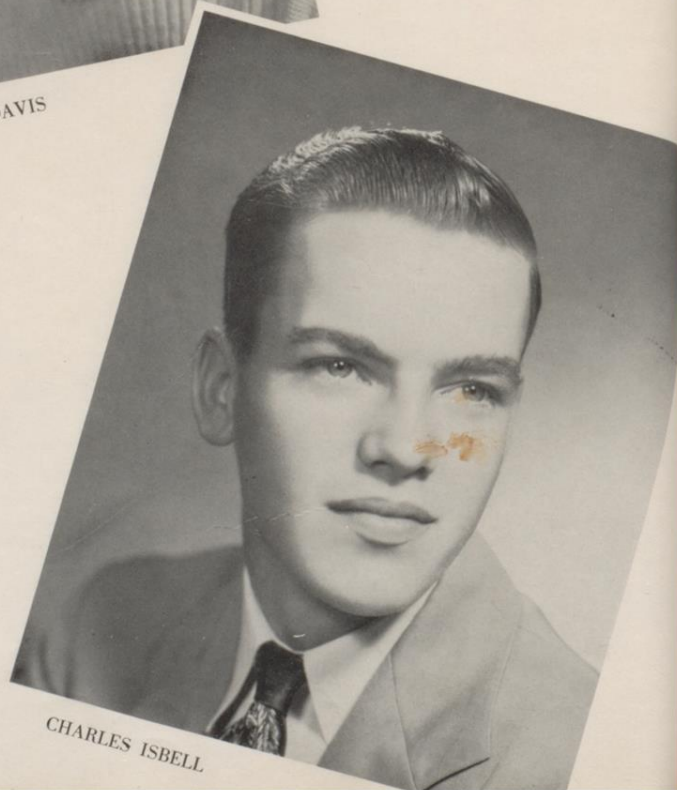
F
A
V
O
R
I
T
E
S

S
O
P
H
O
M
O
R
E



MARION DAVIS

F
A
V
O
R
I
T
E
S

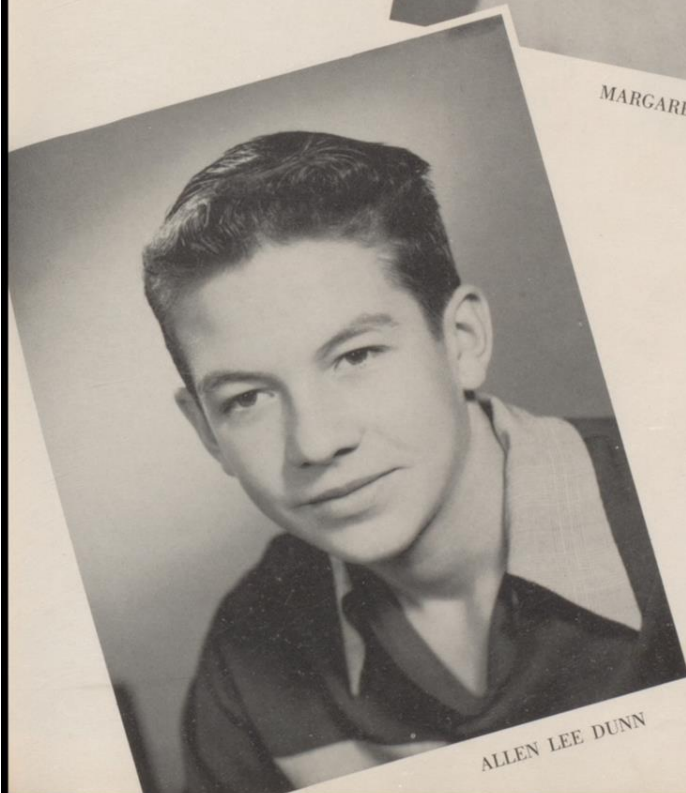


CHARLES ISBELL

F
R
E
S
H
M
A
N



MARGARET ANN HATCHER



ALLEN LEE DUNN

F
A
V
O
R
I
T
E
S



CAROL MALONE



MARY GAINES



SHIRLEY HAMILTON

M
O
S
T

B
E
A
U
T
I
F
U
L

M
O
S
T

O
U
T
S
T
A
N
D
I
N
G

M
O
S
T

A
T
H
L
E
T
I
C

M
O
S
T

H
A
N
D
S
O
M
E



JOHNNY WANDLESS



ELDRIDGE CUSTER



BUDDY McKEE

WHO'S



ELDRIDGE CUSTER



BILLY BAKER

WHO



MARY GAINES



ANN GILBRETH



EVELYN HENRY



ANNA JOYCE LOTT



CAROL MALONE

WHO'S



CHARM MILLER

WHO



COLMAN MULNIX



EDDIE STEPHENSON

Sports





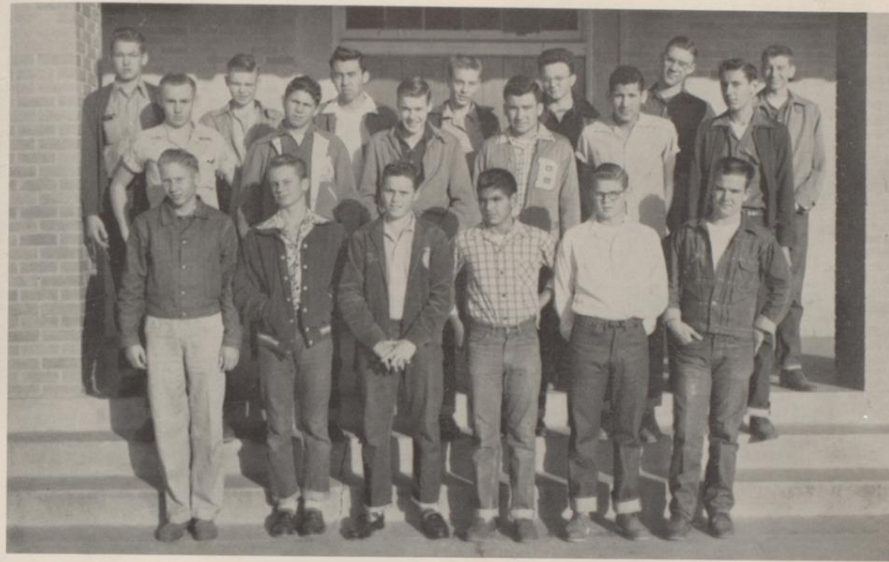
Top row, left to right: Walter Smith, Joe Trial, Virgil Blevins, Buddy McKee, Jack Bond, Joe Hamm, Mike Pringle, Herbert Whalen. Middle row: Coach Curbo, Byron Bradfute, Dave Lain, Charlie McMahon, Billy Baker, Jimmie Peterson, Wayne Wyatt, Freddy Patty, Coach Jackson. Front row: Allen Powell, Jerry Ford, Dewayne Pollard, Leo Thompson, Rudy Soliz, Pete Reyes, Liborio Lozano, Bernie Sandoval, Abel Vargas.

TROJANS



COACHES
Green, Allison, Jackson, Curbo

"B" TEAM

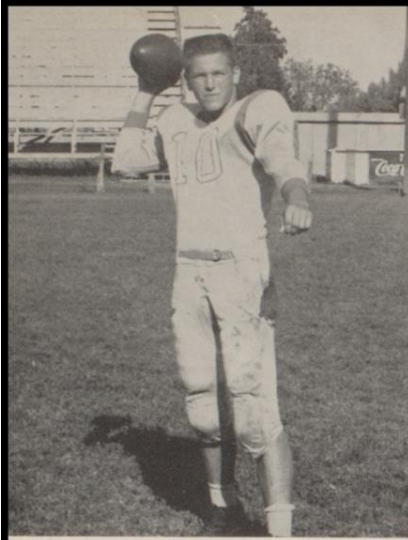


Back row: Billy Reid, Freddy Wrinkle, Raul Medina, Otis Gold, Eddie Jones, Stanley Geisler, Paul Shamburger. Second row: Virgil Youngblood, Johnny Bond, Charles Isbell, Lorenzo Cantu, Hilario Garza, Bill Young. Front row: Eugene Sweet, Ronnie Pringle, George Rayburn, Herbie Fitts, and Billy Stevens.

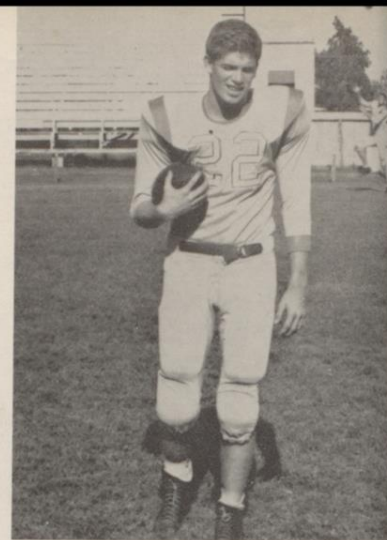
FOOTBALL SWEETHEART



LAWANA ROUTH



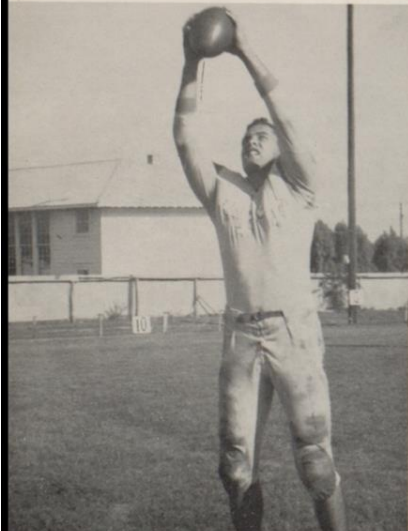
CHARLES McMAHON—Back



BUDDY McKEE—Back

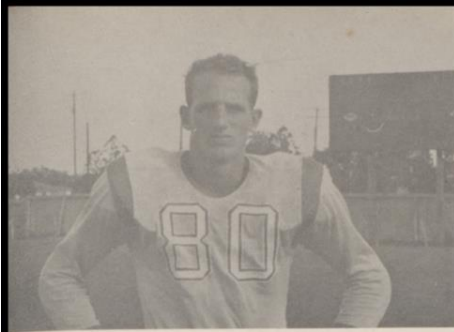
TROJANS OF 1954-1955

BILLY BAKER—Back



HERBERT WHALEN—Guard





JOE HAMM—End



DEWAYNE POLLARD—Back



FRED PATTY—End



BERNIE SANDOVAL—Center

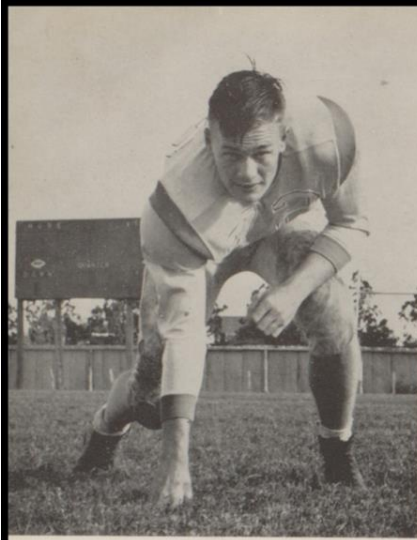
TROJANS

WAYNE WYATT—Guard



WALTER SMITH—Back





DAVE LAIN—Tackle



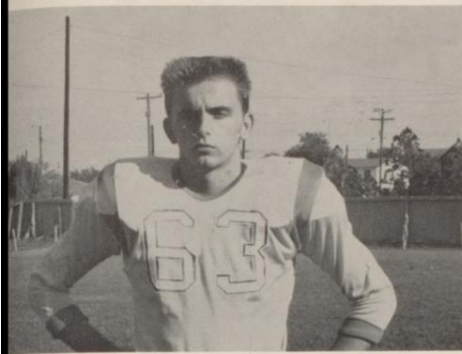
JACK BOND—Back



PETE PETERSON—Tackle



AGAPITO PRESA—Back



MIKE PRINGLE—Guard



PETE REYES—Back



JOE TRIAL—Tackle

VIRGIL BLEVINS—Back





RUDY SOLIZ—Back



JERRY FORD—End



ALLEN POWELL—Guard

LIBORIO LOZANO—Back



B A S K E T B A L L

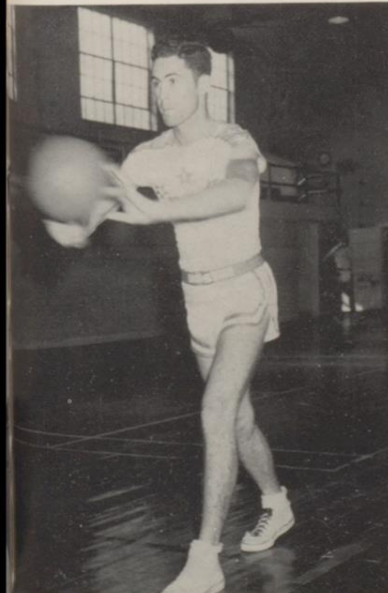


Back row, left to right: Byron [redacted], Billy Baker, Coleman Mulinix, Buddy McKee, Bobby Johnson, Jerry Ford, Joe Hamm, Coach Gail Allison. Front row: Johnnie Hirst, Virgil Blevins, Charlie McMahon, Leo Thompson.

S Q U A D

BILLY BAKER, 4-year letterman, broke the record of the most points scored by one man in a season in 1954 and is high scorer for 1955.

COLEMAN MULINIX, 2-year letterman, is second highest scorer for the 1955 season.



D I S T R I C T

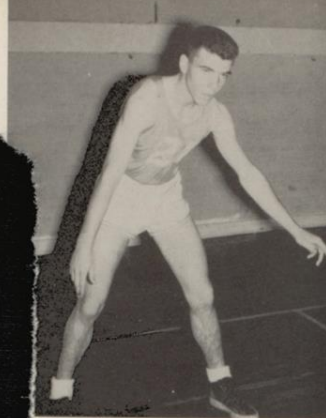
C H A M P S

26-AA

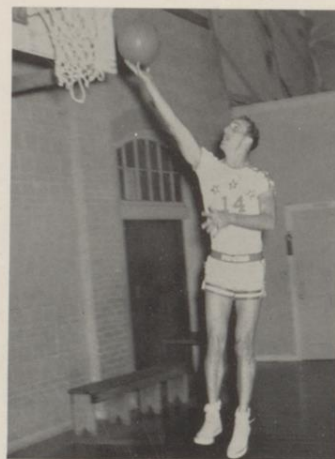




VIRGIL BLEVINS, 1-year letterman, is a hustling guard who sparked the team this year.



LEO THOMPSON, 2-year letterman is also a hustler.

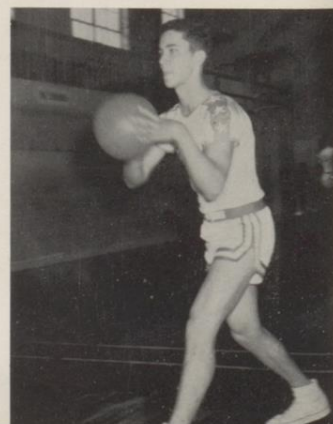


CHARLIE McMAHON

JOE HAMM

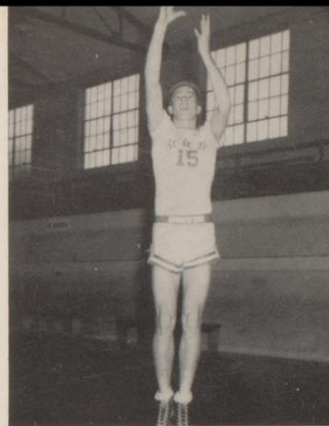


JOHNNIE HIRST





BOBBY "JAG" JOHNSON, 2-year letterman, is well-known for his beautiful long shots.



BUDDY McKEE, 2-year letterman, is always in there for the rebounds.

JERRY FORD, junior letterman, is good on rebounds and a high-jumper on tie balls.



BYRON BRADFUTE, also a junior, is a high-jumper on tie balls.

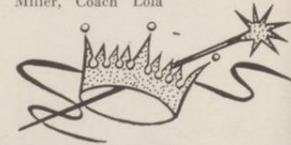


THE TROJANETTES



Bottom row, left to right: Joyce McClelen, Lou Anne Parsons, Mary Beth McKinney, Marion Davis, Lawana Routh, Anna Joyce Lott, Pat Morrow. Middle row: Carol Malone, Ann Allen, Carolyn Wyckoff, Judy Burgoon, Lela Mae McClelen, Nancy Walsworth, Alice Culpepper. Top row: Manager Karen McKinney, Margaret Ann Hatcher, Charm Miller, Coach Lola Bonner, Evelyn Henry, Shirley Hamilton, Manager Shirley Malone.

"A" TEAM



Bottom row, left to right: Marion Davis, Anna Joyce Lott, Coach Lola Bonner, Mary Beth McKinney, Lawana Routh. Top row: Manager Karen McKinney, Evelyn Henry, Shirley Hamilton, Charm Miller, Pat Morrow, Manager Shirley Malone.

PAT MORROW



SHIRLEY HAMILTON



EVELYN HENRY



CHARM MILLER



ANNA JOYCE LOTT



MARY BETH McKINNEY



LAWANA ROUTH



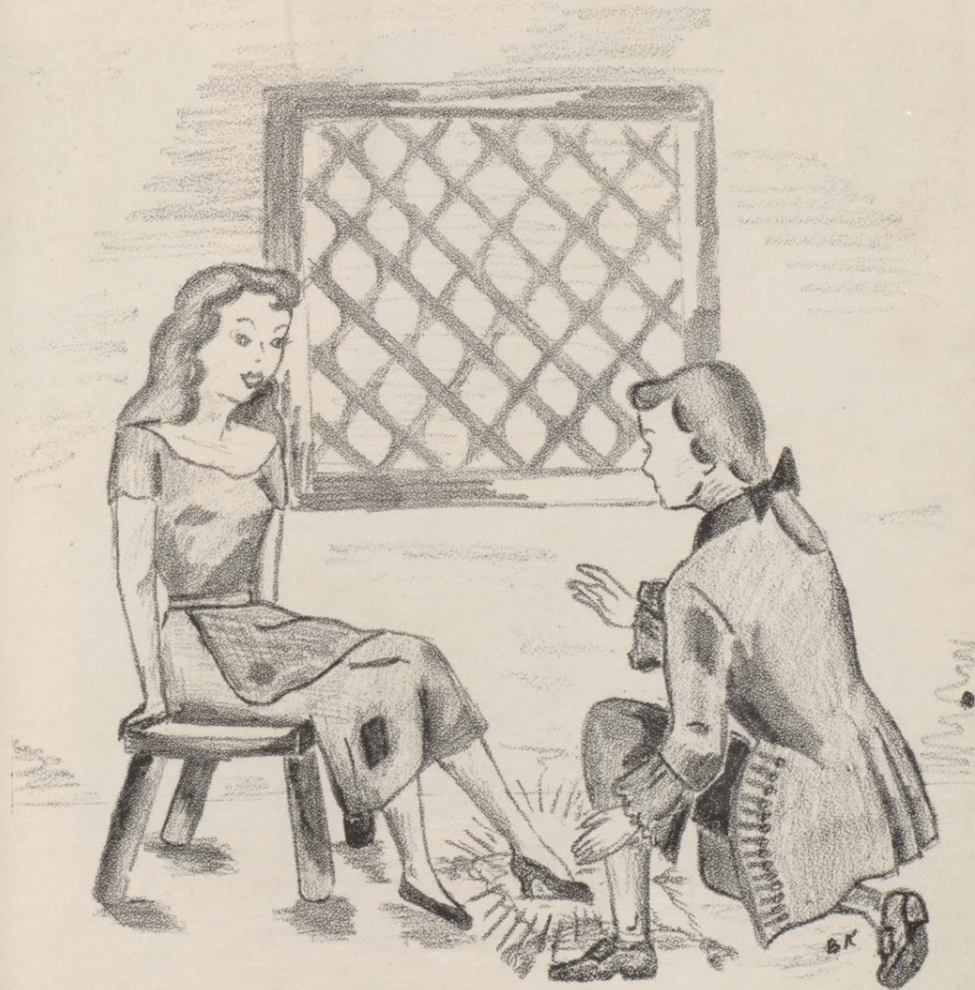
MARION DAVIS

"B" TEAM



Bottom row, left to right: Nancy Walsworth, Judy Burgoon, Carolyn Wyckoff, Lela Mae McClen. Top row: Lou Anne Parsons, Alice Culpepper, Carol Malone, Ann Allen, Margaret Ann Hatcher, Joyce McClen.

Clubs





BAND MEMBERS

Baker, Joanne	Martinez, Christobal
Barnes, Joy	Martinez, Lina
Bertram, Roberta	Mixon, Patsy
Boenig, Walter	Moehring, Glenn
Boethel, Darlene	Monday, Charles
Bond, Johnny	Morrow, Patricia
Brown, Charles	Morse, Jeannie
Brown, Joan	Moya, Bobby
Bryer, Norma	Munson, Karen
Butts, Dennis	Nutt, Mary Margaret
Butts, Roberta	Parsons, Bill
Butts, Virginia	Parsons, Lou Anne
Byars, Patty	Partlow, Patty
Caffall, Brodus	Payne, Barbara
Council, Camilla	Plachy, Barbara
Culpepper, Alice	Pollard, Dewayne
Davis, Bill	Ramos, Reynaldo
Espinosa, Fred	Rider, Beverly
Faircloth, Richard	Rider, Glenna
Finke, Philip	Roberts, Sue
Fridge, Tommie Gay	Rothslinger, Herbie
Fuson, Darlene	Routh, Sue
Geisler, Stanley	Rowland, John
Gill, Betty Jean	Seidel, Wilbur
Hamilton, Shirley	Shanks, Richard
Harris, Sondra	Shooks, Vera Lee
Hendrichson, James	Slay, Marilyn
Herod, Gene	Smith, Nancy
Hill, Robert Lee	Smith, Patty
Hirst, Johnny	Spikes, Georgeanne
Isaacks, Patty	Stewart, James Ray
Isreal, Beda	Stewart, Robert
Isreal, Etta	Taylor, Gayle
Jackson, Frank	Tolliver, Eleanor
Jenkins, Nancy	Tolliver, Margaret
Kennedy, Virginia	Warren, Ruth
Klett, Billye	Weeks, Linda
Laughter, Arnette	Williams, Dean
Lawrence, David	Williams, James
Loissin, Gaynelle	Woodall, Shirley
Lott, Anna Joyce	Woodall, Joyce
McMillion, Judy	Wyatt, Ima Jean
Mabray, Dick	Wyckoff, Carolyn
Malone, Ann	Young, Bill
Malone, Carol	Youngblood, Mary
Malone, Shirley	

TROJAN BAND



CAROL MALONE



RUTH WARREN



VIRGINIA BUTTS



ANNA JOYCE LOTT



PAT MORROW



NANCY JENKINS



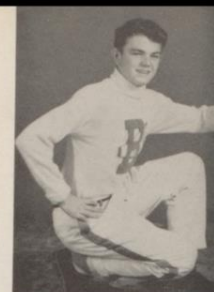
Bottom row, left to right: Gwen Pugh, Barbara Jostes, Norma Jane Range, Martha Reyes, Beverly Cash, Dorothy Koenig, Joyce McClelen, Violet Cox, Mary Ann McGilvary, Margaret Huser, Betty Wright, Billye Rose Bell, Kathryn Hutchins, Patricia Chesshir, Mary Kay Thornton, Myrtice Huebner. Middle row: Kay Allen, Olga Fernandez, Irene Govella, Lela McClelen, Alice Garcia, Karen McKinney, Virginia Butts, Carolyn Ward, Anna Zerda, Pauline DeLeon, Jamie Brown, Mary Williamson, Marilyn Smith, Ann Allen, Adelmira Leal. Back row: Johnny Rossi, Dick Mabray, Santana Leal, Weldon Terry, Robert Morse, Fermin Meza, Byron Bradfute, Bill Young, Robert Stewart, Raul Medina, Uvaldo Mayorga, David Vargas, Douglas Hutchins.



EVELYN HENRY



ANN GILBRETH, *Head Cheerleader*



JERRY MAY

CHEERLEADERS

MARY BETH McKINNEY



'5
4

'5
5

LAWANA ROUTH



P
E
P



C
L
U
B

First row up: Ruth Luna, Violet Cox, Myradel Kirk, Claudia Fudge, Karen McKinney, Loretta Downes, Anna Plachy, Gwen Pugh, Wilma Robinson. Second row up: Becky Hopkins, Joy Reddell, Jeanette Durant, Shirley Brown, Ronnie Rowland, Frances Searcy, June Parchman, Jo Ann Bynum. Third row up: Bobbie Deason, Ann York, Linda Cox, Carolyn Rosebrock, Joan Imes, Billie Williams, Mary Lou Sanchez. Fourth row up: Maria Ochoa, Joyce Neuhaus, Mary Ann McGilvray, Marion Davis, Ann Hebert, Ester Zavala, Jean Luthringer, Kay Allen. Fifth row up: Jenny Davila, Andrea Rodriguez, Maria Velasquez, Adelfa Ramirez, Irma Villarreal, Mary Jo Butler, Patsy Allen. Sixth row up: Theodora Ochoa, Anna Lou Zerda, Irene Govella, Billye Rose Bell, Jane Orchard, Olga Rameriz, Ermila Rojas. Seventh row up: Ann Allen, Martha Reyes, Adelmira Leal, Alice Cortez, Judy Burgoon, Ysidra Villarreal, Hartincia Contreras, Mary Lou Garcia. Eighth row up: Lela Mae McClelen, Ramona Trevino, President; Sandra Gorham, Pauline DeLeon, Rosie Villarreal, Olga Contreras, Sylvia Moreno, Eudelia Barrera, Olga Fernandez, Rebecca Rodriguez, Vice President.



NANCY JENKINS
Editor



MISS JEAN DUGAT
Sponsor



GLORIA GODKIN
Associate Editor

T R O J A N



S T A F F

Bottom row, left to right: Ramona Trevino, Grace Mussett, Ann Gilbreth, Carol Malone, Gloria Godkin, Nancy Jenkins, Autry Gordon, Walter Smith. Middle row: Jack Bond, Aleene Bast, Mary Gaines, Carolyn Ward, Evelyn Henry, Jerry May, Tommie Palmer. Top row: Jimmie Peterson, Billye Klett, Charm Miller, Lutie Shropshire, James Ray Stewart, Bobby Jemison, Coleman Mulnix, Bobby Johnson and Lynn Archer.

TROJAN STAFF

	<i>Editor-in-Chief</i> _____	NANCY JENKINS		
	<i>Associate Editor</i> _____	GLORIA GODKIN		
<i>Managing Editor</i> _____	ANN GILBRETH	<i>Make-up</i> _____	MARY GAINES	
<i>Business Manager</i> _____	CAROL MALONE		LYNN ARCHER	
<i>Publicity Manager</i> _____	CHARM MILLER		AUTRY GORDON	
<i>Circulation Manager</i> _____	ALEENE BAST	<i>Sports Editor</i> _____	EVELYN HENRY	
<i>Radio</i> _____	COLEMAN MULNIX		BOBBY JOHNSON	
	JAMES RAY STEWART		JIMMIE PETERSON	
<i>News Editor</i> _____	GRACE MUSSETT	<i>Feature Editor</i> _____	CAROLYN WARD	
	RAMONA TREVINO		LARRY KNOCKE	
<i>Art</i> _____	JACK BOND		JERRY MAY	
	BILLYE KLETT		LUTIE SHROPSHIRE	
	TOMMIE PALMER	<i>Production Managers</i> _____	WALTER SMITH	
	WILMA ROBINSON		BOBBY JEMISON	
<i>Advisor</i> _____	MISS JEAN DUGAT			

F U T U R E F A R M E R S



O F A M E R I C A

First row, left to right: A. R. Hatcher, Sponsor; Bobby Jemison, Dean Chamrad, Mary Fairly, Sweetheart; Ronald Lehman, Joe Schlein. Second row: Tom Luce, Ramond Hendley, Jerry Plachy, Gary Warnica, Wayne Foster, Troy Thurmond. Third row: Johnny Kircher, George Rayburn, Don Chamrad, Billy West, Don West, James Self. Back row: Ben Gonzales, James Sullivan, Rueben Reyes, John Kelly, Lupe Ramos. Not pictured: Wayne Bernsen, Lorenzo Cantu, Gale Daley, John Galloway, Baldemar Garcia, Wayne Hatcher, John Matocha, Paul Plachy, Walter Smith.



Chapter Sweetheart
MARY HELEN FAIRLY



Officers: Jerry Plachy, Ronald Lehman, Vice President; Bobby Jemison, President; Johnny Galloway, Dean Chamrad, Walter Smith.

F.
H.
A.



Back row, right to left: Miss McAnelly, Joan Imes, Peggy Wyatt, Violet Cox, Mary Ann McGilvary, Joyce Peters, Rose Huser, Barbara McGrew, Gracie Mussett, Day Griffen, Mary Lee Henry, Frances Searcy. Second row: Ramona Trevino, Shirley Woodall, Irma Villarreal, Minerva Perez, Mary Alice Chapa, Patricia Morrow, Carolyn Rosebrock, Claudia Fudge, Shirley Brown, Marlyn Smith, Andra Rodriguez, Maria Velasquez, Martha Reyes, Linda Cox, Joyce McClelen. Front row: Etta Isreal, Loretta Lopez, Esther Zavala, Mary Lou Sanchez, Oraia Navanjo, Antonia Rocha, Janett Durant, Myradel Kirk, Beda Isreal, Wilma West, Day Allen, Mary Jo Buttler, Mary Kay Thorton, Patsy Allen, Sue Routh, Barbara Wright.

OFFICERS AND SPONSOR



Carolyn Rosebrock, Claudia Fudge, Mary Ann McGilvary, Mrs. Bergmann, Lela Mae McClelen, Joanne Baker, Marlyn Smith, Joyce McClelen, and Patricia Morrow.



Sweetheart
WAYNE WYATT



Barbara McGill
Violet Cox

OFFICE



Myradel Kirk
Claudia Fudge



Alice Ballard
Kay Kinkler

Aleene Bast
Patricia Brown



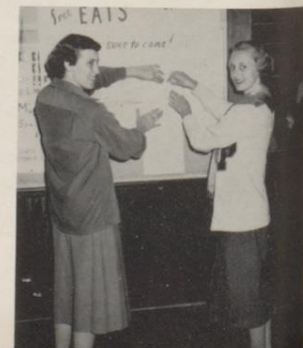
Barbara Jostes
Norma Jane Barber



Marion Davis
Beda Isreal
Shirley Woodall



Alice Culpepper
Beverly Cash



STAFF

D.
E.
C
L
U
B



D.
E.
C
L
U
B

Baldilliz, Beatrice; Flores, Armado; Garcia, Armado; Garcia, Mike; Garza, Joe; Garza, Johnny; Gordon, Autrey; Hopkins, Becky; Israel, Bartell; Moreno, Joe, President; Robinson, Wilma; Ross, John; Searcy, Charles; Trevino, Aurelio; Vargas, Abel; Younts, Louis; Archer, Lee; Carlisle, Peggy, Secretary-Treasurer; Crockett, Donald; DeLeon, Elvira, Sweetheart; Garza, Jessie; Hobbs, Travis; Hernandez, Heremenegildo; Lopez, Lucila; Martinez, Ernesto; Meider, Bill; Moody, Jim, Vice President; Ochoa, Maria; Wandless, John; Peters, Lynn; Rollins, Mary, Reporter; Searcy, George; Zimmer, Kenneth.



Joe Moreno, President; Jim Moody, Vice President; Peggy Carlisle, Secretary-Treasurer; Mary Rollins, Reporter.



ELVIRA DELEON, *Sweetheart*



GERALD STARR
D.E. Coordinator

FUTURE TEACHERS



Bottom row, left to right: Claudia Fudge, Secretary; Joy Reddell, Librarian; Ann Gilbreth, President; Mary Beth McKinney, Treasurer; and Virginia Butts, Reporter. Middle row: Miss Wilynn Rabb, Sponsor; Gayle Taylor, Joyce Neuhaus, Andrea Rodriguez, Anna Lou Zerda, Cheryl O'Shields, Darlyne Franke, Karen McKinney, Norma Jane Range, Norma Jane Barber, Barbara Jostes, Darlene Fuson, and Ann Allen. Back row: Mr. George Elam, Sponsor; Mary Margaret Nutt, Carolyn Rosebrock, Violet Cox, Ruth Warren, Linda Cox, Jane Orchard, Patricia Brown, Beverly Rider, Martha Reyes, Shirley Brown, Aleene Bast, Carolyn Ward, Kay Kinkler, Mary Helen Fairly, Alice Ballard and Richard Shanks.

OF AMERICA

KEY



Bottom row, left to right: Coleman Mulinix, President; Eddie Stephenson, Vice President; James Ray Stewart, Secretary; Byron Bradfute, Treasurer. Middle row: Virgil Youngblood, Ralph Jackson, Joe Trial, Tom Luce, Tommy Searcy, Bill Davis. Back row: Herbert Whalen, Eldridge Custer, Charles Dorsey, James West, Morris White, Tommie Palmer, Oscar Travland.

CLUB

STUDENT COUNCIL



Members: Virginia Butts, Donald Chamrad, Judy Burgoon, Linda Bech, Margaret Hatcher, Jean Luthringer, Patty Partlow, Terry Noble, Mary Belle Reagan, Margaret Tolliver, Bill Young, Linda Weeks, Bill Davis, Camilla Council, John Monroe, Ann Hebert, Sue Roberts, Morris White, Darlene Fuson, Byron Bradfute, Mary Beth McKinney, Patricia Morrow, Lawana Routh, Tonny Searcy, Jack Bond, Ann Gilbreth, Anna Joyce Lott, Coleman Mulinix, Oscar Travland, Carol Malone, Lou Anne Parsons, Eddie Stephenson, Joy Reddell, Virgil Youngblood.

MR. BENNY PIERSON—*Sponsor*



OFFICERS—Eddie Stephenson, President; Carol Malone, Vice President; Anna Joyce Lott, Corresponding Secretary; Byron Bradfute, Parliamentarian; Oscar Travland, Reporter.

NATIONAL HONOR SOCIETY



Back row, left to right: Eleanor Tolliver, Joyce McClelen, Eldridge Custer, Joy Reddell, Tommy Searcy, Ralph Jackson, John Monroe. Second row: Mr. George Elam, Sponsor; Laverne Laughter, Margaret Maxwell, Nancy Smith, Ann Hebert, Lou Anne Parsons, Bill Davis, Dean Chamrad, Barbara Jostes, Dave Lain (not shown). Front row: OFFICERS—Lucille Laughter, President; Mary Margaret Nutt, Treasurer; Mary Gaines, Secretary; Carol Malone, Rep.; Pat Morrow, Vice President.

LIBRARY CLUB



Back row, left to right: Oralia Naranjo, Hortencia Contreras, Margaret Maxwell, Treasurer. Middle row: Mary Margaret Nutt, Secretary; Jeanette Durant, Myradel Kirk, Dorothy Koenig, Maria Velasquez, Joan Imes, Eleanor Tolliver, Jeanne Morse. Front row: Violet Cox, Vice President; Joy Reddell, President; June Lain, Norma Range. Not shown: Ramona Trevino, Rep.

STAMP CLUB



Front row, left to right: Mrs. Ina West, Sponsor; Alice Ballard, President; Darlyne Franke, Secretary; Ann Hebert, Johnny Galloway, Richard Shanks, Anthony Wingenter. Back row: Robbie Morse, Jimmy Nelson, John Monroe.

S A F E T Y



P A T R O L

Back row, left to right: Bill Young, Eddie Jones. Middle row: Ben Gonzales, Dick Mabray, Mickey Dougherty. Front row: Bobby Moya, James Henrichson, Gary Mills, Boyce Vann.

JOHN KELLY, *Captain*

MR. CECIL ALLEN, *Sponsor*



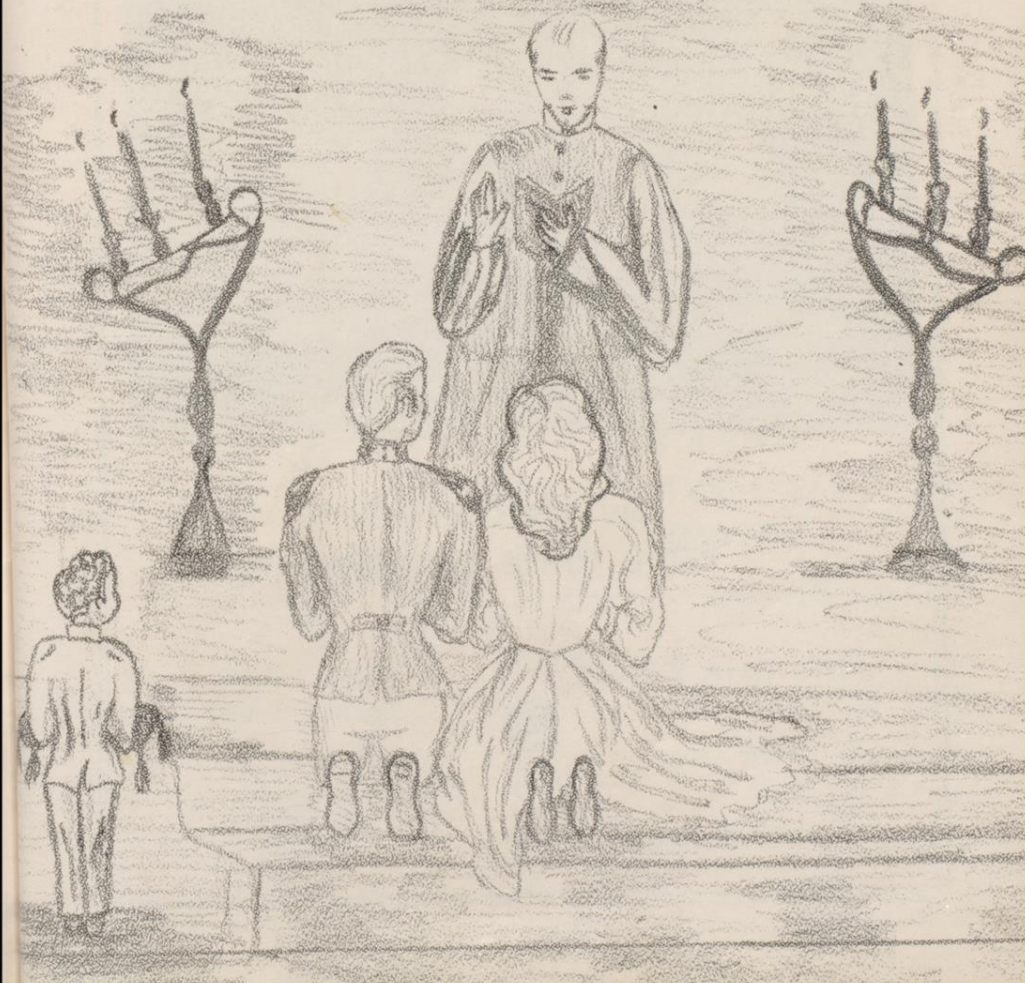
ANNUAL STAFF

Editor Mary Gaines
Associate Editor Charm Miller
Business Manager Ann Gilbreth
Photographer Oscar Travland
Art Editor Billye Klett
Staff Assistants—Marion Davis, Mary Beth Mc-
 Kinney, Johnny Galloway, Mary Bell Reagan,
 Ruth Jones, Cheryl O'Shields, Pat Brown, Kay
 Kinkler, Lockie Lou Harper, Bunky Beasley.

MRS. FRIEDA VAN DER VEER—*Sponsor*



Als





Sid Hatcher's
RED & WHITE GROCERY



MERGELE JEWELERS
"Gifts of Lasting Distinction"



Diamonds — Watches — Silver
307 N. Washington
BEEVILLE, TEXAS

Congratulations to
the Senior Class

●
**SMITTY'S
GROCERY**

●
500 East Bowie St.
BEEVILLE, TEXAS

Phone 844

Compliments
of the
**HOUSTON
NATURAL GAS
COMPANY**

HAUSE AND HALL

Men's Wear

BEEVILLE, TEXAS



"Finest in Motion Picture Entertainment"

at the

**RIALTO
THEATRE**



Your Health
IS OUR
BUSINESS

Ballard Drug Store

Joe Richards,
OWNER

OUR CUSTOMER IS ALWAYS RIGHT

Phone 45 & 72

Beeville, Texas



HUNT AUTO COMPANY

Phone 700

BEEVILLE

Serving Bee County Over 34 Years

Knight Insurance Agency

Insurance and Bonds

State Bank and Trust Building

Phone 567

BEEVILLE, TEXAS

GOOD MATTRESSES
MEAN
GOOD SLEEP

PHONE 408

"Complete
Home
Outfitters"

FINE COMFORTABLE
FURNITURE

HOME FURNITURE MATTRESS CO.

Beeville, Texas



**STATE BANK
& TRUST
COMPANY**



Federal Deposit Insurance Corp.
Federal Reserve System

BEEVILLE, TEXAS

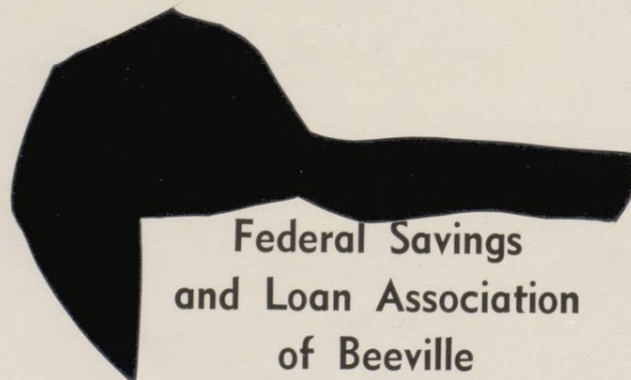




NEWSOM'S



COMPLIMENTS OF



Federal Savings
and Loan Association
of Beeville



FIRST NATIONAL BANK

Beeville, Texas

MEMBER F.D.I.C.



SCHULZ PHARMACY

BEEVILLE

TEXAS

Phone 56



HALL'S STORE

Established in 1899

by Sid Hall

C
E
N
T
R
A
L



D
R
U
G
S

Beeville's Leading Dept. Store



WILLIAM'S, INC.

Congratulations Seniors
from
THE FIRST BAPTIST CHURCH
B. C. Brown, Pastor



A Cordial Welcome Awaits You in All Our Services

JOE'S CHEVROLET CO.





Compliments
BRONCO AND TEXAS THEATERS
A. M. GAINES, Owner



PHONE 577

NU-WAY CLEANERS & LAUNDRY

"NU-WAY IS THE RIGHT WAY"

108 E. Corpus Christi

Beeville, Texas

Compliments of

FORTUNA BROOM COMPANY

Makers of

King and Queen Brooms

Compliments

RUTH DAVIS

JUNIOR FASHIONS



KIBL



◆◆◆ GEISLER'S FOOD STORE ◆◆◆

S
H
A
M
R
O
C
K



C

A

F

E

"Where Oil and Cattlemen Meet and the Trojans Eat"

PAUL RUSSELL'S
Beeville
FEED & SEED COMPANY



FARM AND RANCH

HEADQUARTERS

Buyers of Farm Produce

Compliments



CONOCO SERVICE STATION

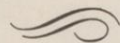
Raymond T. Powell
Owner

PHONE 727

315 N. ST. MARY'S

"Your Mileage Merchant"

H. E. B.



Congratulations
Trojans
1954

ANTHONY'S



"Serves You Better
and Saves You
More"

BEN FRANKLIN
STORE

Beeville's Newest 5 and 10
208 N. WASHINGTON
Beeville Phone 1160



Allen, Jerry, Byron
Pat, Lawana, Mary Beth

BAGLEY & MARTIN

Real Estate
and
Insurance



Morris, Charlie, Tommie
Marion, Ann, Camilla



LACK'S

Ph. 404

V. E. KESSLER

**WHEN YOU
SEE THIS**



**It's Too Late For Fire Insurance –
Better See Me Now**

V. E. KESSLER

Insurance Since 1910

BEASLEY BLDG. — PH. 653



NORRIS W. RIDER INSURANCE SERVICE

Drive - In Pay Window

607 N. WASHINGTON

Life — Polio — Hospital — Fire — Auto



GUARANTEE PLUMBING AND SALES COMPANY

Beeville

Texas



CITY DRUG STORE

Prescription Specialists

PHONE 107 — 66

BEEVILLE, TEXAS

Visit Our Fountain



PERRY BROTHERS INC.

5 - 10 - 25 STORE

"All Over Texas"

PERRY BROTHERS, INC.



5 - 10 - 25 Store
'ALL OVER TEXAS'
BEEVILLE, TEXAS

THE PARISIAN



DISTINCTIVE APPAREL FOR WOMEN

308 N. Washington

Beeville, Texas

Phone 779

CHESTER'S
New & Used Cars



"Where Cars Are Bought and Sold"
CALL 113 OR GO BY 601 SOUTH WASHINGTON
"A Good Deal In Every Deal"

1912

First and Last

It has been our privilege to congratulate each class of Seniors from 1912, the first class of graduates to come out of your present building, down through the years to the Class of '55. In the years to come, may each and every one be richly benefited from the associations during your tenure in this building.

THE FIRST NATIONAL BANK

of Beeville
BEEVILLE, TEXAS

Established
1890

MEMBER F. D. I. C.

1955



"Flowers for every occasion."

ZIMMER FLORAL
AND NURSERY

San Antonio Highway

Phone 974

Compliments



COMMERCIAL

NATIONAL

BANK





CENTRAL POWER AND LIGHT

Beeville, Texas

B
E
E
V
I
L
L
E



B
O
O
T
S
H
O
P



MRS. LESLIE L. ORY
Dietician

CAFETERIA STAFF



CHEERLEADERS



